

---

# **Appendix B2**

## Nesting Bird Survey



**From:** [Jane Gray](#)  
**To:** [Heather Moine](#)  
**Subject:** FW: 1100 Rancho Conejo Biotech Campus Nesting Bird Survey Results  
**Date:** Wednesday, June 22, 2022 12:17:39 PM  
**Attachments:** [image001.png](#)

---

**Jane Gray** (she/her)

Regional Planner/Project Manager

**DUDEK**

621 Chapala Street, Santa Barbara, CA 93101

Direct: 805.308.8531 Cell: 805.335.7380

[www.dudek.com](http://www.dudek.com)

---

**From:** Jane Gray

**Sent:** Tuesday, June 7, 2022 11:50 AM

**To:** Scott Kolwitz <[skolwitz@toaks.org](mailto:skolwitz@toaks.org)>

**Subject:** 1100 Rancho Conejo Biotech Campus Nesting Bird Survey Results

Good Morning, Scott,

I hope you are well. Apologies in delay on this. My understanding was that you had received this already.

Please let us know if you have any questions.

Best,

**Jane Gray** (she/her)

Regional Planner/Project Manager

**DUDEK**

621 Chapala Street, Santa Barbara, CA 93101

Direct: 805.308.8531 Cell: 805.335.7380

[www.dudek.com](http://www.dudek.com)

Dudek conducted a nesting bird survey of the entire 18.9 acre Rancho Conejo Biotech Campus project site was conducted from 8:49AM to 12:42PM on Friday, May 27, 2022.

#### METHODS

Dudek biologist Rachel Swick surveyed the entire project site, searching for nests and behavior indicative of nesting, such as carrying food or nesting material, or feeding young. Conditions were favorable, with temperatures ranging from 61 to 68 degrees Fahrenheit, cloud cover ranging from 30 to 100 percent, and winds ranging from 0 to 2 miles per hour. The locations and status of all observed nests were recorded using the ESRI Field Maps app on an iPhone. The locations of all active bird nests were marked in the field by purple pin flags.

## RESULTS

Ten nests were identified during the survey, nine of which are inactive. In addition to the single active nest, another location where nesting may have been initiated was detected. A list of observed bird species is attached.

**ACTIVE NEST:** One active band-tailed pigeon nest was observed on the southeast edge of the project site in a pine tree (Figure 1 – Nesting Bird Survey Results). One individual was on the nest, and a second was bringing nesting material (i.e., pine needles) to the nest. It is unclear whether eggs were present.

**POSSIBLE NEST SITE:** A pair of dark-eyed juncos were observed carrying and placing nesting material in the grass north of the northernmost building (Figure 1 – Nesting Bird Survey Results). No nest structure was present. Although the species nests on the ground, the location where the birds were carrying the nesting material was not a typical location for this species to build a nest, and it is unclear if a nest will be built here. This location presented no constraints to work activities at the time of the observation, but if nest building proceeds prior to work activity, it may provide a constraint.

## RECOMMENDATIONS

A 50-foot construction buffer is recommended around the Band-tailed pigeon nest tree, unless:

1. a biologist is present to monitor the nest, with authority to stop work if necessary to prevent disturbance to the nesting event,
2. the biologist determines based on monitoring observations that a smaller buffer is sufficient, without a monitor present,
3. the nest fails,
4. or the young fledge.

Purple flags have been placed at the 50-foot buffer edge to denote the no work buffer. If the biologist determines a no work buffer is no longer necessary, the flags will be moved. If the biologist determines a smaller buffer is sufficient, the biologist will move the flags to reflect that reduced distance.

At the location of the potential dark-eyed junco nest, we recommend a biologist inspect the area in the morning tree removal is scheduled to commence. If a nest is found, a no-work buffer may be established, at the discretion of the biologist. If no nest is found, no restrictions will occur to work in this area. Purple flags have been placed around the area nesting behavior was observed.

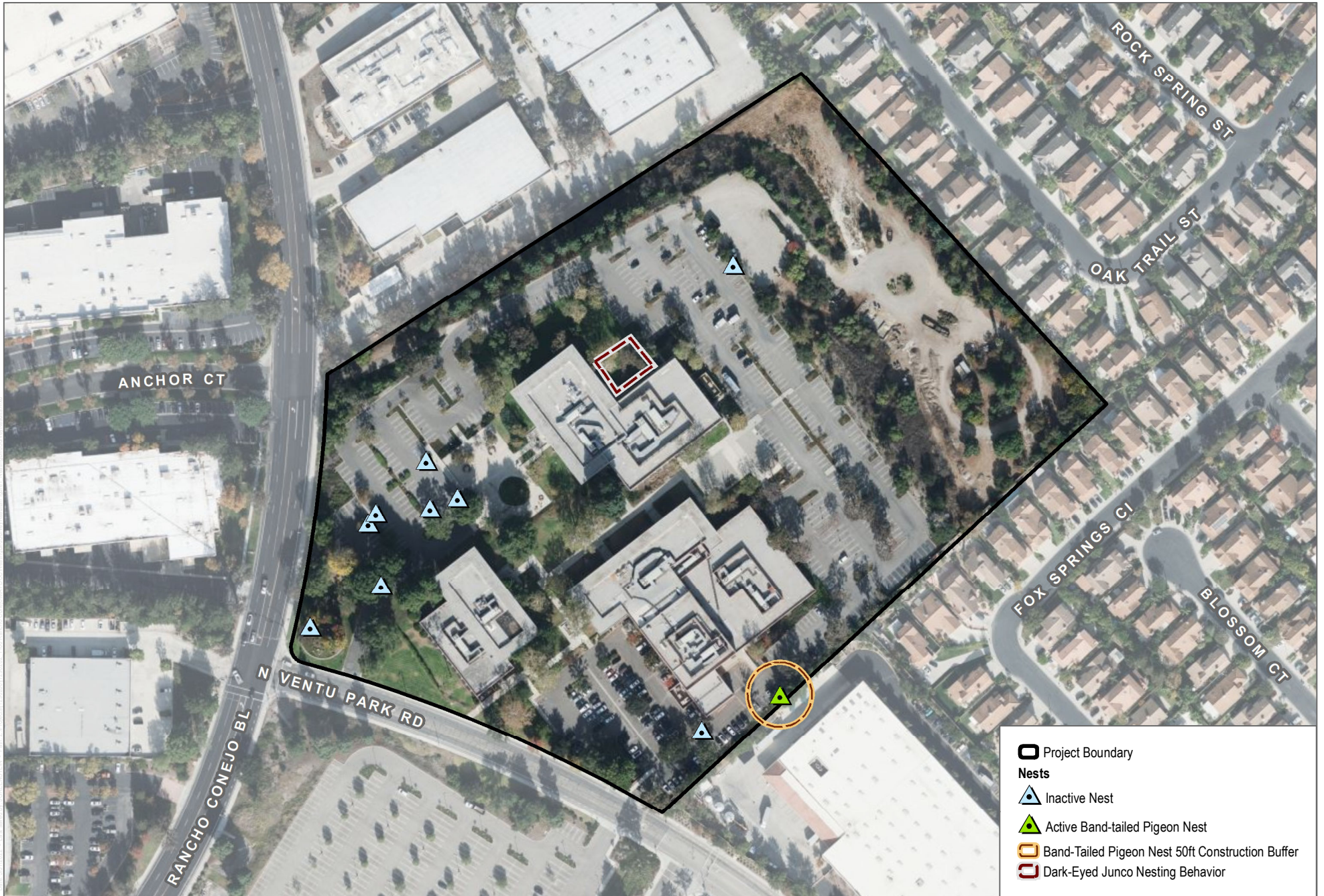
Work may proceed in any areas not affected by buffers related to these two locations. Dudek will provide a monitor on the morning of the scheduled tree removal, to inspect the junco nest location and update the status of the band-tailed pigeon nest. If nest buffers prevent work from being conducted on any part of the site, Dudek will visit the site subsequently to determine the status of any remaining active nest. Dudek will clear the area for work activities, once the nests are no longer active or work otherwise no longer presents a potential disturbance to the nest or young.

Please contact me at (949) 312-0143 if you have any questions.

Rachel Swick  
Dudek







SOURCE: Bing Maps

**FIGURE 1**  
**Nesting Bird Survey Results**  
 1100 Rancho Conejo





## Birds

### AEGITHALIDAE – LONG-TAILED TITS AND BUSHTITS

*Psaltriparus minimus* - bushtit

### COLUMBIDAE – PIGEONS AND DOVES

*Patagioenas fasciata* – band-tailed pigeon

*Zenaida macroura* – mourning dove

### CORVIDAE – JAYS AND CROWS

*Aphelocoma californica* – California scrub-jay

*Corvus brachyrhynchos* – American crow

### PASSERIDAE – OLD WORLD SPARROWS

\* *Passer domesticus* – house sparrow

### PICIDAE – WOODPECKERS AND ALLIES

*Dryobates nuttallii* – Nuttall's woodpecker

### PASSERELLIDAE – NEW WORLD SPARROWS

*Junco hyemalis* – dark-eyed junco

*Melospiza melodia* – song sparrow

*Pipilo maculatus* – spotted towhee

### TROCHILIDAE – HUMMINGBIRDS

*Calypte anna* – Anna's hummingbird

*Selasphorus sasin* – Allen's hummingbird

\* signifies introduced (non-native) species

