



Appendix J

Utility Will Serve Letters

December 1, 2020



Lake Creek Industrial, LLC
1302 Brittany Cross Road
Santa Ana, CA 92705

Subject: SAN 53 – Will Serve Water and Sewer – APN 300-210-006 thru 008, APN 300-210-026 thru 028

Eastern Municipal Water District (EMWD) is willing to provide water and sewer to the subject project. The provisions of service are contingent upon the developer completing the necessary arrangements in accordance with EMWD rules and regulations. EMWD expects the developer to provide proper notification when a water demand assessment is required pursuant to Senate Bill 221 and/or 610. EMWD expects the developer to coordinate with the approving agency for the proper notification. Further arrangements for service from EMWD may also include plan check, facility construction, inspection, jurisdictional annexation, and payment of financial participation charges. The developer is advised to contact EMWD's Development Services Department early in the entitlement process to determine the necessary arrangements for service, and to receive direction on the preparation of facility Design Conditions, which is required prior to final engineering.

EMWD's ability to serve is subject to limiting conditions, such as regulatory requirements, legal issues, or conditions beyond EMWD's control.

Expiration – one year from date of issue

Thank you for your cooperation in serving our mutual customers. If you have any questions, please call me at (951) 928-3777, extension 4420.

Sincerely,

Sambo Lay, M.S., P.E.
Associate Civil Engineer II
Development Services
Eastern Municipal Water District

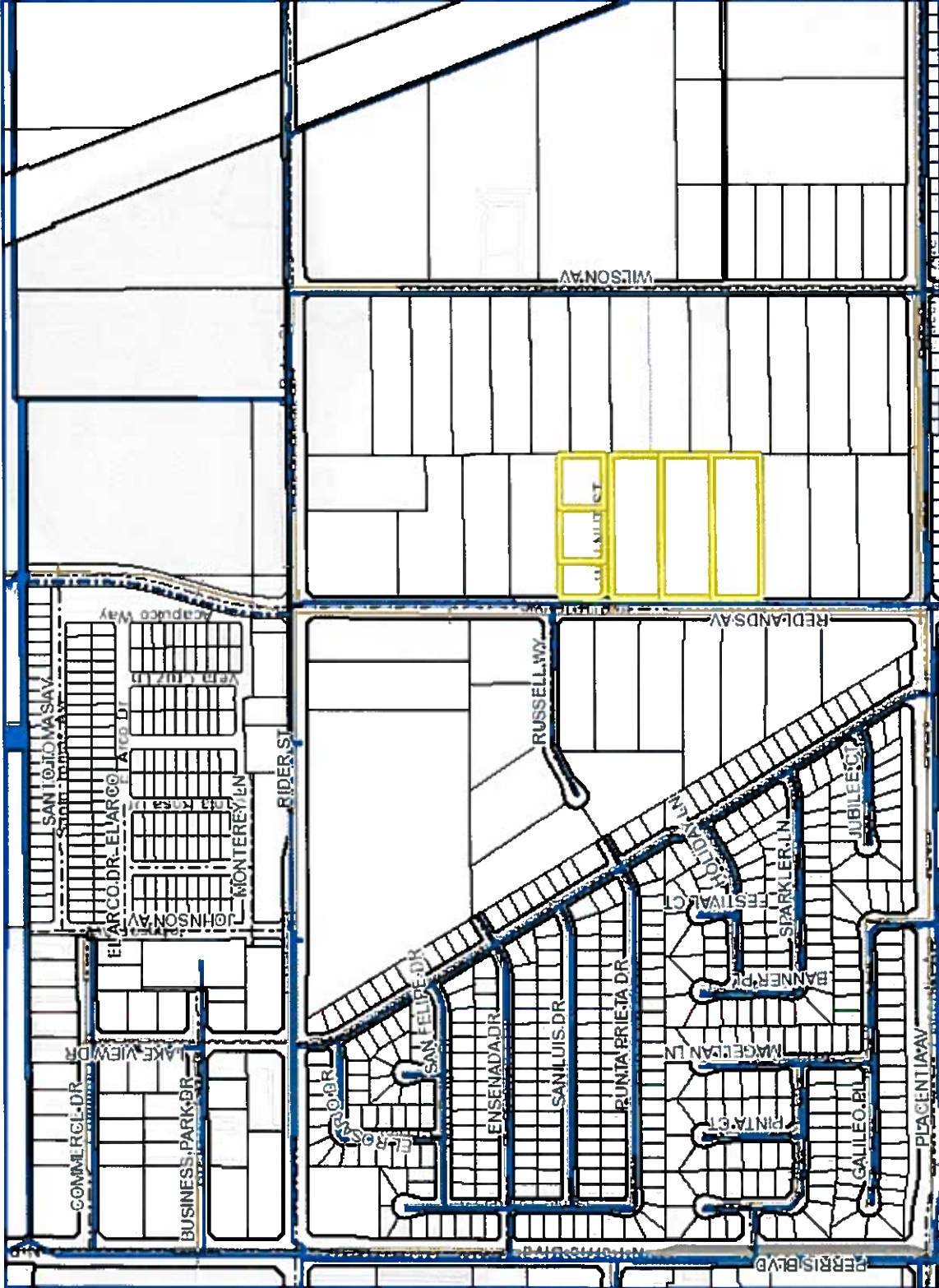
SL:bd

Board of Directors
David J. Stawson, *President* Ronald W. Sullivan, *Vice President* Joseph J. Kuebler, CPA, *Treasurer* Philip E. Paule Randy A. Record

2270 Trumble Road • P.O. Box 8300 • Perris, CA 92572-8300
T 951.928.3777 • F 951.928.6177 www.emwd.org



EMWD HydroMapper



Legend

Wtr Main	As Built	CIP
Wtr Main Abandoned		
Swr Interagency Tie		
Swr Main	As Built, Collection	As Built, Distribution
	As Built, Effluent Force	As Built, Influent Force
	As Built, Transmission	CIP, Collection
	CIP, Effluent Force	CIP, Influent Force
	CIP, Transmission	
Swr Main Abandoned		
Swr Main Murrieta		
Streets		
Wtr Pump Station		
Wtr Pump Station Polygon		
Wtr Tank		
Wtr Well		
Wtr Treatment Plant		
Wtr Treatment Plant Polygc		
MWD Connections		

Notes

GIS data shown is for informational purposes only, is subject to change without notice and may not be suitable for legal, engineering, construction, or surveying purposes. Information should be reviewed against reliable sources to ascertain its usability. Eastern Municipal Water District assumes no liability for any incorrect results, any lost profits and direct, special, indirect or consequential damages to any party, arising out of or in connection with the use or the inability to use the data hereon or the services.

SCALE 1: 7,505

1,876 Feet



Map Produced 12/02/2020 By EMWD Staff

© EMWD