

# TRAFFIC NOISE MODELING

Traffic Noise Calculator: FHWA 77-108

Project Title: Existing CFV-17

ID	Output						Inputs													
	dBA at 50 feet			Distance to CNEL Contour			Roadway	Segment	ADT	Posted Speed Limit	Grade	% Autos	% Med Trucks	% Heavy Trucks	% Daytime	% Evening	% Night	Number of Lanes	Site Condition	Distance to Receiver
L <sub>eq-24hr</sub>	L <sub>dn</sub>	CNEL	70 dBA	65 dBA	60 dBA															
1	70.0	73.7	74.1	94	202	435	Magnolia Street	Garfield Avenue to Ellis Avenue	24,200	45	0.0%	94.0%	2.8%	3.2%	75.0%	10.0%	15.0%	4	Soft	50
2	70.4	74.2	74.5	100	216	466	Magnolia Street	Ellis Avenue to Talbert Avenue	26,800	45	0.0%	94.0%	2.8%	3.2%	75.0%	10.0%	15.0%	4	Soft	50
3	70.9	74.7	75.0	108	233	503	Magnolia Street	Talbert Avenue to Slater Avenue	30,100	45	0.0%	94.0%	2.8%	3.2%	75.0%	10.0%	15.0%	4	Soft	50
4	71.1	74.8	75.2	111	240	517	Magnolia Street	Slater Avenue to Warner Avenue	31,400	45	0.0%	94.0%	2.8%	3.2%	75.0%	10.0%	15.0%	4	Soft	50
5	68.0	71.7	72.0	68	147	318	Bushard Street	Garfield Avenue to Ellis Avenue	15,100	45	0.0%	94.0%	2.8%	3.2%	75.0%	10.0%	15.0%	4	Soft	50
6	68.2	71.9	72.3	71	153	329	Bushard Street	Ellis Avenue to Talbert Avenue	15,900	45	0.0%	94.0%	2.8%	3.2%	75.0%	10.0%	15.0%	4	Soft	50
7	68.3	72.0	72.3	72	154	333	Bushard Street	Talbert Avenue to Slater Avenue	16,200	45	0.0%	94.0%	2.8%	3.2%	75.0%	10.0%	15.0%	4	Soft	50
8	68.9	72.6	72.9	79	169	365	Bushard Street	Slater Avenue to Warner Avenue	18,600	45	0.0%	94.0%	2.8%	3.2%	75.0%	10.0%	15.0%	4	Soft	50
9	68.7	72.4	72.8	77	166	358	Bushard Street	Warner Avenue to Heil Avenue	18,100	45	0.0%	94.0%	2.8%	3.2%	75.0%	10.0%	15.0%	4	Soft	50
10	68.2	71.9	72.3	71	153	329	Bushard Street	Heil Avenue to Edinger Avenue	15,900	45	0.0%	94.0%	2.8%	3.2%	75.0%	10.0%	15.0%	4	Soft	50
11	72.3	76.1	76.4	134	289	623	Brookhurst Street	Garfield Avenue to Ellis Avenue	39,300	45	0.0%	94.0%	2.8%	3.2%	75.0%	10.0%	15.0%	6	Soft	50
12	72.1	75.8	76.2	129	278	600	Brookhurst Street	Ellis Avenue to Talbert Avenue	37,100	45	0.0%	94.0%	2.8%	3.2%	75.0%	10.0%	15.0%	6	Soft	50
13	73.4	77.1	77.5	158	340	733	Brookhurst Street	Talbert Avenue to Slater Avenue	50,100	45	0.0%	94.0%	2.8%	3.2%	75.0%	10.0%	15.0%	6	Soft	50
14	73.2	76.9	77.3	153	331	712	Brookhurst Street	Slater Avenue to Warner Avenue	48,000	45	0.0%	94.0%	2.8%	3.2%	75.0%	10.0%	15.0%	6	Soft	50
15	73.0	76.7	77.0	147	318	684	Brookhurst Street	Warner Avenue to Heil Avenue	45,200	45	0.0%	94.0%	2.8%	3.2%	75.0%	10.0%	15.0%	6	Soft	50
16	72.8	76.6	76.9	145	312	673	Brookhurst Street	Heil Avenue to Edinger Avenue	44,100	45	0.0%	94.0%	2.8%	3.2%	75.0%	10.0%	15.0%	6	Soft	50
17	72.5	76.2	76.6	138	297	639	Brookhurst Street	Edinger Avenue to Mango Lane	40,800	45	0.0%	94.0%	2.8%	3.2%	75.0%	10.0%	15.0%	6	Soft	50
18	68.6	72.3	72.7	75	162	349	Ward Street	Garfield Avenue to Ellis Avenue	17,400	45	0.0%	94.0%	2.8%	3.2%	75.0%	10.0%	15.0%	4	Soft	50
19	66.8	70.5	70.9	57	124	266	Ward Street	Ellis Avenue to Talbert Avenue	11,600	45	0.0%	94.0%	2.8%	3.2%	75.0%	10.0%	15.0%	4	Soft	50
20	66.2	70.0	70.3	53	113	245	Ward Street	Talbert Avenue to Slater Avenue	10,200	45	0.0%	94.0%	2.8%	3.2%	75.0%	10.0%	15.0%	4	Soft	50
21	65.1	68.8	69.2	44	96	206	Ward Street	Slater Avenue to Warner Avenue	7,900	45	0.0%	94.0%	2.8%	3.2%	75.0%	10.0%	15.0%	4	Soft	50
22	71.8	75.5	75.9	124	266	574	Euclid Street	I-405 NB to Talbert Street	34,700	45	0.0%	94.0%	2.8%	3.2%	75.0%	10.0%	15.0%	6	Soft	50
23	71.3	75.0	75.4	114	246	530	Euclid Street	Talbert Avenue to Slater Avenue	30,800	45	0.0%	94.0%	2.8%	3.2%	75.0%	10.0%	15.0%	6	Soft	50
24	71.5	75.2	75.6	118	254	548	Euclid Street	Slater Avenue to La Ameda Avenue	32,400	45	0.0%	94.0%	2.8%	3.2%	75.0%	10.0%	15.0%	6	Soft	50
25	72.5	76.2	76.6	138	297	639	Euclid Street	Warner Avenue to Heil Avenue	40,800	45	0.0%	94.0%	2.8%	3.2%	75.0%	10.0%	15.0%	6	Soft	50
26	72.3	76.0	76.4	134	288	621	Euclid Street	Heil Avenue to Edinger Avenue	40,300	45	0.0%	94.0%	2.8%	3.2%	75.0%	10.0%	15.0%	5	Soft	50
27	72.9	76.6	77.0	146	315	679	Harbor Boulevard	Warner Avenue to Heil Avenue	44,700	45	0.0%	94.0%	2.8%	3.2%	75.0%	10.0%	15.0%	6	Soft	50
28	72.8	76.5	76.8	143	308	664	Harbor Boulevard	Heil Avenue to Edinger Avenue	43,200	45	0.0%	94.0%	2.8%	3.2%	75.0%	10.0%	15.0%	6	Soft	50
29	72.9	76.6	77.0	147	317	682	Harbor Boulevard	Edinger Avenue to Lilac Avenue	45,000	45	0.0%	94.0%	2.8%	3.2%	75.0%	10.0%	15.0%	6	Soft	50
30	68.2	71.9	72.3	71	153	329	Garfield Avenue	Newland Street to Magnolia Street	15,900	45	0.0%	94.0%	2.8%	3.2%	75.0%	10.0%	15.0%	4	Soft	50
31	68.7	72.4	72.8	77	165	356	Garfield Avenue	Magnolia Street to Bushard Street	17,900	45	0.0%	94.0%	2.8%	3.2%	75.0%	10.0%	15.0%	4	Soft	50
32	68.3	72.0	72.4	73	156	337	Garfield Avenue	Bushard Street to Brookhurst Street	16,500	45	0.0%	94.0%	2.8%	3.2%	75.0%	10.0%	15.0%	4	Soft	50
33	65.9	69.6	70.0	50	107	232	Garfield Avenue	Brookhurst Street to Ward Street	9,400	45	0.0%	94.0%	2.8%	3.2%	75.0%	10.0%	15.0%	4	Soft	50
34	69.2	72.9	73.3	83	179	386	Ellis Avenue	Newland Street to Magnolia Street	20,200	45	0.0%	94.0%	2.8%	3.2%	75.0%	10.0%	15.0%	4	Soft	50
35	69.6	73.3	73.7	88	190	409	Ellis Avenue	Magnolia Street to Bushard Street	22,100	45	0.0%	94.0%	2.8%	3.2%	75.0%	10.0%	15.0%	4	Soft	50
36	70.3	74.0	74.4	98	211	455	Ellis Avenue	Bushard Street to Brookhurst Street	25,900	45	0.0%	94.0%	2.8%	3.2%	75.0%	10.0%	15.0%	4	Soft	50
37	69.5	73.2	73.6	87	187	402	Ellis Avenue	Brookhurst Street to Ward Street	21,500	45	0.0%	94.0%	2.8%	3.2%	75.0%	10.0%	15.0%	4	Soft	50
38	71.0	74.7	75.1	109	236	507	Ellis Avenue	Ward Street to I-405 SB Off-Ramp	30,500	45	0.0%	94.0%	2.8%	3.2%	75.0%	10.0%	15.0%	4	Soft	50
39	69.7	73.4	73.8	89	192	413	Talbert Avenue	Newland Street to Magnolia Street	22,400	45	0.0%	94.0%	2.8%	3.2%	75.0%	10.0%	15.0%	4	Soft	50
40	70.7	74.4	74.8	104	225	484	Talbert Avenue	Magnolia Street to Bushard Street	28,400	45	0.0%	94.0%	2.8%	3.2%	75.0%	10.0%	15.0%	4	Soft	50
41	71.2	74.9	75.3	113	242	522	Talbert Avenue	Bushard Street to Brookhurst Street	31,100	45	0.0%	94.0%	2.8%	3.2%	75.0%	10.0%	15.0%	5	Soft	50
42	69.7	73.4	73.8	90	193	416	Talbert Avenue	Brookhurst Street to Ward Street	22,600	45	0.0%	94.0%	2.8%	3.2%	75.0%	10.0%	15.0%	4	Soft	50
43	71.0	74.7	75.1	109	235	505	Talbert Avenue	Ward Street to Euclid Street	28,700	45	0.0%	94.0%	2.8%	3.2%	75.0%	10.0%	15.0%	6	Soft	50
44	68.8	72.5	72.9	78	169	364	Slater Avenue	Newland Street to Magnolia Street	18,500	45	0.0%	94.0%	2.8%	3.2%	75.0%	10.0%	15.0%	4	Soft	50
45	68.8	72.5	72.9	78	168	361	Slater Avenue	Magnolia Street to Bushard Street	18,300	45	0.0%	94.0%	2.8%	3.2%	75.0%	10.0%	15.0%	4	Soft	50
46	69.2	72.9	73.3	83	178	383	Slater Avenue	Bushard Street to Brookhurst Street	20,000	45	0.0%	94.0%	2.8%	3.2%	75.0%	10.0%	15.0%	4	Soft	50
47	68.4	72.1	72.5	73	157	339	Slater Avenue	Brookhurst Street to Ward Street	21,100	40	0.0%	94.0%	2.8%	3.2%	75.0%	10.0%	15.0%	4	Soft	50
48	67.6	71.3	71.7	65	140	301	Slater Avenue	Ward Street to Euclid Street	17,600	40	0.0%	94.0%	2.8%	3.2%	75.0%	10.0%	15.0%	4	Soft	50
49	68.4	72.1	72.5	73	157	338	Slater Avenue	Euclid Street to New Hope Street	16,600	45	0.0%	94.0%	2.8%	3.2%	75.0%	10.0%	15.0%	4	Soft	50
50	71.7	75.4	75.8	121	261	561	Warner Avenue	Magnolia Street to Bushard Street	33,600	45	0.0%	94.0%	2.8%	3.2%	75.0%	10.0%	15.0%	6	Soft	50
51	72.4	76.1	76.5	135	292	629	Warner Avenue	Bushard Street to Brookhurst Street	39,800	45	0.0%	94.0%	2.8%	3.2%	75.0%	10.0%	15.0%	6	Soft	50
52	72.7	76.4	76.8	141	304	656	Warner Avenue	Brookhurst Street to Ward Street	42,400	45	0.0%	94.0%	2.8%	3.2%	75.0%	10.0%	15.0%	6	Soft	50

53	72.6	76.3	76.7	140	301	649	Warner Avenue	Ward Street to Euclid Street	41,800	45	0.0%	94.0%	2.8%	3.2%	75.0%	10.0%	15.0%	6	Soft	50
54	73.2	76.9	77.3	153	329	709	Warner Avenue	Euclid Street to New Hope Street	47,700	45	0.0%	94.0%	2.8%	3.2%	75.0%	10.0%	15.0%	6	Soft	50
55	69.3	73.0	73.4	84	181	391	Warner Avenue	New Hope Street to Harbor Boulevard	19,500	45	0.0%	94.0%	2.8%	3.2%	75.0%	10.0%	15.0%	6	Soft	50
56	63.6	67.4	67.7	35	76	164	Heil Avenue	Magnolia Street to Bushard Street	5,600	45	0.0%	94.0%	2.8%	3.2%	75.0%	10.0%	15.0%	4	Soft	50
57	64.1	67.8	68.2	38	81	175	Heil Avenue	Bushard Street to Brookhurst Street	6,200	45	0.0%	94.0%	2.8%	3.2%	75.0%	10.0%	15.0%	4	Soft	50
58	63.6	67.3	67.7	35	75	162	Heil Avenue	Euclid Street to Newhope Street	5,500	45	0.0%	94.0%	2.8%	3.2%	75.0%	10.0%	15.0%	4	Soft	50
59	64.4	68.1	68.4	39	85	183	Heil Avenue	Newhope Street to Harbor Boulevard	6,600	45	0.0%	94.0%	2.8%	3.2%	75.0%	10.0%	15.0%	4	Soft	50
60	70.2	73.9	74.3	96	207	446	Edinger Avenue	Bushard Street to Brookhurst Street	25,100	45	0.0%	94.0%	2.8%	3.2%	75.0%	10.0%	15.0%	4	Soft	50
61	70.7	74.4	74.8	105	226	486	Edinger Avenue	Brookhurst Street to Ward Street	28,600	45	0.0%	94.0%	2.8%	3.2%	75.0%	10.0%	15.0%	4	Soft	50
62	71.4	75.1	75.5	116	250	538	Edinger Avenue	Ward Street to Euclid Street	33,300	45	0.0%	94.0%	2.8%	3.2%	75.0%	10.0%	15.0%	4	Soft	50

Traffic Noise Calculator: FHWA 77-108

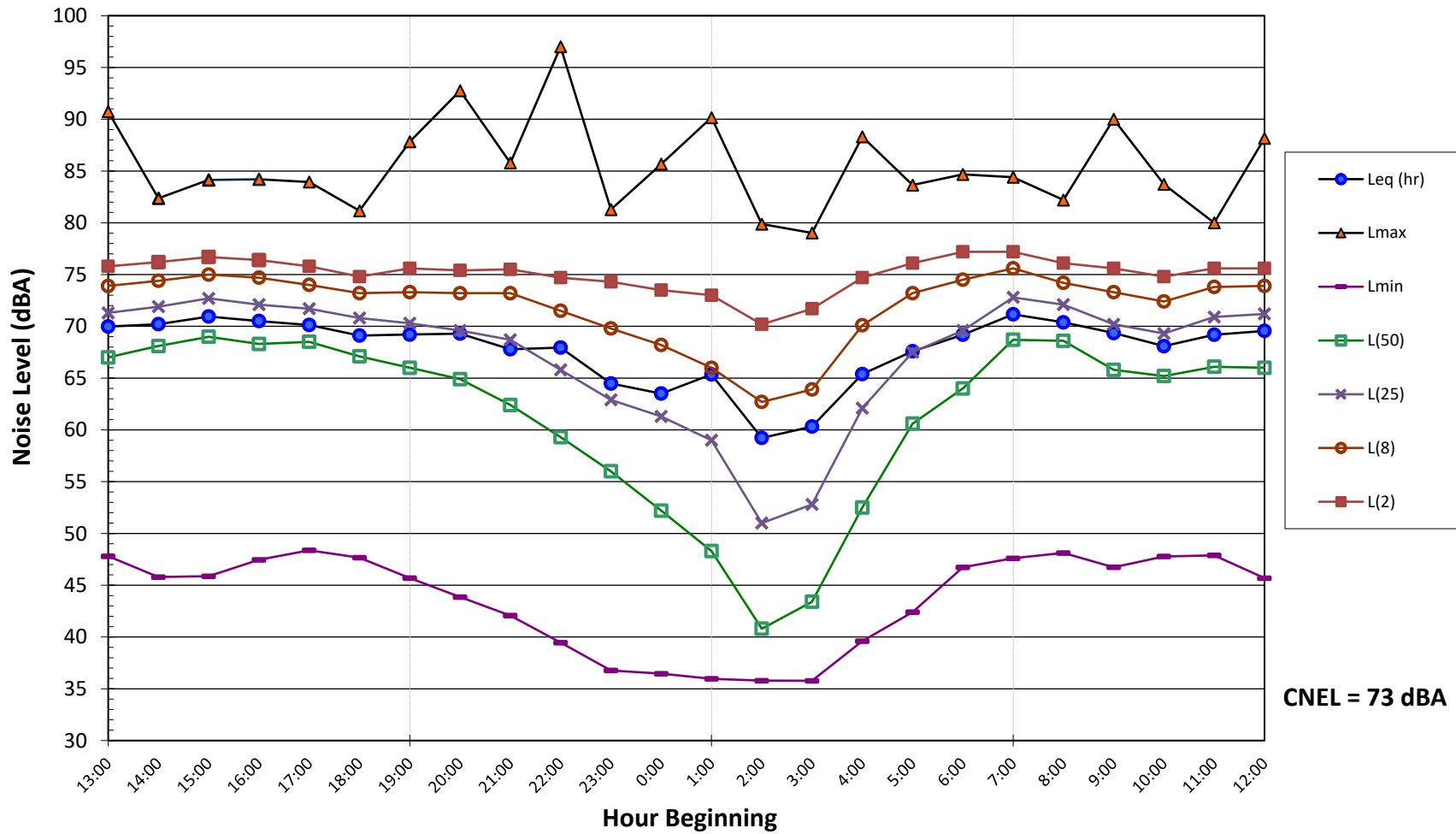
Project Title: Proposed CFV-17

ID	Output						Inputs													
	dBA at 50 feet			Distance to CNEL Contour			Roadway	Segment	ADT	Posted Speed Limit	Grade	% Autos	% Med Trucks	% Heavy Trucks	% Daytime	% Evening	% Night	Number of Lanes	Site Condition	Distance to Receiver
L <sub>eq-24hr</sub>	L <sub>dn</sub>	CNEL	70 dBA	65 dBA	60 dBA															
1	70.0	73.7	74.1	94	202	435	Magnolia Street	Garfield Avenue to Ellis Avenue	24,200	45	0.0%	94.0%	2.8%	3.2%	75.0%	10.0%	15.0%	4	Soft	50
2	70.5	74.2	74.6	101	217	468	Magnolia Street	Ellis Avenue to Talbert Avenue	27,000	45	0.0%	94.0%	2.8%	3.2%	75.0%	10.0%	15.0%	4	Soft	50
3	71.0	74.7	75.1	109	234	504	Magnolia Street	Talbert Avenue to Slater Avenue	30,200	45	0.0%	94.0%	2.8%	3.2%	75.0%	10.0%	15.0%	4	Soft	50
4	71.1	74.8	75.2	111	240	517	Magnolia Street	Slater Avenue to Warner Avenue	31,400	45	0.0%	94.0%	2.8%	3.2%	75.0%	10.0%	15.0%	4	Soft	50
5	68.1	71.8	72.2	70	150	323	Bushard Street	Garfield Avenue to Ellis Avenue	15,500	45	0.0%	94.0%	2.8%	3.2%	75.0%	10.0%	15.0%	4	Soft	50
6	68.3	72.0	72.4	72	155	334	Bushard Street	Ellis Avenue to Talbert Avenue	16,300	45	0.0%	94.0%	2.8%	3.2%	75.0%	10.0%	15.0%	4	Soft	50
7	68.3	72.0	72.3	72	154	333	Bushard Street	Talbert Avenue to Slater Avenue	16,200	45	0.0%	94.0%	2.8%	3.2%	75.0%	10.0%	15.0%	4	Soft	50
8	68.9	72.6	73.0	79	171	369	Bushard Street	Slater Avenue to Warner Avenue	18,900	45	0.0%	94.0%	2.8%	3.2%	75.0%	10.0%	15.0%	4	Soft	50
9	68.9	72.6	73.0	79	171	369	Bushard Street	Warner Avenue to Heil Avenue	18,900	45	0.0%	94.0%	2.8%	3.2%	75.0%	10.0%	15.0%	4	Soft	50
10	68.2	71.9	72.3	71	153	329	Bushard Street	Heil Avenue to Edinger Avenue	15,900	45	0.0%	94.0%	2.8%	3.2%	75.0%	10.0%	15.0%	4	Soft	50
11	72.7	76.4	76.8	141	305	657	Brookhurst Street	Garfield Avenue to Ellis Avenue	42,500	45	0.0%	94.0%	2.8%	3.2%	75.0%	10.0%	15.0%	6	Soft	50
12	72.5	76.2	76.6	137	295	635	Brookhurst Street	Ellis Avenue to Talbert Avenue	40,400	45	0.0%	94.0%	2.8%	3.2%	75.0%	10.0%	15.0%	6	Soft	50
13	73.6	77.3	77.7	163	351	757	Brookhurst Street	Talbert Avenue to Slater Avenue	52,600	45	0.0%	94.0%	2.8%	3.2%	75.0%	10.0%	15.0%	6	Soft	50
14	73.3	77.0	77.4	155	333	718	Brookhurst Street	Slater Avenue to Warner Avenue	48,600	45	0.0%	94.0%	2.8%	3.2%	75.0%	10.0%	15.0%	6	Soft	50
15	73.0	76.7	77.0	147	318	684	Brookhurst Street	Warner Avenue to Heil Avenue	45,200	45	0.0%	94.0%	2.8%	3.2%	75.0%	10.0%	15.0%	6	Soft	50
16	72.8	76.6	76.9	145	312	673	Brookhurst Street	Heil Avenue to Edinger Avenue	44,100	45	0.0%	94.0%	2.8%	3.2%	75.0%	10.0%	15.0%	6	Soft	50
17	72.5	76.2	76.6	138	297	639	Brookhurst Street	Edinger Avenue to Mango Lane	40,800	45	0.0%	94.0%	2.8%	3.2%	75.0%	10.0%	15.0%	6	Soft	50
18	69.4	73.1	73.5	85	183	394	Ward Street	Garfield Avenue to Ellis Avenue	20,900	45	0.0%	94.0%	2.8%	3.2%	75.0%	10.0%	15.0%	4	Soft	50
19	68.7	72.4	72.8	77	165	356	Ward Street	Ellis Avenue to Talbert Avenue	17,900	45	0.0%	94.0%	2.8%	3.2%	75.0%	10.0%	15.0%	4	Soft	50
20	66.3	70.0	70.4	53	114	246	Ward Street	Talbert Avenue to Slater Avenue	10,300	45	0.0%	94.0%	2.8%	3.2%	75.0%	10.0%	15.0%	4	Soft	50
21	65.4	69.1	69.5	46	100	215	Ward Street	Slater Avenue to Warner Avenue	8,400	45	0.0%	94.0%	2.8%	3.2%	75.0%	10.0%	15.0%	4	Soft	50
22	72.2	75.9	76.3	131	282	608	Euclid Street	I-405 NB to Talbert Street	37,900	45	0.0%	94.0%	2.8%	3.2%	75.0%	10.0%	15.0%	6	Soft	50
23	71.3	75.0	75.4	114	246	530	Euclid Street	Talbert Avenue to Slater Avenue	30,800	45	0.0%	94.0%	2.8%	3.2%	75.0%	10.0%	15.0%	6	Soft	50
24	71.7	75.4	75.8	122	262	565	Euclid Street	Slater Avenue to La Ameda Avenue	33,900	45	0.0%	94.0%	2.8%	3.2%	75.0%	10.0%	15.0%	6	Soft	50
25	72.8	76.5	76.9	144	311	670	Euclid Street	Warner Avenue to Heil Avenue	43,800	45	0.0%	94.0%	2.8%	3.2%	75.0%	10.0%	15.0%	6	Soft	50
26	72.4	76.2	76.5	136	294	633	Euclid Street	Heil Avenue to Edinger Avenue	41,500	45	0.0%	94.0%	2.8%	3.2%	75.0%	10.0%	15.0%	5	Soft	50
27	72.9	76.6	77.0	146	315	679	Harbor Boulevard	Warner Avenue to Heil Avenue	44,700	45	0.0%	94.0%	2.8%	3.2%	75.0%	10.0%	15.0%	6	Soft	50
28	72.8	76.5	76.8	143	308	664	Harbor Boulevard	Heil Avenue to Edinger Avenue	43,200	45	0.0%	94.0%	2.8%	3.2%	75.0%	10.0%	15.0%	6	Soft	50
29	73.1	76.8	77.1	150	323	695	Harbor Boulevard	Edinger Avenue to Lilac Avenue	46,300	45	0.0%	94.0%	2.8%	3.2%	75.0%	10.0%	15.0%	6	Soft	50
30	68.2	71.9	72.3	71	153	329	Garfield Avenue	Newland Street to Magnolia Street	15,900	45	0.0%	94.0%	2.8%	3.2%	75.0%	10.0%	15.0%	4	Soft	50
31	68.7	72.4	72.8	77	166	357	Garfield Avenue	Magnolia Street to Bushard Street	18,000	45	0.0%	94.0%	2.8%	3.2%	75.0%	10.0%	15.0%	4	Soft	50
32	68.3	72.0	72.4	73	156	337	Garfield Avenue	Bushard Street to Brookhurst Street	16,500	45	0.0%	94.0%	2.8%	3.2%	75.0%	10.0%	15.0%	4	Soft	50
33	65.9	69.6	70.0	50	107	232	Garfield Avenue	Brookhurst Street to Ward Street	9,400	45	0.0%	94.0%	2.8%	3.2%	75.0%	10.0%	15.0%	4	Soft	50
34	69.3	73.0	73.4	84	182	392	Ellis Avenue	Newland Street to Magnolia Street	20,700	45	0.0%	94.0%	2.8%	3.2%	75.0%	10.0%	15.0%	4	Soft	50
35	69.6	73.3	73.7	88	191	411	Ellis Avenue	Magnolia Street to Bushard Street	22,200	45	0.0%	94.0%	2.8%	3.2%	75.0%	10.0%	15.0%	4	Soft	50
36	70.3	74.0	74.4	99	212	457	Ellis Avenue	Bushard Street to Brookhurst Street	26,100	45	0.0%	94.0%	2.8%	3.2%	75.0%	10.0%	15.0%	4	Soft	50
37	69.6	73.3	73.7	88	189	407	Ellis Avenue	Brookhurst Street to Ward Street	21,900	45	0.0%	94.0%	2.8%	3.2%	75.0%	10.0%	15.0%	4	Soft	50
38	71.1	74.8	75.2	111	239	514	Ellis Avenue	Ward Street to I-405 SB Off-Ramp	31,100	45	0.0%	94.0%	2.8%	3.2%	75.0%	10.0%	15.0%	4	Soft	50
39	69.8	73.5	73.9	91	196	422	Talbert Avenue	Newland Street to Magnolia Street	23,100	45	0.0%	94.0%	2.8%	3.2%	75.0%	10.0%	15.0%	4	Soft	50
40	70.8	74.5	74.9	106	228	492	Talbert Avenue	Magnolia Street to Bushard Street	29,100	45	0.0%	94.0%	2.8%	3.2%	75.0%	10.0%	15.0%	4	Soft	50
41	71.5	75.2	75.6	118	253	546	Talbert Avenue	Bushard Street to Brookhurst Street	33,200	45	0.0%	94.0%	2.8%	3.2%	75.0%	10.0%	15.0%	5	Soft	50
42	69.8	73.5	73.9	90	195	419	Talbert Avenue	Brookhurst Street to Ward Street	22,900	45	0.0%	94.0%	2.8%	3.2%	75.0%	10.0%	15.0%	4	Soft	50
43	71.1	74.8	75.2	111	239	515	Talbert Avenue	Ward Street to Euclid Street	29,500	45	0.0%	94.0%	2.8%	3.2%	75.0%	10.0%	15.0%	6	Soft	50
44	69.0	72.7	73.1	80	173	373	Slater Avenue	Newland Street to Magnolia Street	19,200	45	0.0%	94.0%	2.8%	3.2%	75.0%	10.0%	15.0%	4	Soft	50
45	68.9	72.6	73.0	79	171	368	Slater Avenue	Magnolia Street to Bushard Street	18,800	45	0.0%	94.0%	2.8%	3.2%	75.0%	10.0%	15.0%	4	Soft	50
46	69.2	72.9	73.3	83	178	384	Slater Avenue	Bushard Street to Brookhurst Street	20,100	45	0.0%	94.0%	2.8%	3.2%	75.0%	10.0%	15.0%	4	Soft	50
47	68.4	72.1	72.5	73	157	339	Slater Avenue	Brookhurst Street to Ward Street	21,100	40	0.0%	94.0%	2.8%	3.2%	75.0%	10.0%	15.0%	4	Soft	50
48	67.8	71.5	71.9	67	144	311	Slater Avenue	Ward Street to Euclid Street	18,500	40	0.0%	94.0%	2.8%	3.2%	75.0%	10.0%	15.0%	4	Soft	50
49	69.1	72.8	73.2	82	177	380	Slater Avenue	Euclid Street to New Hope Street	19,800	45	0.0%	94.0%	2.8%	3.2%	75.0%	10.0%	15.0%	4	Soft	50
50	71.7	75.4	75.8	121	261	561	Warner Avenue	Magnolia Street to Bushard Street	33,600	45	0.0%	94.0%	2.8%	3.2%	75.0%	10.0%	15.0%	6	Soft	50
51	72.5	76.2	76.5	137	294	634	Warner Avenue	Bushard Street to Brookhurst Street	40,300	45	0.0%	94.0%	2.8%	3.2%	75.0%	10.0%	15.0%	6	Soft	50
52	72.7	76.4	76.8	141	304	656	Warner Avenue	Brookhurst Street to Ward Street	42,400	45	0.0%	94.0%	2.8%	3.2%	75.0%	10.0%	15.0%	6	Soft	50

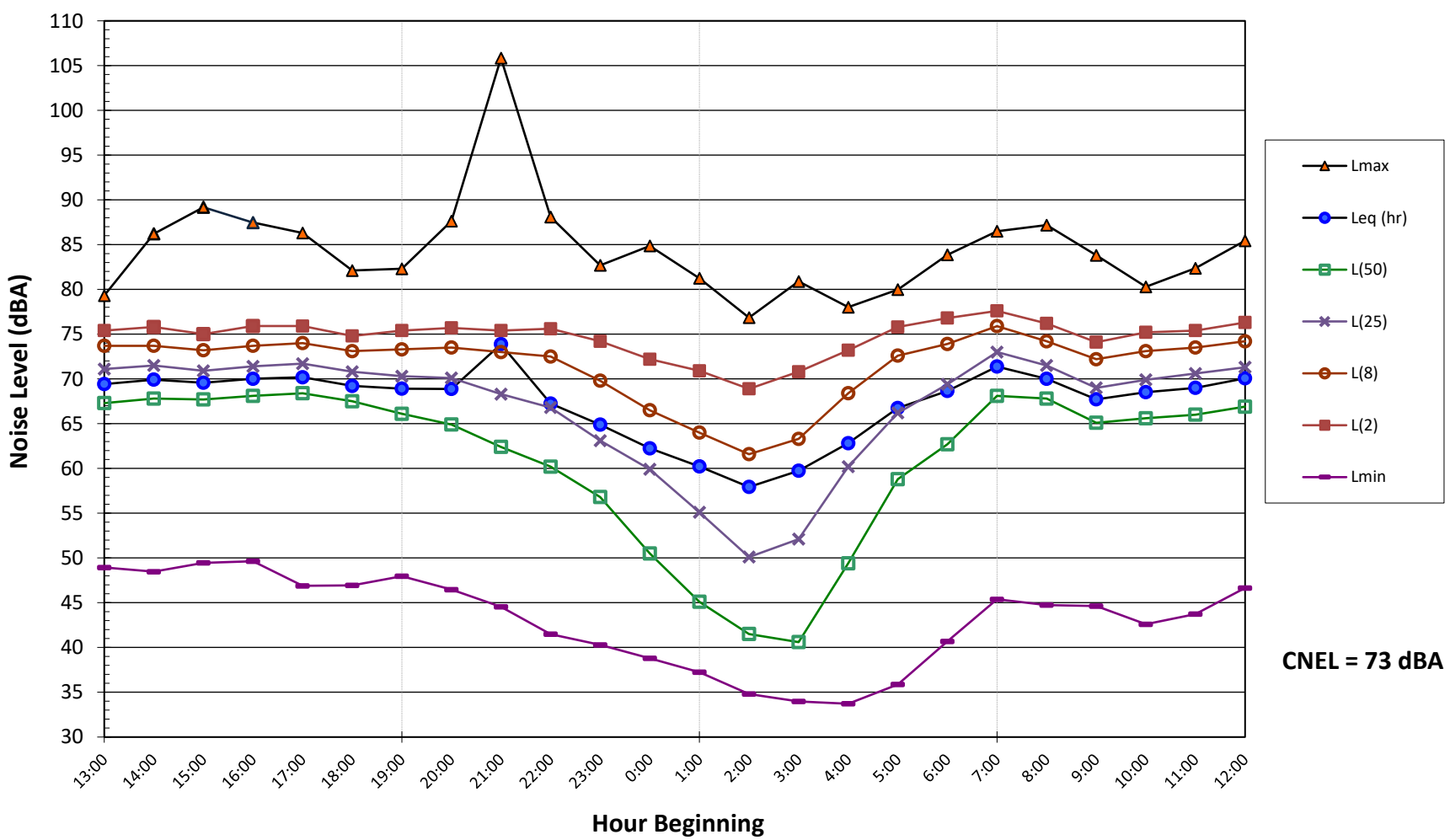
53	72.7	76.4	76.8	142	306	659	Warner Avenue	Ward Street to Euclid Street	42,700	45	0.0%	94.0%	2.8%	3.2%	75.0%	10.0%	15.0%	6	Soft	50
54	73.2	76.9	77.3	153	329	709	Warner Avenue	Euclid Street to New Hope Street	47,700	45	0.0%	94.0%	2.8%	3.2%	75.0%	10.0%	15.0%	6	Soft	50
55	69.5	73.2	73.5	86	186	400	Warner Avenue	New Hope Street to Harbor Boulevard	20,200	45	0.0%	94.0%	2.8%	3.2%	75.0%	10.0%	15.0%	6	Soft	50
56	63.6	67.4	67.7	35	76	164	Heil Avenue	Magnolia Street to Bushard Street	5,600	45	0.0%	94.0%	2.8%	3.2%	75.0%	10.0%	15.0%	4	Soft	50
57	64.5	68.2	68.6	40	87	187	Heil Avenue	Bushard Street to Brookhurst Street	6,800	45	0.0%	94.0%	2.8%	3.2%	75.0%	10.0%	15.0%	4	Soft	50
58	64.9	68.6	68.9	43	92	197	Heil Avenue	Euclid Street to Newhope Street	7,400	45	0.0%	94.0%	2.8%	3.2%	75.0%	10.0%	15.0%	4	Soft	50
59	65.2	68.9	69.3	45	97	208	Heil Avenue	Newhope Street to Harbor Boulevard	8,000	45	0.0%	94.0%	2.8%	3.2%	75.0%	10.0%	15.0%	4	Soft	50
60	70.4	74.1	74.5	99	213	460	Edinger Avenue	Bushard Street to Brookhurst Street	26,300	45	0.0%	94.0%	2.8%	3.2%	75.0%	10.0%	15.0%	4	Soft	50
61	71.2	74.9	75.3	112	241	520	Edinger Avenue	Brookhurst Street to Ward Street	31,600	45	0.0%	94.0%	2.8%	3.2%	75.0%	10.0%	15.0%	4	Soft	50
62	71.4	75.1	75.5	116	250	538	Edinger Avenue	Ward Street to Euclid Street	33,300	45	0.0%	94.0%	2.8%	3.2%	75.0%	10.0%	15.0%	4	Soft	50

# NOISE MONITORING LONG-TERM GRAPHS

**Noise Levels at LT-1**  
**Edinger Avenue, east of Ward Street - Fountain Valley, CA**  
**Tuesday, May 3 through Wednesday, May 4, 2022**

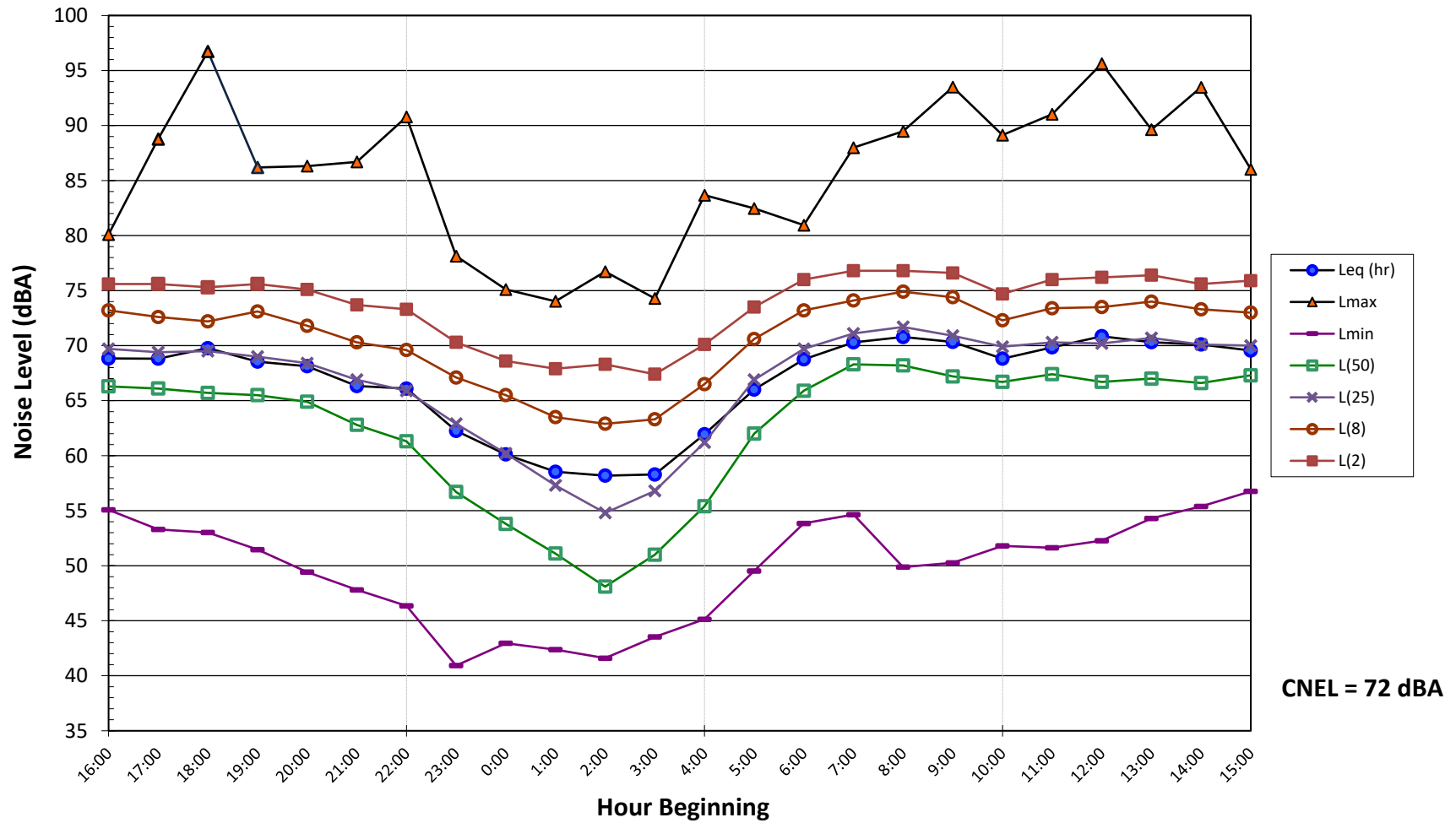


**Noise Levels at LT-1**  
**Edinger Avenue, east of Ward Street - Fountain Valley, CA**  
**Wednesday, May 4 through Thursday, May 5, 2022**

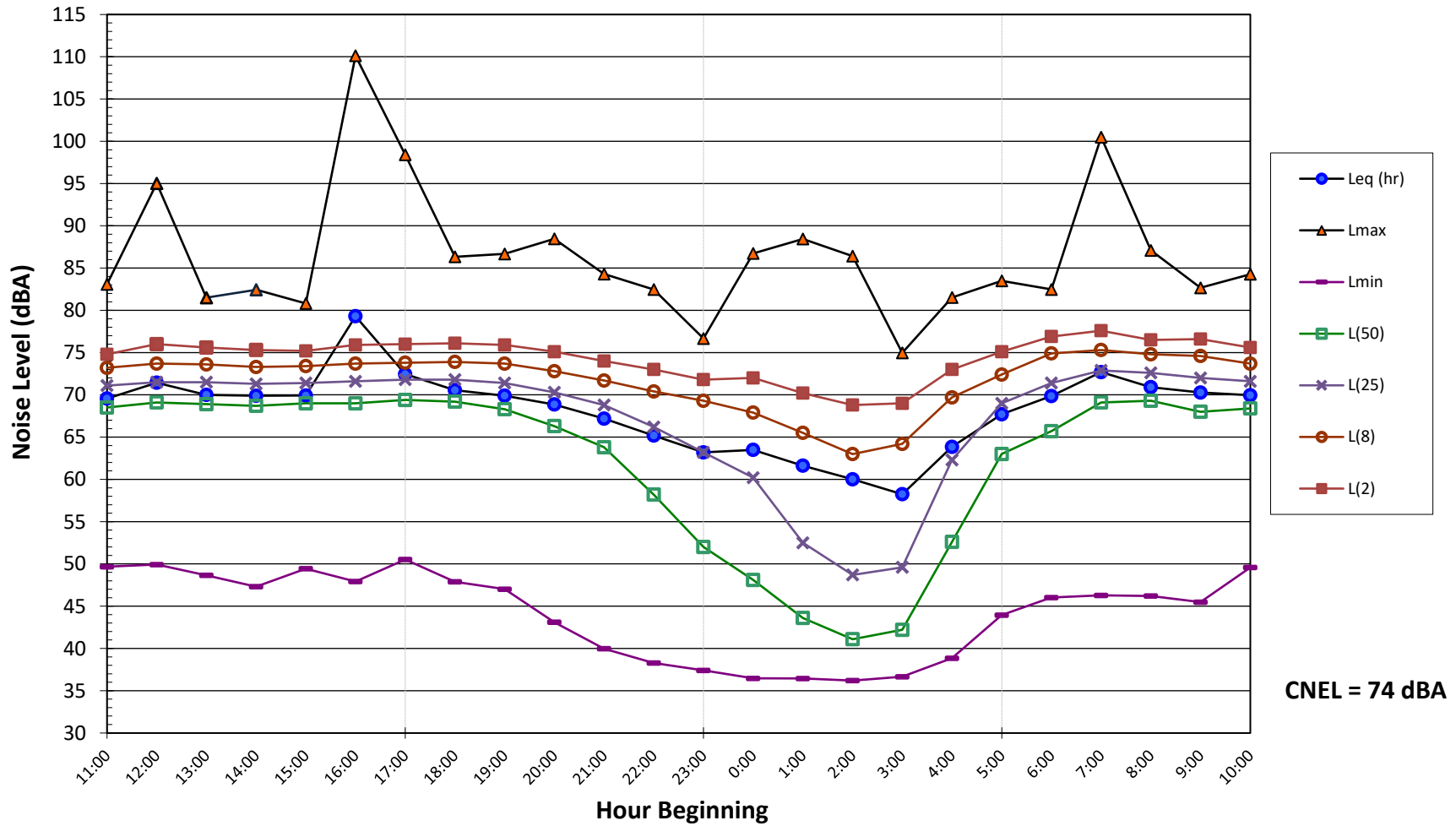




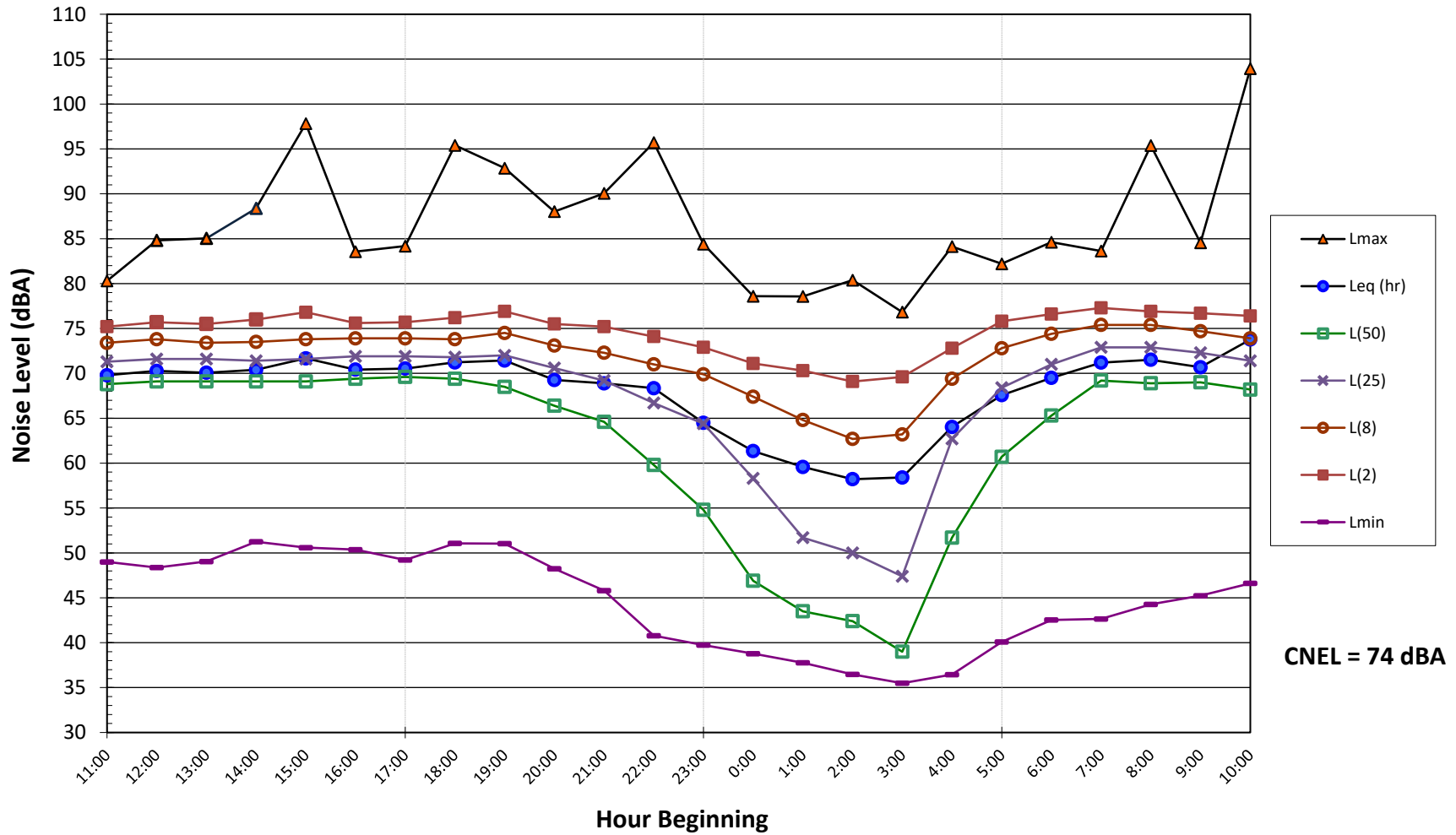
**Noise Levels at LT-2**  
**Brookhurst Street, north of Ellis Avenue - Fountain Valley, CA**  
**Monday, May 9 through Tuesday, May 10, 2022**



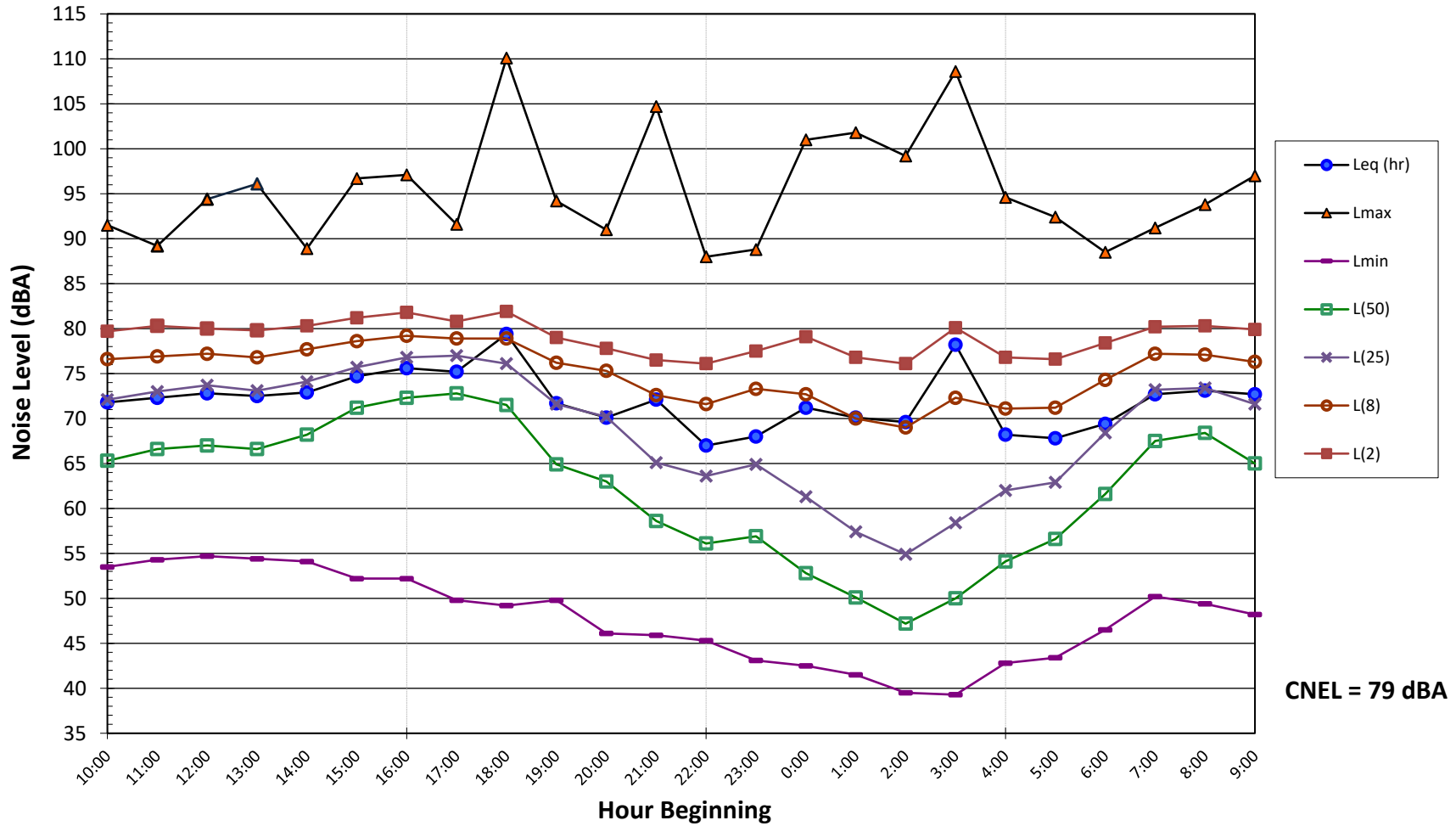
**Noise Levels at LT-3**  
**Magnolia Street, south of Lemongrass Court - Fountain Valley, CA**  
**Tuesday, May 3 through Wednesday, May 4, 2022**



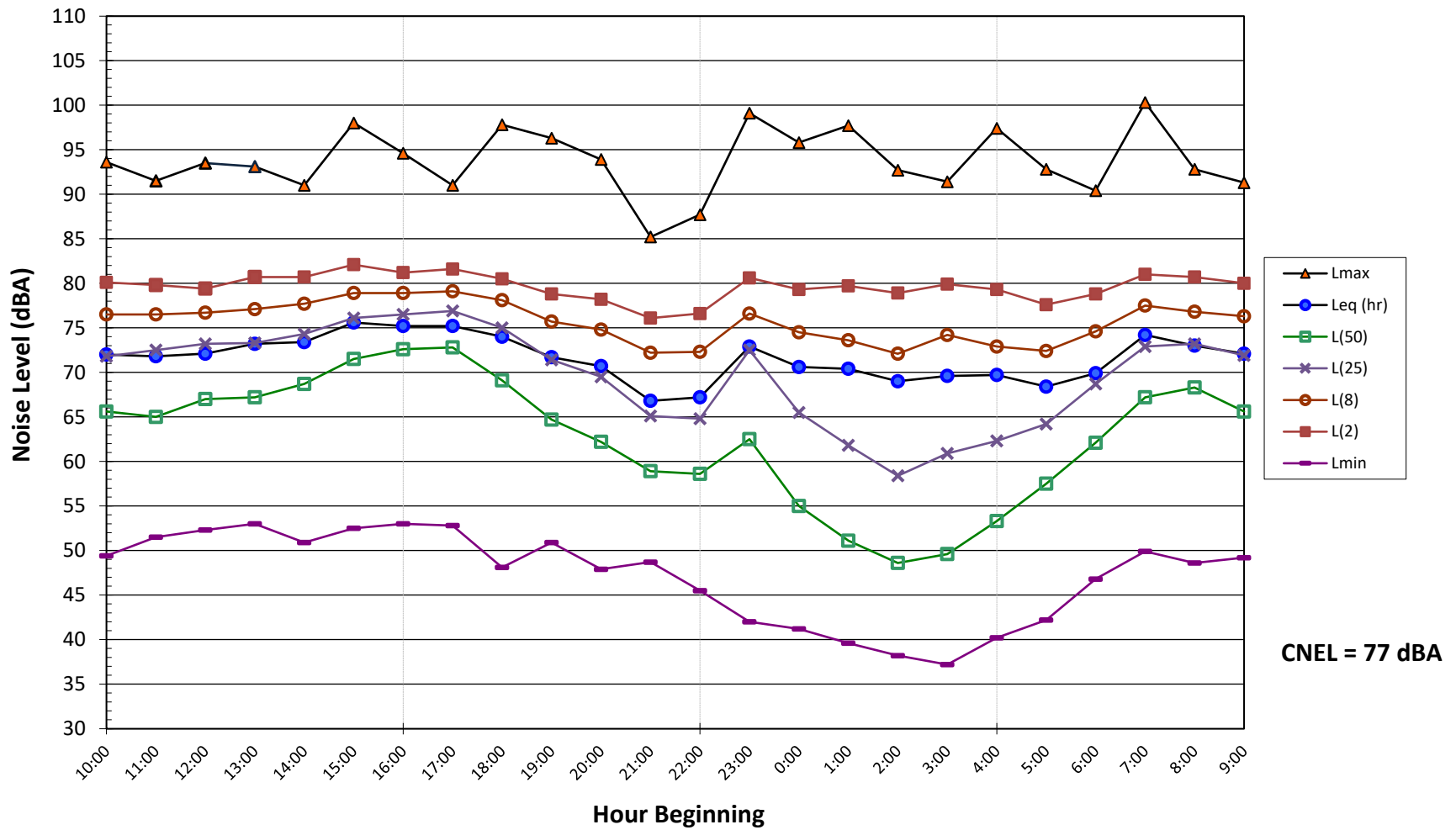
**Noise Levels at LT-3**  
**Magnolia Street, south of Lemongrass Court - Fountain Valley, CA**  
**Wednesday, May 4 through Thursday, May 5, 2022**



**Noise Levels at LT-4**  
**Talbert Avenue, west of Euclid Street - Fountain Valley, CA**  
**Tuesday, May 3 through Wednesday, May 4, 2022**



**Noise Levels at LT-4**  
**Talbert Avenue, west of Euclid Street - Fountain Valley, CA**  
**Wednesday, May 4 through Thursday, May 5, 2022**



# LOCAL REGULATIONS AND STANDARDS

## Fountain Valley Municipal Code

[Up](#)   [Previous](#)   [Next](#)   [Main](#)   [Collapse](#)   [Search](#)   [Print](#)   [No Frames](#)[Title 6 HEALTH AND SANITATION](#)**Chapter 6.10 LEAF BLOWERS**

---

**6.10.010 Definitions.**

---

As used in this chapter, the following terms shall have meanings as set forth below:

“Leaf blower” means any machine, however powered, used to blow leaves, dirt and other debris off sidewalk, driveways, lawns and other surfaces.

“Parcel” means an area of real property with a separate or distinct number or other designation shown on a plot recorded in the office of the county recorder. Contiguous parcels owned by the same individual or entity shall be considered one parcel for purposes of this section. (Ord. 1164 § 1, 1991)

**6.10.020 Unlawful to propel debris beyond parcel boundary.**

---

It is unlawful for any person to use or operate any leaf blower in such a manner as to blow, dispel or make airborne, dust, leaves, grass cuttings, paper, trash or any other type of unattached debris or material, beyond the parcel boundaries of the parcel being cleaned, unless the consent of the adjoining owner or person in possession is obtained. It is unlawful for any person to use or operate any leaf blower within the city in such a way as to blow leaves, dirt and other debris onto the public rights-of-way and to allow such debris to remain there in excess of thirty minutes. (Ord. 1164 § 1, 1991)

**6.10.030 Special prohibitions.**

---

It is unlawful for any person to operate a leaf blower within a residential zone or within one hundred feet of a residential zone of the city except under the following conditions:

- (1) Time Restrictions. Leaf blowers shall not be operated except between the hours of eight a.m. and six p.m. Monday through Friday and nine a.m. to six p.m. on Saturday, and at no time on Sunday.
- (2) Distance Restriction. Leaf blowers shall not be operated within a horizontal distance of ten feet of any operable window, door, or mechanical air intake opening or duct.
- (3) Duration of Use Restriction. Leaf blowers shall not be operated for more than fifteen minutes per hour on parcels less than one-half acre and no more than thirty minutes per hour on parcels greater than one-half acre.
- (4) Number Restrictions. No person shall operate more than one leaf blower per parcel.
- (5) The maximum decibel level of seventy dBA as measured ten feet from the leaf blower shall not be exceeded. (Ord. 1164 § 1, 1991)

**6.10.040 Violations—Penalty.**

---

Any person, firm or corporation violating any of the provisions of this chapter is guilty of an infraction and is punishable by (1) a fine not exceeding one hundred dollars for a first violation; (2) a fine not exceeding two hundred dollars for a second violation of this chapter within one year; and (3) a fine not exceeding five hundred dollars for each additional violation of this chapter within one year. (Ord. 1164 § 1, 1991)

---

View the [mobile version](#).

**Fountain Valley Municipal Code**

[Up](#)      [Previous](#)      [Next](#)      [Main](#)      [Collapse](#)      [Search](#)      [Print](#)      [No Frames](#)

[Title 6 HEALTH AND SANITATION](#)**Chapter 6.28 NOISE CONTROL**

---

**6.28.010 Declaration of policy.**

---

(a) In order to control unnecessary, excessive and annoying sounds emanating from incorporated areas of the city, it is declared to be the policy of the city to prohibit such sounds generated from all sources as specified in this chapter.

(b) It is determined that certain noise levels are detrimental to the public health, welfare and safety and contrary to public interest; therefore, the city council does ordain and declare that creating, maintaining, causing or allowing to create, maintain or cause any noise in a manner prohibited by or not in conformity with the provisions of this chapter, is a public nuisance and shall be punishable as such. (Ord. 806 § 2, 1976)

**6.28.020 Definitions.**

---

The following words, phrases and terms as used in this chapter shall have the meaning as indicated below:

- (1) "Ambient noise level" means the all-encompassing noise level associated with a given environment, being a composite of sounds from all sources, excluding the alleged offensive noise, at the location and approximate time at which a comparison with the alleged offensive noise is to be made.
- (2) "Cumulative period" means an additive period of time composed of individual time segments which may be continuous or interrupted.
- (3) "Decibel" (dB) means a unit which denotes the ratio between two quantities which are proportional to power; the number of decibels corresponding to the ratio of two amounts of power is ten times the logarithm to the base ten of this ratio.
- (4) "Dwelling unit" means a single unit providing complete, independent living facilities for one or more persons including permanent provisions for living, sleeping, eating, cooking and sanitation.
- (5) "Emergency machinery, vehicle or work" means any machinery, vehicle or work used, employed or performed in an effort to protect, provide or restore safe conditions in the community or for the citizenry, or work by private or public utilities when restoring utility service.
- (6) "Fixed noise source" means a stationary device which creates sounds while fixed or motionless including but not limited to industrial and commercial machinery and equipment, pumps, fans, compressors, generators, air conditioners and refrigerator equipment.
- (7) "Grading" means any excavating or filling of earth material, or any combination thereof, conducted at a site to prepare said site for construction or other improvements thereon.
- (8) "Impact noise" means the noise produced by the collision of one mass in motion with a second mass which may be either in motion or at rest.
- (9) "Mobile noise source" means any noise source other than a fixed noise source.
- (10) "Noise level" means the "A" weighted sound pressure level in decibels obtained by using a sound level meter at slow response with a reference pressure of twenty microNewtons per square meter. The unit of measurement shall be designated as dB(A).
- (11) "Noise variance board" means an administrative board of five members appointed by the board of supervisors of the county, per Title 4, Division 6, Article 1 of the codified ordinances of the county.
- (12) "Person" means a person, firm, association, copartnership, joint venture, corporation or any entity, public or private in nature.
- (13) "Residential property" means a parcel of real property which is developed and used either in part or in whole for residential purposes, other than transient uses such as hotels and motels.



(14) “Simple tone noise” means a noise characterized by a predominant frequency or frequencies so that other frequencies cannot be readily distinguished.

(15) “Sound level meter” means an instrument meeting American National Standard Institute’s Standard S1.4-1971 for Type 1 or Type 2 sound level meters or an instrument and the associated recording and analyzing equipment which will provide equivalent data.

(16) “Sound pressure level” of a sound, in decibels, means twenty times the logarithm to the base ten of the ratio of the pressure of the sound to a referenced pressure, which reference pressure shall be explicitly stated. (Ord. 806 § 2, 1976)

**6.28.030 Noise level measurement criteria.**

Any noise level measurements made pursuant to the provisions of this chapter shall be performed using a sound level meter as defined in Section [6.28.020](#). (Ord. 806 § 2, 1976)

**6.28.040 Designated noise zone.**

The residential properties hereinafter described are assigned to the following noise zones:

Noise Zone 1: All properties located in residential zone districts. (Ord. 806 § 2, 1976)

**6.28.050 Exterior noise standards.**

(a) The following noise standards, unless otherwise specifically indicated, shall apply to all residential property within a designated noise zone:

Noise Zone	Noise Standards	
	Noise Level	Time Period
1	55 dB(A)	7 a.m. — 10 p.m.
	50 dB(A)	10 p.m. — 7 a.m.

In the event the alleged offensive noise consists entirely of impact noise, simple tone noise, speech, music, or any combination thereof, each of the above noise levels shall be reduced by 5 dB(A).

(b) It is unlawful for any person at any location within the city to create any noise, or to allow the creation of any noise on property owned, leased, occupied or otherwise controlled by such person, when the foregoing causes the noise level, when measured on any other residential property, either incorporated or unincorporated, to exceed:

- (1) The noise standard for a cumulative period of more than thirty minutes in any hour; or
- (2) The noise standard plus five dB(A) for a cumulative period of more than fifteen minutes in any hour; or
- (3) The noise standard plus ten dB(A) for a cumulative period of more than five minutes in any hour; or
- (4) The noise standard plus fifteen dB(A) for a cumulative period of more than one minute in any hour; or
- (5) The noise standard plus twenty dB(A) for any period of time.

(c) In the event the ambient noise level exceeds any of the first four noise limit categories set forth in subsection (b) of this section, the cumulative period applicable to said category shall be increased to reflect said ambient noise level. In the event the ambient noise level exceeds the fifth noise limit category, the maximum allowable noise level under said category shall be increased to reflect the maximum ambient noise level. (Ord. 806 § 2, 1976)

**6.28.060 Interior noise standards.**

(a) The following interior noise standards, unless otherwise specifically indicated, shall apply to all residential property within a designated noise zone:

### Interior Noise Standards

Noise Zone	Noise Level	Time Period
1	55 dB(A)	7 a.m. — 10 p.m.
	45 dB(A)	10 p.m. — 7 a.m.

In the event the alleged offensive noise consists entirely of impact noise, simple tone noise, speech, music, or any combination thereof, each of the above noise levels shall be reduced by five dB(A).

(b) It is unlawful for any person at any location within the city to create any noise, or to allow the creation of any noise on property owned, leased, occupied or otherwise controlled by such person, when the foregoing causes the noise level when measured within any other dwelling unit on any residential property, either incorporated or unincorporated, to exceed:

- (1) The interior noise standard for a cumulative period of more than five minutes in any hour; or
- (2) The interior noise standard plus five dB(A) for a cumulative period of more than one minute in any hour; or
- (3) The interior noise standard plus ten dB(A) for any period of time.

(c) In the event the ambient noise level exceeds either of the first two noise limit categories set forth in subsection (b) of this section, the cumulative period applicable to said category shall be increased to reflect said ambient noise level. In the event the ambient noise level exceeds the third noise limit category, the maximum allowable noise level under said category shall be increased to reflect the maximum ambient noise level. (Ord. 806 § 2, 1976)

#### 6.28.070 Special provisions.

The following activities shall be exempted from the provisions of this chapter:

- (1) Activities conducted on the grounds of any public or private nursery, elementary, intermediate or secondary school or college;
- (2) Public dances, provided said events are conducted pursuant to a permit issued by the city pursuant to Chapter [5.24](#) relative to the staging of said events;
- (3) Activities conducted on any park or playground, provided such park or playground is owned and operated by a public entity;
- (4) Any mechanical device, apparatus or equipment used, related to or connected with emergency machinery, vehicle or work;
- (5) Noise sources associated with the construction, repair, remodeling or grading of any real property, provided said activities take place between the hours of seven a.m. and eight p.m. Monday through Friday, nine a.m. through eight p.m. on Saturday and at no time on Sunday or any legal holiday. For purposes of this exception the use of saws, buffers, sanders, drills, and sprayers shall be included, as shall similar activity;
- (6) All mechanical devices, apparatus or equipment which are utilized for the protection or salvage of agricultural crops during periods of potential or actual frost damage or other adverse weather conditions;
- (7) Mobile noise sources associated with agricultural operations, provided such operations do not take place between the hours of eight p.m. and seven a.m. on weekdays, including Saturday, or at any time on Sunday or a legal holiday;
- (8) Mobile noise sources associated with agricultural pest control through pesticide application, provided that the application is made in accordance with the restricted material permits issued by or regulations enforced by the agricultural commissioner;
- (9) Noise sources associated with the landscape maintenance of real property, provided said activities take place between the hours of seven a.m. and eight p.m. Monday through Friday, nine a.m. through eight p.m. on Saturday, or nine a.m. through six p.m. on Sunday or legal holidays. For purposes of this exception, the phrase “landscape maintenance of real property” shall include, but not be limited to, the use of power mowers, edgers, chain saws, trimmers, hedgecutters,

and other devices that are not hand-powered. Leaf blowers shall not be included in said exception and shall be regulated as provided in Chapter [6.10](#) of this code;

(10) Any activity to the extent regulation thereof has been preempted by state or federal law. (Ord. 1282 § 1, 1998; Ord. 806 § 2, 1976)

---

#### **6.28.080 Schools, hospitals and churches—Special provisions.**

It is unlawful for any person to create any noise which causes the noise level at any school, hospital or church while the same is in use to exceed the noise limits as specified in Section [6.28.050](#) prescribed for the assigned noise zone in which the school, hospital or church is located, or which noise level unreasonably interferes with the use of such institutions or which unreasonably disturbs or annoys patients in the hospital, provided conspicuous signs are displayed in three separate locations within one-tenth of a mile of the institution indicating the presence of a school, church or hospital. (Ord. 806 § 2, 1976)

---

#### **6.28.090 Air conditioning and refrigeration—Special provisions.**

Until January 19, 1979, the noise standards enumerated in Sections [6.28.050](#) and [6.28.060](#) shall be increased eight dB(A) where the alleged offensive noise source is an air conditioning or refrigeration system or associated equipment which was installed prior to November 26, 1976. (Ord. 806 § 2, 1976)

---

#### **6.28.100 Noise level measurement.**

The location selected for measuring exterior noise levels shall be at any point on the affected property. Interior noise measurements shall be made within the affected dwelling unit. The measurement shall be made at a point at least four feet from the wall, ceiling, or floor nearest the alleged offensive noise source and may be made with the windows of the affected unit open. (Ord. 806 § 2, 1976)

---

#### **6.28.110 Manner of enforcement.**

The county health officer and his duly authorized representatives are directed to enforce the provisions of this chapter. The county health officer and his duly authorized representatives are authorized, pursuant to [Penal Code](#) Section 836.5, to arrest any person without a warrant when they have reasonable cause to believe that such person has committed a misdemeanor in their presence.

No person shall interfere with, oppose or resist any authorized person charged with enforcement of this chapter while such person is engaged in the performance of his duty. (Ord. 806 § 2, 1976)

---

#### **6.28.120 Variance procedure.**

The owner or operator of a noise source which violates any of the provisions of this chapter may file an application with the health officer for a variance from the provisions thereof wherein said owner or operator shall set forth all actions taken to comply with said provisions, the reasons why immediate compliance cannot be achieved, a proposed method of achieving compliance, and a proposed time schedule for its accomplishment. Said application shall be accompanied by a fee in the amount of seventy-five dollars. A separate application shall be filed for each noise source; provided, however, that several mobile sources under common ownership, or several fixed sources on a single property may be combined into one application. Upon receipt of said application and fee, the health officer shall refer it with his recommendation thereon within thirty days to the noise variance board of the county for action thereon in accordance with the provisions of this chapter.

An applicant for a variance shall remain subject to prosecution under the terms of this chapter until a variance is granted. (Ord. 806 § 2, 1976)

---

#### **6.28.130 Noise variance board.**

The noise variance board shall evaluate all applications for variance from the requirements of this chapter and may grant said variances with respect to time for compliance, subject to such terms, conditions and requirements as it may deem reasonable to achieve maximum compliance with the provisions of this chapter. Said terms, conditions and requirements may include, but shall not be limited to, limitation on noise levels and operating hours. Each such variance shall set forth in detail the approved method of achieving maximum compliance and a time schedule for its accomplishment. In its determinations said board shall consider the magnitude of nuisance caused by the offensive noise, the uses of property within the area of impingement by the noise, the time factors related to study, design, financing and construction of remedial work, the economic factors related to age and useful life of equipment, and the general public interest and welfare. Any variance granted by said board shall be by resolution and shall be transmitted to the health officer for enforcement. Any violation of the terms of said variance shall be unlawful. (Ord. 806 § 2, 1976)

#### **6.28.140 Appeals.**

---

(a) Within fifteen days following the decision of the variance board on an application the applicant, the health officer, or any member of the city council may appeal the decision to the city council by filing a notice of appeal with the secretary of the variance board. In the case of an appeal by the applicant for a variance, the notice of appeal shall be accompanied by a fee to be computed by the secretary on the basis of the estimated cost of preparing the materials required to be forwarded to the city council as discussed hereafter. If the actual cost of such preparation differs from the estimated cost appropriate payments shall be made either to or by the secretary.

(b) Within fifteen days following receipt of a notice of appeal and the appeal fee, the secretary of the variance board shall forward to the city council copies of the application for variance, the recommendation of the health officer, the notice of appeal, all evidence concerning said application received by the variance board and its decision thereon. In addition, any person may file with the city council written arguments supporting or attacking said decision and the city council may in its discretion hear oral arguments thereon. The city clerk shall mail to the applicant a notice of the date set for hearing of the appeal. The notice shall be mailed at least ten days prior to the hearing date.

(c) Within sixty days following its receipt of the notice of the appeal, the city council shall either affirm, modify or reverse the decision of the variance board. Such decision shall be based upon the city council's evaluation of the matters submitted to the city council in light of the powers conferred on the variance board and the factors to be considered, both as enumerated in Sections [6.28.120](#) and [6.28.130](#).

(d) As part of its decision the council may direct the variance board to conduct further proceedings on said application. Failure of the city council to affirm, modify or reverse the decision of the variance board within said sixty-day period shall constitute an affirmation of the decision. (Ord. 806 § 2, 1976)

#### **6.28.145 Alternative noise prohibition.**

---

Notwithstanding any other provisions of this chapter and in addition thereto, it is unlawful for any person to wilfully make, continue, maintain, permit, or cause to be made, continued, maintained, or permitted, any loud, unnecessary and unusual noise which disturbs the peace or quiet of any residential neighborhood or which causes discomfort or annoyance to any reasonable person of normal sensitivity residing in the area. It shall be a prima facie violation of this section if any radio, receiving set, television, musical instrument or similar device is played, used or permitted to be played or used between the hours of nine p.m. and seven a.m. when audible from a distance of fifty feet from the property line of the noise source or from a distance of one hundred feet from any nonstationary noise source. The determination may be made by a peace officer or may be proven by the testimony of any other person. (Ord. 1018 § 1, 1985)

#### **6.28.147 Idling motor vehicles.**

---

No person shall leave standing any motor vehicle, including refrigeration trailers, with engine idling or auxiliary motor running for in excess of ten minutes between the hours of ten p.m. and seven a.m. if the engine or motor noise disturbs the peace or quiet of any residential neighborhood or causes discomfort or annoyance to any reasonable person of normal sensitivity residing in the area. The driver, owner, registered owner and legal owner of the motor vehicle or refrigeration trailer shall each be guilty of the offense described herein. (Ord. 1156 § 1, 1990)

---

**6.28.148 Commercial delivery prohibition.**

---

No person shall make, cause, accept or permit a delivery of goods, merchandise, material, equipment, meat, poultry, fish, groceries, dairy products, foodstuffs, food, or beverage within one hundred feet of a residentially zoned property between the hours of ten p.m. and seven a.m. or at any time on a Sunday or legal holiday so as to disturb the peace and quiet of any reasonable person of normal sensitivity residing in the area. Proof of such a violation may be established by the testimony of a peace officer, code enforcement officer, or any other person. For purposes of this section “delivery” shall not only mean the completed act of a delivery, but all preparatory and related steps taken within the one hundred-foot distance including, but not limited to, driving, stopping, idling or parking a vehicle, the opening or shutting of doors, or the movement of pallets, dollies, floor jacks, or lifts. (Ord. 1173 § 1, 1992)

---

**6.28.149 Parking lot sweepers.**

---

No person shall operate a parking lot sweeper or similar device for cleaning or maintaining commercial property within one hundred feet of a residential area except during the hours of eight a.m. and six p.m., Monday through Friday, between nine a.m. and six p.m. on Saturday, and at no time on Sunday. (Ord. 1324 § 1, 2002)

---

**6.28.150 Violation—Penalty.**

---

Any person violating any of the provisions of this chapter shall be deemed guilty of a misdemeanor. Each day such violation is committed or permitted to continue shall constitute a separate offense and shall be punishable as such. The provisions of this chapter shall not be construed as permitting conduct not prescribed herein and shall not affect the enforceability of any other applicable provisions of law. (Ord. 806 § 2, 1976)

---

View the [mobile version](#).