

Merced Union High School District
REQUEST FOR PRELIMINARY COMMENT
El Capitan High School Stadium Project

To:

Responsible, Trustee and Interested Agencies
Interested Persons

From:

Merced Union High School District
Melissa Miller, Facilities Planning Manager
2130 Spacecraft Drive
Atwater, CA 95301
Telephone: (209) 325-2245
Email: mmiller@muhsd.org

Date: December 1, 2022

Purpose: The Merced Union High School District (District) is proposing to undertake the El Capitan High School Stadium Project (project). The purpose of this Request for Preliminary Comment is to invite responsible, trustee, and interested agencies, as well as interested persons, to submit written comments on any concerns they may have on the environmental effects of the project. The District will consider the comments in preparing a California Environmental Quality Act Initial Study for the project and in determining whether to prepare an Environmental Impact Report for the project or to adopt a Negative Declaration or Mitigated Negative Declaration. You will have the opportunity to comment again after you have reviewed the completed environmental documents.

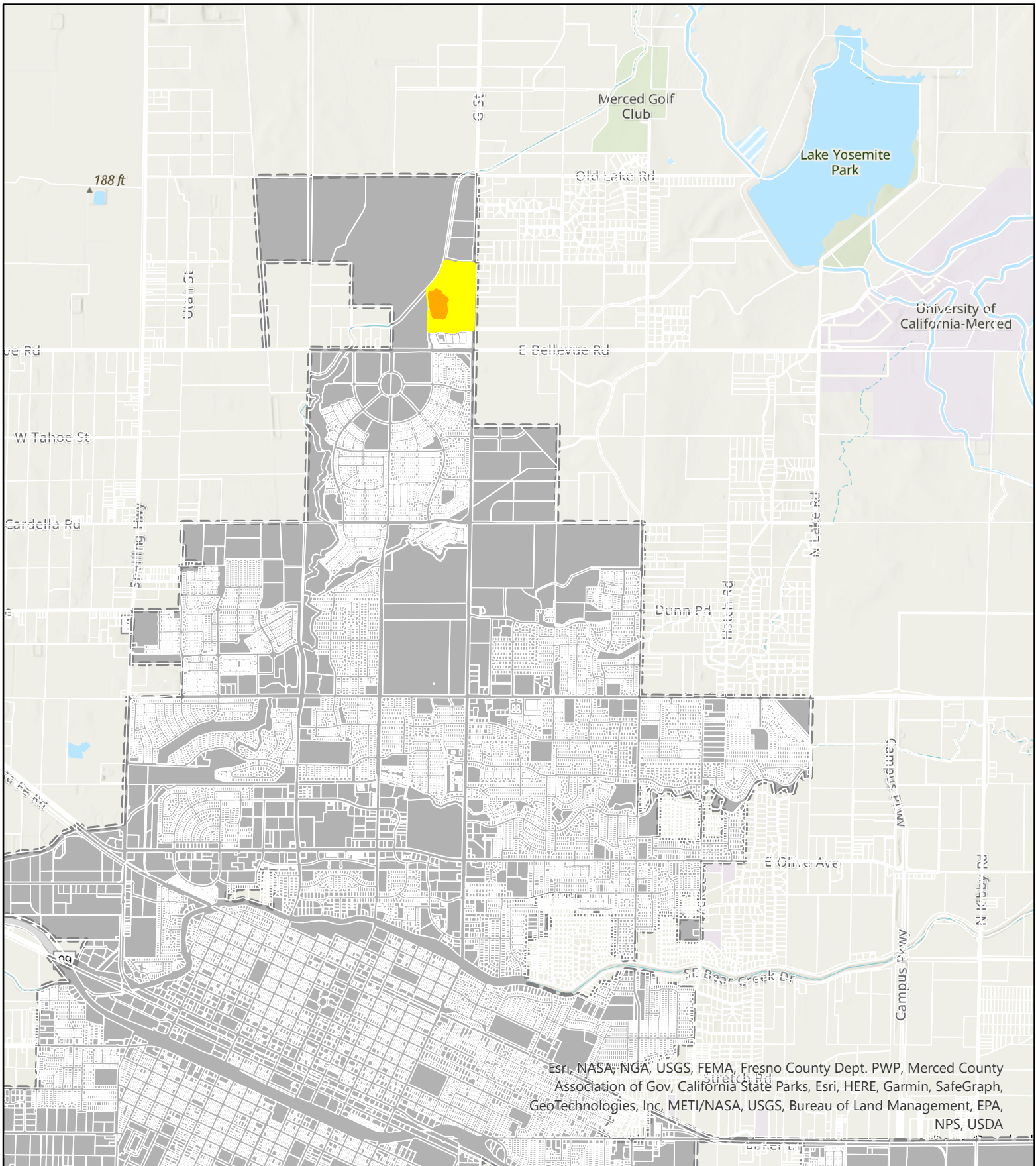
Comments: Please send any comments in response to this Request for Preliminary Comment to Melissa Miller at the contact information provided above. **The deadline for submission of comments is Wednesday, December 21, 2022.**

Project Location and Description: The project will be located on the western portion of the existing El Capitan High School campus, addressed at 100 Farmland Ave in the City of Merced, California. The project site is currently occupied by existing campus athletic facilities (a football field and running track). The area surrounding the project site consists of other existing school facilities at the El Capitan campus, vacant land, agricultural land, Fahrens Creek, and single-family residential development. The project would not result in an expansion of the existing campus boundaries. (See Figures 1 and 2 for a map of the project's regional location and an aerial view of the project site boundaries and vicinity.)

The project includes construction and operation of a 3,000-seat athletic stadium which would serve El Capitan High School's athletic programs. Facilities planned as part of the project include bleacher seating, a natural turf competition field, a rubberized running track, a scoreboard, PA system, concessions, and restrooms (see Figure 3, Site Plan). The stadium would be lighted using state-of-the-art LED light fixtures mounted on four 90-foot-tall poles. The lighting would be designed and oriented to light the field and project areas adjacent to the field that need to be lighted with little or no light trespass on non-project areas. Additionally, the project includes landscaping features and new concrete-paved areas within the campus.

The project would operate year-round, with most activity occurring during the fall sports season. Games and practices would be scheduled on weekdays and weekends, and events would be scheduled during daytime and evening hours (not to exceed 10:00 p.m.). The project may also be utilized for hosting occasional non-athletic special events, such as pep rallies and graduation ceremonies.

If approved, the project is anticipated to begin construction in September 2023 and begin operation in September 2024.



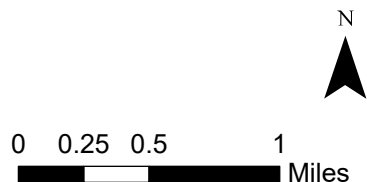
Project Location

Figure 1

El Capitan High School Stadium Project
 Merced Union High School District

ODELL Planning & Research, Inc.
 Environmental Planning • School Facility Planning • Demographics

- El Capitan High School
- Project Site
- Merced City Limits





Esri Community Maps Contributors, Fresno County Dept. PWP, Merced County Association of Gov, California State Parks, © OpenStreetMap, Microsoft, Esri, HERE, Garmin, SafeGraph, GeoTechnologies, Inc, METI/NASA, USGS, Bureau of Land Management, EPA, NPS, US Census Bureau, USDA, Maxar

Project Site

El Capitan High School Stadium Project
 Merced Union High School District

ODELL Planning & Research, Inc.
 Environmental Planning • School Facility Planning • Demographics

- El Capitan High School
- Project Site

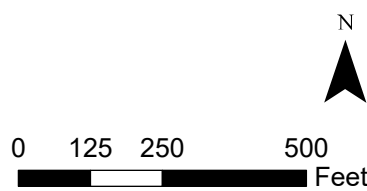


Figure 2



CONCESSIONS + TOILET + TICKET BUILDING

SECOND TOILET BUILDING + SNACK BAR

Figure 3