

APPENDIX 6

**CULTURAL RESOURCES STUDY FOR THE
HARIKRISHNA RETAIL/COMMERCIAL
CENTER PROJECT**

**CITY OF HIGHLAND,
SAN BERNARDINO COUNTY, CALIFORNIA**


**APNs 1201-311-02 to -05 and
1201-301-14, -15, and -19**

Lead Agency:

**City of Highland
27215 Base Line Street
Highland, California 92401**

Preparer:

**BFSA Environmental Services,
a Perennial Company
14010 Poway Road, Suite A
Poway, California 92064**


Signature

Project Proponent:

**Empire Design Group, Inc.
511 North Main Street
Lake Elsinore, California 92530**

December 1, 2022

Archaeological Database Information

Author: Andrew J. Garrison, M.A., RPA

Consulting Firm: BFSA Environmental Services, a Perennial Company
14010 Poway Road, Suite A
Poway, California 92064
(858) 679-8218

Client/Project Proponent: Empire Design Group, Inc.
511 North Main Street
Lake Elsinore, California 92530

Report Date: December 1, 2022

Report Title: Cultural Resources Study for the Harikrishna Retail/Commercial Center Project, City of Highland, San Bernardino County, California

Type of Study: Phase I Cultural Resources Survey

USGS Quadrangle: Section 4, Township 1 South, Range 3 West, of the *San Redlands, California* (7.5-minute) USGS Quadrangle

Acreage: 1.89 acres

Key Words: Survey; no cultural resources identified; *Redlands* USGS Quadrangle; archaeological monitoring of grading not recommended.

Table of Contents

<u>Section</u>	<u>Description</u>	<u>Page</u>
	MANAGEMENT SUMMARY/ABSTRACT	iv
1.0	INTRODUCTION	1.0-1
	1.1 Project Description.....	1.0-1
	1.2 Environmental Setting	1.0-1
	1.3 Cultural Setting	1.0-5
	1.3.1 Prehistoric Period.....	1.0-5
	1.3.2 Historic Period.....	1.0-10
	1.4 Results of the Archaeological Records Search	1.0-15
	1.5 Applicable Regulations.....	1.0-17
	1.5.1 California Environmental Quality Act.....	1.0-17
2.0	RESEARCH DESIGN	2.0-1
3.0	ANALYSIS OF PROJECT EFFECTS	3.0-1
	3.1 Survey Methods	3.0-1
	3.2 Results of the Field Survey	3.0-1
4.0	RECOMMENDATIONS.....	4.0-1
5.0	LIST OF PREPARERS AND ORGANIZATIONS CONTACTED	5.0-1
6.0	REFERENCES CITED.....	6.0-1

List of Appendices

Appendix A – Resumes of Key Personnel

Appendix B – Archaeological Records Search Results*

Appendix C – NAHC Sacred Lands File Search*

**Deleted for public review and bound separately in the Confidential Appendix*

List of Figures

<u>Figure</u>	<u>Description</u>	<u>Page</u>
Figure 1.1-1	General Location Map.....	1.0-2
Figure 1.1-2	Project Location Map (USGS)	1.0-3
Figure 1.1-3	Site Plan.....	1.0-4

List of Plates

<u>Plate</u>	<u>Description</u>	<u>Page</u>
Plate 3.2–1	Overview of the project, facing southeast.....	3.0–2
Plate 3.2–2	Overview of the project, facing northwest.....	3.0–2
Plate 3.2–3	Overview of the project and fenced yard, facing southwest.....	3.0–3
Plate 3.2–4	Overview of the fenced yard in the northeast portion of the project, facing northwest	3.0–3

List of Tables

<u>Table</u>	<u>Description</u>	<u>Page</u>
Table 1.4–1	Cultural Resources Located Within One Mile of the Harikrishna Retail/ Commercial Center Project.....	1.0–15

MANAGEMENT SUMMARY/ABSTRACT

At the direction of Empire Design Group, Inc., a cultural resources study was conducted by BFSA Environmental Services, a Perennial Company (BFSA) for the proposed Harikrishna Retail/Commercial Center Project. The project consists of a proposal to develop a gas station and convenience store along with associated parking and infrastructure within 1.89-acre property. The project is identified as Assessor's Parcel Numbers (APNs) 1201-311-02 to -05 and 1201-301-14, -15, and -19) and is located at the northeast corner of Palm Avenue and West 5th Street in the city of Highland, San Bernardino County, California. The project is situated within Section 4, Township 1 South, Range 3 West in the U.S. Geological Survey (USGS) *Redlands, California* Quadrangle.

The purpose of this investigation was to locate and record any cultural resources within the project and subsequently evaluate any resources as part of the City of Highland environmental review process conducted in compliance with the California Environmental Quality Act (CEQA). The archaeological investigation of the project includes an archaeological records search conducted at the South Central Coastal Information Center (SCCIC) at California State University, Fullerton (CSU Fullerton) in order to assess previous archaeological studies and identify any previously recorded archaeological sites within the project or in the immediate vicinity. The records search identified eight previously recorded resources (one prehistoric and seven historic) within one mile of the project; however, no resources are recorded within the subject property. A Sacred Lands File (SLF) search was also requested from the Native American Heritage Commission (NAHC).

Survey conditions were generally good. The property has been previously cleared and appears to have been graded, which provided an excellent unobstructed view of the ground surface. According to aerial photographs, the project has been vacant since at least the late 1930s. The Phase I survey of the Harikrishna Retail/Commercial Center Project did not result in the identification of any cultural resources within the project.

Based upon the results of the field survey and aerial photographs, no prehistoric or historic sites are present within the boundaries of the current project. The proposed project will not impact any cultural resources, and, consequently, mitigation measures will not be required as a condition of approval for this project. A copy of this report will be permanently filed with the SCCIC at CSU Fullerton. All notes, photographs, and other materials related to this project will be curated at the archaeological laboratory of BFSA in Poway, California.

1.0 INTRODUCTION

1.1 Project Description

The archaeological survey program for the Harikrishna Retail/Commercial Center Project was conducted in order to comply with CEQA and City of Highland environmental compliance procedures. The 1.89-acre project is located at the northeast corner of Palm Avenue and West 5th Street in the city of Highland, San Bernardino County, California (APNs 1201-311-02 to -05 and 1201-301-14, -15, and -19) (Figure 1.1–1). The project is situated within Section 4, Township 1 South, Range 3 West in the USGS *Redlands, California* Quadrangle (Figure 1.1–2). The project proposes the construction of gas station, convenience store, and associated parking and infrastructure (Figure 1.1–3). The decision to request this investigation was based upon cultural resource sensitivity of the locality as suggested by known site density and predictive modeling. Sensitivity for cultural resources in a given area is usually indicated by known settlement patterns, which in southwestern San Bernardino County were focused around freshwater resources and a food supply.

1.2 Environmental Setting

The Harikrishna Retail/Commercial Center Project is located in the Peninsular Ranges Geologic Province of southern California. The range, which lies in a northwest to southeast trend through the county, extends some 1,000 miles from the Raymond-Malibu Fault Zone in western Los Angeles County to the southern tip of Baja California. The subject property is located within the broad, fault-bounded alluvial valley of the Santa Ana Wash between the San Bernardino Mountains to the north and the San Timoteo Badlands to the south (Morton and Miller 2006). The project is just south of the City Creek flood control channel, a tributary to the Santa Ana River. Stratigraphically, the project overlies late Holocene-aged young axial-valley deposits, Unit 4, which are characterized as fine to coarse-grained sands and pebbly sands that coarsen eastward. Active wash deposits of unconsolidated sand and gravel characterize the historic path of City Creek (Wirths 2022). Soils within the project consist of Tujunga gravelly loamy sand, 0 to 9 percent slopes (TvC) (NRCS 2022). The property is relatively flat with an average elevation of approximately 1,190 feet above mean sea level.

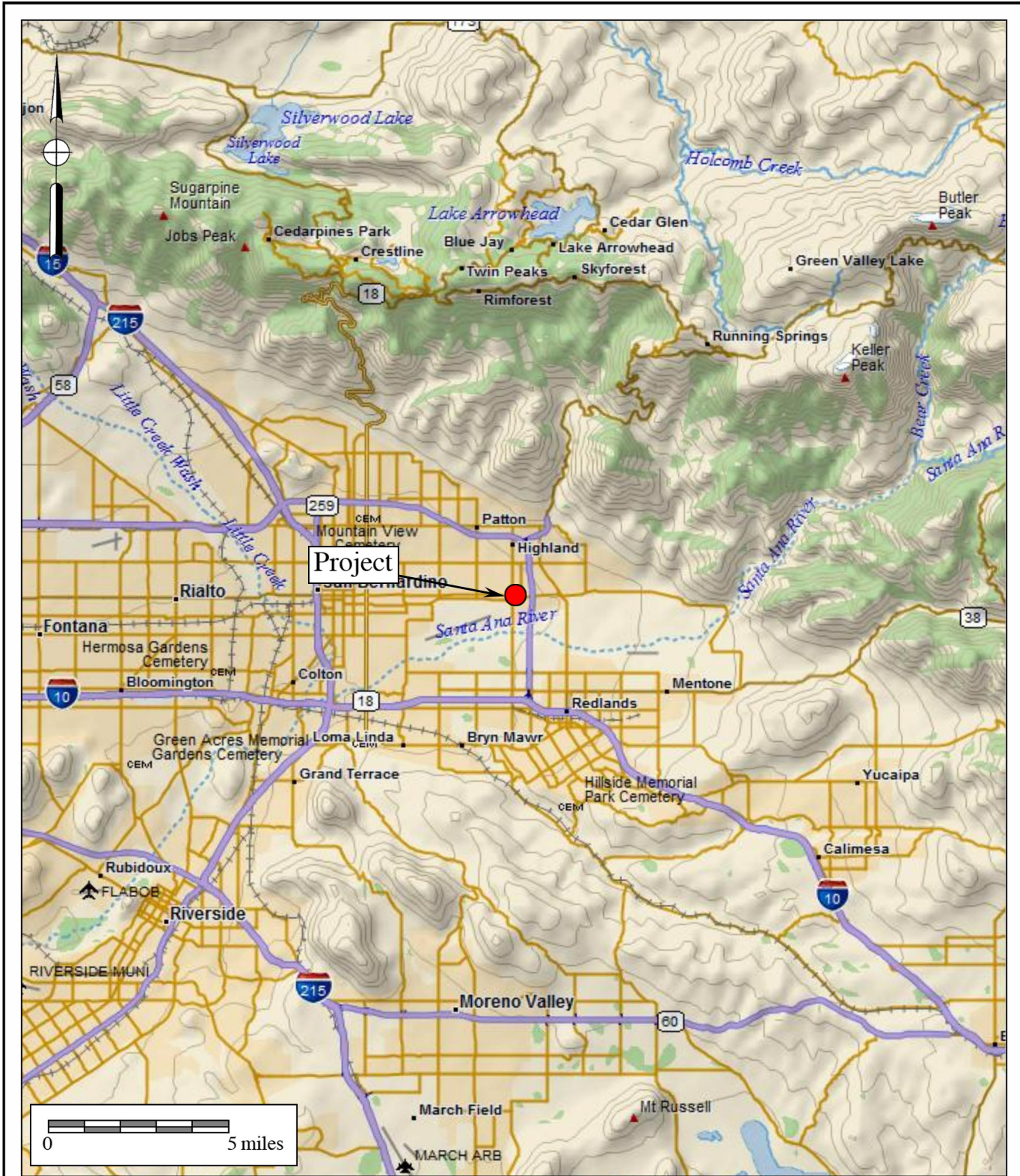


Figure 1.1-1
General Location Map

The Harikrishna Retail/Commercial Center Project
 DeLorme (1:250,000 series)



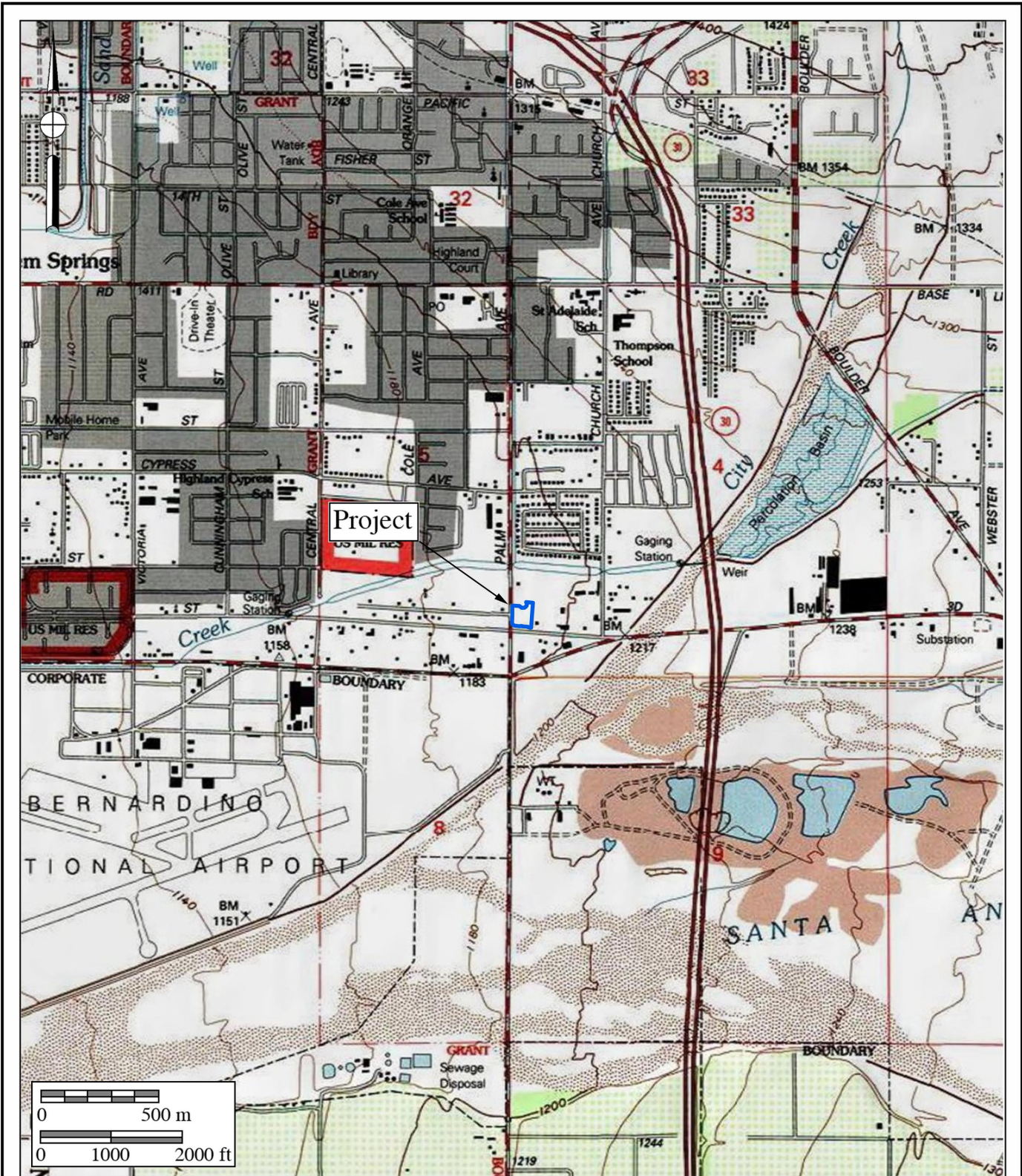


Figure 1.1–2
Project Location Map

The Harikrishna Retail/Commercial Center Project
 USGS Redlands Quadrangle (7.5-minute series)



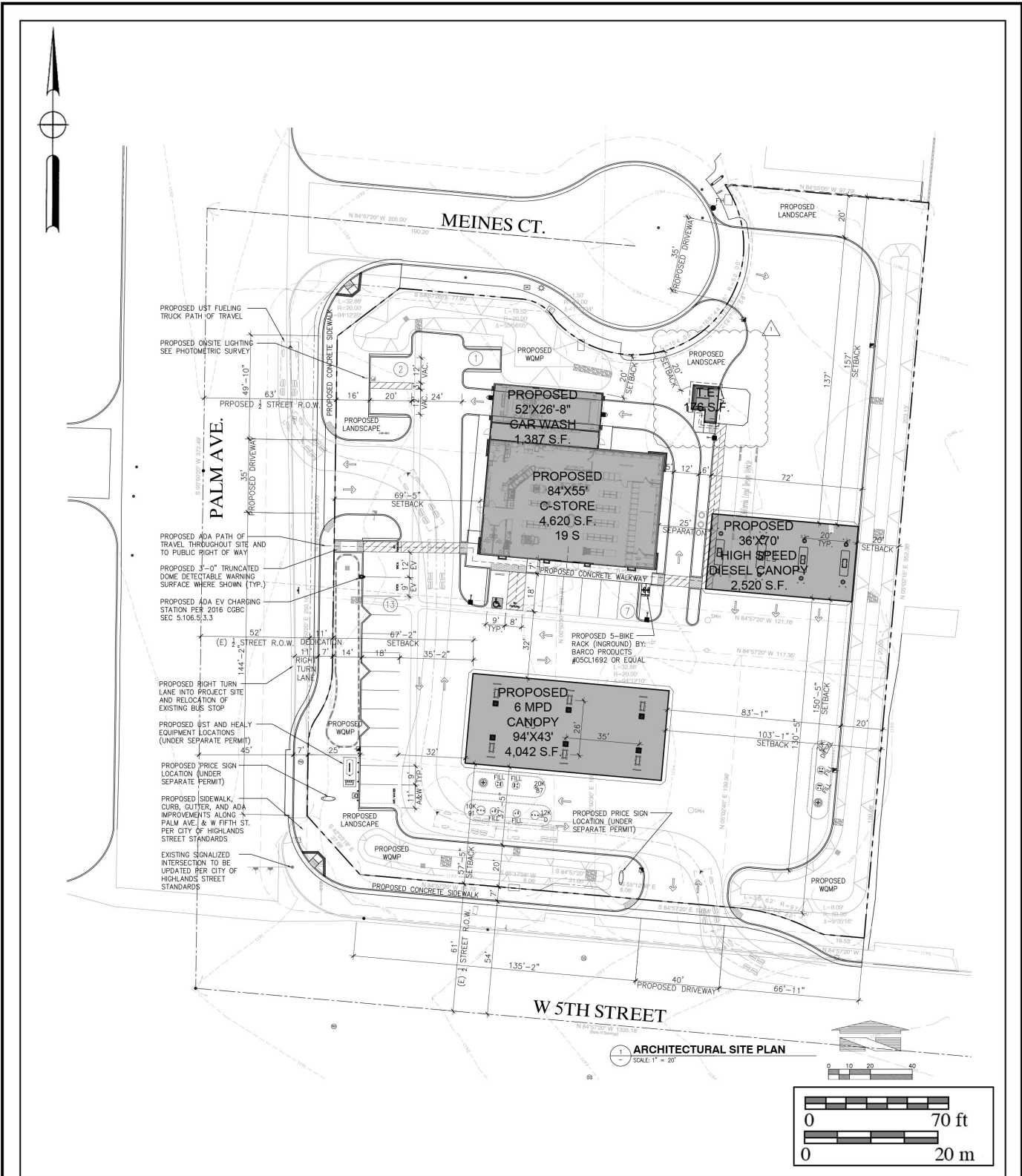


Figure 1.1-3
Site Plan

The Harikrishna Retail/Commercial Center Project



1.3 Cultural Setting

1.3.1 Prehistoric Period

Paleo Indian, Archaic Period Milling Stone Horizon, and the Late Prehistoric Shoshonean groups are the three general cultural periods represented in San Bernardino County. The following discussion of the cultural history of San Bernardino County references the San Dieguito Complex, the Encinitas Tradition, the Milling Stone Horizon, the La Jolla Complex, the Pauma Complex, and the San Luis Rey Complex, since these culture sequences have been used to describe archaeological manifestations in the region. The Late Prehistoric component in the southwestern area of San Bernardino County was represented by the Gabrielino and Serrano Indians. According to Kroeber (1976), the Serrano probably owned a stretch of the Sierra Madre from Cucamonga east to above Mentone and halfway up to San Timoteo Canyon, including the San Bernardino Valley and just missing Riverside County. However, Kroeber (1976) also states that this area has been assigned to the Gabrielino, “which would be a more natural division of topography, since it would leave the Serrano pure mountaineers.”

Absolute chronological information, where possible, will be incorporated into this discussion to examine the effectiveness of continuing to use these terms interchangeably. Reference will be made to the geologic framework that divides the culture chronology of the area into four segments: late Pleistocene (20,000 to 10,000 years before the present [YBP]), early Holocene (10,000 to 6,650 YBP), middle Holocene (6,650 to 3,350 YBP), and late Holocene (3,350 to 200 YBP).

Paleo Indian Period (Late Pleistocene: 11,500 to circa 9,000 YBP)

The Paleo Indian Period is associated with the terminus of the late Pleistocene (12,000 to 10,000 YBP). The environment during the late Pleistocene was cool and moist, which allowed for glaciation in the mountains and the formation of deep, pluvial lakes in the deserts and basin lands (Moratto 1984). However, by the terminus of the late Pleistocene, the climate became warmer, which caused glaciers to melt, sea levels to rise, greater coastal erosion, large lakes to recede and evaporate, extinction of Pleistocene megafauna, and major vegetation changes (Moratto 1984; Martin 1967, 1973; Fagan 1991). The coastal shoreline at 10,000 YBP, depending upon the particular area of the coast, was near the 30-meter isobath, or two to six kilometers further west than its present location (Masters 1983).

Paleo Indians were likely attracted to multiple habitat types, including mountains, marshlands, estuaries, and lakeshores. These people likely subsisted using a more generalized hunting, gathering, and collecting adaptation, utilizing a variety of resources including birds, mollusks, and both large and small mammals (Erlandson and Colten 1991; Moratto 1984; Moss and Erlandson 1995).

Archaic Period (Early and Middle Holocene: circa 9,000 to 1,300 YBP)

The Archaic Period of prehistory began with the onset of the Holocene around 9,000 YBP.

The transition from the Pleistocene to the Holocene was a period of major environmental change throughout North America (Antevs 1953; Van Devender and Spaulding 1979). The general warming trend caused sea levels to rise, lakes to evaporate, and drainage patterns to change. In southern California, the general climate at the beginning of the early Holocene was marked by cool/moist periods and an increase in warm/dry periods and sea levels. The coastal shoreline at 8,000 YBP, depending upon the particular area of the coast, was near the 20-meter isobath, or one to four kilometers further west than its present location (Masters 1983).

The rising sea level during the early Holocene created rocky shorelines and bays along the coast by flooding valley floors and eroding the coastline (Curry 1965; Inman 1983). Shorelines were primarily rocky with small littoral cells, as sediments were deposited at bay edges but rarely discharged into the ocean (Reddy 2000). These bays eventually evolved into lagoons and estuaries, which provided a rich habitat for mollusks and fish. The warming trend and rising sea levels generally continued until the late Holocene (4,000 to 3,500 YBP).

At the beginning of the late Holocene, sea levels stabilized, rocky shores declined, lagoons filled with sediment, and sandy beaches became established (Gallegos 1985; Inman 1983; Masters 1994; Miller 1966; Warren and Pavesic 1963). Many former lagoons became saltwater marshes surrounded by coastal sage scrub by the late Holocene (Gallegos 2002). The sedimentation of the lagoons was significant in that it had profound effects upon the types of resources available to prehistoric peoples. Habitat was lost for certain large mollusks, namely *Chione* and *Argopecten*, but habitat was gained for other small mollusks, particularly *Donax* (Gallegos 1985; Reddy 2000). The changing lagoon habitats resulted in the decline of larger shellfish, the loss of drinking water, and the loss of Torrey Pine nuts, causing a major depopulation of the coast as people shifted inland to reliable freshwater sources and intensified their exploitation of terrestrial small game and plants, including acorns (originally proposed by Rogers 1929; Gallegos 2002).

The Archaic Period in southern California is associated with a number of different cultures, complexes, traditions, and horizons, including San Dieguito, La Jolla, Encinitas, Milling Stone, and Pauma, as well as the Intermediate Period.

Late Prehistoric Period (Late Holocene: 1,300 YBP to 1790)

Approximately 1,350 YBP, a Shoshonean-speaking group from the Great Basin region moved into San Bernardino County, marking the transition to the Late Prehistoric Period. This period has been characterized by higher population densities and elaborations in social, political, and technological systems. Economic systems diversified and intensified during this period, with the continued elaboration of trade networks, the use of shell-bead currency, and the appearance of more labor-intensive, yet effective, technological innovations. Technological developments during this period included the introduction of the bow and arrow between A.D. 400 and 600 and the introduction of ceramics. Atlatl darts were replaced by smaller arrow darts, including the Cottonwood series points. Other hallmarks of the Late Prehistoric Period include extensive trade networks as far reaching as the Colorado River Basin and cremation of the dead.

Protohistoric Period (Late Holocene: 1790 to Present)

Gabrielino

At the time of Spanish contact, the territory of the Gabrielino, also known ethnographically as the Tongva, covered much of present-day Los Angeles and Orange counties. The southern extent of this culture area is bounded by Aliso Creek, the eastern extent is located east of present-day San Bernardino along the Santa Ana River, the northern extent includes the San Fernando Valley, and the western extent includes portions of the Santa Monica Mountains. The Gabrielino also occupied several Channel Islands including Santa Barbara Island, Santa Catalina Island, San Nicholas Island, and San Clemente Island. Because of their access to certain resources, including a steatite source from Santa Catalina Island, this group was among the wealthiest and most populous aboriginal groups in all of southern California. Trade of materials and resources controlled by the Gabrielino extended as far north as the San Joaquin Valley, as far east as the Colorado River, and as far south as Baja California (Bean and Smith 1978a; Kroeber 1976).

The Gabrielino lived in permanent villages and smaller resource gathering camps occupied at various times of the year depending upon the seasonality of the resource. Larger villages were comprised of several families or clans, while smaller, seasonal camps typically housed smaller family units. The coastal area between San Pedro and Topanga Canyon was the location of primary subsistence villages, while secondary sites were located near inland sage stands, oak groves, and pine forests. Permanent villages were located along rivers and streams, as well as in sheltered areas along the coast. As previously mentioned, the Channel Islands were also the locations of relatively large settlements (Bean and Smith 1978a; Kroeber 1976).

Resources procured along the coast and on the islands were primarily marine in nature and included tuna, swordfish, ray and shark, California sea lion, Stellar sea lion, harbor seal, northern elephant seal, sea otter, dolphin and porpoise, various waterfowl species, numerous fish species, purple sea urchin, and mollusks such as rock scallop, California mussel, and limpet. Inland resources included oak acorn, pine nut, Mohave yucca, cacti, sage, grass nut, deer, rabbit, hare, rodent, quail, duck, and a variety of reptiles such as western pond turtle and several different species of snakes (Bean and Smith 1978a; Kroeber 1976).

The social structure of the Gabrielino is little known; however, there appears to have been at least three social classes: 1) the elite, which included the rich, chiefs, and their immediate family; 2) a middle class, which included people of relatively high economic status or long-established lineages; and 3) a class of people that included most other individuals in the society. Villages were politically autonomous units comprised of several lineages. During times of the year when certain seasonal resources were available, the village would divide into lineage groups and move out to exploit them, returning to the village between forays (Bean and Smith 1978a; Kroeber 1976).

Each lineage had its own leader, with the village chief coming from the dominant lineage. Several villages might be allied under a paramount chief. Chiefly positions were of an ascribed status, most often passed to the eldest son. Chiefly duties included providing village cohesion, leading warfare and peace negotiations with other groups, collecting village tributes, and

arbitrating disputes within the village(s). The status of the chief was legitimized by safekeeping of the sacred bundle, a representation of the link between the material and spiritual realms and the embodiment of power (Bean and Smith 1978a; Kroeber 1976).

Shamans were leaders in the spirit realm. The duties of the shaman included conducting healing and curing ceremonies, guarding the sacred bundle, locating lost items, identifying and collecting poisons for arrows, and making rain (Bean and Smith 1978a; Kroeber 1976).

Marriages were made between individuals of equal social status and, in the case of powerful lineages, marriages were arranged to establish political ties between the lineages (Bean and Smith 1978a; Kroeber 1976).

Men conducted the majority of the heavy labor, hunting, fishing, and trading with other groups. Women's duties included gathering and preparing plant and animal resources, and making baskets, pots, and clothing (Bean and Smith 1978a; Kroeber 1976).

Gabrielino houses were domed, circular structures made of thatched vegetation. Houses varied in size and could house from one to several families. Sweathouses (semicircular, earth-covered buildings) were public structures used in male social ceremonies. Other structures included menstrual huts and a yuvar, an open-air, ceremonial structure built near the chief's house (Bean and Smith 1978a; Kroeber 1976).

Clothing was minimal; men and children most often went naked, while women wore deerskin or bark aprons. In cold weather, deerskin, rabbit fur, or bird skin (with feathers intact) cloaks were worn. Island and coastal groups used sea otter fur for cloaks. In areas of rough terrain, yucca fiber sandals were worn. Women often used red ochre on their faces and skin for adornment or protection from the sun. Adornment items included feathers, fur, shells, and beads (Bean and Smith 1978a; Kroeber 1976).

Hunting implements included wood clubs, sinew-backed bows, slings, and throwing clubs. Maritime implements included rafts, harpoons, spears, hook and line, and nets. A variety of other tools included deer scapulae saws, bone and shell needles, bone awls, scrapers, bone or shell flakers, wedges, stone knives and drills, metates, mullers, manos, shell spoons, bark platters, and wooden paddles and bowls. Baskets were made from rush, deer grass, and skunkbush. Baskets were fashioned for hoppers, plates, trays, and winnowers for leaching, straining, and gathering. Baskets were also used for storing, preparing, and serving food, and for keeping personal and ceremonial items (Bean and Smith 1978a; Kroeber 1976).

The Gabrielino had exclusive access to soapstone, or steatite, procured from Santa Catalina Island quarries. This highly prized material was used for making pipes, animal carvings, ritual objects, ornaments, and cooking utensils. The Gabrielino profited well from trading steatite since it was valued so much by groups throughout southern California (Bean and Smith 1978a; Kroeber 1976).

Serrano

Aboriginally, the Serrano occupied an area east of present-day Los Angeles. According to

Bean and Smith (1978b), definitive boundaries are difficult to place for the Serrano due to their sociopolitical organization and a lack of reliable data:

The Serrano were organized into autonomous localized lineages occupying definite, favored territories, but rarely claiming any territory far removed from the lineage's home base. Since the entire dialectical group was neither politically united nor amalgamated into supralineage groups, as many of their neighbors were, one must speak in terms of generalized areas of usage rather than pan-tribal holdings. (Strong [1971] in Bean and Smith 1978b)

However, researchers place the Serrano in the San Bernardino Mountains east of Cajon Pass and at the base of and north of the mountains near Victorville, east to Twentynine Palms, and south to the Yucaipa Valley (Bean and Smith 1978b). Serrano has been used broadly for languages in the Takic family including Serrano, Kitanemuk, Vanyume, and Tataviam.

The Serrano were part of “exogamous clans, which in turn were affiliated with one of two exogamous moieties, *tuk^wutam* (Wildcat) and *wahi?iam* (Coyote)” (Bean and Smith 1978b). According to Strong (1971), details such as number, structure, and function of the clans are unknown. Instead, he states that clans were not political, but were rather structured based upon “economic, marital, or ceremonial reciprocity, a pattern common throughout Southern California” (Bean and Smith 1978b). The Serrano formed alliances amongst their own clans and with Cahuilla, Chemehuevi, Gabrielino, and Cupeño clans (Bean and Smith 1978b). Clans were large, autonomous political and landholding units formed patrilineally, with all males descending from a common male ancestor, including all wives and descendants of the males. However, even after marriage, women would still keep their original lineage, and would still participate in those ceremonies (Bean and Smith 1978b).

According to Bean and Smith (1978b), the cosmogony and cosmography of the Serrano are very similar to those of the Cahuilla:

There are twin creator gods, a creation myth told in “epic poem” style, each local group having its own origin story, water babies whose crying foretells death, supernatural beings of various kinds and on various hierarchically arranged power-access levels, an Orpheus-like myth, mythical deer that no one can kill, and tales relating the adventures (and misadventures) of Coyote, a tragicomic trickster-transformer culture hero. (Bean [1962-1972] and Benedict [1924] in Bean and Smith 1978b)

The Serrano had a shaman who acquired powers through dreams, which were induced through ingestion of the hallucinogen datura. The shaman was mostly a curer/healer, using herbal remedies and “sucking out the disease-causing agents” (Bean and Smith 1978b).

Serrano village locations were typically located near water sources. Individual family dwellings were likely circular, domed structures. Daily household activities would either take place outside of the house out in the open, or under a ramada constructed of a thatched willow pole roof held up by four or more poles inserted into the ground. Families could consist of a husband, wife/wives, unmarried female children, married male children, the husband's parents, and/or widowed aunts and uncles. Rarely, an individual would occupy his own house, typically in the mountains. Serrano villages also included a large ceremonial house where the lineage leader would live, which served as the religious center for lineages or lineage-sets, granaries, and sweatshouses (Bean and Smith 1978b).

The Serrano were primarily hunter/gatherers. Vegetal staples varied with locality. Acorns and piñon nuts were found in the foothills, and mesquite, yucca roots, cacti fruits, and piñon nuts were found in or near the desert regions. Diets were supplemented with other roots, bulbs, shoots, and seeds (Heizer 1978). Deer, mountain sheep, antelopes, rabbits, and other small rodents were among the principal food packages. Various game birds, especially quail, were also hunted. The bow and arrow was used for large game, while smaller game and birds were killed with curved throwing sticks, traps, and snares. Occasionally, game was hunted communally, often during mourning ceremonies (Benedict 1924; Drucker 1937; Heizer 1978). Earth ovens were used to cook meat, bones were boiled to extract marrow, and blood was either drunk cold or cooked to a thicker consistency and then eaten. Some meat and vegetables were sun-dried and stored. Food acquisition and processing required the manufacture of additional items such as knives, stone or bone scrapers, pottery trays and bowls, bone or horn spoons, and stirrers. Mortars, made of either stone or wood, and metates were also manufactured (Strong 1971; Drucker 1937; Benedict 1924).

The Serrano were very similar technologically to the Cahuilla. In general, manufactured goods included baskets, some pottery, rabbit-skin blankets, awls, arrow straighteners, sinew-backed bows, arrows, fire drills, stone pipes, musical instruments (rattles, rasps, whistles, bull-roarers, and flutes), feathered costumes, mats for floor and wall coverings, bags, storage pouches, cordage (usually comprised of yucca fiber), and nets (Heizer 1978).

1.3.2 Historic Period

Traditionally, the history of the state of California has been divided into three general periods: the Spanish Period (1769 to 1821), the Mexican Period (1822 to 1846), and the American Period (1848 to present) (Caughey 1970). The American Period is often further subdivided into additional phases: the nineteenth century (1848 to 1900), the early twentieth century (1900 to 1950), and the Modern Period (1950 to present). From an archaeological standpoint, all of these phases can be referred to together as the Ethnohistoric Period. This provides a valuable tool for archaeologists, as ethnohistory is directly concerned with the study of indigenous or non-Western peoples from a combined historical/anthropological viewpoint, which employs written documents, oral narrative, material culture, and ethnographic data for analysis.

European exploration along the California coast began in 1542 with the landing of Juan

Rodriguez Cabrillo and his men at San Diego Bay. Sixty years after the Cabrillo expeditions, an expedition under Sebastian Viscaíno made an extensive and thorough exploration of the Pacific coast. Although the voyage did not extend beyond the northern limits of the Cabrillo track, Viscaíno had the most lasting effect upon the nomenclature of the coast. Many of his place names have survived, whereas practically every one of the names created by Cabrillo have faded from use. For instance, Cabrillo named the first (now) United States port he stopped at “San Miguel”; 60 years later, Viscaíno changed it to “San Diego” (Rolle 1969). The early European voyages observed Native Americans living in villages along the coast but did not make any substantial, long-lasting impact. At the time of contact, the Luiseño population was estimated to have ranged from 4,000 to as many as 10,000 individuals (Bean and Shipek 1978; Kroeber 1976).

The historic background of the project area began with the Spanish colonization of Alta California. The first Spanish colonizing expedition reached southern California in 1769 with the intention of converting and civilizing the indigenous populations, as well as expanding the knowledge of and access to new resources in the region (Brigandi 1998). As a result, by the late eighteenth century, a large portion of southern California was overseen by Mission San Luis Rey (San Diego County), Mission San Juan Capistrano (Orange County), and Mission San Gabriel (Los Angeles County), who began colonizing the region and surrounding areas (Chapman 1921).

Native Californians may have first coalesced with Europeans around 1769 when the first Spanish mission was established in San Diego. In 1771, Friar Francisco Graces first searched the Californian desert for potential mission sites. Interactions between local tribes and Franciscan priests occurred by 1774 when Juan Bautista De Anza made an exploration of Alta California.

Serrano contact with the Europeans may have occurred as early as 1771 or 1772, but it was not until approximately 1819 that the Spanish directly influenced the culture. The Spanish established *asistencias* in San Bernardino, Pala, and Santa Ysabel. Between the founding of the *asistencia* and secularization in 1834, most of the Serranos in the San Bernardino Mountains were removed to the nearby missions (Beattie and Beattie 1951:366) while the Cahuilla maintained a high level of autonomy from Spain (Bean 1978).

Each mission gained power through the support of a large, subjugated Native American workforce. As the missions grew, livestock holdings increased and became increasingly vulnerable to theft. In order to protect their interests, the southern California missions began to expand inland to try and provide additional security (Beattie and Beattie 1939; Caughey 1970). In order to meet their needs, the Spaniards embarked upon a formal expedition in 1806 to find potential locations within what is now the San Bernardino Valley. As a result, by 1810, Father Francisco Dumetz of Mission San Gabriel had succeeded in establishing a religious site, or *capilla*, at a Cahuilla *rancheria* called Guachama (Beattie and Beattie 1939). San Bernardino Valley received its name from this site, which was dedicated to San Bernardino de Siena by Father Dumetz. The Guachama *rancheria* was located in present-day Bryn Mawr in San Bernardino County.

These early colonization efforts were followed by the establishment of *estancias* at Puente

(circa 1816) and San Bernardino (circa 1819) near Guachama (Beattie and Beattie 1939). These efforts were soon mirrored by the Spaniards from Mission San Luis Rey, who in turn established a presence in what is now Lake Elsinore, Temecula, and Murrieta (Chapman 1921). The indigenous groups who occupied these lands were recruited by missionaries, converted, and put to work in the missions (Pourade 1961). Throughout this period, the Native American populations were decimated by introduced diseases, a drastic shift in diet resulting in poor nutrition, and social conflicts due to the introduction of an entirely new social order (Cook 1976).

Mexico achieved independence from Spain in 1822 and became a federal republic in 1824. As a result, both Baja and Alta California became classified as territories (Rolle 1969). Shortly thereafter, the Mexican Republic sought to grant large tracts of private land to its citizens to begin to encourage immigration to California and to establish its presence in the region. Part of the establishment of power and control included the desecularization of the missions circa 1832. These same missions were also located on some of the most fertile land in California and, as a result, were considered highly valuable. The resulting land grants, known as “ranchos,” covered expansive portions of California and by 1846, more than 600 land grants had been issued by the Mexican government. Rancho Jurupa was the first rancho to be established and was issued to Juan Bandini in 1838. Although Bandini primarily resided in San Diego, Rancho Jurupa was located in what is now Riverside County (Pourade 1963). A review of Riverside County place names quickly illustrates that many of the ranchos in Riverside County lent their names to present-day locations, including Jurupa, El Rincon, La Sierra, El Sobrante de San Jacinto, La Laguna (Lake Elsinore), Santa Rosa, Temecula, Pauba, San Jacinto Nuevo y Potrero, and San Jacinto Viejo (Gunther 1984). As was typical of many ranchos, these were all located in the valley environments within western Riverside County.

The treatment of Native Americans grew worse during the Rancho Period. Most of the Native Americans were forced off of their land or put to work on the now privately-owned ranchos, most often as slave labor. In light of the brutal ranchos, the degree to which Native Americans had become dependent upon the mission system is evident when, in 1838, a group of Native Americans from Mission San Luis Rey petitioned government officials in San Diego to relieve suffering at the hands of the rancheros:

We have suffered incalculable losses, for some of which we are in part to be blamed for because many of us have abandoned the Mission ... We plead and beseech you ... to grant us a Rev. Father for this place. We have been accustomed to the Rev. Fathers and to their manner of managing the duties. We labored under their intelligent directions, and we were obedient to the Fathers according to the regulations, because we considered it as good for us. (Brigandi 1998:21)

Native American culture had been disrupted to the point where they could no longer rely upon prehistoric subsistence and social patterns. Not only does this illustrate how dependent the

Native Americans had become upon the missionaries, but it also indicates a marked contrast in the way the Spanish treated the Native Americans as compared to the Mexican and United States ranchers. Spanish colonialism (missions) is based upon utilizing human resources while integrating them into their society. The ranchers, both Mexican and American, did not accept Native Americans into their social order and used them specifically for the extraction of labor, resources, and profit. Rather than being incorporated, they were either subjugated or exterminated (Cook 1976).

In 1846, war erupted between Mexico and the United States. In 1848, with the signing of the Treaty of Guadalupe Hidalgo, the region was annexed as a territory of the United States, and in 1850, California became a state. These events generated a steady flow of settlers into the area, including gold miners, entrepreneurs, health-seekers, speculators, politicians, adventurers, seekers of religious freedom, and individuals desiring to create utopian colonies. As the non-native population increased through immigration, the indigenous population rapidly declined from the high morbidity of European diseases, low birth rates, and conflict and violence. California became a state in 1850 and was divided into 21 counties. The dwindling native populations were eventually displaced into reservations after California became a state.

By the late 1880s and early 1890s, there was growing discontent between San Bernardino and Riverside, its neighbor 10 miles to the south, due to differences in opinion concerning religion, morality, the Civil War, politics, and fierce competition to attract settlers. After a series of instances in which charges were claimed about unfair use of tax monies to the benefit of only the city of San Bernardino, several people from Riverside decided to investigate the possibility of a new county. In May of 1893, voters living within portions of San Bernardino County (to the north) and San Diego County (to the south) approved the formation of Riverside County. Early business opportunities were linked to the agriculture industry, but commerce, construction, manufacturing, transportation, and tourism also provided a healthy local economy.

General History of the Highland Area

The Highland area emerged from the combination of multiple settlements:

[...] that began in 1856 in the northeast at what is now The Village Lakes subdivision at Fifth and Orange Streets. This section came to be [known] as Cramville after the first white settlers, John Henry Cram and six of his eight sons.

To the west in 1857, the first white settler, Henry Rabel, first bought forty acres on Base Line (which had been set in 1852) west of the present Victoria Avenue. In 1859 he purchased 80 more acres, and the area became known as Rabel Springs because of the large pond filled with clear water from artesian and thermal wells. Rabel erected bath houses and an eleven-room hotel where guests could stay while they bathed in the medicinal springs. There were changes in [Rabel] over the years,

and the area became an even more popular recreation spot with the founding of Harlem Springs in 1887, just to the east of Victoria Avenue. With a swimming pool, bath houses, an entertainment hall, and picnic grounds, Harlem also attracted many guests. (Beattie 1994)

Highland was formed out of the settlement of Messina, which, in 1873, was located at Base Line Street and Palm Avenue. Messina became a commercial center, and a number of commercial and civic buildings were constructed there. In 1869, Cramville formed a school district, and Messina formed a school district named Highland around the same time. The general area became known as “The Highlands” due to its proximity to the San Bernardino Mountains (Beattie 1994; City of Highland 2006). Development continued during the latter part of the nineteenth century spurred on by the development of citrus orchards in the region. This required better access to water which led to the construction of the North Fork Ditch:

The construction of the North Fork Ditch began in 1881, bringing water from the upper part of the Cram and Van Ditch west along the mountain front, crossing City Creek, and terminating near the present intersection of Palm and Highland Avenues. (City of Highland 2006)

Also in 1881, the Santa Fe Railroad extended its tracks from Los Angeles as far east as Redlands. In 1885, the Santa Fe Railroad (California Southern Railway) constructed a new line through the Cajon Pass which led to further expansion of rail lines in the area (Beattie 1994). In 1892, a rail line loop that ran from Mentone through Cramville, Highland, and Del Rosa was constructed. This line formed the kite-shaped track which extended from Los Angeles through the San Gabriel Valley to San Bernardino, Redlands, and back to Los Angeles through Riverside and the Santa Ana Valley (Beattie 1994).

Prompted by the construction of a rail line through the area, the original Highland townsite was surveyed in 1891 and recorded in 1893. It consisted of the area south of Pacific Street between Palm Avenue and Church Avenue, including the south side of Main Street. Additional development occurred on unplatted lands on Pacific Street west of Palm Avenue. After construction of the rail line, packing houses aligned themselves with the rail line, creating a diagonal swath (“packing house row”) through the center of the town. (City of Highland 2006)

In 1911, the kite-shaped track was acquired by the Pacific Electric Railway which provided passenger service until the mid-1930s. During the early part of the twentieth century, packing houses were constructed to process the citrus grown in the region. However, increased access to other forms of transportation, leading to the abandonment of the Pacific Electric Railway, the Great

Depression, and a devastating freeze in 1937 “led to the economic stagnation of the Highland area” (City of Highland 2006).

Suburbanization of the Highland area began as early as 1943 with the establishment of the San Bernardino Army Air Depot (now San Bernardino International Airport). Citrus groves were removed and replaced with housing. As the suburbanization process accelerated in the postwar population explosion period, area packinghouses lost their support base and were largely converted to various industrial uses. This early suburbanization moved east from the San Bernardino area, stopping at City Creek. Suburban development east of City Creek did not occur until much later, primarily spurred by the development of East Highlands Ranch in the 1980s. (City of Highland 2006)

In 1987, the City of Highland was incorporated. In 1994, the San Bernardino Army Air Depot (by this time known as Norton Air Force Base) was officially closed. The closure of the base led to a decrease of population in the area. “Residential developments that were known for their quality and attractiveness quickly deteriorated from a lack of maintenance and an infiltration of crime” (City of Highland 2006). However, in recent years, the completion of Interstate 210, expansion of San Bernardino International Airport (the former Norton Air Force Base), and new residential and commercial developments have brought new growth to the region (City of Highland 2006).

1.4 Results of the Archaeological Records Search

An archaeological records search was conducted at the SCCIC at CSU Fullerton. The records search results identified a total of eight cultural resources located within one mile of the project, none of which are mapped within the subject property (Table 1.4–1). Only a single prehistoric resource, an isolated artifact, was identified within the search radius; the remaining seven resources include one historic refuse scatter; two historic single-family properties, one with an associated refuse scatter; Baseline Road; and three historic structures associated with the San Bernardino Army Air Depot.

Table 1.4–1

Cultural Resources Within One Mile of the Harikrishna Retail/Commercial Center Project

Site Number(s)	Site Type
P-36-006096	Historic trash scatter
P-36-012352	Historic single-family residence
P-36-013750	Historic single-family property with associated trash scatter

Site Number(s)	Site Type
P-36-015497	Historic Baseline Road
P-36-015550	Historic San Bernardino Army Air Depot fire station
P-36-015554 and P-36-015555	Historic San Bernardino Army Air Depot portable hanger/vehicle maintenance shop
P-36-060203	Prehistoric isolate

The records search also identified 28 previous studies conducted within one mile of the project, three of which overlap the project (Hammond 1999; Hoover and Blevins 2007; Tang and Hogan 2011). Two of these previous studies (Hoover and Blevins 2007; Tang and Hogan 2011) address only small portions of the subject property; however, the 1999 study by Stephen Hammond, which was conducted for road widening improvements to 5th Street, covered the entire southern portion of the project. No cultural resources were identified within or adjacent to the subject property as a result of these studies. The complete records search results can be found within Appendix B.

BFSA also reviewed the following sources to help facilitate a better understanding of the historic use of the property:

- The National Register of Historic Places Index
- The Office of Historic Preservation, Archaeological Determinations of Eligibility
- The Office of Historic Preservation, Built Environment Resources Directory
- Historic USGS maps
- Historic aerial photographs (1938, 1959, 1966, 1968, 1980, 1984, 1994, 2002, 2005, 2007, 2012, 2013, and 2020)

These sources did not indicate the presence of any additional archaeological resources within the project. According to the aerial photographs, the property has been vacant since at least the late 1930s. The 1938 aerial photograph shows Palm Avenue along the western edge of the property; however, the project is vacant and undeveloped. By 1959, West 5th Street is present, but the property has not changed since 1938. Subsequent photographs show the steady development of surrounding properties with the current project appearing to have been cleared sometime between 1968 and 1980. After 1980, the property appears to be repeatedly cleared and possibly graded. Between 1980 and 1984, the northeastern corner begins to be utilized for parking and storage of equipment, while improvements to adjacent roads, including widening and the installation of curb and sidewalks, are visible between 1984 and 1994. In 2007, a fenced yard is visible in the northeastern corner. Between 2012 and 2013, the Meines Court cul-de-sac along the northwestern boundary of the property was developed.

BFSA also requested a SLF search from the NAHC to search for the presence of any

recorded Native American sacred sites or locations of religious or ceremonial importance within one mile of the project. As of the date of this report, no response has been received. All correspondence is provided in Appendix C.

1.5 Applicable Regulations

Resource importance is assigned to districts, sites, buildings, structures, and objects that possess exceptional value or quality illustrating or interpreting the heritage of San Bernardino County in history, architecture, archaeology, engineering, and culture. A number of criteria are used in demonstrating resource importance. Specifically, the criteria outlined in CEQA, provide the guidance for making such a determination. The following sections detail the criteria that a resource must meet in order to be determined important.

1.5.1 California Environmental Quality Act

According to CEQA (§15064.5a), the term “historical resource” includes the following:

- 1) A resource listed in or determined to be eligible by the State Historical Resources Commission for listing in the California Register of Historical Resources (CRHR) (Public Resources Code SS5024.1, Title 14 CCR. Section 4850 et seq.).
- 2) A resource included in a local register of historical resources, as defined in Section 5020.1(k) of the Public Resources Code or identified as significant in an historical resource survey meeting the requirements of Section 5024.1(g) of the Public Resources Code, shall be presumed to be historically or culturally significant. Public agencies must treat any such resource as significant unless the preponderance of evidence demonstrates that it is not historically or culturally significant.
- 3) Any object, building, structure, site, area, place, record, or manuscript, which a lead agency determines to be historically significant or significant in the architectural, engineering, scientific, economic, agricultural, educational, social, political, military, or cultural annals of California may be considered to be an historical resource, provided the lead agency’s determination is supported by substantial evidence in light of the whole record. Generally, a resource shall be considered by the lead agency to be “historically significant” if the resource meets the criteria for listing on the CRHR (Public Resources Code SS5024.1, Title 14, Section 4852) including the following:
 - a) Is associated with events that have made a significant contribution to the broad patterns of California’s history and cultural heritage;
 - b) Is associated with the lives of persons important in our past;
 - c) Embodies the distinctive characteristics of a type, period, region, or method of construction, or represents the work of an important creative individual, or possesses high artistic values; or

- d) Has yielded, or may be likely to yield, information important in prehistory or history.
- 4) The fact that a resource is not listed in, or determined eligible for listing in the CRHR, not included in a local register of historical resources (pursuant to Section 5020.1[k] of the Public Resources Code), or identified in an historical resources survey (meeting the criteria in Section 5024.1(g) of the Public Resources Code) does not preclude a lead agency from determining that the resource may be an historical resource as defined in Public Resources Code Section 5020.1(j) or 5024.1.

According to CEQA (§15064.5b), a project with an effect that may cause a substantial adverse change in the significance of an historical resource is a project that may have a significant effect on the environment. CEQA defines a substantial adverse change as:

- 1) Substantial adverse change in the significance of an historical resource means physical demolition, destruction, relocation, or alteration of the resource or its immediate surroundings such that the significance of an historical resource would be materially impaired.
- 2) The significance of an historical resource is materially impaired when a project:
 - a) Demolishes or materially alters in an adverse manner those physical characteristics of an historical resource that convey its historical significance and that justify its inclusion in, or eligibility for inclusion in the CRHR; or
 - b) Demolishes or materially alters in an adverse manner those physical characteristics that account for its inclusion in a local register of historical resources pursuant to Section 5020.1(k) of the Public Resources Code or its identification in an historical resources survey meeting the requirements of Section 5024.1(g) of the Public Resources Code, unless the public agency reviewing the effects of the project establishes by a preponderance of evidence that the resource is not historically or culturally significant; or,
 - c) Demolishes or materially alters in an adverse manner those physical characteristics of an historical resource that convey its historical significance and that justify its eligibility for inclusion in the CRHR as determined by a lead agency for purposes of CEQA.

Section 15064.5(c) of CEQA applies to effects on archaeological sites and contains the following additional provisions regarding archaeological sites:

- 1) When a project will impact an archaeological site, a lead agency shall first determine

- whether the site is an historical resource, as defined in subsection (a).
- 2) If a lead agency determines that the archaeological site is an historical resource, it shall refer to the provisions of Section 21084.1 of the Public Resources Code, Section 15126.4 of the guidelines, and the limits contained in Section 21083.2 of the Public Resources Code do not apply.
 - 3) If an archaeological site does not meet the criteria defined in subsection (a), but does meet the definition of a unique archaeological resource in Section 21083.2 of the Public Resources Code, the site shall be treated in accordance with the provisions of Section 21083.2. The time and cost limitations described in Public Resources Code Section 21083.2 (c-f) do not apply to surveys and site evaluation activities intended to determine whether the project location contains unique archaeological resources.
 - 4) If an archaeological resource is neither a unique archaeological nor historical resource, the effects of the project on those resources shall not be considered a significant effect on the environment. It shall be sufficient that both the resource and the effect on it are noted in the Initial Study or Environmental Impact Report, if one is prepared to address impacts on other resources, but they need not be considered further in the CEQA process.

Section 15064.5(d) and (e) contain additional provisions regarding human remains. Regarding Native American human remains, paragraph (d) states:

- (d) When an Initial Study identifies the existence of, or the probable likelihood of, Native American human remains within the project, a lead agency shall work with the appropriate Native Americans as identified by the NAHC as provided in Public Resources Code SS5097.98. The applicant may develop an agreement for treating or disposing of, with appropriate dignity, the human remains and any items associated with Native American burials with the appropriate Native Americans as identified by the NAHC. Action implementing such an agreement is exempt from:
 - 1) The general prohibition on disinterring, disturbing, or removing human remains from any location other than a dedicated cemetery (Health and Safety Code Section 7050.5).
 - 2) The requirements of CEQA and the Coastal Act.

2.0 **RESEARCH DESIGN**

The primary goal of the research design is to attempt to understand the way in which humans have used the land and resources within the project through time, as well as to aid in the determination of resource significance. For the current project, the study area under investigation is southwestern San Bernardino County. The scope of work for the cultural resources study conducted for the Harikrishna Retail/Commercial Center included the survey of a 1.89-acre study area. Given the area involved and the presence of nearby archaeological sites, the research design for this project was focused upon realistic study options. Since the main objective of the investigation was to identify the presence of and potential impacts to cultural resources, the goal here is not necessarily to answer wide-reaching theories regarding the development of early southern California, but to investigate the role and importance of identified resources. Nevertheless, the assessment of the significance of a resource must take into consideration a variety of factors, as well as the ability of a resource to address regional research topics and issues.

Although elementary resource evaluation programs are limited in terms of the amount of information available, several specific research questions were developed that could be used to guide the initial investigations of any observed cultural resources. The following research questions consider the small size and location of the project discussed above.

Research Questions:

- Can located cultural resources be associated with a specific time period, population, or individual?
- Do the types of any located cultural resources allow a site activity/function to be determined from a preliminary investigation? What are the site activities? What is the site function? What resources were exploited?
- How do located sites compare to others reported from different surveys conducted in the area?
- How do located sites fit existing models of settlement and subsistence for mountainous environments of the region?

Data Needs

At the survey level, the principal research objective is a generalized investigation of changing settlement patterns in both the prehistoric and historic periods within the study area. The overall goal is to understand settlement and resource procurement patterns of the project occupants. Therefore, adequate information on site function, context, and chronology from an archaeological perspective is essential for the investigation. The fieldwork and archival research were undertaken with the following primary research goals in mind:

- 1) To identify cultural resources occurring within the project;
- 2) To determine, if possible, site type and function, context of the resource(s), and chronological placement of each cultural resource identified;
- 3) To place each cultural resource identified within a regional perspective; and
- 4) To provide recommendations for the treatment of each cultural resources identified.

3.0 ANALYSIS OF PROJECT EFFECTS

The cultural resources study of the project site consisted of an institutional records search, archival research, an intensive cultural resource survey of the entire 1.89-acre study area, and the preparation of this technical report. This study was conducted in conformance with Section 21083.2 of the California Public Resources Code, and CEQA. Statutory requirements of CEQA (Section 15064.5) were followed for the identification and evaluation of resources. Specific definitions for archaeological resource type(s) used in this report are those established by the State Historic Preservation Office (SHPO 1995).

3.1 Survey Methods

The survey methodology employed during the current investigation followed standard archaeological field procedures and was sufficient to accomplish a thorough assessment of the project. The field methodology employed for the project included walking evenly spaced survey transects set approximately 10 meters apart while visually inspecting the ground surface. All potentially sensitive areas where cultural resources might be located were closely inspected. Photographs documenting survey areas and overall survey conditions were taken frequently.

3.2 Results of the Field Survey

Director of Field Operations Clarence Hoff conducted the archaeological survey for the project on November 11, 2022. The archaeological survey was an intensive reconnaissance consisting of a series of survey transects across the project. Survey conditions were generally good and ground visibility was excellent as vegetation was minimal. The property has been previously cleared and appeared to have been graded, which provided an unobstructed view of the ground surface (Plates 3.2-1 and 3.2-2). The fenced storage yard noted in the northeastern corner of the property beginning in 2007 remains on the property. However, the project is no longer being utilized for the storage or parking of equipment (Plates 3.2-3 and 3.2-4). The survey did not result in the identification of any historic or prehistoric cultural resources within the project.



Plate 3.2-1: Overview of the project, facing southeast.



Plate 3.2-2: Overview of the project, facing northwest.



Plate 3.2-3: Overview of the project and fenced yard, facing southwest.



Plate 3.2-4: Overview of the fenced yard in the northeast portion of project, facing northwest.

4.0 RECOMMENDATIONS

The cultural resources survey for the Harikrishna Retail/Commercial Center Project was negative for the presence of archaeological sites. As a result of recent clearing of the property, ground visibility during the survey was excellent. Further, property research indicates that the project has been vacant since at least the late 1930s. A review of aerial photographs shows the property has been repeatedly cleared and graded while improvements to adjacent roads have also impacted the subject property. Therefore, as a result of the research findings, the documented land use of the property, and the current survey results, it is very unlikely that any cultural resources exist within the project.

Given that no archaeological sites, features, or artifacts have been identified within or adjacent to the project, no potential impacts to cultural resources are associated with the proposed development. The archaeological study was completed in accordance with the City of Highland environmental policies and CEQA significance evaluation criteria. Based upon the absence of any cultural resources within the subject property, site-specific mitigation measures will not be required for this project. Further, as a result of previous ground-disturbing activities and the absence of identified cultural resources within the project boundaries, there is little potential for cultural resources to be present or disturbed by the proposed development. No further archaeological study or mitigation measures are recommended as a condition of permit approval based upon the results of the current study.

5.0 LIST OF PREPARERS AND ORGANIZATIONS CONTACTED

The archaeological survey program for the Harikrishna Retail/Commercial Center Project was directed by Principal Investigator Brian F. Smith. The archaeological fieldwork was conducted by Director of Field Operations Clarence Hoff. The report text was prepared Andrew Garrison. Report graphics were provided by Emily Soong. Technical editing and report production were conducted by Courtney McNair. The archaeological records search was requested from the SCCIC at CSU Fullerton.

6.0 REFERENCES CITED

Antevs, Ernst

- 1953 The Postpluvial or the Neothermal. *University of California Archaeological Survey Reports* 22:9-23. Berkeley, California.

Bean, Lowell John

- 1978 Cahuilla. In *California*, edited by R.F. Heizer, pp. 575-587. Handbook of North American Indians, Vol. 8. William C. Sturtevant, general editor, Smithsonian Institution, Washington, D.C.

Bean, Lowell John and Charles R. Smith

- 1978a Gabrielino. In *California*, edited by R.F. Heizer. Handbook of North American Indians, Vol. 8. William C. Sturtevant, general editor, Smithsonian Institution, Washington, D.C.

- 1978b Serrano. In *California*, edited by R.F. Heizer, pp. 570-574. Handbook of North American Indians, Vol. 8. William C. Sturtevant, general editor, Smithsonian Institution, Washington, D.C.

Bean, Lowell John and Florence C. Shipek

- 1978 Luiseño. In *California*, edited by Robert F. Heizer, pp. 550-563. Handbook of North American Indians, Vol. 8. William C. Sturtevant, general editor, Smithsonian Institution, Washington, D.C.

Beattie, Kay

- 1994 A Brief History of Highland. Electronic document, [https://www.highlandhistory.org/ABriefHistoryofHighlandByKayBeattie\(June1994\).php](https://www.highlandhistory.org/ABriefHistoryofHighlandByKayBeattie(June1994).php), accessed November 30, 2022.

Beattie, George W. and Helen P. Beattie

- 1951 *Heritage of the Valley: San Bernardino's First Century*. Biobooks, Oakland, California.

Benedict, Ruth Fulton

- 1924 A Brief Sketch of Serrano Culture. *American Anthropologist* 26(3).

Brigandi, Phil

- 1998 *Temecula: At the Crossroads of History*. Heritage Media Corporation, Encinitas, California.

Caughey, John W.

- 1970 *California: A Remarkable State's Life History*. 3rd ed. Prentice-Hall, Englewood Cliffs, New Jersey.

Chapman, Charles E.

1921 *A History of California: The Spanish Period*. The Macmillan Company, New York.

City of Highland

2006 City of Highland General Plan, Land Use Element. Electronic document, <https://www.cityofhighland.org/DocumentCenter/View/3216/Land-Use-Element-PDF>, accessed November 30, 2022.

Cook, Sherburne F.

1976 *The Conflict Between the California Indian and White Civilization*. University of California Press, Berkeley and Los Angeles, California.

Curry, Joseph R.

1965 Late Quaternary History: Continental Shelves of the United States. *Quaternary of the United States*, edited by H.E. Wright Jr. and D.G. Frey, pp. 723-735. Princeton University Press, New Jersey.

Drucker, Philip

1937 Culture Element Distributions: V. Southern California. *Anthropological Records* 1(1):1-52. University of California, Berkeley.

Erlandson, John M. and Roger H. Colten (editors)

1991 An Archaeological Context for Archaeological Sites on the California Coast. In *Hunter-Gatherers of Early Holocene Coastal California*, edited by J.M. Erlandson and R.H. Colten. Perspectives in California Archaeology, Volume 1, Institute of Archaeology, University of California, Los Angeles.

Fagan, Brian M.

1991 *Ancient North America: The Archaeology of a Continent*. Thames and Hudson, London.

Gallegos, Dennis

1985 Batiquitos Lagoon Revisited. In *Cultural Resource Management Casual Papers* 2(1). Department of Anthropology, San Diego State University.

2002 Southern California in Transition: Late Holocene Occupation of Southern San Diego County. In *Catalysts to Complexity: Late Holocene Societies of the California Coast*, edited by Jon M. Erlandson and Terry Jones. Cotsen Institute of Archaeology, University of California, Los Angeles.

Gunther, Jane Davies

1984 *Riverside County, California, Place Names: Their Origins and Their Stories*. Rubidoux Printing, Riverside, California.

Hammond, Stephen

- 1999 Replacement of City Creek Bridge & Widening of State Route 30. CalTrans. Unpublished report on file at the South Central Coastal Information Center at California State University at Fullerton, Fullerton, California.

Heizer, Robert F.

- 1978 Trade and Trails. In *California*, edited by Robert F. Heizer, pp. 690-693. Handbook of North American Indians, Vol. 8. William C. Sturtevant, general editor, Smithsonian Institution, Washington, D.C.

Hoover, Anna M. and Kristie R. Blevins

- 2007 A Phase I Archaeological Survey Report for APNs 1201-301-01 to -03 and -09, Located Between 5th and Palm St, City of Highland, San Bernardino County, California. L&L Environmental, Inc. Unpublished report on file at the South Central Coastal Information Center at California State University at Fullerton, Fullerton, California.

Inman, Douglas L.

- 1983 Application of Coastal Dynamics to the Reconstruction of Paleocoastlines in the Vicinity of La Jolla, California. *Quaternary Coastlines and Marine Archaeology*, edited by Patricia M. Masters and N.C. Flemming, pp. 1-49. Academic Press, Inc., Orlando, Florida.

King, Chester DeWitt and Thomas C. Blackburn

- 1978 Tataviam. In *California*, edited by Robert F. Heizer. Handbook of North American Indians, Vol. 8. William C. Sturtevant, general editor. Smithsonian Institution, Washington, D.C.

Kroeber, Alfred L.

- 1976 *Handbook of the Indians of California*. Reprinted. Dover Editions, Dover Publications, Inc., New York. Originally published 1925, Bulletin No. 78, U.S. Government Printing Office, Washington, D.C.

Lyman, Edward Leo

- 1989 The Rise and Decline of Mormon San Bernardino. *Brigham Young University Studies* 29(4):43-63. Brigham Young University, Provo, Utah.

Martin, Paul S.

- 1967 Prehistoric Overkill. In *Pleistocene Extinctions: The Search for a Cause*, edited by Paul S. Martin and H.E. Wright. Yale University Press, New Haven, Connecticut.

- 1973 The Discovery of America. *Science* 179(4077):969-974.

Masters, Patricia M.

- 1983 Detection and Assessment of Prehistoric Artifact Sites off the Coast of Southern

- California. In *Quaternary Coastlines and Marine Archaeology: Towards the Prehistory of Land Bridges and Continental Shelves*, edited by Patricia M. Masters and Nicholas C. Fleming, pp. 189-213. Academic Press, London.
- 1994 *Archaeological Investigations at Five Sites on the Lower San Luis Rey River, San Diego County, California*, edited by Michael Moratto, pp. A1-A19. INFOTEC Research, Inc., Fresno, California and Gallegos and Associates, Pacific Palisades, California.
- Miller, Jaquelin Neva
- 1966 The Present and Past Molluscan Faunas and Environments of Four Southern California Coastal Lagoons. Master's Thesis, Scripps Institution of Oceanography, University of California at San Diego.
- Moratto, Michael J.
- 1984 *California Archaeology*. Academic Press, New York.
- Morton, D.M. and F.K. Miller
- 2006 Geologic Map of the San Bernardino and Santa Ana 30' x 60' Quadrangles, California, v. 1.0. U.S. Geological Survey Open-File Report 2006-1217.
- Moss, Madonna L. and Jon M. Erlandson
- 1995 Reflections on North American Pacific Coast Prehistory. *Journal of World Prehistory* 9(1):1-46.
- Natural Resources Conservation Service (NRCS)
- 2022 Web Soil Survey. Electronic document, <https://websoilsurvey.sc.egov.usda.gov/App/WebSoilSurvey.aspx>, accessed January 5, 2022.
- Patterson, Tom
- 1971 *A Colony for California: Riverside's First Hundred Years*. Press-Enterprise, Riverside, California.
- Pourade, Richard F.
- 1961 *Time of the Bells*. The History of San Diego Volume 2. Union-Tribune Publishing Company, San Diego, California.
- 1963 The Silver Dons. In *The History of San Diego* (Volume 3). Union-Tribune Publishing Company, San Diego, California.
- Reddy, Seetha
- 2000 Settling the Highlands: Late Holocene Highland Adaptations on Camp Pendleton, San Diego County California. Prepared for the Army Corps of Engineers by ASM Affiliates. Manuscript on file at South Coastal Information Center at San Diego State University, San Diego, California.

Rogers, Malcolm

- 1929 Archaeological Field Work in North America During 1928, California. *American Anthropologist* 31(2): 340-341.

Rolle, Andrew F.

- 1969 *California: A History*. 2nd ed. Thomas Y. Crowell Company, New York.

State Historic Preservation Office (SHPO)

- 1995 *Instructions for Recording Historical Resources*. Office of Historic Preservation, Sacramento.

Strong, William Duncan

- 1971 Aboriginal Society in Southern California. Reprint of 1929 *Publications in American Archaeology and Ethnology* No. 26, University of California, Berkeley.

Tang, Bai “Tom” and Michael Hogan

- 2011 Historic Property Survey Report: Tiger 5th Street Improvement Project, Cities of Highland and San Bernardino, San Bernardino County, California. CRM Tech. Unpublished report on file at the South Central Coastal Information Center at California State University at Fullerton, Fullerton, California.

Van Devender, Thomas R. and W. Geoffrey Spaulding

- 1979 Development of Vegetation and Climate in the Southwestern United States. *Science* 204(4394):701-710.

Warren, Claude N. and M.G. Pavesic

- 1963 Shell Midden Analysis of Site SDI-603 and Ecological Implications for Cultural Development of Batiquitos Lagoon, San Diego County, Los Angeles. University of California, Los Angeles, Archaeological Survey Annual Report, 1960-1961:246-338.

Wirths, Todd A.

- 2022 Paleontological Assessment for the Harikrishna Retail/Commercial Center Project, City of Highland, San Bernardino County, California. BFSa Environmental Services, a Perennial Company. Report in progress.

APPENDIX A

Resumes of Key Personnel

Andrew J. Garrison, MA, RPA

Project Archaeologist

Brian F. Smith and Associates, Inc.
14010 Poway Road • Suite A •
Phone: (858) 679-8218 • Fax: (858) 679-9896 • E-Mail: agarrison@bfsa-ca.com



Education

Master of Arts, Public History, University of California, Riverside	2009
Bachelor of Science, Anthropology, University of California, Riverside	2005
Bachelor of Arts, History, University of California, Riverside	2005

Professional Memberships

Register of Professional Archaeologists	Society of Primitive Technology
Society for California Archaeology	Lithic Studies Society
Society for American Archaeology	California Preservation Foundation
California Council for the Promotion of History	Pacific Coast Archaeological Society

Experience

Project Archaeologist **June 2017–Present**
Brian F. Smith and Associates, Inc. **Poway, California**

Project management of all phases of archaeological investigations for local, state, and federal agencies including National Register of Historic Places (NRHP) and California Environmental Quality Act (CEQA) level projects interacting with clients, sub-consultants, and lead agencies. Supervise and perform fieldwork including archaeological survey, monitoring, site testing, comprehensive site records checks, and historic building assessments. Perform and oversee technological analysis of prehistoric lithic assemblages. Author or co-author cultural resource management reports submitted to private clients and lead agencies.

Senior Archaeologist and GIS Specialist **2009–2017**
Scientific Resource Surveys, Inc. **Orange, California**

Served as Project Archaeologist or Principal Investigator on multiple projects, including archaeological monitoring, cultural resource surveys, test excavations, and historic building assessments. Directed projects from start to finish, including budget and personnel hours proposals, field and laboratory direction, report writing, technical editing, Native American consultation, and final report submittal. Oversaw all GIS projects including data collection, spatial analysis, and map creation.

Preservation Researcher **2009**
City of Riverside Modernism Survey **Riverside, California**

Completed DPR Primary, District, and Building, Structure and Object Forms for five sites for a grant-funded project to survey designated modern architectural resources within the City of Riverside.

Information Officer
Eastern Information Center (EIC), University of California, Riverside

2005, 2008–2009
Riverside, California

Processed and catalogued restricted and unrestricted archaeological and historical site record forms. Conducted research projects and records searches for government agencies and private cultural resource firms.

Reports/Papers

- 2019 A Class III Archaeological Study for the Tuscany Valley (TM 33725) Project National Historic Preservation Act Section 106 Compliance, Lake Elsinore, Riverside County, California. Contributing author. Brian F. Smith and Associates, Inc.
- 2019 A Phase I and II Cultural Resources Assessment for the Jack Rabbit Trail Logistics Center Project, City of Beaumont, Riverside County, California. Brian F. Smith and Associates, Inc.
- 2019 A Phase I Cultural Resources Assessment for the 10575 Foothill Boulevard Project, Rancho Cucamonga, California. Brian F. Smith and Associates, Inc.
- 2019 Cultural Resources Study for the County Road and East End Avenue Project, City of Chino, San Bernardino County, California. Brian F. Smith and Associates, Inc.
- 2019 Phase II Cultural Resource Study for the McElwain Project, City of Murrieta, California. Contributing author. Brian F. Smith and Associates, Inc.
- 2019 A Section 106 (NHPA) Historic Resources Study for the McElwain Project, City of Murrieta, Riverside County, California. Brian F. Smith and Associates, Inc.
- 2018 Cultural Resource Monitoring Report for the Sewer Group 818 Project, City of San Diego. Brian F. Smith and Associates, Inc.
- 2018 Phase I Cultural Resource Survey for the Stone Residence Project, 1525 Buckingham Drive, La Jolla, California 92037. Brian F. Smith and Associates, Inc.
- 2018 A Phase I Cultural Resources Assessment for the Seaton Commerce Center Project, Riverside County, California. Brian F. Smith and Associates, Inc.
- 2017 A Phase I Cultural Resources Assessment for the Marbella Villa Project, City of Desert Hot Springs, Riverside County, California. Brian F. Smith and Associates, Inc.
- 2017 Phase I Cultural Resources Survey for TTM 37109, City of Jurupa Valley, County of Riverside. Brian F. Smith and Associates, Inc.
- 2017 A Phase I Cultural Resources Assessment for the Winchester Dollar General Store Project, Riverside County, California. Brian F. Smith and Associates, Inc.
- 2016 John Wayne Airport Jet Fuel Pipeline and Tank Farm Archaeological Monitoring Plan. Scientific Resource Surveys, Inc. On file at the County of Orange, California.
- 2016 Historic Resource Assessment for 220 South Batavia Street, Orange, CA 92868 Assessor's Parcel Number 041-064-4. Scientific Resource Surveys, Inc. Submitted to the City of Orange as part of

- Mills Act application.
- 2015 Historic Resource Report: 807-813 Harvard Boulevard, Los Angeles. Scientific Resource Surveys, Inc. On file at the South Central Coastal Information Center, California State University, Fullerton.
- 2015 Exploring a Traditional Rock Cairn: Test Excavation at CA-SDI-13/RBLI-26: The Rincon Indian Reservation, San Diego County, California. Scientific Resource Surveys, Inc.
- 2014 Archaeological Monitoring Results: The New Los Angeles Federal Courthouse. Scientific Resource Surveys, Inc. On file at the South Central Coastal Information Center, California State University, Fullerton.
- 2012 Bolsa Chica Archaeological Project Volume 7, Technological Analysis of Stone Tools, Lithic Technology at Bolsa Chica: Reduction Maintenance and Experimentation. Scientific Resource Surveys, Inc.

Presentations

- 2017 "Repair and Replace: Lithic Production Behavior as Indicated by the Debitage Assemblage from CA-MRP-283 the Hackney Site." Presented at the Society for California Archaeology Annual Meeting, Fish Camp, California.
- 2016 "Bones, Stones, and Shell at Bolsa Chica: A Ceremonial Relationship?" Presented at the Society for California Archaeology Annual Meeting, Ontario, California.
- 2016 "Markers of Time: Exploring Transitions in the Bolsa Chica Assemblage." Presented at the Society for California Archaeology Annual Meeting, Ontario, California.
- 2016 "Dating Duress: Understanding Prehistoric Climate Change at Bolsa Chica." Presented at the Society for California Archaeology Annual Meeting, Ontario, California.
- 2014 "New Discoveries from an Old Collection: Comparing Recently Identified OGR Beads to Those Previously Analyzed from the Encino Village Site." Presented at the Society for California Archaeology Annual Meeting, Visalia, California.
- 2012 Bolsa Chica Archaeology: Part Seven: Culture and Chronology. Lithic demonstration of experimental manufacturing techniques at the April meeting of The Pacific Coast Archaeological Society, Irvine, California.

APPENDIX B

Archaeological Records Search Results

(Deleted for Public Review; Bound Separately)

APPENDIX C

NAHC Sacred Lands File Search

(Deleted for Public Review; Bound Separately)