



COUNTY OF LAKE
COMMUNITY DEVELOPMENT DEPARTMENT
Planning Division
Courthouse - 255 N. Forbes Street
Lakeport, California 95453
Telephone: (707) 263-2221 FAX: (707) 263-2225

County Clerk
 Interested
Parties

**COUNTY OF LAKE
NOTICE OF INTENT
TO ADOPT A MITIGATED NEGATIVE DECLARATION**

Project Title: Green Lake Exotics; Major Use Permit (UP 20-20); Initial Study (IS 20-23)

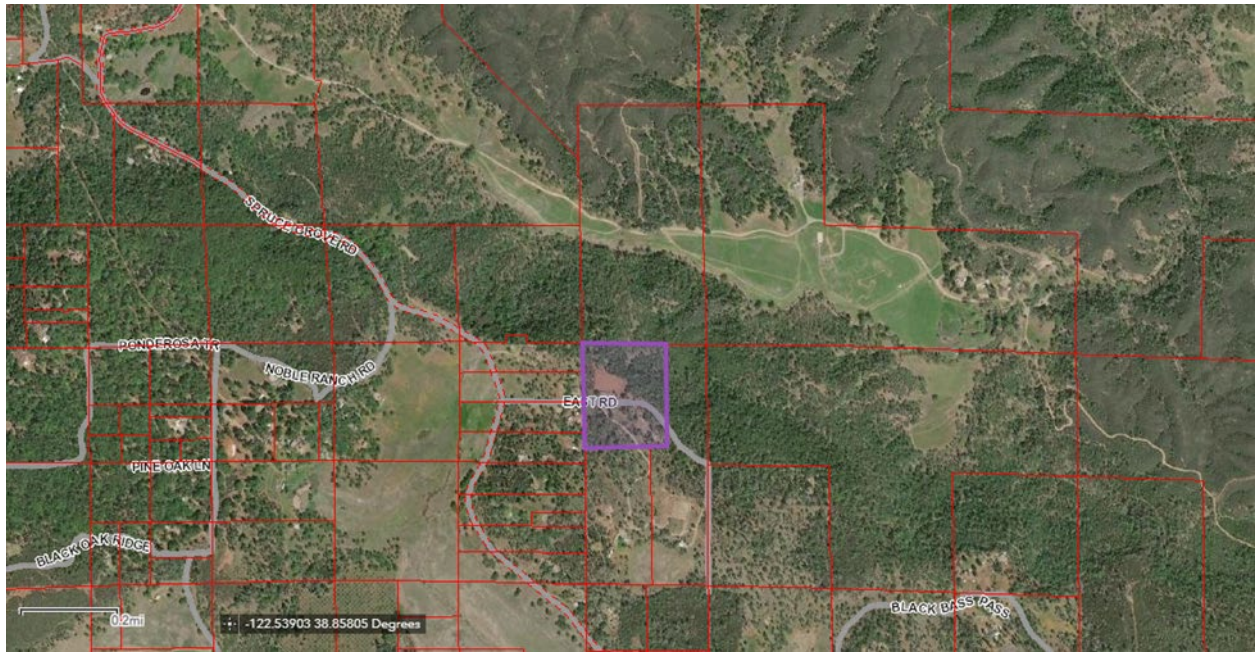
Project Location: 19658 East Road, Lower Lake, CA 95457

APN No.: 012-049-19

Project Description:

The project will contain a total of 24,150 ft² of outdoor commercial cannabis canopy area, 12,300 ft² of mixed-light commercial cannabis canopy area, and a 1,000 ft² propagation area at 19658 East Road, Lower Lake, CA on Lake County APN 012-049-19. The mixed-light cultivation will occur within three (3) 30'x100' greenhouses and one (1) 30'x110' greenhouse. In addition to the proposed canopy area, the full cultivation area proposes a 3,000 ft² utility building (30'x10'), a 150 ft² pesticide storage area (15'x10'), a 150 ft² fertilizer storage area (15'x10'), a 65 ft² compost area, a 150 ft² secure administration hold facility, a 200 ft² security office (20'x10'), an ADA compliant restroom, a 150 ft² harvest storage area (15'x10'), and a paved ADA parking area. Additionally, there will be an existing permitted groundwater well and two (2) 5,500-gallon water storage tanks used for all cultivation activity.

The public review period for the respective proposed Mitigated Negative Declaration based on Initial Study IS 20-23 will begin on February 17, 2023, and end on March 19, 2023. You are encouraged to submit written comments regarding the proposed Mitigated Negative Declaration. You may do so by submitting written comments to the Planning Division prior to the end of the review period. Copies of the application, environmental documents, and all reference documents associated with the project are available for review through the **Community Development Department, Planning Division; telephone (707) 263-2221 and the State Clearinghouse, SCH #: _____**. Written comments may be submitted to the Planning Division or via email at CannabisCEQA@lakecountyca.gov



Vicinity Map of Green Lake Exotics