

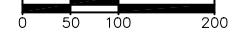
BAR X RANCH

LEFT TURN CHANNELIZATION CONCEPTS

EXISTING CONDITIONS

EXISTING CONDITIONS

22x34 SHEET: 1"=100'
 11x17 SHEET: 1"=200'



BAR X ENTRANCE AND CA-29 INTERSECTION
 20333 HWY 29 MIDDLETOWN, CA 95461

SHEET INDEX:

- C0 - EXISTING CONDITIONS
- C1 - CONCEPT 1 - WIDENING ON ONE SIDE
- C2 - CONCEPT 1 - WIDENING ON ONE SIDE - DETAILS
- C3 - CONCEPT 2 - WIDENING ON BOTH SIDES
- C4 - CONCEPT 2 - WIDENING ON BOTH SIDES - DETAILS



DATE	BY	REVISION
11/17/2021	DDR	REVISED EMPLOYEE PARKING AREA
12/14/2021	DDR	REVISED EMPLOYEE PARKING SPACES & BUILDING
12/14/2021	DDR	REVISED EMPLOYEE PARKING AREA

NORTHPOINT
 CONSULTING GROUP, INC.
 1117 Samoa Blvd., Arcata, CA 95521

BAR X RANCH - LEFT TURN CHANNELIZATION CONCEPTS
 20333 HWY 29 MIDDLETOWN, CA 95461
 EXISTING CONDITIONS

PROJ. MGR.: AD
 DRAWN BY: DDR
 DATE: 12/14/2021
 SCALE: AS SHOWN

SHEET
C0

December 14, 2021 - 12:56 Desi Nemei, P.E., BAR X Farms - Bar X Ranch - 21-028 (CAD) 210913 - Bar X Farms - TURN LANE CONCEPT.dwg Updated: Bk. BarX@npti.com

BAR X RANCH

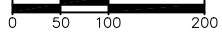
LEFT TURN CHANNELIZATION CONCEPTS

CONCEPT 1 - WIDENING ON ONE SIDE

BAR X FARMS ENTRANCE AND CA-29 INTERSECTION
2033 HWY 29 MIDDLETOWN, CA 95461

CONCEPT 1

22x34 SHEET: 1"=100'
11x17 SHEET: 1"=200'



DATE	REVISION	BY
11/17/2021	REVISED EMPLOYEE PARKING AREA	DDR
11/17/2021	REVISED EMPLOYEE PARKING SPACES & BUILDING	DDR
11/17/2021	REVISED EMPLOYEE PARKING AREA	DDR

NORTHPOINT
CONSULTING GROUP, INC.
1117 Samoa Blvd., Arcata, CA 95521

BAR X RANCH - LEFT TURN CHANNELIZATION CONCEPTS
20333 HWY 29 MIDDLETOWN, CA 95461
CONCEPT 1 - WIDENING ON ONE SIDE

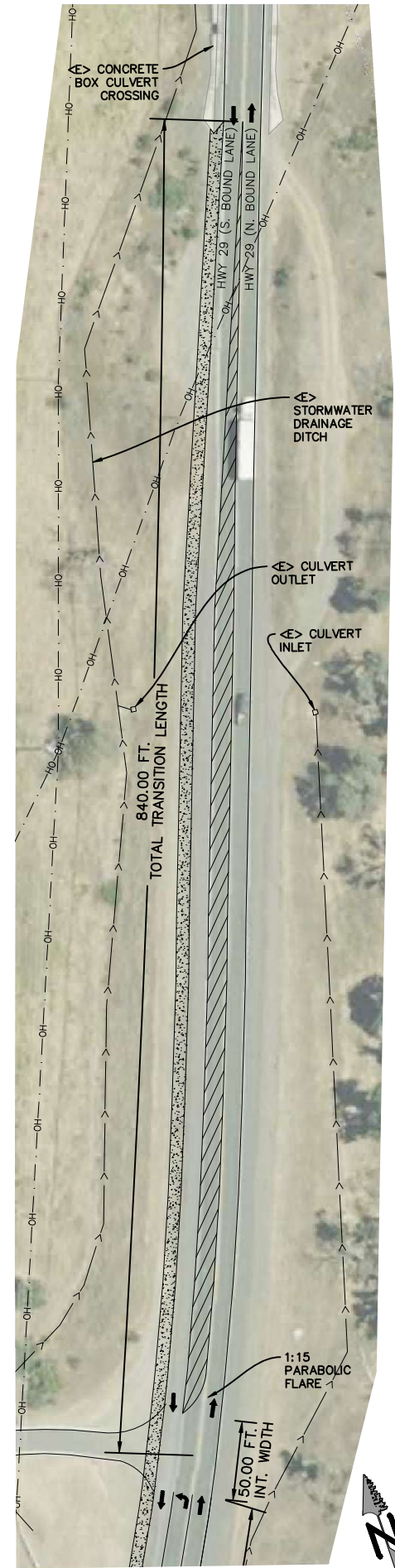
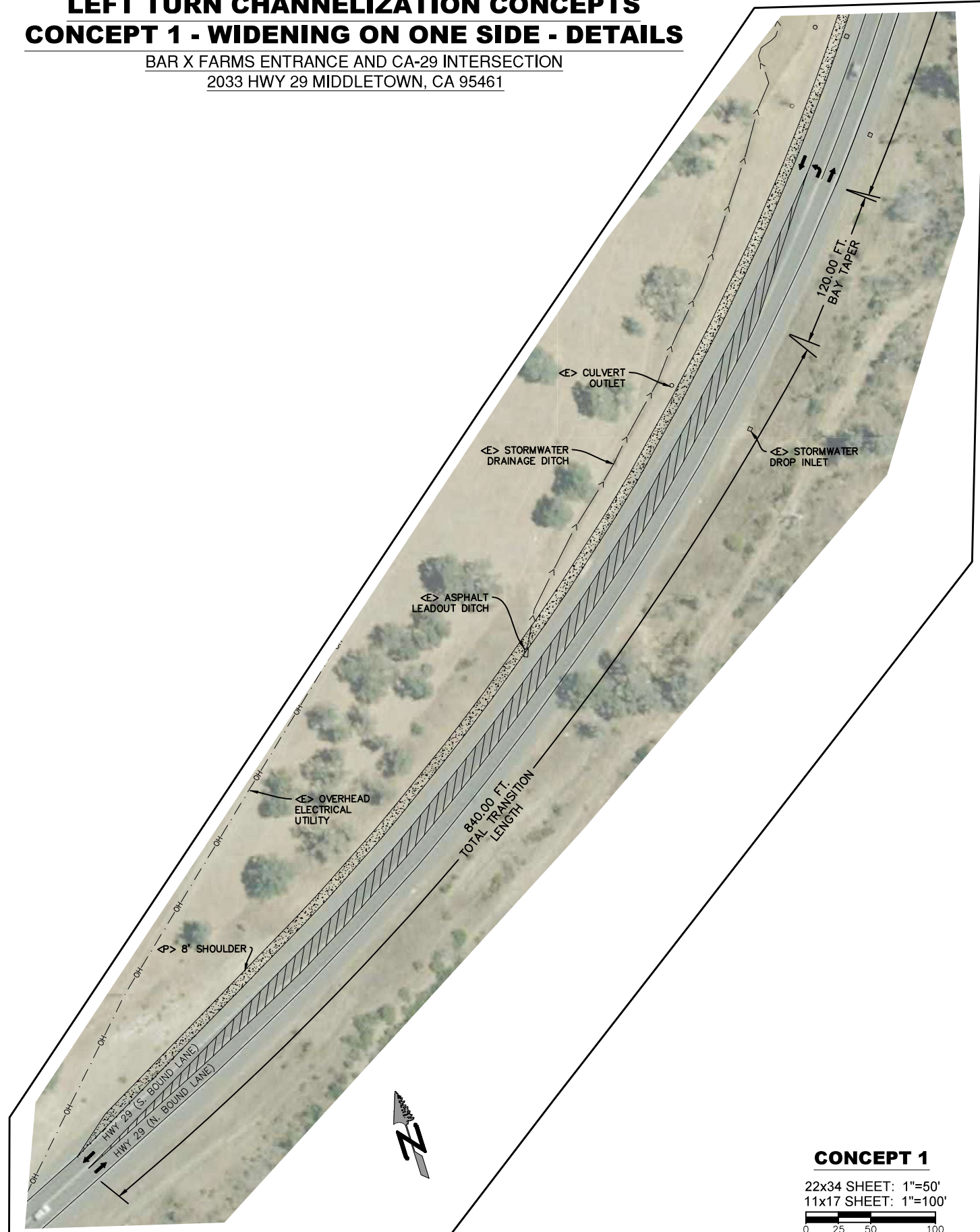
PROJ. MGR.: AD
DRAWN BY: DDR
DATE: 12/14/2021
SCALE: AS SHOWN

SHEET
C1
21-028

December 14, 2021 - 12:56 Desi Name: P:\BAR x Farms - Bar X Ranch - 21-028\CAD\210913 - Bar X Farms - TURN LANE CONCEPT.dwg Updated By: CherylReilly

BAR X RANCH LEFT TURN CHANNELIZATION CONCEPTS CONCEPT 1 - WIDENING ON ONE SIDE - DETAILS

BAR X FARMS ENTRANCE AND CA-29 INTERSECTION
2033 HWY 29 MIDDLETOWN, CA 95461



DATE	DESCRIPTION
11/17/2021	REVISED EMPLOYEE PARKING AREA
12/12/2021	REVISED EMPLOYEE PARKING SPACES & BUILDING
12/17/2021	REVISED EMPLOYEE PARKING AREA

NORTHPOINT
CONSULTING GROUP, INC.
1117 Samoa Blvd., Arcata, CA 95521

BAR X RANCH - LEFT TURN CHANNELIZATION CONCEPTS
20333 HWY 29 MIDDLETOWN, CA 95461
CONCEPT 1 - WIDENING ON ONE SIDE - DETAILS

PROJ. MGR:	AD
DRAWN BY:	DDR
DATE:	12/14/2021
SCALE:	AS SHOWN
SHEET	C2

BAR X RANCH

LEFT TURN CHANNELIZATION CONCEPTS

CONCEPT 2 - WIDENING ON BOTH SIDES

BAR X FARMS ENTRANCE AND CA-29 INTERSECTION
2033 HWY 29 MIDDLETOWN, CA 95461

CONCEPT 2

22x34 SHEET: 1"=100'
11x17 SHEET: 1"=200'



0 50 100 200



December 14, 2021 - 12:56 Desi Name: P:\BAR X Farms - Bar X Ranch - 21-028\CAD\210913 - Bar X Farms - TURN LANE CONCEPT.dwg Updated By: DerekBoyle

DATE	DESCRIPTION
11/17/2021	REVISED EMPLOYEE PARKING AREA
12/12/2021	REVISED EMPLOYEE PARKING SPACES & BUILDING
12/14/2021	REVISED EMPLOYEE PARKING AREA

NORTHPOINT
CONSULTING GROUP, INC.
1117 Samoa Blvd., Arcata, CA 95521

BAR X RANCH - LEFT TURN CHANNELIZATION CONCEPTS
20333 HWY 29 MIDDLETOWN, CA 95461
CONCEPT 2 - WIDENING ON BOTH SIDES

PROJ. MGR: AD
DRAWN BY: DDR
DATE: 12/14/2021
SCALE: AS SHOWN

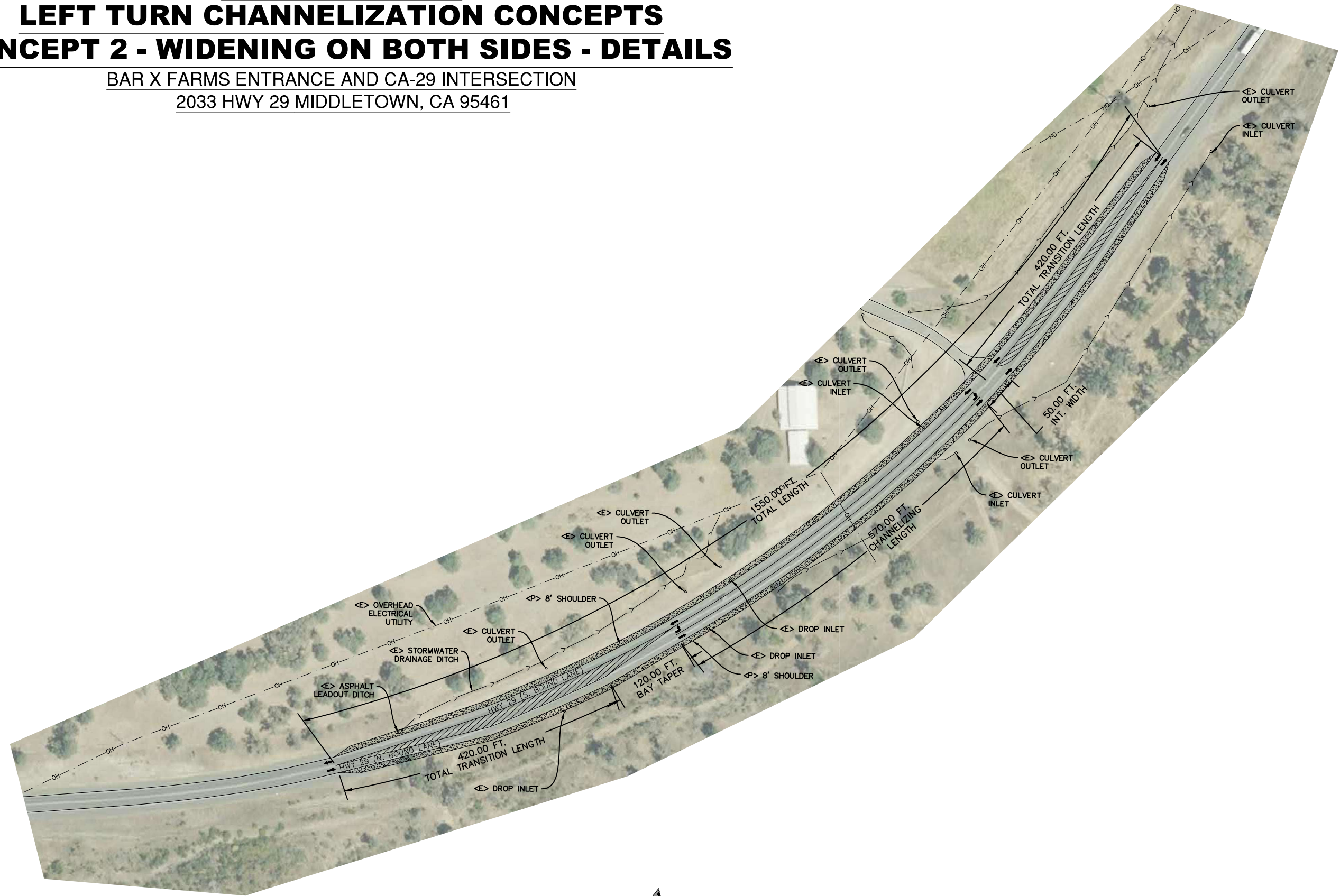
SHEET
C3
21-028

BAR X RANCH

LEFT TURN CHANNELIZATION CONCEPTS

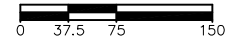
CONCEPT 2 - WIDENING ON BOTH SIDES - DETAILS

BAR X FARMS ENTRANCE AND CA-29 INTERSECTION
2033 HWY 29 MIDDLETOWN, CA 95461



CONCEPT 2

22x34 SHEET: 1"=75'
11x17 SHEET: 1"=150'



DATE	DESCRIPTION
11/17/2021	REVISED EMPLOYEE PARKING AREA
12/9/2021	REVISED EMPLOYEE PARKING SPACES & BUILDING
12/14/2021	REVISED EMPLOYEE PARKING AREA

NORTHPOINT
CONSULTING GROUP, INC.
1117 Samoa Blvd., Arcata, CA 95521

BAR X RANCH - LEFT TURN CHANNELIZATION CONCEPTS
20333 HWY 29 MIDDLETOWN, CA 95461
CONCEPT 2 - WIDENING ON BOTH SIDES - DETAILS

PROJ. MGR.: AD
DRAWN BY: DDR
DATE: 12/14/2021
SCALE: AS SHOWN

SHEET
C4

December 14, 2021 - 12:56 Desi Nome: P:\BAR x Farms - Bar X Ranch - 21-028\CAD\210913 - Bar X Farms - TURN LANE CONCEPT.dwg Updated By: barak@npti.com