

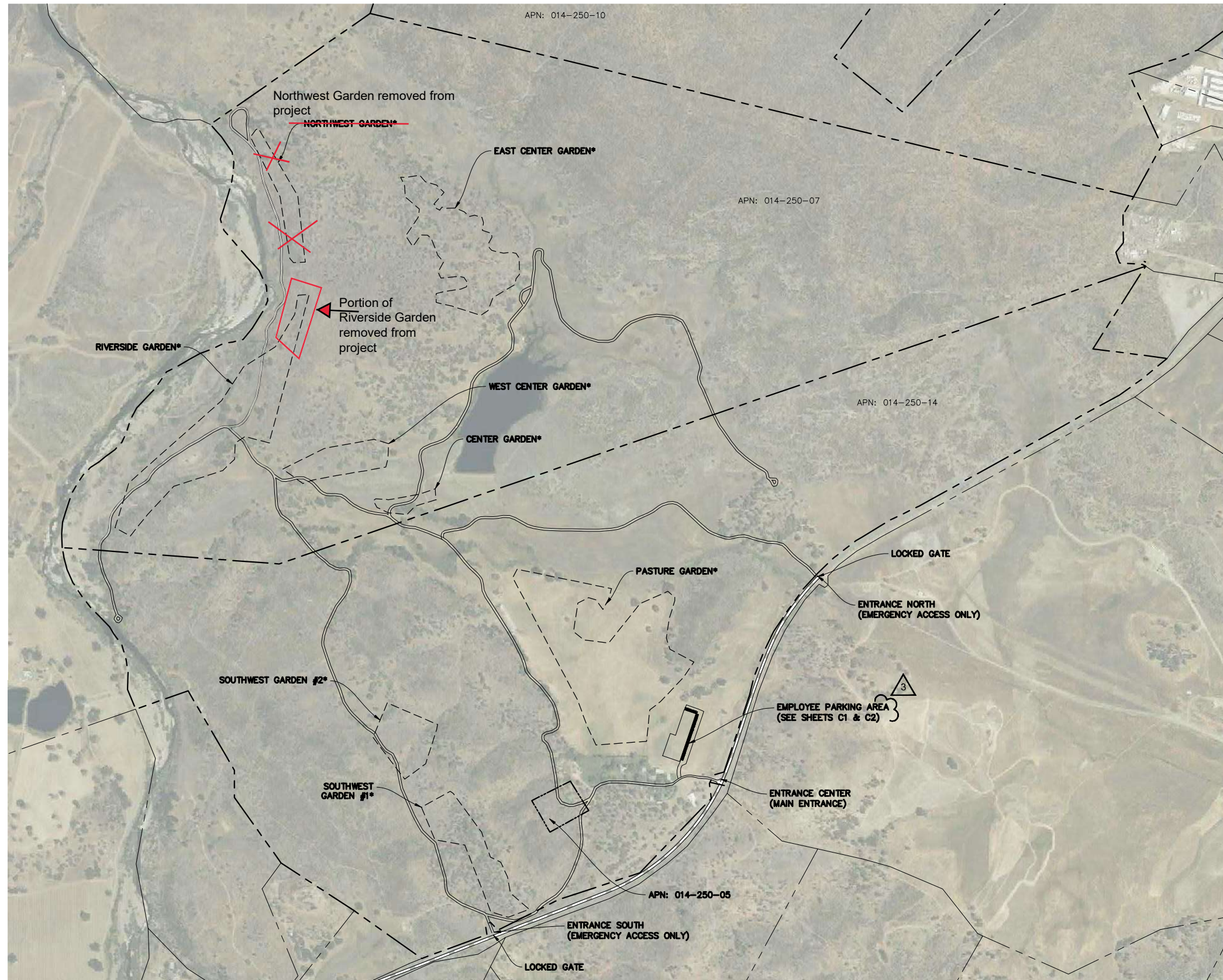
# BAR X RANCH

## ON-SITE PARKING & TRAFFIC CIRCULATION

20333 HWY 29 MIDDLETOWN, CA 95461

### EXISTING SITE PLAN

22x34 SHEET: 1"=500'  
11x17 SHEET: 1"=1000'



DATE	DESCRIPTION
11/17/2021	REVISED EMPLOYEE PARKING AREA
12/14/2021	REVISED EMPLOYEE PARKING SPACES
12/14/2021	REVISED EMPLOYEE PARKING AREA

**NORTHPOINT CONSULTING GROUP, INC.**  
1117 Samoa Blvd., Arcata, CA 95521

BAR X RANCH - ON-SITE PARKING & TRAFFIC CIRCULATION  
20333 HWY 29 MIDDLETOWN, CA 95461  
ON-SITE PARKING & TRAFFIC CIRCULATION

PROJ. MGR: AD  
DRAWN BY: DDR  
DATE: 12/14/2021  
SCALE: AS SHOWN

SHEET  
**C0**

21-028

### NOTES:

\*APPROXIMATE GARDEN BOUNDARY

### SHEET INDEX:

- C0 - ON-SITE PARKING & TRAFFIC CIRCULATION
- C1 - ON-SITE PARKING - PHASE 1
- C2 - ON-SITE PARKING - PHASE 2

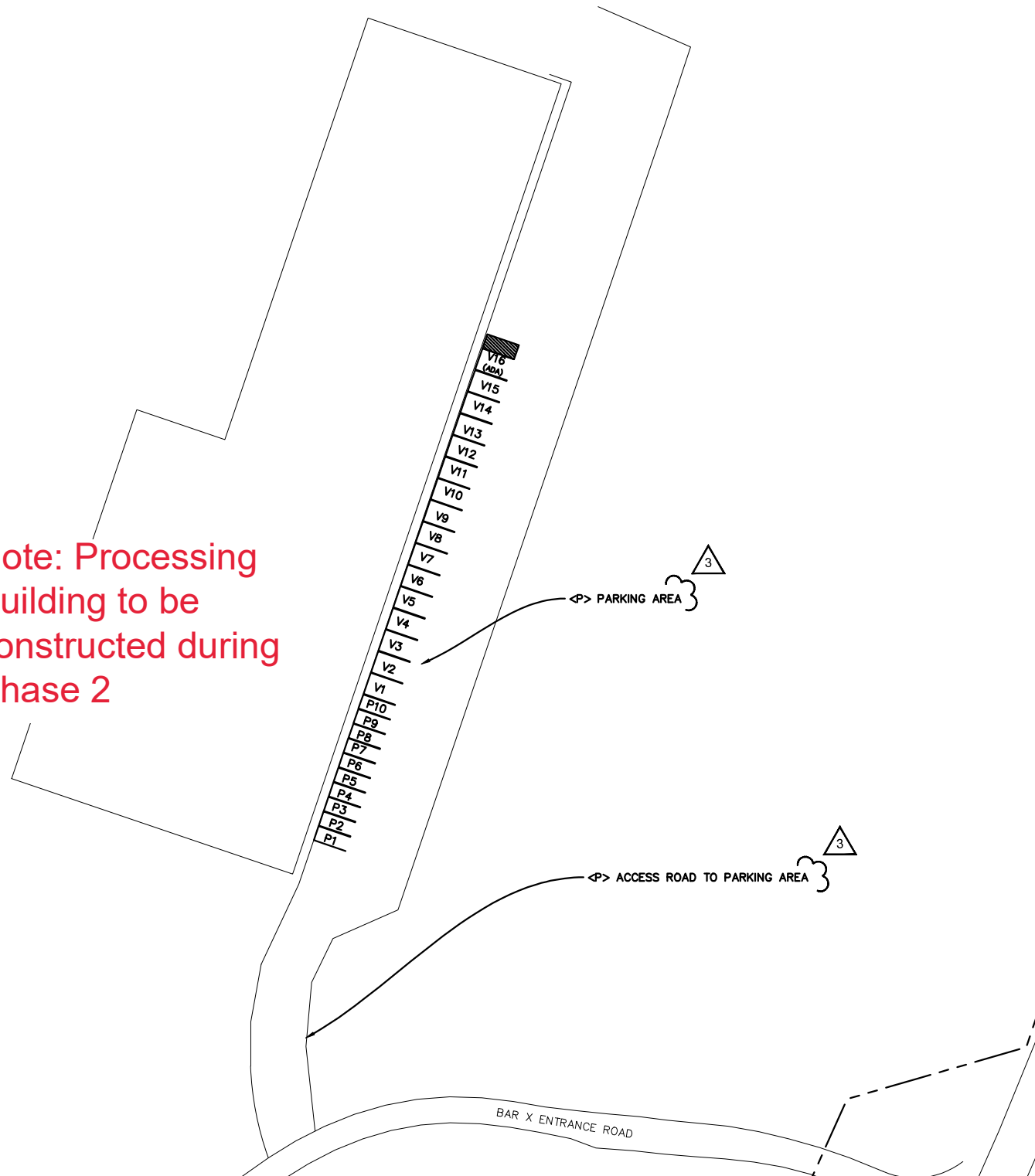
December 14, 2021, 12:41 PM  
 User: dan...  
 Project: Bar X Ranch - Bar X Forms - PARKING & INTERNAL TRAFFIC.dwg  
 Updated By: Daniel Reardon

# BAR X RANCH ON-SITE PARKING - PHASE 1

20333 HWY 29 MIDDLETOWN, CA 95461

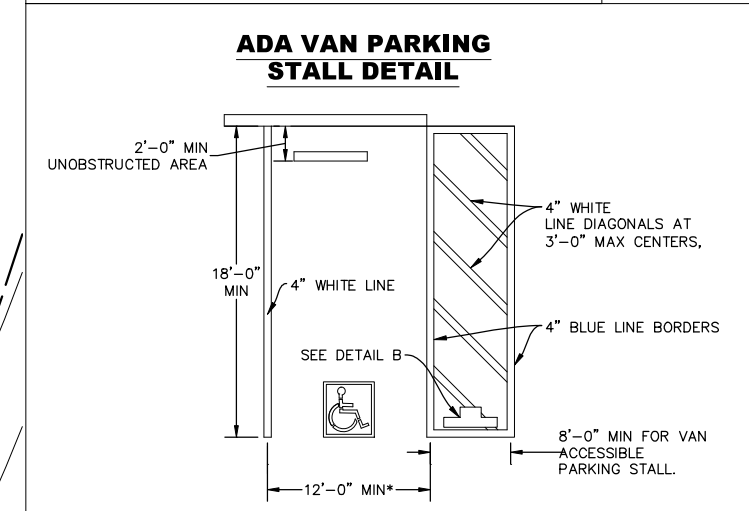
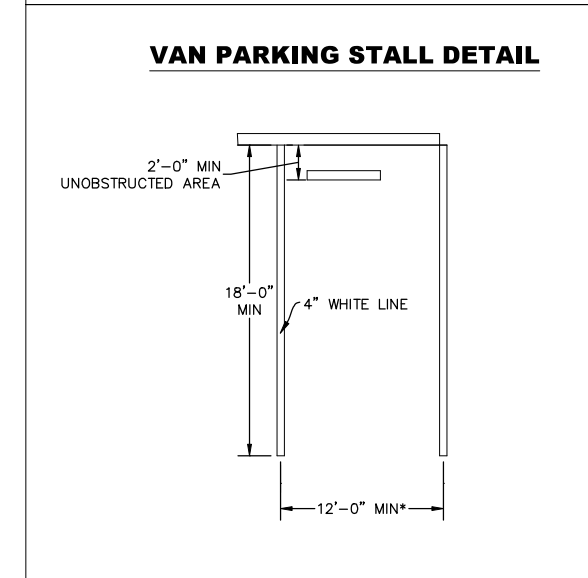
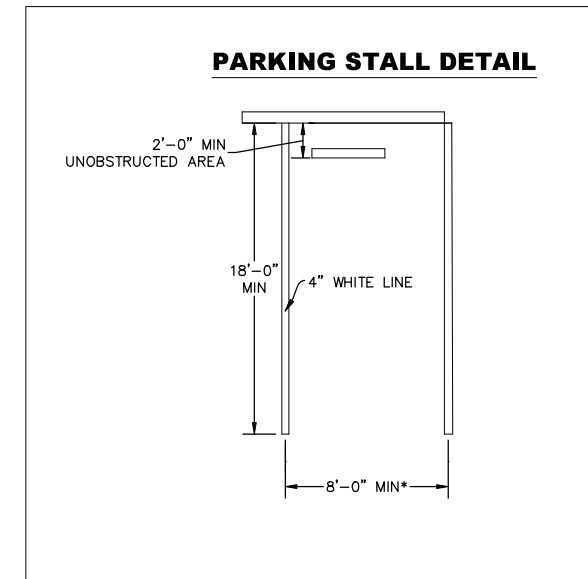
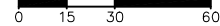
PARKING SUMMARY			
STALL TYPE			
	PARKING STALL (18'X8')	VAN PARKING STALL (18'X12')	ADA VAN PARKING STALL (18'X12' W/ LOADING ZONE)
PHASE 1	# PROVIDED 10	15	1
	TABLE P1 - P10	V1 - V15	V16 (ADA)

Note: Processing Building to be constructed during Phase 2



### PROPOSED SITE PLAN

22x34 SHEET: 1"=30'  
11x17 SHEET: 1"=60'



DATE	DESCRIPTION
11/17/2021	REVISED EMPLOYEE PARKING AREA
12/14/2021	REVISED EMPLOYEE PARKING SPACES
12/14/2021	REVISED EMPLOYEE PARKING AREA

**NORTHPOINT**  
CONSULTING GROUP, INC.  
1117 Samoa Blvd., Arcata, CA 95521

BAR X RANCH - ON-SITE PARKING & TRAFFIC CIRCULATION  
20333 HWY 29 MIDDLETOWN, CA 95461  
ON-SITE PARKING - PHASE 1

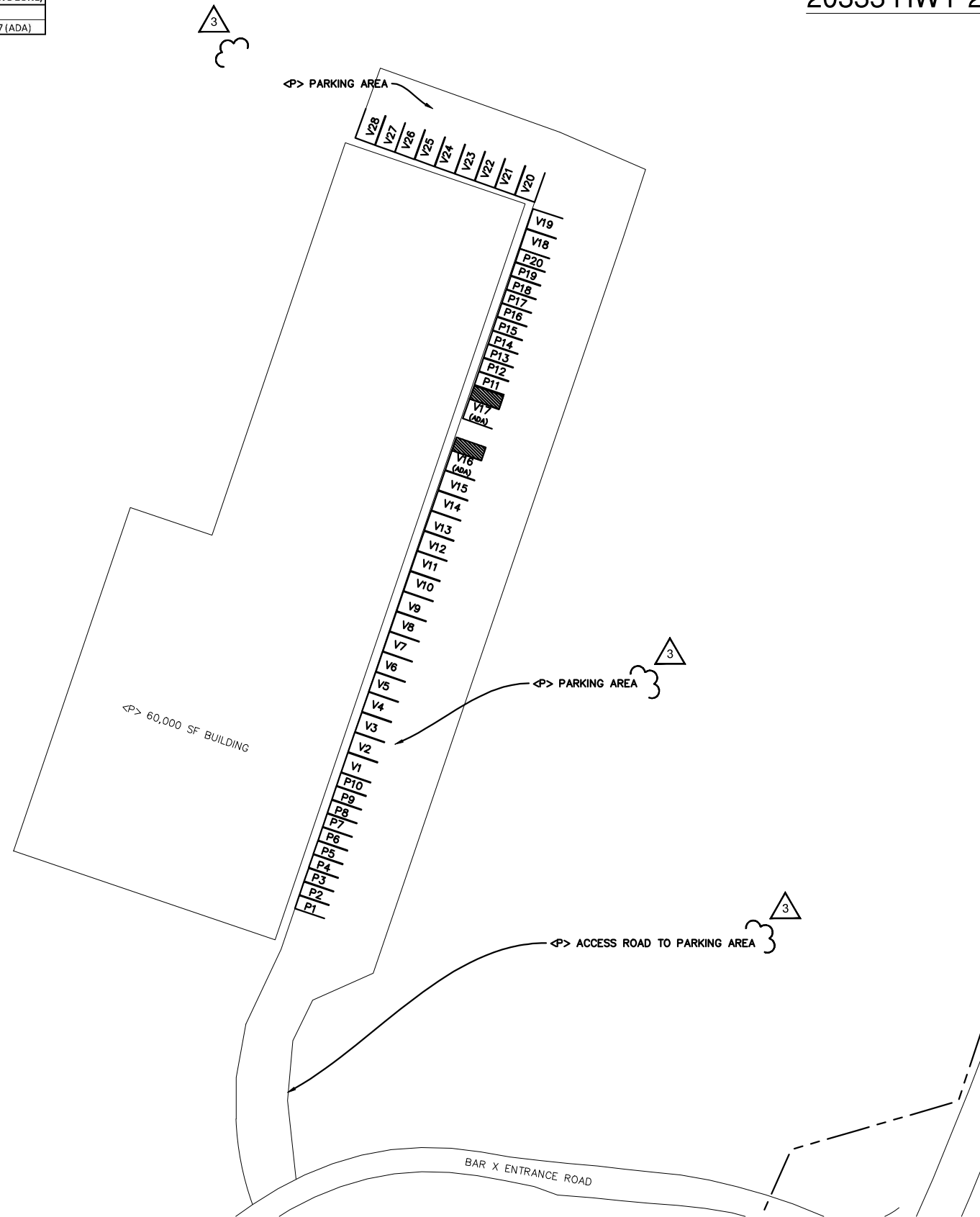
PROJ. MGR.: AD  
DRAWN BY: DDR  
DATE: 12/14/2021  
SCALE: AS SHOWN  
SHEET  
**C1**  
21-028

December 14, 2021 - 12:41: Dan Neme, p:\bar x forms - bar x ranch - 21-028\CAD\210227 - Bar X Forms - PARKING & INTERNAL TRAFFIC.dwg, Updated By: DanielKeele

# BAR X RANCH ON-SITE PARKING - PHASE 2

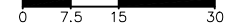
20333 HWY 29 MIDDLETOWN, CA 95461

PARKING SUMMARY				
STALL TYPE				
	PARKING STALL (18'X8')	VAN PARKING STALL (18'X12')	ADA VAN PARKING STALL (18'X12' W/ LOADING ZONE)	
PHASE 2	# PROVIDED	20	26	2
	TABLE	P1 - P20	V1 - V15 & V18 - V28	V16(ADA) & V17(ADA)

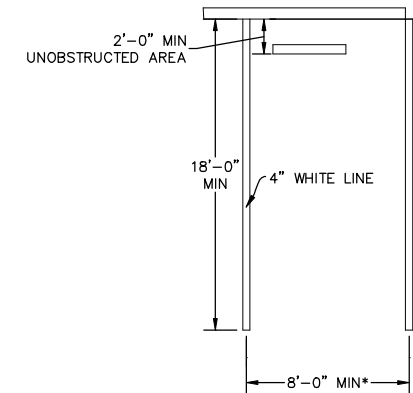


### PROPOSED SITE PLAN

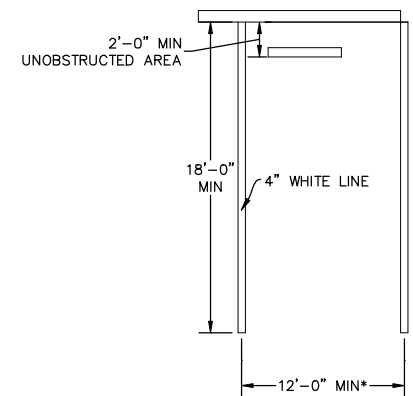
22x34 SHEET: 1"=15'  
11x17 SHEET: 1"=30'



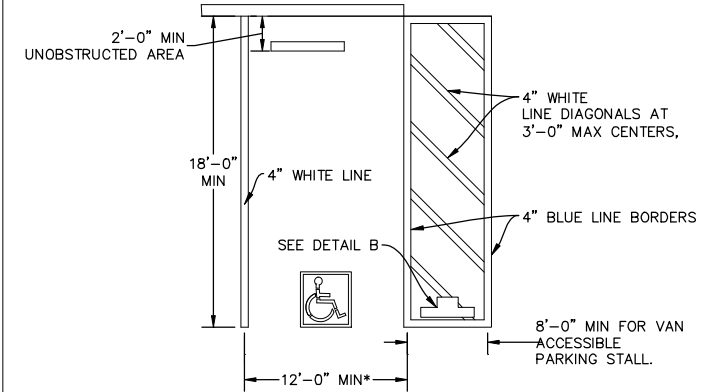
### PARKING STALL DETAIL



### VAN PARKING STALL DETAIL



### ADA VAN PARKING STALL DETAIL



DATE	DESCRIPTION
11/17/2021	REVISED EMPLOYEE PARKING AREA
12/14/2021	REVISED EMPLOYEE PARKING SPACES
12/14/2021	REVISED EMPLOYEE PARKING AREA

**NORTHPOINT**  
CONSULTING GROUP, INC.  
1117 Samoa Blvd., Arcata, CA 95521

BAR X RANCH - ON-SITE PARKING & TRAFFIC CIRCULATION  
20333 HWY 29 MIDDLETOWN, CA 95461  
ON-SITE PARKING - PHASE 2

PROJ. MGR:	AD
DRAWN BY:	DDR
DATE:	12/14/2021
SCALE:	AS SHOWN
SHEET	C2
21-028	

December 14, 2021 - 12:41: Dan Nemer, p:\bar x forms - bar x ranch - 21-028\CAD\210227 - Bar X Forms - PARKING & INTERNAL TRAFFIC.dwg, Updated: Bx, DanielRealle