

NOISE STUDY

PROPOSED WINERY ELLA'S VINEYARD 8790 HIGHWAY 41 CRESTON, SAN LUIS OBISPO COUNTY, CALIFORNIA

Project No. 2002-5551

Prepared for:

Ella's Vineyard
8790 East Highway 41
Creston, California, 93432

Prepared by:

Padre Associates, Inc.
369 Pacific Street
San Luis Obispo, California 93401

SEPTEMBER 2020



TABLE OF CONTENTS

1.0 INTRODUCTION.....	1-1
1.1 PROPOSED PROJECT DESCRIPTION	1-1
1.2 PURPOSE.....	1-1
1.3 SITE DESCRIPTION.....	1-1
2.0 NOISE	2-1
3.0 NOISE MONITORING ACTIVITIES.....	3-3
3.1 20-MINUTE AMBIENT NOISE LEVEL MONITORING AND TRAFFIC COUNTS.....	3-3
4.0 NOISE MONITORING RESULTS.....	4-1
4.1 20-MINUTE AMBIENT NOISE LEVEL MONITORING RESULTS	4-1
4.2 TRAFFIC COUNTS	4-1
4.3 SUMMARY OF NOISE MONITORING AND TRAFFIC COUNTS	4-1
5.0 SAN LUIS OBISPO COUNTY NOISE ORDINANCE ANALYSIS	5-1
5.1 SAN LUIS OBISPO COUNTY NOISE ORDINANCE	5-1
5.1.1 Noise Standard 22.10.120 Subsection B - Exterior Noise Level Standards	5-1
5.1.2 Noise Standard 22.10.120 Subsection B - Noise Level Measurement	5-1
5.1.3 Agricultural Processing Uses 22.30.070 Section D, Subsection 2 Wineries.....	5-2
5.2 COUNTY REQUEST.....	5-2
6.0 TRAFFIC NOISE MODELING	6-1
7.0 PROPOSED SPEAKER NOISE MODELING.....	7-5
8.0 SUMMARY, CONCLUSIONS AND RECOMENDATIONS.....	8-4
8.1 SUMMARY	8-4
8.2 CONCLUSIONS.....	8-4
8.3 RECOMENDATIONS.....	8-5
9.0 REFERENCES.....	9-1

LIST OF TABLES

Table 2-1. Common Sound Levels/Sources and Subjective Human Responses	2-1
Table 4-1. Summary of 20-Minute Ambient Noise Level Monitoring Results.....	4-1
Table 4-2. Summary of Traffic Counts	4-1
Table 5-1. Maximum Allowable Noise Exposure from Stationary Sources	5-1
Table 6-1. Summary of Modeled Traffic Noise	6-1
Table 7-1. Summary of Modeled Speaker Noise Levels.....	7-5

LIST OF FIGURES

Figure 1-1. Project Location Map	1-2
Figure 1-2. Project Site Map with Noise Monitoring Locations and Residential Receptors	1-3
Figure 6-1. Noise Contours for Typical Daytime Traffic Levels.....	6-3
Figure 6-2. Noise Contours for Typical Nighttime Traffic Levels.....	6-4
Figure 7-1 Noise Contours for Proposed Exterior Speaker at a Sound Power Level of 130 db	7-1
Figure 7-2 Noise Contours for Proposed Exterior Speaker at a Sound Power Level of 120 db	7-2
Figure 7-3 Noise Contours for Proposed Exterior Speaker at a Sound Power Level of 110 db	7-3

LIST OF APPENDICES

Appendix A:	Noise Meter Calibration and Monitoring Forms
Appendix B:	Noise Model Input and Output Data
Appendix C:	Proposed Speaker Specifications

1.0 INTRODUCTION

This Noise Study has been prepared by Padre Associates, Inc. (Padre) for Ella's Vineyard for the proposed use of exterior amplified music between 2:00 PM and 8:00 PM, located at Assessor's Parcel Number 035-111-022, 8790 East Highway 41, Creston, San Luis Obispo County, California (Project Site) (Figures 1-1 and 1-2).

1.1 PROPOSED PROJECT DESCRIPTION

Ella's Vineyard proposes to construct a winery that will consist of a prefabricated metal single story structure with wooden cladding, non-paved vehicle parking areas¹, loading area, minor landscaping, a wooden trellis, non-paved foot paths and exterior recreation areas. The proposed winery operations would consist of wine production, storage, wine tasting and the hosting of private events. The private events are proposed to include amplified live or recorded music primarily within the structure and to a limited extent outside the northern side of the structure. The private events are proposed to take place year-round Friday through Sunday between the hours of 2:00 PM and 10 PM. Speakers similar to the JBL EON615 1000-Watt Portable PA Speakers are proposed to be used for the interior and exterior music². During the proposed private events, two speakers would be setup within the structure for dancing and one speaker would be setup outside the northern side of the structure for speeches and lower volume background music. The music may consist of recorded music playback and/or live music. The proposed schedule for use of amplified music is:

- Interior amplified music between the hours of 2:00 PM and 10:00 PM, and
- Exterior amplified music between the hours of 2:00 PM and 8:00 PM.

1.2 PURPOSE

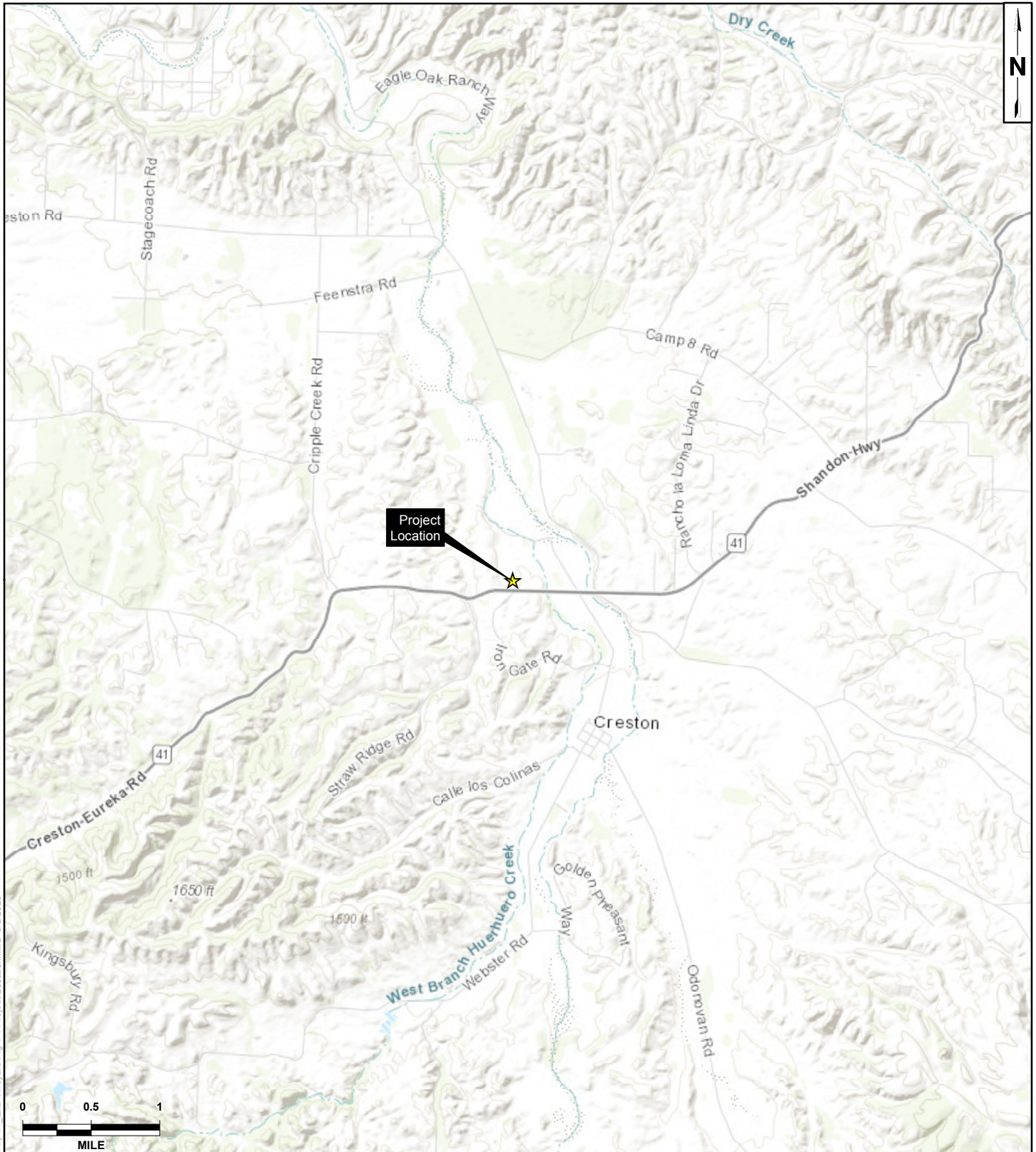
The purpose of the Noise Study is to determine the existing baseline/ambient noise impacts at the Project Site and to model potential noise levels associated with exterior music at the proposed private events as requested by the County of San Luis Obispo (County). In addition, the Noise Study provides an analysis of the County Ordinance noise standards in comparison to the potential noise impact of the proposed exterior music.

1.3 SITE DESCRIPTION

The Project Site is an agricultural/residential property within San Luis Obispo County near the town of Creston. The property currently contains a single-family residential building, storage buildings and vineyards. The Project site is bordered by the State Highway 41 (HWY 41) to the south and agricultural land to north, east, and west. The closest residence to the area of the Proposed Project is located approximately 980 feet to the southwest (Refer to Plate 1-2).

¹ Maximum of 150 vehicle parking capacity.

² Speakers typically provided by DJs or event clients.



LEGEND:

- ★ Project Location

MAP EXTENT:



Source: Esri Online Topo Basemap
 Coordinate System: NAD 1983 StatePlane California V FIPS 0405 Feet
 This map was created for informational and display purposes only.



PROJECT NAME: NOISE STUDY PROPOSED WINERY, ELLA'S VINEYARD SAN LUIS OBISPO COUNTY, CA	
PROJECT NUMBER: 2002-5551	DATE: September 2020

PROJECT LOCATION

FIGURE
1-1

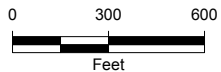
Z:\GIS\Projects\GIS_Maps\Map Project\0790_E_Vineyard\Fig 1-1 Project Location.mxd 9/3/2020



LEGEND:

- Closest Residential Receptor
- Receiver Location
- Residential Receptor Location
- Receiver and Noise Monitoring Location
- Proposed Winery Production and Wine Tasting Facility
- Assessor Parcel Boundary

Source: Data Sources
 Coordinate System: NAD 1983 StatePlane California V FIPS 0405 Feet
 Notes: This map was created for informational and display purposes only.



PROJECT NAME: NOISE STUDY	
PROPOSED WINERY, ELLA'S VINEYARD SAN LUIS OBISPO COUNTY, CA	
PROJECT NUMBER: 2002-5551	DATE: September 2020

**PROJECT SITE MAP WITH
NOISE MONITORING LOCATIONS AND
NEARBY RESIDENTIAL RECEPTORS**

**FIGURE
1-2**

Z:\GIS\Projects\GIS\Map\Project\8790_E_Vineyard\41_Highway\41_Vineyard\Fig 1-2 Project Site Map with Noise Monitoring Locations.mxd 9/3/2020

2.0 NOISE

Noise is generally defined as unwanted or objectionable sound. The definition of sound is a variation of pressure in the air that can be detected by the human ear. When these pressure variations or pressure waves occur at frequencies between approximately 20 Hertz (Hz) - 20 Kilohertz (kHz) they can be detected by the human ear. When related to a reference pressure on an arithmetic scale this wide range of sound pressures produce numbers of awkward size, therefore sound pressure levels are expressed on a (1, 10, 100...) ratio logarithmic scale in decibels (dB). The quietest sound within the 20 Hz to 20 kHz frequency range that an average human ear can detect has a pressure of approximately 20 micro Pascals (μPa), this pressure is commonly used as the reference pressure, therefore this sound level is assigned the value of 0 dB. Higher intensity sound is perceived by the human ear as louder. Sound intensity is commonly measured on a weighted scale to correct for the relative frequency response of the human ear. The "A-weighted" noise level de-emphasizes low and very high frequencies of sound in a manner similar to the human ear's de-emphasis of these frequencies. Table 2-1 includes common sound levels/sources and subjective human responses.

Table 2-1. Common Sound Levels/Sources and Subjective Human Responses

Sound Level (dBA)	Typical Outdoor Noise Source	Typical Indoor Noise Sources	Typical Human Response/Effects
140	Carrier Jet takeoff (50 ft [15.2 m])	--	--Threshold for Pain-
130	Siren (100 ft [30.5 m]) Live Rock Band	--	---Hearing Damage-
120	Jet takeoff (200 ft [61.0 m]) Auto horn (3 ft [0.9 m])	--	--
110	Chain Saw Snow Mobile	--	---Deafening---
100	Lawn Mower (3 ft [0.9 m]) Motorcycle (50 ft [15.2 m])	--	--
90	Heavy Duty Truck (50 ft [15.2 m])	Food Blender (3 ft [0.9 m])	---Very Loud---
80	Busy Urban Street, Daytime	Garbage Disposal (3 ft [0.9 m])	
70	Automobile (50 ft [15.2 m])	Vacuum Cleaner (9 ft [2.7 m])	---Loud---
60	Small plane at 0.75 mi (1.2 km)	Conversation (3 ft [0.9 m])	
50	Quiet Residential Daytime	Dishwasher Rinse (10 ft [3.0 m])	---Moderate---
40	Quiet Residential Nighttime	Quiet Home Indoors	---Quiet---
30	Slight Rustling of Leaves	Soft Whisper (15 ft [4.6 m])	---Very Quiet---
20	--	Broadcasting Studio	
10	--	Breathing	--Barely Audible--
0	--	--	--Threshold of Hearing--

Source: American Industrial Hygiene Association (AIHG), 2003

When considering how noise could affect nearby sensitive receptors (residential dwellings, transient lodging, hospitals and other long-term care facilities, public or private educational facilities, libraries, churches, and places of public assembly), it is important to understand how sound level diminishes as distance from the source increases. For a "point" source (such as music from an outdoor concert) of sound in free space, the rate at which the sound attenuates is inversely proportional to the square of the distance from the source. This means the sound level would drop 6 dB each time the distance from the source is doubled.

3.0 NOISE MONITORING ACTIVITIES

3.1 20-MINUTE AMBIENT NOISE LEVEL MONITORING AND TRAFFIC COUNTS

Ambient noise level monitoring was conducted by Padre at three onsite locations and one offsite location (refer to Figure 1-2). The definition of ambient noise for the purposes of this study is typical background noise at an exterior location. The three onsite monitoring locations Monitor-1, Monitor-2 and Monitor-3 were located at the northern, eastern, and western property lines, respectively. The offsite monitoring location Monitor-4 was located along HWY 41 near the adjacent property to the south of the Project Site. Noise level monitoring was conducted on August 13, 2020 at each of the four monitoring locations for approximate 20-minute intervals using a calibrated tripod mounted Larson Davis SoundTrack LXT Type 1 noise level meter set at a height of approximately five feet.

Padre conducted visual counts of vehicular traffic on HWY 41 during the 20-minute ambient noise level monitoring at monitoring locations Monitor-2, Monitor-3 and Monitor-4. HWY 41 was not visible from monitoring location Monitor-1, so traffic was not counted during the ambient noise level monitoring event at this location.

4.0 NOISE MONITORING RESULTS

4.1 20-MINUTE AMBIENT NOISE LEVEL MONITORING RESULTS

The results of the 20-minute ambient noise level monitoring are summarized in Table 4-1 by the noise level equivalent to the total sound energy measured over a stated period of time (L_{eq}) and the maximum, instantaneous noise level experienced during a given period of time (L_{max}). Copies of noise meter calibration and field monitoring forms are provided in Appendix A.

Table 4-1. Summary of 20-Minute Ambient Noise Level Monitoring Results

Monitoring Location	Date	Start Time	End Time	L_{eq} (dBA)	L_{max} (dBA)
Monitor-1	8/13/2020	13:15	13:35	41.0	58.4
Monitor-2	8/13/2020	13:50	14:10	39.2	55.0
Monitor-3	8/13/2020	14:40	15:00	40.5	58.3
Monitor-4*	8/13/2020	15:20	15:40	68.8	90.6
Daytime Onsite Average L_{eq}:				40.2	--

Notes: dBA – A-weighted decibels.

* – Offsite monitoring location located along HWY 41.

Weather conditions during the 20-minute ambient noise level monitoring were cloudy with temperatures ranging from 65 degrees Fahrenheit (°F) to 70 °F with light intermittent rain and light and variable winds. Noise sources observed during the course of ambient noise level monitoring at noise monitoring locations 1, 2, 3 and 4 included traffic on HWY 41, and airplanes flying overhead, and birds chirping. Traffic on HWY 41 appeared to be the primary noise source at monitoring location 2, 3 and 4, to a lesser extent at monitoring location 1.

4.2 TRAFFIC COUNTS

The results of the traffic counts are summarized in Table 4-2. It should be noted that the survey was conducted during the 2020 Corona Virus Pandemic; therefore, traffic volumes on HWY 41 and local surface streets may be lower than normal.

Table 4-2. Summary of Traffic Counts

Monitoring Location	Cars	Light Duty	Heavy Duty	Motorcycles	Total
Monitor-1	--	--	--	--	--
Monitor-2	49	--	2	--	51
Monitor-3	55	--	1	1	57
Monitor-4	51	--	--	--	51

4.3 SUMMARY OF NOISE MONITORING AND TRAFFIC COUNTS

The results of the ambient noise level monitoring event indicate that the average daytime ambient noise level at the property boundaries of the Project site is approximately 40.2 L_{eq} dbA and 57.2 L_{max} dbA. Day time ambient noise levels along HWY 41 were measured to be 68.9 L_{eq} dbA and 90.6 L_{max} dbA. The traffic levels indicated that at the time of the traffic count was approximately 160 vehicles passing the Project Site during each daytime hour. Based on these results traffic on HWY 41 appears to be the primary source of ambient noise at the Project Site and the average

ambient noise level indicated at the Project Site boundary is considered to be the typical daytime ambient noise levels at the Project Site.

5.0 SAN LUIS OBISPO COUNTY NOISE ORDINANCE ANALYSIS

5.1 SAN LUIS OBISPO COUNTY NOISE ORDINANCE

The County Ordinance Noise Standard and Agricultural Processing Uses Standards (Ordinance) establishes noise standards to control unnecessary, excessive and nuisance noise within the County's jurisdiction. The discussion below contains the portions of the Ordinance which are relevant to the Project:

5.1.1 Noise Standard 22.10.120 Subsection B - Exterior Noise Level Standards

Exterior noise level standards are applicable when a land use affected by noise is one of the following noise-sensitive uses: residential uses listed in Section 22.06.030 (Allowable Land Uses and Permit Requirements), except for residential accessory uses and temporary dwellings; health care services (hospitals and similar establishments only); hotels and motels; bed and breakfast facilities; schools (pre-school to secondary, college and university, specialized education and training); churches; libraries and museums; public assembly and entertainment; offices, and outdoor sports and recreation

1. No person shall create any noise or allow the creation of any noise at any location within the unincorporated areas of the county on property owned, leased, occupied or otherwise controlled by the person which causes the exterior noise level when measured at any of the preceding noise-sensitive land uses situated in either the incorporated or unincorporated areas to exceed the noise level standards in the Table 5-1. When the receiving noise-sensitive land use is outdoor sports and recreation, the following noise level standards shall be increased by 10 dB.

Table 5-1. Maximum Allowable Noise Exposure from Stationary Sources

	7 a.m. to 10 p.m.	10 p.m. to 7 a.m.
Hourly Leq, dB	50	45
Maximum level, dB	70	65

Source: County, 2020

2. In the event the measured ambient noise level exceeds the applicable exterior noise level standard in Table 5-1, the applicable standard shall be adjusted so as to equal the ambient noise level plus one dB;
3. Each of the exterior noise level standards specified in Table 5-1 shall be reduced by five dB for simple tone noises, noises consisting primarily of speech or music, or for recurring impulsive noises; and
4. If the intruding noise source is continuous and cannot reasonably be discontinued or stopped for a time period whereby the ambient noise level can be measured, the noise level measured while the source is in operation shall be compared directly to the exterior noise level standards.

5.1.2 Noise Standard 22.10.120 Subsection B - Noise Level Measurement

For the purpose of evaluating conformance with the standards of this Chapter, noise levels shall be measured as follows:

1. Use of a meter. Any noise measurement in compliance with this Section shall be made with a sound level meter using the A-weighted network (scale). Calibration of the measurement equipment utilizing an acoustical calibrator shall be performed immediately prior to recording any noise data.
2. Measuring exterior noise levels. Except as otherwise provided in this Section, exterior noise levels shall be measured at the property line of the affected noise-sensitive land use listed in Subsection B. Where practical, the microphone shall be positioned five feet above the ground and away from reflective surfaces.

5.1.3 Agricultural Processing Uses 22.30.070 Section D, Subsection 2 Wineries

This section establishes a standard for Special Events at Wineries. In this section Special Events are defined as the following:

1. As any of the following events when there is the possibility that 50 people or more individuals will attend: concerts (with or without amplified sound), weddings, advertised events (including fund raising, but not including industry-wide events), and advertised winemaker dinners open to the general public. The definition does not include normal patronage of the tasting room or non-advertised events.

The section states that any special event proposing outdoor amplified music shall only be allowed from 10:00 a.m. to 5:00 p.m. No outside amplified sound shall occur before 10:00 a.m. or after 5:00 p.m. The standard relating to amplified music may only be waived or modified where a finding can be made by the Review Authority that the noise at the property line will not exceed 65 dB.

5.2 COUNTY REQUEST

In an email dated March 27, 2020 regarding the review of the Project application the County requested the following:

"Submit Noise Analysis to show noise contours for all locations of proposed outdoor amplified music. Show noise contours to all property lines and to the nearest off-site residences and the measured distances. Your application stated that you would like to participate in outdoor amplified music up to 8 PM. Ordinance states no outside amplified sound shall occur after 5 PM. The standard may be waived or modified where a finding can be made by the Review Authority that the noise at the property line will not exceed 65dB. This will require quantitative data to support the findings. Please submit a Noise Analysis."

6.0 TRAFFIC NOISE MODELING

Padre conducted a traffic related noise model using SoundPLANessential 5.0 (SPE-5). Padre obtained publicly available 2018 traffic data from traffic counts conducted by the California Department of Transportation (CalTrans) for HWY 41 in the area of the Project Site, aerial photographs, digital elevation data for the Project Site and surrounding area from Google Earth Pro, and local highway and street maps of the surrounding area from OpenStreetMap (OSM). Current building and proposed building locations for the Project Site were obtained from the client and current building locations for offsite structures in the area of the Project Site were obtained from OSM. The model was formatted to predict daytime and nighttime HWY 41 traffic noise levels at the Project Site and the surrounding area based on the traffic count data obtained from CalTrans and vehicle types observed during the traffic counts conducted by Padre. Four of the ambient noise level monitoring locations used during the ambient noise level monitoring activities and 10 additional offsite locations were used in the model as receiver locations. The results of the noise model at each receiver location are summarized in Table 6-1 below. Contour maps of the modeled daytime and nighttime traffic related noise levels and receiver locations are provided in Figures 6-1 and 6-2. Copies of the input and output data for the model are provided in Appendix B.

Table 6-1. Summary of Modeled Traffic Noise

Monitoring Location	Modeled Daytime Traffic Noise Levels (dBA)	Modeled Nighttime Traffic Noise Levels (dBA)
Monitor/Receiver-1	29.9	20.9
Monitor/Receiver-2	41.7	32.7
Monitor/Receiver-3	42.9	33.9
Monitor/Receiver-4	59.2	50.2
Receiver-5*	35.1	26.1
Receiver-6*	29.5	20.6
Receiver-7*	32.1	23.1
Receiver-8*	36.9	27.9
Receiver-9*	51.4	42.4
Receiver-10	36.8	27.8
Receiver-11*	29.5	20.5
Receiver-12	37.8	28.8
Receiver-13*	28.8	19.8
Receiver-14	22.6	13.7

Notes: * - Residential receptor locations.

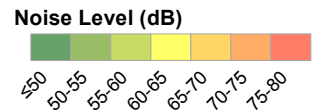
According to the traffic noise model results traffic related noise levels were predicted to attenuate to below approximately 40 dbA approximately 160 feet to 170 feet north of HWY 41 and 60 feet to 120 feet to the south of HWY 41 during the daytime (7:00 AM to 6:00 PM). Nighttime (6:00 PM to 7:00 AM) traffic noise levels were predicted to attenuated to below approximately 40 dbA approximately 20 feet to 25 feet to the north and south of HWY 41. The results of the model predicted that the traffic noise at the receiver locations (Monitor/Receiver-2 through Monitor/Receiver-4) were similar to the noise levels measured at the Project Site during the course of the noise monitoring event. The predicted noise level results were lower than the noise levels measured at Receiver-1, however it should be noted that the traffic noise model only predicted noise

levels generated from vehicle traffic on HWY 41. Receiver-1 is located along the northern property boundary at the base of a hill that slopes up to the south. There is no direct line of sight between Monitor/Receiver-1 and HWY 41. Due to steep slope between Receiver-1 and HWY 41 traffic related noise is partially blocked from Monitor/Receiver-1. The noise sources observed at Monitor/Receiver-1 during the course of the noise monitoring event were primarily from airplanes and birds, with some traffic related noise observed. Based on a comparison of the predicted daytime noise levels and the noise levels measured during the course of noise monitoring event, noise levels predicted in the modeled appear to accurately predict traffic noise levels at the Project Site. Traffic noise levels at the residential receptor receivers indicated in Table 6-1 were not indicated at noise levels above 40 dbA, with the exception of Receiver-9 which is located immediately adjacent to HWY 41.

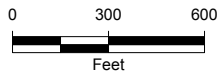


LEGEND:

- Closest Residential Receptor
- Receiver Location
- Residential Receptor Location
- Receiver and Noise Monitoring Location
- Proposed Winery Production and Wine Tasting Facility
- Assessor Parcel Boundary



Source: Esri Online Imagery Basemap
 Coordinate System: NAD 1983 StatePlane California V FIPS 0405 Feet
 Notes: This map was created for informational and display purposes only.



PROJECT NAME: NOISE STUDY	
PROPOSED WINERY, ELLA'S VINEYARD SAN LUIS OBISPO COUNTY, CA	
PROJECT NUMBER: 2002-5551	DATE: September 2020

NOISE CONTOURS FOR TYPICAL NIGHT TIME TRAFFIC LEVELS

FIGURE 6-2

Z:\GIS\Projects\GIS\Map\Project\8790_E_Ella_Vineyard\Fig 5-2 Noise Contours for Typical Night Time Traffic Levels.mxd 9/2/2020

7.0 PROPOSED SPEAKER NOISE MODELING

Padre conducted a noise model for the proposed exterior speaker using SPE-5. Aerial photographs and digital elevation data for the project site and surrounding area were obtained from Google Earth Pro and proposed speaker specifications were obtained from the manufacture. Current building and proposed building locations for the Project Site were obtained from the client and current building locations for offsite structures in the area of the Project Site were obtained from OSM. The model was formatted to predict exterior speaker noise levels at the Project Site and the surrounding area using the following formula:

Sound Pressure Level

$$L_p = L_w - 10 \times \log_{10}(A)$$

Where: L_p = Sound Pressure Level

L_w = Sound Power Level

A = The surface area at a given distance from the source from source.

The speaker proposed for exterior use has a maximum sound power level of approximately 130 dB³. Padre ran three models for the exterior use of the speaker at three different sound power levels. The first model used the maximum sound power of the speaker of approximately 130 db, the second used a sound power of approximately 120 db and the third model utilized a sound power of 110 db. For the purposes of the model the speaker was located on the northern central side of the proposed structure (refer to Figures 7-1, 7-2 and 7-3). Contour maps of the modeled noise levels and onsite receiver locations are provided in Table 7-1 and Figures 7-1, 7-2 and 7-3. Copies of the input and output data for the model are provided in Appendix B. Copies of the proposed speaker specifications are provided in Appendix C.

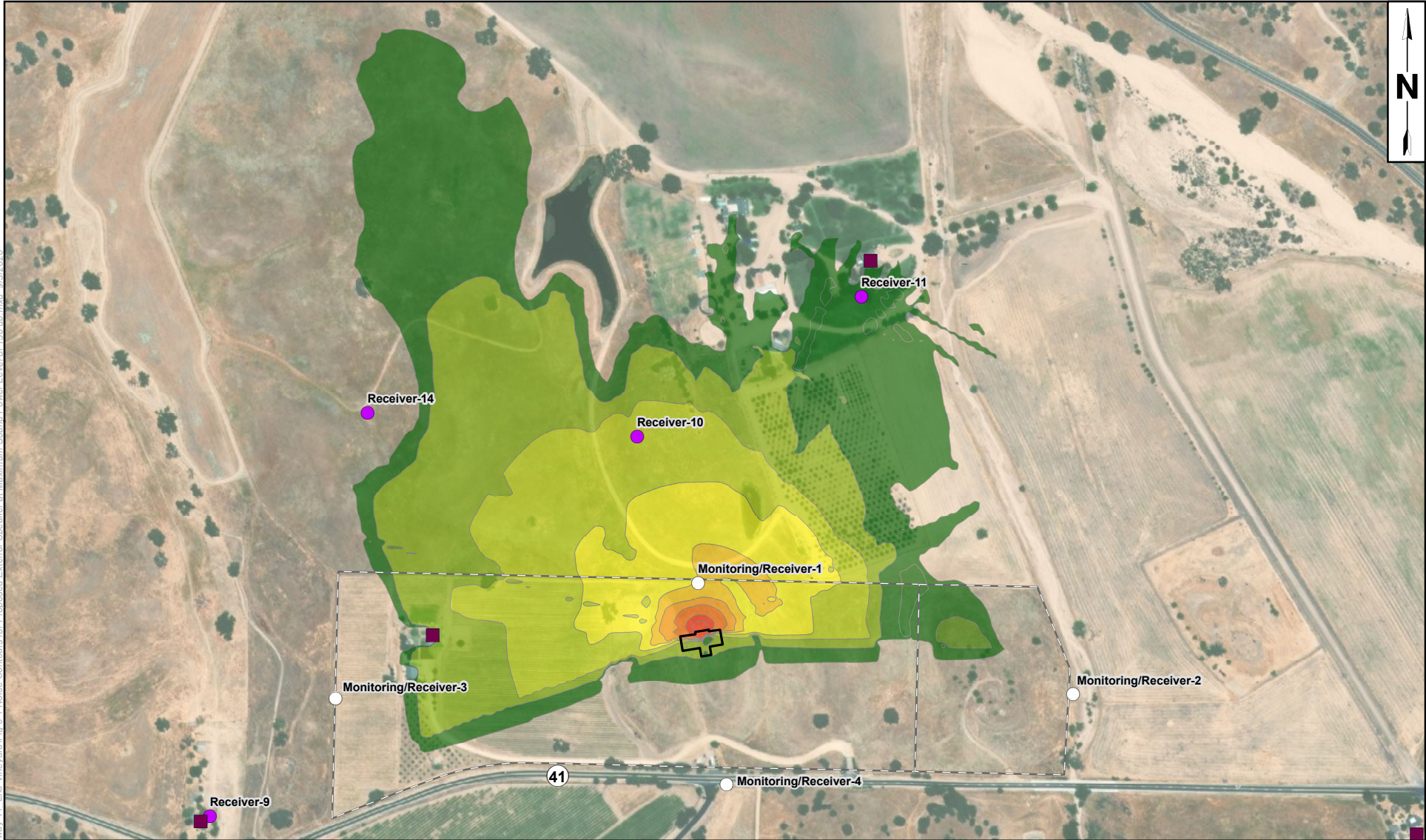
Table 7-1. Summary of Modeled Speaker Noise Levels

Monitoring Location	Modeled Noise Levels for Maximum Speaker Sound Power Level (dBA)	Modeled Noise Levels for Speaker Sound Power Level of 120 db (dBA)	Modeled Noise Levels for Speaker Sound Power Level of 110 db (dBA)
Monitor/Receiver-1	69.6	59.6	49.6
Monitor/Receiver-2	31.7	21.7	11.7
Monitor/Receiver-3	32.8	22.8	12.8
Monitor/Receiver-4	39.8	29.8	19.8
Receiver-5*	39.0	29.0	19.0
Receiver-6*	32.5	22.5	12.5
Receiver-7*	27.8	17.8	7.8
Receiver-8*	23.7	13.7	3.7
Receiver-9*	32.8	22.8	12.8
Receiver-10	62.1	52.1	42.1
Receiver-11*	52.7	42.7	32.7
Receiver-12	24.6	14.6	4.6
Receiver-13*	27.2	17.2	7.2
Receiver-14	38.5	28.5	18.5

Notes: * - Residential receptor locations

³ Proposed speaker specifications indicated a maximum sound power level of 127 db, for the purposes of the model the power level was round up to 130 db.

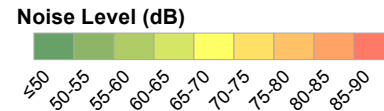
The results of the three noise models predicted that the maximum speaker related noise levels at the property boundary would occur at the northern property boundary (Monitor/Receiver -1) approximately 160 feet north of the modeled speaker location. Using the maximum speaker sound power level, noise levels at the northern boundary would be approximately 69.6 dbA, which exceeds the maximum allowable noise level of 65 dbA for amplified music after 5:00 PM. Using the speaker at lower sound power levels of 120 db and 110 db noise levels at the northern boundary would range from 59.6 dbA to 49.6 dbA, which would not exceed the maximum allowable noise level of 65 dbA for amplified music after 5:00 PM. Noise levels during use of the speaker at the maximum sound power level attenuate to below 65 dbA approximately 320 feet north of the property boundary. Utilization of the speaker at lower sound power levels between 120 db and 110 db indicate significantly lower noise levels beyond the northern property boundary and of the offsite residential receptors would receive noise levels above 40 dbA, which is the typical ambient noise level at the Project Site boundary.



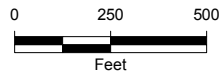
LEGEND:

- Residential Receptor Location
- Receiver Location
- Receiver and Noise Monitoring Location

- ▭ Proposed Winery Production and Wine Tasting Facility
- ▭ Assessor Parcel Boundary



Source: Esri Online Imagery Basemap
 Coordinate System: NAD 1983 StatePlane California V FIPS 0405 Feet
 Notes: This map was created for informational and display purposes only.

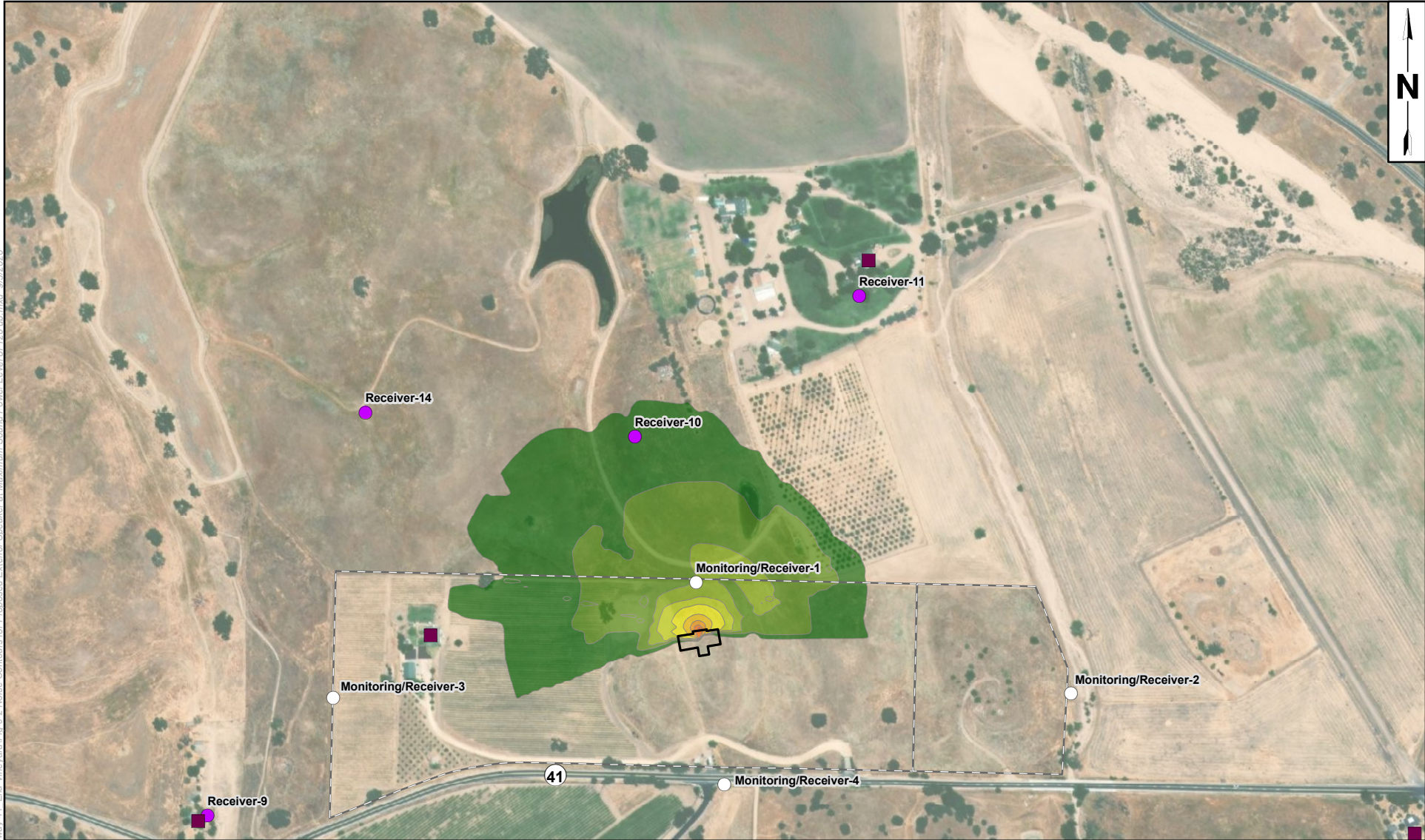


PROJECT NAME: NOISE STUDY PROPOSED WINERY, ELLA'S VINEYARD SAN LUIS OBISPO COUNTY, CA	
PROJECT NUMBER: 2002-5551	DATE: September 2020

NOISE CONTOURS FOR PROPOSED EXTERIOR SPEAKER AT MAXIMUM SOUND POWER LEVEL OF 130 DB

FIGURE 7-1

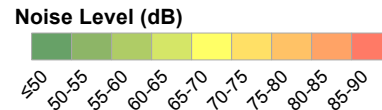
Z:\GIS\Projects\GIS\Map\Project\8790_E_Vineyard\Fig 6-1 Noise Contours for Proposed Exterior Speaker at Maximum Sound Power Level of 130 db.mxd 9/2/2020



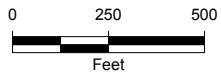
LEGEND:

- Residential Receptor Location
- Receiver Location
- Receiver and Noise Monitoring Location

- ▭ Proposed Winery Production and Wine Tasting Facility
- ▭ Assessor Parcel Boundary



Source: Esri Online Imagery Basemap
 Coordinate System: NAD 1983 StatePlane California V FIPS 0405 Feet
 Notes: This map was created for informational and display purposes only.



PROJECT NAME: NOISE STUDY PROPOSED WINERY, ELLA'S VINEYARD SAN LUIS OBISPO COUNTY, CA	
PROJECT NUMBER: 2002-5551	DATE: September 2020

NOISE CONTOURS FOR PROPOSED EXTERIOR SPEAKER AT MAXIMUM SOUND POWER LEVEL OF 120 DB

FIGURE 7-2

Z:\GIS\Projects\GIS\Map\Project\8790_E_Vineyard\41_Ella_Vineyard\Fig 6-2 Noise Contours for Proposed Exterior Speaker at Maximum Sound Power Level of 120 db.mxd 9/3/2020

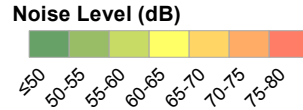


Z:\GIS\Projects\GIS\Map\Project\8790_E_Vineyard\Fig 6-3 Noise Contours for Proposed Exterior Speaker at Maximum Sound Power Level of 110 db.mxd 9/3/2020

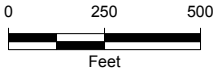
LEGEND:

- Residential Receptor Location
- Receiver Location
- Receiver and Noise Monitoring Location

- Proposed Winery Production and Wine Tasting Facility
- Assessor Parcel Boundary



Source: Esri Online Imagery Basemap
 Coordinate System: NAD 1983 StatePlane California V FIPS 0405 Feet
 Notes: This map was created for informational and display purposes only.



PROJECT NAME: NOISE STUDY	
PROPOSED WINERY, ELLA'S VINEYARD SAN LUIS OBISPO COUNTY, CA	
PROJECT NUMBER: 2002-5551	DATE: September 2020

NOISE CONTOURS FOR PROPOSED EXTERIOR SPEAKER AT MAXIMUM SOUND POWER LEVEL OF 110 DB

FIGURE 7-3

8.0 SUMMARY, CONCLUSIONS AND RECOMENDATIONS

8.1 SUMMARY

At the request of Ella's Vineyard, Padre completed ambient noise level monitoring activities at three onsite locations and one offsite location, traffic noise level modeling and noise level modeling of future amplified music at the proposed winery. Based on the results of the above referenced activities, Padre provides the following summary, and makes the conclusions presented below.

- The results of the noise monitoring indicate that the average ambient noise level at the property boundaries of the Project site is approximately 40.2 L_{eq} dbA and 57.2 L_{max} dbA. Ambient noise levels along HWY 41 were measured to be 68.9 L_{eq} dbA and 90.6 L_{max} dbA. According to the traffic counts approximately 160 vehicles passed by the Project per hour during the course of the ambient noise level monitoring. Traffic on HWY 41 appears to be the primary source of noise at the Project Site and surrounding area.
- According to the traffic noise model results traffic related noise levels were predicted to attenuate to below approximately 40 dbA approximately 160 feet to 170 feet north of HWY 41 and 60 feet to 120 feet to the south of HYW 41 during the daytime. Nighttime traffic noise levels were predicted to attenuate to below approximately 40 dbA approximately 20 feet to 25 feet to the north and south of HWY 41. Traffic noise levels at residential receptors were not indicated at noise levels above 40 dbA, with the exception of Reciever-9 which is located immediately adjacent to HWY 41.
- The results of the three noise models predicted that the maximum noise levels at the property boundary would occur at the northern property boundary (Monitor/Receiver -1). Utilization of the proposed speaker at the maximum sound power level of 130 db was predicted by the model to generate noise levels at approximately 69.6 dbA at the northern property, which would exceed the maximum allowable noise level of 65 dbA for amplified music after 5:00 PM. Utilization of the proposed speaker at lower sound power levels of 120 db and 110 db noise levels at the northern boundary would range from 59.6 dbA to 49.6 dbA, which would not exceed the maximum allowable noise level of 65 dbA for amplified music after 5:00 PM. The first model indicated that noise levels during utilization of the proposed speaker at the maximum sound power level would attenuate to below 65 dbA approximately 150 feet north of the property boundary. The second and third model indicated that utilization of the speaker at lower sound power levels between 120 db and 110 db would result in significantly lower noise levels beyond the northern property boundary. Additionally, all offsite residential receptors would receive speaker related noise levels below 40 dbA, which is the typical ambient noise level at the residential receptors.

8.2 CONCLUSIONS

Padre concludes that based on the results indicated above, utilization of the proposed external speaker at the maximum sound power level would result in noise levels at the northern property boundary that would exceed the exceed the maximum allowable noise level of 65 dbA for amplified music after 5:00 PM. However, utilization of the proposed external speaker at lower sound power levels would not result in noise levels exceeding 65 dbA at the northern property boundary.

Additionally, while utilizing lower speaker sound power levels nearby residential receptors would not receive noise levels that exceeded typical ambient noise levels.

8.3 RECOMENDATIONS

Implementation of the following recommendations for exterior utilization of the proposed speaker would reduce noise levels at the northern property boundary to less than the County's maximum allowable noise level of 65 db.

- Utilize the proposed speaker at sound power levels below 120 db;
- Designate a location for placement of an exterior speaker as close to the proposed structure as possible,
- Verify that the speakers utilized by special event vendors are similar to the proposed speaker specifications.

Additionally, Padre recommends periodic monitoring of noise levels at the northern property boundary during the proposed speaker use to document speaker noise levels at the property boundary⁴.

⁴ If a professional noise meter is not readily available there are noise monitoring applications available for smart phones. OpenNoise is an open source noise monitoring application that is freely available. It should be noted that these applications are typically not intended for professional use.

9.0 REFERENCES

- American Industrial Hygiene Association. 2003. The Noise Manual, Fifth Addition.
- California Department of Transportation (Caltrans). 2018. 2018-truck-aadt -a11y.xlsx. Accessed on August 17, 2020 at: <https://dot.ca.gov/-/media/dot-media/programs/traffic-operations/documents/census/aadt/2018-truck-aadt-a11y.xlsx>.
- Google Earth. 2020. Digital Elevation Model of Area Surrounding Creston, San Luis Obispo, California. Accessed on August 17, 2020 from Google Earth Pro.
- Open Street Map. 2020. Open Street Map Data, Accessed on August 17, 2020 at: <https://www.openstreetmap.org/export#map=15/35.5312/-120.5060>.
- San Luis Obispo County. 2020a. San Luis Obispo County Code. 22.10.120 - Noise Standards. Accessed on August 14, 2020 at: https://library.municode.com/ca/san_luis_obispo_county/codes/county_code?nodeId=TIT22LAUSOR_ART3SIPLPRDEST_CH22.10GEPRDEOPT_22.10.120NOST
- _____.2020b. San Luis Obispo County Code. 22.30.070 - Agricultural Processing Uses. Accessed on August 14, 2020 at: https://library.municode.com/ca/san_luis_obispo_county/codes/county_code?nodeId=TIT22LAUSOR_ART4STSPLAUS_CH22.30STSPLAUS_22.30.070AGPRUS
- U.S. Department of Transportation Federal Highway Administration (FHWA). 2020. The Audible Landscape: A Manual for Highway Noise and Land Use. Accessed on July 1, 2020 at: https://www.fhwa.dot.gov/ENVIRONMENT/noise/noise_compatible_planning/federal_approach/audible_landscape/al04.cfm#:~:text=These%20can%20include%3A,source%20or%20the%20highway%3B%20and

APPENDIX A

NOISE METER CALIBRATION AND MONITORING FORMS

AMBIENT NOISE MEASUREMENT DATA SHEET



Padre Associates, Inc.
369 Pacific Street
San Luis Obispo, CA 93404

(805) 786-2651
(805) 786-2651 fax
www.padreinc.com

Project Number: _____ Date: 8/13/2020

Project Name: Ellis Vineyard Time: _____

Site Location: #1 Northern Farm line Operator: _____

Noise Meter: Larsen Davis Lxt

Calibrated At: 8/13/2020 10:00 am

Weather Conditions: cloudy light rain at times

Measurement Location # #1

Measurement Location:
 Distance from Primary Source (in feet)

Noise Sources: - Birds
- Plane

Begin Time: 1:15

Ending Time: 1:35

Leq (A): 41.0

LA Max (peak): 78.4

LAS (max): 58.4

LAS (min): 26.0

Details:

Signed By: 

AMBIENT NOISE MEASUREMENT DATA SHEET



Padre Associates, Inc.
369 Pacific Street
San Luis Obispo, CA 93404

(805) 786-2651
(805) 786-2651 fax
www.padreinc.com

Project Number:

Date: 8/13/2020

Project Name: Ellis Vineyard

Time:

Site Location: #2 East Fence line

Operator: NV

Noise Meter: Larson David LX+

Calibrated At: 8/13/2020 10:00 am

Weather Conditions: cloudy light rain at times

Measurement Location #

Measurement Location:
Distance from Primary Source (in feet)

Noise Sources:

Planes
 Traffic on Hwy 41
 Bird Noise

Begin Time:

1:50

Ending Time:

2:10

Leq (A):

39.2

LA Max (peak):

78.1


LAS (max):

55.0

LAS (min):

26.5

Details: Traffic & 49 cars
 2 S.M.I.

Signed By: 

1 motorcycle 1 semi T

AMBIENT NOISE MEASUREMENT DATA SHEET



Padre Associates, Inc.
369 Pacific Street
San Luis Obispo, CA 93404

(805) 786-2651
(805) 786-2651 fax
www.padreinc.com

Project Number:

Date: 8/13/2020

Project Name: Ella's Vineyard

Time:

Site Location: #3 West Fence line

Operator: RW

Noise Meter: Larson David Cxt

Calibrated At: 8/13/2020 10:00am

Weather Conditions: cloudy no rain during #3

Measurement Location #

#3

Measurement Location:
Distance from Primary
Source (in feet)

Noise Sources:

Traffic on 91
Birds singing
Plane at 7min

Begin Time:

2:40

Ending Time:

3:00

Leq (A):

40.5

LA Max (peak):

77.6

LAS (max):

58.3

LAS (min):

26.4

Details:

Traffic: ⁵⁵⁻⁶⁰ cars
1 semi
1 motorcycle

Signed By: 

AMBIENT NOISE MEASUREMENT DATA SHEET



Padre Associates, Inc.
369 Pacific Street
San Luis Obispo, CA 93404

(805) 786-2651
(805) 786-2651 fax
www.padreinc.com

Project Number: _____ Date: 8/13/2020

Project Name: Ellis's Vineyard Time: _____

Site Location: along HWY 411 - off site #4 Operator: RV

Noise Meter: Larson Davis Lxt

Calibrated At: 8/13/2020 10:00 am

Weather Conditions: Cloudy ~~with~~ No rain

Measurement Location # 4# off site

Measurement Location:
 Distance from Primary Source (in feet)

Noise Sources: Traffic on 41

Begin Time: 3:20

Ending Time: 3:40

Leq (A): 68.8

LA Max (peak): 107.8

LAS (max): 90.6

LAS (min): 28.4

Details: Traffic: 51 cars

Signed By: 

Calibration Certificate

Certificate Number 2019003864

Customer:

Padre Associates
1861 Knoll Drive
Ventura, CA 93003, United States

Model Number 377C20
Serial Number 310410
Test Results Pass
Initial Condition As Manufactured
Description 1/2 inch Microphone - RI - 0V

Procedure Number D0001.8387
Technician Abraham Ortega
Calibration Date 27 Mar 2019
Calibration Due 27 Mar 2021
Temperature 24.0 °C ± 0.01 °C
Humidity 31.2 %RH ± 0.5 %RH
Static Pressure 101.69 kPa ± 0.03 kPa

Evaluation Method Tested electrically using an electrostatic actuator.

Compliance Standards Compliant to Manufacturer Specifications.

Issuing lab certifies that the instrument described above meets or exceeds all specifications as stated in the referenced procedure (unless otherwise noted). It has been calibrated using measurement standards traceable to the SI through the National Institute of Standards and Technology (NIST), or other national measurement institutes, and meets the requirements of ISO/IEC 17025:2005. Test points marked with a ‡ do not fall within this laboratory's scope of accreditation.

The quality system is registered to ISO 9001:2015.

This calibration is a direct comparison of the unit under test to the listed reference standards and did not involve any sampling plans to complete. No allowance has been made for the instability of the test device due to use, time, etc. Such allowances would be made by the customer as needed.

The uncertainties were computed in accordance with the ISO Guide to the Expression of Uncertainty in Measurement (GUM). A coverage factor of approximately 2 sigma (k=2) has been applied to the standard uncertainty to express the expanded uncertainty at approximately 95% confidence level.

This report may not be reproduced, except in full, unless permission for the publication of an approved abstract is obtained in writing from the organization issuing this report.

Standards Used

Description	Cal Date	Cal Due	Cal Standard
Larson Davis Model 2900 Real Time Analyzer	07/02/2018	07/02/2019	001230
Microphone Calibration System	08/28/2018	08/28/2019	001233
1/2" Preamplifier	12/17/2018	12/17/2019	001274
Agilent 34401A DMM	12/07/2018	12/07/2019	001329
Larson Davis CAL250 Acoustic Calibrator	01/04/2019	01/04/2020	003030
1/2" Preamplifier	04/12/2018	04/12/2019	006506
Larson Davis 1/2" Preamplifier 7-pin LEMO	08/22/2018	08/22/2019	006507
1/2 inch Microphone - RI - 200V	05/10/2018	05/10/2019	006510
1/2 inch Microphone - RI - 200V	08/09/2018	08/09/2019	006519
Larson Davis 1/2" Preamplifier 7-pin LEMO	08/22/2018	08/22/2019	006530
Larson Davis 1/2" Preamplifier 7-pin LEMO	08/13/2018	08/11/2019	006531

LARSON DAVIS - A PCB PIEZOTRONICS DIV.
1681 West 820 North
Provo, UT 84601, United States
716-684-0001



Sensitivity

Measurement	Test Result [mV/Pa]	Lower limit [mV/Pa]	Upper limit [mV/Pa]	Expanded Uncertainty [mV/Pa]	Result
Open Circuit Sensitivity	49.99	42.17	59.57	1.20	Pass

-- End of measurement results--

Capacitance

Measurement	Test Result [pF]	Result
Capacitance	13.00	‡

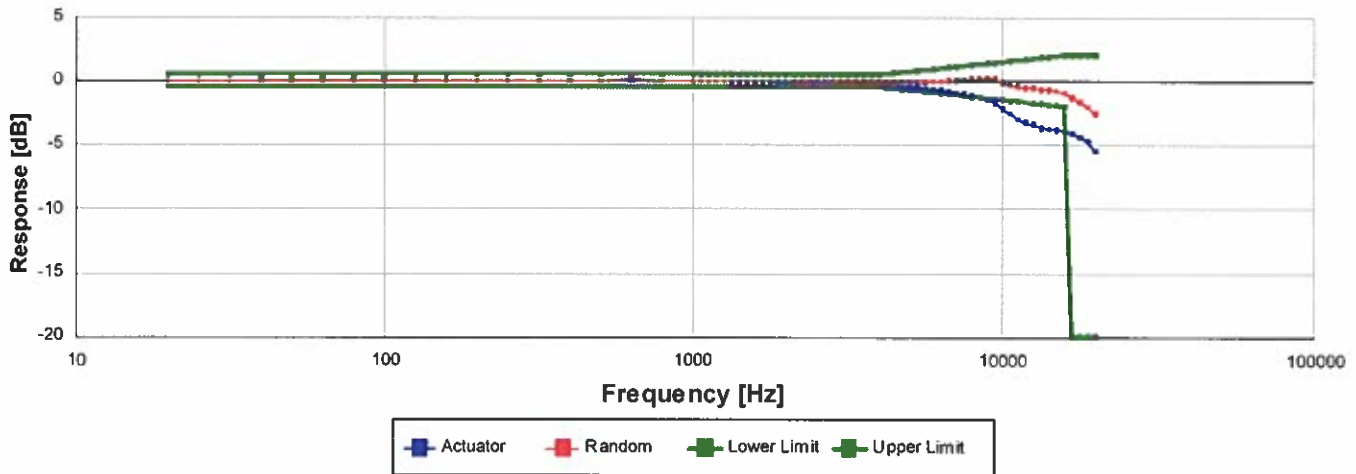
-- End of measurement results--

Lower Limiting Frequency

Measurement	Test Result [Hz]	Lower limit [Hz]	Upper limit [Hz]	Result
-3 dB Frequency	1.11	1.00	2.40	Pass ‡

-- End of measurement results--

Frequency Response



Data is normalized for 0 dB @ 251.19 Hz.

Frequency [Hz]	Actuator [dB]	Random [dB]	Lower limit [dB]	Upper limit [dB]	Result
19.95	-0.06	-0.06	-0.50	0.50	Pass ‡
25.12	-0.03	-0.03	-0.50	0.50	Pass ‡
31.62	0.00	0.00	-0.50	0.50	Pass ‡
39.81	0.01	0.01	-0.50	0.50	Pass ‡
50.12	0.02	0.02	-0.50	0.50	Pass ‡
63.10	0.01	0.01	-0.50	0.50	Pass ‡
79.43	0.01	0.01	-0.50	0.50	Pass ‡
100.00	0.01	0.01	-0.50	0.50	Pass ‡
125.89	0.01	0.01	-0.50	0.50	Pass ‡
158.49	0.01	0.01	-0.50	0.50	Pass ‡
199.53	0.00	0.00	-0.50	0.50	Pass ‡



Frequency [Hz]	Actuator [dB]	Random [dB]	Lower limit [dB]	Upper limit [dB]	Result
251.19	0.00	0.00	-0.50	0.50	Pass ‡
316.23	-0.01	-0.01	-0.50	0.50	Pass ‡
398.11	-0.02	-0.01	-0.50	0.50	Pass ‡
501.19	-0.02	-0.01	-0.50	0.50	Pass ‡
630.96	-0.03	0.15	-0.50	0.50	Pass ‡
794.33	-0.03	-0.01	-0.50	0.50	Pass ‡
1,000.00	-0.05	-0.02	-0.50	0.50	Pass ‡
1,059.25	-0.05	-0.02	-0.50	0.50	Pass ‡
1,122.02	-0.05	-0.02	-0.50	0.50	Pass ‡
1,188.50	-0.05	-0.02	-0.50	0.50	Pass ‡
1,258.93	-0.06	-0.03	-0.50	0.50	Pass ‡
1,333.52	-0.07	-0.03	-0.50	0.50	Pass ‡
1,412.54	-0.07	-0.03	-0.50	0.50	Pass ‡
1,496.24	-0.08	-0.04	-0.50	0.50	Pass ‡
1,584.89	-0.08	-0.04	-0.50	0.50	Pass ‡
1,678.80	-0.09	-0.05	-0.50	0.50	Pass ‡
1,778.28	-0.10	-0.06	-0.50	0.50	Pass ‡
1,883.65	-0.11	-0.06	-0.50	0.50	Pass ‡
1,995.26	-0.11	-0.06	-0.50	0.50	Pass ‡
2,113.49	-0.12	-0.07	-0.50	0.50	Pass ‡
2,238.72	-0.13	-0.08	-0.50	0.50	Pass ‡
2,371.37	-0.15	-0.09	-0.50	0.50	Pass ‡
2,511.89	-0.15	-0.08	-0.50	0.50	Pass ‡
2,660.73	-0.17	-0.10	-0.50	0.50	Pass ‡
2,818.38	-0.18	-0.10	-0.50	0.50	Pass ‡
2,985.38	-0.20	-0.11	-0.50	0.50	Pass ‡
3,162.28	-0.23	-0.12	-0.50	0.50	Pass ‡
3,349.65	-0.24	-0.12	-0.50	0.50	Pass ‡
3,548.13	-0.27	-0.13	-0.50	0.50	Pass ‡
3,758.37	-0.30	-0.14	-0.50	0.50	Pass ‡
3,981.07	-0.33	-0.14	-0.50	0.50	Pass ‡
4,216.97	-0.36	-0.13	-0.63	0.56	Pass ‡
4,466.84	-0.41	-0.13	-0.60	0.63	Pass ‡
4,731.51	-0.46	-0.13	-0.70	0.69	Pass ‡
5,011.87	-0.51	-0.12	-0.80	0.75	Pass ‡
5,308.84	-0.56	-0.10	-0.80	0.81	Pass ‡
5,623.41	-0.61	-0.07	-0.90	0.88	Pass ‡
5,956.62	-0.67	-0.04	-0.90	0.94	Pass ‡
6,309.57	-0.74	0.00	-1.00	1.00	Pass ‡
6,683.44	-0.84	0.02	-1.10	1.06	Pass ‡
7,079.46	-0.93	0.07	-1.10	1.13	Pass ‡
7,498.94	-1.03	0.13	-1.20	1.19	Pass ‡
7,943.28	-1.17	0.16	-1.30	1.25	Pass ‡
8,413.95	-1.33	0.19	-1.30	1.31	Pass ‡
8,912.51	-1.50	0.22	-1.40	1.38	Pass ‡
9,440.61	-1.76	0.16	-1.40	1.43	Pass ‡
10,000.00	-2.25	-0.11	-1.50	1.50	Pass ‡
10,592.54	-2.62	-0.27	-1.60	1.56	Pass ‡
11,220.19	-3.01	-0.45	-1.60	1.63	Pass ‡
11,885.02	-3.28	-0.54	-1.70	1.68	Pass ‡
12,589.25	-3.45	-0.55	-1.80	1.75	Pass ‡
13,335.21	-3.71	-0.70	-1.80	1.81	Pass ‡
14,125.38	-3.76	-0.69	-1.90	1.87	Pass ‡

Certificate Number 2019003864

Frequency [Hz]	Actuator [dB]	Random [dB]	Lower limit [dB]	Upper limit [dB]	Result
14,962.36	-3.84	-0.77	-1.93	1.93	Pass ‡
15,848.93	-3.95	-0.94	-2.00	2.00	Pass ‡
16,788.04	-4.09	-1.31		2.00	Pass ‡
17,782.80	-4.40	-1.62		2.00	Pass ‡
18,836.49	-4.71	-1.98		2.00	Pass ‡
19,952.62	-5.45	-2.55		2.00	Pass ‡

-- End of measurement results--

Signatory: Abraham Ortega

LARSON DAVIS - A PCB PIEZOTRONICS DIV.
 1681 West 820 North
 Provo, UT 84601, United States
 716-684-0001



APPENDIX B

NOISE MODEL INPUT AND OUTPUT DATA

No.	Receiver n	Building side	Floor	Limit Day dB(A)	Level			Conflict						
					Evening	Night	Lden	Day dB(A)	Evening	Night	Lden			
1	1 -		GF	70	65	65	67.5	29.9	29.9	20.9	31.3	-	-	-
2	2 -		GF	70	65	65	67.5	41.7	41.7	32.7	43.1	-	-	-
3	3 -		GF	70	65	65	67.5	42.9	42.9	33.9	44.3	-	-	-
4	4 -		GF	70	65	65	67.5	59.2	59.2	50.2	60.6	-	-	-
5	5 -		GF	70	65	65	67.5	35.1	35.1	26.1	36.5	-	-	-
6	6 -		GF	70	65	65	67.5	29.5	29.5	20.6	30.9	-	-	-
7	7 -		GF	70	65	65	67.5	32.1	32.1	23.1	33.5	-	-	-
8	8 -		GF	70	65	65	67.5	36.9	36.9	27.9	38.3	-	-	-
9	9 -		GF	70	65	65	67.7	51.4	51.4	42.4	52.8	-	-	-
10	10 -		GF	70	65	65	67.5	36.8	36.8	27.8	38.2	-	-	-
11	11 -		GF	70	65	65	67.5	29.5	29.5	20.5	30.9	-	-	-
12	12 -		GF	70	65	65	67.7	37.8	37.8	28.8	39.2	-	-	-
13	13 -		GF	70	65	65	67.7	28.8	28.8	19.8	30.2	-	-	-
14	14 -		GF	70	65	65	67.7	22.6	22.6	13.7	24	-	-	-
15	15 -		GF	70	65	65	67.7	16.7	16.7	7.8	18.1	-	-	-

Source	Level name dB(A)	Traffic	lane	Day	Evening	Night	Lden
	1 GF			29.9	29.9	20.9	31.3
1 R		26.5		26.5	17.5	27.9	
1 L		27.2		27.2	18.2	28.6	
	2 GF			41.7	41.7	32.7	43.1
1 R		38.3		38.3	29.3	39.7	
1 L		39.1		39.1	30.1	40.5	
	3 GF			42.9	42.9	33.9	44.3
1 R		39.9		39.9	30.9	41.3	
1 L		39.9		39.9	30.9	41.2	
	4 GF			59.2	59.2	50.2	60.6
1 R		56.9		56.9	47.9	58.3	
1 L		55.4		55.4	46.4	56.8	
	5 GF			35.1	35.1	26.1	36.5
1 R		31.9		31.9	22.9	33.3	
1 L		32.3		32.3	23.3	33.7	
	6 GF			29.5	29.5	20.6	30.9
1 R		26		26	17	27.4	
1 L		27		27	18	28.4	
	7 GF			32.1	32.1	23.1	33.5
1 R		28.9		28.9	19.9	30.3	
1 L		29.4		29.4	20.4	30.7	
	8 GF			36.9	36.9	27.9	38.3
1 R		33.7		33.7	24.7	35.1	
1 L		34.2		34.2	25.2	35.6	
	9 GF			51.4	51.4	42.4	52.8
1 R		48.1		48.1	39.1	49.5	
1 L		48.6		48.6	39.6	50	
	10 GF			36.8	36.8	27.8	38.2
1 R		33.5		33.5	24.5	34.9	
1 L		34.1		34.1	25.1	35.5	
	11 GF			29.5	29.5	20.5	30.9
1 R		26.5		26.5	17.5	27.9	
1 L		26.5		26.5	17.5	27.9	
	12 GF			37.8	37.8	28.8	39.2
1 R		34.9		34.9	25.9	36.3	
1 L		34.7		34.7	25.7	36.1	
	13 GF			28.8	28.8	19.8	30.2
1 R		25.6		25.6	16.7	27	
1 L		26		26	17	27.4	
	14 GF			22.6	22.6	13.7	24
1 R		19.4		19.4	10.4	20.8	
1 L		19.9		19.9	10.9	21.3	
	15 GF			16.7	16.7	7.8	18.1
1 R		13.6		13.6	4.6	15	
1 L		13.9		13.9	4.9	15.3	

Receiver spectra-traffic

No.	Name	Floor	Time slice	63 Hz	125 Hz	250 Hz	500 Hz	1 kHz	2 kHz	4 kHz	8 kHz
1	1 GF	1 GF	Day	8.6	13.3	19.5	24	27	19.6	2.8	-28.5
1	1 GF	1 GF	Evening	8.6	13.3	19.5	24	27	19.6	2.8	-28.5
1	1 GF	1 GF	Night	-0.3	4.3	10.5	15	18	10.6	-6.2	-37.5
1	1 GF	1 GF	Lden	10	14.7	20.9	25.4	28.4	21	4.2	-27.1
2	2 GF	2 GF	Day	16.8	23.4	31	37.5	36	34.7	28.8	9.7
2	2 GF	2 GF	Evening	16.8	23.4	31	37.5	36	34.7	28.8	9.7
2	2 GF	2 GF	Night	7.8	14.4	22	28.5	27	25.7	19.8	0.7
2	2 GF	2 GF	Lden	18.2	24.8	32.4	38.9	37.4	36.1	30.2	11.1
3	3 GF	3 GF	Day	18.3	24.3	32.1	36.1	37.5	38.5	29	8.1
3	3 GF	3 GF	Evening	18.3	24.3	32.1	36.1	37.5	38.5	29	8.1
3	3 GF	3 GF	Night	9.3	15.4	23.1	27.1	28.5	29.5	20	-0.9
3	3 GF	3 GF	Lden	19.7	25.7	33.5	37.5	38.9	39.9	30.4	9.5
4	4 GF	4 GF	Day	28.4	35.2	43	50.4	56.3	53.6	45.4	34.7
4	4 GF	4 GF	Evening	28.4	35.2	43	50.4	56.3	53.6	45.4	34.7
4	4 GF	4 GF	Night	19.4	26.2	34	41.4	47.3	44.6	36.4	25.8
4	4 GF	4 GF	Lden	29.8	36.6	44.4	51.8	57.7	55	46.8	36.1
5	5 GF	5 GF	Day	16.1	22.4	30	30.4	28.9	20.4	17.1	4.1
5	5 GF	5 GF	Evening	16.1	22.4	30	30.4	28.9	20.4	17.1	4.1
5	5 GF	5 GF	Night	7.1	13.4	21	21.4	19.9	11.5	8.1	-4.9
5	5 GF	5 GF	Lden	17.5	23.8	31.4	31.8	30.3	21.8	18.5	5.5
6	6 GF	6 GF	Day	6.6	12	15.9	20.6	27.7	21	5.2	-31
6	6 GF	6 GF	Evening	6.6	12	15.9	20.6	27.7	21	5.2	-31
6	6 GF	6 GF	Night	-2.4	3	6.9	11.6	18.8	12.1	-3.7	-40
6	6 GF	6 GF	Lden	8	13.4	17.3	22	29.1	22.4	6.6	-29.6
7	7 GF	7 GF	Day	7.2	13.4	15.9	24	30.2	24.3	6.3	-38.9
7	7 GF	7 GF	Evening	7.2	13.4	15.9	24	30.2	24.3	6.3	-38.9
7	7 GF	7 GF	Night	-1.8	4.4	6.9	15	21.2	15.3	-2.7	-47.9
7	7 GF	7 GF	Lden	8.6	14.8	17.3	25.4	31.6	25.7	7.7	-37.5
8	8 GF	8 GF	Day	13.1	19.2	24.3	28.2	33.9	31.4	19.4	-10.8
8	8 GF	8 GF	Evening	13.1	19.2	24.3	28.2	33.9	31.4	19.4	-10.8
8	8 GF	8 GF	Night	4.1	10.2	15.3	19.2	24.9	22.4	10.4	-19.8
8	8 GF	8 GF	Lden	14.5	20.6	25.7	29.6	35.3	32.8	20.8	-9.4
9	9 GF	9 GF	Day	23.8	29.7	37.2	43.6	48.6	44.9	36.4	21

9	9 GF	Evening	23.8	29.7	37.2	43.6	48.6	44.9	36.4	21
9	9 GF	Night	14.8	20.7	28.2	34.6	39.6	35.9	27.4	12
9	9 GF	Lden	25.2	31.1	38.6	45	50	46.3	37.8	22.4
10	10 GF	Day	10	15.9	23.6	29	34.4	29.8	14.1	-27.2
10	10 GF	Evening	10	15.9	23.6	29	34.4	29.8	14.1	-27.2
10	10 GF	Night	1	6.9	14.6	20	25.4	20.8	5.1	-36.1
10	10 GF	Lden	11.4	17.3	25	30.4	35.8	31.2	15.5	-25.8
11	11 GF	Day	8.7	14.7	21	20.9	25.5	23.9	2.1	-59.4
11	11 GF	Evening	8.7	14.7	21	20.9	25.5	23.9	2.1	-59.4
11	11 GF	Night	-0.3	5.7	12	12	16.6	14.9	-6.8	-68.4
11	11 GF	Lden	10.1	16.1	22.4	22.3	26.9	25.3	3.5	-58
12	12 GF	Day	9.8	16.4	20.6	23.9	35.7	32.5	18.9	-13.4
12	12 GF	Evening	9.8	16.4	20.6	23.9	35.7	32.5	18.9	-13.4
12	12 GF	Night	0.8	7.4	11.7	14.9	26.8	23.5	9.9	-22.4
12	12 GF	Lden	11.2	17.8	22	25.3	37.1	33.9	20.3	-12
13	13 GF	Day	10.9	17.6	23.8	18.9	22.8	22	13.8	-10.8
13	13 GF	Evening	10.9	17.6	23.8	18.9	22.8	22	13.8	-10.8
13	13 GF	Night	1.9	8.6	14.8	9.9	13.8	13	4.8	-19.8
13	13 GF	Lden	12.3	19	25.2	20.3	24.2	23.4	15.2	-9.4
14	14 GF	Day	6	10	15	17.9	18.5	8.2	-14.6	-62.4
14	14 GF	Evening	6	10	15	17.9	18.5	8.2	-14.6	-62.4
14	14 GF	Night	-3	1	6.1	8.9	9.5	-0.8	-23.6	-71.4
14	14 GF	Lden	7.4	11.4	16.4	19.3	19.9	9.6	-13.2	-61
15	15 GF	Day	0.2	4.2	9.1	11.8	12.5	4.4	-15	-58
15	15 GF	Evening	0.2	4.2	9.1	11.8	12.5	4.4	-15	-58
15	15 GF	Night	-8.8	-4.8	0.1	2.8	3.5	-4.5	-24	-67
15	15 GF	Lden	1.6	5.6	10.5	13.2	13.9	5.8	-13.6	-56.7

Receiver(speaker-110)			Limit Day dB(A)	Level			Conflict							
No.	Receiver n. Building side	Floor		Evening	Night	Lden	Day dB(A)	Evening	Night	Lden	Day dB	Evening	Night	Lden
1	1 -	GF	70	65	65	67.5	69.6	69.6	69.6	76.6 -		4.6	4.6	9.1
2	2 -	GF	70	65	65	67.5	31.7	31.7	31.7	38.7 -	-	-	-	
3	3 -	GF	70	65	65	67.5	32.8	32.8	32.8	39.8 -	-	-	-	
4	4 -	GF	70	65	65	67.5	39.8	39.8	39.8	46.8 -	-	-	-	
5	5 -	GF	70	65	65	67.5	39	39	39	46 -	-	-	-	
6	6 -	GF	70	65	65	67.5	32.5	32.5	32.5	39.5 -	-	-	-	
7	7 -	GF	70	65	65	67.5	27.8	27.8	27.8	34.8 -	-	-	-	
8	8 -	GF	70	65	65	67.5	23.7	23.7	23.7	30.7 -	-	-	-	
9	9 -	GF	70	65	65	67.5	32.8	32.8	32.8	39.8 -	-	-	-	
10	10 -	GF	70	65	65	67.5	62.1	62.1	62.1	69.1 -	-	-		1.6
11	11 -	GF	70	65	65	67.5	52.7	52.7	52.7	59.7 -	-	-	-	
12	12 -	GF	70	65	65	67.5	24.6	24.6	24.6	31.6 -	-	-	-	
13	13 -	GF	70	65	65	67.5	27.2	27.2	27.2	34.2 -	-	-	-	
14	14 -	GF	70	65	65	67.5	38.5	38.5	38.5	45.5 -	-	-	-	

Receiver(speaker-110)				Limit Day dB(A)	Evening	Night	Lden	Level			Conflict Day dB	Evening	Night	Lden
No.	Receiver n.	Building side	Floor					Day dB(A)	Evening	Night				
1	1 -		GF	70	65	65	67.5	49.6	49.6	49.6	56.6 -	-	-	-
2	2 -		GF	70	65	65	67.5	11.7	11.7	11.7	18.7 -	-	-	-
3	3 -		GF	70	65	65	67.5	12.8	12.8	12.8	19.8 -	-	-	-
4	4 -		GF	70	65	65	67.5	19.8	19.8	19.8	26.8 -	-	-	-
5	5 -		GF	70	65	65	67.5	19	19	19	26 -	-	-	-
6	6 -		GF	70	65	65	67.5	12.5	12.5	12.5	19.5 -	-	-	-
7	7 -		GF	70	65	65	67.5	7.8	7.8	7.8	14.8 -	-	-	-
8	8 -		GF	70	65	65	67.5	3.7	3.7	3.7	10.7 -	-	-	-
9	9 -		GF	70	65	65	67.5	12.8	12.8	12.8	19.8 -	-	-	-
10	10 -		GF	70	65	65	67.5	42.1	42.1	42.1	49.1 -	-	-	-
11	11 -		GF	70	65	65	67.5	32.7	32.7	32.7	39.7 -	-	-	-
12	12 -		GF	70	65	65	67.5	4.6	4.6	4.6	11.6 -	-	-	-
13	13 -		GF	70	65	65	67.5	7.2	7.2	7.2	14.2 -	-	-	-
14	14 -		GF	70	65	65	67.5	18.5	18.5	18.5	25.5 -	-	-	-

Receiver(speaker-120)				Limit	Level						Conflict				
No.	Receiver n.	Building side	Floor	Day dB(A)	Evening	Night	Lden	Day dB(A)	Evening	Night	Lden	Day dB	Evening	Night	Lden
1	1 -		GF	70	65	65	67.5	59.6	59.6	59.6	66.6	-	-	-	-
2	2 -		GF	70	65	65	67.5	21.7	21.7	21.7	28.7	-	-	-	-
3	3 -		GF	70	65	65	67.5	22.8	22.8	22.8	29.8	-	-	-	-
4	4 -		GF	70	65	65	67.5	29.8	29.8	29.8	36.8	-	-	-	-
5	5 -		GF	70	65	65	67.5	29	29	29	36	-	-	-	-
6	6 -		GF	70	65	65	67.5	22.5	22.5	22.5	29.5	-	-	-	-
7	7 -		GF	70	65	65	67.5	17.8	17.8	17.8	24.8	-	-	-	-
8	8 -		GF	70	65	65	67.5	13.7	13.7	13.7	20.7	-	-	-	-
9	9 -		GF	70	65	65	67.5	22.8	22.8	22.8	29.8	-	-	-	-
10	10 -		GF	70	65	65	67.5	52.1	52.1	52.1	59.1	-	-	-	-
11	11 -		GF	70	65	65	67.5	42.7	42.7	42.7	49.7	-	-	-	-
12	12 -		GF	70	65	65	67.5	14.6	14.6	14.6	21.6	-	-	-	-
13	13 -		GF	70	65	65	67.5	17.2	17.2	17.2	24.2	-	-	-	-
14	14 -		GF	70	65	65	67.5	28.5	28.5	28.5	35.5	-	-	-	-

Contributions-speaker full

Source	Level name dB(A)	Traffic	lane	Day	Evening	Night	Lden
	1 GF			69.6	69.6	69.6	76.6
1 -		69.6		69.6	69.6	76.6	
	2 GF			31.7	31.7	31.7	38.7
1 -		31.7		31.7	31.7	38.7	
	3 GF			32.8	32.8	32.8	39.8
1 -		32.8		32.8	32.8	39.8	
	4 GF			39.8	39.8	39.8	46.8
1 -		39.8		39.8	39.8	46.8	
	5 GF			39	39	39	46
1 -		39		39	39	46	
	6 GF			32.5	32.5	32.5	39.5
1 -		32.5		32.5	32.5	39.5	
	7 GF			27.8	27.8	27.8	34.8
1 -		27.8		27.8	27.8	34.8	
	8 GF			23.7	23.7	23.7	30.7
1 -		23.7		23.7	23.7	30.7	
	9 GF			32.8	32.8	32.8	39.8
1 -		32.8		32.8	32.8	39.8	
	10 GF			62.1	62.1	62.1	69.1
1 -		62.1		62.1	62.1	69.1	
	11 GF			52.7	52.7	52.7	59.7
1 -		52.7		52.7	52.7	59.7	
	12 GF			24.6	24.6	24.6	31.6
1 -		24.6		24.6	24.6	31.6	
	13 GF			27.2	27.2	27.2	34.2
1 -		27.2		27.2	27.2	34.2	
	14 GF			38.5	38.5	38.5	45.5
1 -		38.5		38.5	38.5	45.5	

Contributions-speaker(110)

Source	Level name dB(A)	Traffic	lane	Day	Evening	Night	Lden
	1 GF			49.6	49.6	49.6	56.6
1 -		49.6		49.6	49.6	56.6	
	2 GF			11.7	11.7	11.7	18.7
1 -		11.7		11.7	11.7	18.7	
	3 GF			12.8	12.8	12.8	19.8
1 -		12.8		12.8	12.8	19.8	
	4 GF			19.8	19.8	19.8	26.8
1 -		19.8		19.8	19.8	26.8	
	5 GF			19	19	19	26
1 -		19		19	19	26	
	6 GF			12.5	12.5	12.5	19.5
1 -		12.5		12.5	12.5	19.5	
	7 GF			7.8	7.8	7.8	14.8
1 -		7.8		7.8	7.8	14.8	
	8 GF			3.7	3.7	3.7	10.7
1 -		3.7		3.7	3.7	10.7	
	9 GF			12.8	12.8	12.8	19.8
1 -		12.8		12.8	12.8	19.8	
	10 GF			42.1	42.1	42.1	49.1
1 -		42.1		42.1	42.1	49.1	
	11 GF			32.7	32.7	32.7	39.7
1 -		32.7		32.7	32.7	39.7	
	12 GF			4.6	4.6	4.6	11.6
1 -		4.6		4.6	4.6	11.6	
	13 GF			7.2	7.2	7.2	14.2
1 -		7.2		7.2	7.2	14.2	
	14 GF			18.5	18.5	18.5	25.5
1 -		18.5		18.5	18.5	25.5	

Contribution(speaker120)

Source	Level name dB(A)	Traffic	lane	Day	Evening	Night	Lden
	1 GF			59.6	59.6	59.6	66.6
1 -		59.6		59.6	59.6	66.6	
	2 GF			21.7	21.7	21.7	28.7
1 -		21.7		21.7	21.7	28.7	
	3 GF			22.8	22.8	22.8	29.8
1 -		22.8		22.8	22.8	29.8	
	4 GF			29.8	29.8	29.8	36.8
1 -		29.8		29.8	29.8	36.8	
	5 GF			29	29	29	36
1 -		29		29	29	36	
	6 GF			22.5	22.5	22.5	29.5
1 -		22.5		22.5	22.5	29.5	
	7 GF			17.8	17.8	17.8	24.8
1 -		17.8		17.8	17.8	24.8	
	8 GF			13.7	13.7	13.7	20.7
1 -		13.7		13.7	13.7	20.7	
	9 GF			22.8	22.8	22.8	29.8
1 -		22.8		22.8	22.8	29.8	
	10 GF			52.1	52.1	52.1	59.1
1 -		52.1		52.1	52.1	59.1	
	11 GF			42.7	42.7	42.7	49.7
1 -		42.7		42.7	42.7	49.7	
	12 GF			14.6	14.6	14.6	21.6
1 -		14.6		14.6	14.6	21.6	
	13 GF			17.2	17.2	17.2	24.2
1 -		17.2		17.2	17.2	24.2	
	14 GF			28.5	28.5	28.5	35.5
1 -		28.5		28.5	28.5	35.5	

Emissions-speaker

Source name	Reference Level	Frequency spectrum [dB(A)]																						
		dB(A)	31 Hz	40 Hz	50 Hz	63 Hz	80 Hz	100 Hz	125 Hz	160 Hz	200 Hz	250 Hz	315 Hz	400 Hz	500 Hz	630 Hz	800 Hz	1 kHz	1.3 kHz	1.6 kHz	2 kHz	2.5 kHz	3.2 kHz	
1 Lw/unit	Day	116.7	77.2	89	95.4	98.5	97.8	96.7	96.7	97.4	99.4	101.2	103.2	105	106.6	107.4	107.8	107.3	106.4	105.1	103.7	102.3	100.6	
1	Evening	116.7	77.2	89	95.4	98.5	97.8	96.7	96.7	97.4	99.4	101.2	103.2	105	106.6	107.4	107.8	107.3	106.4	105.1	103.7	102.3	100.6	
1	Night	116.7	77.2	89	95.4	98.5	97.8	96.7	96.7	97.4	99.4	101.2	103.2	105	106.6	107.4	107.8	107.3	106.4	105.1	103.7	102.3	100.6	

										Corrections		
	4	5	6.3	8	10	12.5	16	20	Cwall	CI	CT	
kHz	kHz	kHz	kHz	kHz	kHz	kHz	kHz	kHz	dB	dB	dB	
98.9	96.9	94.3	91.1	86.2	78.2	63.8	51.5	-	-	-	-	
98.9	96.9	94.3	91.1	86.2	78.2	63.8	51.5	-	-	-	-	
98.9	96.9	94.3	91.1	86.2	78.2	63.8	51.5	-	-	-	-	

Emissions-speaker-110

			Frequency spectrum [dB(A)]																		
Source	nar	Reference Level	dB(A)	31	40	50	63	80	100	125	160	200	250	315	400	500	630	800	1	1.3	1.6
			Hz	Hz	Hz	Hz	Hz	Hz	Hz	Hz	Hz	Hz	Hz	Hz	Hz	Hz	Hz	Hz	kHz	kHz	kHz
1	Lw/unit	Day	96.7	57.2	69	75.4	78.5	77.8	76.7	76.7	77.4	79.4	81.2	83.2	85	86.6	87.4	87.8	87.3	86.4	85.1
1		Evening	96.7	57.2	69	75.4	78.5	77.8	76.7	76.7	77.4	79.4	81.2	83.2	85	86.6	87.4	87.8	87.3	86.4	85.1
1		Night	96.7	57.2	69	75.4	78.5	77.8	76.7	76.7	77.4	79.4	81.2	83.2	85	86.6	87.4	87.8	87.3	86.4	85.1

											Corrections		
2	2.5	3.2	4	5	6.3	8	10	12.5	16	20	Cwall	CI	CT
kHz	kHz	kHz	kHz	kHz	kHz	kHz	kHz	kHz	kHz	kHz	dB	dB	dB
83.7	82.3	80.6	78.9	76.9	74.3	71.1	66.2	58.2	43.8	31.5	-	-	-
83.7	82.3	80.6	78.9	76.9	74.3	71.1	66.2	58.2	43.8	31.5	-	-	-
83.7	82.3	80.6	78.9	76.9	74.3	71.1	66.2	58.2	43.8	31.5	-	-	-

Emissions-speaker-120

		Frequency spectrum [dB(A)]																			
Source	nar	Reference Level	31	40	50	63	80	100	125	160	200	250	315	400	500	630	800	1	1.3	1.6	
		dB(A)	Hz	Hz	Hz	Hz	Hz	Hz	Hz	Hz	Hz	Hz	Hz	Hz	Hz	Hz	Hz	kHz	kHz	kHz	
1	Lw/unit	Day	106.7	67.2	79	85.4	88.5	87.8	86.7	86.7	87.4	89.4	91.2	93.2	95	96.6	97.4	97.8	97.3	96.4	95.1
1		Evening	106.7	67.2	79	85.4	88.5	87.8	86.7	86.7	87.4	89.4	91.2	93.2	95	96.6	97.4	97.8	97.3	96.4	95.1
1		Night	106.7	67.2	79	85.4	88.5	87.8	86.7	86.7	87.4	89.4	91.2	93.2	95	96.6	97.4	97.8	97.3	96.4	95.1

											Corrections		
2	2.5	3.2	4	5	6.3	8	10	12.5	16	20	Cwall	CI	CT
kHz	kHz	kHz	kHz	kHz	kHz	kHz	kHz	kHz	kHz	kHz	dB	dB	dB
93.7	92.3	90.6	88.9	86.9	84.3	81.1	76.2	68.2	53.8	41.5	-	-	-
93.7	92.3	90.6	88.9	86.9	84.3	81.1	76.2	68.2	53.8	41.5	-	-	-
93.7	92.3	90.6	88.9	86.9	84.3	81.1	76.2	68.2	53.8	41.5	-	-	-

	1 Point	Day	116.7	116.7	0	0	0	216.29	-57.7	1.7	0	-0.9	0	0	2.4	62.1	0	0	0	62.1
	1 Point	Evening	116.7	116.7	0	0	0	216.29	-57.7	1.7	0	-0.9	0	0	2.4	62.1	0	0	0	62.1
	1 Point	Night	116.7	116.7	0	0	0	216.29	-57.7	1.7	0	-0.9	0	0	2.4	62.1	0	0	0	62.1
	1 Point	Lden	116.7	116.7	0	0	0	216.29	-57.7	1.7	0	-0.9	0	0	2.4	62.1	0	7	0	69.1
11		GF																		
	1 Point	Day	116.7	116.7	0	0	0	395.88	-62.9	2.9	0	-1.6	-2.7	0	3.9	56.2	0	0	0	52.7
	1 Point	Evening	116.7	116.7	0	0	0	395.88	-62.9	2.9	0	-1.6	-2.7	0	3.9	56.2	0	0	0	52.7
	1 Point	Night	116.7	116.7	0	0	0	395.88	-62.9	2.9	0	-1.6	-2.7	0	3.9	56.2	0	0	0	52.7
	1 Point	Lden	116.7	116.7	0	0	0	395.88	-62.9	2.9	0	-1.6	-2.7	0	3.9	56.2	0	7	0	59.7
12		GF																		
	1 Point	Day	116.7	116.7	0	0	0	611.03	-66.7	0	-23.8	-1.1	0	0	0	25	0	0	0	24.6
	1 Point	Evening	116.7	116.7	0	0	0	611.03	-66.7	0	-23.8	-1.1	0	0	0	25	0	0	0	24.6
	1 Point	Night	116.7	116.7	0	0	0	611.03	-66.7	0	-23.8	-1.1	0	0	0	25	0	0	0	24.6
	1 Point	Lden	116.7	116.7	0	0	0	611.03	-66.7	0	-23.8	-1.1	0	0	0	25	0	7	0	31.6
13		GF																		
	1 Point	Day	116.7	116.7	0	0	0	821.74	-69.3	0	-17.5	-1.3	0	0	0	28.6	0	0	0	27.2
	1 Point	Evening	116.7	116.7	0	0	0	821.74	-69.3	0	-17.5	-1.3	0	0	0	28.6	0	0	0	27.2
	1 Point	Night	116.7	116.7	0	0	0	821.74	-69.3	0	-17.5	-1.3	0	0	0	28.6	0	0	0	27.2
	1 Point	Lden	116.7	116.7	0	0	0	821.74	-69.3	0	-17.5	-1.3	0	0	0	28.6	0	7	0	34.2
14		GF																		
	1 Point	Day	116.7	116.7	0	0	0	425.53	-63.6	0	-14.5	-0.6	0	0	2.5	40.5	0	0	0	38.5
	1 Point	Evening	116.7	116.7	0	0	0	425.53	-63.6	0	-14.5	-0.6	0	0	2.5	40.5	0	0	0	38.5
	1 Point	Night	116.7	116.7	0	0	0	425.53	-63.6	0	-14.5	-0.6	0	0	2.5	40.5	0	0	0	38.5
	1 Point	Lden	116.7	116.7	0	0	0	425.53	-63.6	0	-14.5	-0.6	0	0	2.5	40.5	0	7	0	45.5

Mean Propagation -Speaker 110

Source	Source t slice	Time	L'w dB(A)	Lw dB(A)	KI dB	KT dB	Ko dB	S m	Adiv dB	Agr dB	Abar dB	Aatm dB	Amisc dB	ADI dB	dLrefl dB	Ls dB(A)	Cmet dB	dLw dB	ZR dB	Lr dB(A)
1	,	GF																		
	1 Point	Day	96.7	96.7	0	0	0	49.32	-44.9	0.2	-2.6	-0.2	0	0	1.5	50.7	0	0	0	49.6
	1 Point	Evening	96.7	96.7	0	0	0	49.32	-44.9	0.2	-2.6	-0.2	0	0	1.5	50.7	0	0	0	49.6
	1 Point	Night	96.7	96.7	0	0	0	49.32	-44.9	0.2	-2.6	-0.2	0	0	1.5	50.7	0	0	0	49.6
	1 Point	Lden	96.7	96.7	0	0	0	49.32	-44.9	0.2	-2.6	-0.2	0	0	1.5	50.7	0	7	0	56.6
2	,	GF																		
	1 Point	Day	96.7	96.7	0	0	0	406.39	-63.2	0	-20.5	-1	0	0	0	12	0	0	0	11.7
	1 Point	Evening	96.7	96.7	0	0	0	406.39	-63.2	0	-20.5	-1	0	0	0	12	0	0	0	11.7
	1 Point	Night	96.7	96.7	0	0	0	406.39	-63.2	0	-20.5	-1	0	0	0	12	0	0	0	11.7
	1 Point	Lden	96.7	96.7	0	0	0	406.39	-63.2	0	-20.5	-1	0	0	0	12	0	7	0	18.7
3	,	GF																		
	1 Point	Day	96.7	96.7	0	0	0	399.16	-63	0	-19.7	-0.8	0	0	0	13.1	0	0	0	12.8
	1 Point	Evening	96.7	96.7	0	0	0	399.16	-63	0	-19.7	-0.8	0	0	0	13.1	0	0	0	12.8
	1 Point	Night	96.7	96.7	0	0	0	399.16	-63	0	-19.7	-0.8	0	0	0	13.1	0	0	0	12.8
	1 Point	Lden	96.7	96.7	0	0	0	399.16	-63	0	-19.7	-0.8	0	0	0	13.1	0	7	0	19.8
4	,	GF																		
	1 Point	Day	96.7	96.7	0	0	0	170.53	-55.6	0	-18.9	-0.4	-0.5	0	0	21.3	0	0	0	19.8
	1 Point	Evening	96.7	96.7	0	0	0	170.53	-55.6	0	-18.9	-0.4	-0.5	0	0	21.3	0	0	0	19.8
	1 Point	Night	96.7	96.7	0	0	0	170.53	-55.6	0	-18.9	-0.4	-0.5	0	0	21.3	0	0	0	19.8
	1 Point	Lden	96.7	96.7	0	0	0	170.53	-55.6	0	-18.9	-0.4	-0.5	0	0	21.3	0	7	0	26.8
5	,	GF																		
	1 Point	Day	96.7	96.7	0	0	0	298.63	-60.5	0	-18.1	-0.6	0	0	0	17.5	0	0	0	19
	1 Point	Evening	96.7	96.7	0	0	0	298.63	-60.5	0	-18.1	-0.6	0	0	0	17.5	0	0	0	19
	1 Point	Night	96.7	96.7	0	0	0	298.63	-60.5	0	-18.1	-0.6	0	0	0	17.5	0	0	0	19
	1 Point	Lden	96.7	96.7	0	0	0	298.63	-60.5	0	-18.1	-0.6	0	0	0	17.5	0	7	0	26
6	,	GF																		
	1 Point	Day	96.7	96.7	0	0	0	449.9	-64.1	0	-19.1	-0.9	0	0	0	12.6	0	0	0	12.5
	1 Point	Evening	96.7	96.7	0	0	0	449.9	-64.1	0	-19.1	-0.9	0	0	0	12.6	0	0	0	12.5
	1 Point	Night	96.7	96.7	0	0	0	449.9	-64.1	0	-19.1	-0.9	0	0	0	12.6	0	0	0	12.5
	1 Point	Lden	96.7	96.7	0	0	0	449.9	-64.1	0	-19.1	-0.9	0	0	0	12.6	0	7	0	19.5
7	,	GF																		
	1 Point	Day	96.7	96.7	0	0	0	660.89	-67.4	0	-19.1	-1.2	0	0	0	9	0	0	0	7.8
	1 Point	Evening	96.7	96.7	0	0	0	660.89	-67.4	0	-19.1	-1.2	0	0	0	9	0	0	0	7.8
	1 Point	Night	96.7	96.7	0	0	0	660.89	-67.4	0	-19.1	-1.2	0	0	0	9	0	0	0	7.8
	1 Point	Lden	96.7	96.7	0	0	0	660.89	-67.4	0	-19.1	-1.2	0	0	0	9	0	7	0	14.8
8	,	GF																		
	1 Point	Day	96.7	96.7	0	0	0	548.4	-65.8	0	-24.1	-1.4	-0.9	0	0	4.5	0	0	0	3.7
	1 Point	Evening	96.7	96.7	0	0	0	548.4	-65.8	0	-24.1	-1.4	-0.9	0	0	4.5	0	0	0	3.7
	1 Point	Night	96.7	96.7	0	0	0	548.4	-65.8	0	-24.1	-1.4	-0.9	0	0	4.5	0	0	0	3.7
	1 Point	Lden	96.7	96.7	0	0	0	548.4	-65.8	0	-24.1	-1.4	-0.9	0	0	4.5	0	7	0	10.7
9	,	GF																		
	1 Point	Day	96.7	96.7	0	0	0	564.13	-66	0	-18.2	-0.9	-0.4	0	2.3	13.5	0	0	0	12.8

	1 Point	Evening	96.7	96.7	0	0	0	564.13	-66	0	-18.2	-0.9	-0.4	0	2.3	13.5	0	0	0	12.8
	1 Point	Night	96.7	96.7	0	0	0	564.13	-66	0	-18.2	-0.9	-0.4	0	2.3	13.5	0	0	0	12.8
	1 Point	Lden	96.7	96.7	0	0	0	564.13	-66	0	-18.2	-0.9	-0.4	0	2.3	13.5	0	7	0	19.8
10		GF																		
	1 Point	Day	96.7	96.7	0	0	0	216.29	-57.7	1.7	0	-0.9	0	0	2.4	42.1	0	0	0	42.1
	1 Point	Evening	96.7	96.7	0	0	0	216.29	-57.7	1.7	0	-0.9	0	0	2.4	42.1	0	0	0	42.1
	1 Point	Night	96.7	96.7	0	0	0	216.29	-57.7	1.7	0	-0.9	0	0	2.4	42.1	0	0	0	42.1
	1 Point	Lden	96.7	96.7	0	0	0	216.29	-57.7	1.7	0	-0.9	0	0	2.4	42.1	0	7	0	49.1
11		GF																		
	1 Point	Day	96.7	96.7	0	0	0	395.88	-62.9	2.9	0	-1.6	-2.7	0	3.9	36.2	0	0	0	32.7
	1 Point	Evening	96.7	96.7	0	0	0	395.88	-62.9	2.9	0	-1.6	-2.7	0	3.9	36.2	0	0	0	32.7
	1 Point	Night	96.7	96.7	0	0	0	395.88	-62.9	2.9	0	-1.6	-2.7	0	3.9	36.2	0	0	0	32.7
	1 Point	Lden	96.7	96.7	0	0	0	395.88	-62.9	2.9	0	-1.6	-2.7	0	3.9	36.2	0	7	0	39.7
12		GF																		
	1 Point	Day	96.7	96.7	0	0	0	611.03	-66.7	0	-23.8	-1.1	0	0	0	5	0	0	0	4.6
	1 Point	Evening	96.7	96.7	0	0	0	611.03	-66.7	0	-23.8	-1.1	0	0	0	5	0	0	0	4.6
	1 Point	Night	96.7	96.7	0	0	0	611.03	-66.7	0	-23.8	-1.1	0	0	0	5	0	0	0	4.6
	1 Point	Lden	96.7	96.7	0	0	0	611.03	-66.7	0	-23.8	-1.1	0	0	0	5	0	7	0	11.6
13		GF																		
	1 Point	Day	96.7	96.7	0	0	0	821.75	-69.3	0	-17.5	-1.3	0	0	0	8.6	0	0	0	7.2
	1 Point	Evening	96.7	96.7	0	0	0	821.75	-69.3	0	-17.5	-1.3	0	0	0	8.6	0	0	0	7.2
	1 Point	Night	96.7	96.7	0	0	0	821.75	-69.3	0	-17.5	-1.3	0	0	0	8.6	0	0	0	7.2
	1 Point	Lden	96.7	96.7	0	0	0	821.75	-69.3	0	-17.5	-1.3	0	0	0	8.6	0	7	0	14.2
14		GF																		
	1 Point	Day	96.7	96.7	0	0	0	425.53	-63.6	0	-14.5	-0.6	0	0	2.5	20.5	0	0	0	18.5
	1 Point	Evening	96.7	96.7	0	0	0	425.53	-63.6	0	-14.5	-0.6	0	0	2.5	20.5	0	0	0	18.5
	1 Point	Night	96.7	96.7	0	0	0	425.53	-63.6	0	-14.5	-0.6	0	0	2.5	20.5	0	0	0	18.5
	1 Point	Lden	96.7	96.7	0	0	0	425.53	-63.6	0	-14.5	-0.6	0	0	2.5	20.5	0	7	0	25.5

	1 Point	Day	106.7	106.7	0	0	0	216.3	-57.7	1.7	0	-0.9	0	0	2.4	52.1	0	0	0	52.1
	1 Point	Evening	106.7	106.7	0	0	0	216.3	-57.7	1.7	0	-0.9	0	0	2.4	52.1	0	0	0	52.1
	1 Point	Night	106.7	106.7	0	0	0	216.3	-57.7	1.7	0	-0.9	0	0	2.4	52.1	0	0	0	52.1
	1 Point	Lden	106.7	106.7	0	0	0	216.3	-57.7	1.7	0	-0.9	0	0	2.4	52.1	0	7	0	59.1
11		GF																		
	1 Point	Day	106.7	106.7	0	0	0	395.9	-62.9	2.9	0	-1.6	-2.7	0	3.9	46.2	0	0	0	42.7
	1 Point	Evening	106.7	106.7	0	0	0	395.9	-62.9	2.9	0	-1.6	-2.7	0	3.9	46.2	0	0	0	42.7
	1 Point	Night	106.7	106.7	0	0	0	395.9	-62.9	2.9	0	-1.6	-2.7	0	3.9	46.2	0	0	0	42.7
	1 Point	Lden	106.7	106.7	0	0	0	395.9	-62.9	2.9	0	-1.6	-2.7	0	3.9	46.2	0	7	0	49.7
12		GF																		
	1 Point	Day	106.7	106.7	0	0	0	611	-66.7	0	-23.8	-1.1	0	0	0	15	0	0	0	14.6
	1 Point	Evening	106.7	106.7	0	0	0	611	-66.7	0	-23.8	-1.1	0	0	0	15	0	0	0	14.6
	1 Point	Night	106.7	106.7	0	0	0	611	-66.7	0	-23.8	-1.1	0	0	0	15	0	0	0	14.6
	1 Point	Lden	106.7	106.7	0	0	0	611	-66.7	0	-23.8	-1.1	0	0	0	15	0	7	0	21.6
13		GF																		
	1 Point	Day	106.7	106.7	0	0	0	821.7	-69.3	0	-17.5	-1.3	0	0	0	18.6	0	0	0	17.2
	1 Point	Evening	106.7	106.7	0	0	0	821.7	-69.3	0	-17.5	-1.3	0	0	0	18.6	0	0	0	17.2
	1 Point	Night	106.7	106.7	0	0	0	821.7	-69.3	0	-17.5	-1.3	0	0	0	18.6	0	0	0	17.2
	1 Point	Lden	106.7	106.7	0	0	0	821.7	-69.3	0	-17.5	-1.3	0	0	0	18.6	0	7	0	24.2
14		GF																		
	1 Point	Day	106.7	106.7	0	0	0	425.5	-63.6	0	-14.5	-0.6	0	0	2.5	30.5	0	0	0	28.5
	1 Point	Evening	106.7	106.7	0	0	0	425.5	-63.6	0	-14.5	-0.6	0	0	2.5	30.5	0	0	0	28.5
	1 Point	Night	106.7	106.7	0	0	0	425.5	-63.6	0	-14.5	-0.6	0	0	2.5	30.5	0	0	0	28.5
	1 Point	Lden	106.7	106.7	0	0	0	425.5	-63.6	0	-14.5	-0.6	0	0	2.5	30.5	0	7	0	35.5

Receiver spectra - speakers

No.	Name	Floor	Time slice	31 Hz	40 Hz	50 Hz	63 Hz	80 Hz	100 Hz	125 Hz	160 Hz	200 Hz	250 Hz	315 Hz	400 Hz	500 Hz	630 Hz	800 Hz	1 kHz	1 kHz	2 kHz	2 kHz	2 kHz	3 kHz
1	1 GF	Day		32.7	44.5	50.8	53.7	52.9	51.7	51.6	52.1	53.9	55.5	57.3	58.9	60.2	60.7	60.8	60	58.8	56.6	54.3	51.6	48.6
1	1 GF	Evening		32.7	44.5	50.8	53.7	52.9	51.7	51.6	52.1	53.9	55.5	57.3	58.9	60.2	60.7	60.8	60	58.8	56.6	54.3	51.6	48.6
1	1 GF	Night		32.7	44.5	50.8	53.7	52.9	51.7	51.6	52.1	53.9	55.5	57.3	58.9	60.2	60.7	60.8	60	58.8	56.6	54.3	51.6	48.6
1	1 GF	Lden		39.7	51.5	57.8	60.7	59.9	58.7	58.6	59.1	61	62.5	64.3	65.9	67.2	67.8	67.8	67	65.8	63.6	61.3	58.6	55.6
2	2 GF	Day		3.6	14.4	19.9	21.9	20.2	18.1	17.2	16.8	17.8	18.5	19.4	20	20.5	20.9	21.1	20.2	18.2	16.3	14.2	10.9	6.3
2	2 GF	Evening		3.6	14.4	19.9	21.9	20.2	18.1	17.2	16.8	17.8	18.5	19.4	20	20.5	20.9	21.1	20.2	18.2	16.3	14.2	10.9	6.3
2	2 GF	Night		3.6	14.4	19.9	21.9	20.2	18.1	17.2	16.8	17.8	18.5	19.4	20	20.5	20.9	21.1	20.2	18.2	16.3	14.2	10.9	6.3
2	2 GF	Lden		10.7	21.4	26.9	28.9	27.2	25.1	24.2	23.8	24.8	25.5	26.4	27	27.5	27.9	28.1	27.2	25.2	23.3	21.3	17.9	13.3
3	3 GF	Day		7.2	17.9	23	24.6	22.3	19.8	18.6	18	18.9	19.4	20.1	20.7	21.1	21	20.2	18.5	16.5	15.1	14.5	11.2	6.6
3	3 GF	Evening		7.2	17.9	23	24.6	22.3	19.8	18.6	18	18.9	19.4	20.1	20.7	21.1	21	20.2	18.5	16.5	15.1	14.5	11.2	6.6
3	3 GF	Night		7.2	17.9	23	24.6	22.3	19.8	18.6	18	18.9	19.4	20.1	20.7	21.1	21	20.2	18.5	16.5	15.1	14.5	11.2	6.6
3	3 GF	Lden		14.2	24.9	30	31.6	29.3	26.8	25.6	25.1	25.9	26.4	27.1	27.7	28.1	28	27.2	25.5	23.5	22.1	21.5	18.2	13.6
4	4 GF	Day		13.6	24.2	29.5	31.2	29.1	26.4	25	24.2	24.8	25.2	26	26.1	27	28.4	28.5	27.9	26.8	24.9	23	20.8	17.8
4	4 GF	Evening		13.6	24.2	29.5	31.2	29.1	26.4	25	24.2	24.8	25.2	26	26.1	27	28.4	28.5	27.9	26.8	24.9	23	20.8	17.8
4	4 GF	Night		13.6	24.2	29.5	31.2	29.1	26.4	25	24.2	24.8	25.2	26	26.1	27	28.4	28.5	27.9	26.8	24.9	23	20.8	17.8
4	4 GF	Lden		20.6	31.3	36.5	38.2	36.1	33.4	32	31.2	31.8	32.2	33	33.2	34	35.4	35.5	34.9	33.8	31.9	30.1	27.8	24.8
5	5 GF	Day		10.7	21.7	27.3	29.4	27.8	25.8	24.9	24.6	25.6	26.3	27.3	28	28.5	28.2	27.4	25.8	23.5	20.9	18.4	15.4	11.4
5	5 GF	Evening		10.7	21.7	27.3	29.4	27.8	25.8	24.9	24.6	25.6	26.3	27.3	28	28.5	28.2	27.4	25.8	23.5	20.9	18.4	15.4	11.4
5	5 GF	Night		10.7	21.7	27.3	29.4	27.8	25.8	24.9	24.6	25.6	26.3	27.3	28	28.5	28.2	27.4	25.8	23.5	20.9	18.4	15.4	11.4
5	5 GF	Lden		17.7	28.7	34.3	36.4	34.8	32.8	31.9	31.6	32.6	33.3	34.3	35	35.5	35.2	34.4	32.8	30.5	27.9	25.4	22.4	18.4
6	6 GF	Day		5.4	16.3	21.8	23.9	22.3	20.2	19.2	18.6	17.3	16	16.9	20.3	22	22	21.1	19.3	17.1	14.7	11.9	8.3	3.2
6	6 GF	Evening		5.4	16.3	21.8	23.9	22.3	20.2	19.2	18.6	17.3	16	16.9	20.3	22	22	21.1	19.3	17.1	14.7	11.9	8.3	3.2
6	6 GF	Night		5.4	16.3	21.8	23.9	22.3	20.2	19.2	18.6	17.3	16	16.9	20.3	22	22	21.1	19.3	17.1	14.7	11.9	8.3	3.2
6	6 GF	Lden		12.4	23.3	28.8	31	29.3	27.2	26.2	25.6	24.3	23	23.9	27.3	29	29	28.1	26.3	24.1	21.7	18.9	15.3	10.2
7	7 GF	Day		0.9	11.9	17.5	19.6	18	15.9	15	12.6	10.1	8.3	10.3	14.5	18.1	17.7	16.7	14.7	12.4	9.8	6.5	2	-4.4
7	7 GF	Evening		0.9	11.9	17.5	19.6	18	15.9	15	12.6	10.1	8.3	10.3	14.5	18.1	17.7	16.7	14.7	12.4	9.8	6.5	2	-4.4
7	7 GF	Night		0.9	11.9	17.5	19.6	18	15.9	15	12.6	10.1	8.3	10.3	14.5	18.1	17.7	16.7	14.7	12.4	9.8	6.5	2	-4.4
7	7 GF	Lden		7.9	18.9	24.5	26.6	25	23	22	19.6	17.1	15.3	17.3	21.5	25.1	24.7	23.7	21.8	19.4	16.8	13.5	9	2.6
8	8 GF	Day		-2.4	8.4	13.8	15.9	14.2	11.8	10.8	10.4	11.1	11.7	10.9	8.8	8.2	7.4	7.7	9.2	10.2	9.9	7	3	-2.9
8	8 GF	Evening		-2.4	8.4	13.8	15.9	14.2	11.8	10.8	10.4	11.1	11.7	10.9	8.8	8.2	7.4	7.7	9.2	10.2	9.9	7	3	-2.9
8	8 GF	Night		-2.4	8.4	13.8	15.9	14.2	11.8	10.8	10.4	11.1	11.7	10.9	8.8	8.2	7.4	7.7	9.2	10.2	9.9	7	3	-2.9
8	8 GF	Lden		4.6	15.4	20.8	22.9	21.2	18.8	17.8	17.4	18.1	18.8	18	15.8	15.2	14.4	14.8	16.2	17.2	16.9	14	10	4.1
9	9 GF	Day		7.3	18.1	23.5	25.3	23	20.3	19	18.4	18.9	19.3	19.9	20.2	20.8	20.4	19.3	18	16.4	13.7	10.7	6.6	0.7
9	9 GF	Evening		7.3	18.1	23.5	25.3	23	20.3	19	18.4	18.9	19.3	19.9	20.2	20.8	20.4	19.3	18	16.4	13.7	10.7	6.6	0.7
9	9 GF	Night		7.3	18.1	23.5	25.3	23	20.3	19	18.4	18.9	19.3	19.9	20.2	20.8	20.4	19.3	18	16.4	13.7	10.7	6.6	0.7
9	9 GF	Lden		14.3	25.1	30.6	32.3	30	27.3	26	25.4	25.9	26.3	26.9	27.2	27.9	27.4	26.3	25	23.4	20.7	17.7	13.6	7.7
10	10 GF	Day		23.6	35.4	41.8	44.8	44.1	43	43	43.7	45.7	47.3	49.3	51	52.5	53.1	53.5	52.9	51.7	50	48	45.5	42.3
10	10 GF	Evening		23.6	35.4	41.8	44.8	44.1	43	43	43.7	45.7	47.3	49.3	51	52.5	53.1	53.5	52.9	51.7	50	48	45.5	42.3
10	10 GF	Night		23.6	35.4	41.8	44.8	44.1	43	43	43.7	45.7	47.3	49.3	51	52.5	53.1	53.5	52.9	51.7	50	48	45.5	42.3
10	10 GF	Lden		30.6	42.4	48.8	51.8	51.2	50	50	50.7	52.7	54.3	56.3	58	59.5	60.1	60.6	59.9	58.7	57	55	52.6	49.3
11	11 GF	Day		18.7	30.7	37	40	39.3	37.6	37.6	38.3	39.7	41.3	41.1	40.8	40.4	39.8	40.5	42.2	43.9	40.8	38.3	34.9	29.8
11	11 GF	Evening		18.7	30.7	37	40	39.3	37.6	37.6	38.3	39.7	41.3	41.1	40.8	40.4	39.8	40.5	42.2	43.9	40.8	38.3	34.9	29.8
11	11 GF	Night		18.7	30.7	37	40	39.3	37.6	37.6	38.3	39.7	41.3	41.1	40.8	40.4	39.8	40.5	42.2	43.9	40.8	38.3	34.9	29.8
11	11 GF	Lden		25.7	37.7	44.1	47.1	46.4	44.7	44.6	45.3	46.7	48.3	48.1	47.8	47.4	46.9	47.5	49.2	50.9	47.8	45.3	42	36.8
12	12 GF	Day		-2.9	7.9	13.3	15.4	13.7	11.5	10.6	10.2	11.1	11.7	12.6	13.5	14.5	14.3	13.2	10.8	7.6	3.7	-0.4	-5.5	-12.3
12	12 GF	Evening		-2.9	7.9	13.3	15.4	13.7	11.5	10.6	10.2	11.1	11.7	12.6	13.5	14.5	14.3	13.2	10.8	7.6	3.7	-0.4	-5.5	-12.3
12	12 GF	Night		-2.9	7.9	13.3	15.4	13.7	11.5	10.6	10.2	11.1	11.7	12.6	13.5	14.5	14.3	13.2	10.8	7.6	3.7	-0.4	-5.5	-12.3
12	12 GF	Lden		4.1	14.9	20.3	22.4	20.7	18.6	17.6	17.2	18.1	18.7	19.6	20.5	21.6	21.3	20.2	17.8	14.6	10.8	6.7	1.6	-5.3

13	13 GF	Day	2.3	13.2	18.8	20.8	19	16.6	15.4	14.4	11.3	7.2	4.6	6.1	9.7	13	13.5	13	11.7	8.4	4.3	-1.3	-9.4
13	13 GF	Evening	2.3	13.2	18.8	20.8	19	16.6	15.4	14.4	11.3	7.2	4.6	6.1	9.7	13	13.5	13	11.7	8.4	4.3	-1.3	-9.4
13	13 GF	Night	2.3	13.2	18.8	20.8	19	16.6	15.4	14.4	11.3	7.2	4.6	6.1	9.7	13	13.5	13	11.7	8.4	4.3	-1.3	-9.4
13	13 GF	Lden	9.3	20.2	25.8	27.8	26	23.6	22.4	21.4	18.3	14.2	11.6	13.1	16.7	20	20.6	20	18.7	15.5	11.3	5.7	-2.4
14	14 GF	Day	11.4	22.3	27.6	29.4	27.6	25.5	24.6	24.3	25.2	25.9	26.8	27.5	28	27.6	26.8	25	22.6	17.1	9.4	0.4	-9.9
14	14 GF	Evening	11.4	22.3	27.6	29.4	27.6	25.5	24.6	24.3	25.2	25.9	26.8	27.5	28	27.6	26.8	25	22.6	17.1	9.4	0.4	-9.9
14	14 GF	Night	11.4	22.3	27.6	29.4	27.6	25.5	24.6	24.3	25.2	25.9	26.8	27.5	28	27.6	26.8	25	22.6	17.1	9.4	0.4	-9.9
14	14 GF	Lden	18.4	29.3	34.6	36.4	34.6	32.5	31.6	31.3	32.2	32.9	33.8	34.5	35	34.7	33.8	32	29.6	24.1	16.4	7.4	-2.9

4 kHz	5 kHz	6 kHz	8 kHz	10 kHz	12 kHz	16 kHz	20 kHz
45.5	42	37.5	31.7	23.2	10.6	-9.7	-29.3
45.5	42	37.5	31.7	23.2	10.6	-9.7	-29.3
45.5	42	37.5	31.7	23.2	10.6	-9.7	-29.3
52.5	49	44.5	38.7	30.3	17.6	-2.7	-22.3
0	-9	-22.5	-41.9	-70.5	-111.6	0	0
0	-9	-22.5	-41.9	-70.5	-111.6	0	0
0	-9	-22.5	-41.9	-70.5	-111.6	0	0
7.1	-2	-15.5	-34.9	-63.5	-104.6	0	0
0.4	-8.5	-21.8	-40.9	-69.1	-109.6	0	0
0.4	-8.5	-21.8	-40.9	-69.1	-109.6	0	0
0.4	-8.5	-21.8	-40.9	-69.1	-109.6	0	0
7.4	-1.5	-14.8	-33.9	-62.1	-102.6	0	0
14.1	9.2	1.6	-8.4	-23.3	-45.6	-78.3	-113.7
14.1	9.2	1.6	-8.4	-23.3	-45.6	-78.3	-113.7
14.1	9.2	1.6	-8.4	-23.3	-45.6	-78.3	-113.7
21.1	16.2	8.6	-1.4	-16.3	-38.5	-71.3	-106.7
6.2	-1.1	-11.8	-27	-49.4	-81.7	0	0
6.2	-1.1	-11.8	-27	-49.4	-81.7	0	0
6.2	-1.1	-11.8	-27	-49.4	-81.7	0	0
13.2	5.9	-4.8	-20	-42.3	-74.7	0	0
-3.6	-13.5	-28.3	-49.5	-80.7	0	0	0
-3.6	-13.5	-28.3	-49.5	-80.7	0	0	0
-3.6	-13.5	-28.3	-49.5	-80.7	0	0	0
3.4	-6.5	-21.3	-42.5	-73.7	-118.5	0	0
-13.6	-27.1	-47.3	-76.9	0	0	0	0
-13.6	-27.1	-47.3	-76.9	0	0	0	0
-13.6	-27.1	-47.3	-76.9	0	0	0	0
-6.6	-20.1	-40.3	-69.9	-113.3	0	0	0
-10.8	-22.3	-40.3	-65.3	-102.2	0	0	0
-10.8	-22.3	-40.3	-65.3	-102.2	0	0	0
-10.8	-22.3	-40.3	-65.3	-102.2	0	0	0
-3.8	-15.3	-33.3	-58.3	-95.2	0	0	0
-7.4	-19.4	-37.6	-63.5	-101.4	0	0	0
-7.4	-19.4	-37.6	-63.5	-101.4	0	0	0
-7.4	-19.4	-37.6	-63.5	-101.4	0	0	0
-0.4	-12.4	-30.6	-56.4	-94.4	0	0	0
38.1	32.3	23.9	12	-5.7	-31.5	-69.4	-111.2
38.1	32.3	23.9	12	-5.7	-31.5	-69.4	-111.2
38.1	32.3	23.9	12	-5.7	-31.5	-69.4	-111.2
45.1	39.3	30.9	19	1.3	-24.5	-62.4	-104.2
23.6	14.5	-0.4	-19.6	-48	-90.2	0	0
23.6	14.5	-0.4	-19.6	-48	-90.2	0	0
23.6	14.5	-0.4	-19.6	-48	-90.2	0	0
30.6	21.6	6.6	-12.6	-41	-83.2	0	0
-21.7	-35	-54.6	-82.7	0	0	0	0
-21.7	-35	-54.6	-82.7	0	0	0	0
-21.7	-35	-54.6	-82.7	0	0	0	0
-14.7	-28	-47.6	-75.7	-116.7	0	0	0

-20.6	-37.2	-62.4	-98.5	0	0	0	0
-20.6	-37.2	-62.4	-98.5	0	0	0	0
-20.6	-37.2	-62.4	-98.5	0	0	0	0
-13.6	-30.2	-55.4	-91.5	0	0	0	0
-19.3	-29.9	-44.8	-65.9	-96.3	0	0	0
-19.3	-29.9	-44.8	-65.9	-96.3	0	0	0
-19.3	-29.9	-44.8	-65.9	-96.3	0	0	0
-12.3	-22.9	-37.8	-58.8	-89.3	0	0	0

Receiver spectra - speakers 110

No.	Name	Floor	Time slice	31 Hz	40 Hz	50 Hz	63 Hz	80 Hz	100 Hz	125 Hz	160 Hz	200 Hz	250 Hz	315 Hz	400 Hz	500 Hz	630 Hz	800 Hz	1 kHz
1	1 GF	Day	12.7	24.5	30.8	33.7	32.9	31.7	31.6	32.1	33.9	35.5	37.3	38.9	40.2	40.7	40.8	40	
1	1 GF	Evening	12.7	24.5	30.8	33.7	32.9	31.7	31.6	32.1	33.9	35.5	37.3	38.9	40.2	40.7	40.8	40	
1	1 GF	Night	12.7	24.5	30.8	33.7	32.9	31.7	31.6	32.1	33.9	35.5	37.3	38.9	40.2	40.7	40.8	40	
1	1 GF	Lden	19.7	31.5	37.8	40.7	39.9	38.7	38.6	39.1	41	42.5	44.3	45.9	47.2	47.8	47.8	47	
2	2 GF	Day	-16.4	-5.6	-0.1	1.9	0.2	-1.9	-2.8	-3.2	-2.2	-1.5	-0.6	0	0.5	0.9	1.1	0.2	
2	2 GF	Evening	-16.4	-5.6	-0.1	1.9	0.2	-1.9	-2.8	-3.2	-2.2	-1.5	-0.6	0	0.5	0.9	1.1	0.2	
2	2 GF	Night	-16.4	-5.6	-0.1	1.9	0.2	-1.9	-2.8	-3.2	-2.2	-1.5	-0.6	0	0.5	0.9	1.1	0.2	
2	2 GF	Lden	-9.3	1.4	6.9	8.9	7.2	5.1	4.2	3.8	4.8	5.5	6.4	7	7.5	7.9	8.1	7.2	
3	3 GF	Day	-12.8	-2.1	3	4.6	2.3	-0.2	-1.4	-2	-1.1	-0.6	0.1	0.7	1.1	1	0.2	-1.5	
3	3 GF	Evening	-12.8	-2.1	3	4.6	2.3	-0.2	-1.4	-2	-1.1	-0.6	0.1	0.7	1.1	1	0.2	-1.5	
3	3 GF	Night	-12.8	-2.1	3	4.6	2.3	-0.2	-1.4	-2	-1.1	-0.6	0.1	0.7	1.1	1	0.2	-1.5	
3	3 GF	Lden	-5.8	4.9	10	11.6	9.3	6.8	5.6	5.1	5.9	6.4	7.1	7.7	8.1	8	7.2	5.5	
4	4 GF	Day	-6.4	4.2	9.5	11.2	9.1	6.4	5	4.2	4.8	5.2	6	6.1	7	8.4	8.5	7.9	
4	4 GF	Evening	-6.4	4.2	9.5	11.2	9.1	6.4	5	4.2	4.8	5.2	6	6.1	7	8.4	8.5	7.9	
4	4 GF	Night	-6.4	4.2	9.5	11.2	9.1	6.4	5	4.2	4.8	5.2	6	6.1	7	8.4	8.5	7.9	
4	4 GF	Lden	0.6	11.3	16.5	18.2	16.1	13.4	12	11.2	11.8	12.2	13	13.2	14	15.4	15.5	14.9	
5	5 GF	Day	-9.3	1.7	7.3	9.4	7.8	5.8	4.9	4.6	5.6	6.3	7.3	8	8.5	8.2	7.4	5.8	
5	5 GF	Evening	-9.3	1.7	7.3	9.4	7.8	5.8	4.9	4.6	5.6	6.3	7.3	8	8.5	8.2	7.4	5.8	
5	5 GF	Night	-9.3	1.7	7.3	9.4	7.8	5.8	4.9	4.6	5.6	6.3	7.3	8	8.5	8.2	7.4	5.8	
5	5 GF	Lden	-2.3	8.7	14.3	16.4	14.8	12.8	11.9	11.6	12.6	13.3	14.3	15	15.5	15.2	14.4	12.8	
6	6 GF	Day	-14.6	-3.7	1.8	3.9	2.3	0.2	-0.8	-1.4	-2.7	-4	-3.1	0.3	2	2	1.1	-0.7	
6	6 GF	Evening	-14.6	-3.7	1.8	3.9	2.3	0.2	-0.8	-1.4	-2.7	-4	-3.1	0.3	2	2	1.1	-0.7	
6	6 GF	Night	-14.6	-3.7	1.8	3.9	2.3	0.2	-0.8	-1.4	-2.7	-4	-3.1	0.3	2	2	1.1	-0.7	
6	6 GF	Lden	-7.6	3.3	8.8	11	9.3	7.2	6.2	5.6	4.3	3	3.9	7.3	9	9	8.1	6.3	
7	7 GF	Day	-19.1	-8.1	-2.5	-0.4	-2	-4.1	-5	-7.4	-9.9	-11.7	-9.7	-5.5	-1.9	-2.3	-3.3	-5.3	
7	7 GF	Evening	-19.1	-8.1	-2.5	-0.4	-2	-4.1	-5	-7.4	-9.9	-11.7	-9.7	-5.5	-1.9	-2.3	-3.3	-5.3	
7	7 GF	Night	-19.1	-8.1	-2.5	-0.4	-2	-4.1	-5	-7.4	-9.9	-11.7	-9.7	-5.5	-1.9	-2.3	-3.3	-5.3	
7	7 GF	Lden	-12.1	-1.1	4.5	6.6	5	3	2	-0.4	-2.9	-4.7	-2.7	1.5	5.1	4.7	3.7	1.8	
8	8 GF	Day	-22.4	-11.6	-6.2	-4.1	-5.8	-8.2	-9.2	-9.6	-8.9	-8.3	-9.1	-11.2	-11.8	-12.6	-12.3	-10.8	
8	8 GF	Evening	-22.4	-11.6	-6.2	-4.1	-5.8	-8.2	-9.2	-9.6	-8.9	-8.3	-9.1	-11.2	-11.8	-12.6	-12.3	-10.8	
8	8 GF	Night	-22.4	-11.6	-6.2	-4.1	-5.8	-8.2	-9.2	-9.6	-8.9	-8.3	-9.1	-11.2	-11.8	-12.6	-12.3	-10.8	
8	8 GF	Lden	-15.4	-4.6	0.8	2.9	1.2	-1.2	-2.2	-2.6	-1.9	-1.2	-2	-4.2	-4.8	-5.6	-5.2	-3.8	
9	9 GF	Day	-12.7	-1.9	3.5	5.3	3	0.3	-1	-1.6	-1.1	-0.7	-0.1	0.2	0.8	0.4	-0.7	-2	

9	9 GF	Evening	-12.7	-1.9	3.5	5.3	3	0.3	-1	-1.6	-1.1	-0.7	-0.1	0.2	0.8	0.4	-0.7	-2
9	9 GF	Night	-12.7	-1.9	3.5	5.3	3	0.3	-1	-1.6	-1.1	-0.7	-0.1	0.2	0.8	0.4	-0.7	-2
9	9 GF	Lden	-5.7	5.1	10.6	12.3	10	7.3	6	5.4	5.9	6.3	6.9	7.2	7.9	7.4	6.3	5
10	10 GF	Day	3.6	15.4	21.8	24.8	24.1	23	23	23.7	25.7	27.3	29.3	31	32.5	33.1	33.5	32.9
10	10 GF	Evening	3.6	15.4	21.8	24.8	24.1	23	23	23.7	25.7	27.3	29.3	31	32.5	33.1	33.5	32.9
10	10 GF	Night	3.6	15.4	21.8	24.8	24.1	23	23	23.7	25.7	27.3	29.3	31	32.5	33.1	33.5	32.9
10	10 GF	Lden	10.6	22.4	28.8	31.8	31.2	30	30	30.7	32.7	34.3	36.3	38	39.5	40.1	40.6	39.9
11	11 GF	Day	-1.3	10.7	17	20	19.3	17.6	17.6	18.3	19.7	21.3	21.1	20.8	20.4	19.8	20.5	22.2
11	11 GF	Evening	-1.3	10.7	17	20	19.3	17.6	17.6	18.3	19.7	21.3	21.1	20.8	20.4	19.8	20.5	22.2
11	11 GF	Night	-1.3	10.7	17	20	19.3	17.6	17.6	18.3	19.7	21.3	21.1	20.8	20.4	19.8	20.5	22.2
11	11 GF	Lden	5.7	17.7	24.1	27.1	26.4	24.7	24.6	25.3	26.7	28.3	28.1	27.8	27.4	26.9	27.5	29.2
12	12 GF	Day	-22.9	-12.1	-6.7	-4.6	-6.3	-8.5	-9.4	-9.8	-8.9	-8.3	-7.4	-6.5	-5.5	-5.7	-6.8	-9.2
12	12 GF	Evening	-22.9	-12.1	-6.7	-4.6	-6.3	-8.5	-9.4	-9.8	-8.9	-8.3	-7.4	-6.5	-5.5	-5.7	-6.8	-9.2
12	12 GF	Night	-22.9	-12.1	-6.7	-4.6	-6.3	-8.5	-9.4	-9.8	-8.9	-8.3	-7.4	-6.5	-5.5	-5.7	-6.8	-9.2
12	12 GF	Lden	-15.9	-5.1	0.3	2.4	0.7	-1.4	-2.4	-2.8	-1.9	-1.3	-0.4	0.5	1.6	1.3	0.2	-2.2
13	13 GF	Day	-17.7	-6.8	-1.2	0.8	-1	-3.4	-4.6	-5.6	-8.7	-12.8	-15.4	-13.9	-10.3	-7	-6.5	-7
13	13 GF	Evening	-17.7	-6.8	-1.2	0.8	-1	-3.4	-4.6	-5.6	-8.7	-12.8	-15.4	-13.9	-10.3	-7	-6.5	-7
13	13 GF	Night	-17.7	-6.8	-1.2	0.8	-1	-3.4	-4.6	-5.6	-8.7	-12.8	-15.4	-13.9	-10.3	-7	-6.5	-7
13	13 GF	Lden	-10.7	0.2	5.8	7.8	6	3.6	2.4	1.4	-1.7	-5.8	-8.4	-6.9	-3.3	0	0.6	0
14	14 GF	Day	-8.6	2.3	7.6	9.4	7.6	5.5	4.6	4.3	5.2	5.9	6.8	7.5	8	7.6	6.8	5
14	14 GF	Evening	-8.6	2.3	7.6	9.4	7.6	5.5	4.6	4.3	5.2	5.9	6.8	7.5	8	7.6	6.8	5
14	14 GF	Night	-8.6	2.3	7.6	9.4	7.6	5.5	4.6	4.3	5.2	5.9	6.8	7.5	8	7.6	6.8	5
14	14 GF	Lden	-1.6	9.3	14.6	16.4	14.6	12.5	11.6	11.3	12.2	12.9	13.8	14.5	15	14.7	13.8	12

1 kHz	2 kHz	2 kHz	2 kHz	3 kHz	4 kHz	5 kHz	6 kHz	8 kHz	10 kHz	12 kHz	16 kHz	20 kHz
38.8	36.6	34.3	31.6	28.6	25.5	22	17.5	11.7	3.2	-9.4	-29.7	-49.3
38.8	36.6	34.3	31.6	28.6	25.5	22	17.5	11.7	3.2	-9.4	-29.7	-49.3
38.8	36.6	34.3	31.6	28.6	25.5	22	17.5	11.7	3.2	-9.4	-29.7	-49.3
45.8	43.6	41.3	38.6	35.6	32.5	29	24.5	18.7	10.3	-2.4	-22.7	-42.3
-1.8	-3.7	-5.8	-9.1	-13.7	-20	-29	-42.5	-61.9	-90.5	0	0	0
-1.8	-3.7	-5.8	-9.1	-13.7	-20	-29	-42.5	-61.9	-90.5	0	0	0
-1.8	-3.7	-5.8	-9.1	-13.7	-20	-29	-42.5	-61.9	-90.5	0	0	0
5.2	3.3	1.3	-2.1	-6.7	-12.9	-22	-35.5	-54.9	-83.5	0	0	0
-3.5	-4.9	-5.5	-8.8	-13.4	-19.6	-28.5	-41.8	-60.9	-89.1	0	0	0
-3.5	-4.9	-5.5	-8.8	-13.4	-19.6	-28.5	-41.8	-60.9	-89.1	0	0	0
-3.5	-4.9	-5.5	-8.8	-13.4	-19.6	-28.5	-41.8	-60.9	-89.1	0	0	0
3.5	2.1	1.5	-1.8	-6.4	-12.6	-21.5	-34.8	-53.9	-82.1	0	0	0
6.8	4.9	3	0.8	-2.2	-5.9	-10.8	-18.4	-28.4	-43.3	-65.6	-98.3	0
6.8	4.9	3	0.8	-2.2	-5.9	-10.8	-18.4	-28.4	-43.3	-65.6	-98.3	0
6.8	4.9	3	0.8	-2.2	-5.9	-10.8	-18.4	-28.4	-43.3	-65.6	-98.3	0
13.8	11.9	10.1	7.8	4.8	1.1	-3.8	-11.4	-21.4	-36.3	-58.5	-91.3	0
3.5	0.9	-1.6	-4.6	-8.6	-13.8	-21.1	-31.8	-47	-69.4	-102	0	0
3.5	0.9	-1.6	-4.6	-8.6	-13.8	-21.1	-31.8	-47	-69.4	-102	0	0
3.5	0.9	-1.6	-4.6	-8.6	-13.8	-21.1	-31.8	-47	-69.4	-102	0	0
10.5	7.9	5.4	2.4	-1.6	-6.8	-14.1	-24.8	-40	-62.3	-94.7	0	0
-2.9	-5.3	-8.1	-11.7	-16.8	-23.6	-33.5	-48.3	-69.5	-101	0	0	0
-2.9	-5.3	-8.1	-11.7	-16.8	-23.6	-33.5	-48.3	-69.5	-101	0	0	0
-2.9	-5.3	-8.1	-11.7	-16.8	-23.6	-33.5	-48.3	-69.5	-101	0	0	0
4.1	1.7	-1.1	-4.7	-9.8	-16.6	-26.5	-41.3	-62.5	-93.7	0	0	0
-7.6	-10.2	-13.5	-18	-24.4	-33.6	-47.1	-67.3	-96.9	0	0	0	0
-7.6	-10.2	-13.5	-18	-24.4	-33.6	-47.1	-67.3	-96.9	0	0	0	0
-7.6	-10.2	-13.5	-18	-24.4	-33.6	-47.1	-67.3	-96.9	0	0	0	0
-0.6	-3.2	-6.5	-11	-17.4	-26.6	-40.1	-60.3	-89.9	0	0	0	0
-9.8	-10.1	-13	-17	-22.9	-30.8	-42.3	-60.3	-85.3	0	0	0	0
-9.8	-10.1	-13	-17	-22.9	-30.8	-42.3	-60.3	-85.3	0	0	0	0
-9.8	-10.1	-13	-17	-22.9	-30.8	-42.3	-60.3	-85.3	0	0	0	0
-2.8	-3.1	-6	-10	-15.9	-23.8	-35.3	-53.3	-78.3	-115	0	0	0
-3.6	-6.3	-9.3	-13.4	-19.3	-27.4	-39.4	-57.6	-83.5	0	0	0	0

-3.6	-6.3	-9.3	-13.4	-19.3	-27.4	-39.4	-57.6	-83.5	0	0	0	0
-3.6	-6.3	-9.3	-13.4	-19.3	-27.4	-39.4	-57.6	-83.5	0	0	0	0
3.4	0.7	-2.3	-6.4	-12.3	-20.4	-32.4	-50.6	-76.4	-114	0	0	0
31.7	30	28	25.5	22.3	18.1	12.3	3.9	-8	-25.7	-51.5	-89.4	0
31.7	30	28	25.5	22.3	18.1	12.3	3.9	-8	-25.7	-51.5	-89.4	0
31.7	30	28	25.5	22.3	18.1	12.3	3.9	-8	-25.7	-51.5	-89.4	0
38.7	37	35	32.6	29.3	25.1	19.3	10.9	-1	-18.7	-44.5	-82.4	0
23.9	20.8	18.3	14.9	9.8	3.6	-5.5	-20.4	-39.6	-68	-110	0	0
23.9	20.8	18.3	14.9	9.8	3.6	-5.5	-20.4	-39.6	-68	-110	0	0
23.9	20.8	18.3	14.9	9.8	3.6	-5.5	-20.4	-39.6	-68	-110	0	0
30.9	27.8	25.3	22	16.8	10.6	1.6	-13.4	-32.6	-61	-103	0	0
-12.4	-16.3	-20.4	-25.5	-32.3	-41.7	-55	-74.6	-103	0	0	0	0
-12.4	-16.3	-20.4	-25.5	-32.3	-41.7	-55	-74.6	-103	0	0	0	0
-12.4	-16.3	-20.4	-25.5	-32.3	-41.7	-55	-74.6	-103	0	0	0	0
-5.4	-9.2	-13.3	-18.4	-25.3	-34.7	-48	-67.6	-95.7	0	0	0	0
-8.3	-11.6	-15.7	-21.3	-29.4	-40.6	-57.2	-82.4	-119	0	0	0	0
-8.3	-11.6	-15.7	-21.3	-29.4	-40.6	-57.2	-82.4	-119	0	0	0	0
-8.3	-11.6	-15.7	-21.3	-29.4	-40.6	-57.2	-82.4	-119	0	0	0	0
-1.3	-4.5	-8.7	-14.3	-22.4	-33.6	-50.2	-75.4	-112	0	0	0	0
2.6	-2.9	-10.6	-19.6	-29.9	-39.3	-49.9	-64.8	-85.9	-116	0	0	0
2.6	-2.9	-10.6	-19.6	-29.9	-39.3	-49.9	-64.8	-85.9	-116	0	0	0
2.6	-2.9	-10.6	-19.6	-29.9	-39.3	-49.9	-64.8	-85.9	-116	0	0	0
9.6	4.1	-3.6	-12.6	-22.9	-32.3	-42.9	-57.8	-78.8	-109	0	0	0

Receiver spectra - speakers 120

No.	Name	Floor	Time slice	31 Hz	40 Hz	50 Hz	63 Hz	80 Hz	100 Hz	125 Hz	160 Hz	200 Hz	250 Hz	315 Hz	400 Hz	500 Hz	630 Hz	800 Hz
1	1 GF	Day		22.7	34.5	40.8	43.7	42.9	41.7	41.6	42.1	43.9	45.5	47.3	48.9	50.2	50.7	50.8
1	1 GF	Evening		22.7	34.5	40.8	43.7	42.9	41.7	41.6	42.1	43.9	45.5	47.3	48.9	50.2	50.7	50.8
1	1 GF	Night		22.7	34.5	40.8	43.7	42.9	41.7	41.6	42.1	43.9	45.5	47.3	48.9	50.2	50.7	50.8
1	1 GF	Lden		29.7	41.5	47.8	50.7	49.9	48.7	48.6	49.1	51	52.5	54.3	55.9	57.2	57.8	57.8
2	2 GF	Day		-6.4	4.4	9.9	11.9	10.2	8.1	7.2	6.8	7.8	8.5	9.4	10	10.5	10.9	11.1
2	2 GF	Evening		-6.4	4.4	9.9	11.9	10.2	8.1	7.2	6.8	7.8	8.5	9.4	10	10.5	10.9	11.1
2	2 GF	Night		-6.4	4.4	9.9	11.9	10.2	8.1	7.2	6.8	7.8	8.5	9.4	10	10.5	10.9	11.1
2	2 GF	Lden		0.7	11.4	16.9	18.9	17.2	15.1	14.2	13.8	14.8	15.5	16.4	17	17.5	17.9	18.1
3	3 GF	Day		-2.8	7.9	13	14.6	12.3	9.8	8.6	8	8.9	9.4	10.1	10.7	11.1	11	10.2
3	3 GF	Evening		-2.8	7.9	13	14.6	12.3	9.8	8.6	8	8.9	9.4	10.1	10.7	11.1	11	10.2
3	3 GF	Night		-2.8	7.9	13	14.6	12.3	9.8	8.6	8	8.9	9.4	10.1	10.7	11.1	11	10.2
3	3 GF	Lden		4.2	14.9	20	21.6	19.3	16.8	15.6	15.1	15.9	16.4	17.1	17.7	18.1	18	17.2
4	4 GF	Day		3.6	14.2	19.5	21.2	19.1	16.4	15	14.2	14.8	15.2	16	16.1	17	18.4	18.5
4	4 GF	Evening		3.6	14.2	19.5	21.2	19.1	16.4	15	14.2	14.8	15.2	16	16.1	17	18.4	18.5
4	4 GF	Night		3.6	14.2	19.5	21.2	19.1	16.4	15	14.2	14.8	15.2	16	16.1	17	18.4	18.5
4	4 GF	Lden		10.6	21.3	26.5	28.2	26.1	23.4	22	21.2	21.8	22.2	23	23.2	24	25.4	25.5
5	5 GF	Day		0.7	11.7	17.3	19.4	17.8	15.8	14.9	14.6	15.6	16.3	17.3	18	18.5	18.2	17.4
5	5 GF	Evening		0.7	11.7	17.3	19.4	17.8	15.8	14.9	14.6	15.6	16.3	17.3	18	18.5	18.2	17.4
5	5 GF	Night		0.7	11.7	17.3	19.4	17.8	15.8	14.9	14.6	15.6	16.3	17.3	18	18.5	18.2	17.4
5	5 GF	Lden		7.7	18.7	24.3	26.4	24.8	22.8	21.9	21.6	22.6	23.3	24.3	25	25.5	25.2	24.4
6	6 GF	Day		-4.6	6.3	11.8	13.9	12.3	10.2	9.2	8.6	7.3	6	6.9	10.3	12	12	11.1
6	6 GF	Evening		-4.6	6.3	11.8	13.9	12.3	10.2	9.2	8.6	7.3	6	6.9	10.3	12	12	11.1
6	6 GF	Night		-4.6	6.3	11.8	13.9	12.3	10.2	9.2	8.6	7.3	6	6.9	10.3	12	12	11.1
6	6 GF	Lden		2.4	13.3	18.8	21	19.3	17.2	16.2	15.6	14.3	13	13.9	17.3	19	19	18.1
7	7 GF	Day		-9.1	1.9	7.5	9.6	8	5.9	5	2.6	0.1	-1.7	0.3	4.5	8.1	7.7	6.7
7	7 GF	Evening		-9.1	1.9	7.5	9.6	8	5.9	5	2.6	0.1	-1.7	0.3	4.5	8.1	7.7	6.7
7	7 GF	Night		-9.1	1.9	7.5	9.6	8	5.9	5	2.6	0.1	-1.7	0.3	4.5	8.1	7.7	6.7
7	7 GF	Lden		-2.1	8.9	14.5	16.6	15	13	12	9.6	7.1	5.3	7.3	11.5	15.1	14.7	13.7
8	8 GF	Day		-12.4	-1.6	3.8	5.9	4.2	1.8	0.8	0.4	1.1	1.7	0.9	-1.2	-1.8	-2.6	-2.3
8	8 GF	Evening		-12.4	-1.6	3.8	5.9	4.2	1.8	0.8	0.4	1.1	1.7	0.9	-1.2	-1.8	-2.6	-2.3
8	8 GF	Night		-12.4	-1.6	3.8	5.9	4.2	1.8	0.8	0.4	1.1	1.7	0.9	-1.2	-1.8	-2.6	-2.3
8	8 GF	Lden		-5.4	5.4	10.8	12.9	11.2	8.8	7.8	7.4	8.1	8.8	8	5.8	5.2	4.4	4.8
9	9 GF	Day		-2.7	8.1	13.5	15.3	13	10.3	9	8.4	8.9	9.3	9.9	10.2	10.8	10.4	9.3

9	9 GF	Evening	-2.7	8.1	13.5	15.3	13	10.3	9	8.4	8.9	9.3	9.9	10.2	10.8	10.4	9.3
9	9 GF	Night	-2.7	8.1	13.5	15.3	13	10.3	9	8.4	8.9	9.3	9.9	10.2	10.8	10.4	9.3
9	9 GF	Lden	4.3	15.1	20.6	22.3	20	17.3	16	15.4	15.9	16.3	16.9	17.2	17.9	17.4	16.3
10	10 GF	Day	13.6	25.4	31.8	34.8	34.1	33	33	33.7	35.7	37.3	39.3	41	42.5	43.1	43.5
10	10 GF	Evening	13.6	25.4	31.8	34.8	34.1	33	33	33.7	35.7	37.3	39.3	41	42.5	43.1	43.5
10	10 GF	Night	13.6	25.4	31.8	34.8	34.1	33	33	33.7	35.7	37.3	39.3	41	42.5	43.1	43.5
10	10 GF	Lden	20.6	32.4	38.8	41.8	41.2	40	40	40.7	42.7	44.3	46.3	48	49.5	50.1	50.6
11	11 GF	Day	8.7	20.7	27	30	29.3	27.6	27.6	28.3	29.7	31.3	31.1	30.8	30.4	29.8	30.5
11	11 GF	Evening	8.7	20.7	27	30	29.3	27.6	27.6	28.3	29.7	31.3	31.1	30.8	30.4	29.8	30.5
11	11 GF	Night	8.7	20.7	27	30	29.3	27.6	27.6	28.3	29.7	31.3	31.1	30.8	30.4	29.8	30.5
11	11 GF	Lden	15.7	27.7	34.1	37.1	36.4	34.7	34.6	35.3	36.7	38.3	38.1	37.8	37.4	36.9	37.5
12	12 GF	Day	-12.9	-2.1	3.3	5.4	3.7	1.5	0.6	0.2	1.1	1.7	2.6	3.5	4.5	4.3	3.2
12	12 GF	Evening	-12.9	-2.1	3.3	5.4	3.7	1.5	0.6	0.2	1.1	1.7	2.6	3.5	4.5	4.3	3.2
12	12 GF	Night	-12.9	-2.1	3.3	5.4	3.7	1.5	0.6	0.2	1.1	1.7	2.6	3.5	4.5	4.3	3.2
12	12 GF	Lden	-5.9	4.9	10.3	12.4	10.7	8.6	7.6	7.2	8.1	8.7	9.6	10.5	11.6	11.3	10.2
13	13 GF	Day	-7.7	3.2	8.8	10.8	9	6.6	5.4	4.4	1.3	-2.8	-5.4	-3.9	-0.3	3	3.5
13	13 GF	Evening	-7.7	3.2	8.8	10.8	9	6.6	5.4	4.4	1.3	-2.8	-5.4	-3.9	-0.3	3	3.5
13	13 GF	Night	-7.7	3.2	8.8	10.8	9	6.6	5.4	4.4	1.3	-2.8	-5.4	-3.9	-0.3	3	3.5
13	13 GF	Lden	-0.7	10.2	15.8	17.8	16	13.6	12.4	11.4	8.3	4.2	1.6	3.1	6.7	10	10.6
14	14 GF	Day	1.4	12.3	17.6	19.4	17.6	15.5	14.6	14.3	15.2	15.9	16.8	17.5	18	17.6	16.8
14	14 GF	Evening	1.4	12.3	17.6	19.4	17.6	15.5	14.6	14.3	15.2	15.9	16.8	17.5	18	17.6	16.8
14	14 GF	Night	1.4	12.3	17.6	19.4	17.6	15.5	14.6	14.3	15.2	15.9	16.8	17.5	18	17.6	16.8
14	14 GF	Lden	8.4	19.3	24.6	26.4	24.6	22.5	21.6	21.3	22.2	22.9	23.8	24.5	25	24.7	23.8

1 kHz	1 kHz	2 kHz	2 kHz	2 kHz	3 kHz	4 kHz	5 kHz	6 kHz	8 kHz	10 kHz	12 kHz	16 kHz	20 kHz
50	48.8	46.6	44.3	41.6	38.6	35.5	32	27.5	21.7	13.2	0.6	-19.7	-39.3
50	48.8	46.6	44.3	41.6	38.6	35.5	32	27.5	21.7	13.2	0.6	-19.7	-39.3
50	48.8	46.6	44.3	41.6	38.6	35.5	32	27.5	21.7	13.2	0.6	-19.7	-39.3
57	55.8	53.6	51.3	48.6	45.6	42.5	39	34.5	28.7	20.3	7.6	-12.7	-32.3
10.2	8.2	6.3	4.2	0.9	-3.7	-10	-19	-32.5	-51.9	-80.5	0	0	0
10.2	8.2	6.3	4.2	0.9	-3.7	-10	-19	-32.5	-51.9	-80.5	0	0	0
10.2	8.2	6.3	4.2	0.9	-3.7	-10	-19	-32.5	-51.9	-80.5	0	0	0
17.2	15.2	13.3	11.3	7.9	3.3	-2.9	-12	-25.5	-44.9	-73.5	-114.6	0	0
8.5	6.5	5.1	4.5	1.2	-3.4	-9.6	-18.5	-31.8	-50.9	-79.1	-119.6	0	0
8.5	6.5	5.1	4.5	1.2	-3.4	-9.6	-18.5	-31.8	-50.9	-79.1	-119.6	0	0
8.5	6.5	5.1	4.5	1.2	-3.4	-9.6	-18.5	-31.8	-50.9	-79.1	-119.6	0	0
15.5	13.5	12.1	11.5	8.2	3.6	-2.6	-11.5	-24.8	-43.9	-72.1	-112.6	0	0
17.9	16.8	14.9	13	10.8	7.8	4.1	-0.8	-8.4	-18.4	-33.3	-55.6	-88.3	0
17.9	16.8	14.9	13	10.8	7.8	4.1	-0.8	-8.4	-18.4	-33.3	-55.6	-88.3	0
17.9	16.8	14.9	13	10.8	7.8	4.1	-0.8	-8.4	-18.4	-33.3	-55.6	-88.3	0
24.9	23.8	21.9	20.1	17.8	14.8	11.1	6.2	-1.4	-11.4	-26.3	-48.5	-81.3	-116.7
15.8	13.5	10.9	8.4	5.4	1.4	-3.8	-11.1	-21.8	-37	-59.4	-91.7	0	0
15.8	13.5	10.9	8.4	5.4	1.4	-3.8	-11.1	-21.8	-37	-59.4	-91.7	0	0
15.8	13.5	10.9	8.4	5.4	1.4	-3.8	-11.1	-21.8	-37	-59.4	-91.7	0	0
22.8	20.5	17.9	15.4	12.4	8.4	3.2	-4.1	-14.8	-30	-52.3	-84.7	0	0
9.3	7.1	4.7	1.9	-1.7	-6.8	-13.6	-23.5	-38.3	-59.5	-90.7	0	0	0
9.3	7.1	4.7	1.9	-1.7	-6.8	-13.6	-23.5	-38.3	-59.5	-90.7	0	0	0
9.3	7.1	4.7	1.9	-1.7	-6.8	-13.6	-23.5	-38.3	-59.5	-90.7	0	0	0
16.3	14.1	11.7	8.9	5.3	0.2	-6.6	-16.5	-31.3	-52.5	-83.7	0	0	0
4.7	2.4	-0.2	-3.5	-8	-14.4	-23.6	-37.1	-57.3	-86.9	0	0	0	0
4.7	2.4	-0.2	-3.5	-8	-14.4	-23.6	-37.1	-57.3	-86.9	0	0	0	0
4.7	2.4	-0.2	-3.5	-8	-14.4	-23.6	-37.1	-57.3	-86.9	0	0	0	0
11.8	9.4	6.8	3.5	-1	-7.4	-16.6	-30.1	-50.3	-79.9	0	0	0	0
-0.8	0.2	-0.1	-3	-7	-12.9	-20.8	-32.3	-50.3	-75.3	-112.2	0	0	0
-0.8	0.2	-0.1	-3	-7	-12.9	-20.8	-32.3	-50.3	-75.3	-112.2	0	0	0
-0.8	0.2	-0.1	-3	-7	-12.9	-20.8	-32.3	-50.3	-75.3	-112.2	0	0	0
6.2	7.2	6.9	4	0	-5.9	-13.8	-25.3	-43.3	-68.3	-105.2	0	0	0
8	6.4	3.7	0.7	-3.4	-9.3	-17.4	-29.4	-47.6	-73.5	-111.4	0	0	0

8	6.4	3.7	0.7	-3.4	-9.3	-17.4	-29.4	-47.6	-73.5	-111.4	0	0	0
8	6.4	3.7	0.7	-3.4	-9.3	-17.4	-29.4	-47.6	-73.5	-111.4	0	0	0
15	13.4	10.7	7.7	3.6	-2.3	-10.4	-22.4	-40.6	-66.4	-104.4	0	0	0
42.9	41.7	40	38	35.5	32.3	28.1	22.3	13.9	2	-15.7	-41.5	-79.4	0
42.9	41.7	40	38	35.5	32.3	28.1	22.3	13.9	2	-15.7	-41.5	-79.4	0
42.9	41.7	40	38	35.5	32.3	28.1	22.3	13.9	2	-15.7	-41.5	-79.4	0
49.9	48.7	47	45	42.6	39.3	35.1	29.3	20.9	9	-8.7	-34.5	-72.4	-114.2
32.2	33.9	30.8	28.3	24.9	19.8	13.6	4.5	-10.4	-29.6	-58	-100.2	0	0
32.2	33.9	30.8	28.3	24.9	19.8	13.6	4.5	-10.4	-29.6	-58	-100.2	0	0
32.2	33.9	30.8	28.3	24.9	19.8	13.6	4.5	-10.4	-29.6	-58	-100.2	0	0
39.2	40.9	37.8	35.3	32	26.8	20.6	11.6	-3.4	-22.6	-51	-93.2	0	0
0.8	-2.4	-6.3	-10.4	-15.5	-22.3	-31.7	-45	-64.6	-92.7	0	0	0	0
0.8	-2.4	-6.3	-10.4	-15.5	-22.3	-31.7	-45	-64.6	-92.7	0	0	0	0
0.8	-2.4	-6.3	-10.4	-15.5	-22.3	-31.7	-45	-64.6	-92.7	0	0	0	0
7.8	4.6	0.8	-3.3	-8.4	-15.3	-24.7	-38	-57.6	-85.7	0	0	0	0
3	1.7	-1.6	-5.7	-11.3	-19.4	-30.6	-47.2	-72.4	-108.5	0	0	0	0
3	1.7	-1.6	-5.7	-11.3	-19.4	-30.6	-47.2	-72.4	-108.5	0	0	0	0
3	1.7	-1.6	-5.7	-11.3	-19.4	-30.6	-47.2	-72.4	-108.5	0	0	0	0
10	8.7	5.5	1.3	-4.3	-12.4	-23.6	-40.2	-65.4	-101.5	0	0	0	0
15	12.6	7.1	-0.6	-9.6	-19.9	-29.3	-39.9	-54.8	-75.9	-106.3	0	0	0
15	12.6	7.1	-0.6	-9.6	-19.9	-29.3	-39.9	-54.8	-75.9	-106.3	0	0	0
15	12.6	7.1	-0.6	-9.6	-19.9	-29.3	-39.9	-54.8	-75.9	-106.3	0	0	0
22	19.6	14.1	6.4	-2.6	-12.9	-22.3	-32.9	-47.8	-68.8	-99.3	0	0	0

APPENDIX C

PROPOSED SPEAKER SPECIFICATIONS



JBL Dual EON615 Powered Speaker Pro Kit with Stands, Covers, Bag, and Cables

Add to Cart



Search

DealZone Ends In 10:33:31

Hello, Log In My Account



Photography Computers Pro Video Lighting Pro Audio Mobile TVs & Entertainment Camcorders Surveillance Optics Audio-Visual Used Specials

Fast Delivery of Online / Phone Orders + Store Pickup - NYC Store Open

See Schedule Details

Free Expedited Shipping* to San Luis Obispo



Use the B&H payboo Card SAVE THE TAX

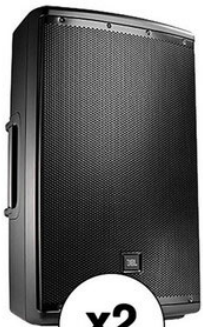
Learn More

Home > Pro Audio > Live Sound > PA Speakers > PA Speakers > JBL EON615

JBL Dual EON615 Powered Speaker Pro Kit with Stands, Covers, Bag, and Cables



BH #JBEON615K2 (B&H Kit) ★★★★★ 5 reviews | [5 Questions, 12 Answers](#)



KIT

More on the Way

Share Print

Request Stock Alert

Expected availability: 3-7 business days

\$849.95 Price \$1,249.95 Instant Savings \$400.00

Save the Tax with the payboo Card

1

Add to Cart

Add to Wish List

Free Expedited Shipping

Speaker Type | Driver Size

2-Way | 10"

2-Way | 12"

2-Way | 15"

Subwoofer | 18"

Configuration

Pair With Pro PA Kit

12 Month Promo Financing Available

On purchases of \$599 or more made with the B&H financing credit card. Learn More

Key Features

- Two JBL EON615 - 15" Powered Speakers
- Two Steel Speaker Stands
- Two Speaker Covers
- Speaker Stand Bag

[Show More](#)

This B&H Kit combines a pair of JBL EON615 Two-Way 15" 1000W Powered Portable PA Speakers with two speaker stands, two speaker covers, two premium mic cables, and a speaker stand bag to create a complete portable PA solution with protection from on-the- [More Details](#)



True Know-How Ask Our Experts

[Live Chat](#) | [800.606.6969](#) | [Request Callback](#) | [Email](#)

Chat



JBL Dual EON615 Powered Speaker Pro Kit with Stands, Covers, Bag, and Cables

Add to Cart



Repair Studio Line
4000 Series XLR M to
\$17.99

Add to Cart



Pro Professional
Bluetooth Total Kit
\$99.95
Save \$10.00

Add to Cart



Array 5x7-LED
Speaker and Lighting
\$29.99
Save \$10.00

Add to Cart



Pro Professional
Bluetooth Total XLR-
\$59.00

Add to Cart



dbx DriveRack 260
Equalization and
\$639.00

Add to Cart



ProX Universal Dual
ATA-Style Speaker
\$499.99

Add to Cart



Polarsen HDM-16-S
Handheld Dynamic
\$59.99

Add to Cart



Impact Filled Saddle
Sandbag (15 lb, Black)
\$21.95

Add to Cart

- OVERVIEW
- SPECS
- REVIEWS 5
- Q&A 5
- QUICK COMPARE
- ACCESSORIES

JBL EON615 Two-Way 15" 1000W Powered Portable PA Speaker With Bluetooth Control Specs

PA Speaker

Configuration	Active 2-Way
Enclosure Type	Bass-Reflex Loudspeaker
Total Power Capacity	1000 W Peak 500 W Program
Amplifier Power Rating	LF: 700 W Peak 350 W Program HF: 300 W Peak 150 W Program
Amplifier Class	Class-D

Drivers

HF Driver	1 x 1" / 25.4 mm Horn-Loaded Polymer Compression Driver
-----------	---

Chat



JBL Dual EON615 Powered Speaker Pro Kit with Stands, Covers, Bag, and Cables

[Add to Cart](#)

Magnet

HF:
Neodymium

Performance

Frequency Range 39 Hz to 20 kHz -10 dB

Frequency Response 50 Hz to 20 kHz \pm 3 dB

Maximum SPL 127 dB

Coverage Angle 90° H x 50° V

Max Input Level
Mic Input:
-4 dBu (Balanced)
Line Input:
+14 dBu (Balanced)

Gain Range
Line Input:
0 to 26.8 dBu
Mic Input:
0 to 29 dBu

I/O Impedance
Input:
20 Kilohms (Balanced)

Connectivity

Audio I/O
2 x Combo XLR-1/4" TRS Female
Balanced/Unbalanced Mic/Line Input
1 x XLR 3-Pin Male Balanced Line Thru

Wireless Connectivity Bluetooth

Signal Processing

Crossover 1.8 kHz

[Chat](#)



JBL Dual EON615 Powered Speaker Pro Kit with Stands, Covers, Bag, and Cables

[Add to Cart](#)

1 x HF SNET

Parametric EQ

Yes

Digital Signal Processing

Voicing Modes

Power

AC Input Power

Universal:
100 to 240 VAC, 50 / 60 Hz

AC Power Connector

1 x IEC

Current Consumption

120 VAC:
1.14 A (1/8 Power)
1.71 A (1/4 Power)
2.03 A (1/3 Power)

Physical

Mounting

1 x 1.38" / 35 mm Pole Socket (Bottom)
3 x M10 Fly Point

Handles

4

Construction Material

Perforated Metal Grille, Polypropylene

Dimensions

27.8 x 17.3 x 14.4" / 70.6 x 43.9 x 36.6 cm

Weight

39 lb / 17.7 kg

Packaging Info

Package Weight

46 lb

Box Dimensions (LxWxH)

30.75 x 18.5 x 16"

[Chat](#)



JBL Dual EON615 Powered Speaker Pro Kit with Stands, Covers, Bag, and Cables

[Add to Cart](#)

Auray 51" 1020 Lightweight Aluminum Speaker Stand Specs

Type	Speaker Stand
Load Capacity	100 lb / 45.4 kg
Mount Size	1-3/8" 1-1/2"
Height Adjustment Range	47 to 78" / 120 to 198 cm
Material of Construction	Aluminum
Weight	5 lb / 2.3 kg

Packaging Info

Package Weight	4.9 lb
Box Dimensions (LxWxH)	42 x 5.3 x 5"

Auray Speaker Stand Bag 51" Interior (Black) Specs

Physical

Material	Nylon
Type of Closure	Zipper
Exterior Dimensions (H x W x D)	52 x 5 x 10.5" / 132.1 x 12.7 x 26.7 cm
Carrying/Transport Options	Dual carry handles with padded touch-fastener wrap
Weight	1.2 lb / 0.5 kg

[Chat](#)



JBL Dual EON615 Powered Speaker Pro Kit with Stands, Covers, Bag, and Cables

[Add to Cart](#)

Package Weight	1.11 lb
----------------	---------

Box Dimensions (LxWxH)	17.4 x 12.25 x 1.7"
------------------------	---------------------

Kopul Premium Performance 3000 Series XLR Male To XLR Female Microphone Cable (20', Black) Specs

Connector 1	3-Pin XLR Male
-------------	----------------

Connector 2	3-Pin XLR Female
-------------	------------------

Cable Length	20' / 6.1 m
--------------	-------------

Shielding	95% Spiral
-----------	------------

Wire Gauge	24 AWG
------------	--------

Contact Plating	Silver
-----------------	--------

Packaging Info

Package Weight	0.765 lb
----------------	----------

Box Dimensions (LxWxH)	11.6 x 11.2 x 1.15"
------------------------	---------------------

JBL BAGS EON615-CVR 5 Mm Padding/Water Resistant/ Cover For EON615 (Black) Specs

Physical

Type	Cover
------	-------

[Chat](#)



JBL Dual EON615 Powered Speaker Pro Kit with Stands, Covers, Bag, and Cables

Add to Cart

Package Weight 1.8 lb

Box Dimensions (LxWxH) 18.1 x 15.2 x 3.6"

See any errors on this page? [Let us know](#)

Customers Also Viewed



JBL EON618S Powered Subwoofer Kit with Cover, Pole and

★★★★★ (1 reviews)

B&H# JBEON618SSK

You Pay: **\$739.95**
Instant Savings!



JBL Dual EON610 Powered Speaker Kit with Stands, Covers,

B&H# JBEON610Q

You Pay: **\$699.95**
Instant Savings!



JBL EON615 Two-Way 15" 1000W Powered Portable PA Speaker

★★★★★ (21 reviews)

B&H# JBEON615
MFR# EON615

You Pay: **\$399.00**
Instant Savings!



JBL EON610 Two-Way 10" 1000W Powered Portable PA Speaker

★★★★★ (11 reviews)

B&H# JBEON610
MFR# EON610

You Pay: **\$299.00**
Instant Savings!



QSC CP12 Compact Powered Loudspeakers with Bag Kit

★★★★★ (3 reviews)

B&H# QSCP12NABK

You Pay: **\$499.00**
Instant Savings!

YOUR RECENTLY VIEWED ITEMS

Browsing History

ON

Clear History

11 seconds ago



JBL Dual EON615 Powered Speaker Pro Kit with Stands, Covers,

SALES & EXPERT ADVICE

800.606.6969
or 212.444.6615

CONTACT US

LIVE CHAT

CUSTOMER SERVICE

800.221.5743
or 212.239.7765

SHIPPING

RETURNS

GIFT CARDS

EVENT SPACE

LANGUAGE

CURRENCY

Chat



JBL Dual EON615 Powered Speaker Pro Kit with Stands, Covers, Bag, and Cables

Add to Cart

MORE HELPFUL LINKS +

SIGN UP FOR B&H NEWS AND SPECIAL OFFERS

email address

SIGN UP

Deal Zone Alerts

Weekly B&H Newsletter

Manage Existing Subscriptions

See sample Newsletter

OTHER B&H SITES

Student Advantage

B2B Corp. Govt. & Edu.

Federal Marketplace

GREAT CUSTOMER SERVICE

Newsweek
2020 -
America's
best
customer
service

America's Best
Customer Service
List
-Newsweek

GREAT EXPERIENCE

Newsweek
2020 -
America's
best
online
shops
award

America's Best Online
Shops
-Newsweek

Accessibility



B&H Mobile Site



Statement

© 2000-2020 B & H Foto & Electronics Corp. 420 9th Ave, New York, NY 10001

Privacy & Security User Agreement & Disclaimer Export Policy California Privacy Notice

We close every Friday evening to Saturday evening for Shabbos. Weekend hours

Prices, specifications, and images are subject to change without notice. Not responsible for typographical or illustrative errors. Manufacturer rebates, terms, conditions, and expiration dates are subject to manufacturers printed forms NYC DCA Lic.: Elec. Store #0906712 Elec. & Home App. Serv. Deal. #0907905; Sec. Hd. Deal. Gen. #0907906

