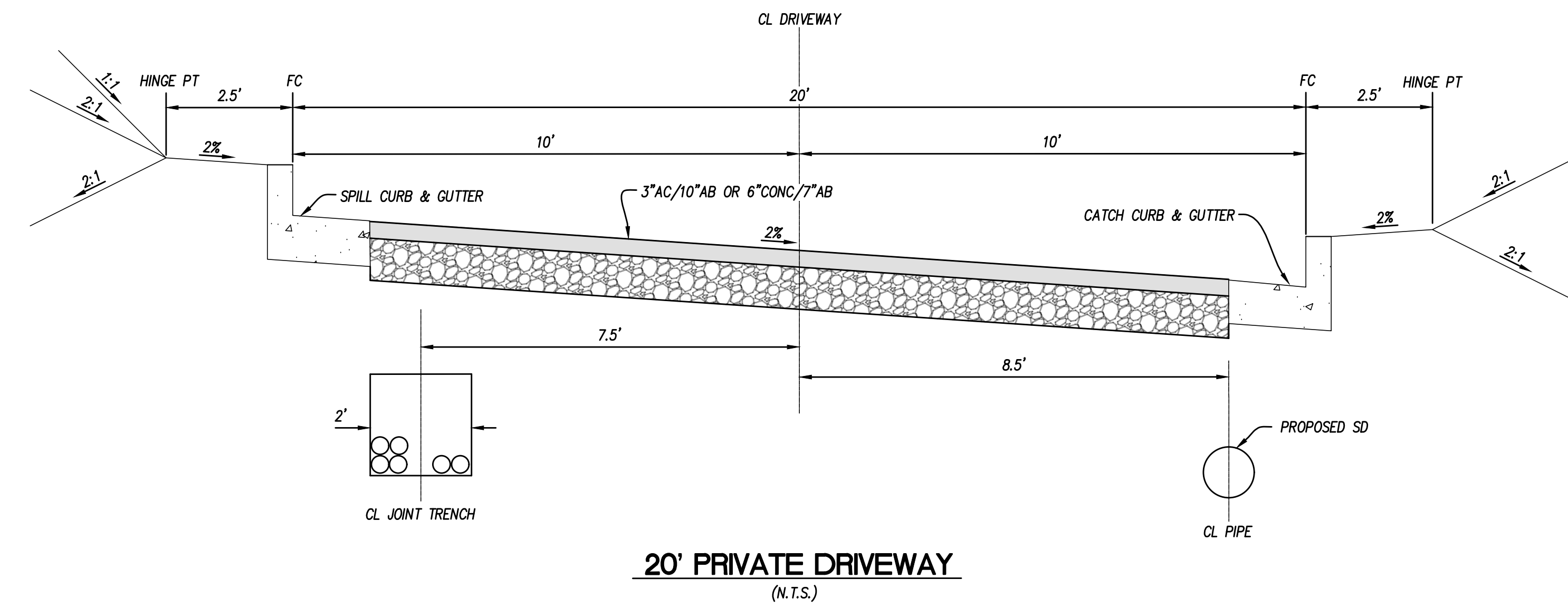
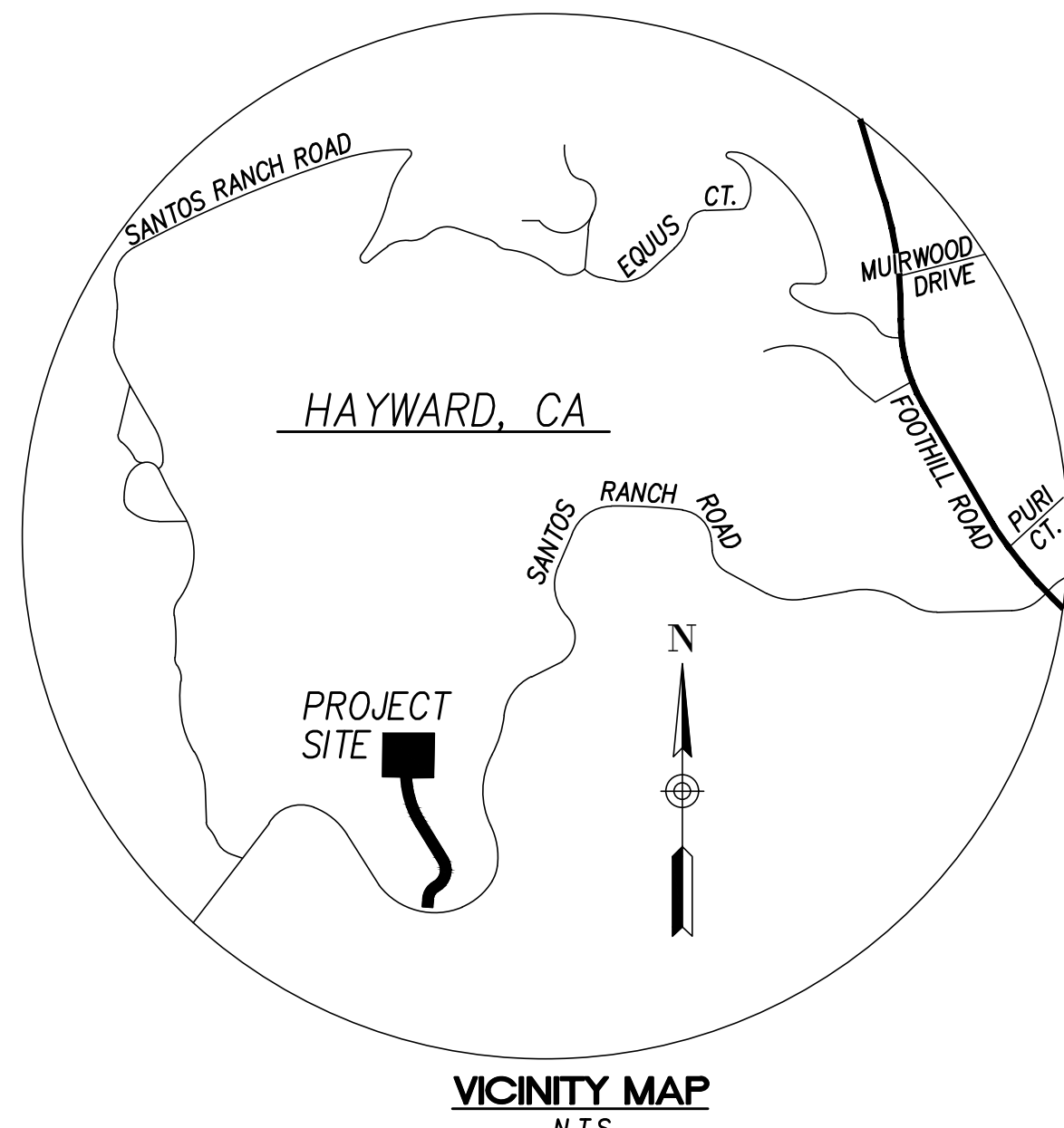
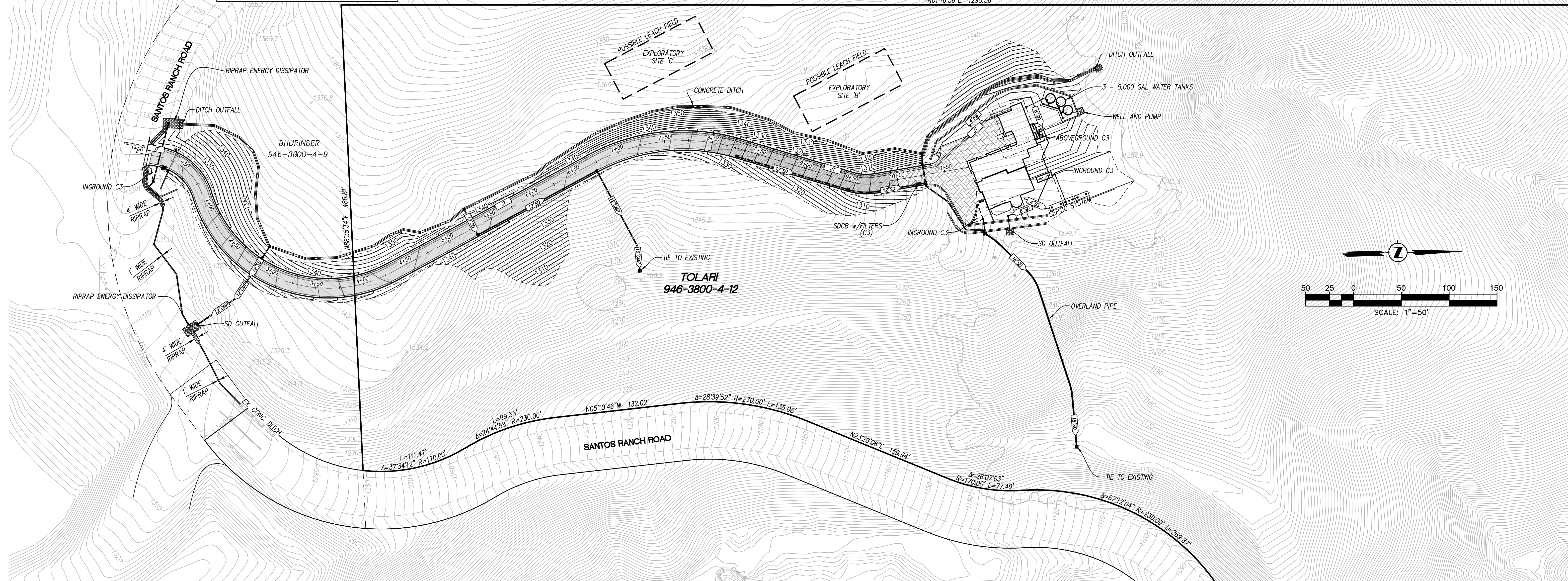


EAST BAY REGIONAL PARK DISTRICT
946-3800-4-10

APPENDIX A

EAST BAY REGIONAL PARK DISTRICT
946-3800-4-11



SHEET INDEX	
SHEET NUMBER	DESCRIPTION
1	VICINITY MAP, OVERALL UTILITY PLAN
2	HOMESITE UTILITY PLAN
3	SEPTIC SYSTEM DETAILS

REVIEW COPY
SUBJECT TO REVISION
NOT FINAL
THIS NOTICE TO BE REMOVED UPON
COMPLETION OF MAP AND UPON
AGENCY/CLIENT APPROVAL OF MAP



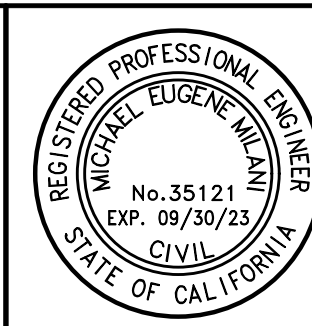
Storm Water Monitoring & Reporting
Land Development Engineering
Environmental Engineering
Municipal Engineering
Surveying & Mapping
Construction Staking

MILANI & Associates
2655 Stanwell Drive, Suite 105
Concord, CA 94520
Phone: (925) 674-9082
Fax: (925) 674-9279
Web: www.milaniassociates.com

APN: 946-3800-4-12

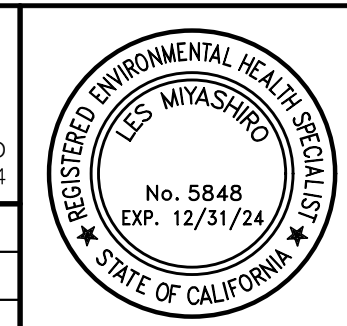
TOLARI PROPERTY
OVERALL UTILITY PLAN

CITY OF HAYWARD ALAMEDA COUNTY CALIFORNIA



DESIGNED UNDER THE DIRECTION OF:

MICHAEL E. MILANI R.C.E. No. 35121 REG. EXP. 9-30-23	DATE	LES MIYASHIRO R.E.H.S. No. 5848 REG. EXP. 12-31-24
DESIGN: MEM/SMS	JOB NO: 2303	
DRAWN: SMS	DATE: JANUARY 2023	
CHECKED: KRA	SCALE: AS SHOWN	



NO.	REVISIONS	BY	APP	DATE

SHEET
1
OF
3
SHEETS