

- ☒ County Clerk
- ☒ Interested Parties

**COUNTY OF LAKE
NOTICE OF INTENT
TO ADOPT A MITIGATED NEGATIVE DECLARATION**

Project Title: Joel Michaely; Use Permit (UP 22-15) and Initial Study (IS 22-14)

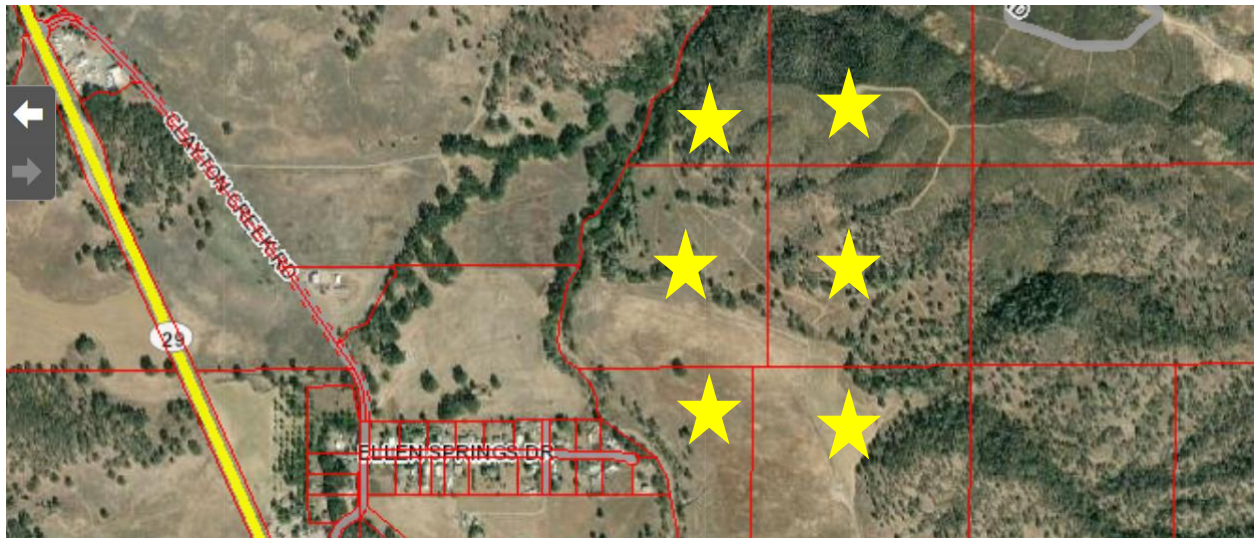
Project Location: 11450 and 11474 Spruce Grove Road, Lower Lake, CA

APNs No.: 012-045-39, 40, 41, 42, 43; 012-059-10, 11, 12, 13, 14

Project Description: Two-staged commercial cannabis cultivation project. Stage 1 is proposing A-Type 3 “Medium Outdoor” cannabis cultivation for a total canopy area of up to 1,089,000 sq. ft. (25 acres). Stage II is proposing Type 3B “Medium Mixed Light” cannabis cultivation for 550,000 sq. ft. (12.6 acres) of canopy area within 127 greenhouses that will house a cultivation area of 861,128 sq. ft. (19.8 acres). The outdoor cultivation area would entirely convert to greenhouse cultivation in Stage II.

The public review period for the respective proposed Mitigated Negative Declaration based on Initial Study IS 22-14 will begin on **April 26, 2023** and end on **May 25, 2023**. You are encouraged to submit written comments regarding the proposed Mitigated Negative Declaration. You may do so by submitting written comments to the Planning Division prior to the end of the review period. Copies of the application, environmental documents, and all reference documents associated with the project are available for review through the Community Development Department, Planning Division; telephone (707) 263-2221. Written comments may be submitted to the Planning Division or via email to eric.porter@lakecountyca.gov.

VICINITY MAP



PHASE II - CULTIVATION AREAS AT BUILDOUT

ABRIPTION:

LC IS PROPOSING TO PERMIT IN ACCORDANCE WITH THE FINANCE (ARTICLE 27), THE E 3B MIXED LIGHT 2000 SQUARE FEET (SF) OF TYPE 6 LICENSE FOR ACTURING, THE PROPOSAL DEVELOPMENT OF FACILITIES TIVATION, INCLUDING HOOP R DRYING AND CURING OF STORAGE SHEDS AND THE ON INFRASTRUCTURE.

ES:

3 NOTED, WRITTEN DIMENSIONS IDENCE OVER SCALED

NDARY SURVEY, BOUNDARY TED HAS BEEN OBTAINED Y 2015 GIS DATA, NORTHPOINT S, INC. HAS NOT VERIFIED THIS RY.

ARBY SCHOOLS, SCHOOL BUS ORSHIP, PUBLIC PARKS OR WITHIN 1,000 FEET OF THE TION AREA.

IDENCES ON ADJOINING 30 FEET OF THE PROPOSED S.

LOPMENT CONSTRUCTED FIT OF COUNTY REVIEW WILL IE LAKE COUNTY BUILDING APPROVAL OF THE USE

WATERCOURSES AS IDENTIFIED ASSESSMENT.

MMARY:
PROPOSING TO TRANSITION TO (POWER) POWER TO OPERATE CULTIVATION ACTIVITIES. UNTIL G&E, POWER TO EACH ED TO OPERATE THE LOW

