

INITIAL STUDY

APPENDIX F.2: PALEONTOLOGICAL RESOURCES RECORD SEARCH LETTER

Natural History Museum
of Los Angeles County
900 Exposition Boulevard
Los Angeles, CA 90007

tel 213.763.DINO
www.nhm.org

Research & Collections

e-mail: paleorecords@nhm.org

September 9, 2021

EcoTierra Consulting, Inc
Attn: Jenny Mailhot

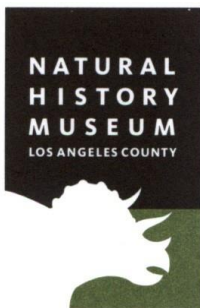
re: Paleontological resources for the Echelon Studios Project

Dear Jenny:

I have conducted a thorough search of our paleontology collection records for the locality and specimen data for proposed development at the Echelon Studios project area as outlined on the portion of Hollywood USGS topographic quadrangle map that you sent to me via e-mail on August 30, 2021. We do not have any fossil localities that lie directly within the proposed project area, but we do have fossil localities nearby from the same sedimentary deposits that occur in the proposed project area, either at the surface or at depth.

The following table shows the closest known localities in the collection of the Natural History Museum of Los Angeles County.

Locality Number	Location	Formation	Taxa	Depth
LACM VP 6947	Metrorail Red Line Vermont Ave. / Santa Monica Blvd. subway station.	Puente Formation (Weathered light gray thin bedded siltstone shale)	herring (<i>Ganolytes</i>), bristlemouth (<i>Cyclothone</i>), drum (<i>Sciaenidae</i>)	70 ft bgs
LACM VP 6948	Metrorail Red Line Vermont Ave. / Sunset Blvd. subway station	Puente Formation (Yellowish brown to gray bedded siltstone shale)	Croaker (<i>Genyonemus</i>), viperfish (<i>Chauliodus</i>), herring (<i>Ganolytes</i> , <i>Xyne</i>), porgies (<i>Plectrutes</i>), bonito (<i>Sarda</i>), drumfish (<i>Lompoquia</i>), perch-like (<i>Thyrsocles</i>), jack (<i>Decapterus</i>), rock bass (<i>Paralabrax</i>), argentine (<i>Argentina</i>), bristlemouth (<i>Cyclothone</i>)	80 ft bgs
LACM VP 6927-6300	Metro Rail Red Line Hollywood Blvd. subway tunnel, Hollywood Blvd from St. Andrews Place to Western Ave	Older alluvium (pebble-gravel; sand; sand & clay)	Horse (<i>Equus</i>), mastodon (<i>Mammot americanum</i>), bison (<i>Bison</i>), camel (<i>Camelops</i>)	47-80 feet bgs
LACM VP 5845	West side of Western Ave. just	Unknown formation (Pleistocene,	Mastodon (<i>Mammutidae</i>)	5-6 feet bgs



	north of Council St	unconsolidated yellow sediments)		
LACM VP 3250	Madison & Middlebury Streets	Unrecorded (Pleistocene)	Mammoth (<i>Mammuthus</i>)	8 ft bgs
LACM VP 6946; LACM IP 17137	Metrorail Red Line Vermont Ave. / Beverly Blvd. subway station entrance	Puente Formation (weathered yellowish brown thin bedded siltstone shale)	Herring (<i>Xyne</i>), smelt (<i>Bathylagus</i>), bristlemouth (<i>Cyclothone</i>), lanternfish (Myctophidae), mackerel/tuna/bonito family (Scombridae); Scallops (<i>Deltopecten</i>)	60 ft bgs

VP, Vertebrate Paleontology; IP, Invertebrate Paleontology; bgs, below ground surface

This records search covers only the records of the Natural History Museum of Los Angeles County (“NHMLA”). It is not intended as a paleontological assessment of the project area for the purposes of CEQA or NEPA. Potentially fossil-bearing units are present in the project area, either at the surface or in the subsurface. As such, NHMLA recommends that a full paleontological assessment of the project area be conducted by a paleontologist meeting Bureau of Land Management or Society of Vertebrate Paleontology standards.

Sincerely,



Alyssa Bell, Ph.D.
Natural History Museum of Los Angeles County

enclosure: invoice