







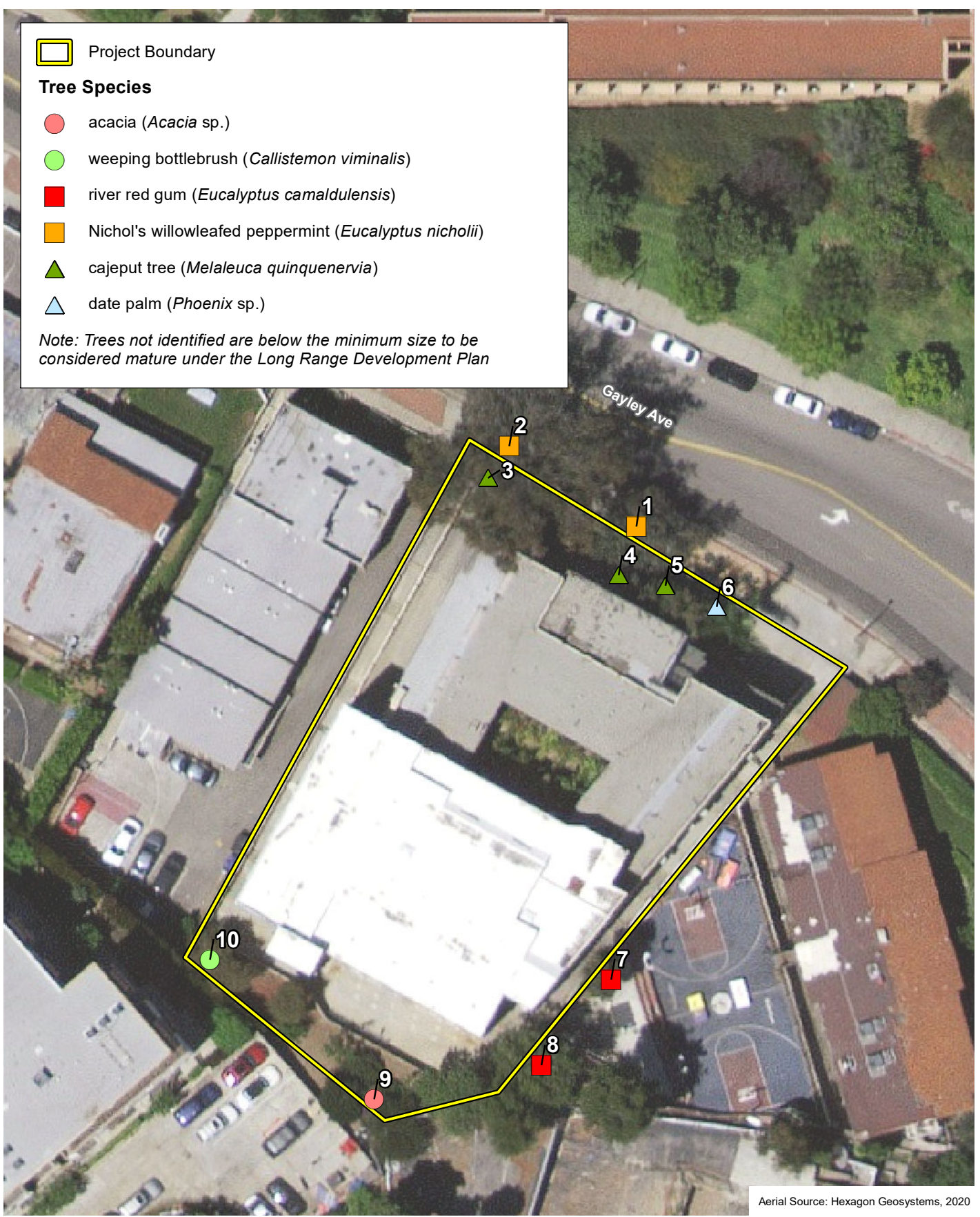
Appendix B
UCLA Gayley Towers Project
Tree Data
Psomas

 Project Boundary

Tree Species

-  acacia (*Acacia* sp.)
-  weeping bottlebrush (*Callistemon viminalis*)
-  river red gum (*Eucalyptus camaldulensis*)
-  Nichol's willowleafed peppermint (*Eucalyptus nicholii*)
-  cajeput tree (*Melaleuca quinquenervia*)
-  date palm (*Phoenix* sp.)

Note: Trees not identified are below the minimum size to be considered mature under the Long Range Development Plan

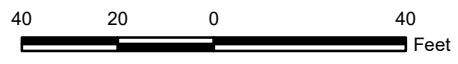
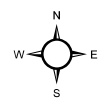


D:\Projects\3\TBP\010900\MXD\lex_Tree_20230420.mxd

Aerial Source: Hexagon Geosystems, 2020

Tree Locations

UCLA Gayley Towers Project



Gayley Towers Tree Data

Tree Tag #	Tree Species	# Main Trunks	D.B.H. (in)		Height (ft)	Canopy Diameter (ft)	Health Rating	Aesthetic Rating
			1st Trunk	2nd Trunk				
1	Nichol's willowleafed peppermint <i>Eucalyptus nicholii</i>	1	26.6		35	25	3	3
2	Nichol's willowleafed peppermint <i>Eucalyptus nicholii</i>	1	45.3		60	30	4	4
3	cajeput tree <i>Melaleuca quinquenervia</i>	2	9.6	6.4	20	5	4	4
4	cajeput tree <i>Melaleuca quinquenervia</i>	2	8.5	7.5	40	20	4	4
5	cajeput tree <i>Melaleuca quinquenervia</i>	1	14.6		40	25	4	4
6	date palm <i>Phoenix</i> sp.	1	12.0		30	15	4	4
7	river red gum <i>Eucalyptus camaldulensis</i>	1	18.0		30	15	4	3
8	river red gum <i>Eucalyptus camaldulensis</i>	1	25.0		35	30	4	4
9	acacia <i>Acacia</i> sp.	4	7.0	6.0	8	25	4	4
10	weeping bottlebrush <i>Callistemon viminalis</i>	1	12.0		25	25	4	4

Aesthetics/Health Rating: 1=Very Poor, 2=Poor, 3=Fair, 4=Good, and 5=Excellent