

APPENDIX I

Madison Flats Project Vehicle Miles Traveled Analysis Memorandum (LSA Project No. GBC2201) (VMT Analysis Memorandum) (LSA, February 2023)



February 20, 2023

Vital Patel
City Traffic Engineer
City of Riverside
3900 Main Street
Riverside, California 92501

Subject: Madison Flats Project Vehicle Miles Traveled Analysis Memorandum (LSA Project No. GBC2201)

Dear Vital:

LSA Associates, Inc. (LSA) is under contract to prepare a Vehicle Miles Traveled (VMT) Analysis memorandum (Memo) for the proposed Madison Flats Project (project) located south of the intersection of Winstrom Street and Railroad Avenue in the City of Riverside (City). Figure 1 (all figures attached) illustrates the regional and project location.

The project will include 76 dwelling units of senior residential development and 45 dwelling units of low-rise apartment development. All dwelling units for this project are categorized as affordable housing. Figure 2 illustrates the conceptual site plan for the project.

The objectives of this Memo are as follows:

- To determine whether a Vehicle Miles Traveled (VMT) analysis is required for the project; and
- To perform an active transportation and public transit analysis and determine if the project will generate any significant impact.

CEQA ASSESSMENT - VEHICLE MILES TRAVELED ANALYSIS

On December 28, 2018, the California Office of Administrative Law cleared the revised CEQA Guidelines for use. Among the changes to the guidelines was removal of vehicle delay and level of service as the sole basis of determining CEQA impacts. With the adopted guidelines, transportation impacts are to be evaluated based on a project's effect on VMT. The VMT analysis for the project was prepared based on the City's *Traffic Impact Analysis Guidelines for Vehicle Miles Traveled and Level of Service Assessment* (TIA Guidelines), dated July 2020.

Per the City's TIA Guidelines *Step 3: Project Type Screening* criteria, a project is eligible to be screened out from a VMT analysis if the project consists of 100% affordable housing. As previously mentioned in the project description, the project consists of 100% affordable housing for the senior housing units and multi-family low-rise apartments. Therefore, the project is anticipated to have a less than significant VMT impact and may be screened out from a VMT analysis.

CEQA ASSESSMENT - ACTIVE TRANSPORTATION AND PUBLIC TRANSIT ANALYSIS

According to the City's TIA Guidelines, a significant impact occurs when a project conflicts with adopted plans, policies, or programs regarding active transportation or public transit facilities, or otherwise decreases the performance or safety of such facilities.

Based on the City's *Bicycle Master Plan Update: Addendum*, adopted March 2012, at present, Class II bikeway have been added to both directions of Jefferson Street near the study area. Proposed future Class III bikeways will be added along the eastbound and westbound directions of Lincoln Avenue near the study area. The project is not anticipated to conflict with current and future construction of any of these facilities. As such, the project would not decrease the performance or safety of any existing or proposed bicycle facility.

Based on the City of Riverside *General Plan Circulation Element*, sidewalks are generally provided on both sides of any streets. Additionally, standard paved trails and non-standard unpaved trails are frequently used by bicyclists and pedestrians in the City. According to the City's General Plan, there is a proposed Regional Trail on Victoria Avenue at the intersection with Madison Street. Although there are no current trails within the study area, paved sidewalks are provided on both sides of Depot Street, Winstrom Street, Madison Street, Indiana Avenue, Casa Blanca Street, and Evans Street. Within the project vicinity, there are paved sidewalks along the northern side of Railroad Avenue. The proposed project will construct a paved sidewalk along the project frontage, which is the southern side of Railroad Avenue. Therefore, the project will provide pedestrian circulation along the project frontage on Railroad Avenue. As such, the project will not decrease the performance or safety of any existing or proposed pedestrian facility within the project vicinity while improving the pedestrian circulation along Railroad Avenue.

RTA local bus Route 14 currently operates within the study area. Route 14 has connections to the Galleria at Tyler, Downtown Riverside, Hunter Park Metrolink Station, and Loma Linda VA Hospital. Route 14 has stops on Winstrom Street/Indiana Avenue and Madison Street/Indiana Avenue. Crosswalks for Indiana Avenue are provided at each these bus stop locations for safe access to the westbound route. The project is not estimated to have any conflict with any of these existing or proposed transit services. As such, the project will not decrease the performance or safety of any existing or proposed public transit facility.

The project does not conflict with any existing or proposed bicycle, pedestrian, or public transit facility. Therefore, it can be considered to conform to all adopted policies, plans, or programs concerning these facilities and will not have a significant impact.

If you have any questions, please do not hesitate to contact me at (951) 781-9310 or Ambarish.Mukherjee@lsa.net.

Sincerely,

LSA



Ambarish Mukherjee, AICP, PE
Principal



ATTACHMENTS

- Figure 1: Regional and Project Location
- Figure 2: Conceptual Site Plan Part 1 of 3
- Figure 3: Conceptual Site Plan Part 2 of 3
- Figure 4: Conceptual Site Plan Part 3 of 3

FIGURES

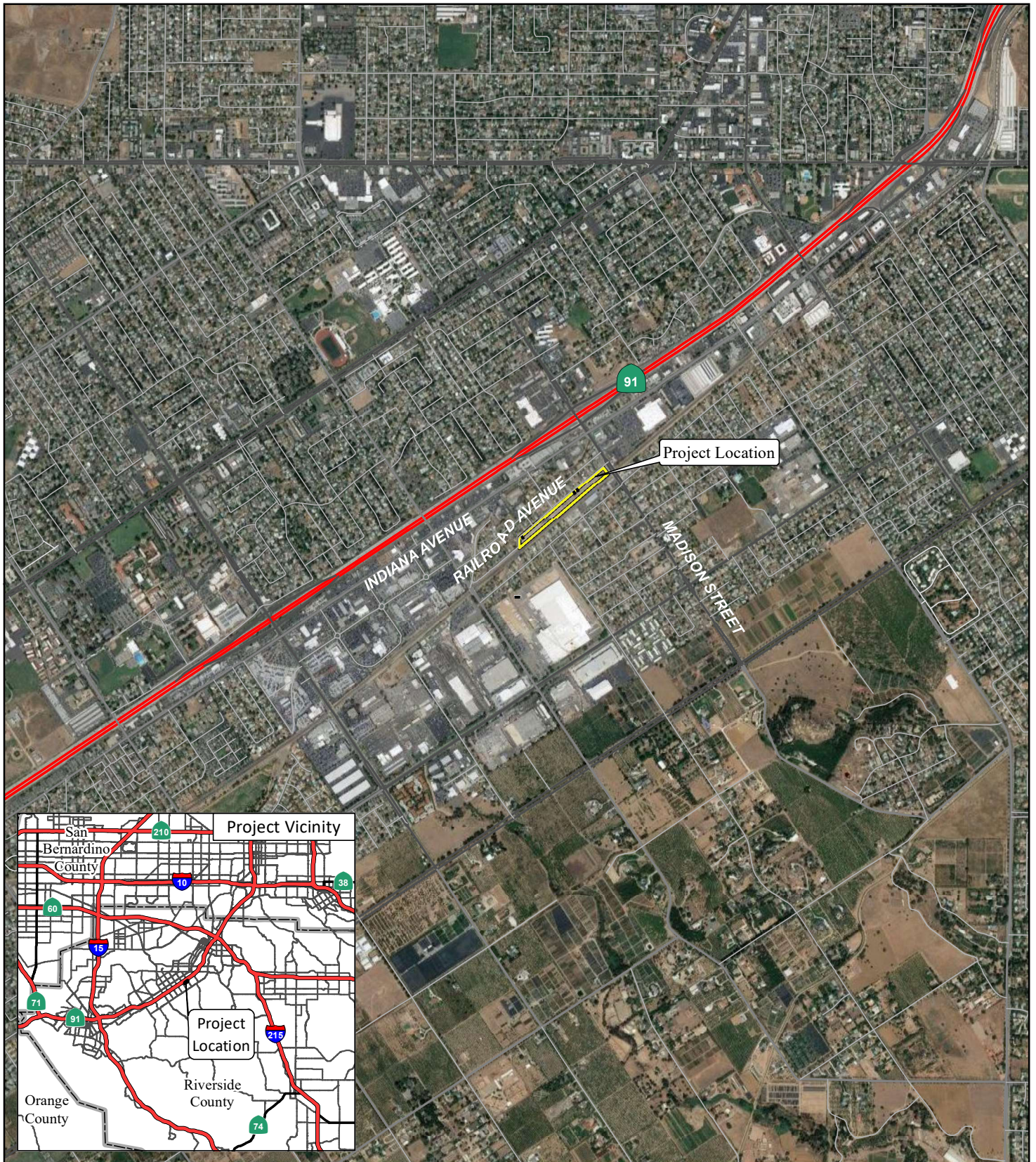
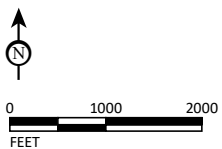


FIGURE 1

LSA

LEGEND

 Project Site



SOURCE: ESRI Streetmap, 2021; Google Earth, 2019

P:\GBC2201 Madison Flats\Technical Studies\Traffic\GIS\Reports\fig2-1_Reg_ProjLoc.mxd (1/10/2023)

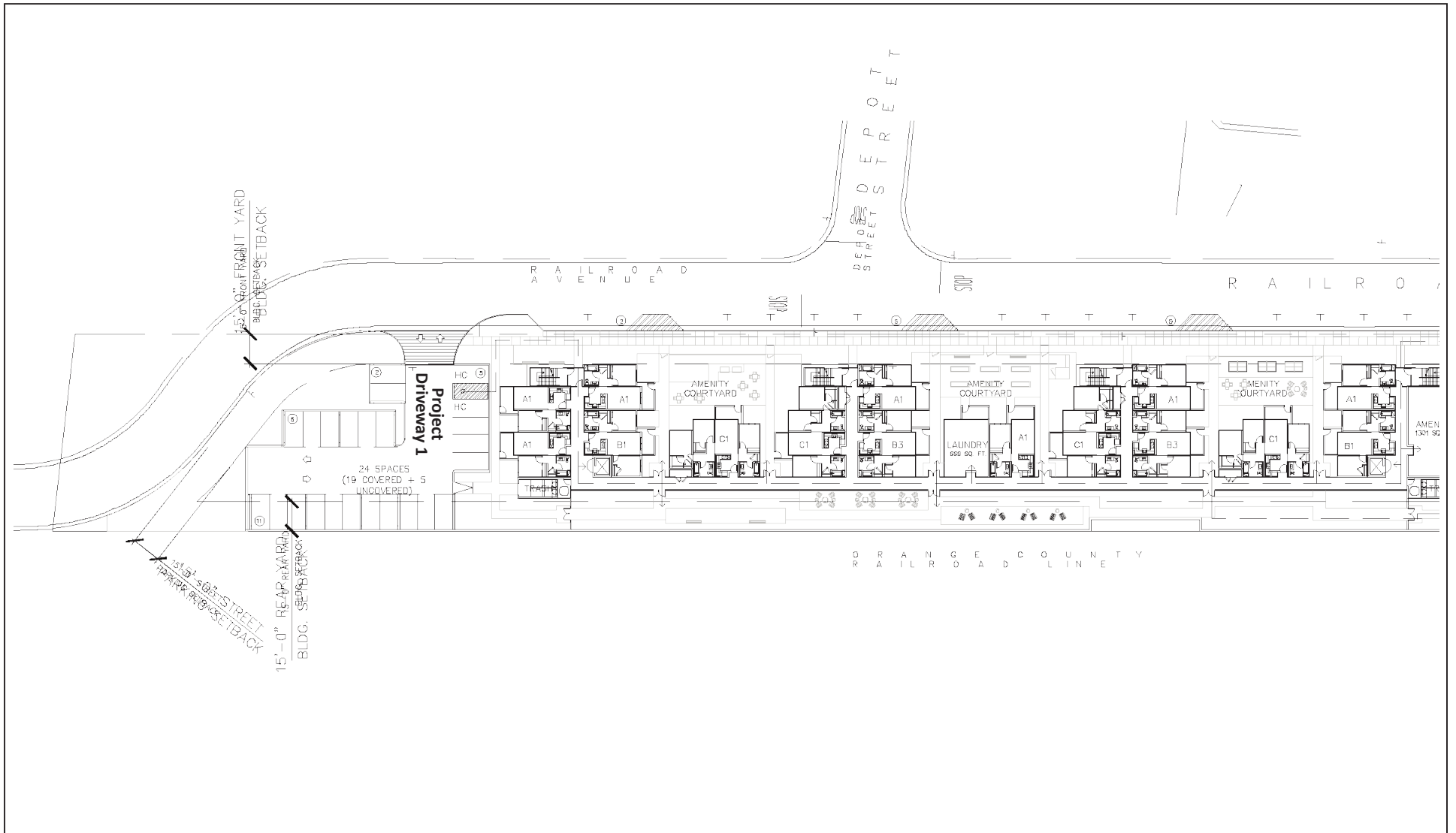
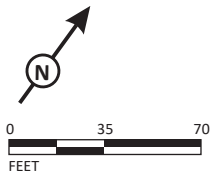


FIGURE 2



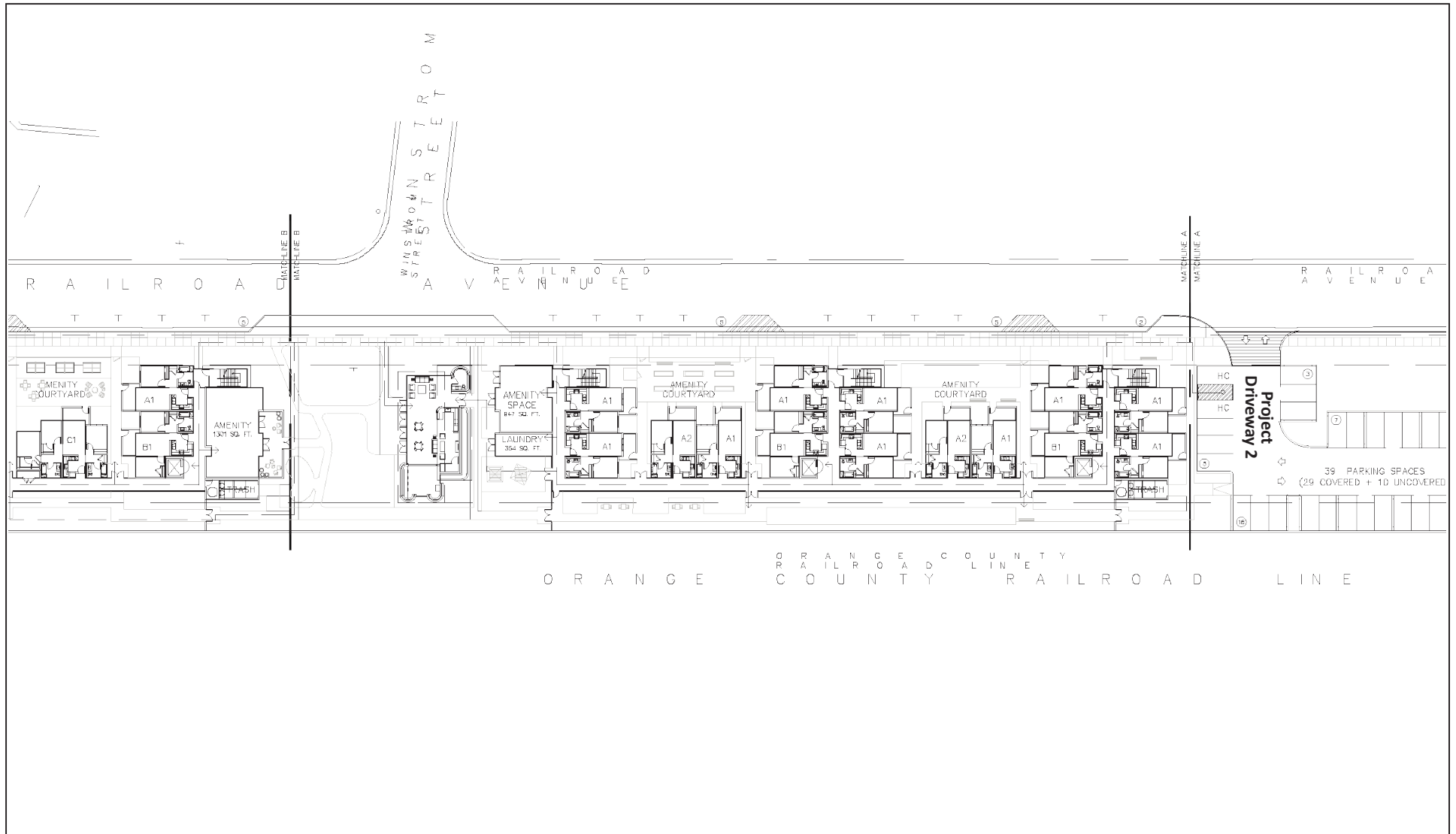
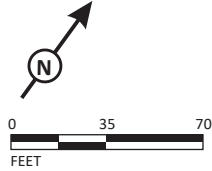


FIGURE 3



Madison Flats Project
Vehicle Miles Traveled Analysis Memorandum

Conceptual Site Plan Part 2 of 3

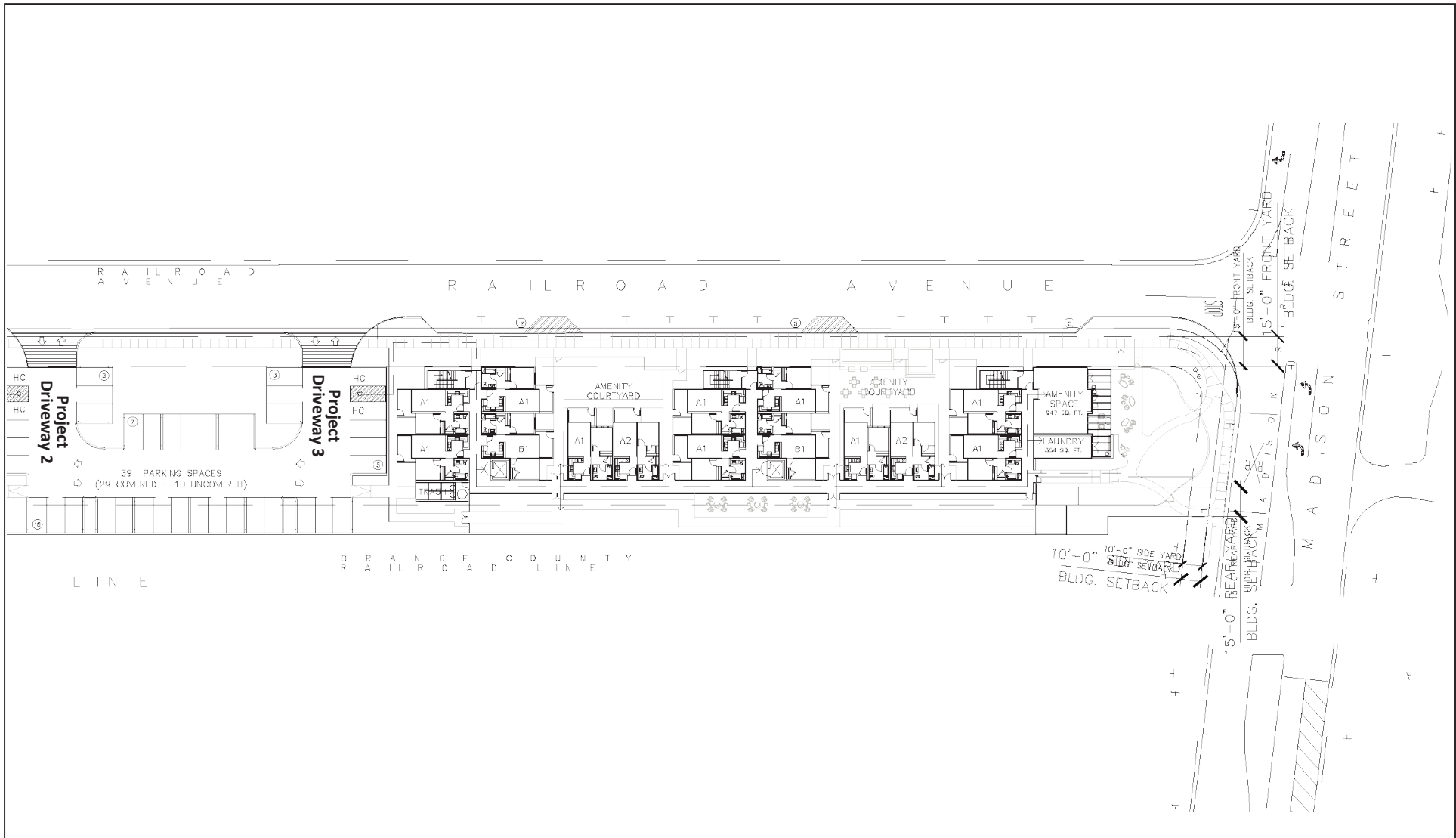


FIGURE 4

