

NOTICE OF EXEMPTION

To:
Office of Planning and Research
1400 10th Street, Room 121
Sacramento, CA 95814

From:
California Tahoe Conservancy
1061 Third Street
South Lake Tahoe, CA 96150

Project Title: Tahoe Basin Wildlife Connectivity Study

Project Location – Specific:

Multiple locations throughout the California side of the Tahoe Basin. (Exhibit A)

Project Location – City: Multiple throughout the California side of the Tahoe Basin

Project Location – County: El Dorado and Placer Counties

Description of Nature, Purpose, and Beneficiaries of Project:

The California Tahoe Conservancy approved a grant to the Wildlands Network to study wildlife movement throughout the Lake Tahoe Basin. Wildlands Network will develop models based on best available science and use field camera, roadkill, wildlife tracking, or other data collection methods to identify habitat linkages. The data and information that is gathered will be used to develop and inform a management strategy that will alleviate barriers to wildlife movement and protect functional habitat linkages.

Name of Public Agency Approving Project:

California Tahoe Conservancy

Name of Person or Agency Carrying Out Project: Wildlands Network

Exempt Status:

- Ministerial (§ 15268)
- Declared Emergency (§ 15269(a))
- Emergency Project (§ 15269(b)(c))
- Categorical Exemption –Classes 6, § 15306. (See also Cal. Code Regs., tit. 14, § 12102.6.)

Reasons Why Project is Exempt:

This project consists of basic data collection and resource evaluation activities that do not result in a serious or major disturbance to an environmental resource.

Contact Person: Joseph Harvey

Telephone Number: (530) 318-2335

Date Received for Filing:

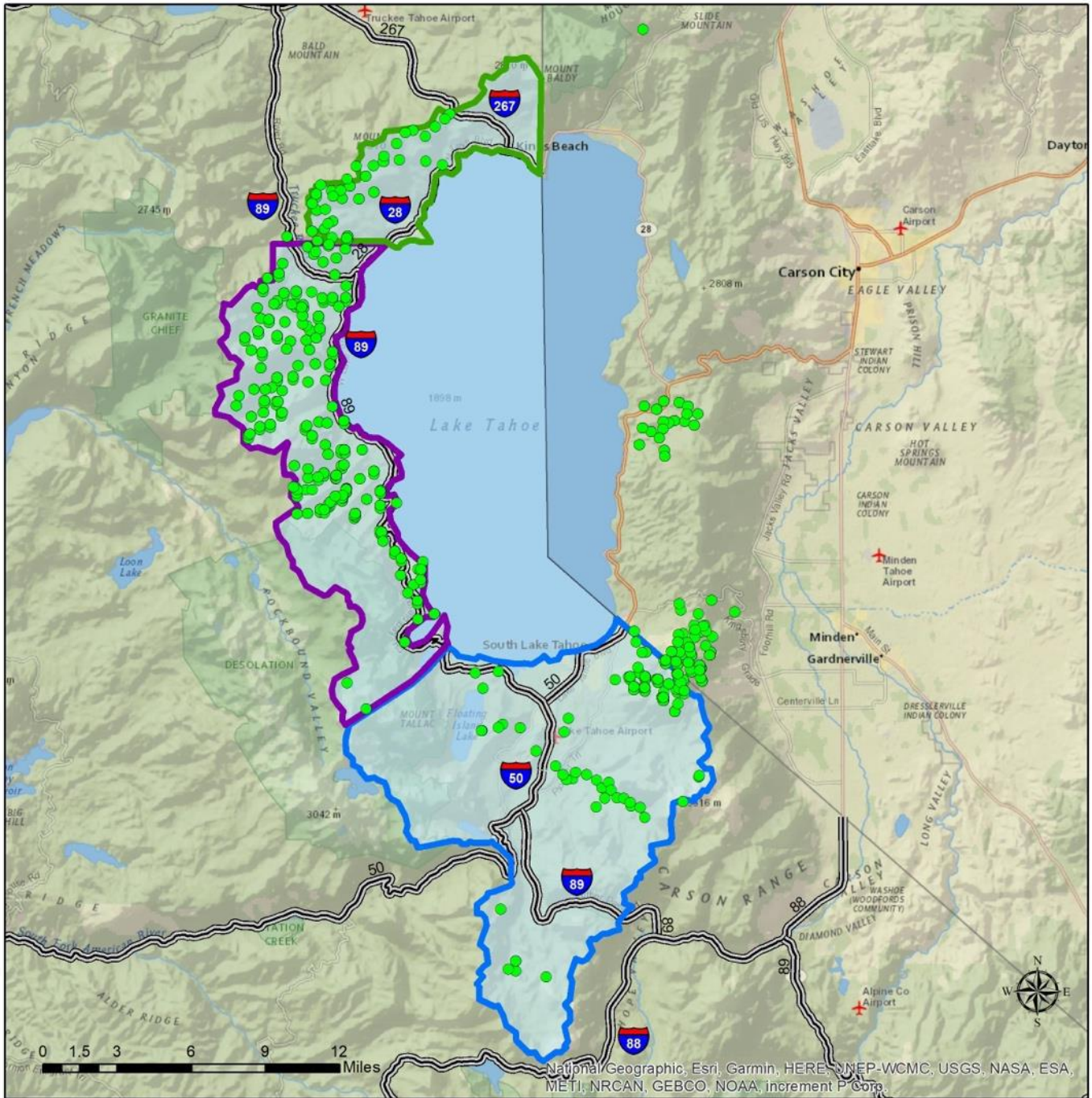
Jane Freeman

7/5/2023

Jane Freeman
Deputy Director

Exhibit A

Tahoe Basin Wildlife Connectivity Study Area with contributed Sierra marten data



Legend

- North Basin study area
- West Basin study area
- South Basin study area
- CA Tahoe Conservancy jurisdiction

CA Tahoe Conservancy & Forest Service Data

Marten Detections

- Present

Contributed Data:
CA Tahoe Conservancy
Forest Service
Map by:
Pathways for Wildlife