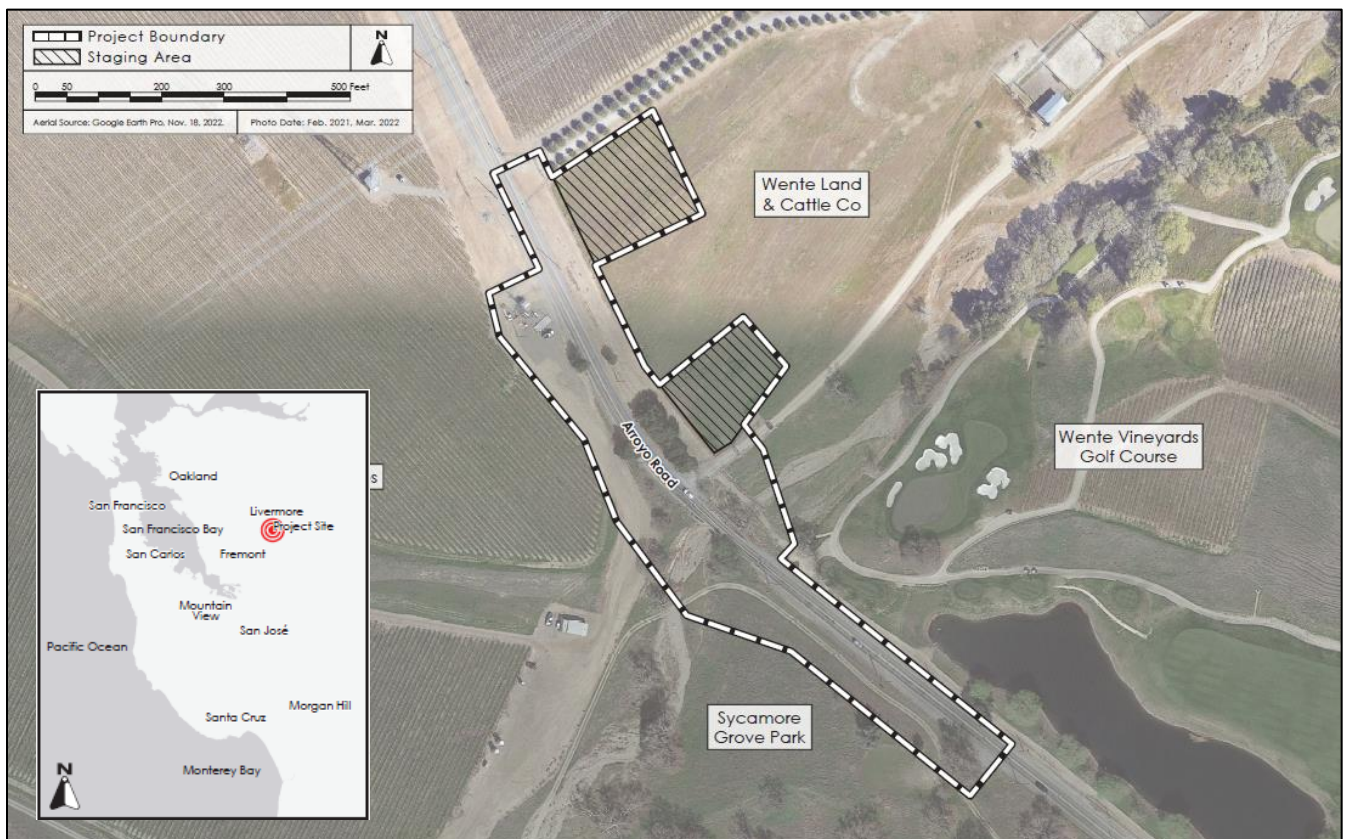




NOTICE OF INTENT TO ADOPT A MITIGATED NEGATIVE DECLARATION ARROYO ROAD AT DRY CREEK BRIDGE REPLACEMENT PROJECT

This notice is to inform the public and interested agencies that in accordance with the California Environmental Quality Act (CEQA), the Alameda County Public Works Agency (ACPWA) is circulating an Initial Study/Mitigated Negative Declaration (IS/MND) for public comment.

Project Location: The project is located on Arroyo Road, 0.6 miles south of Wetmore Road, in a rural area of Alameda County south of Livermore, California.



Project Description: The Proposed Project is to replace the structurally deficient Arroyo Road over Dry Creek Bridge (33C0448) with a new bridge that meets current applicable County, American Association of State Highway and Transportation Officials, and Caltrans design criteria and standards. The new bridge will be a cast-in-place, reinforced, concrete, single span, slab bridge that will accommodate two travel lanes plus shoulders and traffic rated vehicular barriers. The bridge will also accommodate a 12-foot-wide Class I bike path separated from traffic by an interior vehicular traffic rated barrier. The replacement structure will be 34-feet long and will be supported by integral diaphragm type abutments on deep foundations. The roadway profile will be raised approximately two feet to meet hydraulic and geometric requirements. To accommodate the raised profile, wider bridge structure, and longer span, the roadway centerline at the bridge will be shifted to the southwest to maintain traffic throughout construction while

balancing impacts from slopes encroaching upon agricultural land (winery) to the northwest, a park to the southwest, grazing land to the northeast, and a recreational facility to the southeast. The access driveway will be reconstructed to connect to the raised roadway.

Providing Comments & Review Period: ACPWA, as the lead agency, has prepared a Draft IS/MND for the project in compliance with the California Environmental Quality Act (CEQA), the CEQA Guidelines (California Code of Regulations §15000 et. seq.), and the regulations and policies of the County of Alameda, California. The Draft IS/MND is available for review at the ACPWA office located at 399 Elmhurst Street, Hayward, CA 94544, and the ACPWA website at www.acpwa.org/document-library.page (under ENVIRONMENTAL DOCUMENTS). **The 30-day public review period for the Draft Initial Study/Mitigated Negative Declaration is from August 7, 2023 to September 7, 2023.**

Any person who wishes to comment on the ACPWA's intent to adopt the Mitigated Negative Declaration (MND) must submit comments no later than **5:00 p.m. on September 7, 2023.** The Alameda County Board of Supervisors will consider the MND, all comments received, and responses to those comments prior to approval of the project. Comments may be sent by email to: amberl@acpwa.org and to steveh@acpwa.org. Written comments may also be sent to:

Amber Lo, Principal Civil Engineer
Alameda County Public Works Agency
399 Elmhurst Street
Hayward, CA 94544
amberl@acpwa.org

Steven Hunte
Alameda County Public Works Agency
399 Elmhurst Street
Hayward, CA 94544
steveh@acpwa.org