



Community and Economic Development Planning Division

Jamie Bax
Director

- 200 W. 4th Street
- Suite 3100
- Madera, CA 93637
- (559) 675-7821
- FAX (559) 675-6573
- TDD (559) 675-8970
- mc_planning@maderacounty.com

NOTICE OF INTENT TO ADOPT MITIGATED NEGATIVE DECLARATION 2023-20

This notice is to inform the public and interested agencies that in accordance with the California Environmental Quality Act (CEQA), the County of Madera is circulating Initial Study/Mitigated Negative Declaration (MND) 2023-20 for public comment.

Project/Location: The property is Located on the east side of Road 30 1/2, approximately 1/2 a mile southeast of its intersection with Avenue 12 (no situs), Madera.

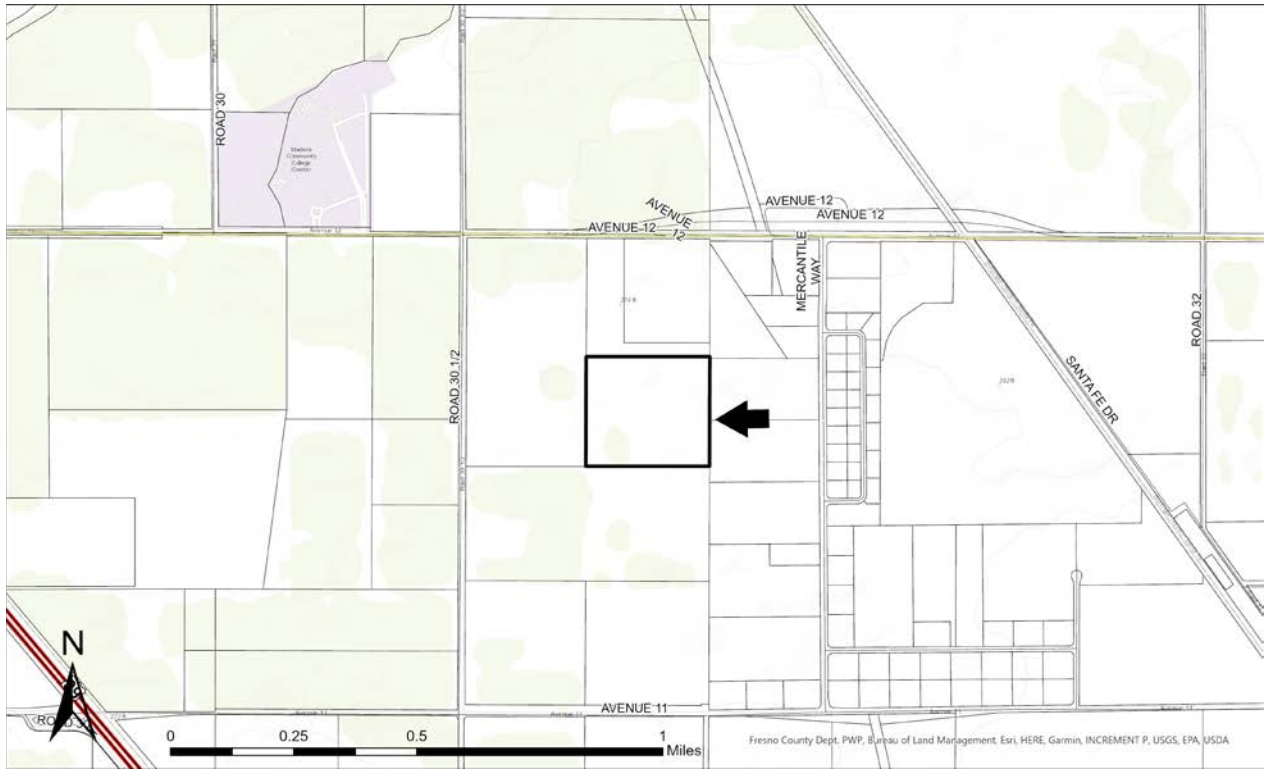
Project Description: The project is Request for a Conditional Use Permit (CUP #2022-016) to install a 200-megawatt Battery Energy Storage System (BESS), which will occupy approximately sixteen of the thirty-five acres. The BESS will initially comprise 2,400 storage containers with rows facing east to west and running north to south on the northside of the property. An additional 840 storage containers will be added throughout the project's life to maintain storage capacity. The project will also include a substation located on the northeast corner of the parcel. The parcel's project area will be enclosed with a seven-foot-high chain link fence.

Document Availability: The Initial Study/MND will be available for review at the following location beginning on Friday, August 4th, 2023:

- County of Madera Community & Economic Development Planning Division, 200 W 4th Street, Madera, CA 93637

Public Review Period: The 30-day public review period for the Initial Study/MND is from August 4 to September 4, 2023.

Comments: Any person who wishes to comment on the County's intent to adopt the MND must submit written comments no later than 5:00 p.m. on Monday September 4, 2023. Written comments may be sent to Jacob Aragon, Planner II, County of Madera Community & Economic Development Planning Division, 200 W 4th Street, Ste. 3100, Madera, CA 93637



Fresno County Dept. PWP, Bureau of Land Management. Eri, HERE, Garmin, INCREMENT P, USGS, EPA, USDA



Site Map