

WEST SANTA ANA BRANCH TRANSIT CORRIDOR PROJECT

Draft EIS/EIR Appendix S Final Hazardous Materials Impact Analysis Report Part 2 of 3

Prepared for:



Metro[®]

Los Angeles County

Metropolitan Transportation Authority

Prepared by:



WSP USA, Inc.

444 South Flower Street

Suite 800

Los Angeles, California 90071



June 2021

APPENDIX D HISTORICAL AERIAL PHOTOGRAPHS



GS VASK

I-17

2-28-68

2885
SERIAL NO. 101111
L.F.L.
101111



GS VASK

1-39

2-28-63



AL. F. L.

011mm

SER NO.

1-39

2-28-63

2-28-63

2-28-63

2-28-63

2-28-63

2-28-63

2-28-63

2-28-63

2-28-63

2-28-63

2-28-63

2-28-63

2-28-63

2-28-63

2-28-63

2-28-63

2-28-63

2-28-63

2-28-63

2-28-63

2-28-63

2-28-63

2-28-63

2-28-63

2-28-63

2-28-63

2-28-63

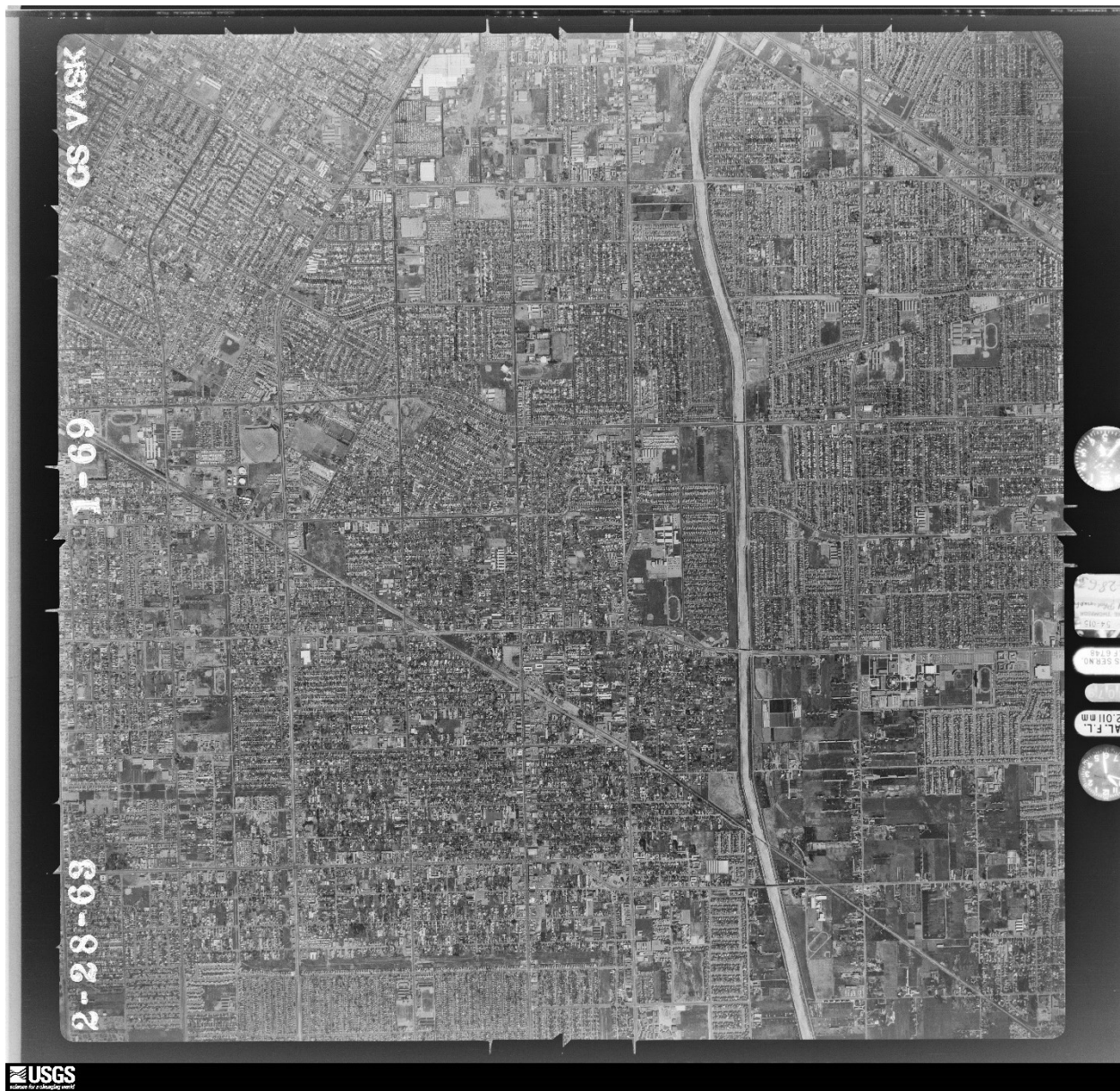
2-28-63

2-28-63

2-28-63

2-28-63

2-28-63



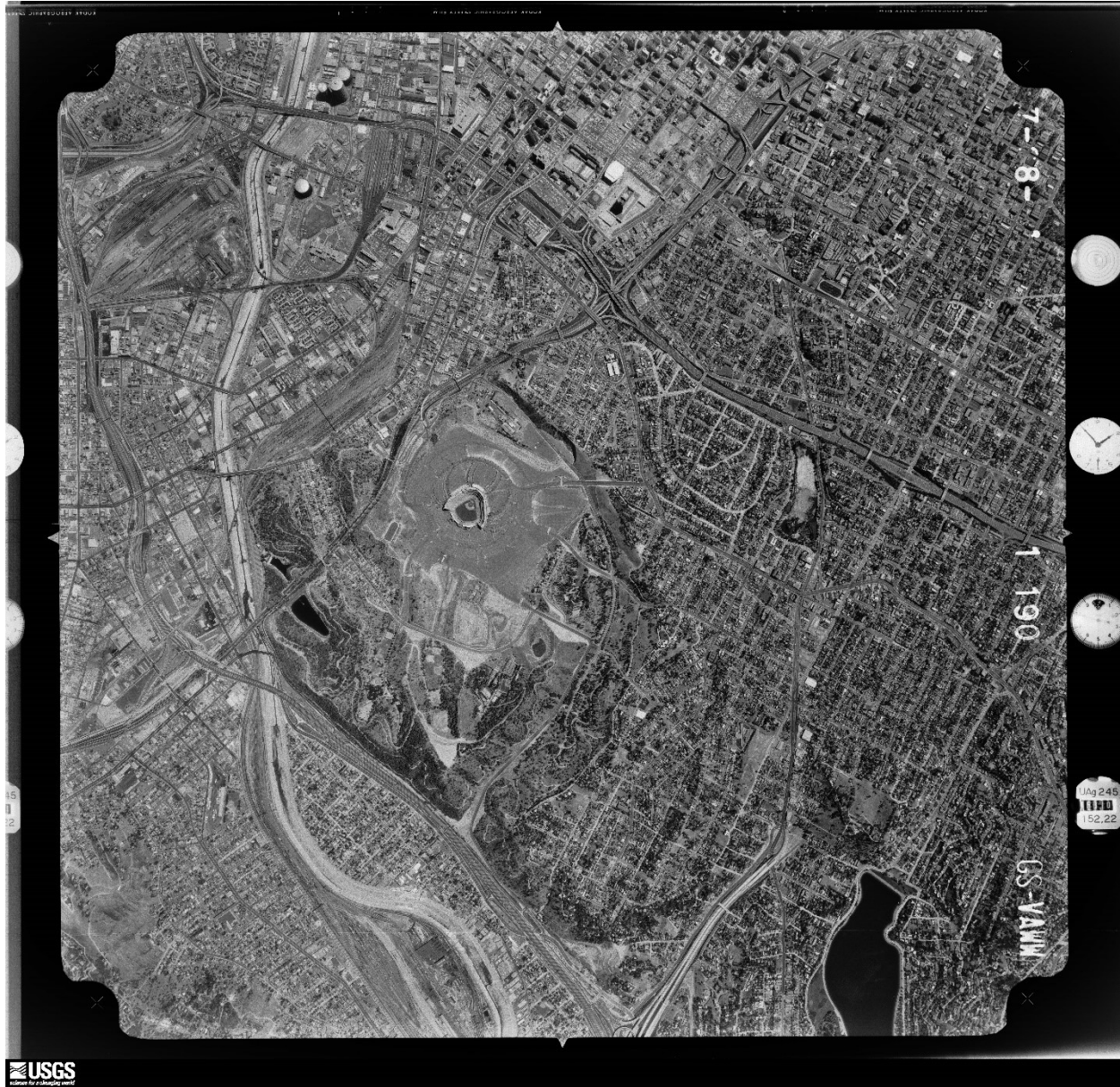
CS VASK

1-69

2-28-69

AL.F.L.
2.011mm
STATE NO.
3588
3588







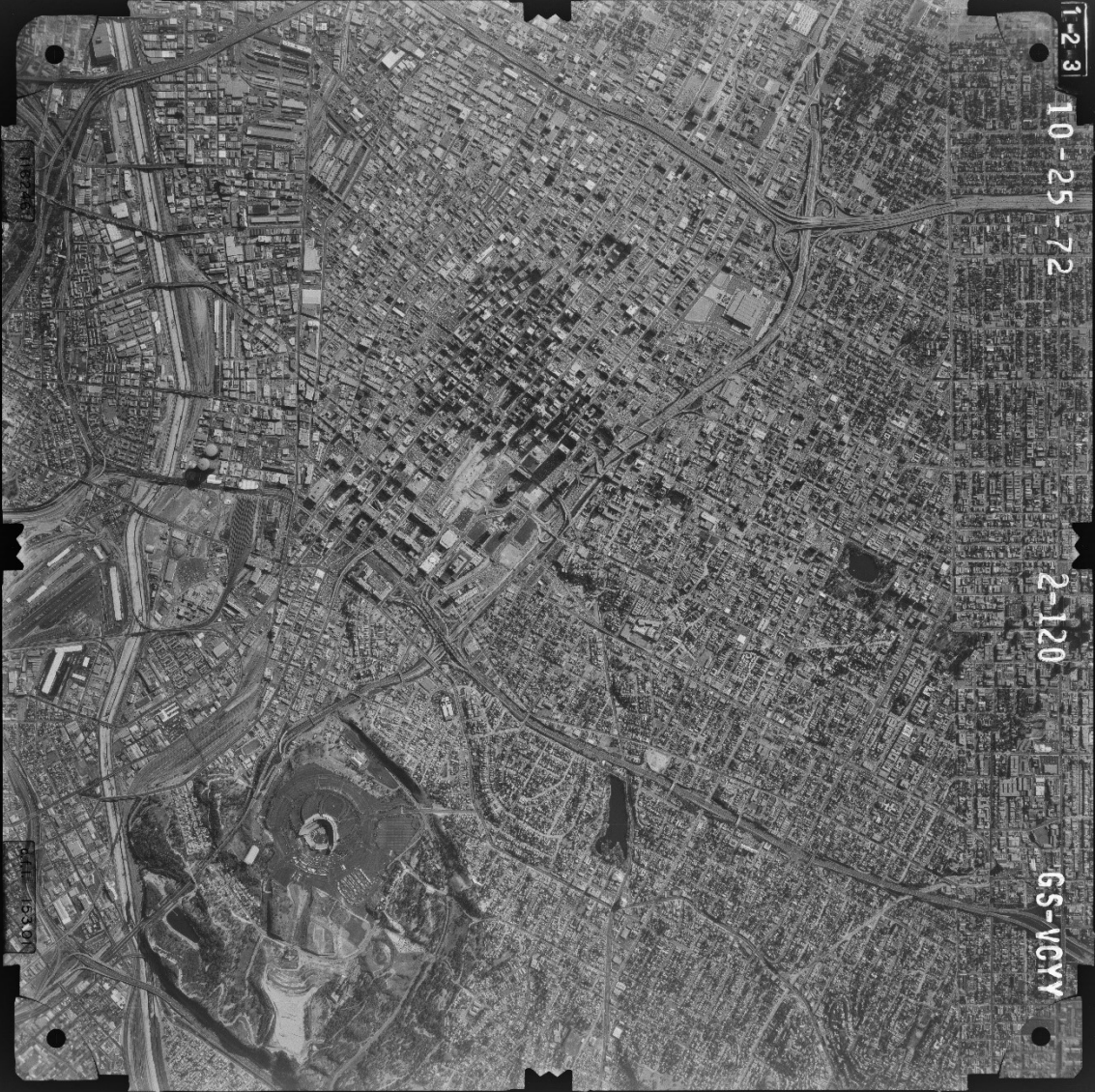


7-28-64

2 22

CS-VARW





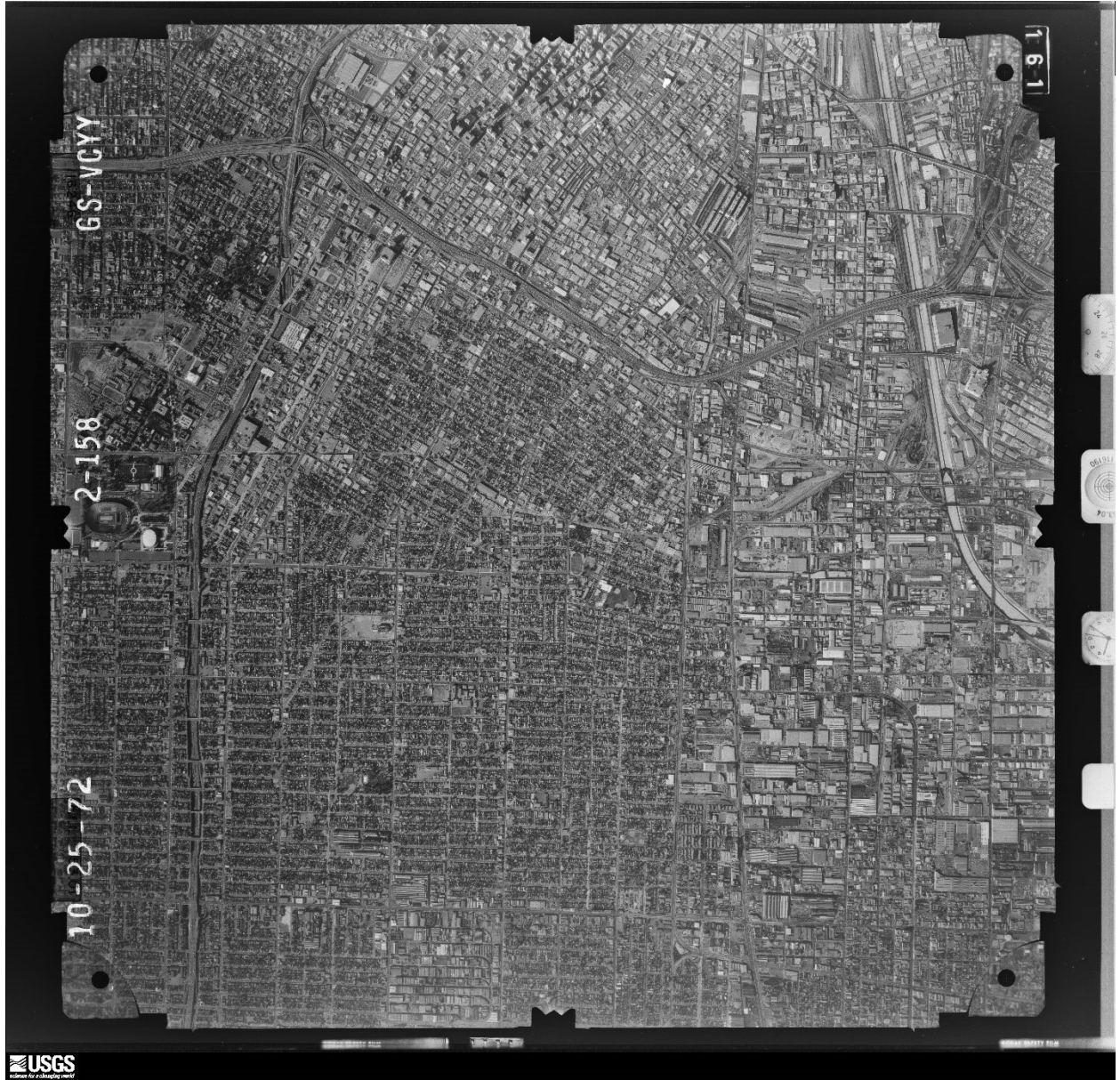
1-2-3

10-25-72

2-120

6S-VGYY

44-10307



GS-VCYY

2-158

10-25-72

161

USGS
Science For a Changing World







GS-V0YY

3-12

10-30-72

0-14

1030





GS-VCYY

3-65

10-30-72

153-01

118248

153.04
116130





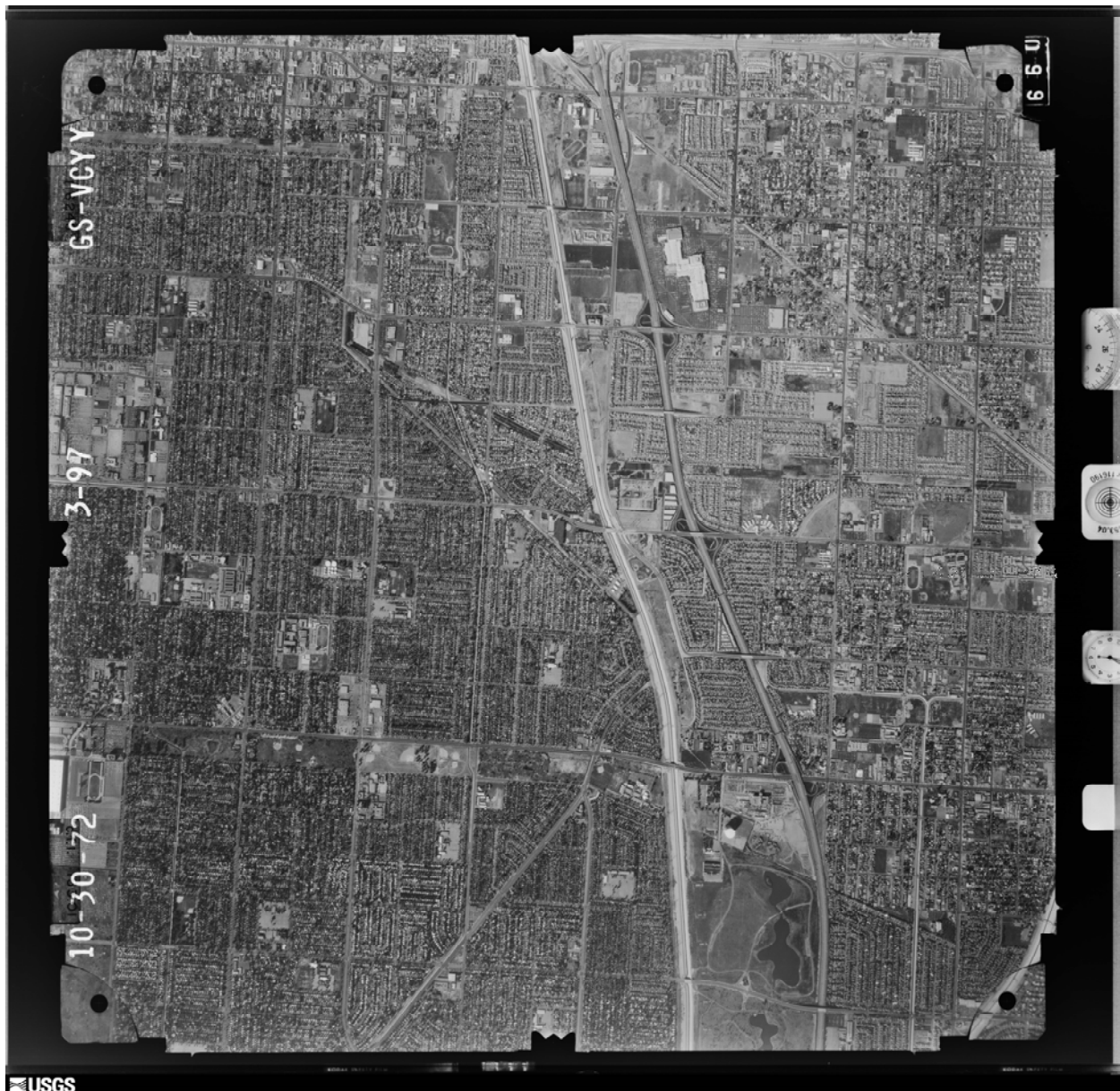
GS-VCYY

3-66

10-30-72

068





USGS



USGS



8-2-52

8-2-52

18-35

18-34

NY 2411

CS-VP

USGS



GS-VP

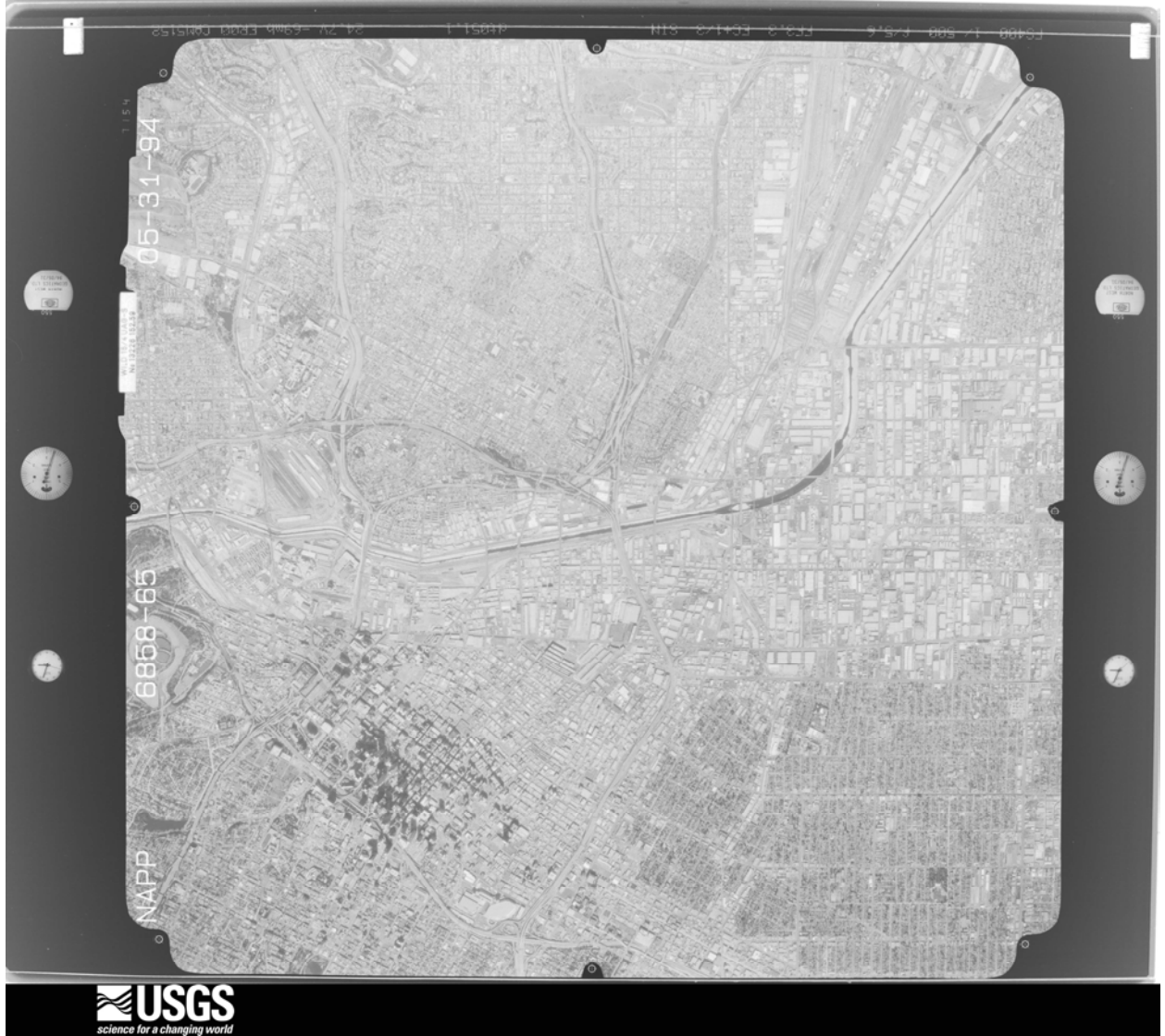
18-59

8-2-52

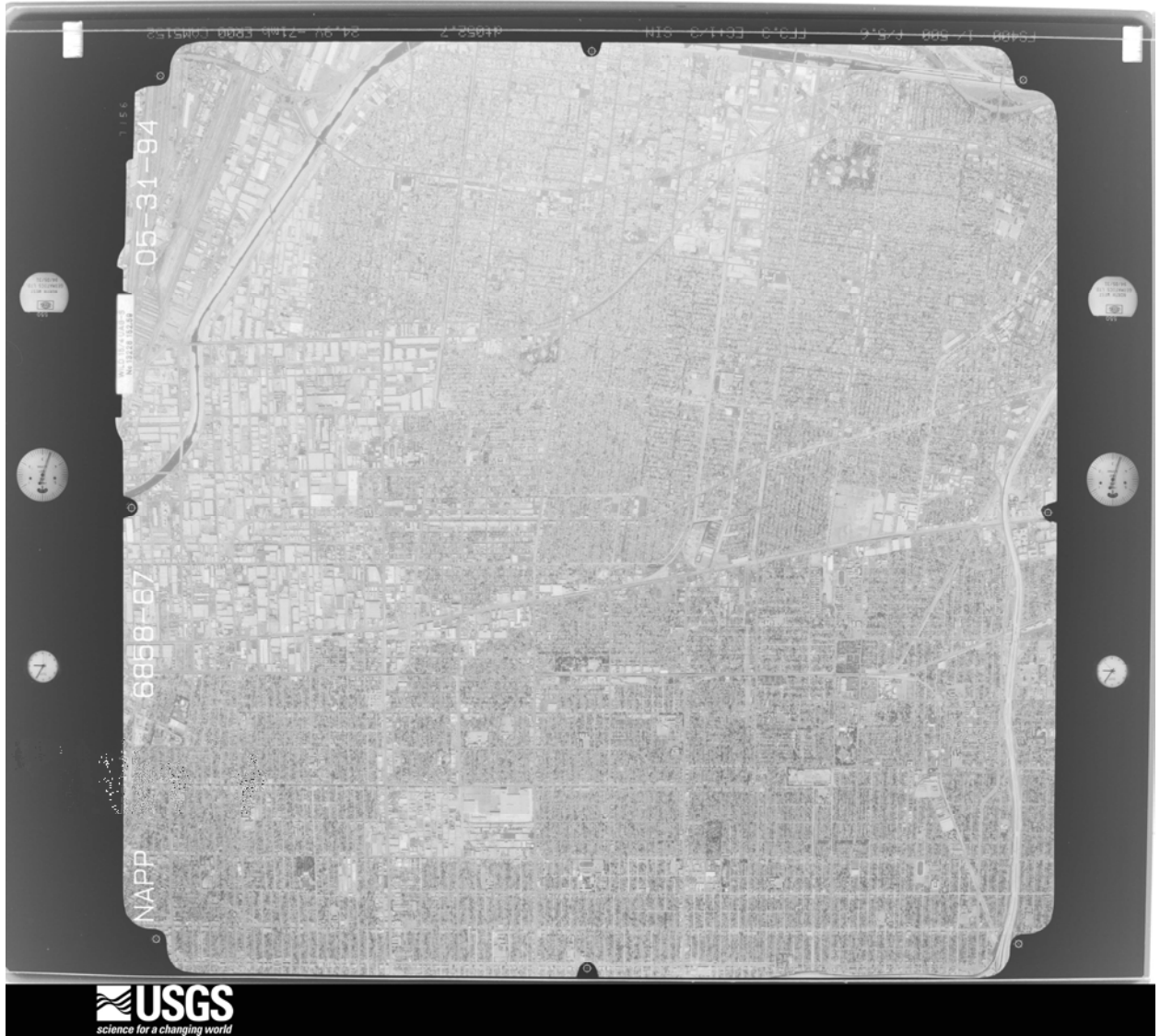
38-W-12RS-M840-12AF-15JUNE 48-1215-157,3-40000-PR38

37-W-12RS-M840-15JUNE 48-1215-157,3-40000-PR36





 **USGS**
science for a changing world



05-31-94

6858-67

NAPP

 **USGS**
science for a changing world



NAPP

8858-84

05-31-94

54400 17 500 65 4
E3 3 E3423 SIN
41047.1
24 5V - Zomb 5000 0405152

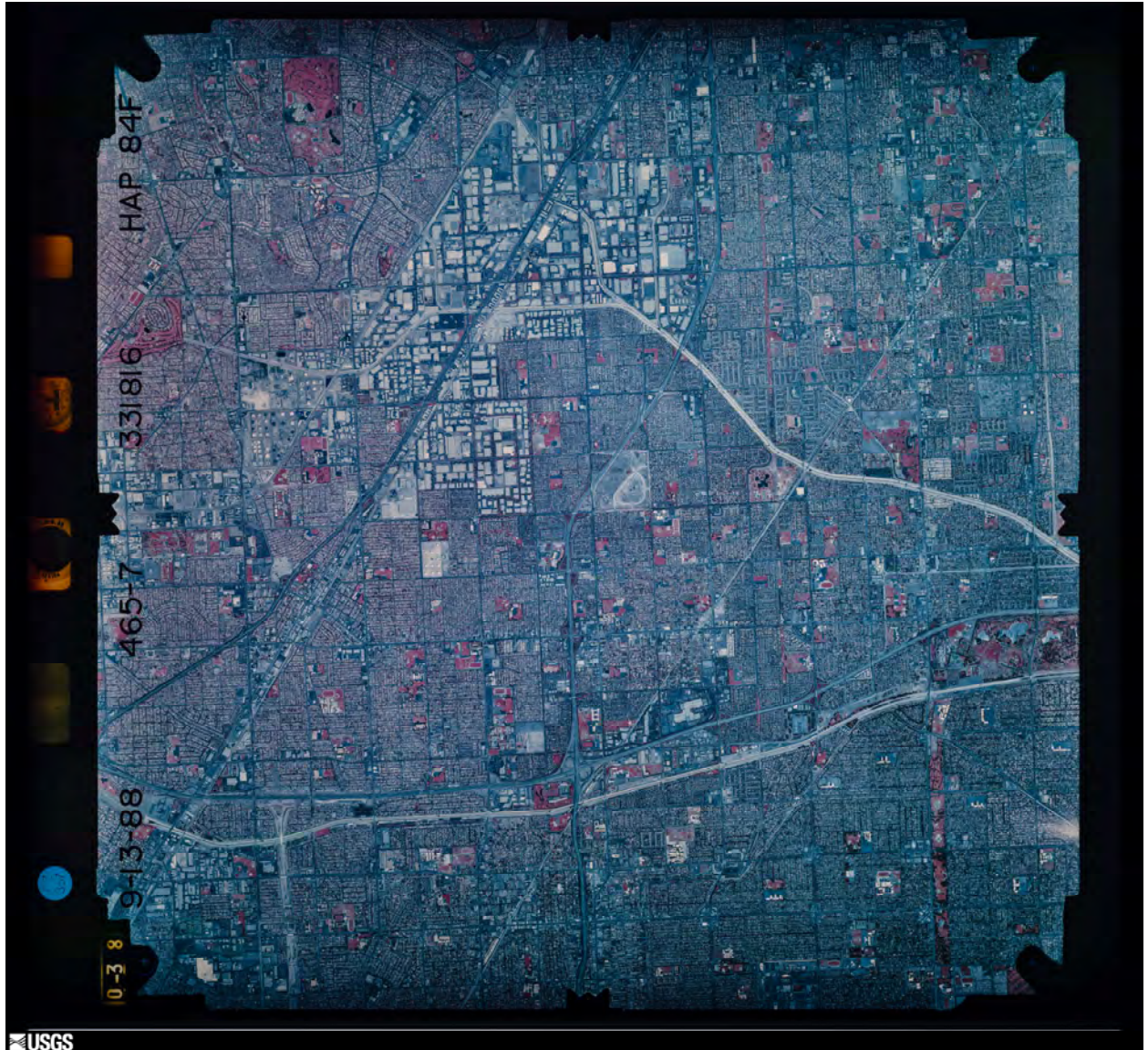
CL 1

ROYAL STATION

USGS
science for a changing world



ES488 1 450 6 25 6
FC 3 5041 2 31H
4858 5
25 11 - 72mb 5300 1 085152



USGS



9-13-88

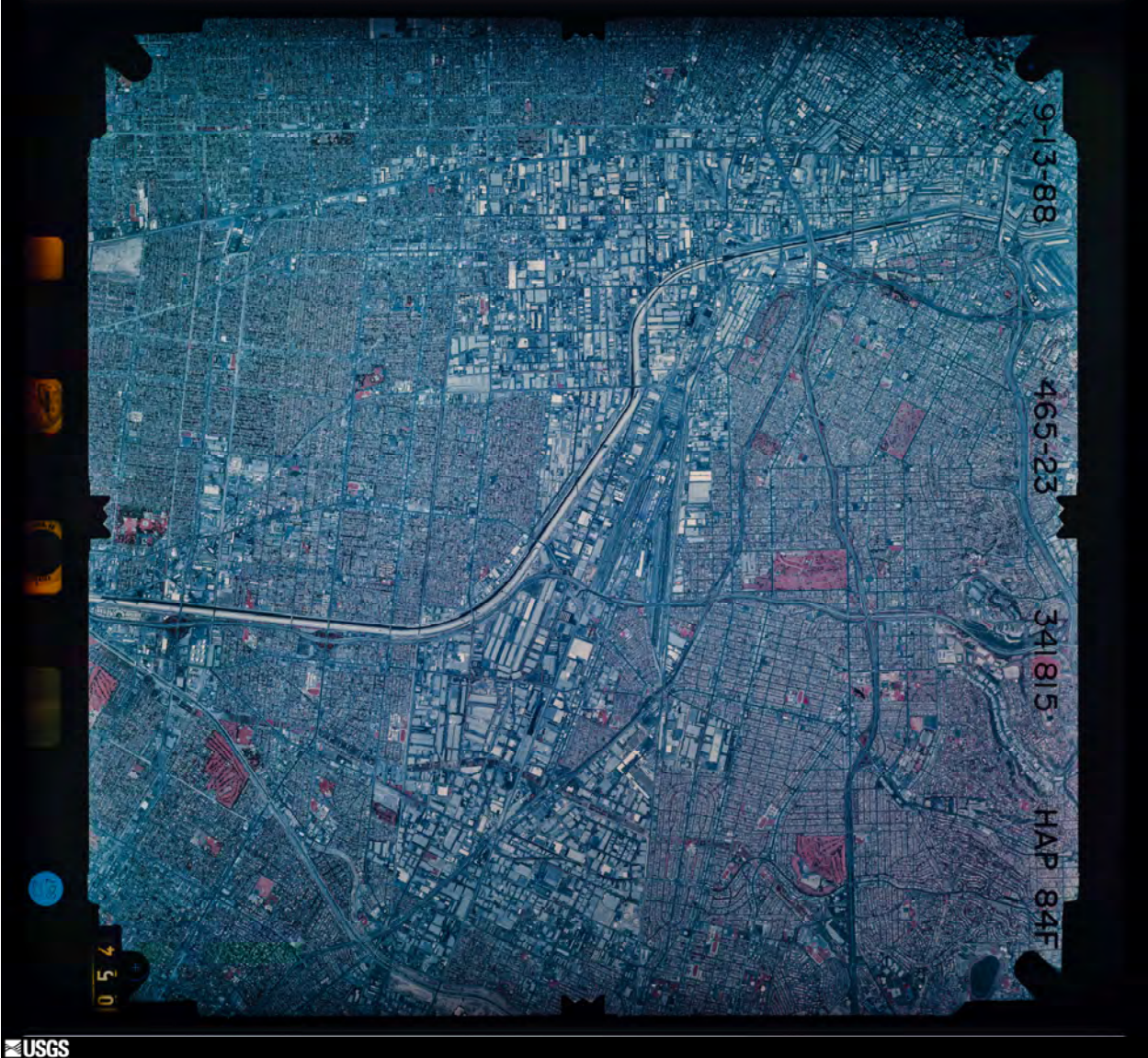
465-2

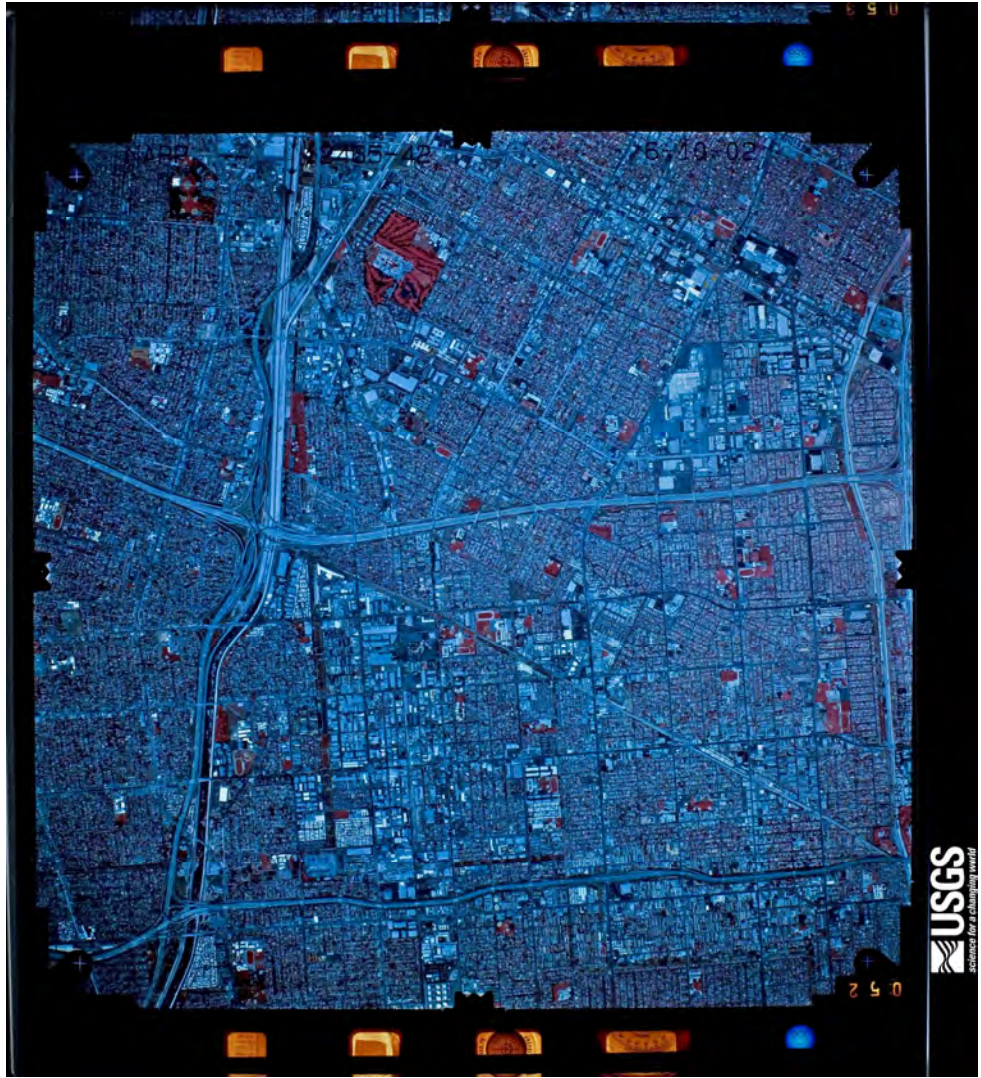
331815

HAP 84F

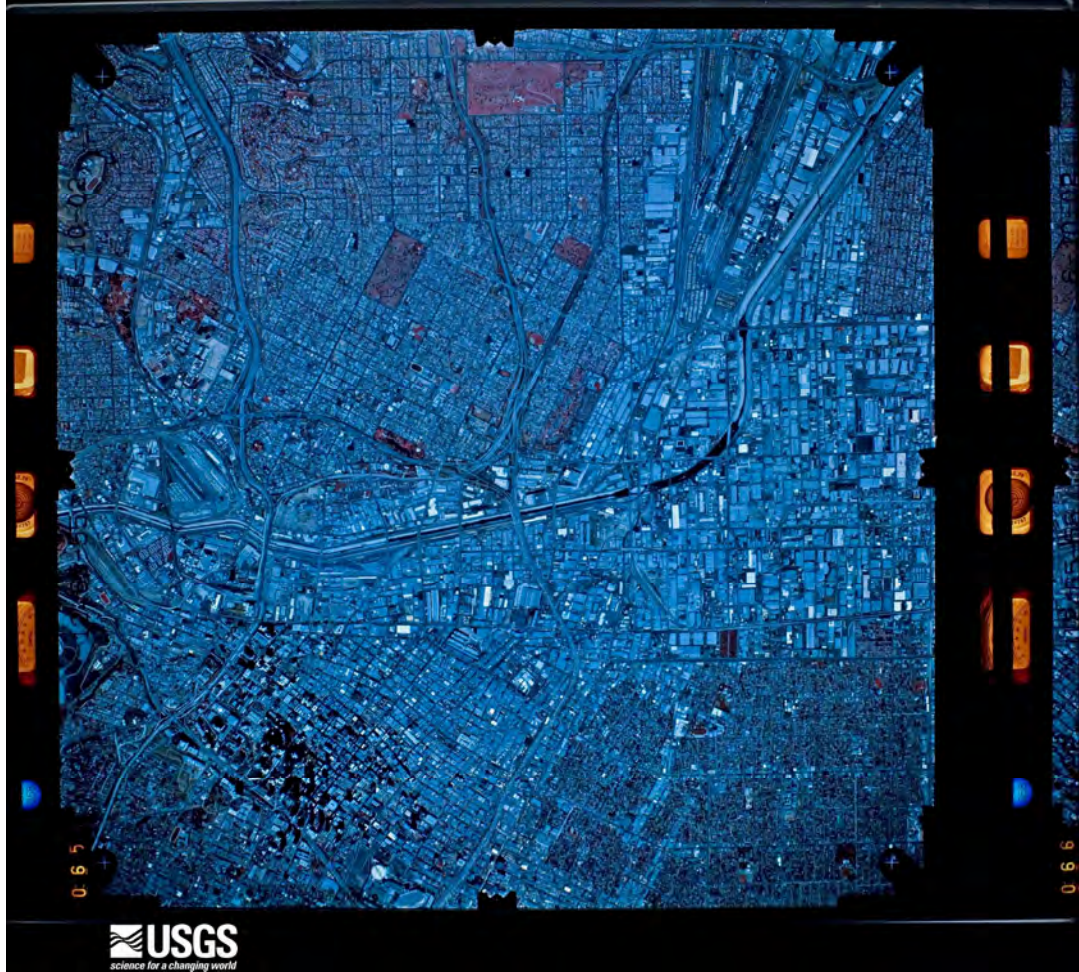
2 5 0

USGS

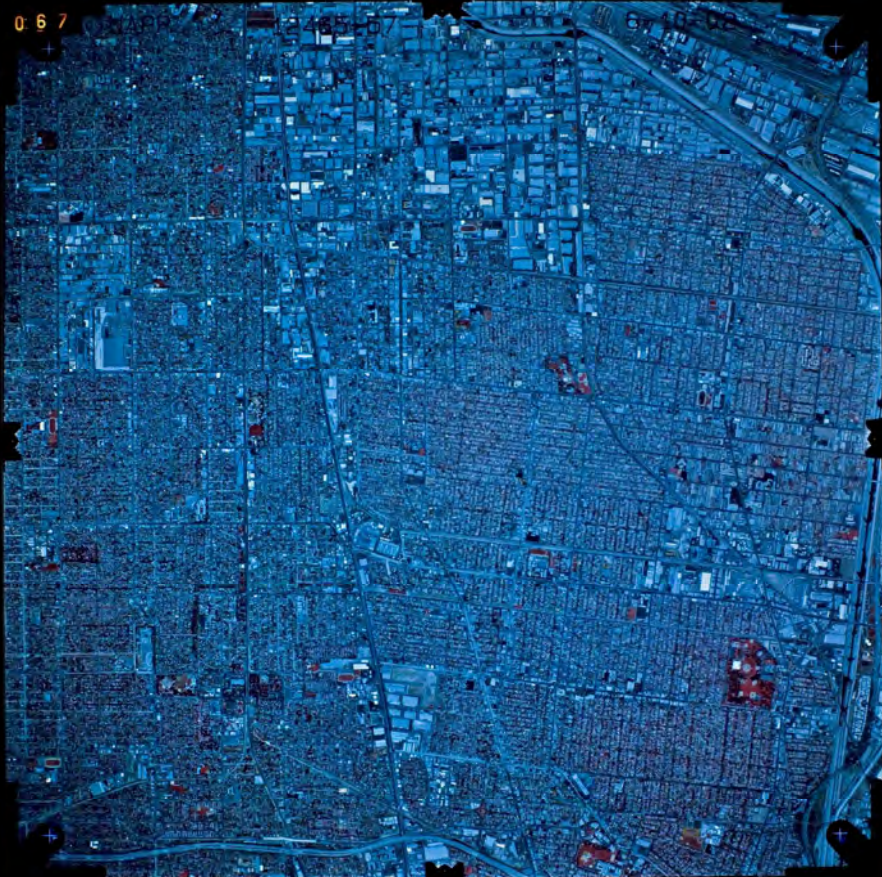




USGS
science for a changing world



USGS
From Earth to Sky



0 6 8

