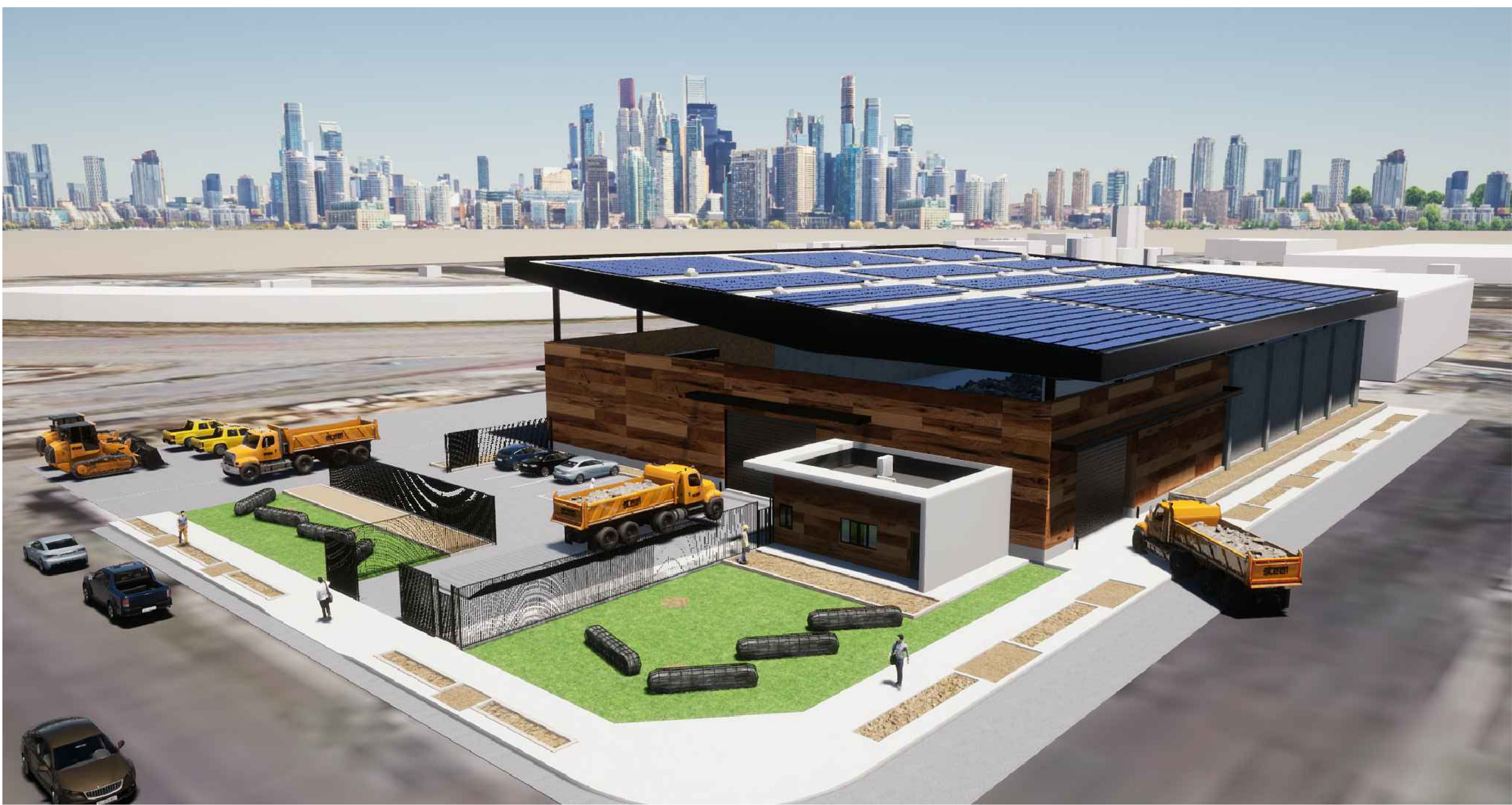


BUREAU OF ENGINEERING  
DEPARTMENT OF PUBLIC WORKS  
CITY OF LOS ANGELES

ASPHALT PLANT 1 - PHASE 2



PROJECT TEAM

CLIENT: **DEPARTMENT OF STREET SERVICES**  
**KEITH MOZEE**  
GENERAL MANAGER  
1149 S. BROADWAY, 4TH. FLOOR  
LOS ANGELES, CA 90015

CONSTRUCTION MANAGEMENT: **BUREAU OF ENGINEERING CONSTRUCTION MANAGEMENT GROUP**

**RICHARD LOUIE**  
GROUP MANAGER  
200 N. SPRING ST.  
14TH FLOOR  
LOS ANGELES, CA 90012

BID AND AWARD: **BUREAU OF ENGINEERING PROJECT AWARD AND CONTROL GREG VANDERGRIF**  
GROUP MANAGER

1149 S. BROADWAY  
1ST FLOOR  
LOS ANGELES, CA 90015

ENVIRONMENTAL: **BUREAU OF ENGINEERING ENVIRONMENTAL MANAGEMENT GROUP**

**MARIA MARTIN**  
GROUP MANAGER

1149 S. BROADWAY  
6TH FLOOR  
LOS ANGELES, CA 90015

SURVEY: **BUREAU OF ENGINEERING SURVEY DIVISION**

**WILLIAM KNIGHT**  
CHIEF SURVEYOR

201 N. FIGUEROA ST  
11TH FLOOR  
LOS ANGELES, CA 90012

GEOTECHNICAL: **BUREAU OF ENGINEERING GEOTECHNICAL ENGINEERING DIVISION**

**PATRICK SCHMIDT, P.E., G.E.**  
GROUP MANAGER

1149 S. BROADWAY  
1ST FLOOR  
LOS ANGELES, CA 90015

**BUREAU OF ENGINEERING STRUCTURAL DIVISION**

**SHAILESH PATEL, P.E., S.E.**  
DIVISION ENGINEER

1149 S. BROADWAY  
7TH FLOOR  
LOS ANGELES, CA 90015

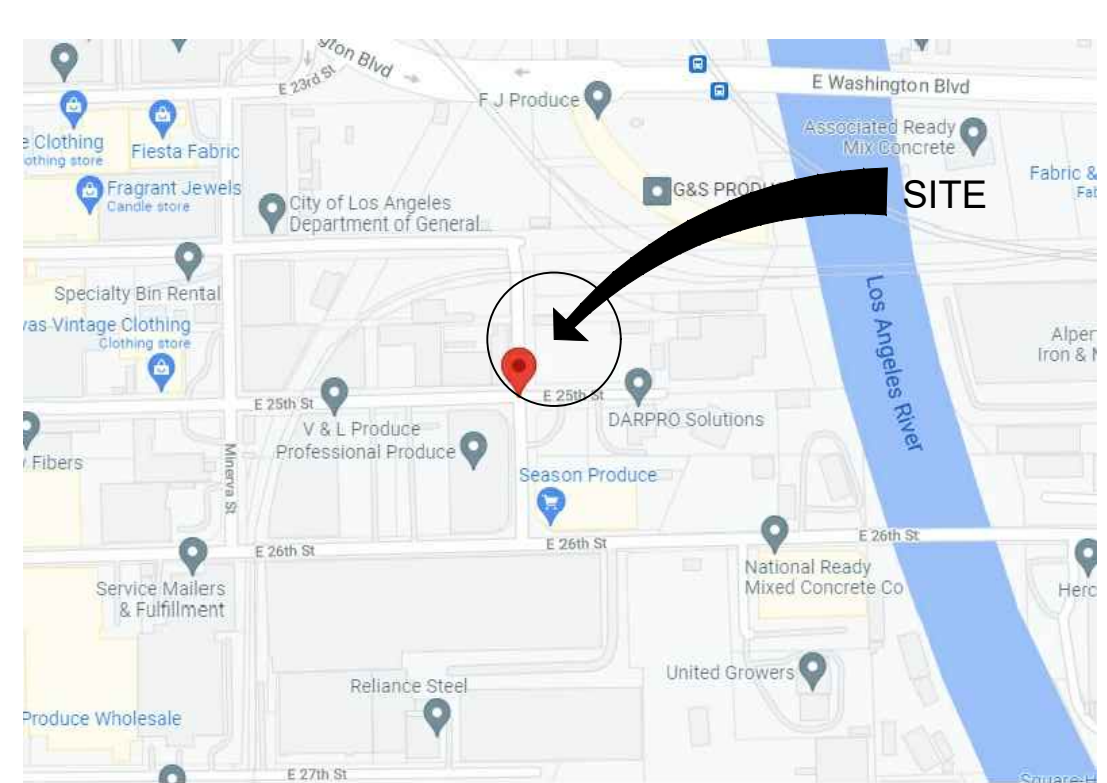
DESIGN: **BUREAU OF ENGINEERING ARCHITECTURAL DIVISION**

**STEVEN FIERCE**  
PRINCIPAL ARCHITECT

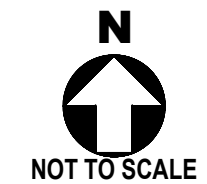
**SHUNYU ZHANG**  
PROJECT MANGER

1149 S. BROADWAY, SUITE 830  
LOS ANGELES, CA 90015  
PHN (213) 485-4000

**ELECTRICAL**  
T.B.D.



VICINITY MAP



NOT TO SCALE

**ENGINEERING**  
CITY OF LOS ANGELES

**BUREAU OF ENGINEERING**

VERTICAL CONTROL:  
HORIZONTAL CONTROL:

SHEET TITLE: COVER SHEET  
PROJECT: ASPHALT PLANT 1 - PHASE 2  
ADDRESS: 2601 E. 25th. STREET  
LOS ANGELES, CA.

**DEPARTMENT OF PUBLIC WORKS**

NO. \_\_\_\_\_ DATE \_\_\_\_\_ BY \_\_\_\_\_

REVISION DESCRIPTION

INDEX NO. \_\_\_\_\_ CIP NO. XXXX

**CITY OF LOS ANGELES**  
GARY LEE MOORE, P.E., ENV SP  
DESIGN GROUP

ARCHITECT: ZOHRA AKHTER  
DESIGNED BY: ZOHRA AKHTER  
DRAWN BY: T.Y. / R.H.  
CHECKED BY: ZOHRA AKHTER  
APPROVED BY: STEVEN FIERCE

WORK ORDER NO. \_\_\_\_\_ Project Number

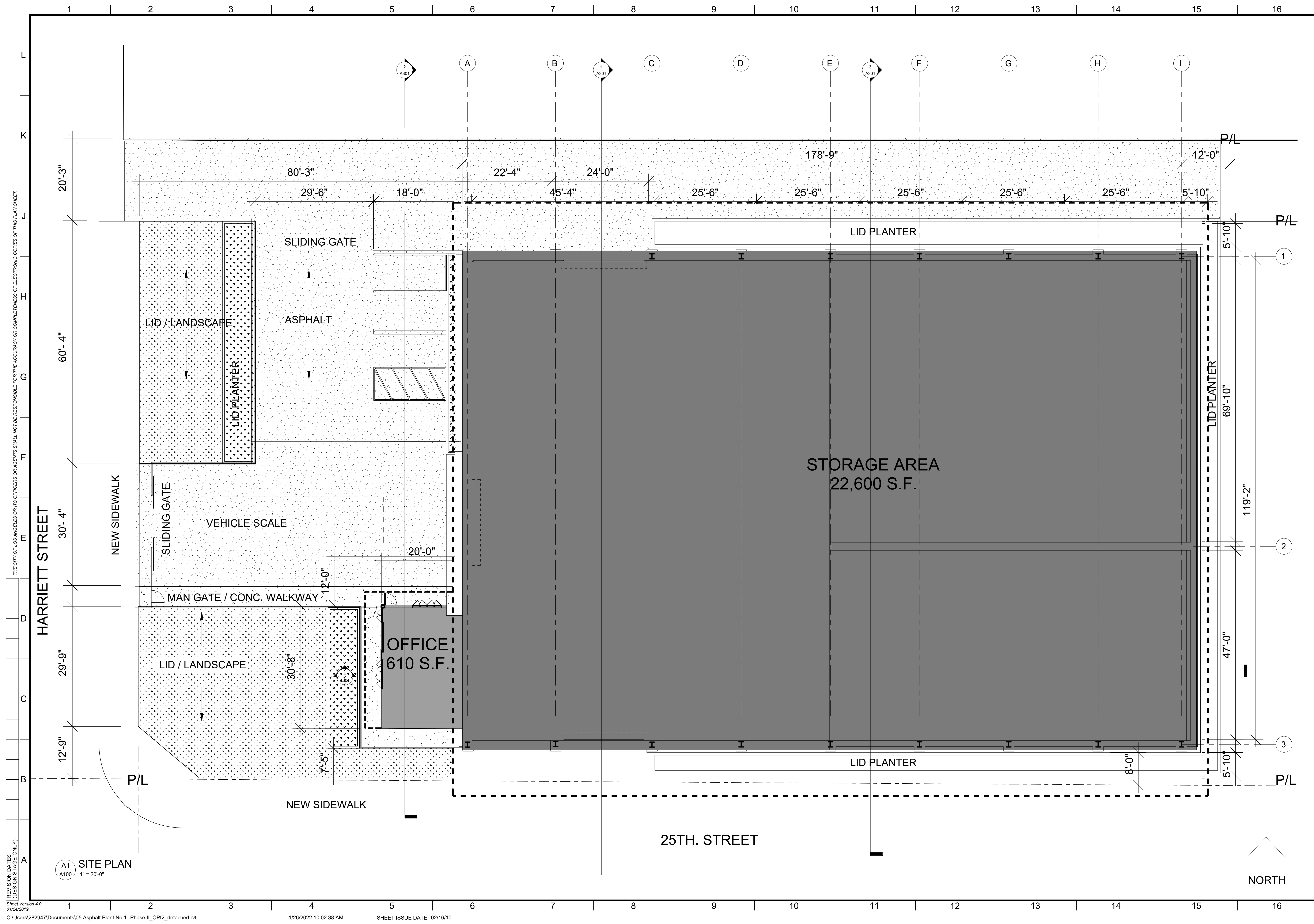
SHEET NO. **G001**

SHEET OF SHEETS

THE CITY OF LOS ANGELES OR ITS OFFICERS OR AGENTS SHALL NOT BE RESPONSIBLE FOR THE ACCURACY OR COMPLETENESS OF ELECTRONIC COPIES OF THIS PLAN SHEET.

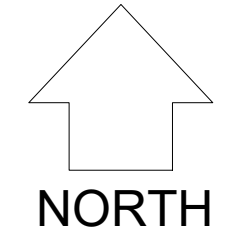
REVISION DATES (DESIGN STAGE ONLY)  
REVISION DATE (DESIGN STAGE ONLY)





THE CITY OF LOS ANGELES OR ITS OFFICERS OR AGENTS SHALL NOT BE RESPONSIBLE FOR THE ACCURACY OR COMPLETENESS OF ELECTRONIC COPIES OF THIS PLAN SHEET.  
 (REVISION DATES (DESIGN STAGE ONLY))  
 Sheet Version 4.0  
 01/24/2019  
 C:\Users\282947\Documents\05 Asphalt Plant No. 1-Phase II\_OPI2\_detached.rvt  
 1/26/2022 10:02:38 AM  
 SHEET ISSUE DATE: 02/16/10

**A1** SITE PLAN  
**A100** 1" = 20'-0"



**ENGINEERING**  
CITY OF LOS ANGELES

---

**DEPARTMENT OF PUBLIC WORKS**

VERTICAL CONTROL: HORIZONTAL CONTROL: SHEET TITLE: PROJECT: ADDRESS:	BY: DATE: REVISION DESCRIPTION: NO.: INDEX NO.:
BUREAU OF ENGINEERING SITE PLAN ASPHALT PLANT 1 - PHASE 2 2601 E. 25th STREET LOS ANGELES, CA.	CIP NO. XXXX

---

CITY ENGINEER: **GARY LEE MOORE, PE, ENV SP**  
 ARCHITECT: ZOHRA AKHTER  
 DESIGNED BY: ZOHRA AKHTER  
 DRAWN BY: TY /RH  
 CHECKED BY: ZOHRA AKHTER  
 APPROVED BY: STEVE FIERCE

---

WORK ORDER NO.:  
 Project Number

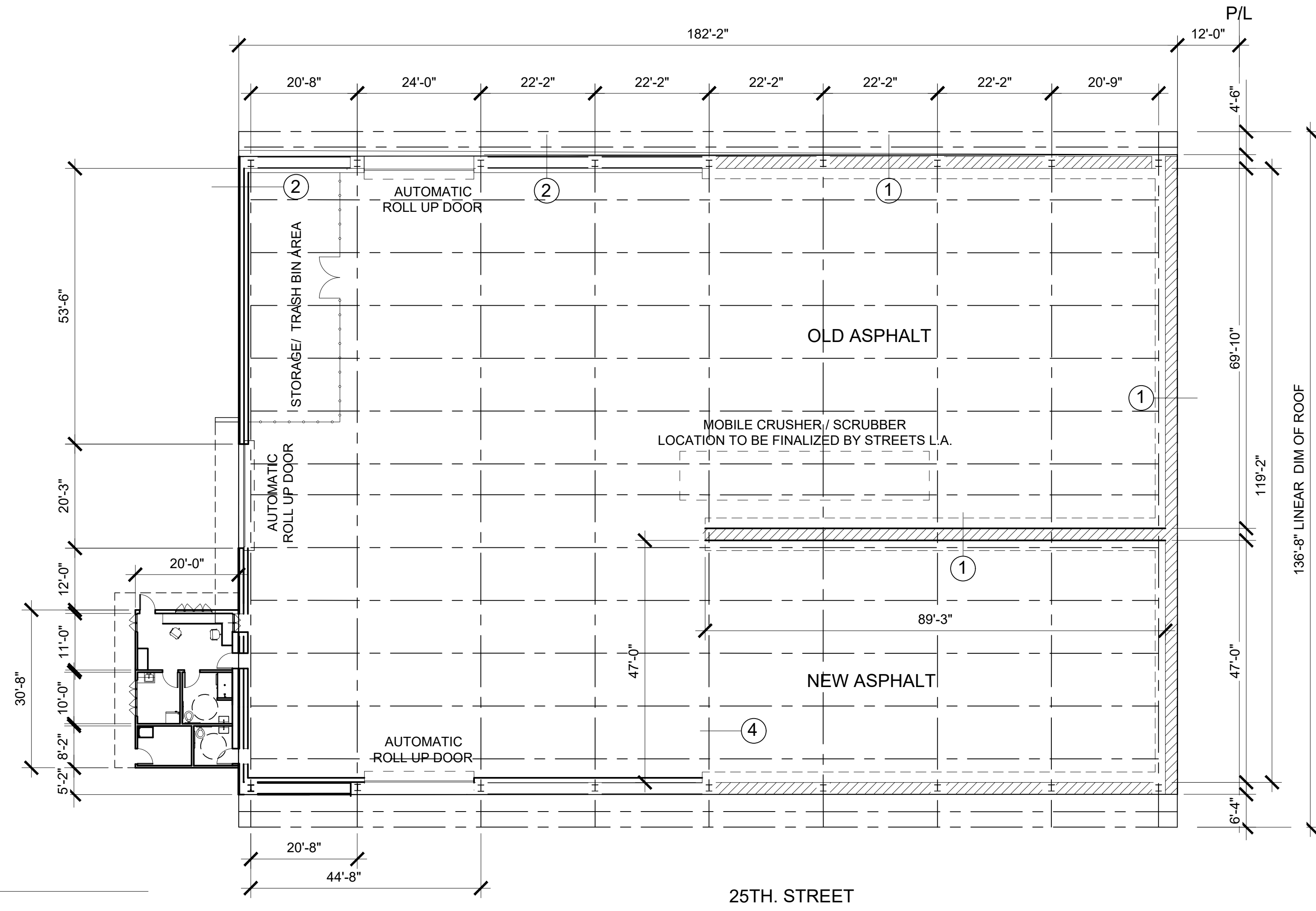
---

SHEET NO.:  
**A100**  
 SHEET OF SHEETS

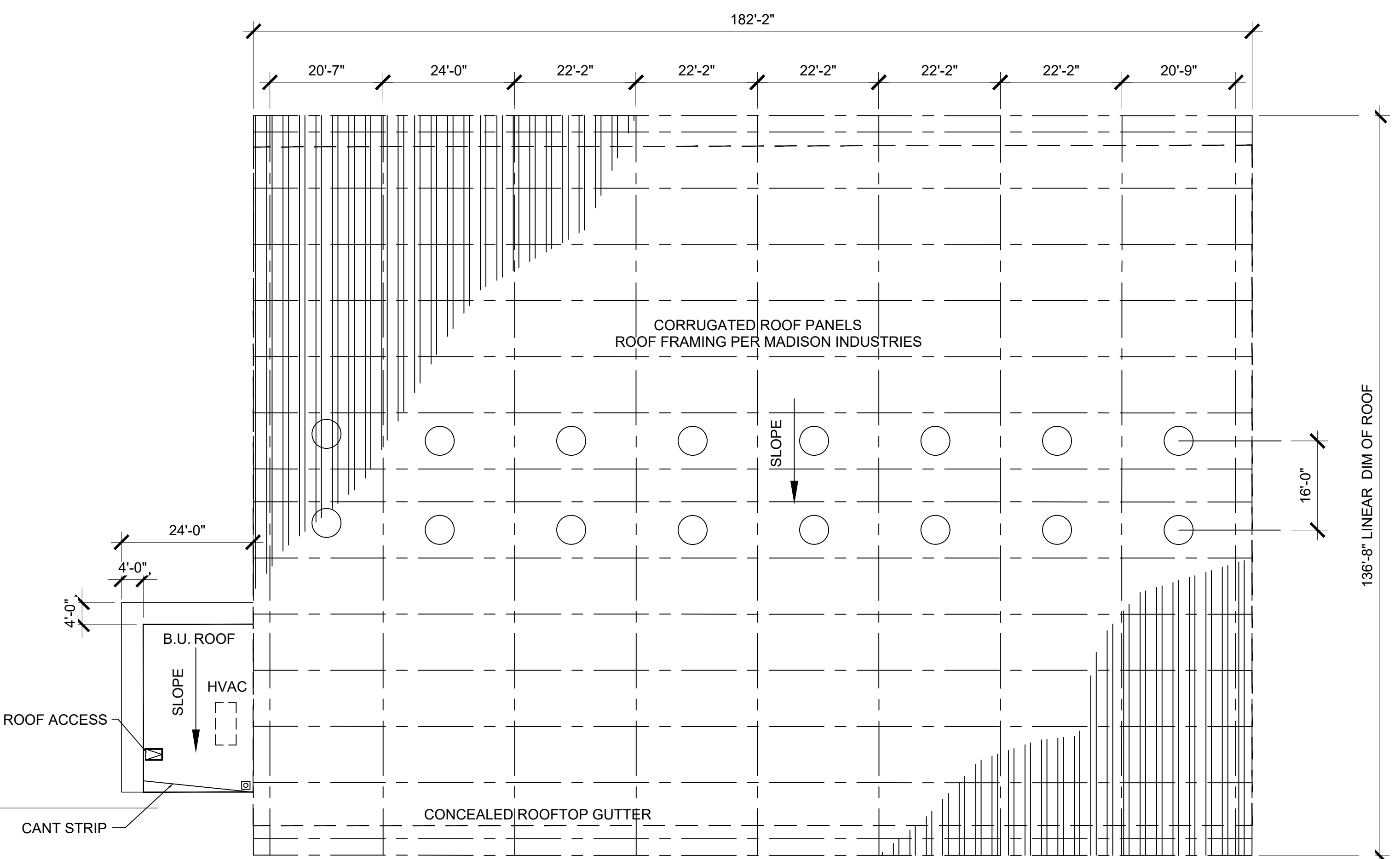
THIS PLAN WAS ELECTRONICALLY SIGNED AND STAMPED

1 2 3 4 5 6 7 8 9 10 11 12 13 14 15 16

HARRIETT STREET



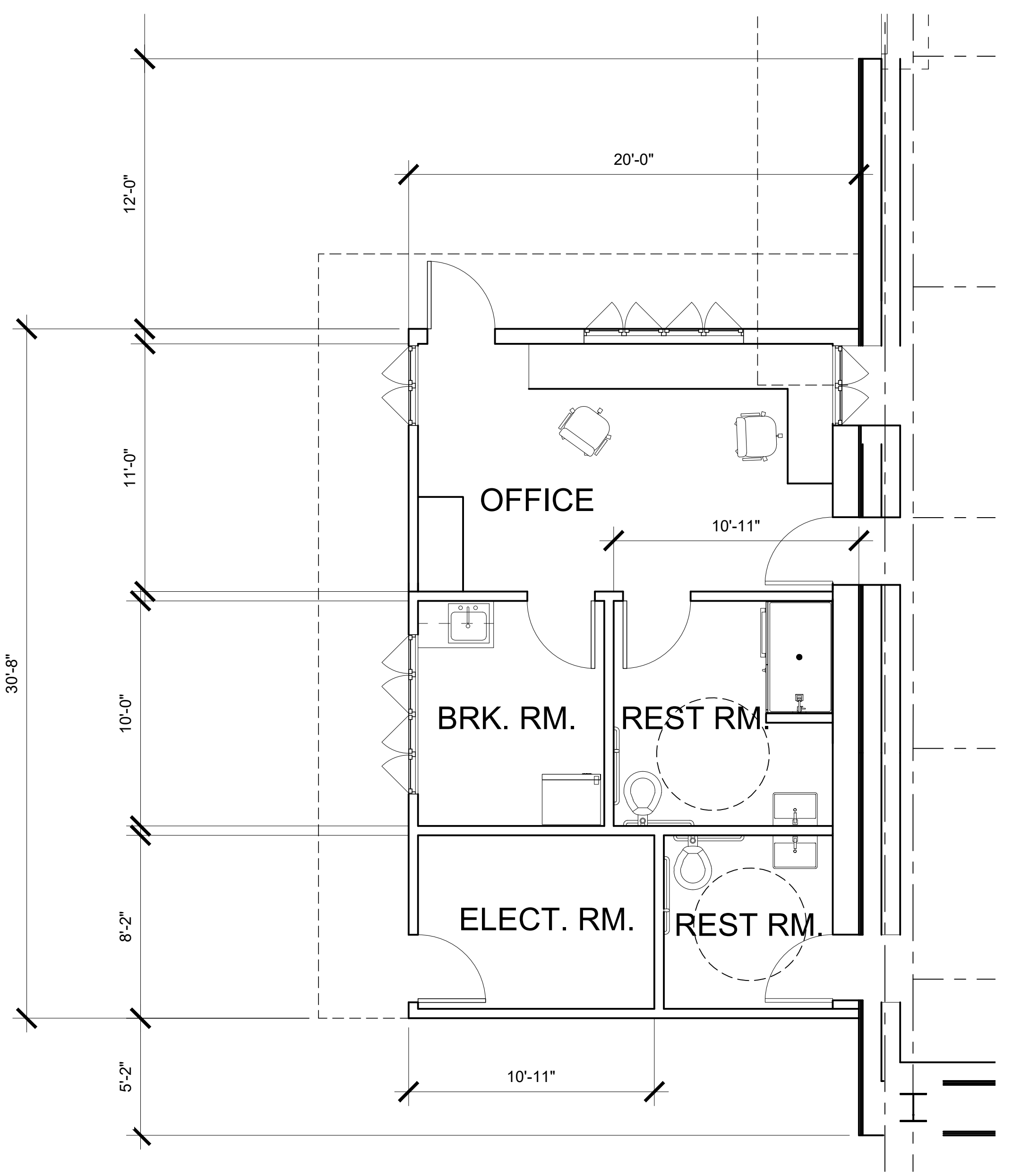
F1 FLOOR PLAN  
A101 1/16" = 1'-0"



A1 ROOF PLAN  
A101 1/16" = 1'-0"

WALL LEGEND

- ① WALL TYPE I- CAST IN PLACE CONCRETE PUSH WALL PER STRUCTURAL
- ② WALL TYPE II- RECLAIMED WOOD PANEL OVER PLYWOOD WALL WITH 10"X10" HSS METAL COLUMN AT 6' O.C. 25' HIGH, W/ 4' HIGH C.I.P. CONCRETE LOW WALL
- ③ WALL TYPE III- 6X WOOD STUD @ 12" O.C. WITH RIGID INSULATION. RECLAIMED WOOD PANEL FINISH ON THE EXTERIOR AND GYPSUM FINISH ON THE INTERIOR
- ④ 3' X 3' CAST IN PLACE CONC. COLUMN W/ EMBED TRUSS STRUCTURE PER STRUCTURAL



A11 ENLARGED OFFICE FLOOR PLAN  
A101 1/8" = 1'-0"

THE CITY OF LOS ANGELES OR ITS OFFICERS OR AGENTS SHALL NOT BE RESPONSIBLE FOR THE ACCURACY OR COMPLETENESS OF ELECTRONIC COPIES OF THIS PLAN SHEET.

REVISION DATES (DESIGN STAGE ONLY)

Sheet Version 4.0  
01/24/2019

SHEET ISSUE DATE:

**ENGINEERING**  
CITY OF LOS ANGELES

---

**BUREAU OF ENGINEERING**

---

DEPARTMENT OF PUBLIC WORKS

---

CITY OF LOS ANGELES

---

GARY LEE MOORE, P.E. ENV SP

---

ARCHITECT: ZOHA AKHTER  
DESIGNED BY: ZOHA AKHTER  
DRAWN BY: T.Y./R.H.  
CHECKED BY: ZOHA AKHTER  
APPROVED BY: STEVEN FIERCE

---

WORK ORDER NO. \_\_\_\_\_  
Project Number \_\_\_\_\_

---

SHEET NO. **A101**  
SHEET OF SHEETS

THIS PLAN WAS ELECTRONICALLY SIGNED AND STAMPED

VERTICAL CONTROL:  
HORIZONTAL CONTROL:

NO. \_\_\_\_\_  
REVISION DESCRIPTION \_\_\_\_\_  
DATE \_\_\_\_\_

CITY ENGINEER  
DESIGN GROUP

INDEX NO. XXXX

ADDRESS: 2601 E. 25th. STREET  
LOS ANGELES, CA.

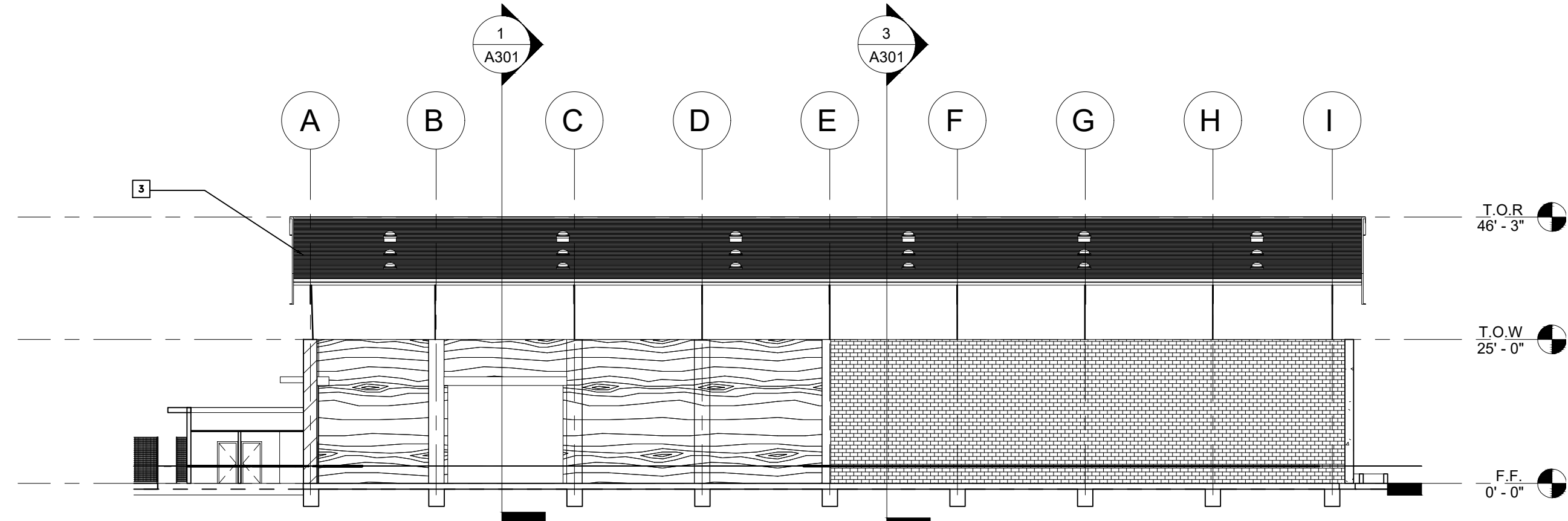


THE CITY OF LOS ANGELES OR ITS OFFICERS SHALL NOT BE RESPONSIBLE FOR THE ACCURACY OR COMPLETENESS OF ELECTRONIC COPIES OF THIS PLAN SHEET.

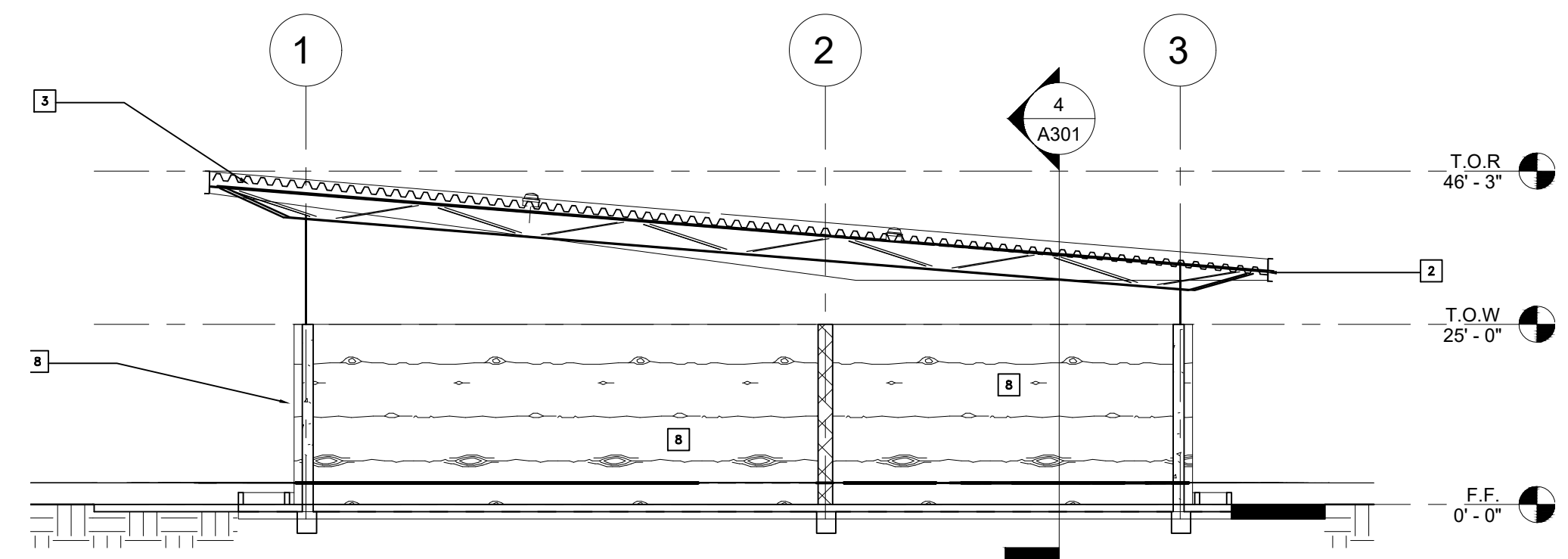
REVISION DATES (DESIGN STAGE ONLY)

**KEY NOTES**

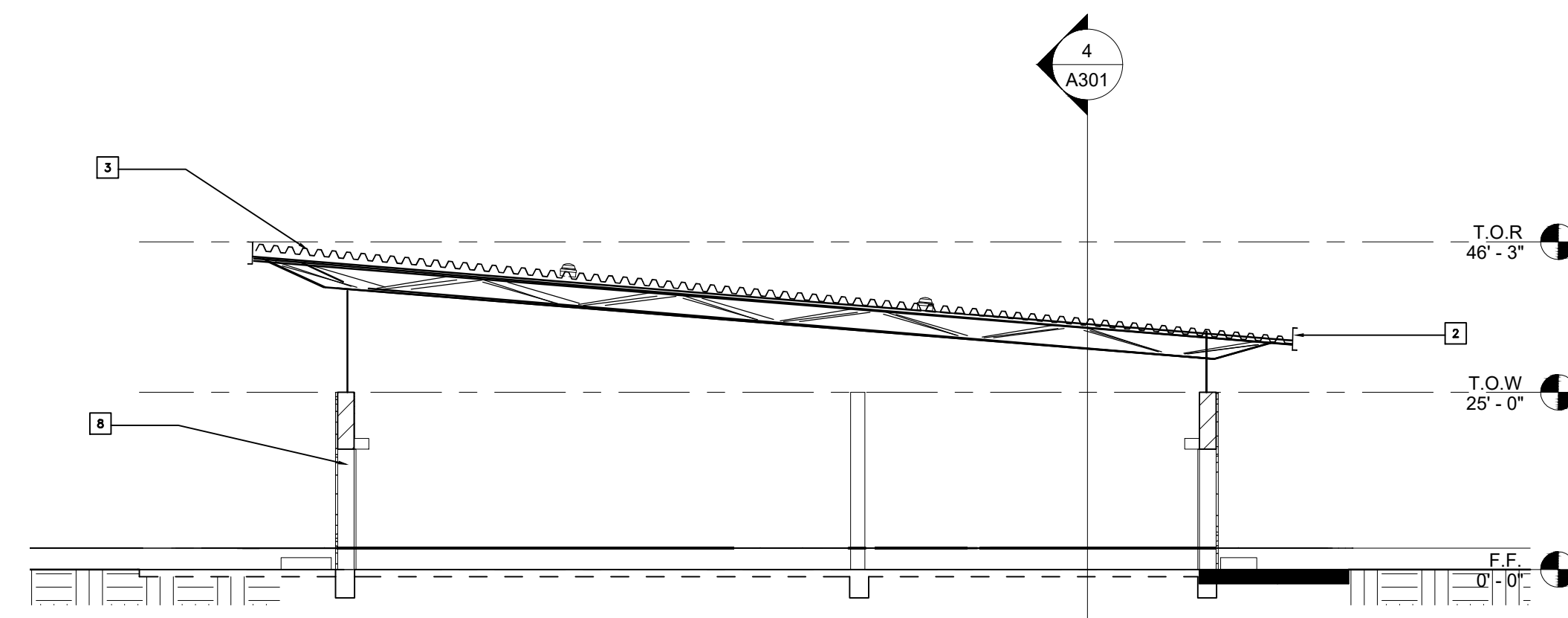
- 1 METAL ROOF OVER 3' DEEP METAL TRUSSES
- 2 CUSTOM METAL FASCIA
- 3 3X3 CIP CONCRETE COLUMN WITH W EMBEDDED TRUSS STRUCTURE PER STRUCTURAL
- 4 6X METAL WING WALL WITH CEMENT PLASTER FINISH
- 5 6X METAL OVERHANG WITH CEMENT PLASTER FINISH
- 6 C-CHANNEL 10" DEEP OVERHANG
- 7 WALL TYPE I- CAST IN PLACE CONCRETE PUSH WALL PER STRUCTURAL
- 8 WALL TYPE II- RECLAIMED WOOD PANEL OVER PLYWOOD WALL WITH 10"X10" HSS METAL COLUMN AT 6' O.C. 25' HIGH, W/ 4' HIGH C.I.P. CONCRETE LOW WALL
- 9 WALL TYPE III- 6X WOOD STUD @ 12" O.C. WITH RIGID INSULATION. RECLAIMED WOOD PANEL FINISH ON THE EXTERIOR AND GYPSUM FINISH ON THE INTERIOR
- 10 HORIZONTAL METAL FRAME 2' O.C.



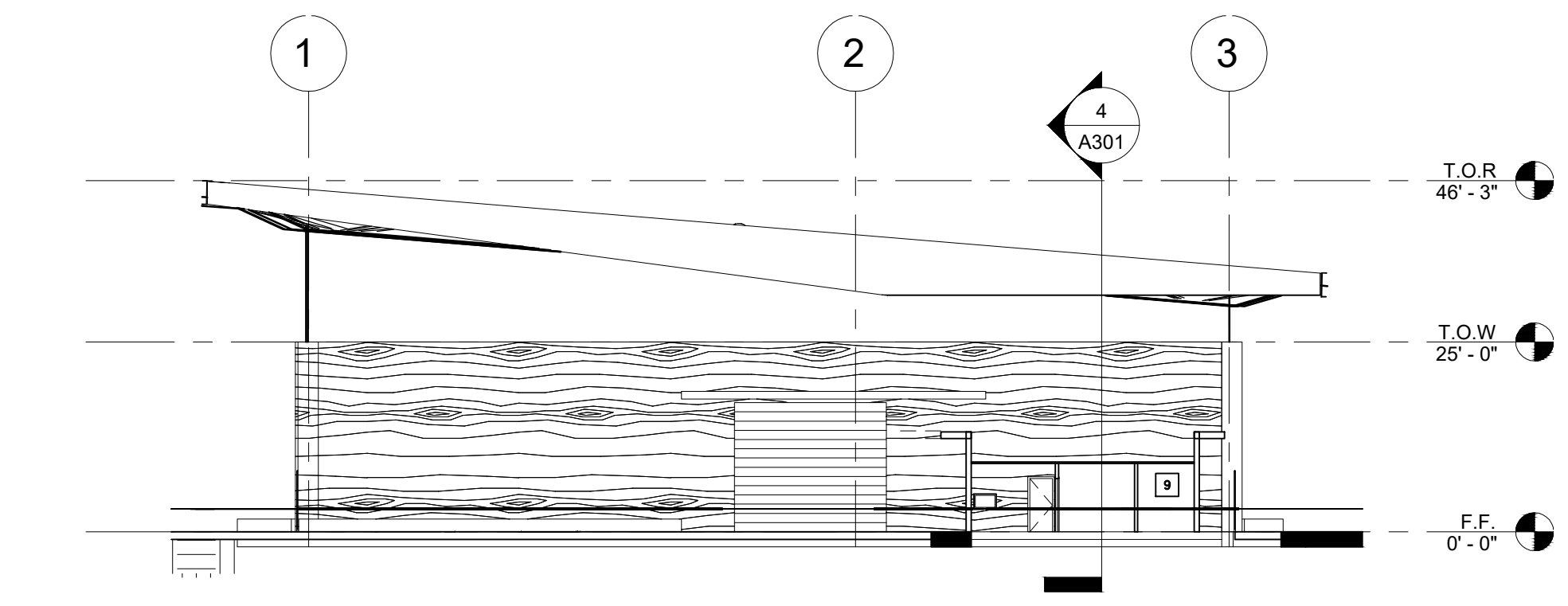
4 Section 5  
A101 1" = 20'-0"



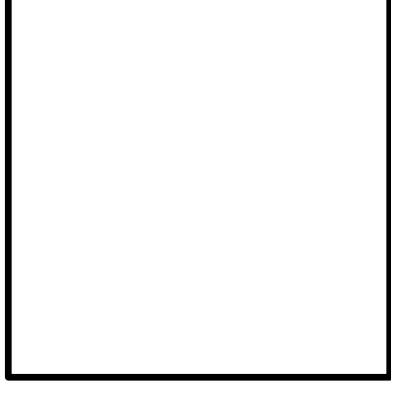
3 Section 4  
A101 1" = 20'-0"



1 Section 1  
A101 1" = 20'-0"



2 Section 3  
A102 1" = 20'-0"



BUREAU OF ENGINEERING VERTICAL CONTROL HORIZONTAL CONTROL	SHEET TITLE SECTIONS PROJECT: ASPHALT PLANT 1 - PHASE 2 ADDRESS: 2801 E. 25th STREET LOS ANGELES, CA.
---	---

DEPARTMENT OF PUBLIC WORKS NO. _____ REVISION DESCRIPTION DATE _____ BY _____	CITY ENGINEER GARY LEE MOORE, PE, ENV SP DESIGN GROUP ARCHITECT: ZOHRARAKHTER DESIGNED BY: ZOHRARAKHTER DRAWN BY: TY /RH CHECKED BY: ZOHRARAKHTER APPROVED BY: STEVEN FIERCE
---	---

WORK ORDER NO. Project Number	INDEX NO. CIP NO. XXXX
----------------------------------	------------------------------

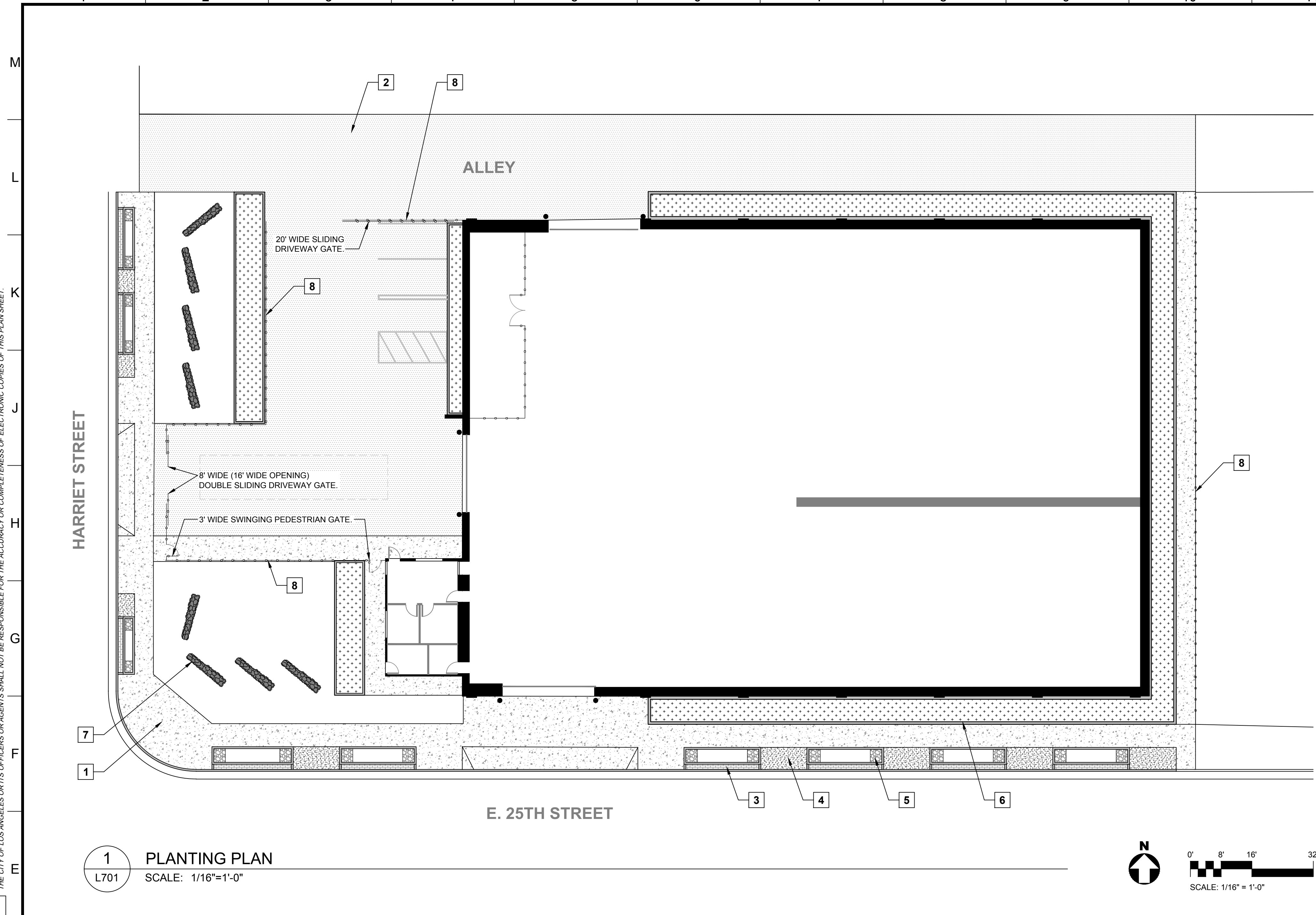
SHEET NO. <b>A301</b>	SHEET OF SHEETS
--------------------------	-----------------







THE CITY OF LOS ANGELES OR ITS OFFICERS OR AGENTS SHALL NOT BE RESPONSIBLE FOR THE ACCURACY OR COMPLETENESS OF ELECTRONIC COPIES OF THIS PLAN SHEET.



**1** PLANTING PLAN  
L701 SCALE: 1/16"=1'-0"



**LANDSCAPE CONSTRUCTION NOTES**

- LANDSCAPE PLANS PROVIDED BY THE CITY ARE CONCEPTUAL. THE DESIGN CONSULTANT SHALL PROVIDE A COMPLETE SITE HARDSCAPE DESIGN / LANDSCAPE CONSTRUCTION PLAN FOR REVIEW AND APPROVAL BY CITY STAFF.
- THE DESIGN CONSULTANT SHALL MEET ALL APPLICABLE CODE AND ORDINANCE REQUIREMENTS AND SHALL PROVIDE ALL REQUIRED SUBMITTALS FOR PLAN CHECK APPROVAL.
- REFER TO LANDSCAPE CONSTRUCTION DETAIL FILES PROVIDED BY THE CITY. THE DESIGN CONSULTANT SHALL USE THE CITY-PROVIDED CONSTRUCTION DETAILS WHERE APPLICABLE. SOME SPECIFICATION MODIFICATIONS MAY BE NECESSARY TO ACCOUNT FOR UNIQUE PROJECT CONDITIONS. THE DESIGN CONSULTANT SHALL SUBMIT TO CITY STAFF FOR REVIEW AND APPROVAL ALL DETAIL MODIFICATIONS AND/OR NEW DETAILS THAT THE DESIGN CONSULTANT DETERMINES TO BE REQUIRED.
- REFER TO LANDSCAPE CONSTRUCTION SPECIFICATION FILES PROVIDED BY THE CITY. THE DESIGN CONSULTANT SHALL USE THE CITY-PROVIDED SPECIFICATIONS WHERE APPLICABLE. SOME SPECIFICATION MODIFICATIONS MAY BE NECESSARY TO ACCOUNT FOR UNIQUE PROJECT CONDITIONS. THE DESIGN CONSULTANT SHALL SUBMIT TO CITY STAFF FOR REVIEW AND APPROVAL ALL SPECIFICATION MODIFICATIONS AND/OR NEW SPECIFICATIONS THAT THE DESIGN CONSULTANT DETERMINES TO BE REQUIRED.
- REFER TO STANDARD PLAN FILES PROVIDED BY THE CITY. ADDITIONAL STANDARD PLAN FILES ARE AVAILABLE ONLINE AT [HTTPS://ENG2.LACITY.ORG/TECHDOCS/STDPLANS/S-400.HTM](https://eng2.lacity.org/techdocs/stdplans/s-400.htm). THE DESIGN CONSULTANT SHALL USE STANDARD PLANS, AS APPROPRIATE, FOR ALL APPLICABLE WORK.

**LANDSCAPE CONSTRUCTION LEGEND**

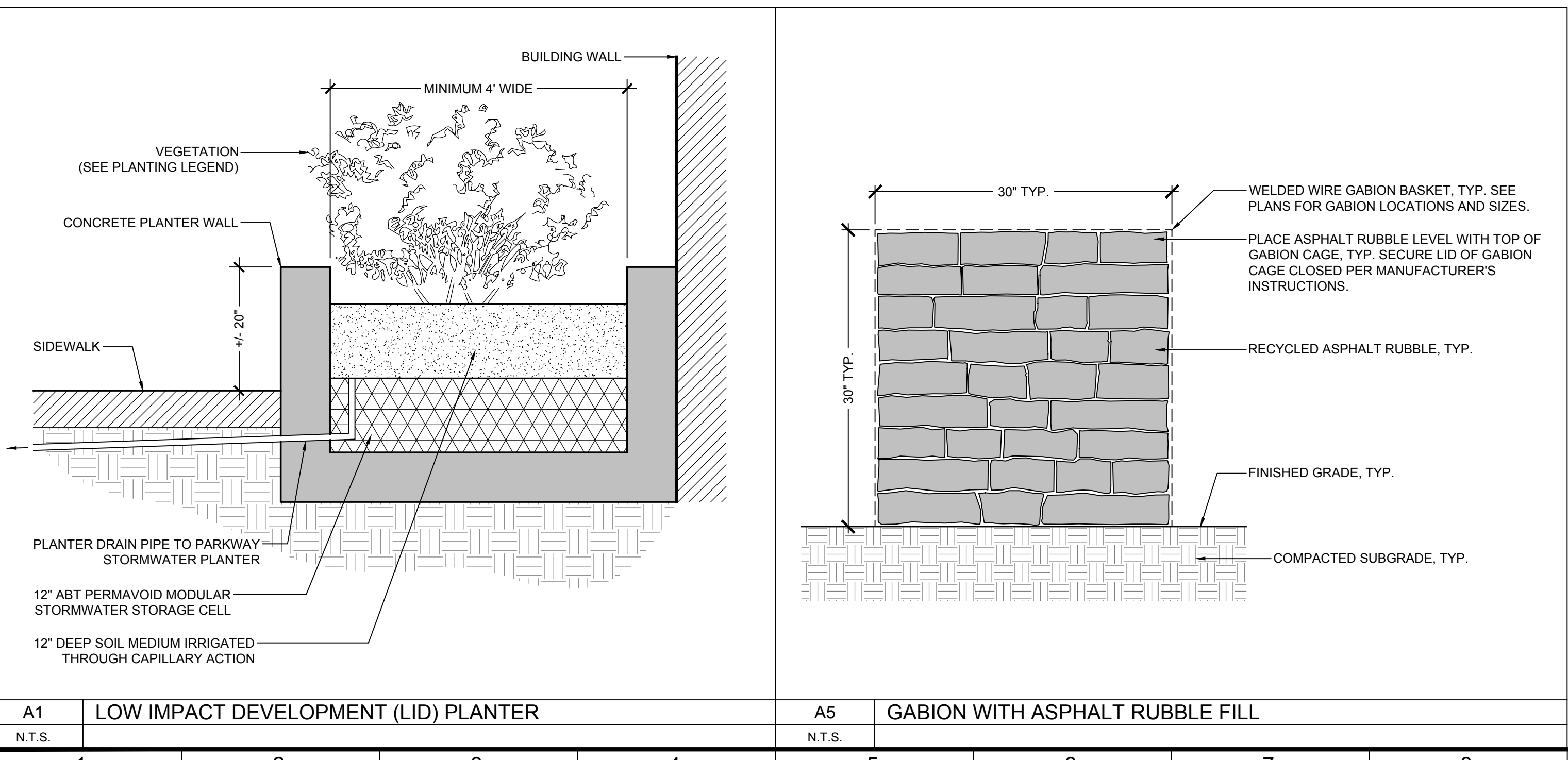
KEYNOTE	SYMBOL	DESCRIPTION	DETAIL	QUANTITY*
1	[Symbol]	NEW CAST-IN-PLACE CONCRETE PAVING	A1/L401 STANDARD PLANS S-410-2, S-430-1, S-440-4, S-442-6 AND S-444-0	5,135 S.F.
2	[Symbol]	NEW ASPHALT PAVING	A5/L401	11,125 S.F.
3	[Symbol]	PRE-CAST PERMEABLE PAVERS	STANDARD PLAN S-489-0	215 S.F.
4	[Symbol]	UNSTABILIZED DECOMPOSED GRANITE IN PARKWAY TREE WELLS	STANDARD PLANS S-450-4 AND S-663-1	425 S.F.
5	[Symbol]	COBBLESTONE RIPRAP AT STORMWATER PLANTER INLETS & OUTLETS	STANDARD PLANS S-480-0 AND S-482-0	160 S.F.
6	[Symbol]	LOW IMPACT DEVELOPMENT (LID) PLANTER BOXES	A9/L401	3,140 S.F.
7	[Symbol]	FREE-STANDING GABION WALL WITH RECYCLED ASPHALT RUBBLE FILL	A13/L401	96 L.F.
8	[Symbol]	OMEGA SECUR DOUBLE WIRE STEEL FENCE SYSTEM (OR EQUAL)	SEE MANUFACTURER WEBSITE FOR DETAILS AND SPECIFICATIONS	323 L.F. (FENCING) 42 L.F. (GATES)

\* QUANTITIES PROVIDED FOR THE CONVENIENCE OF THE CONTRACTOR ONLY. THE CONTRACTOR SHALL BE RESPONSIBLE FOR VERIFYING QUANTITIES FOR THE PURPOSES OF BIDDING AND CONSTRUCTION OF THE PROJECT.

**APPLICABLE STANDARD PLANS\***

STANDARD PLAN NUMBER	DESCRIPTION
S-410-2	CURB AND GUTTER DETAILS
S-430-1	CONCRETE JOINT DETAILS
S-440-4	DRIVEWAY DETAILS
S-442-6	CURB RAMP DETAILS
S-444-0	SIDEWALK DETAILS
S-450-4	TREE WELL SIZE AND COVER DETAILS
S-480-0	GREEN STREETS - GENERAL REQUIREMENTS
S-482-0	PARKWAY SWALE IN LOCAL / COLLECTOR STREETS
S-489-0	PERMEABLE PAVERS IN PARKWAY
S-663-1	TREE STAKING AND GUYING DETAILS

\* APPLICABLE STANDARD PLAN PDF FILES ARE INCLUDED IN DRAWING PACKAGE. STANDARD PLAN FILES ARE ALSO AVAILABLE ONLINE AT [HTTPS://ENG2.LACITY.ORG/TECHDOCS/STDPLANS/S-400.HTM](https://eng2.lacity.org/techdocs/stdplans/s-400.htm).



**ENGINEERING**  
CITY OF LOS ANGELES

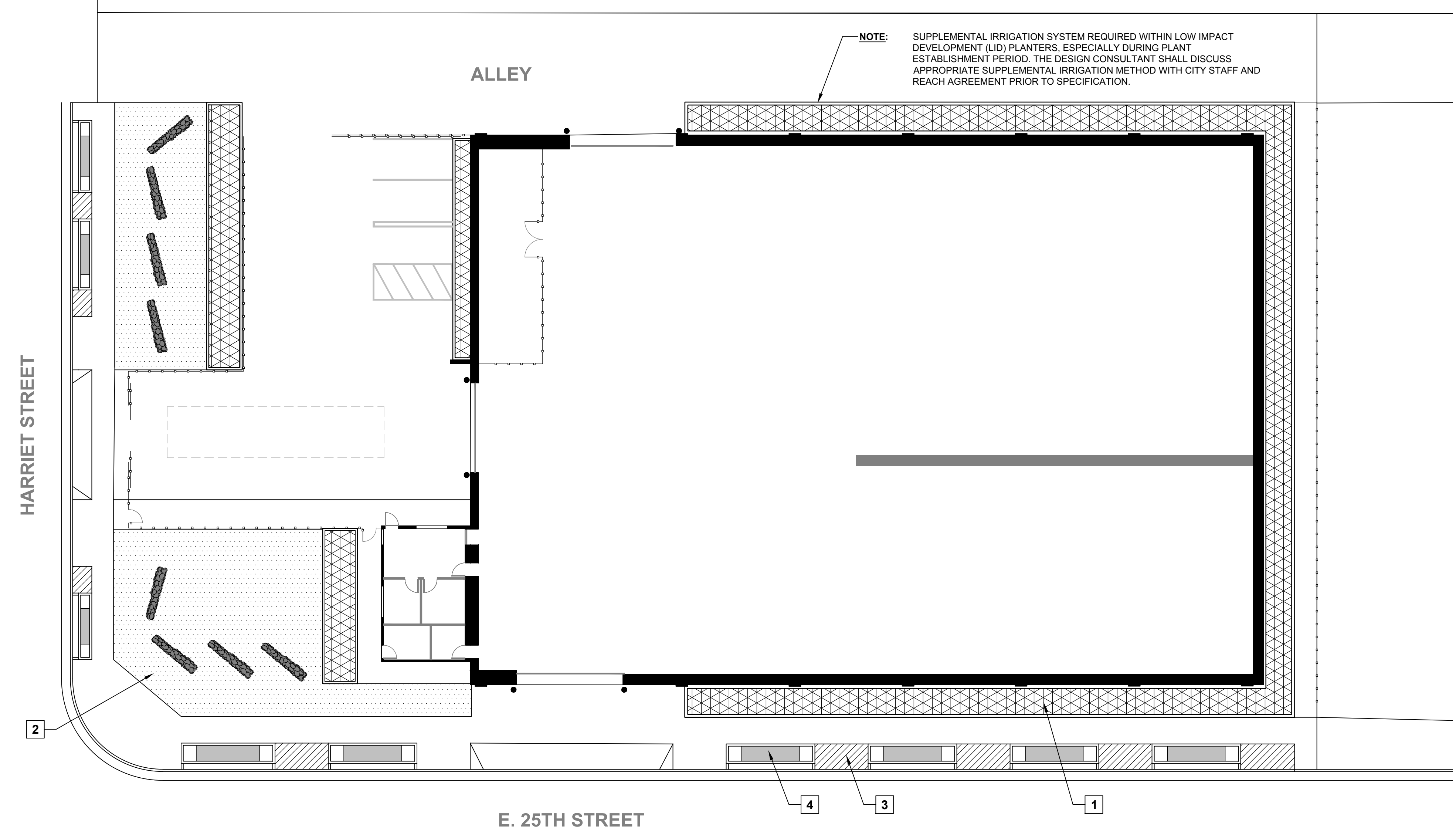
Professional Engineer Seal: Richard W. Fisher, No. 3060, State of California, License No. 50323, Exp. 12-22.

**BUREAU OF ENGINEERING**  
VERTICAL CONTROL  
HORIZONTAL CONTROL  
SHEET TITLE: CONCEPTUAL LANDSCAPE CONSTRUCTION PLAN  
PROJECT: ASPHALT PLANT #1 - PHASE 2  
ADDRESS: 2801 E. 25TH STREET, LOS ANGELES, CA 90058

**DEPARTMENT OF PUBLIC WORKS**  
NO. REVISIONS: [Table with 2 columns: NO., REVISIONS]  
DATE: [Table with 2 columns: DATE, BY:]  
CIP NO. [Table with 2 columns: CIP NO., INDEX NO.]

**CITY OF LOS ANGELES**  
GARY LEE MOORE, P.E., ENV SP  
ARCHITECTURAL DIVISION  
LANDSCAPE ARCH: RICHARD FISHER, LANDSCAPE ARCHITECT I  
DESIGNED BY: JOSHUA LINK, LANDSCAPE ARCH. ASSOCIATE II  
DRAWN BY: JOSHUA LINK, LANDSCAPE ARCH. ASSOCIATE II  
CHECKED BY: JANE ADRIAN, LANDSCAPE ARCHITECT II  
APPROVED BY: STEVEN FERRE, PRINCIPAL ARCHITECT  
WORK ORDER NO. E1908771  
SHEET NO. L401  
SHEET - OF - SHEETS

THE CITY OF LOS ANGELES OR ITS OFFICERS OR AGENCIES SHALL NOT BE RESPONSIBLE FOR THE ACCURACY OR COMPLETENESS OF ELECTRONIC COPIES OF THIS PLAN SHEET.



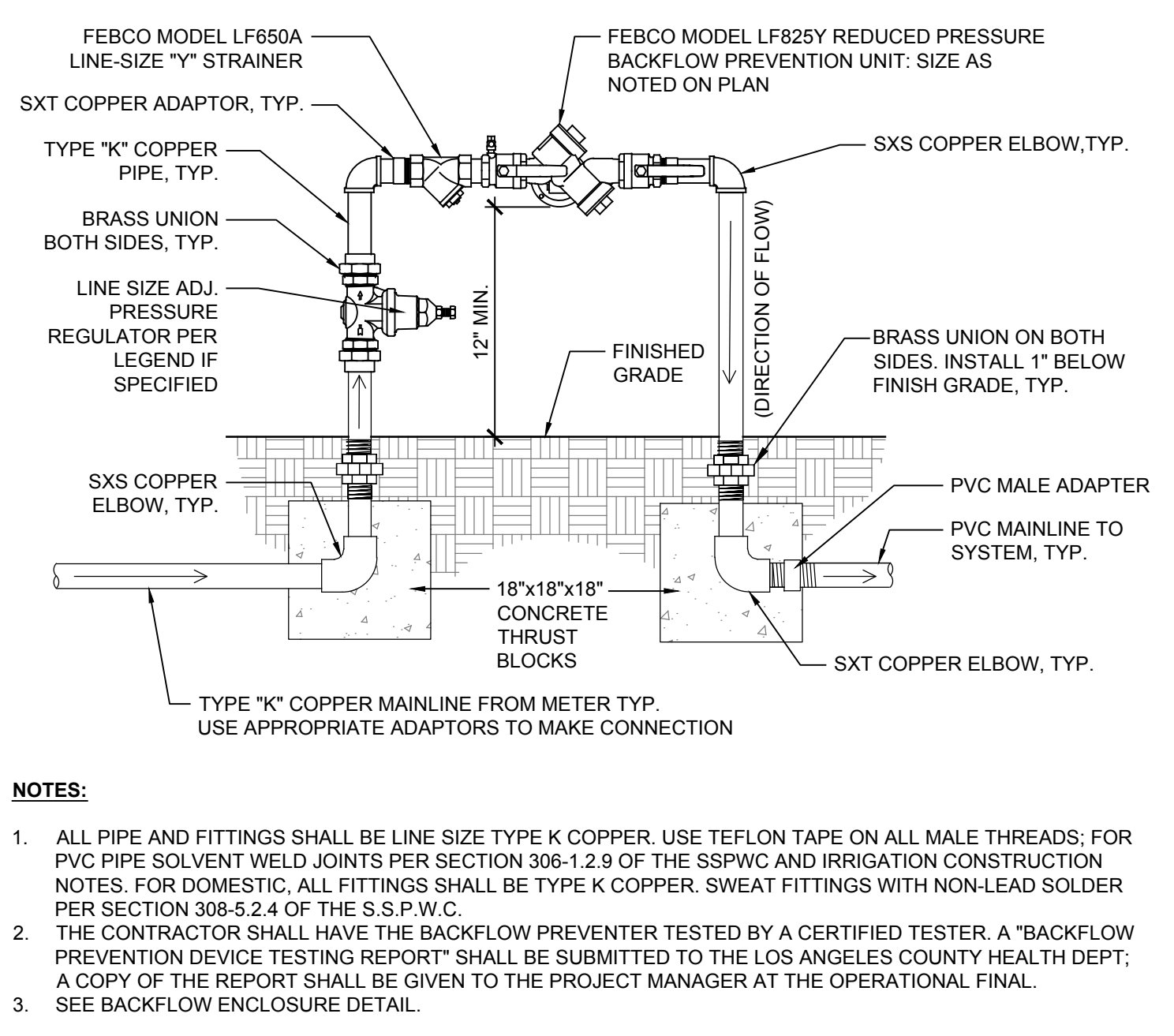
**1** PLANTING PLAN  
L701 SCALE: 1/16"=1'-0"

**IRRIGATION NOTES**

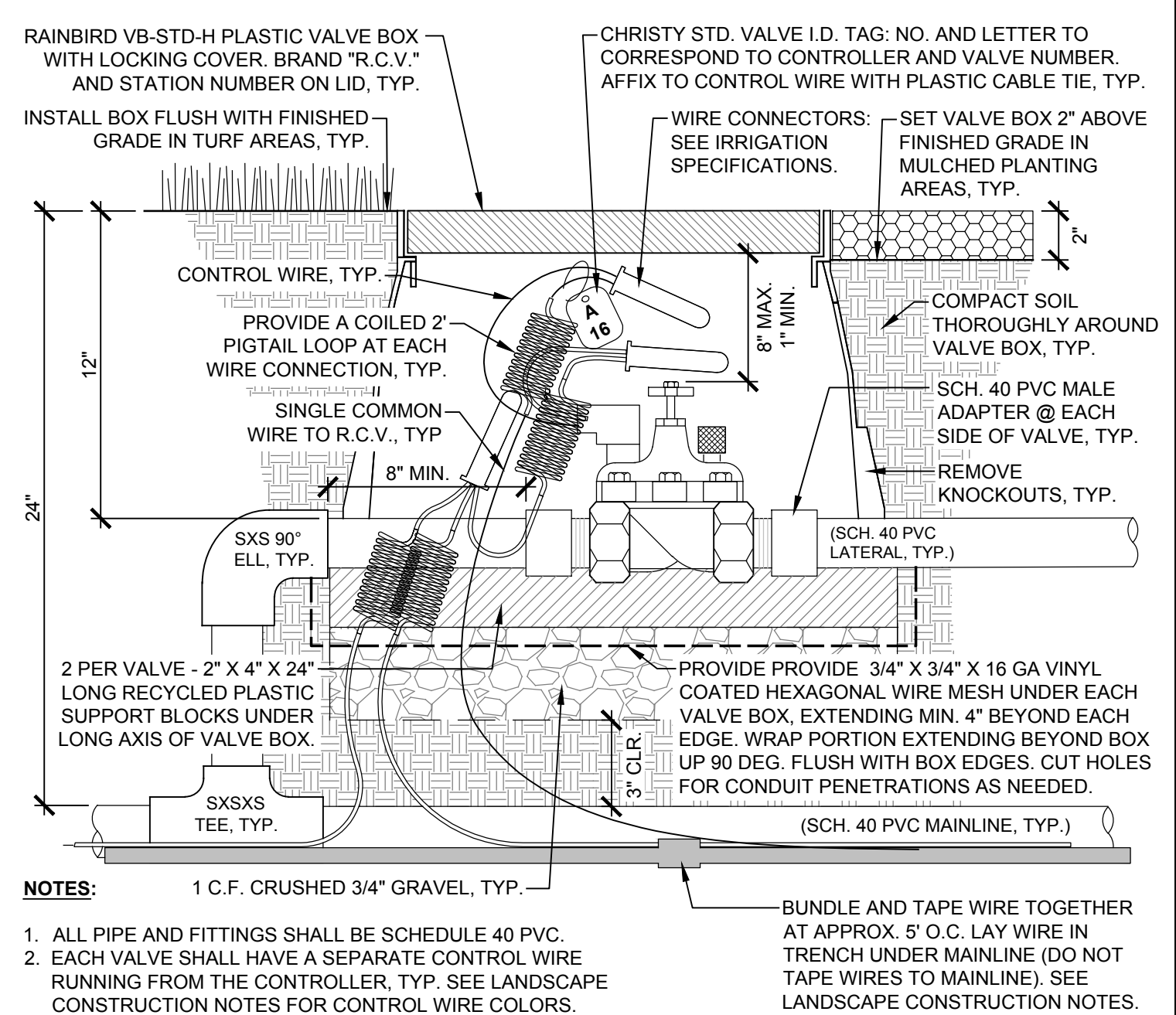
- LANDSCAPE PLANS PROVIDED BY THE CITY ARE CONCEPTUAL. THE DESIGN CONSULTANT SHALL PROVIDE A COMPLETE IRRIGATION SYSTEM DESIGN FOR REVIEW AND APPROVAL BY CITY STAFF.
- THE DESIGN CONSULTANT SHALL MEET ALL APPLICABLE CODE AND ORDINANCE REQUIREMENTS AND SHALL PROVIDE ALL REQUIRED SUBMITTALS FOR PLAN CHECK APPROVAL.
- REFER TO IRRIGATION DETAIL FILES PROVIDED BY THE CITY. THE DESIGN CONSULTANT SHALL USE THE CITY-PROVIDED IRRIGATION DETAILS WHERE APPLICABLE. SOME DETAIL MODIFICATIONS MAY BE NECESSARY TO ACCOUNT FOR UNIQUE PROJECT CONDITIONS. THE DESIGN CONSULTANT SHALL SUBMIT TO CITY STAFF FOR REVIEW AND APPROVAL ALL DETAIL MODIFICATIONS AND/OR NEW DETAILS THAT THE DESIGN CONSULTANT DETERMINES TO BE REQUIRED.
- REFER TO IRRIGATION SPECIFICATION FILES PROVIDED BY THE CITY. THE DESIGN CONSULTANT SHALL USE THE CITY-PROVIDED SPECIFICATIONS WHERE APPLICABLE. SOME SPECIFICATION MODIFICATIONS MAY BE NECESSARY TO ACCOUNT FOR UNIQUE PROJECT CONDITIONS. THE DESIGN CONSULTANT SHALL SUBMIT TO CITY STAFF FOR REVIEW AND APPROVAL ALL SPECIFICATION MODIFICATIONS AND/OR NEW SPECIFICATIONS THAT THE DESIGN CONSULTANT DETERMINES TO BE REQUIRED.

**IRRIGATION LEGEND**

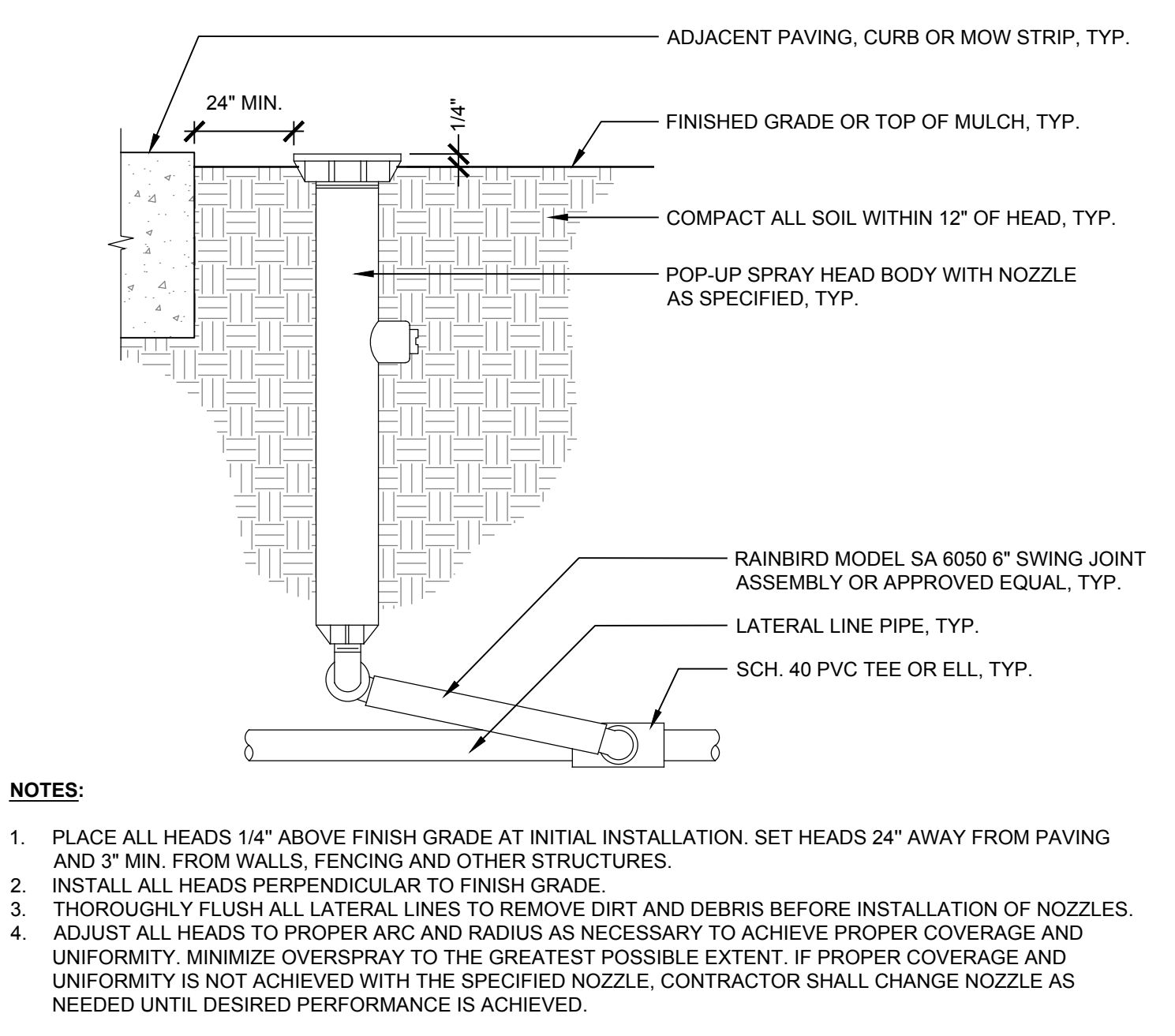
KEYNOTE	SYMBOL	DESCRIPTION	DETAIL	QUANTITY*
1	[Symbol]	ABT PERMAVOID STORMWATER STORAGE CELLS / CAPILLARY IRRIGATION SYSTEM (OR EQUAL)	SEE MANUFACTURER WEBSITE FOR DETAILS AND SPECIFICATIONS	3,140 S.F.
2	[Symbol]	HUNTER PRO SPRAY PRS40 SPRAY BODIES WITH ROTATING MULTI-STREAM MP ROTATOR NOZZLES (OR EQUAL)	A9/L601	3,385 S.F.
3	[Symbol]	RAIN BIRD ROOT WATERING SYSTEM WITH BUBBLER (OR EQUAL)	A13/L601	425 S.F.
4	[Symbol]	IRRIGATION METHOD WITHIN PARKWAY STORMWATER PLANTERS TO BE DETERMINED	N/A	325 S.F.



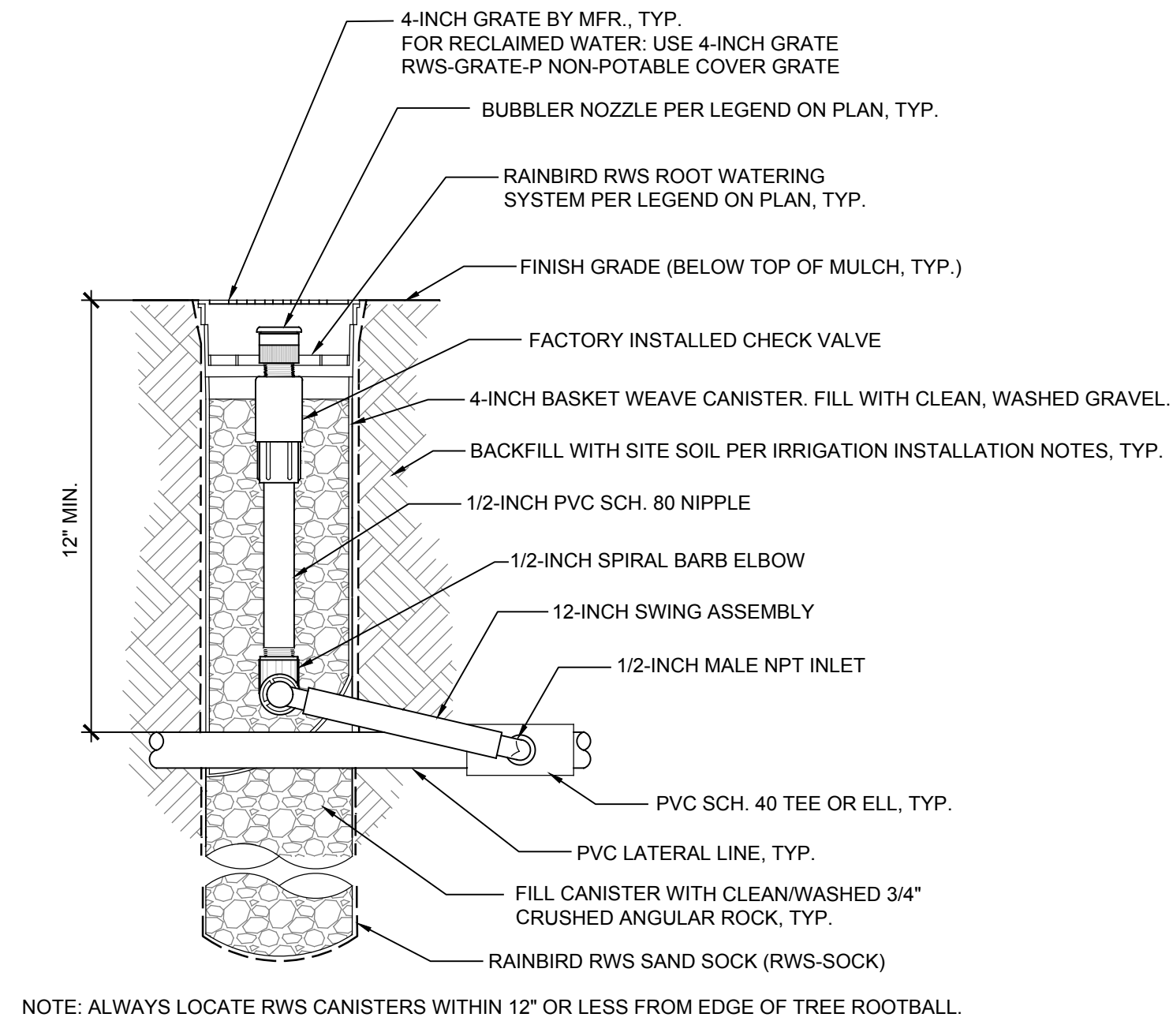
**A1** BACKFLOW PREVENTION UNIT  
N.T.S.



**A5** REMOTE CONTROL VALVE  
N.T.S.



**A9** POP-UP SPRAY HEAD  
N.T.S.



**A13** ROOT WATERING SYSTEM WITH BUBBLER  
N.T.S.

**ENGINEERING**  
CITY OF LOS ANGELES

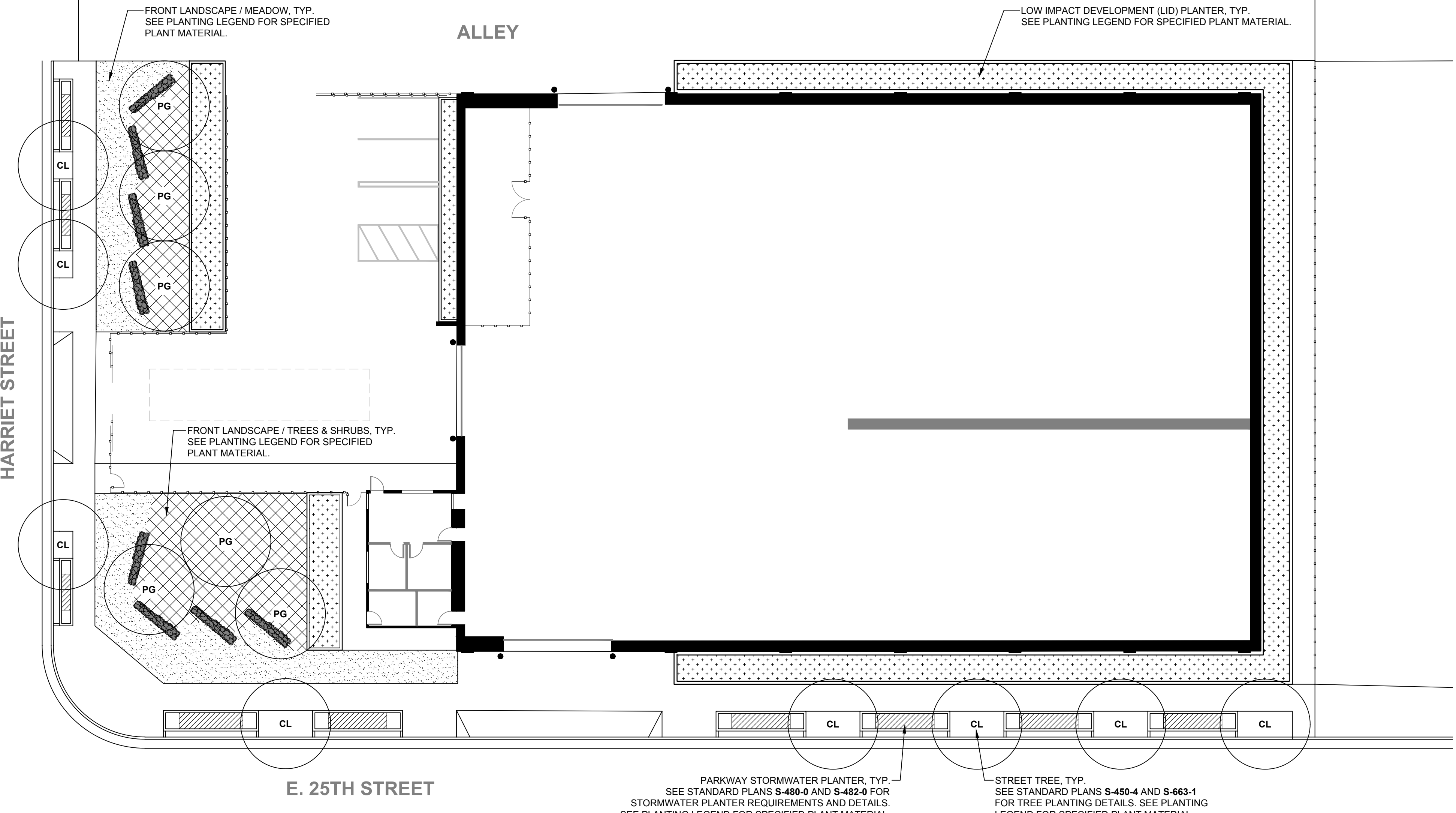
**LANDSCAPE ARCHITECT**  
STATE OF CALIFORNIA  
No. 3060  
09-30-23  
08-15-22  
D.H.

**BUREAU OF ENGINEERING**  
VERTICAL CONTROL: \_\_\_\_\_  
HORIZONTAL CONTROL: \_\_\_\_\_  
SHEET TITLE: CONCEPTUAL IRRIGATION PLAN  
PROJECT: ASPHALT PLANT #1 - PHASE 2  
ADDRESS: 2801 E. 25TH STREET, LOS ANGELES, CA 90058

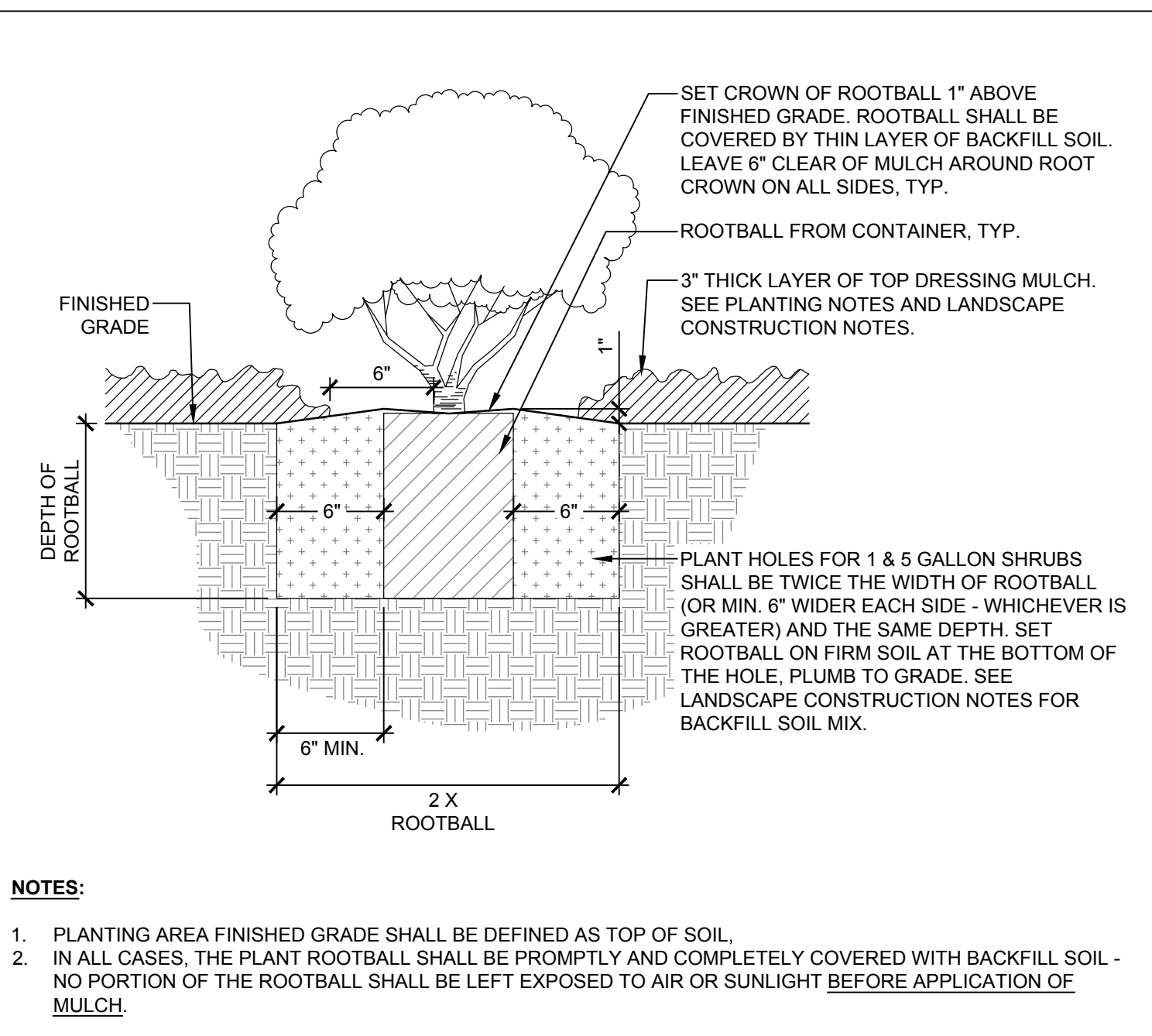
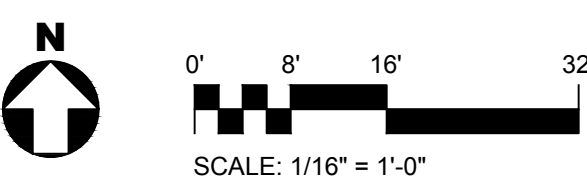
**DEPARTMENT OF PUBLIC WORKS**  
NO. \_\_\_\_\_ DATE: \_\_\_\_/\_\_\_\_/\_\_\_\_  
BY: \_\_\_\_\_  
REVISIONS: \_\_\_\_\_  
CIP NO. \_\_\_\_\_  
INDEX NO. \_\_\_\_\_

**CITY OF LOS ANGELES**  
CITY ENGINEER: GARY LEE MOORE, P.E., ENV SP  
ARCHITECTURAL DIVISION  
DATE: 06-16-22  
LANDSCAPE ARCH: RICHARD FISHER, LANDSCAPE ARCHITECT II  
DESIGNED BY: JOSHUA LINK, LANDSCAPE ARCH. ASSOCIATE II  
DRAWN BY: JOSHUA LINK, LANDSCAPE ARCH. ASSOCIATE II  
CHECKED BY: JANE ADRIAN, LANDSCAPE ARCHITECT II  
APPROVED BY: STEVEN FERRE, PRINCIPAL ARCHITECT

WORK ORDER NO. **E1908771**  
SHEET NO. **L601**  
SHEET - OF - SHEETS



**1**  
L701  
**PLANTING PLAN**  
SCALE: 1/16"=1'-0"



A1	SHRUB PLANTING
N.T.S.	

PLANTING AREA INFORMATION*	
PLANTING AREA DESCRIPTION	SQUARE FOOTAGE
STREET TREE WELLS	425
PARKWAY STORMWATER PLANTERS	325
FRONT LANDSCAPE / MEADOW	1,635
FRONT LANDSCAPE / TREES & SHRUBS	1,750
LOW IMPACT DEVELOPMENT (LID) PLANTERS	3,140
<b>TOTAL PLANTING AREA</b>	<b>7,450</b>

\* PLANTING AREA INFORMATION IS PROVIDED FOR THE CONVENIENCE OF THE CONTRACTOR ONLY. THE CONTRACTOR SHALL BE RESPONSIBLE FOR VERIFYING PLANTING AREA DIMENSIONS FOR THE PURPOSES OF BIDDING AND CONSTRUCTION OF THE PROJECT.

APPLICABLE STANDARD PLANS*	
STANDARD PLAN NUMBER	DESCRIPTION
S-450-4	TREE WELL SIZE AND COVER DETAILS
S-480-0	GREEN STREETS - GENERAL REQUIREMENTS
S-482-0	PARKWAY SWALE IN LOCAL / COLLECTOR STREETS
S-663-1	TREE STAKING AND GUYING DETAILS

\* APPLICABLE STANDARD PLAN PDF FILES ARE INCLUDED IN DRAWING PACKAGE. STANDARD PLAN FILES ARE ALSO AVAILABLE ONLINE AT [HTTPS://ENG2.LACITY.ORG/TECHDOCS/STDPLANS/S-400.HTM](https://eng2.lacity.org/techdocs/stdplans/s-400.htm).

**PLANTING NOTES**

- LANDSCAPE PLANS PROVIDED BY THE CITY ARE CONCEPTUAL. THE DESIGN CONSULTANT SHALL PROVIDE A COMPLETE PLANTING DESIGN FOR REVIEW AND APPROVAL BY CITY STAFF.
- THE DESIGN CONSULTANT SHALL MEET ALL APPLICABLE CODE AND ORDINANCE REQUIREMENTS AND SHALL PROVIDE ALL REQUIRED SUBMITTALS FOR PLAN CHECK APPROVAL.
- REFER TO PLANTING DETAIL FILES PROVIDED BY THE CITY. THE DESIGN CONSULTANT SHALL USE THE CITY-PROVIDED PLANTING DETAILS WHERE APPLICABLE. SOME DETAIL MODIFICATIONS MAY BE NECESSARY TO ACCOUNT FOR UNIQUE PROJECT CONDITIONS. THE DESIGN CONSULTANT SHALL SUBMIT TO CITY STAFF FOR REVIEW AND APPROVAL ALL DETAIL MODIFICATIONS AND/OR NEW DETAILS THAT THE DESIGN CONSULTANT DETERMINES TO BE REQUIRED.
- REFER TO PLANTING SPECIFICATION FILES PROVIDED BY THE CITY. THE DESIGN CONSULTANT SHALL USE THE CITY-PROVIDED SPECIFICATIONS WHERE APPLICABLE. SOME SPECIFICATION MODIFICATIONS MAY BE NECESSARY TO ACCOUNT FOR UNIQUE PROJECT CONDITIONS. THE DESIGN CONSULTANT SHALL SUBMIT TO CITY STAFF FOR REVIEW AND APPROVAL ALL SPECIFICATION MODIFICATIONS AND/OR NEW SPECIFICATIONS THAT THE DESIGN CONSULTANT DETERMINES TO BE REQUIRED.
- REFER TO STANDARD PLAN FILES PROVIDED BY THE CITY. ADDITIONAL STANDARD PLAN FILES ARE AVAILABLE ONLINE AT [HTTPS://ENG2.LACITY.ORG/TECHDOCS/STDPLANS/S-400.HTM](https://eng2.lacity.org/techdocs/stdplans/s-400.htm). THE DESIGN CONSULTANT SHALL USE STANDARD PLANS, AS APPROPRIATE, FOR ALL APPLICABLE WORK.

**PLANTING LEGEND**

STREET TREES		
SYMBOL	BOTANICAL NAME	COMMON NAME
CL	CHILOPSIS LINEARIS 'ART'S SEEDLESS' (OR OTHER LOW-FRUITING CULTIVAR)	ART'S SEEDLESS DESERT WILLOW

PARKWAY STORMWATER PLANTERS		
SYMBOL	BOTANICAL NAME	COMMON NAME
[Hatched]	ACHILLEA MILLEFOLIUM	COMMON YARROW
[Hatched]	JUNCUS PATENS	COMMON RUSH / CALIFORNIA GREY RUSH
[Hatched]	SPOROBOLUS AIROIDES	ALKALI SACATON

FRONT LANDSCAPE / MEADOW		
SYMBOL	BOTANICAL NAME	COMMON NAME
[Dotted]	ACHILLEA MILLEFOLIUM	COMMON YARROW
[Dotted]	BUCHLOE DACTYLOIDES 'UC VERDE'	UC VERDE BUFFALOGRASS
[Dotted]	PHYLA NODIFLORA	COMMON LIPPIA

FRONT LANDSCAPE / TREES & SHRUBS		
SYMBOL	BOTANICAL NAME	COMMON NAME
PG	PROSOPIS GLANDULOSA 'MAVERICK' (NATURAL FORM)	MAVERICK HONEY MESQUITE
[Cross-hatched]	AGAVE PARRYI VAR. TRUNCATA	ARTICHOKE AGAVE
[Cross-hatched]	ARTEMISIA CALIFORNICA 'MONTARA'	MONTARA CALIFORNIA SAGEBRUSH
[Cross-hatched]	BACCHARIS PILULARIS 'POZO SURF'	POZO SURF COYOTE BRUSH
[Cross-hatched]	BAHIOPSIS (VIGUIERA) LACINIATA	SAN DIEGO SUNFLOWER
[Cross-hatched]	ERIOGONUM FASCICULATUM 'WARRINER LYTLE'	WARRINER LYTLE CALIFORNIA BUCKWHEAT
[Cross-hatched]	OPUNTIA LITTORALIS	COAST PRICKLY PEAR

LOW IMPACT DEVELOPMENT (LID) PLANTERS		
SYMBOL	BOTANICAL NAME	COMMON NAME
[Dotted]	ACHILLEA MILLEFOLIUM	COMMON YARROW
[Dotted]	ARTEMISIA DOUGLASIANA	MUGWORT
[Dotted]	CAREX PRAEGRACILIS	CLUSTERED FIELD SEDGE
[Dotted]	ELYMUS CONDENSATUS 'CANYON PRINCE'	CANYON PRINCE WILD RYE
[Dotted]	ELYMUS TRITICOIDES	CREeping WILD RYE
[Dotted]	GRINDELIA STRICTA	COASTAL GUMWEED
[Dotted]	HELIOTROPIUM CURASSAVICUM	SEASIDE HELIOTROPE
[Dotted]	IVA HAYESIANA	MARSH ELDER / POVERTY WEED
[Dotted]	JUNCUS PATENS	COMMON RUSH / CALIFORNIA GREY RUSH
[Dotted]	SALVIA MICROPHYLLA x HEATWAVE 'BREEZE'	HEATWAVE BREEZE SAGE
[Dotted]	SOLIDAGO VELUTINA SSP. CALIFORNICA	CALIFORNIA GOLDENROD
[Dotted]	SPOROBOLUS AIROIDES	ALKALI SACATON
[Dotted]	STACHYS BULLATA	CALIFORNIA HEDGENETTLE
[Dotted]	SYMPHORICARPOS MOLLIS	CREeping SNOWBERRY
[Dotted]	SYMPHOROTRICHUM CHILENSE	CALIFORNIA ASTER
[Dotted]	THALICTRUM FENDLERI	MEADOW RUE
[Dotted]	VERBENA LASIOSTACHYS	COMMON VERVAIN
[Dotted]	VERBENA LILACINA 'DE LA MINA'	DE LA MINA LILAC VERBENA

ENGINEERING  
CITY OF LOS ANGELES

THIS DRAWING IS PROFESSIONALLY  
SIGNED AND STAMPED

**BUREAU OF ENGINEERING**

VERTICAL CONTROL  
HORIZONTAL CONTROL

SHEET TITLE: CONCEPTUAL PLANTING PLAN  
PROJECT: ASPHALT PLANT #1 - PHASE 2  
ADDRESS: 2801 E. 25TH STREET, LOS ANGELES, CA 90058

**DEPARTMENT OF PUBLIC WORKS**

NO. REVISIONS: [Table with 2 columns: No., Revisions]

DATE: [Table with 2 columns: Date, By]

CIP NO. [Table with 2 columns: CIP No., Index No.]

**CITY OF LOS ANGELES**

CITY ENGINEER: GARY LEE MOORE, P.E., ENV SP  
ARCHITECTURAL DIVISION

DATE: 06-16-22

LANDSCAPE ARCH: RICHARD FISHER, LANDSCAPE ARCHITECT I  
DESIGNED BY: JOSHUA LINK, LANDSCAPE ARCH. ASSOCIATE II  
DRAWN BY: JOSHUA LINK, LANDSCAPE ARCH. ASSOCIATE II  
CHECKED BY: JANE ADRIAN, LANDSCAPE ARCHITECT II  
APPROVED BY: STEVEN FERRE, PRINCIPAL ARCHITECT

WORK ORDER NO. E1908771

SHEET NO. **L701**

SHEET - OF - SHEETS