

# Bishop Little League

Bishop, CA

## Lighting System

Pole / Fixture Summary						
Pole ID	Pole Height	Mtg Height	Fixture Qty	Luminaire Type	Load	Circuit
A1-A2	60'	60'	1	TLC-LED-1200	1.17 kW	A
		60'	3	TLC-LED-900	2.64 kW	A
		16'	1	TLC-BT-575	0.58 kW	A
A3-A4	60'	60'	1	TLC-LED-1200	1.17 kW	B
		60'	2	TLC-LED-900	1.76 kW	B
		16'	1	TLC-BT-575	0.58 kW	B
A5-A6	70'	70'	4	TLC-LED-1200	4.68 kW	C
		16'	1	TLC-BT-575	0.58 kW	C
B1	80'	80'	2	TLC-LED-1200	2.34 kW	A
		80'	3	TLC-LED-1500	4.23 kW	A
		16'	2	TLC-BT-575	1.15 kW	A
B2	80'	80'	1	TLC-LED-1200	1.17 kW	A
		80'	2	TLC-LED-1500	2.82 kW	A
		80'	3	TLC-LED-900	2.64 kW	A
		16'	2	TLC-BT-575	1.15 kW	A
		70'	2	TLC-LED-1200	2.34 kW	B
B3-B4	70'	70'	3	TLC-LED-900	2.64 kW	B
		16'	1	TLC-BT-575	0.58 kW	B
		80'	2	TLC-LED-1200	2.34 kW	C
B5-B6	80'	80'	4	TLC-LED-1500	5.64 kW	C
		16'	1	TLC-BT-575	0.58 kW	C
		70'	3	TLC-LED-1200	3.51 kW	C
C1-C2	70'	70'	2	TLC-LED-1500	2.82 kW	C
		16'	2	TLC-BT-575	1.15 kW	C
		<b>14</b>	<b>83</b>	<b>84.97 kW</b>		

Circuit Summary			
Circuit	Description	Load	Fixture Qty
A	Field 2	24.27 kW	25
B	Field 3	18.12 kW	20
C	Field 4	42.58 kW	38

Fixture Type Summary							
Type	Source	Wattage	Lumens	L90	L80	L70	Quantity
TLC-LED-1200	LED 5700K - 75 CRI	1170W	150,000	>120,000	>120,000	>120,000	29
TLC-LED-900	LED 5700K - 75 CRI	880W	104,000	>120,000	>120,000	>120,000	19
TLC-BT-575	LED 5700K - 75 CRI	575W	52,000	>120,000	>120,000	>120,000	18
TLC-LED-1500	LED 5700K - 75 CRI	1410W	181,000	>120,000	>120,000	>120,000	17

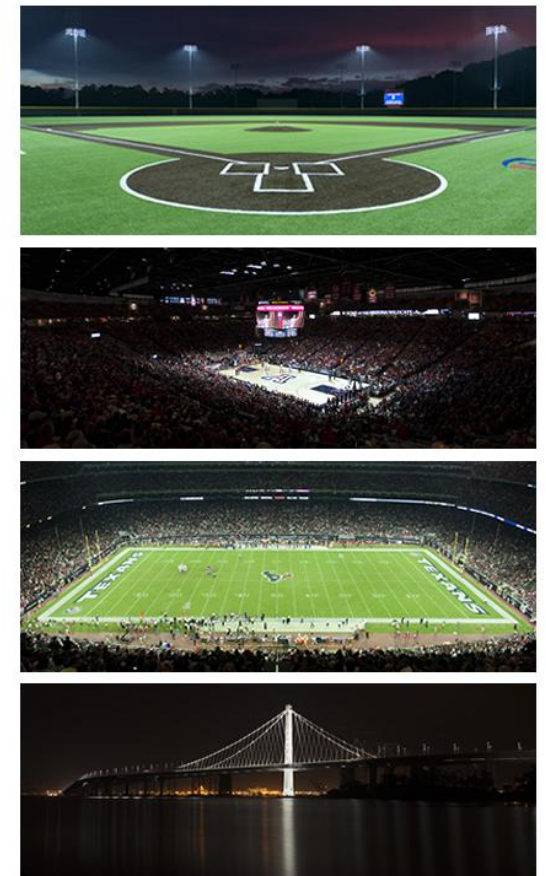
Single Luminaire Amperage Draw Chart								
Driver (.90 min power factor)	Max Line Amperage Per Luminaire							
	208 (60)	220 (60)	240 (60)	277 (60)	347 (60)	380 (60)	480 (60)	
Single Phase Voltage	208 (60)	220 (60)	240 (60)	277 (60)	347 (60)	380 (60)	480 (60)	
TLC-LED-1200	6.9	6.5	6.0	5.2	4.2	3.8	3.0	
TLC-LED-900	5.2	4.9	4.5	3.9	3.1	2.9	2.3	
TLC-BT-575	3.4	3.2	2.9	2.5	2.0	1.8	1.5	
TLC-LED-1500	8.4	7.9	7.3	6.3	5.0	4.6	3.6	

## Light Level Summary

Calculation Grid Summary								
Grid Name	Calculation Metric	Illumination					Circuits	Fixture Qty
		Ave	Min	Max	Max/Min	Ave/Min		
Field 2 (Infield)	Horizontal Illuminance	51.9	37	65	1.78	1.40	A	25
Field 2 (Outfield)	Horizontal Illuminance	30.2	21	49	2.34	1.44	A	25
Field 3 (Infield)	Horizontal Illuminance	51.4	40	60	1.48	1.28	B	20
Field 3 (Outfield)	Horizontal Illuminance	31.9	21	48	2.26	1.52	B	20
Field 4 (Infield)	Horizontal Illuminance	51.8	45	58	1.29	1.15	C	38
Field 4 (Outfield)	Horizontal Illuminance	32.4	21	46	2.14	1.54	C	38

ENGINEERED DESIGN By: Aaron Rose · File #160104A · 27-Sep-23

## From Hometown to Professional



**We Make It Happen.**

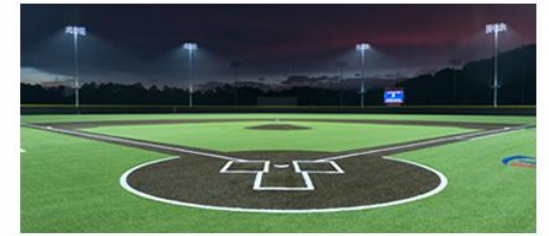
Not to be reproduced in whole or part without the written consent of Musco Sports Lighting, LLC. ©1981, 2023 Musco Sports Lighting, LLC.

# Bishop Little League

Bishop, CA

Calculation Grid Summary								
Grid Name	Calculation Metric	Illumination					Circuits	Fixture Qty
		Ave	Min	Max	Max/Min	Ave/Min		
Hanley & Yaney Ave	Horizontal	0.04	0	0.70	0.00		A,B,C	83
Hanley & Yaney Ave	Max Candela (by Fixture)	1147	0	9263	0.00		A,B,C	83
Hanley & Yaney Ave	Max Vertical Illuminance Metric	0.07	0	0.87	0.00		A,B,C	83

## From Hometown to Professional



**We Make It Happen®**

Not to be reproduced in whole or part without the written consent of Musco Sports Lighting, LLC. ©1981, 2023 Musco Sports Lighting, LLC.

EQUIPMENT LIST FOR AREAS SHOWN							
Pole				Luminaires			
QTY	LOCATION	SIZE	GRADE ELEVATION	MOUNTING HEIGHT	LUMINAIRE TYPE	QTY / POLE	THIS GRID
2	A1-A2	60'	-	60'	TLC-LED-1200	1	1
				15.5'	TLC-BT-575	1	1
				60'	TLC-LED-900	3	3
1	B1	80'	-	80'	TLC-LED-1200	2	2
				15.5'	TLC-BT-575	2	2
				80'	TLC-LED-1500	3	3
1	B2	80'	-	80'	TLC-LED-1500	2	2
				80'	TLC-LED-1200	1	1
				15.5'	TLC-BT-575	2	2
				80'	TLC-LED-900	3	3
4	TOTALS					25	25

## Bishop Little League

Bishop, CA

GRID SUMMARY	
Name:	Field 2
Size:	Irregular 230' / 248' / 229'
Spacing:	20.0' x 20.0'
Height:	3.0' above grade

ILLUMINATION SUMMARY		
MAINTAINED HORIZONTAL FOOTCANDLES		
	Infield	Outfield
<b>Guaranteed Average:</b>	<b>50</b>	<b>30</b>
Scan Average:	51.93	30.22
Maximum:	65	49
Minimum:	37	21
Avg / Min:	1.42	1.45
<b>Guaranteed Max / Min:</b>	<b>2</b>	<b>2.5</b>
Max / Min:	1.78	2.34
UG (adjacent pts):	1.23	1.33
CU:	0.65	
No. of Points:	25	104

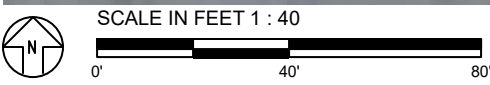
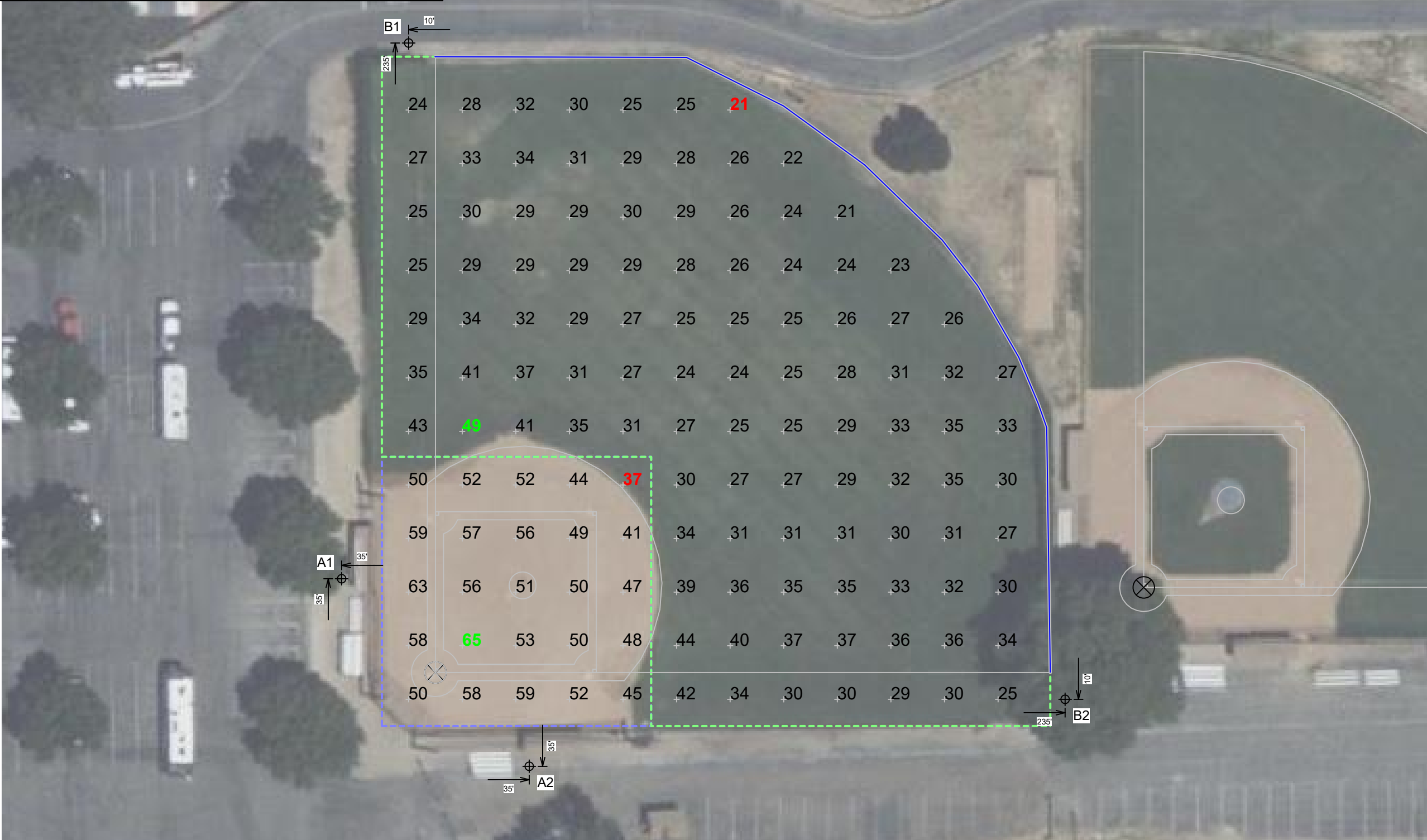
LUMINAIRE INFORMATION	
Applied Circuits:	A
<b>No. of Luminaires:</b>	<b>25</b>
Total Load:	24.27 kW

**Guaranteed Performance:** The ILLUMINATION described above is guaranteed per your Musco Warranty document and includes a 0.95 dirt depreciation factor.

**Field Measurements:** Individual field measurements may vary from computer-calculated predictions and should be taken in accordance with IESNA RP-6-15.

**Electrical System Requirements:** Refer to Amperage Draw Chart and/or the "Musco Control System Summary" for electrical sizing.

**Installation Requirements:** Results assume ± 3% nominal voltage at line side of the driver and structures located within 3 feet (1m) of design locations.



Pole location(s) Ⓢ dimensions are relative to 0,0 reference point(s) ⊗



**We Make It Happen.**

Not to be reproduced in whole or part without the written consent of Musco Sports Lighting, LLC. ©1981, 2023 Musco Sports Lighting, LLC.

EQUIPMENT LIST FOR AREAS SHOWN								
Pole				Luminaires				
QTY	LOCATION	SIZE	GRADE ELEVATION	MOUNTING HEIGHT	LUMINAIRE TYPE	QTY / POLE	THIS GRID	OTHER GRIDS
2	A3-A4	60'	-	60'	TLC-LED-900	2	2	0
				15.5'	TLC-BT-575	1	1	0
				60'	TLC-LED-1200	1	1	0
1	B3	70'	-	70'	TLC-LED-900	3	3	0
				15.5'	TLC-BT-575	1	1	0
				70'	TLC-LED-1200	2	2	0
1	B4	70'	-	70'	TLC-LED-1200	2	2	0
				15.5'	TLC-BT-575	1	1	0
				70'	TLC-LED-900	3	3	0
4	TOTALS					20	20	0

## Bishop Little League

Bishop, CA

GRID SUMMARY	
Name:	Field 3
Size:	200'/200'/200' - basepath 60'
Spacing:	20.0' x 20.0'
Height:	3.0' above grade

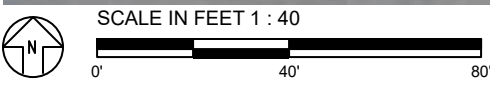
ILLUMINATION SUMMARY		
MAINTAINED HORIZONTAL FOOTCANDLES		
	Infield	Outfield
<b>Guaranteed Average:</b>	<b>50</b>	<b>30</b>
Scan Average:	51.37	31.88
Maximum:	60	48
Minimum:	40	21
Avg / Min:	1.28	1.50
<b>Guaranteed Max / Min:</b>	<b>2</b>	<b>2.5</b>
Max / Min:	1.48	2.26
UG (adjacent pts):	1.24	1.35
CU:	0.67	
No. of Points:	25	71
LUMINAIRE INFORMATION		
Applied Circuits:	B	
No. of Luminaires:	20	
Total Load:	18.12 kW	

**Guaranteed Performance:** The ILLUMINATION described above is guaranteed per your Musco Warranty document and includes a 0.95 dirt depreciation factor.

**Field Measurements:** Individual field measurements may vary from computer-calculated predictions and should be taken in accordance with IESNA RP-6-15.

**Electrical System Requirements:** Refer to Amperage Draw Chart and/or the "Musco Control System Summary" for electrical sizing.

**Installation Requirements:** Results assume ± 3% nominal voltage at line side of the driver and structures located within 3 feet (1m) of design locations.



Pole location(s) ⊕ dimensions are relative to 0,0 reference point(s) ⊗



**We Make It Happen.**

Not to be reproduced in whole or part without the written consent of Musco Sports Lighting, LLC. ©1981, 2023 Musco Sports Lighting, LLC.

EQUIPMENT LIST FOR AREAS SHOWN									
Pole				Luminaires					
QTY	LOCATION	SIZE	GRADE ELEVATION	MOUNTING HEIGHT	LUMINAIRE TYPE	QTY / POLE	THIS GRID	OTHER GRIDS	
2	A5-A6	70'	-	15.5'	TLC-BT-575	1	1	0	
				70'	TLC-LED-1200	4	4	0	
2	B5-B6	80'	-	80'	TLC-LED-1500	4	4	0	
				15.5'	TLC-BT-575	1	1	0	
				80'	TLC-LED-1200	2	2	0	
2	C1-C2	70'	-	70'	TLC-LED-1500	2	2	0	
				15.5'	TLC-BT-575	2	2	0	
				70'	TLC-LED-1200	3	3	0	
6	TOTALS					38	38	0	

## Bishop Little League

Bishop, CA

GRID SUMMARY	
Name:	Field 4
Size:	320'/360'/320' - basepath 80'
Spacing:	20.0' x 20.0'
Height:	3.0' above grade

ILLUMINATION SUMMARY		
MAINTAINED HORIZONTAL FOOTCANDLES		
	Infield	Outfield
<b>Guaranteed Average:</b>	<b>50</b>	<b>30</b>
Scan Average:	51.84	32.39
Maximum:	58	46
Minimum:	45	21
Avg / Min:	1.14	1.51
<b>Guaranteed Max / Min:</b>	<b>2</b>	<b>2.5</b>
Max / Min:	1.29	2.14
UG (adjacent pts):	1.15	1.26
CU:	0.72	
No. of Points:	25	249
LUMINAIRE INFORMATION		
Applied Circuits:	C	
<b>No. of Luminaires:</b>	<b>38</b>	
Total Load:	42.58 kW	



**Guaranteed Performance:** The ILLUMINATION described above is guaranteed per your Musco Warranty document and includes a 0.95 dirt depreciation factor.

**Field Measurements:** Individual field measurements may vary from computer-calculated predictions and should be taken in accordance with IESNA RP-6-15.

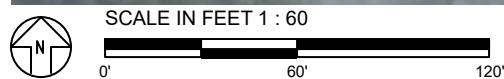
**Electrical System Requirements:** Refer to Amperage Draw Chart and/or the "Musco Control System Summary" for electrical sizing.

**Installation Requirements:** Results assume ± 3% nominal voltage at line side of the driver and structures located within 3 feet (1m) of design locations.



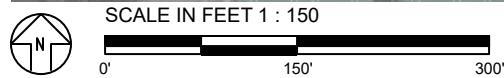
**We Make It Happen.**

Not to be reproduced in whole or part without the written consent of Musco Sports Lighting, LLC. ©1981, 2023 Musco Sports Lighting, LLC.



Pole location(s) ⊕ dimensions are relative to 0,0 reference point(s) ⊗

EQUIPMENT LIST FOR AREAS SHOWN									
Pole			Luminaires						
QTY	LOCATION	SIZE	GRADE ELEVATION	MOUNTING HEIGHT	LUMINAIRE TYPE	QTY / POLE	THIS GRID	OTHER GRIDS	
2	A1-A2	60'	-	60'	TLC-LED-1200	1	1	0	
				15.5'	TLC-BT-575	1	1	0	
				60'	TLC-LED-900	3	3	0	
2	A3-A4	60'	-	60'	TLC-LED-900	2	2	0	
				15.5'	TLC-BT-575	1	1	0	
				60'	TLC-LED-1200	1	1	0	
2	A5-A6	70'	-	15.5'	TLC-BT-575	1	1	0	
				70'	TLC-LED-1200	4	4	0	
				80'	TLC-LED-1200	2	2	0	
1	B1	80'	-	80'	TLC-LED-1200	2	2	0	
				15.5'	TLC-BT-575	2	2	0	
				80'	TLC-LED-1500	3	3	0	
1	B2	80'	-	80'	TLC-LED-1500	2	2	0	
				80'	TLC-LED-1200	1	1	0	
				15.5'	TLC-BT-575	2	2	0	
1	B3	70'	-	70'	TLC-LED-900	3	3	0	
				15.5'	TLC-BT-575	1	1	0	
				70'	TLC-LED-1200	2	2	0	
1	B4	70'	-	70'	TLC-LED-1200	2	2	0	
				15.5'	TLC-BT-575	1	1	0	
				70'	TLC-LED-900	3	3	0	
2	B5-B6	80'	-	80'	TLC-LED-1500	4	4	0	
				15.5'	TLC-BT-575	1	1	0	
				80'	TLC-LED-1200	2	2	0	
2	C1-C2	70'	-	70'	TLC-LED-1500	2	2	0	
				15.5'	TLC-BT-575	2	2	0	
				70'	TLC-LED-1200	3	3	0	
14	TOTALS					83	83	0	



Pole location(s) ⊕ dimensions are relative to 0,0 reference point(s) ⊗

## Bishop Little League

Bishop, CA

GRID SUMMARY	
Name:	Hanley & Yaney Ave
Spacing:	30.0'
Height:	3.0' above grade

ILLUMINATION SUMMARY	
HORIZONTAL FOOTCANDLES	
Scan Average:	Entire Grid 0.0431
Maximum:	0.70
Minimum:	0.00
No. of Points:	143
LUMINAIRE INFORMATION	
Applied Circuits:	A, B, C
No. of Luminaires:	83
Total Load:	84.97 kW

**Guaranteed Performance:** The ILLUMINATION described above is guaranteed per your Musco Warranty document.

**Field Measurements:** Individual field measurements may vary from computer-calculated predictions and should be taken in accordance with IESNA RP-6-15.

**Electrical System Requirements:** Refer to Amperage Draw Chart and/or the "Musco Control System Summary" for electrical sizing.

**Installation Requirements:** Results assume ± 3% nominal voltage at line side of the driver and structures located within 3 feet (1m) of design locations.



**We Make It Happen.**

Not to be reproduced in whole or part without the written consent of Musco Sports Lighting, LLC. ©1981, 2023 Musco Sports Lighting, LLC.

EQUIPMENT LIST FOR AREAS SHOWN									
Pole				Luminaires					
QTY	LOCATION	SIZE	GRADE ELEVATION	MOUNTING HEIGHT	LUMINAIRE TYPE	QTY / POLE	THIS GRID	OTHER GRIDS	
2	A1-A2	60'	-	60'	TLC-LED-1200	1	1	0	
				15.5'	TLC-BT-575	1	1	0	
				60'	TLC-LED-900	3	3	0	
2	A3-A4	60'	-	60'	TLC-LED-900	2	2	0	
				15.5'	TLC-BT-575	1	1	0	
				60'	TLC-LED-1200	1	1	0	
2	A5-A6	70'	-	15.5'	TLC-BT-575	1	1	0	
				70'	TLC-LED-1200	4	4	0	
				80'	TLC-LED-1200	2	2	0	
1	B1	80'	-	80'	TLC-LED-1200	2	2	0	
				15.5'	TLC-BT-575	2	2	0	
				80'	TLC-LED-1500	3	3	0	
1	B2	80'	-	80'	TLC-LED-1500	2	2	0	
				80'	TLC-LED-1200	1	1	0	
				15.5'	TLC-BT-575	2	2	0	
1	B3	70'	-	70'	TLC-LED-900	3	3	0	
				15.5'	TLC-BT-575	1	1	0	
				70'	TLC-LED-1200	2	2	0	
1	B4	70'	-	70'	TLC-LED-1200	2	2	0	
				15.5'	TLC-BT-575	1	1	0	
				70'	TLC-LED-900	3	3	0	
2	B5-B6	80'	-	80'	TLC-LED-1500	4	4	0	
				15.5'	TLC-BT-575	1	1	0	
				80'	TLC-LED-1200	2	2	0	
2	C1-C2	70'	-	70'	TLC-LED-1500	2	2	0	
				15.5'	TLC-BT-575	2	2	0	
				70'	TLC-LED-1200	3	3	0	
14	TOTALS					83	83	0	



## Bishop Little League

Bishop, CA

### GRID SUMMARY

Name: Hanley & Yaney Ave  
 Spacing: 30.0'  
 Height: 3.0' above grade

### ILLUMINATION SUMMARY

MAX VERTICAL FOOTCANDLES  
 Entire Grid  
 Scan Average: 0.0684  
 Maximum: 0.87  
 Minimum: 0.00  
 No. of Points: 143

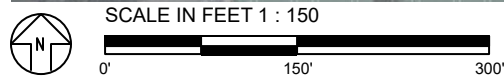
LUMINAIRE INFORMATION  
 Applied Circuits: A, B, C  
 No. of Luminaires: 83  
 Total Load: 84.97 kW

**Guaranteed Performance:** The ILLUMINATION described above is guaranteed per your Musco Warranty document.

**Field Measurements:** Individual field measurements may vary from computer-calculated predictions and should be taken in accordance with IESNA RP-6-15.

**Electrical System Requirements:** Refer to Amperage Draw Chart and/or the "Musco Control System Summary" for electrical sizing.

**Installation Requirements:** Results assume ± 3% nominal voltage at line side of the driver and structures located within 3 feet (1m) of design locations.



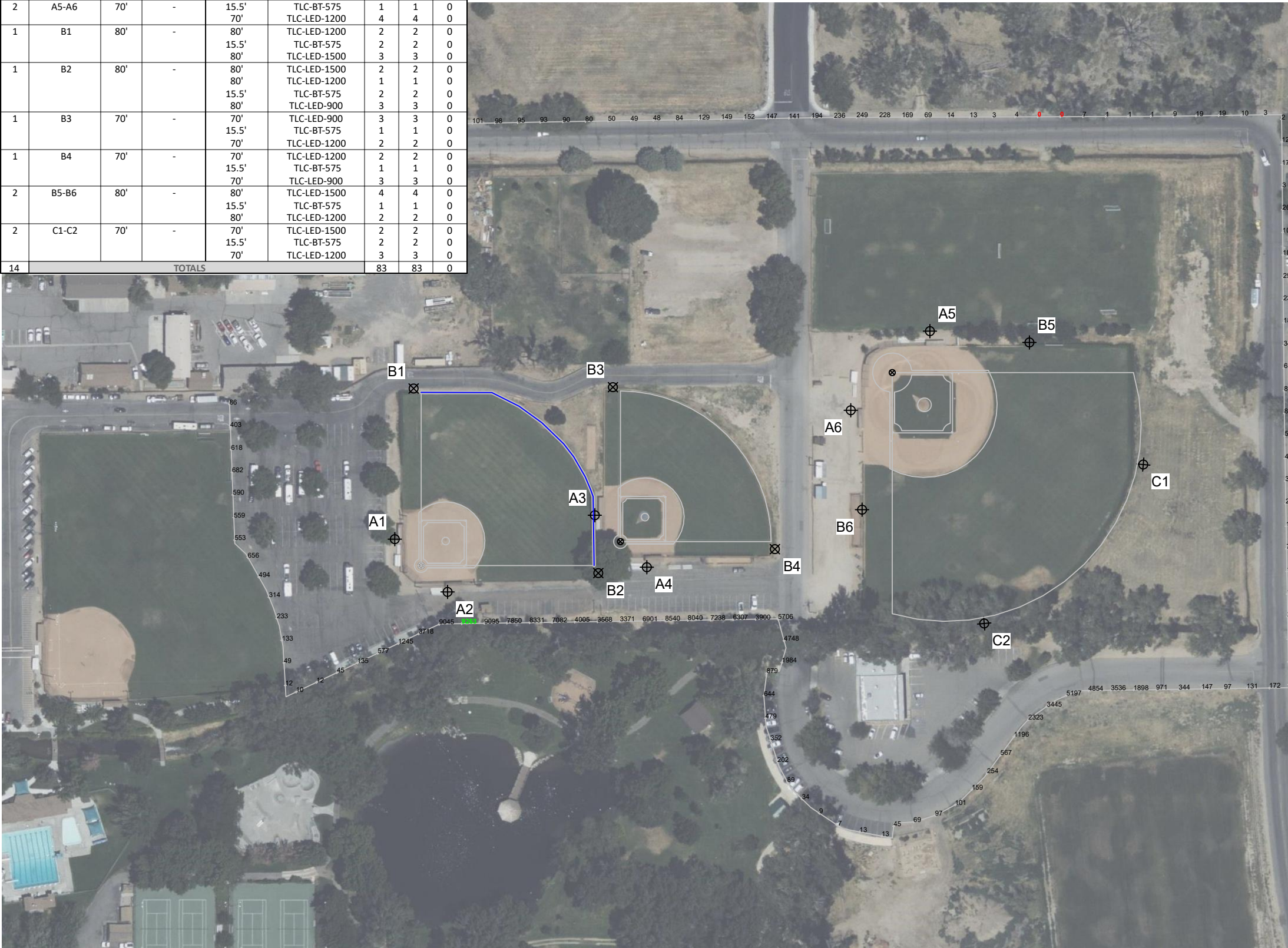
Pole location(s) ⊕ dimensions are relative to 0,0 reference point(s) ⊗



**We Make It Happen.**

Not to be reproduced in whole or part without the written consent of Musco Sports Lighting, LLC. ©1981, 2023 Musco Sports Lighting, LLC.

EQUIPMENT LIST FOR AREAS SHOWN									
Pole			Luminaires						
QTY	LOCATION	SIZE	GRADE ELEVATION	MOUNTING HEIGHT	LUMINAIRE TYPE	QTY / POLE	THIS GRID	OTHER GRIDS	
2	A1-A2	60'	-	60'	TLC-LED-1200	1	1	0	
				15.5'	TLC-BT-575	1	1	0	
				60'	TLC-LED-900	3	3	0	
2	A3-A4	60'	-	60'	TLC-LED-900	2	2	0	
				15.5'	TLC-BT-575	1	1	0	
				60'	TLC-LED-1200	1	1	0	
2	A5-A6	70'	-	15.5'	TLC-BT-575	1	1	0	
				70'	TLC-LED-1200	4	4	0	
				80'	TLC-LED-1200	2	2	0	
1	B1	80'	-	80'	TLC-LED-1200	2	2	0	
				15.5'	TLC-BT-575	2	2	0	
				80'	TLC-LED-1500	3	3	0	
1	B2	80'	-	80'	TLC-LED-1500	2	2	0	
				80'	TLC-LED-1200	1	1	0	
				15.5'	TLC-BT-575	2	2	0	
1	B3	70'	-	80'	TLC-LED-900	3	3	0	
				15.5'	TLC-BT-575	1	1	0	
				70'	TLC-LED-1200	2	2	0	
1	B4	70'	-	70'	TLC-LED-1200	2	2	0	
				15.5'	TLC-BT-575	1	1	0	
				70'	TLC-LED-900	3	3	0	
2	B5-B6	80'	-	80'	TLC-LED-1500	4	4	0	
				15.5'	TLC-BT-575	1	1	0	
				80'	TLC-LED-1200	2	2	0	
2	C1-C2	70'	-	70'	TLC-LED-1500	2	2	0	
				15.5'	TLC-BT-575	2	2	0	
				70'	TLC-LED-1200	3	3	0	
14	TOTALS					83	83	0	



Pole location(s)  $\oplus$  dimensions are relative to 0,0 reference point(s)  $\otimes$

## Bishop Little League

Bishop, CA

GRID SUMMARY	
Name:	Hanley & Yaney Ave
Spacing:	30.0'
Height:	3.0' above grade

ILLUMINATION SUMMARY	
CANDELA (PER FIXTURE)	
Scan Average:	Entire Grid 1147.4349
Maximum:	9263.22
Minimum:	0.00
No. of Points:	143
LUMINAIRE INFORMATION	
Applied Circuits:	A, B, C
No. of Luminaires:	83
Total Load:	84.97 kW

**Guaranteed Performance:** The ILLUMINATION described above is guaranteed per your Musco Warranty document.

**Field Measurements:** Individual field measurements may vary from computer-calculated predictions and should be taken in accordance with IESNA RP-6-15.

**Electrical System Requirements:** Refer to Amperage Draw Chart and/or the "Musco Control System Summary" for electrical sizing.

**Installation Requirements:** Results assume  $\pm 3\%$  nominal voltage at line side of the driver and structures located within 3 feet (1m) of design locations.



**We Make It Happen.**

Not to be reproduced in whole or part without the written consent of Musco Sports Lighting, LLC. ©1981, 2023 Musco Sports Lighting, LLC.



# Bishop Little League

Bishop, CA

## EQUIPMENT LAYOUT

### INCLUDES:

- Field 2
- Field 3
- Field 4

**Electrical System Requirements:** Refer to Amperage Draw Chart and/or the "Musco Control System Summary" for electrical sizing.

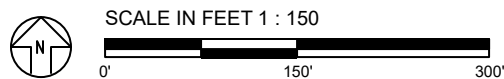
**Installation Requirements:** Results assume ± 3% nominal voltage at line side of the driver and structures located within 3 feet (1m) of design locations.

## EQUIPMENT LIST FOR AREAS SHOWN

QTY	Pole			Luminaires		
	LOCATION	SIZE	GRADE ELEVATION	MOUNTING HEIGHT	LUMINAIRE TYPE	QTY/POLE
2	A1-A2	60'	-	60'	TLC-LED-1200	1
				15.5'	TLC-BT-575	1
				60'	TLC-LED-900	3
2	A3-A4	60'	-	60'	TLC-LED-900	2
				15.5'	TLC-BT-575	1
				60'	TLC-LED-1200	1
2	A5-A6	70'	-	15.5'	TLC-BT-575	1
				70'	TLC-LED-1200	4
				70'	TLC-LED-1500	1
1	B1	80'	-	80'	TLC-LED-1200	2
				80'	TLC-LED-1200	2
				15.5'	TLC-BT-575	2
1	B2	80'	-	80'	TLC-LED-1500	2
				80'	TLC-LED-1200	1
				15.5'	TLC-BT-575	2
1	B3	70'	-	80'	TLC-LED-900	3
				70'	TLC-LED-900	3
				15.5'	TLC-BT-575	1
1	B4	70'	-	70'	TLC-LED-1200	2
				15.5'	TLC-BT-575	1
				70'	TLC-LED-900	3
2	B5-B6	80'	-	80'	TLC-LED-1500	4
				15.5'	TLC-BT-575	1
				80'	TLC-LED-1200	2
2	C1-C2	70'	-	70'	TLC-LED-1500	2
				15.5'	TLC-BT-575	2
				70'	TLC-LED-1200	3
14	TOTALS					83

## SINGLE LUMINAIRE AMPERAGE DRAW CHART

Driver (.90 min power factor)	Line Amperage Per Luminaire (max draw)						
	208 (60)	220 (60)	240 (60)	277 (60)	347 (60)	380 (60)	480 (60)
Single Phase Voltage	6.9	6.5	6.0	5.2	4.2	3.8	3.0
TLC-LED-1200	5.2	4.9	4.5	3.9	3.1	2.9	2.3
TLC-BT-575	3.4	3.2	2.9	2.5	2.0	1.8	1.5
TLC-LED-1500	8.4	7.9	7.3	6.3	5.0	4.6	3.6



ENGINEERED DESIGN By: Aaron Rose · File #160104A · 27-Sep-23

Pole location(s) ⊕ dimensions are relative to 0,0 reference point(s) ⊗



**We Make It Happen.**

Not to be reproduced in whole or part without the written consent of Musco Sports Lighting, LLC. ©1981, 2023 Musco Sports Lighting, LLC.