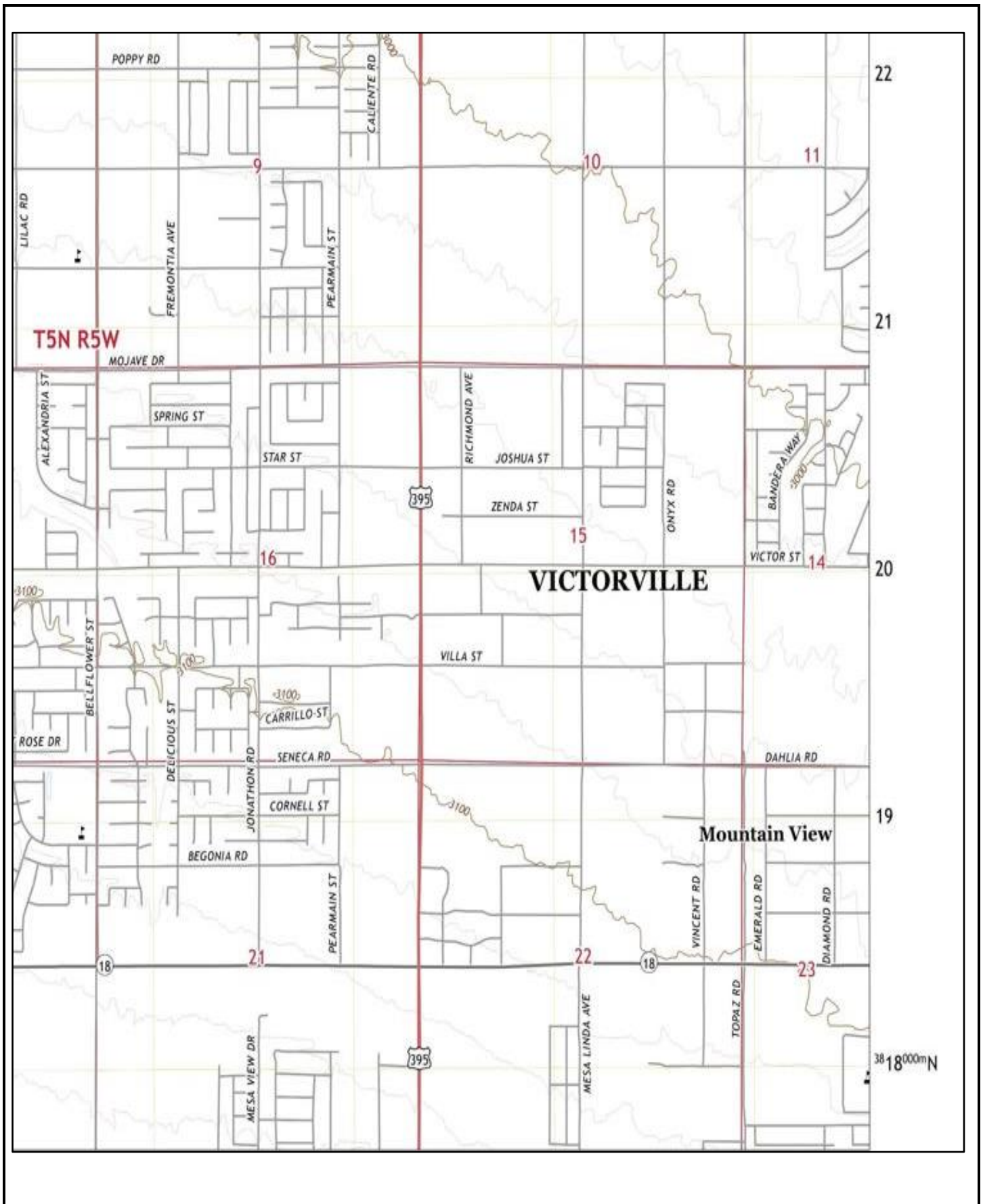


SOURCE: Jacobs, Google Maps

FIGURE 1



SOURCE: Jacobs, USGS 7.5 Minute Topographic "Adelanto" Quadrangle

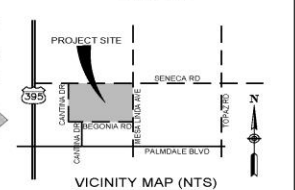
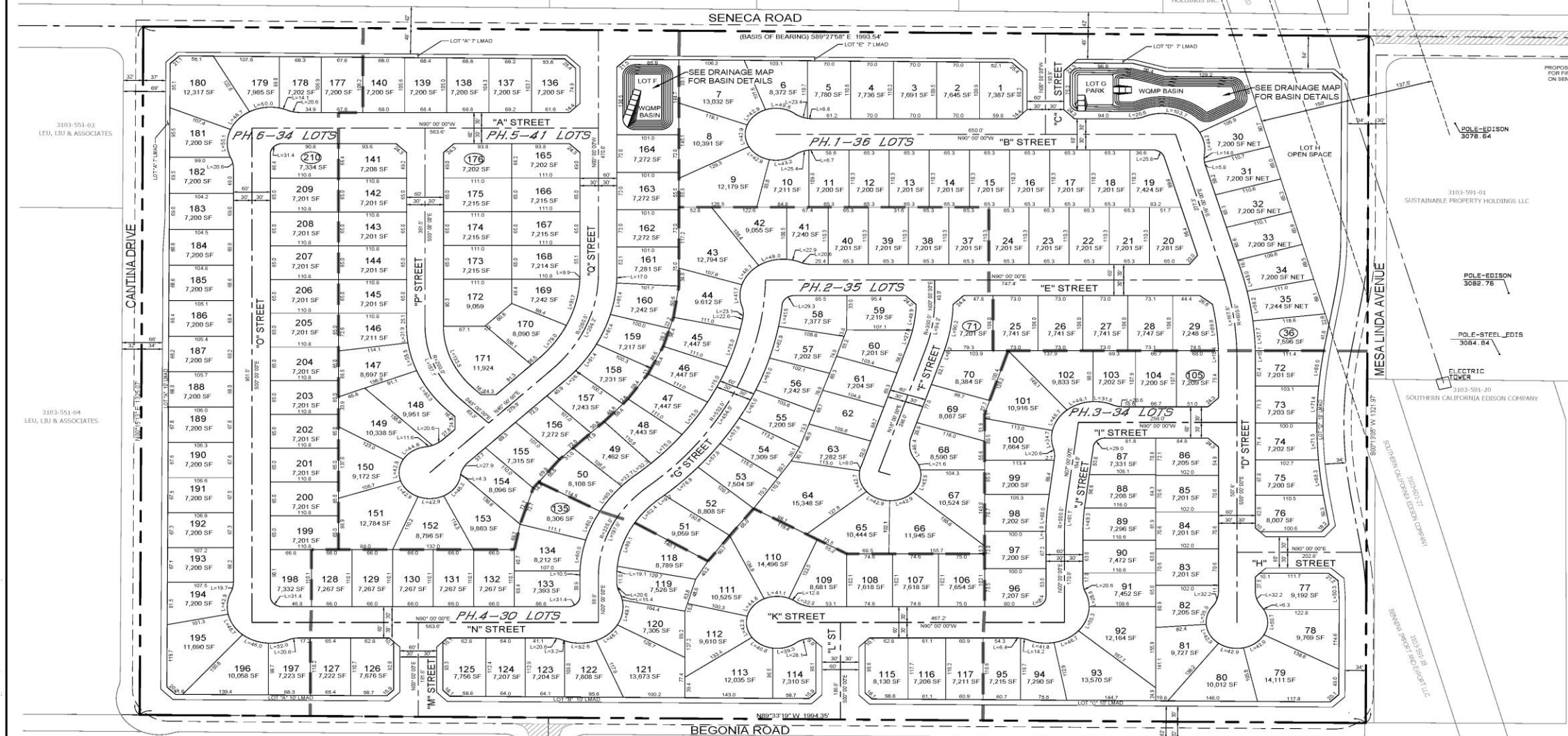
FIGURE 2

IN THE CITY OF VICTORVILLE,
COUNTY OF SAN BERNARDINO, CALIFORNIA
TENTATIVE TRACT MAP
No. 20500

BEING A SUBDIVISION OF PARCEL 4 OF PARCEL MAP NO. 16389, P.M.B. 21830-31, RECORDS OF SAN BERNARDINO COUNTY, STATE OF CALIFORNIA, SITUATED WITHIN THE N 1/4 OF THE N.W 1/4 OF SECTION 22, T.5 N., R.5 W., S.B.M.

LUDWIG ENGINEERING ASSOCIATES, INC.

MARCH 2023



OWNER/DEVELOPER
LEU, LIU AND ASSOCIATES
1803 VIRGINIA ROAD
SAN MARINO, CA 91108
(626) 696-5222

ENGINEER
LUDWIG ENGINEERING ASSOCIATES, INC.
100 E. THIRD STREET
SAN BERNARDINO, CA 92410
(909) 884-8217

ASSESSOR'S PARCEL NO.
APN: 3103-561-05

LEGAL DESCRIPTION
BEING A SUBDIVISION OF PARCEL 4 OF PARCEL MAP NO. 16389, P.M.B. 21830-31, RECORDS OF SAN BERNARDINO COUNTY, STATE OF CALIFORNIA, SITUATED WITHIN THE N 1/4 OF THE N.W 1/4 OF SECTION 22, T.5 N., R.5 W., S.B.M.

ZONING & LAND USE
R-1 (SINGLE-FAMILY RESIDENTIAL)

GENERAL PLAN DESIGNATION
LOW DENSITY RESIDENTIAL

BENCHMARK
CITY OF VICTORVILLE V-217 - LOCATED AT THE INTERSECTION OF PALMDALE ROAD AND HIGHWAY 366 AT THE N.E. CORNER AT THE B.C.R.
ELEV. = 3127.48 (NAD 1929)

SERVICES

ELECTRICITY	SOUTHERN CALIFORNIA EDISON COMPANY 12253 HESPERIA ROAD VICTORVILLE, CA 92392
WATER	VICTORVILLE WATER DISTRICT 14343 CIVIC DRIVE VICTORVILLE, CA 92392
SEWER	CITY OF VICTORVILLE 14343 CIVIC DRIVE VICTORVILLE, CA 92392
GAS	SOUTHWEST GAS COMPANY 14950 CIRCLE DRIVE VICTORVILLE, CA 92392
TELEPHONE	VERIZON 16071 MOJAVE DRIVE VICTORVILLE, CA 92392

AREAS

TOTAL GROSS ACREAGE: APPROX. 60.58 AC
TOTAL NET ACREAGE: APPROX. 39.9 AC
TOTAL NUMBERED LOTS: 210
UNITS PER ACRE GROSS RES.: 3.47
MINIMUM LOT SIZE RES.: 7,200 SF

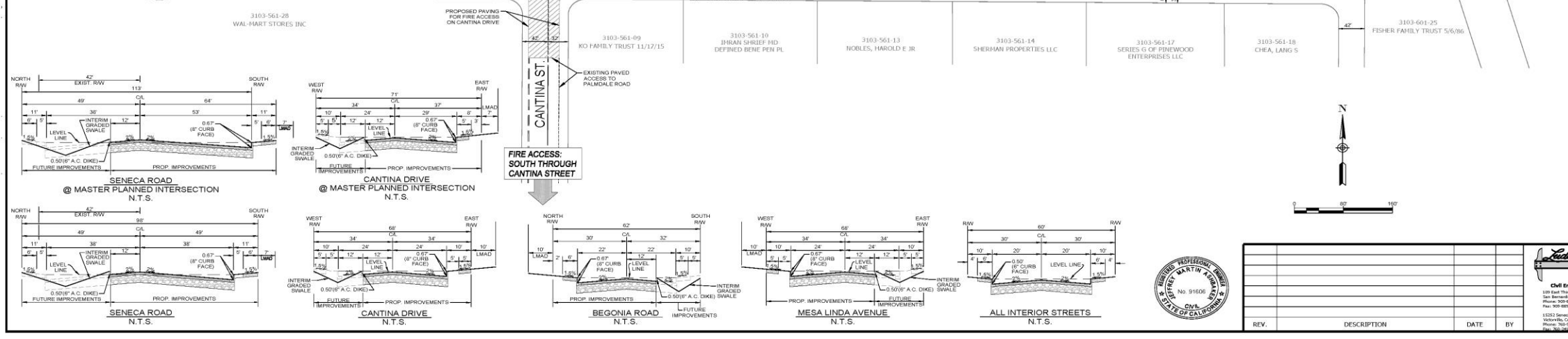
TOTAL LETTERED LOTS: 8 (LOT "A" THROUGH "H" FOR LMD LOTS "N" AND "G" FOR WATER QUALITY BASINS, LOT "H" AS AN OPEN SPACE)

MINIMUM LOT WIDTH = 60'
MINIMUM LOT DEPTH = 100'
MINIMUM LOT WIDTH AT CORNER = 65'
MINIMUM LOT WIDTH AT REVERSE CORNER LOT = 75'

THIS TRACT HAS 6 SUBDIVISION PHASES

NOTES

- THIS TRACT CONTAINS 7,670 L.F. OF NEW STREETS.
- UNLESS OTHERWISE INDICATED PROPOSED SEWERS ARE 8" PVC.
- UNLESS OTHERWISE INDICATED PROPOSED WATER LINES ARE 8" PVC.
- UNLESS OTHERWISE INDICATED THE SURROUNDING LAND USE IS "VACANT".
- CONTOUR SOURCE: LUDWIG ENGINEERING GROUND SURVEY
- DEVELOPMENT OF SITE WILL HAVE MINIMAL EFFECT ON EXISTING DRAINAGE PATTERNS. STORM WATER RUNOFF WILL FOLLOW EXISTING AND NATURAL DRAINAGE COURSES OR BE CARRIED IN PROPOSED STREETS AND DRAINAGE FACILITIES AS INDICATED ON THE MAP AND OUTLINED IN ACCOMPANYING DRAINAGE STUDY.
- EARTHWORK WILL BE BALANCED ON SITE.
- ESTIMATED EARTHWORK QUANTITY: RAW CUT: 118,213 CY - RAW FILL: 44,244 CY
- IMPROVEMENTS ARE PER TYPICAL SUBDIVISION AND ARE TO BE BUILT ACCORDING TO CITY OF VICTORVILLE STANDARDS.
- SETBACKS: 20' - FRONT & REAR
10' - STREET SIDE YARD
5' AND 10' - SIDE YARD
- THIS IS A CALCULATED MAP - LOT CLOSURES ARE AVAILABLE. THE DEVELOPER REQUESTS REVIEW FOR COMPLIANCE WITH CURRENT CODES AND POLICES WITH REGARD TO GEOMETRICS.
- SECONDARY ACCESS TO BE PROVIDED WHERE NECESSARY.
- [Symbol] INDICATES PAD ELEVATION.



LEGEND AND ABBREVIATIONS

[Symbol]	TRACT BOUNDARY	[Symbol]	PROP. ELEVATIONS	[Symbol]	FS FINISHED SURFACE
[Symbol]	EXIST. CONTOURS	[Symbol]	AC PAVING	[Symbol]	FL FLOW LINE
[Symbol]	PROP. WATER	[Symbol]	PROP. OFFSITE	[Symbol]	PE PAD ELEVATION
[Symbol]	PROP. SEWER	[Symbol]	EXIST. GAS	[Symbol]	GB GRADE BREAK
[Symbol]	EXIST. SEWER	[Symbol]	PROP. EP	[Symbol]	HP HIGH POINT
[Symbol]	GAS	[Symbol]	EXIST. EP	[Symbol]	LMAD LOW POINT
[Symbol]	IMAD	[Symbol]	[Symbol]	[Symbol]	SF SQUARE FOOT
[Symbol]	SLOPE (2:1 MAX)	[Symbol]	[Symbol]	[Symbol]	EP EDGE OF PAVEMENT
[Symbol]	INVERT	[Symbol]	[Symbol]	[Symbol]	INV INVERT

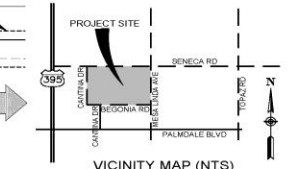
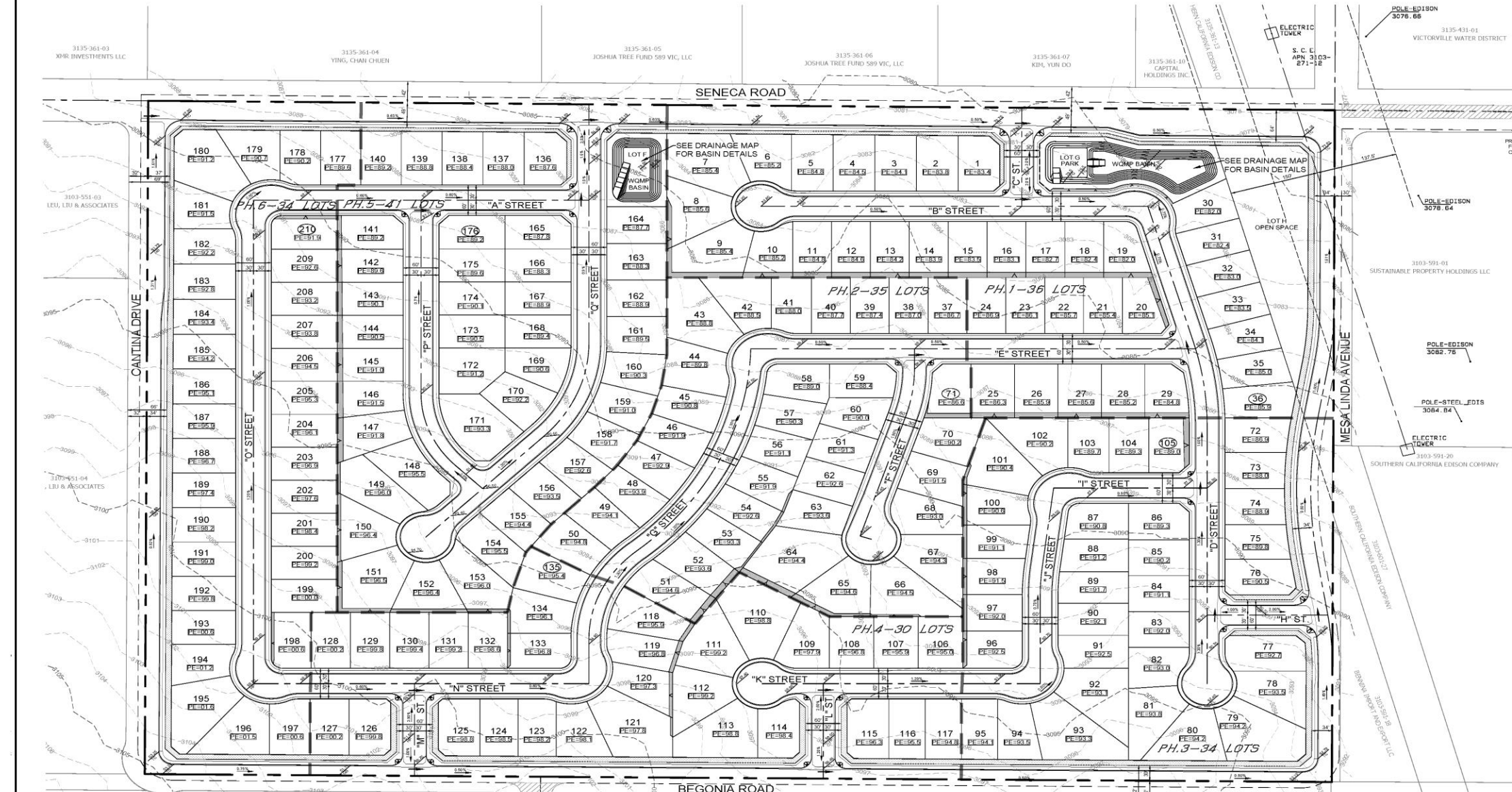
<p>Ludwig Engineering Associates, Inc. Civil Engineering - Surveying - Planning 100 East Third Street San Bernardino, CA 92410 Phone: 909-884-8217</p>				<p>TENTATIVE TRACT NO. 20500 BOUNDARY & LOTTING</p>		<p>SCALE 1"=80' SHEET 5 OF 3</p>	
<p>CLIENT: LEU, LIU AND ASSOCIATES</p>		<p>DESIGNED BY: MTD</p>		<p>DRAWN BY: MTD</p>		<p>CHECKED BY: WBJ</p>	
REV.	DESCRIPTION	DATE	BY				

FIGURE 3a

IN THE CITY OF VICTORVILLE,
 COUNTY OF SAN BERNARDINO, CALIFORNIA
TENTATIVE TRACT MAP
No. 20500

BEING A SUBDIVISION OF PARCEL 4 OF PARCEL MAP NO. 16389, P.M.B. 21830-31, RECORDS OF SAN BERNARDINO COUNTY, STATE OF CALIFORNIA, SITUATED WITHIN THE N. 1/2 OF THE N.W. 1/4 OF SECTION 22, T.5 N., R.5 W., S.B.M.

LUDWIG ENGINEERING ASSOCIATES, INC. MARCH 2023



OWNER/DEVELOPER
 LEU, LIU AND ASSOCIATES
 1803 VIRGINIA ROAD
 SAN MARINO, CA 91108
 (626) 695-5222

ENGINEER
 LUDWIG ENGINEERING ASSOCIATES, INC.
 109 E. THIRD STREET
 SAN BERNARDINO, CA 92410
 (909) 854-6217

ASSESSOR'S PARCEL NO.
 APN: 3103-561-05

LEGAL DESCRIPTION:
 BEING A SUBDIVISION OF PARCEL 4 OF PARCEL MAP NO. 16389, P.M.B. 21830-31, RECORDS OF SAN BERNARDINO COUNTY, STATE OF CALIFORNIA, SITUATED WITHIN THE N. 1/2 OF THE N.W. 1/4 OF SECTION 22, T.5 N., R.5 W., S.B.M.

ZONING & LAND USE
 R-1 (SINGLE-FAMILY RESIDENTIAL)

GENERAL PLAN DESIGNATION
 LOW DENSITY RESIDENTIAL

BENCHMARK
 CITY OF VICTORVILLE V-217 - LOCATED AT THE INTERSECTION OF PALMDALE ROAD AND HIGHWAY 395 AT THE N.E. CORNER AT THE B.C.R.
 ELEV: 13127.48 (N.VAD 1929)

SERVICES

ELECTRICITY SOUTHERN CALIFORNIA EDISON COMPANY
 12353 HESPERIA ROAD
 VICTORVILLE, CA 92392

WATER VICTORVILLE WATER DISTRICT
 1543 CIVIC DRIVE
 VICTORVILLE, CA 92392

SEWER CITY OF VICTORVILLE
 14543 CIVIC DRIVE
 VICTORVILLE, CA 92392

GAS SOUTHWEST GAS COMPANY
 14560 CIRCLE DRIVE
 VICTORVILLE, CA 92392

TELEPHONE VERIZON
 16071 MOJAVE DRIVE
 VICTORVILLE, CA 92392

AREAS

TOTAL GROSS ACRES: APPROX. 60.58 AC
 TOTAL NET ACRES: APPROX. 39.9 AC
 TOTAL NUMBERED LOTS: 210
 UNITS PER ACRE: GROSS RES. 3.47
 MINIMUM LOT SIZE: RES. 7,200 SF

TOTAL LETTERED LOTS: 8 (LOT "A" THROUGH "H" FOR LMD LOTS "I" AND "J" FOR WATER QUALITY BASINS, LOT "K" AS AN OPEN SPACE.)

MINIMUM LOT WIDTH = 60'
 MINIMUM LOT DEPTH = 100'
 MINIMUM LOT WIDTH AT CORNER = 65'
 MINIMUM LOT WIDTH AT REVERSE CORNER LOT = 75'

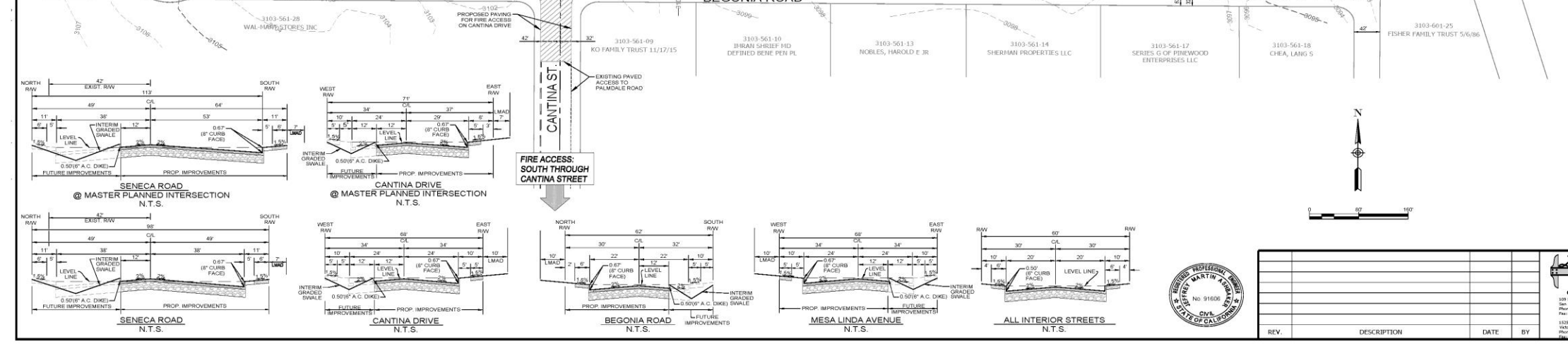
THIS TRACT HAS 6 SUBDIVISION PHASES

NOTES

- THIS TRACT CONTAINS 7,670 L.F. OF NEW STREETS.
- UNLESS OTHERWISE INDICATED PROPOSED SEWERS ARE 8" PVC.
- UNLESS OTHERWISE INDICATED PROPOSED WATER LINES ARE 8" PVC.
- UNLESS OTHERWISE INDICATED THE SURROUNDING LAND USE IS "RACANT".
- CONTOUR SOURCE: LUDWIG ENGINEERING GROUND SURVEY
- DEVELOPMENT OF SITE WILL HAVE MINIMAL EFFECT ON EXISTING DRAINAGE PATTERNS. STORM WATER RUNOFF WILL FOLLOW EXISTING AND NATURAL DRAINAGE COURSES OR BE CARRIED IN PROPOSED STREETS AND DRAINAGE FACILITIES AS INDICATED ON THE MAP AND OUTLINED IN ACCOMPANYING DRAINAGE STUDY.
- EARTHWORK SHALL BE BALANCED ON SITE.
- ESTIMATED EARTHWORK QUANTITY: RAW CUT: 118,213 CY RAW FILL: 44,244 CY
- IMPROVEMENTS ARE PER TYPICAL SUBDIVISION AND ARE TO BE BUILT ACCORDING TO CITY OF VICTORVILLE STANDARDS.
- SETBACKS: 20' - FRONT & REAR
 10' - STREET SIDE YARD
 5' AND 10' - SIDE YARD
- THIS IS A CALCULATED MAP. LOT CLOSURES ARE AVAILABLE. THE DEVELOPER REQUESTS REVIEW FOR COMPLIANCE WITH CURRENT CODES AND POLICIES WITH REGARD TO GEOMETRICS.
- SECONDARY ACCESS TO BE PROVIDED WHERE NECESSARY.
- [Symbol] INDICATES PAD ELEVATION.

LEGEND AND ABBREVIATIONS

[Symbol]	TRACT BOUNDARY	[Symbol]	PROP. ELEVATIONS	[Symbol]	FS FINISHED SURFACE
[Symbol]	EXIST. CONTOURS	[Symbol]	PROP. OFFSITE	[Symbol]	FL FLOW LINE
[Symbol]	PROP. WATER	[Symbol]	AC PAVING	[Symbol]	PE PAD ELEVATION
[Symbol]	PROP. SEWER	[Symbol]	EXIST. SEWER	[Symbol]	GB GRADE BREAK
[Symbol]	EXIST. WATER	[Symbol]	EXIST. GAS	[Symbol]	HP HIGH POINT
[Symbol]	EXIST. SEWER	[Symbol]	PHASE LINES	[Symbol]	LP LOW POINT
[Symbol]	GAS	[Symbol]	PROP. EP	[Symbol]	SF SQUARE FOOT
[Symbol]	EXIST. GAS	[Symbol]	EXIST. EP	[Symbol]	EP EDGE OF PAVEMENT
[Symbol]	PHASE LINES	[Symbol]	SLOPE (2:1 MAX)	[Symbol]	INV INVERT
[Symbol]	PROP. EP	[Symbol]			
[Symbol]	EXIST. EP				



Ludwig Engineering Associates, Inc.
 500 East Third Street, Suite 200, San Bernardino, CA 92410
 Phone: 909-854-6217 Fax: 909-854-6217
 15325 Sierra Ave., Suite 100, Victorville, CA 92392
 Phone: 909-854-6217 Fax: 909-854-6217

TENTATIVE TRACT NO. 20500
PRELIMINARY GRADING

CLIENT: LEU, LIU AND ASSOCIATES

DESIGNED BY: MTD DRAWN BY: MTD CHECKED BY: WJB

SCALE: 1"=80'
 SHEET 2 OF 3

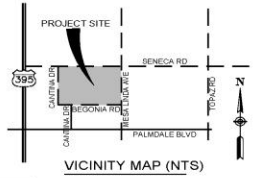
REV. DESCRIPTION DATE BY

PLOT DATE: March 20, 2023

IN THE CITY OF VICTORVILLE,
COUNTY OF SAN BERNARDINO, CALIFORNIA
TENTATIVE TRACT MAP
No. 20500

BEING A SUBDIVISION OF PARCEL 4 OF PARCEL MAP NO. 16389, P.M.B. 21830-31, RECORDS OF SAN BERNARDINO COUNTY, STATE OF CALIFORNIA, SITUATED WITHIN THE N 1/4 OF THE N.W 1/4 OF SECTION 22, T.5 N., R.5 W., S.B.M.

LUDWIG ENGINEERING ASSOCIATES, INC. MARCH 2023



OWNER/DEVELOPER

LEU, LIU AND ASSOCIATES
1803 VIRGINIA ROAD
SAN MARINO, CA 91108
(626) 895-5222

ENGINEER

LUDWIG ENGINEERING ASSOCIATES, INC.
109 E. THIRD STREET
SAN BERNARDINO, CA 92410
(909) 884-8217

ASSESSOR'S PARCEL NO.

APN: 3103-551-05

LEGAL DESCRIPTION

BEING A SUBDIVISION OF PARCEL 4 OF PARCEL MAP NO. 16389, P.M.B. 21830-31, RECORDS OF SAN BERNARDINO COUNTY, STATE OF CALIFORNIA, SITUATED WITHIN THE N 1/4 OF THE N.W 1/4 OF SECTION 22, T.5 N., R.5 W., S.B.M.

ZONING & LAND USE

R-1 (SINGLE-FAMILY RESIDENTIAL)

GENERAL PLAN DESIGNATION

LOW DENSITY RESIDENTIAL

BENCHMARK

CITY OF VICTORVILLE V.317 - LOCATED AT THE INTERSECTION OF PALMDALE ROAD AND HIGHWAY 365 AT THE N.E. CORNER AT THE B.C.R.
ELEV. = 3127.48 (N.VAD 1929)

SERVICES

ELECTRICITY SOUTHERN CALIFORNIA EDISON COMPANY
12353 HESPERIA ROAD
VICTORVILLE, CA 92392

WATER VICTORVILLE WATER DISTRICT
14343 CIVIC DRIVE
VICTORVILLE, CA 92392

SEWER CITY OF VICTORVILLE
14343 CIVIC DRIVE
VICTORVILLE, CA 92392

GAS SOUTHWEST GAS COMPANY
14660 CIRCLE DRIVE
VICTORVILLE, CA 92392

TELEPHONE VERIZON
18071 MOJAVE DRIVE
VICTORVILLE, CA 92392

AREAS

TOTAL GROSS ACREAGE: APPROX. 60.58 AC
TOTAL NET ACREAGE: APPROX. 38.9 AC
TOTAL NUMBERED LOTS: 210
UNITS PER ACRE GROSS RES.: 3.47
MINIMUM LOT SIZE RES.: 7,200 SF

TOTAL LETTERED LOTS: 8 (LOT "A" THROUGH "H" FOR LMAI, LOTS "I" AND "J" FOR WATER QUALITY BASINS, LOT "K" AS AN OPEN SPACE.)

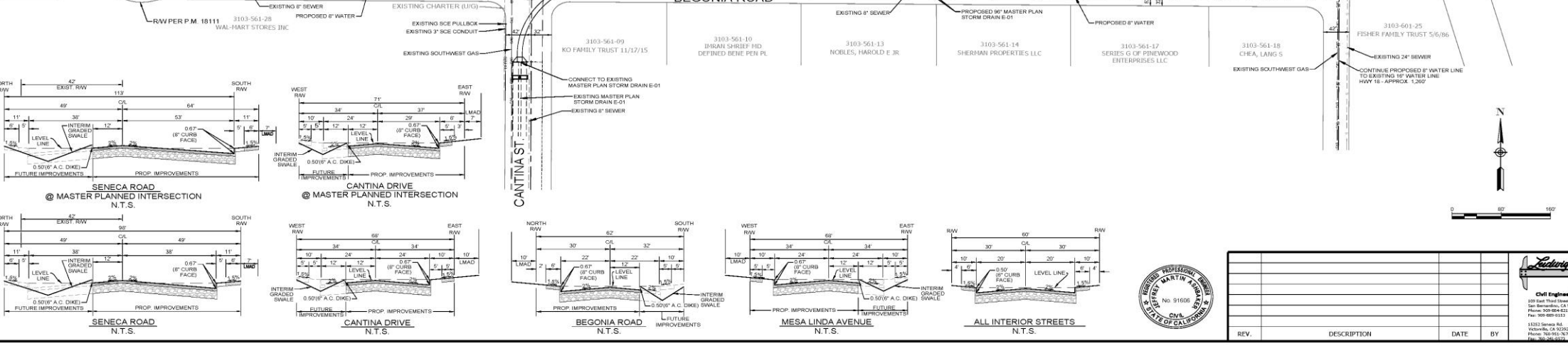
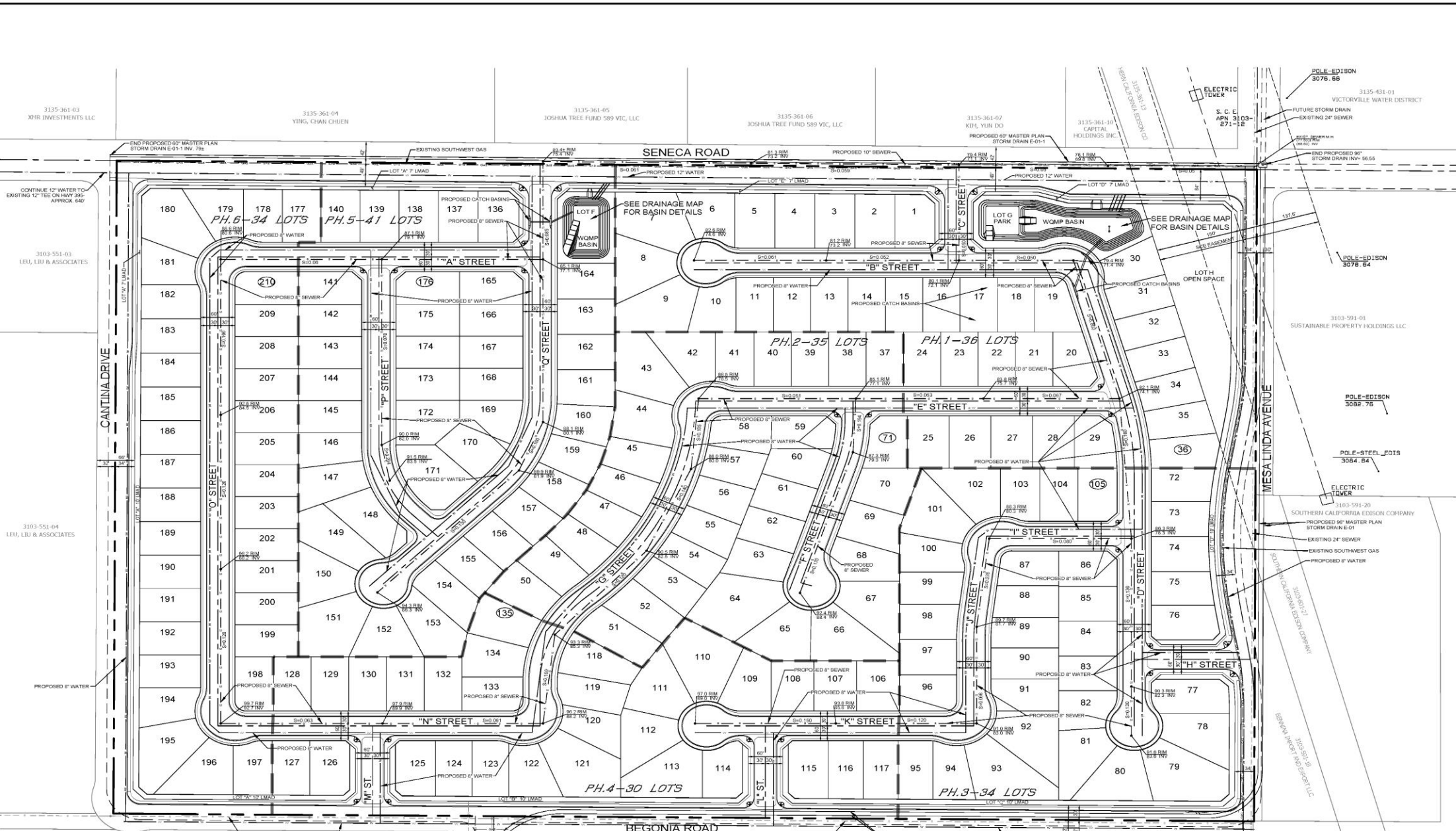
MINIMUM LOT WIDTH = 60'
MINIMUM LOT DEPTH = 100'
MINIMUM LOT WIDTH AT CORNER = 65'
MINIMUM LOT WIDTH AT REVERSE CORNER LOT = 75'

NOTES

- THIS TRACT CONTAINS 7,670 L.F. OF NEW STREETS
- UNLESS OTHERWISE INDICATED PROPOSED SEWERS ARE 8" PVC
- UNLESS OTHERWISE INDICATED PROPOSED WATER LINES ARE 8" PVC
- UNLESS OTHERWISE INDICATED THE SURROUNDING LAND USE IS "VACANT"
- CONTOUR SOURCE: LUDWIG ENGINEERING GROUND SURVEY
- DEVELOPMENT OF SITE WILL HAVE MINIMAL EFFECT ON EXISTING DRAINAGE PATTERNS. STORM WATER RUNOFF WILL FOLLOW EXISTING AND NATURAL DRAINAGE COURSES OR BE CARRIED IN PROPOSED STREETS AND DRAINAGE FACILITIES AS INDICATED ON THE MAP AND OUTLINED IN ACCOMPANYING DRAINAGE STUDY.
- EARTHWORK WILL BE BALANCED ON SITE.
- ESTIMATED EARTHWORK QUANTITY: RAW CUT: 118,213 CY RAW FILL: 44,244 CY
- IMPROVEMENTS ARE PER TYPICAL SUBDIVISION AND ARE TO BE BUILT ACCORDING TO CITY OF VICTORVILLE STANDARDS
- SETBACKS: 20' - FRONT & REAR
10' - STREET SIDE YARD
5' AND 10' - SIDE YARD
- THIS IS A CALCULATED MAP. LOT CLOSURES ARE AVAILABLE. THE DEVELOPER REQUESTS REVIEW FOR COMPLIANCE WITH CURRENT CODES AND POLICIES WITH REGARD TO GEOMETRICS.
- SECONDARY ACCESS TO BE PROVIDED WHERE NECESSARY.
- (XXX) INDICATES PAD ELEVATION.

LEGEND AND ABBREVIATIONS

---	TRACT BOUNDARY	---	PROP. ELEVATIONS	---	FS	FINISHED SURFACE
---	EXIST. CONTOURS	---	PROP. OFFSITE AC PAVING	---	FL	FLOW LINE
---	PROP. WATER	---	---	---	PE	PAD ELEVATION
---	PROP. SEWER	---	---	---	GB	GRADE BREAK
---	EXIST. SEWER	---	---	---	HP	HIGH POINT
---	EXIST. GAS	---	---	---	LP	LOW POINT
---	PHASE LINES	---	---	---	SF	SQUARE FOOT
---	PROP. LP	---	---	---	EP	EDGE OF PAVEMENT
---	EXIST. EP	---	---	---	INV	INVERT



REV.	DESCRIPTION	DATE	BY

Ludwig Engineering Associates, Inc.
Civil Engineering • Surveying • Planning
100 West Third Street, San Bernardino, CA 92401
Phone: 909-884-8217 Fax: 909-884-8217

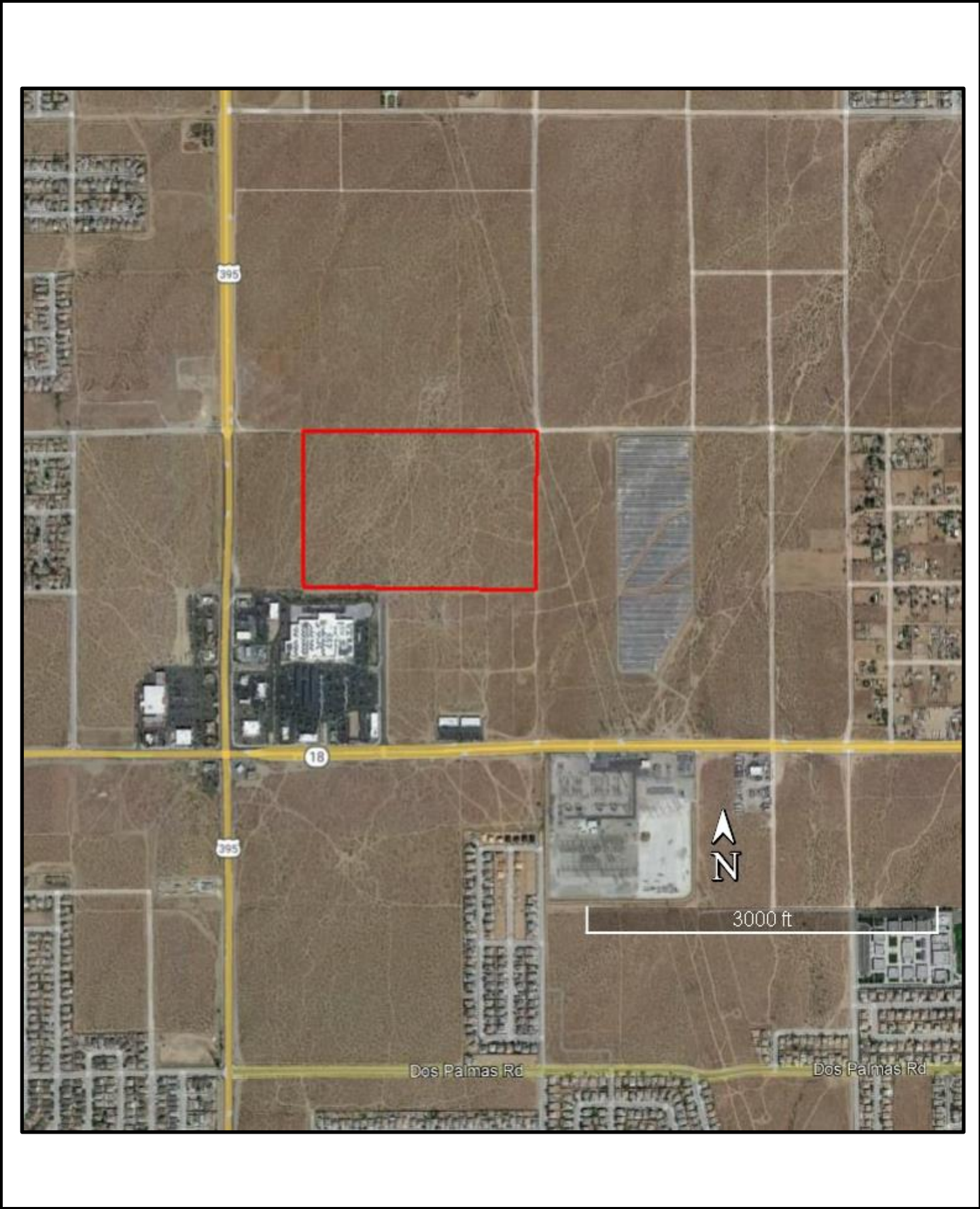
TENTATIVE TRACT NO. 20500 PRELIMINARY UTILITIES

CLIENT: LEU, LIU AND ASSOCIATES

DESIGNED BY: MTD DRAWN BY: MTD CHECKED BY: WBJ

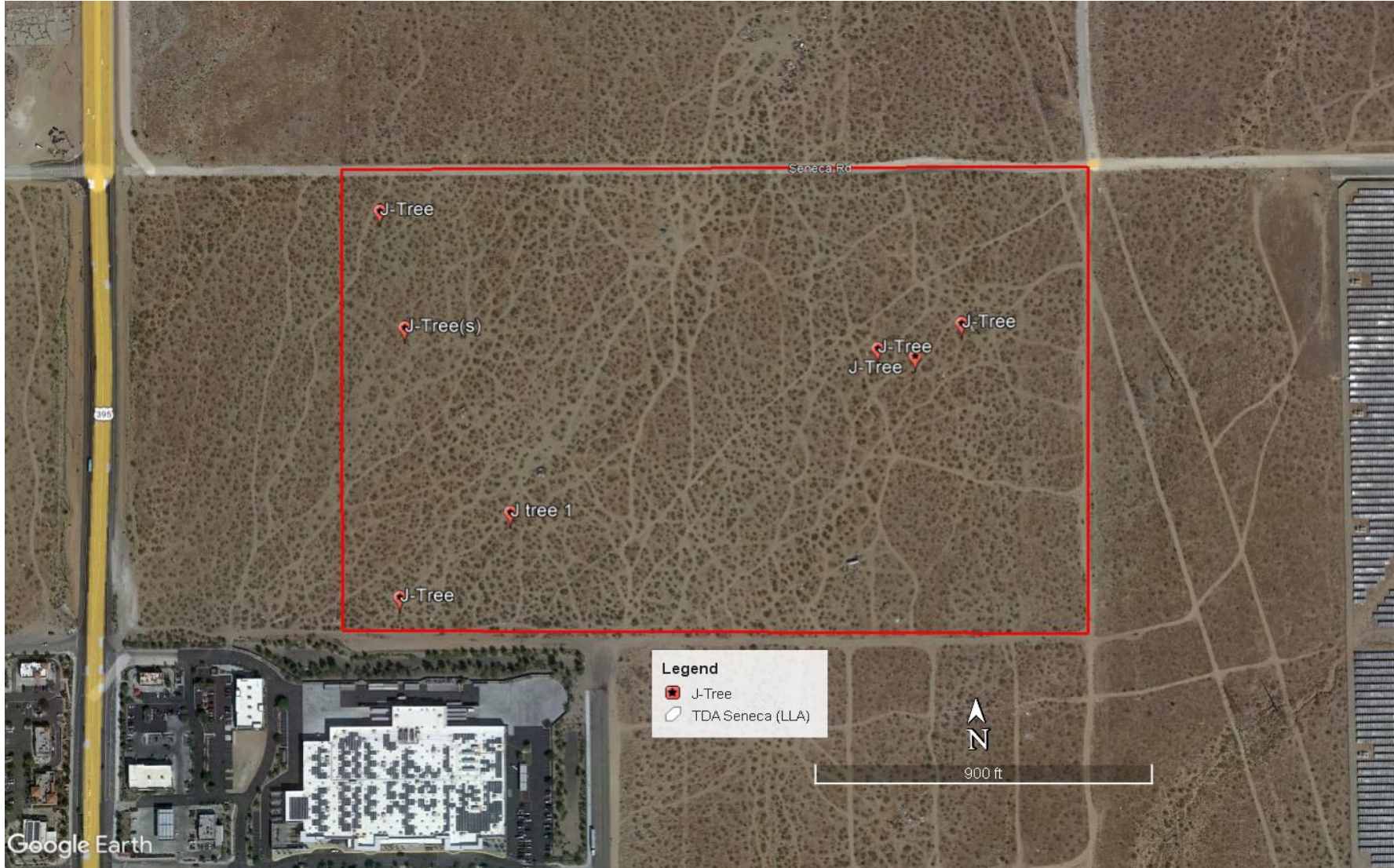
SCALE: 1" = 80'
SHEET 3 OF 3

PLAT DATE: March 23, 2023



SOURCE: Jacobs, Google Earth

FIGURE 4



SOURCE: Jacobs, BRA dated September 2022

FIGURE IV-1



SOURCE: Jacobs, BRA dated September 2022

FIGURE IV-2



SOURCE: Jacobs, BRA dated September 2022

FIGURE IV-3

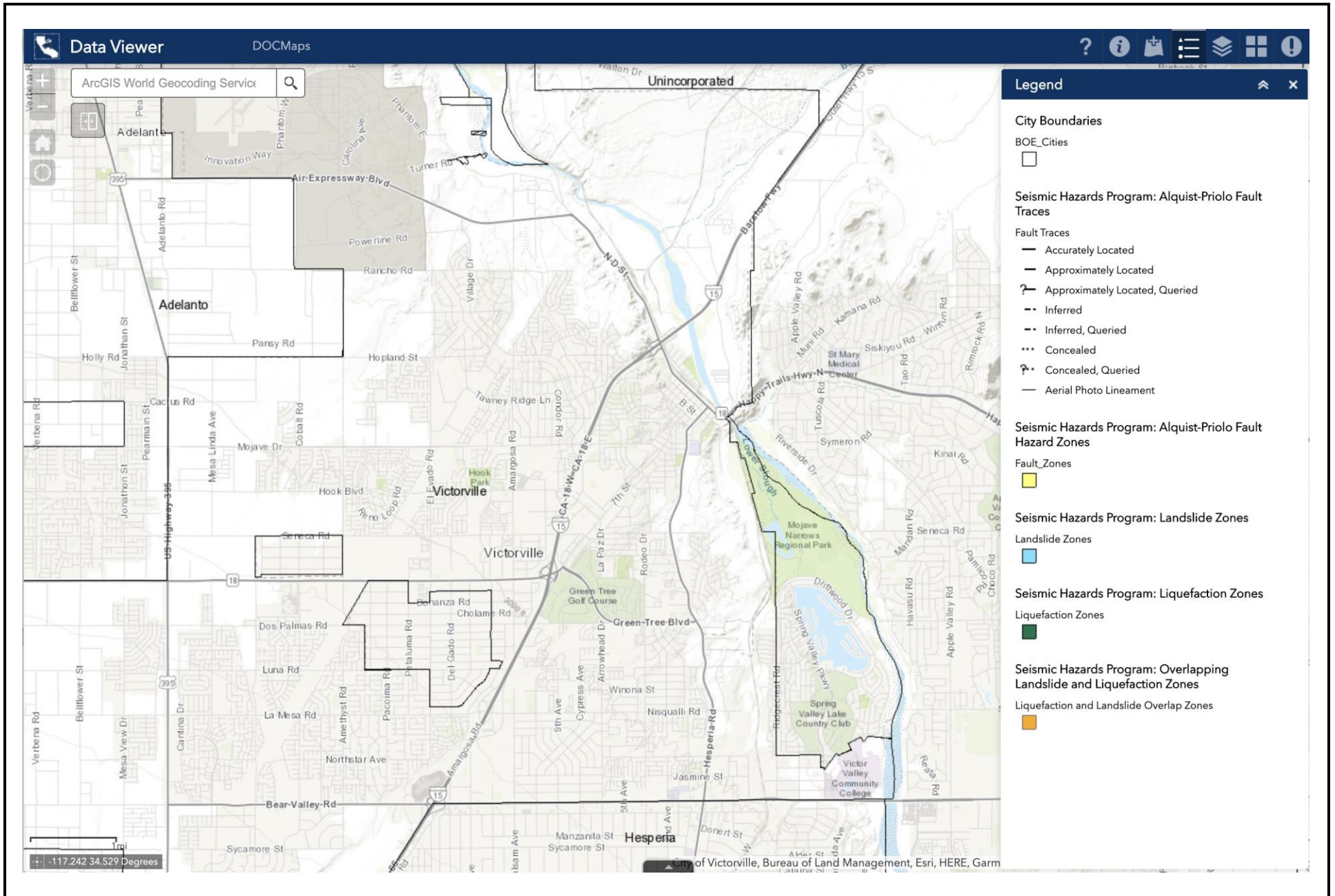
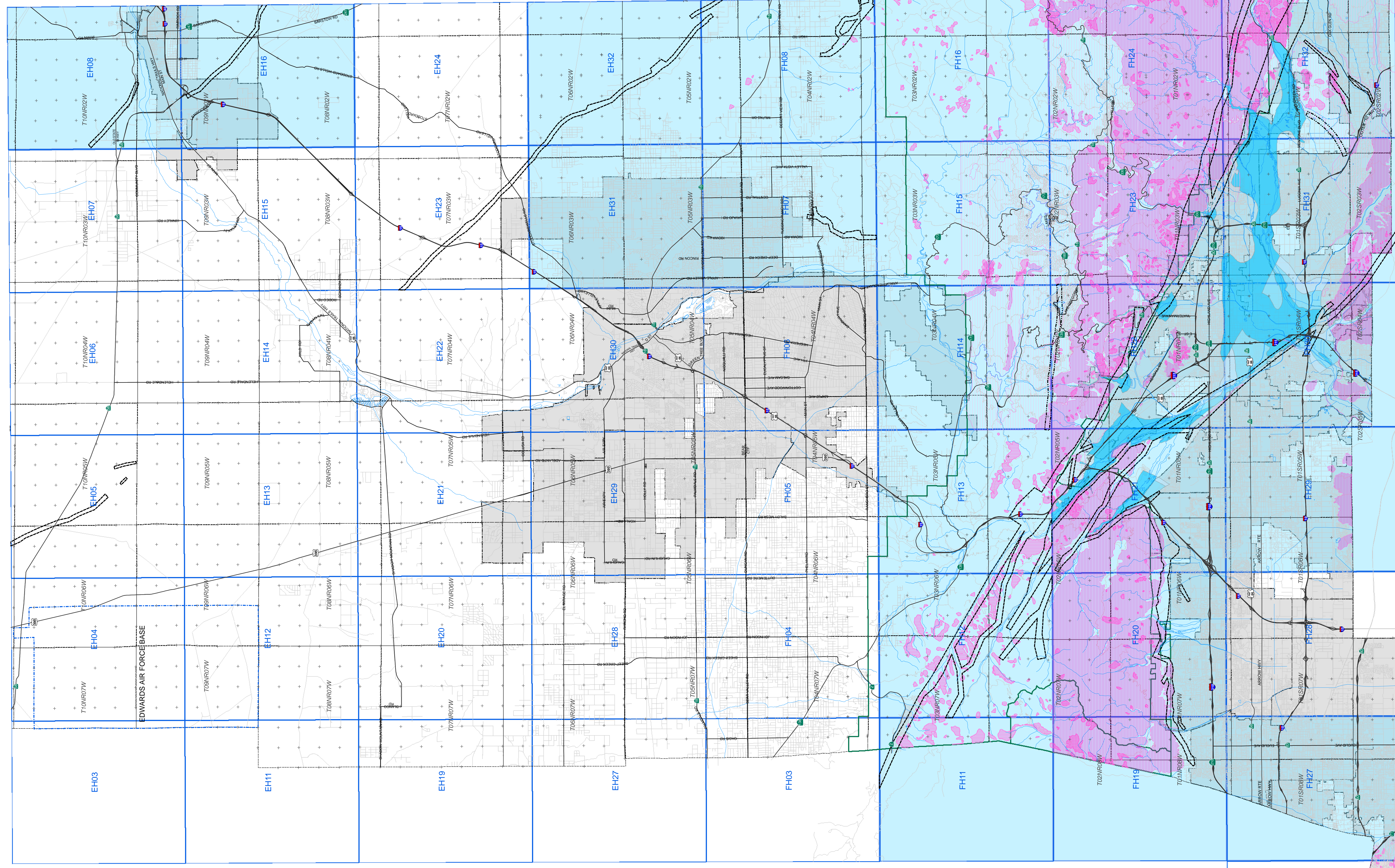


FIGURE VII-1

See CHDH C



See GHHC C

San Bernardino County Land Use Plan
GENERAL PLAN
 Geologic Hazard Overlays

Generalized Landslide Susceptibility

- Low to Moderate
- High
- Major Earthquake Fault Zone
- Revised Hazard Areas (Forest Risk Only)

Map data originally compiled on 1:60,000 scale, reprojected map by U.S. Geological Survey, 2014 and by U.S. Geological Survey, 2014. Positional accuracy of map data is at best plus or minus 100 feet.

Zone of Suspected Liquefaction Susceptibility

- Zone of Susceptibility
- Cities

The Zone of Suspected Liquefaction Susceptibility was compiled by the San Bernardino County Geologist, 2009. Positional accuracy of map data is at best plus or minus 200 feet.

Generalized Liquefaction Susceptibility

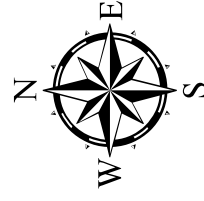
- Low
- Medium
- High

Map data originally compiled on 1:60,000 scale, reprojected map by U.S. Geological Survey, 2014 and by U.S. Geological Survey, 2014. Positional accuracy of map data is at best plus or minus 100 feet.

Earthquake Fault Zones

- Earthquake Fault Zone Boundary
- County Designated Fault Zones
- Detail Quad Map

Map data compiled on 1:12,500 and 1:25,000 scale, reprojected map by the State of California, Division of Mines and Geology, 1997. Positional accuracy of map data is at best plus or minus 100 feet.

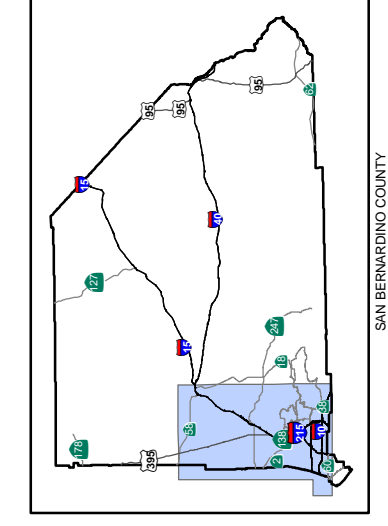


SCALE 1:115,200



MPL 03/20/13

2013/03/20



VICTORVILLE/SAN BERNARDINO

FIGURE VII-2

See EFIG C

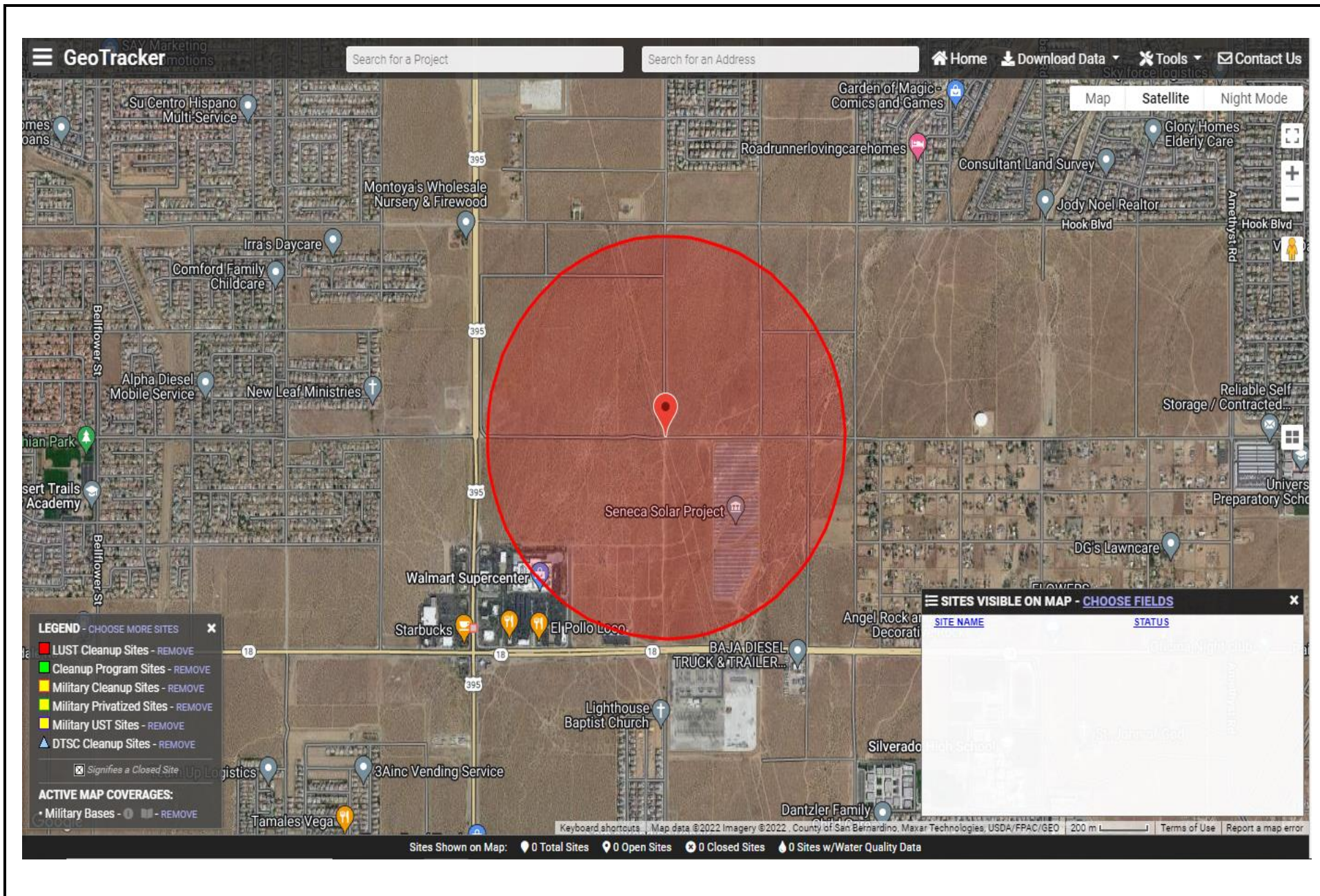


FIGURE IX-1

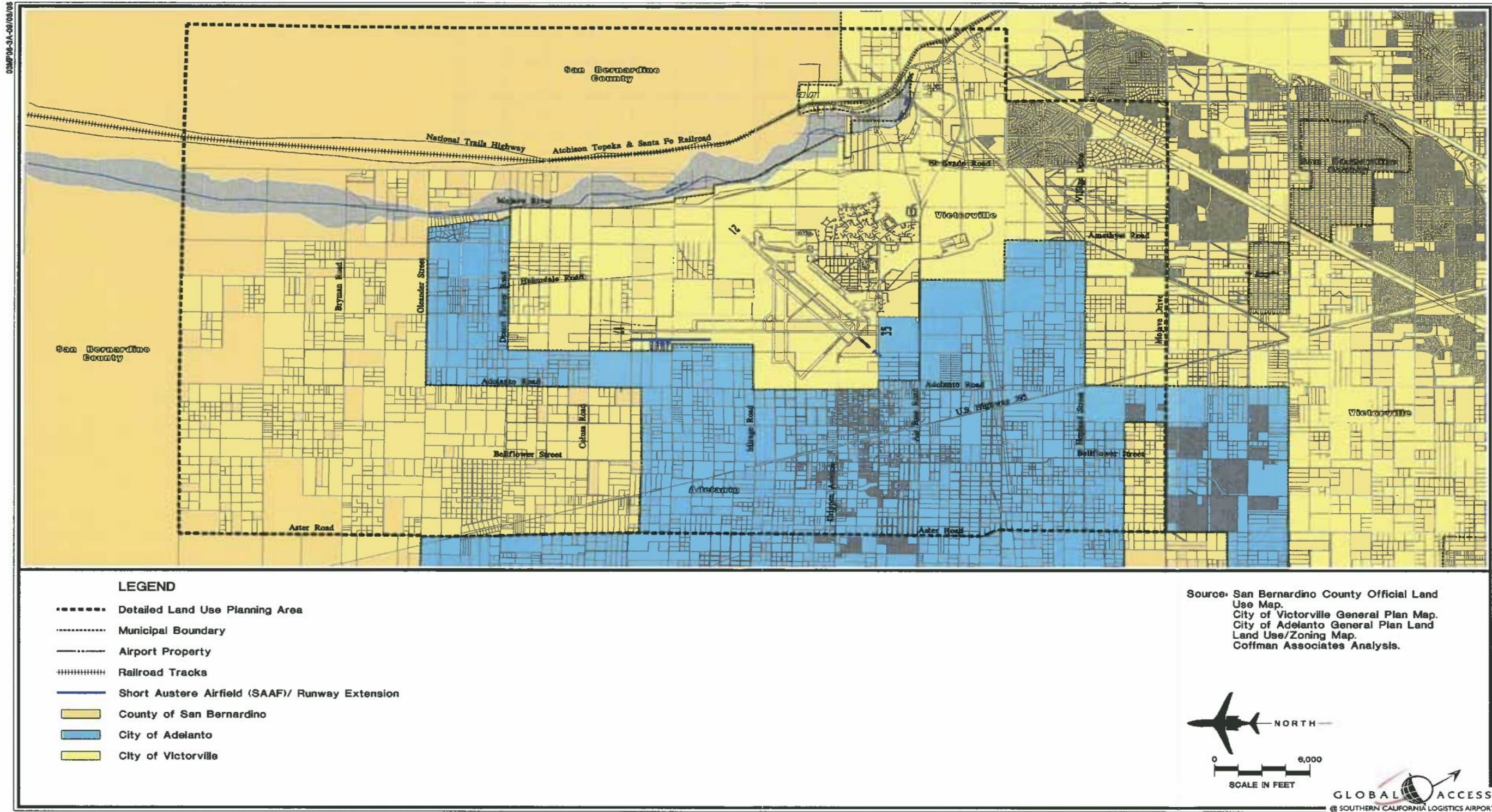
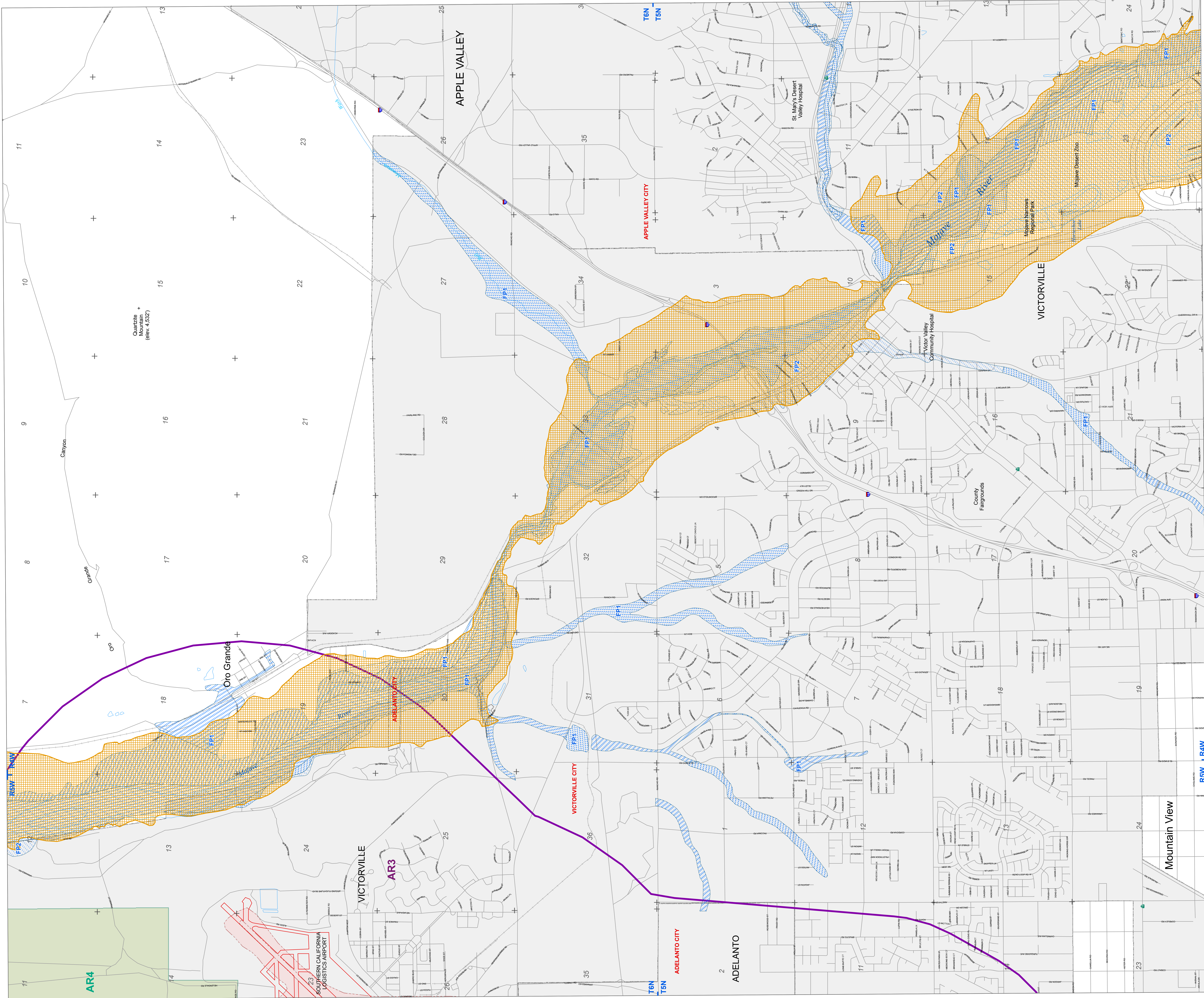


FIGURE IX-2



San Bernardino County Land Use Plan
GENERAL PLAN
 Hazard Overlays

Dam Inundation
 Area of inundation
 Line of inundation
 Dam
 Limit of Study

Map data compiled on 7/2/2015 using 1:50,000 scale USGS quadrangle
 Map data compiled on 7/2/2015 using 1:50,000 scale USGS quadrangle
 Positional accuracy of map data is at best plus or minus 750 feet.
 minus 500 feet.

Flood Plain Safety (FP) Overlay District
 FP1 (Zone A - Inside 100 Year Flood Plain)
 FP2 (Zone X - Inside 500 Year Flood Plain)
 FP3 (Local Flood Data)

Map data compiled on 7/2/2015 using 1:50,000 scale USGS quadrangle
 Map data compiled on 7/2/2015 using 1:50,000 scale USGS quadrangle
 Positional accuracy of map data is at best plus or minus 150 feet.
 minus 100 feet.

Noise Hazard (NH) Overlay District
 Noise Contour in LDN
 Runway Location

Map data compiled on 7/2/2015 using 1:50,000 scale USGS quadrangle
 Map data compiled on 7/2/2015 using 1:50,000 scale USGS quadrangle
 Positional accuracy of map data is at best plus or minus 750 feet.
 minus 500 feet.

Fire Safety (FS) Overlay District
 Fire Safety Boundary
 FS1 Fire Safety Area 1
 FS2 Fire Safety Area 2

Map data compiled on 7/2/2015 using 1:50,000 scale USGS quadrangle
 Map data compiled on 7/2/2015 using 1:50,000 scale USGS quadrangle
 Positional accuracy of map data is at best plus or minus 750 feet.
 minus 500 feet.

Airport Safety Review
 AR3 (Airport Safety Review Area 3)
 AR4 (Airport Safety Review Area 4)

Map data compiled on 7/2/2015 using 1:50,000 scale USGS quadrangle
 Map data compiled on 7/2/2015 using 1:50,000 scale USGS quadrangle
 Positional accuracy of map data is at best plus or minus 750 feet.
 minus 500 feet.

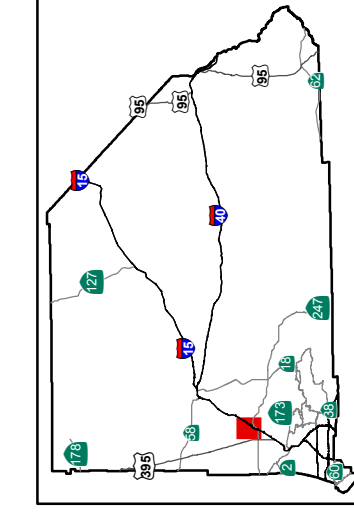
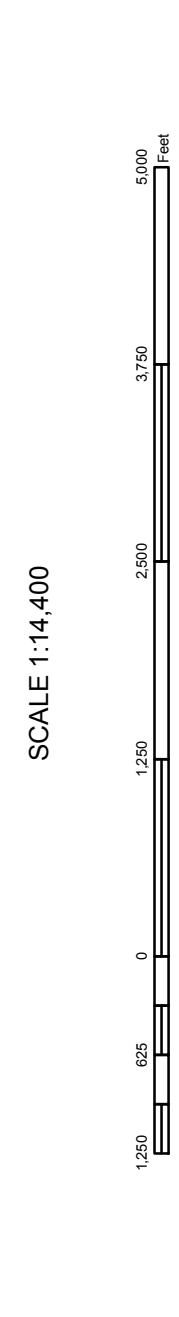


FIGURE IX-3

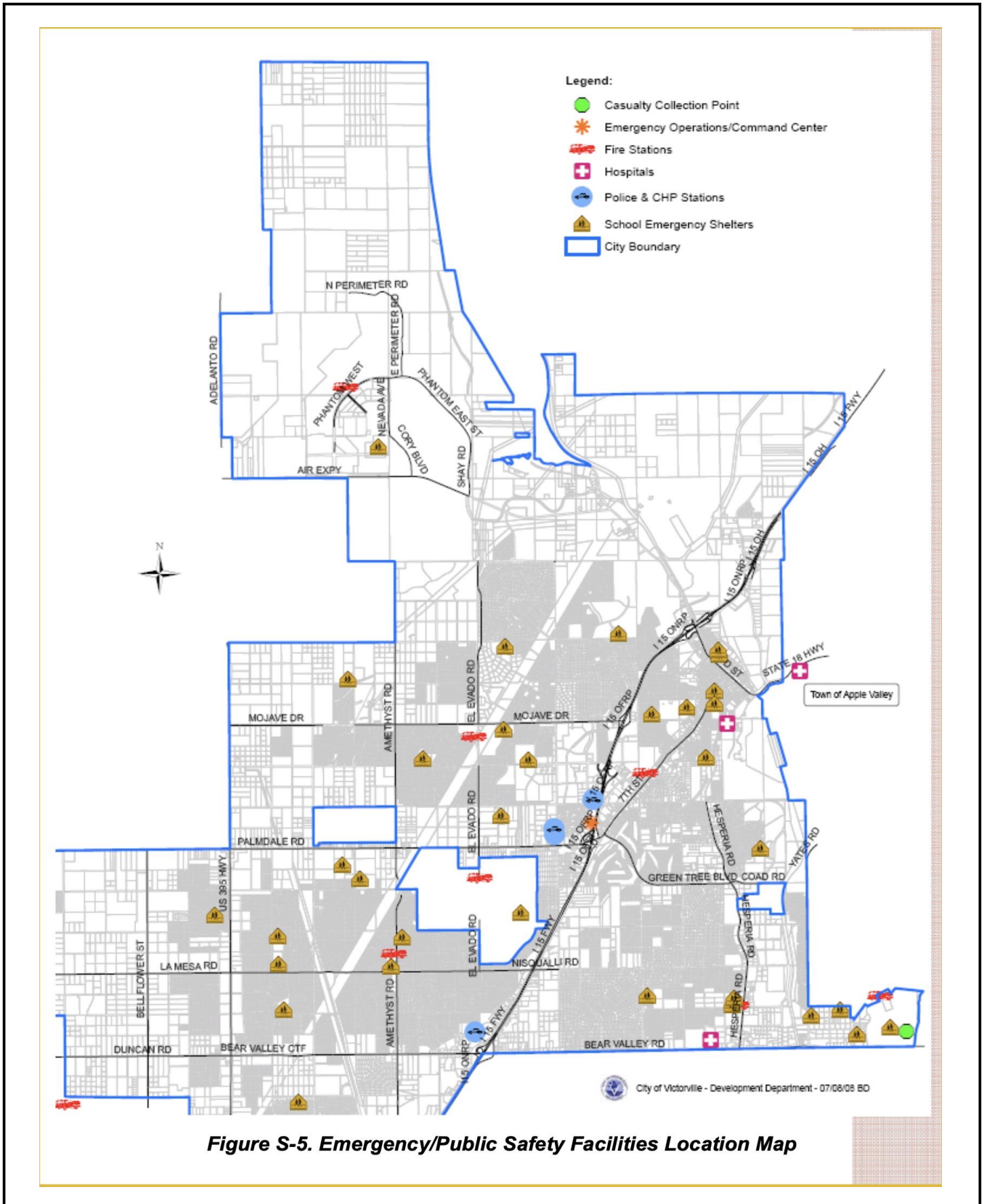


Figure S-5. Emergency/Public Safety Facilities Location Map

FIGURE IX-4

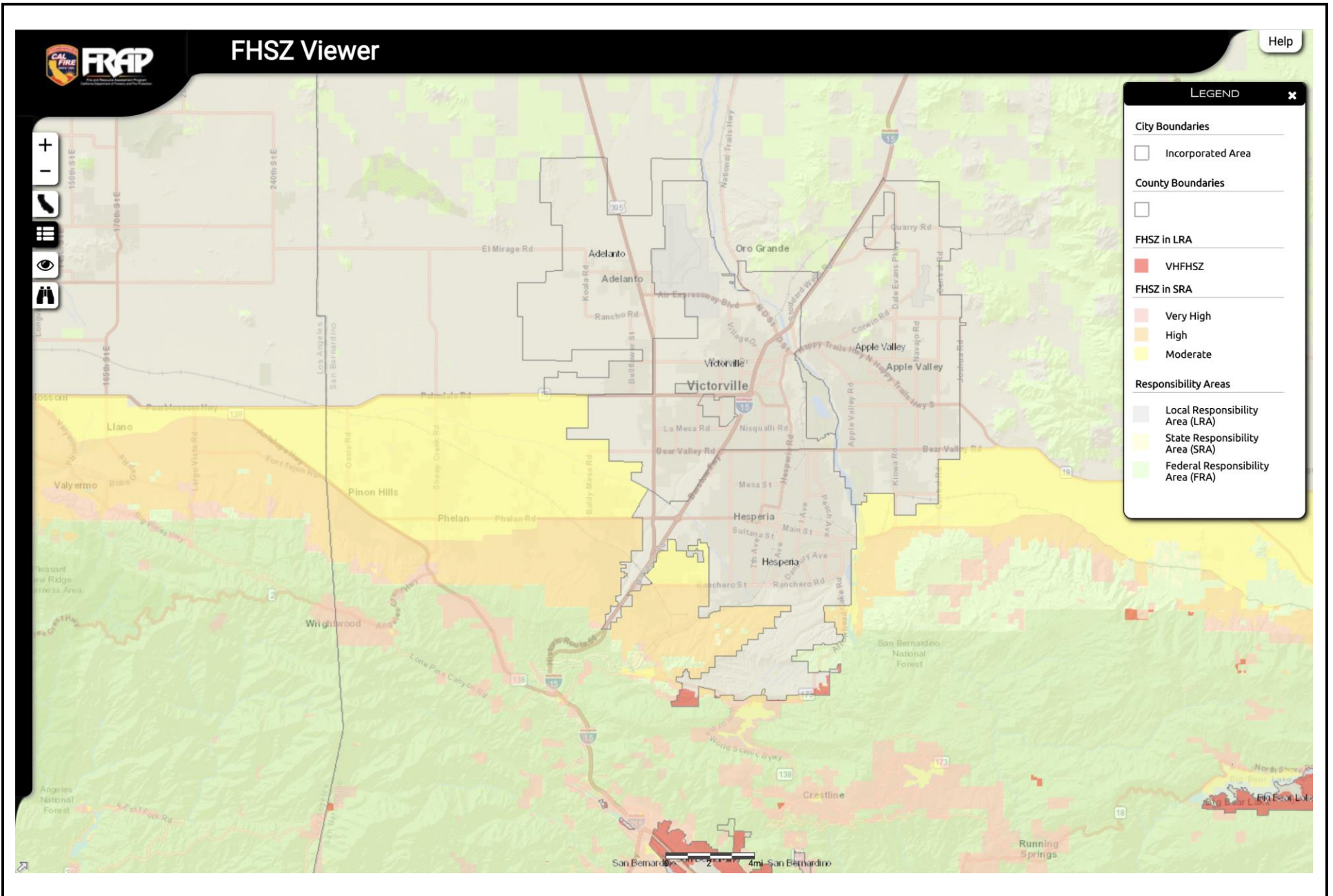
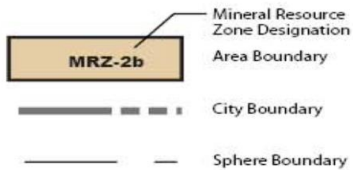
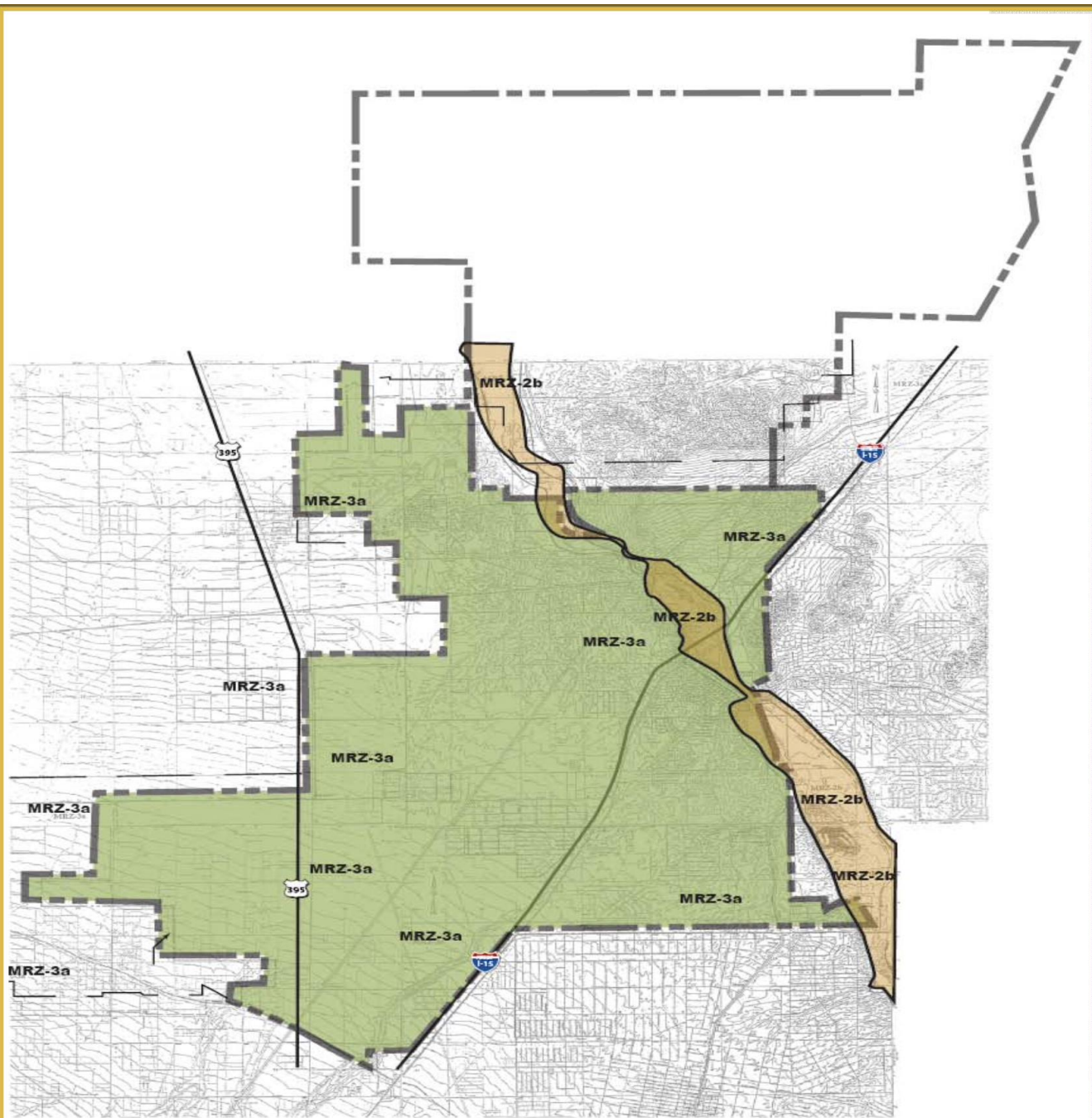


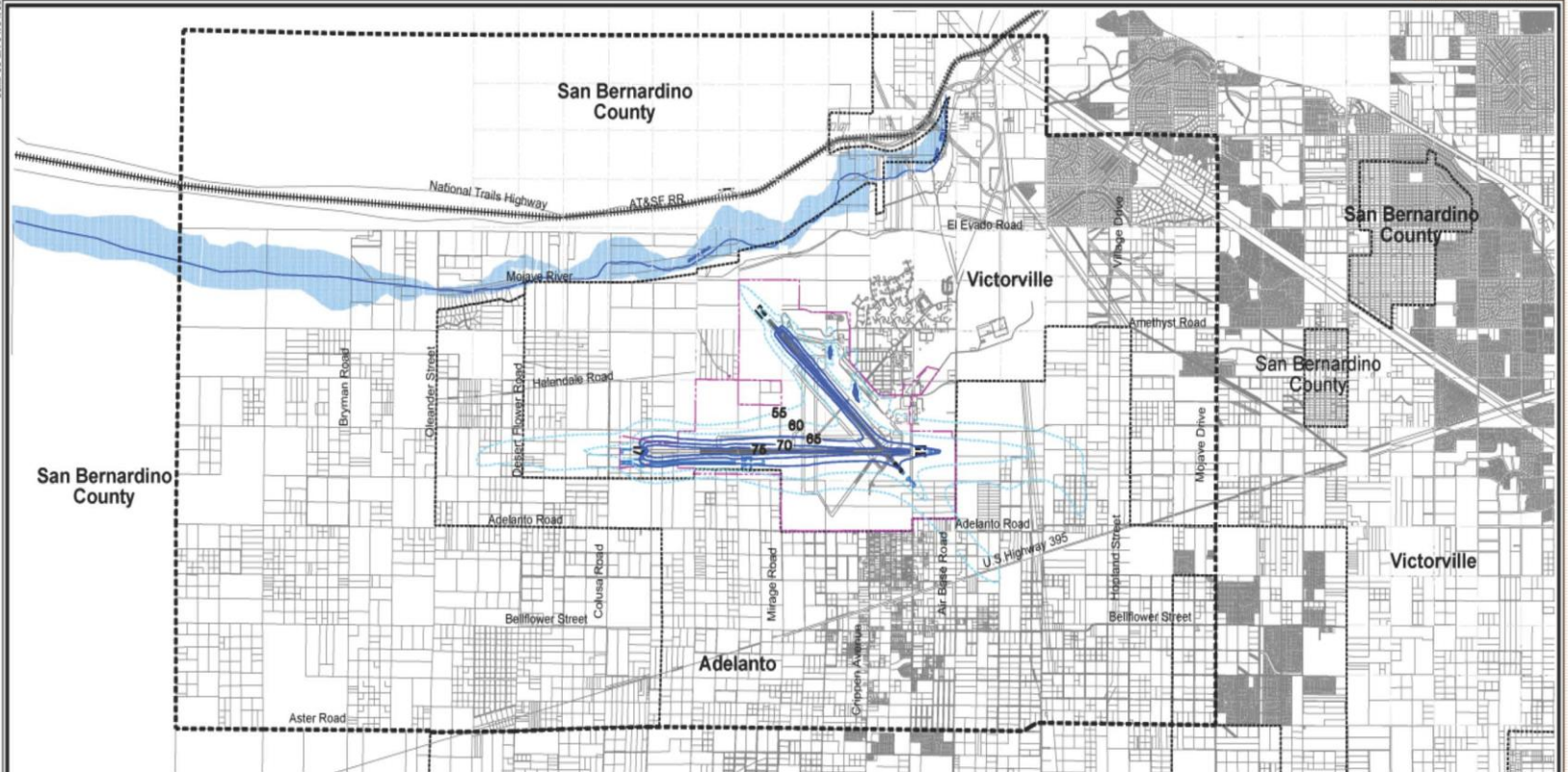
FIGURE IX-5



MR-1 No Significant Aggregate Deposits
 MRZ-2a Significant Aggregate Deposits
 MRZ-2b High Likelihood of Significant Aggregate Deposit
 MRZ-3a May Contain Significant Aggregate Deposit
 (See text for additional explanation of MRZ symbols)

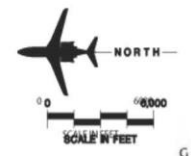


Figure RE-1. Victorville Planning Area Mineral Land Classification Map



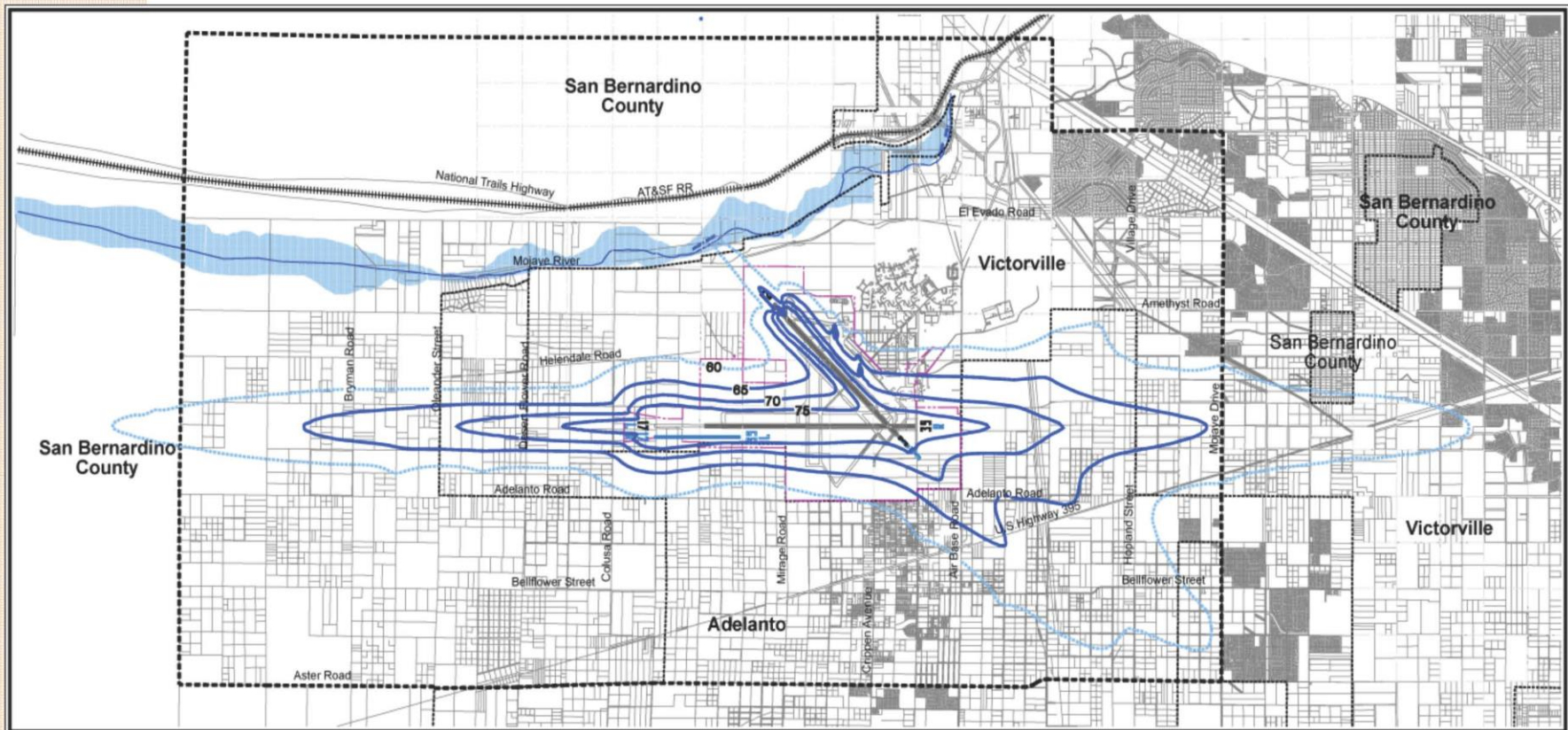
- LEGEND**
- Detailed Land Use Area
 - Municipal Boundary
 - Airport Property
 - Railroad Tracks
 - 2004 CNEL Contour - Marginal Effect
 - 2004 CNEL Contour - Significant Effect

Source- San Bernardino County Official Land Use Map.
 City of Victorville General Plan Map.
 City of Adelanto General Plan Land Use/Zoning Map.
 Coffman Associates Analysis.



GLOBAL ACCESS
 SOUTHERN CALIFORNIA LOGISTICS AIRPORT
Exhibit 2H
EXISTING NOISE CONTOURS

Figure N-1. SCLA Existing Airport Noise Contours



- LEGEND**
- Detailed Land Use Area
 - Municipal Boundary
 - Airport Property
 - Railroad Tracks
 - Long Range CNEL Contour - Marginal Effect
 - Long Range CNEL Contour - Significant Effect

Source: San Bernardino County Official Land Use Map
 City of Victorville General Plan Map
 City of Adelanto General Plan Land Use/Zoning Map
 Coffman Associates Analysis

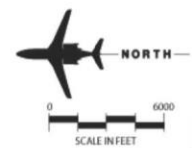


Figure N-2 (5.11-2. SCLA Proposed Future (2025) Airport Noise Contours)