

Transmission Structures

Splicing Tower Locations

Transmission New Optical Ground Wire

Overhead

Existing Access Roads

Access Road

Construction Areas

Pulling, Stringing, Tensioning Site/Structure Work Area

Right of Way

Wildlife Observations

Biological Species Points

Desert Tortoise Occurrence

Active Burrow

Live Tortoise

USFWS Critical Habitat

Desert Tortoise Critical Habitat

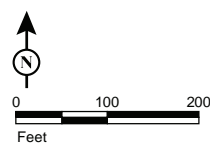
Public Land Survey System

Township, Range and Section

Land Ownership*

Mojave National Preserve (NPS)

* Areas with no color fill are private land.



Source: SCE, BLM, ESRI



FIGURE 5b

Special-Status Plants and Wildlife Segment 2

Page 161 of 192

*Southern California Edison
Lugo-Victorville 500 kV Transmission Line
Remedial Action Scheme Project*



Transmission Structures

- Optical Ground Wire Modifications Towers
- Existing Transmission Towers

Transmission New Optical Ground Wire

- Overhead

Existing Access Roads

- Access Road

Construction Areas

- Pulling, Stringing, Tensioning Site/Structure Work Area
- Structure Work Area

Right of Way

- Right of Way

USFWS Critical Habitat

- Desert Tortoise Critical Habitat

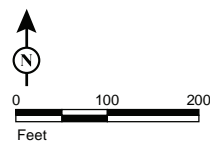
Public Land Survey System

- Township, Range and Section

Land Ownership*

- Mojave National Preserve (NPS)

* Areas with no color fill are private land.



Source: SCE, BLM, ESRI



FIGURE 5b
Special-Status Plants and Wildlife
Segment 2
 Page 162 of 192

Southern California Edison
Lugo-Victorville 500 kV Transmission Line
Remedial Action Scheme Project



- | | |
|---|----------------------------------|
| Transmission Structures | Structure Work Area |
| Existing Transmission Towers | Right of Way |
| Transmission New Optical Ground Wire | USFWS Critical Habitat |
| Overhead | Desert Tortoise Critical Habitat |
| Existing Access Roads | Public Land Survey System |
| Access Road | Township, Range and Section |
| Construction Areas | Land Ownership* |
| Helicopter Landing Zone | Mojave National Preserve (NPS) |
| Pulling, Stringing, Tensioning Site/Structure Work Area | |

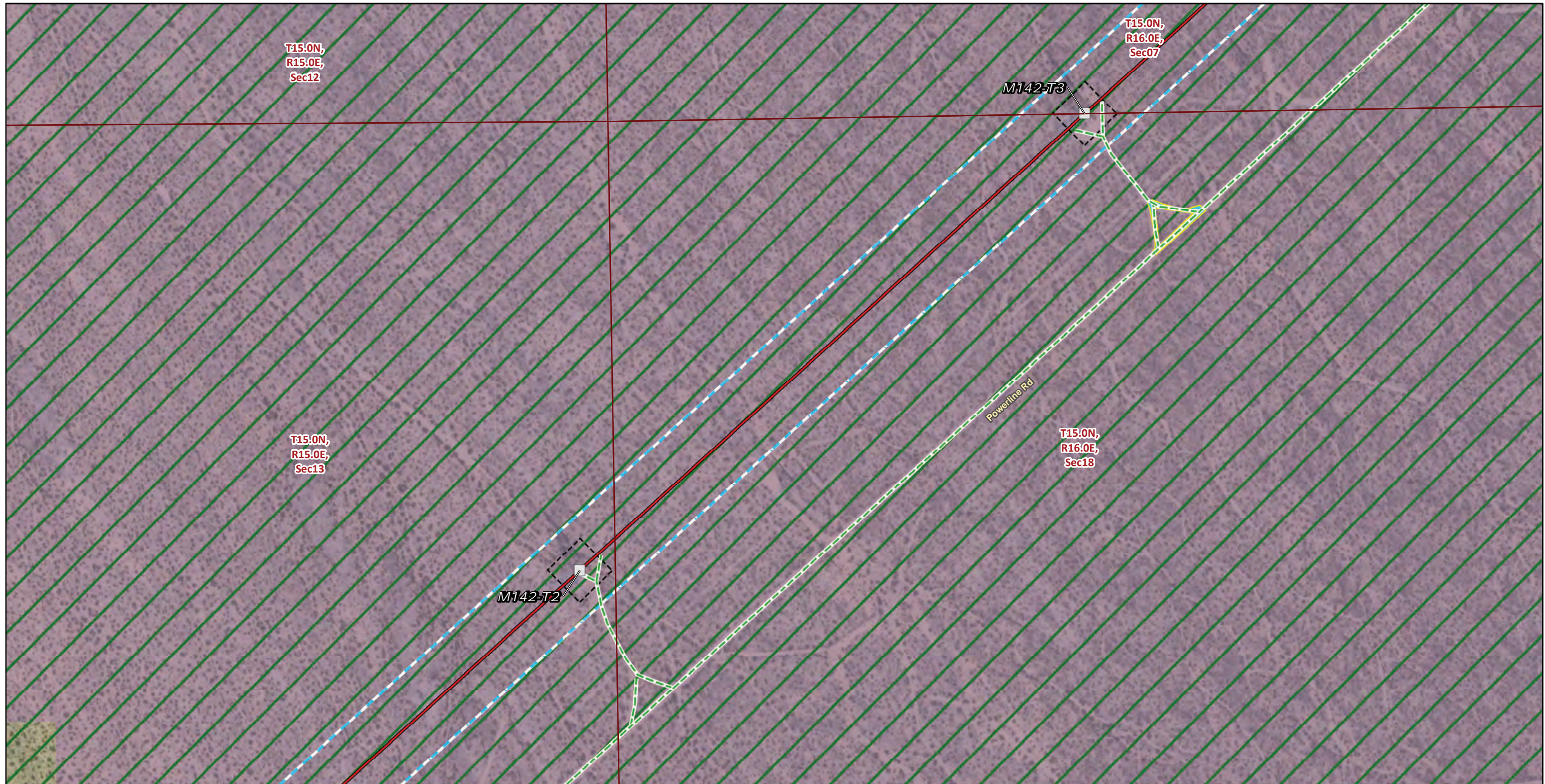
* Areas with no color fill are private land.

Source: SCE, BLM, ESRI



FIGURE 5b
Special-Status Plants and Wildlife
Segment 2
 Page 163 of 192

*Southern California Edison
 Lugo-Victorville 500 kV Transmission Line
 Remedial Action Scheme Project*



Transmission Structures

Existing Transmission Towers

Transmission New Optical Ground Wire

Overhead

Existing Access Roads

Access Road

Construction Areas

Helicopter Landing Zone

Structure Work Area

Right of Way

USFWS Critical Habitat

Desert Tortoise Critical Habitat

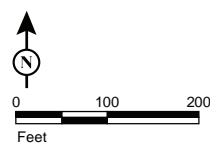
Public Land Survey System

Township, Range and Section

Land Ownership*

Mojave National Preserve (NPS)

* Areas with no color fill are private land.

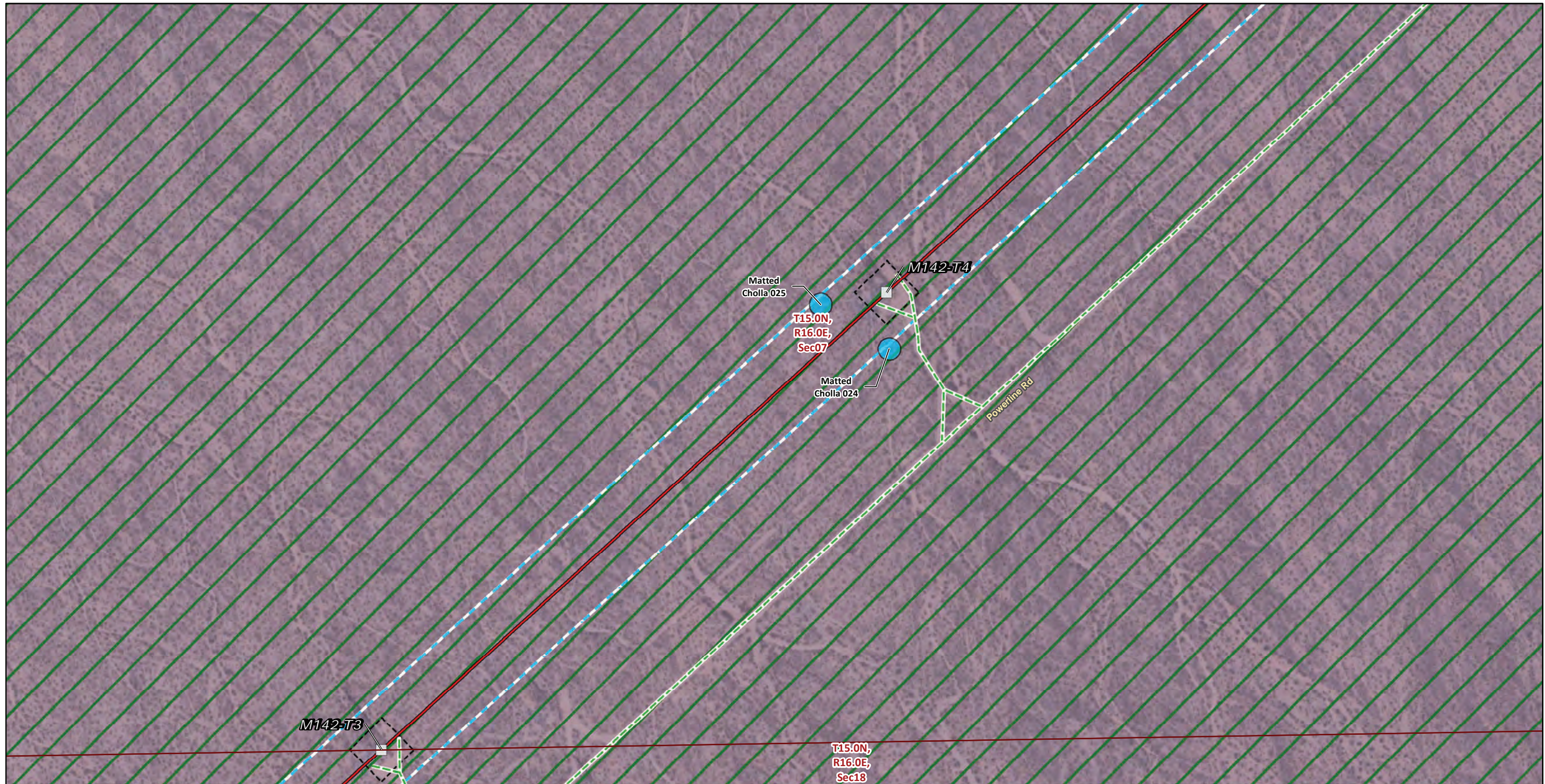


Source: SCE, BLM, ESRI



FIGURE 5b
Special-Status Plants and Wildlife
Segment 2
 Page 164 of 192

*Southern California Edison
 Lugo-Victorville 500 kV Transmission Line
 Remedial Action Scheme Project*

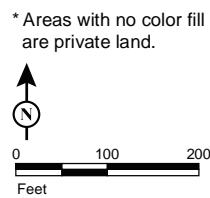


Transmission Structures

- Existing Transmission Towers
- Transmission New Optical Ground Wire
- Overhead
- Existing Access Roads
- Access Road
- Construction Areas
- Structure Work Area
- Right of Way

Plant Population (Species code)

- Matted cholla (GRUPAR)
- USFWS Critical Habitat
- Desert Tortoise Critical Habitat
- Public Land Survey System
- Township, Range and Section
- Land Ownership*
- Mojave National Preserve (NPS)



Source: SCE, BLM, ESRI

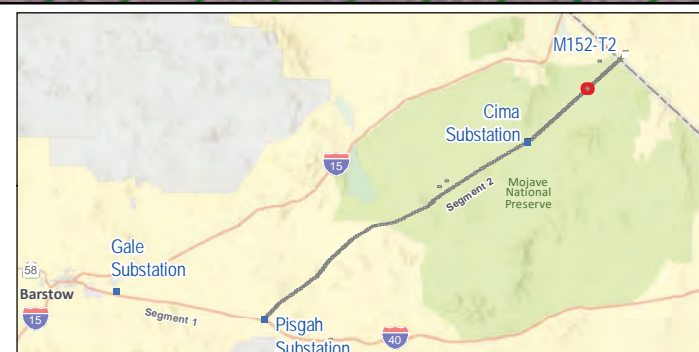


FIGURE 5b
Special-Status Plants and Wildlife
Segment 2
 Page 165 of 192

Southern California Edison
 Lugo-Victorville 500 kV Transmission Line
 Remedial Action Scheme Project



Transmission Structures

Existing Transmission Towers

Transmission New Optical Ground Wire

Overhead

Existing Access Roads

Access Road

Construction Areas

Helicopter Landing Zone

Structure Work Area

Right of Way

Plant Population (Species code)

Matted cholla (GRUPAR)

USFWS Critical Habitat

Desert Tortoise Critical Habitat

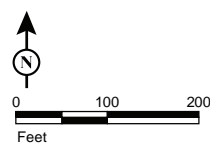
Public Land Survey System

Township, Range and Section

Land Ownership*

Mojave National Preserve (NPS)

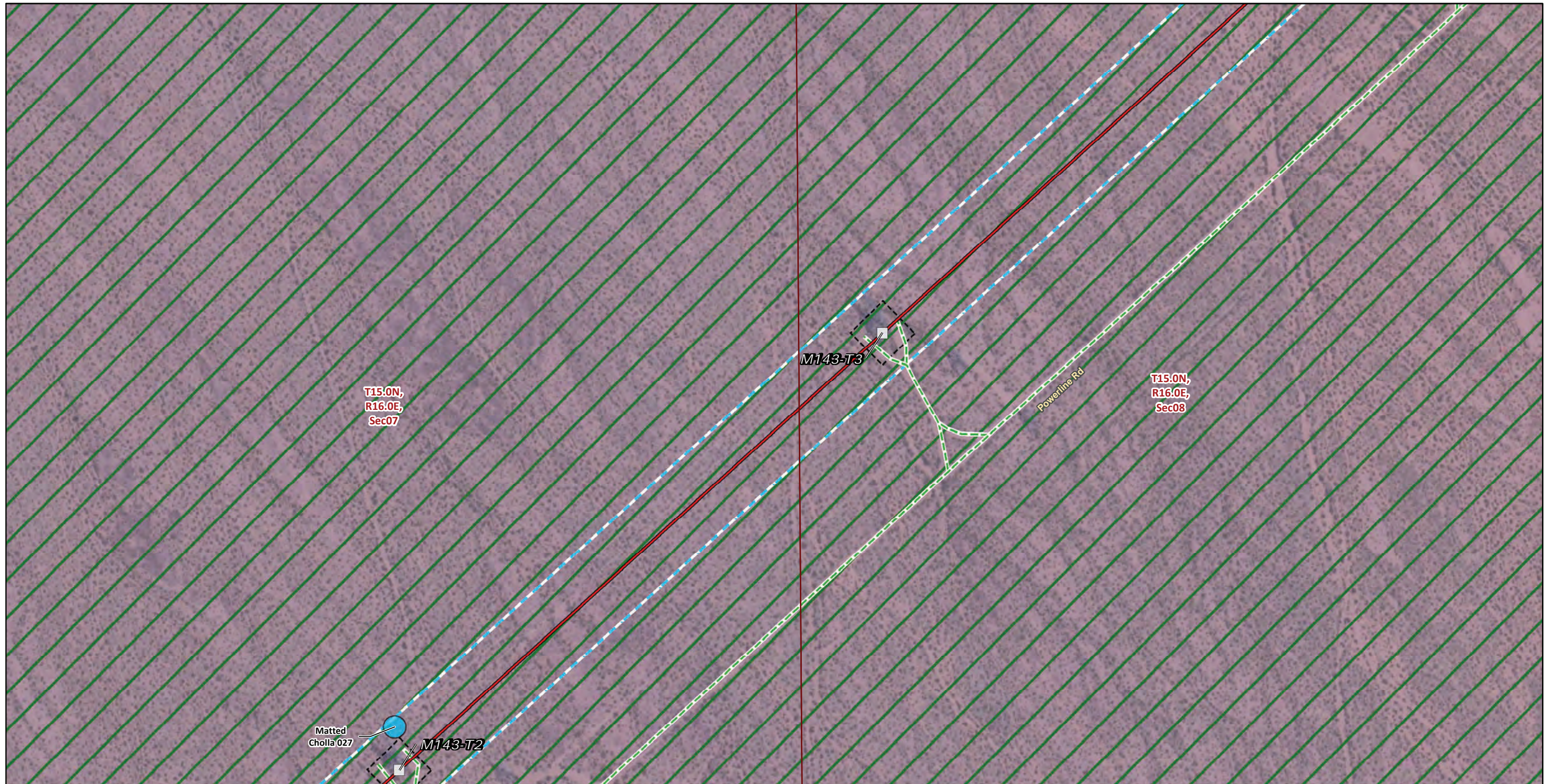
* Areas with no color fill are private land.



Source: SCE, BLM, ESRI



FIGURE 5b
Special-Status Plants and Wildlife
Segment 2
Page 166 of 192



Transmission Structures

Existing Transmission Towers

Transmission New Optical Ground Wire

Overhead

Existing Access Roads

Access Road

Construction Areas

Structure Work Area

Right of Way

Plant Population (Species code)

Matted cholla (GRUPAR)

USFWS Critical Habitat

Desert Tortoise Critical Habitat

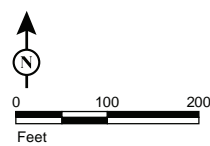
Public Land Survey System

Township, Range and Section

Land Ownership*

Mojave National Preserve (NPS)

* Areas with no color fill are private land.



Source: SCE, BLM, ESRI

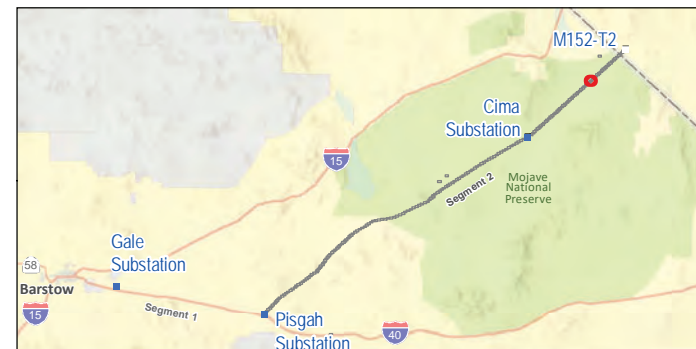
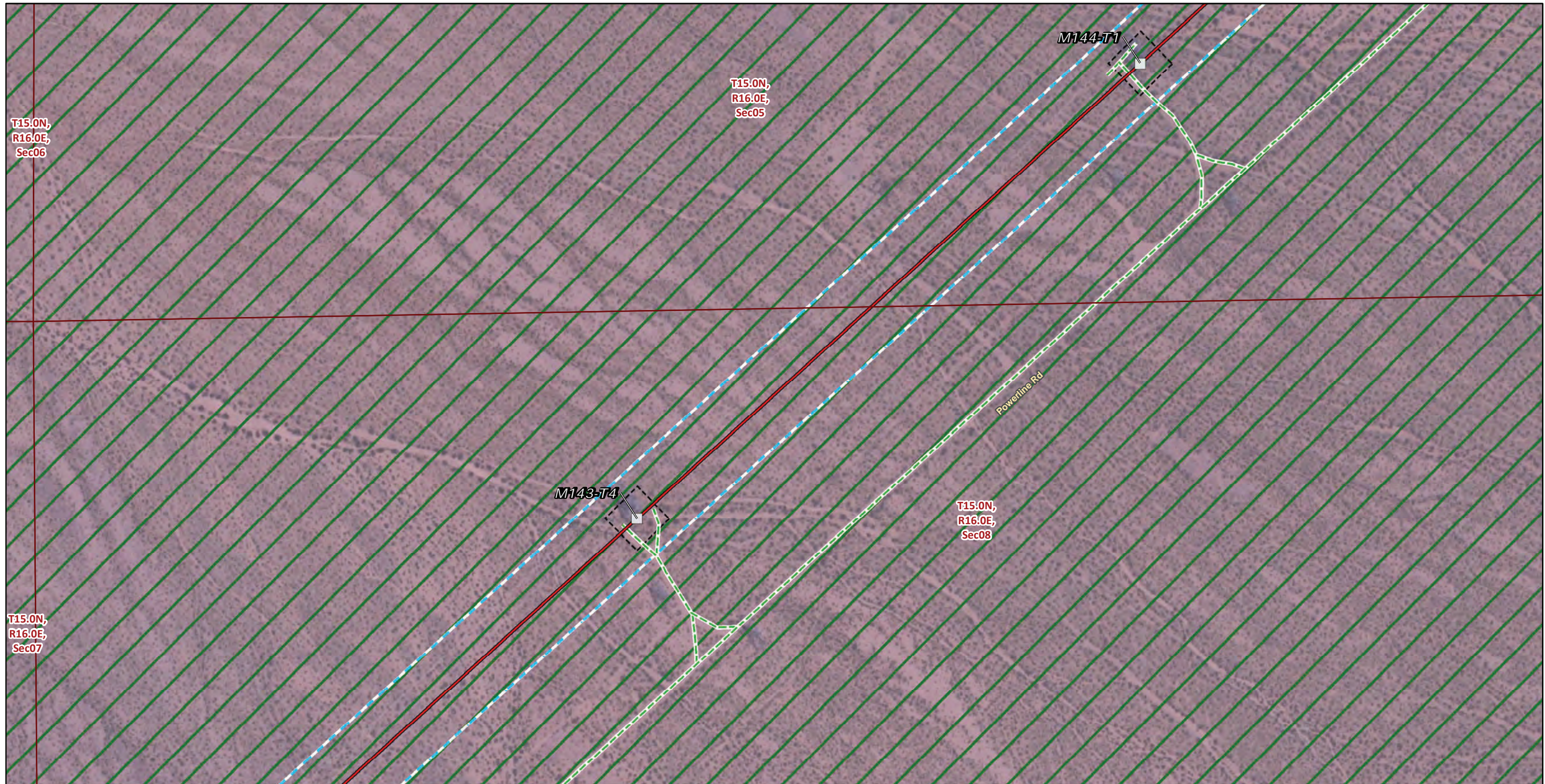


FIGURE 5b
Special-Status Plants and Wildlife
Segment 2
 Page 167 of 192

Southern California Edison
Lugo-Victorville 500 kV Transmission Line
Remedial Action Scheme Project



Transmission Structures

- Existing Transmission Towers
- Transmission New Optical Ground Wire**
- Overhead
- Existing Access Roads**
- Access Road
- Construction Areas**
- Structure Work Area
- Right of Way

USFWS Critical Habitat

- Desert Tortoise Critical Habitat

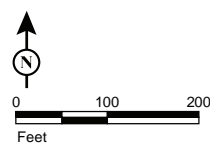
Public Land Survey System

- Township, Range and Section

Land Ownership*

- Mojave National Preserve (NPS)

* Areas with no color fill are private land.



Source: SCE, BLM, ESRI



FIGURE 5b
Special-Status Plants and Wildlife
Segment 2
 Page 168 of 192

*Southern California Edison
 Lugo-Victorville 500 kV Transmission Line
 Remedial Action Scheme Project*



Transmission Structures

Splicing Tower Locations

Existing Transmission Towers

Transmission New Optical Ground Wire

Overhead

Existing Access Roads

Access Road

Construction Areas

Pulling, Stringing, Tensioning Site/Structure Work Area

Structure Work Area

Right of Way

Plant Population (Species code)

Curved-Spine Beavertail (OPUBAS)

USFWS Critical Habitat

Desert Tortoise Critical Habitat

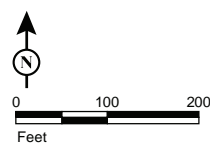
Public Land Survey System

Township, Range and Section

Land Ownership*

Mojave National Preserve (NPS)

* Areas with no color fill are private land.



Source: SCE, BLM, ESRI

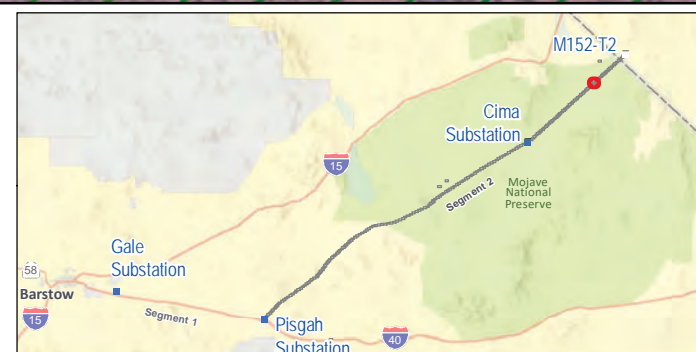


FIGURE 5b
Special-Status Plants and Wildlife
Segment 2
 Page 169 of 192



- | | |
|---|--|
| Transmission Structures | Right of Way |
| Existing Transmission Towers | Plant Population (Species code) |
| Transmission New Optical Ground Wire | Matted cholla (GRUPAR) |
| Overhead | USFWS Critical Habitat |
| Existing Access Roads | Desert Tortoise Critical Habitat |
| Access Road | Public Land Survey System |
| Construction Areas | Township, Range and Section |
| Pulling, Stringing, Tensioning Site/Structure Work Area | Land Ownership* |
| Structure Work Area | Mojave National Preserve (NPS) |

* Areas with no color fill are private land.

Source: SCE, BLM, ESRI



FIGURE 5b
Special-Status Plants and Wildlife
Segment 2
 Page 170 of 192

*Southern California Edison
 Lugo-Victorville 500 kV Transmission Line
 Remedial Action Scheme Project*



Transmission Structures

Existing Transmission Towers

Transmission New Optical Ground Wire

Overhead

Existing Access Roads

Access Road

Construction Areas

Structure Work Area

Right of Way

USFWS Critical Habitat

Desert Tortoise Critical Habitat

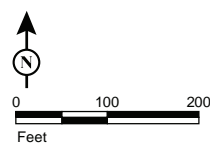
Public Land Survey System

Township, Range and Section

Land Ownership*

Mojave National Preserve (NPS)

* Areas with no color fill are private land.

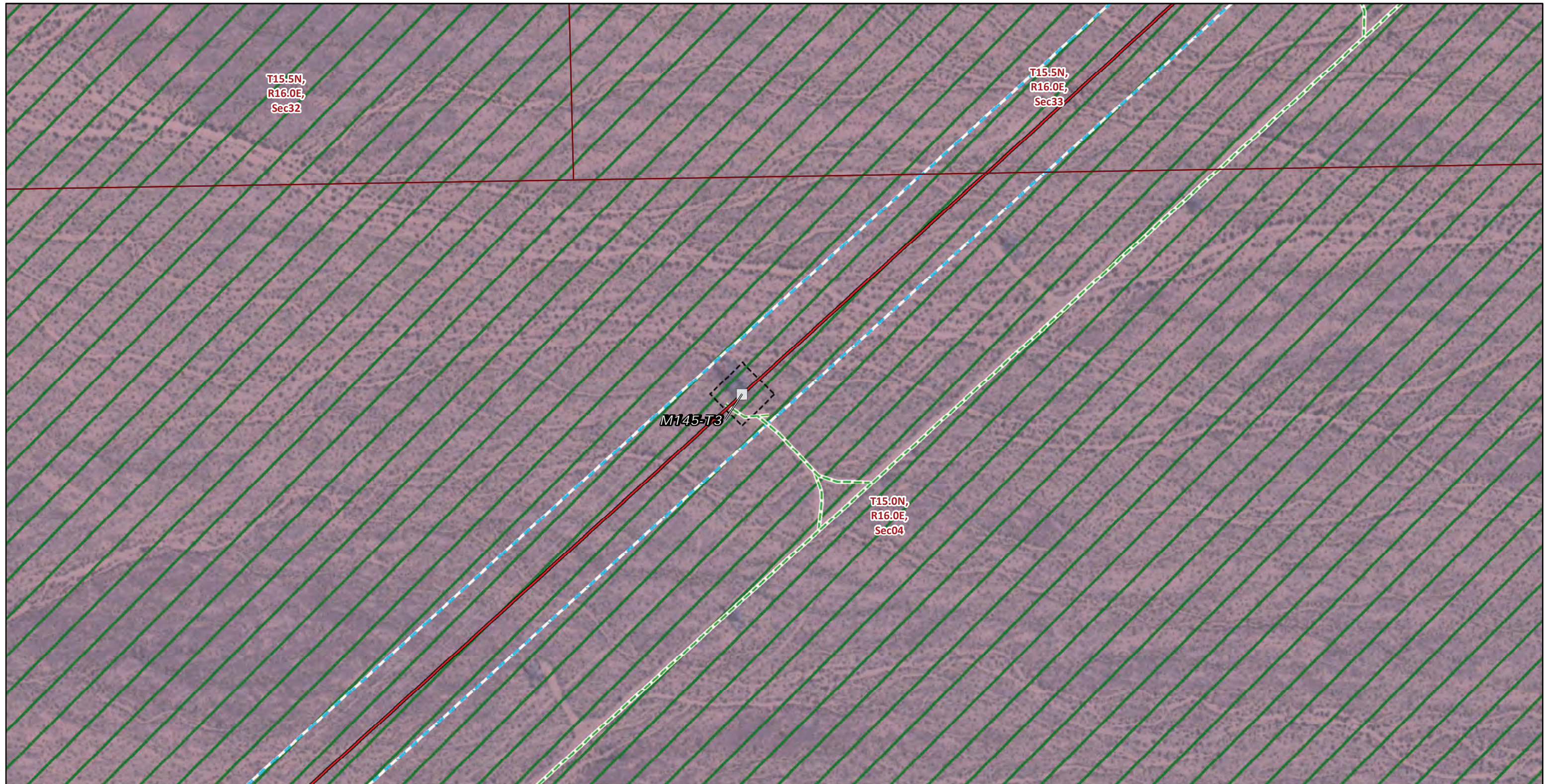


Source: SCE, BLM, ESRI



FIGURE 5b
Special-Status Plants and Wildlife
Segment 2
 Page 171 of 192

Southern California Edison
 Lugo-Victorville 500 kV Transmission Line
 Remedial Action Scheme Project



Transmission Structures

Existing Transmission Towers

Transmission New Optical Ground Wire

Overhead

Existing Access Roads

Access Road

Construction Areas

Structure Work Area

Right of Way

USFWS Critical Habitat

Desert Tortoise Critical Habitat

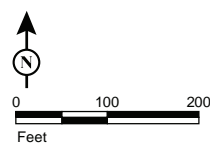
Public Land Survey System

Township, Range and Section

Land Ownership*

Mojave National Preserve (NPS)

* Areas with no color fill are private land.



Source: SCE, BLM, ESRI



FIGURE 5b
Special-Status Plants and Wildlife
Segment 2
 Page 172 of 192

*Southern California Edison
 Lugo-Victorville 500 kV Transmission Line
 Remedial Action Scheme Project*



Transmission Structures

Existing Transmission Towers

Transmission New Optical Ground Wire

Overhead

Existing Access Roads

Access Road

Construction Areas

Structure Work Area

Right of Way

USFWS Critical Habitat

Desert Tortoise Critical Habitat

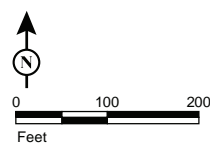
Public Land Survey System

Township, Range and Section

Land Ownership*

Mojave National Preserve (NPS)

* Areas with no color fill are private land.



Source: SCE, BLM, ESRI

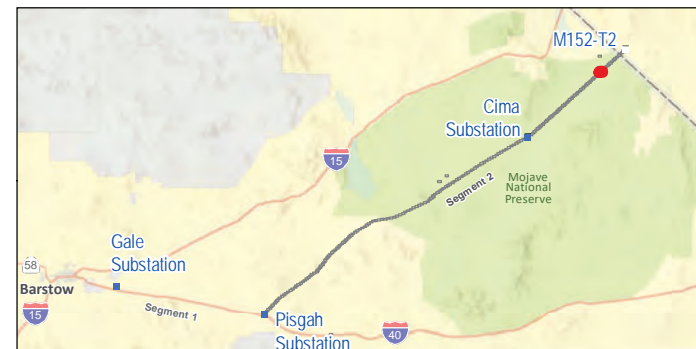


FIGURE 5b
Special-Status Plants and Wildlife
Segment 2
 Page 173 of 192

*Southern California Edison
 Lugo-Victorville 500 kV Transmission Line
 Remedial Action Scheme Project*



Transmission Structures

Existing Transmission Towers

Transmission New Optical Ground Wire

Overhead

Existing Access Roads

Access Road

Construction Areas

Structure Work Area

Right of Way

USFWS Critical Habitat

Desert Tortoise Critical Habitat

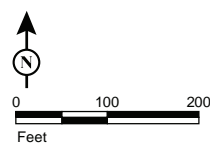
Public Land Survey System

Township, Range and Section

Land Ownership*

Mojave National Preserve (NPS)

* Areas with no color fill are private land.



Source: SCE, BLM, ESRI

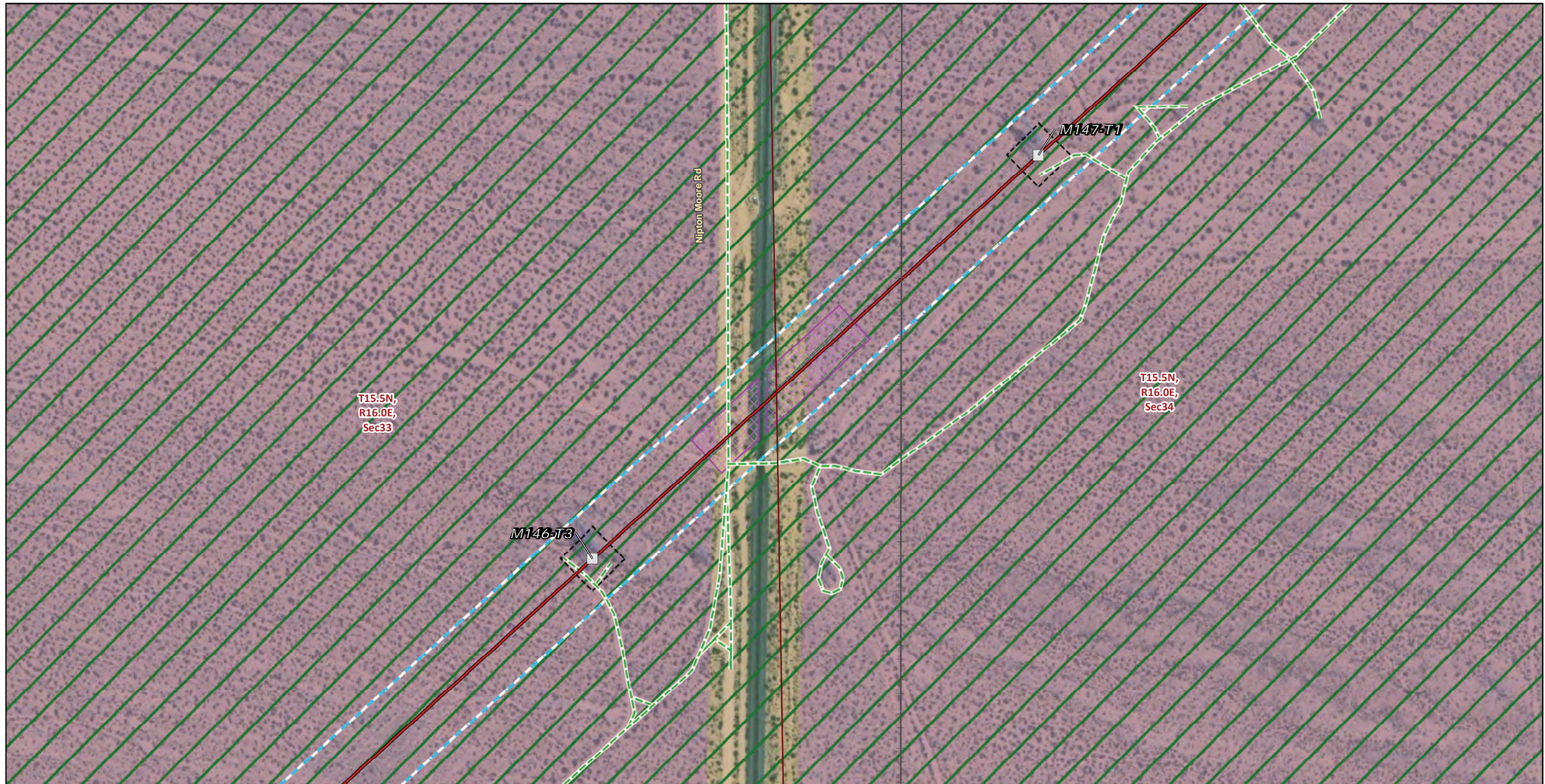


FIGURE 5b

**Special-Status Plants and Wildlife
Segment 2**

Page 174 of 192

*Southern California Edison
Lugo-Victorville 500 kV Transmission Line
Remedial Action Scheme Project*



Transmission Structures

Existing Transmission Towers

Transmission New Optical Ground Wire

Overhead

Existing Access Roads

Access Road

Construction Areas

Guard Structure

Structure Work Area

Right of Way

USFWS Critical Habitat

Desert Tortoise Critical Habitat

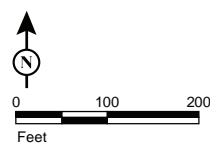
Public Land Survey System

Township, Range and Section

Land Ownership*

Mojave National Preserve (NPS)

* Areas with no color fill are private land.



Source: SCE, BLM, ESRI



FIGURE 5b

Special-Status Plants and Wildlife Segment 2

Page 175 of 192

*Southern California Edison
Lugo-Victorville 500 kV Transmission Line
Remedial Action Scheme Project*



Transmission Structures

Existing Transmission Towers

Transmission New Optical Ground Wire

Overhead

Existing Access Roads

Access Road

Construction Areas

Structure Work Area

Right of Way

USFWS Critical Habitat

Desert Tortoise Critical Habitat

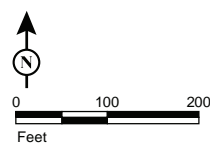
Public Land Survey System

Township, Range and Section

Land Ownership*

Mojave National Preserve (NPS)

* Areas with no color fill are private land.



Source: SCE, BLM, ESRI

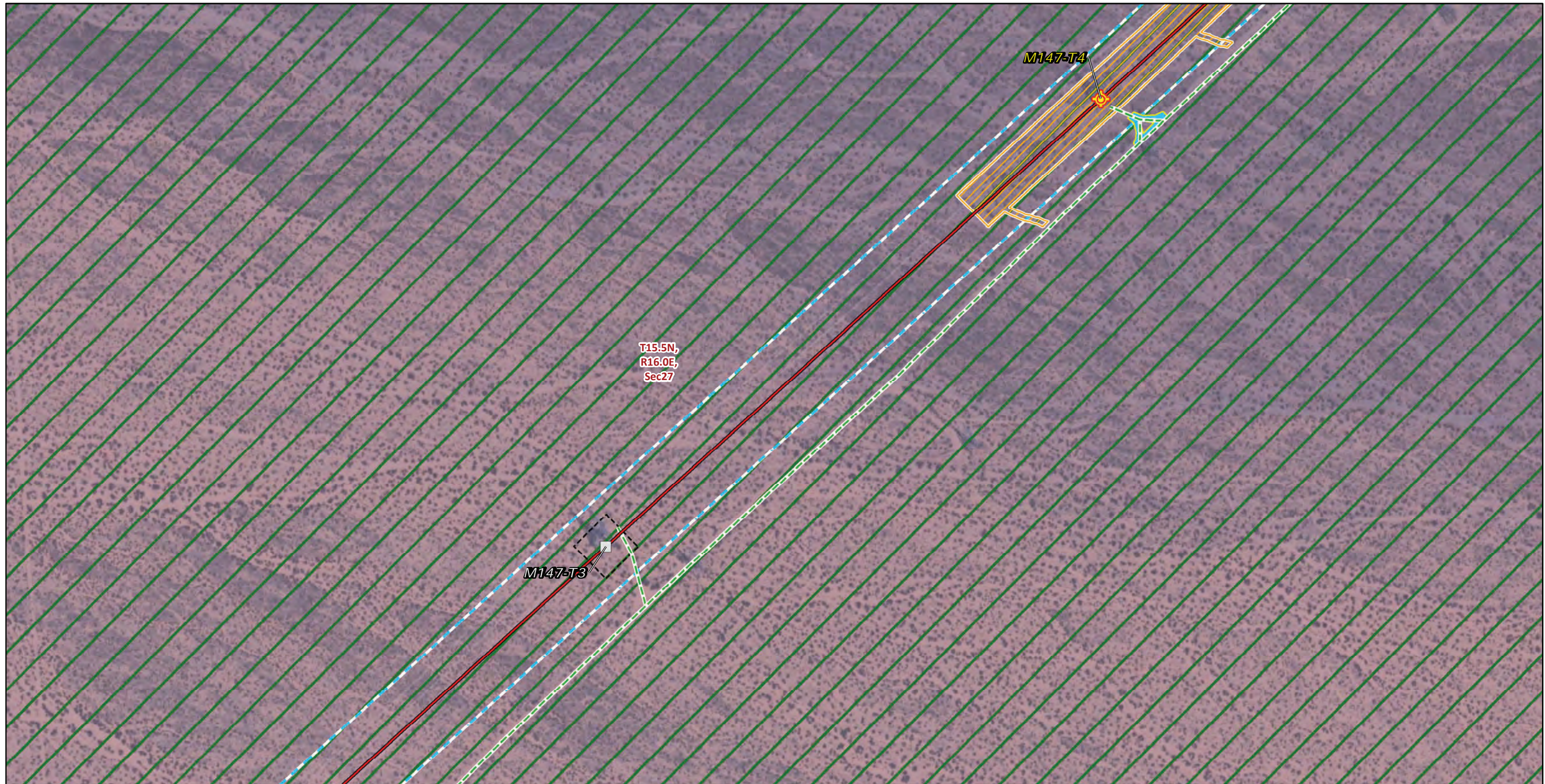


FIGURE 5b

**Special-Status Plants and Wildlife
Segment 2**

Page 176 of 192

*Southern California Edison
Lugo-Victorville 500 kV Transmission Line
Remedial Action Scheme Project*



- | | |
|---|---|
| Transmission Structures | Pulling, Stringing, Tensioning Site/Structure Work Area |
| Splicing Tower Locations | Structure Work Area |
| Existing Transmission Towers | Right of Way |
| Transmission New Optical Ground Wire | USFWS Critical Habitat |
| Overhead | Desert Tortoise Critical Habitat |
| Existing Access Roads | Public Land Survey System |
| Access Road | Township, Range and Section |
| Construction Areas | Land Ownership* |
| Helicopter Landing Zone | Mojave National Preserve (NPS) |

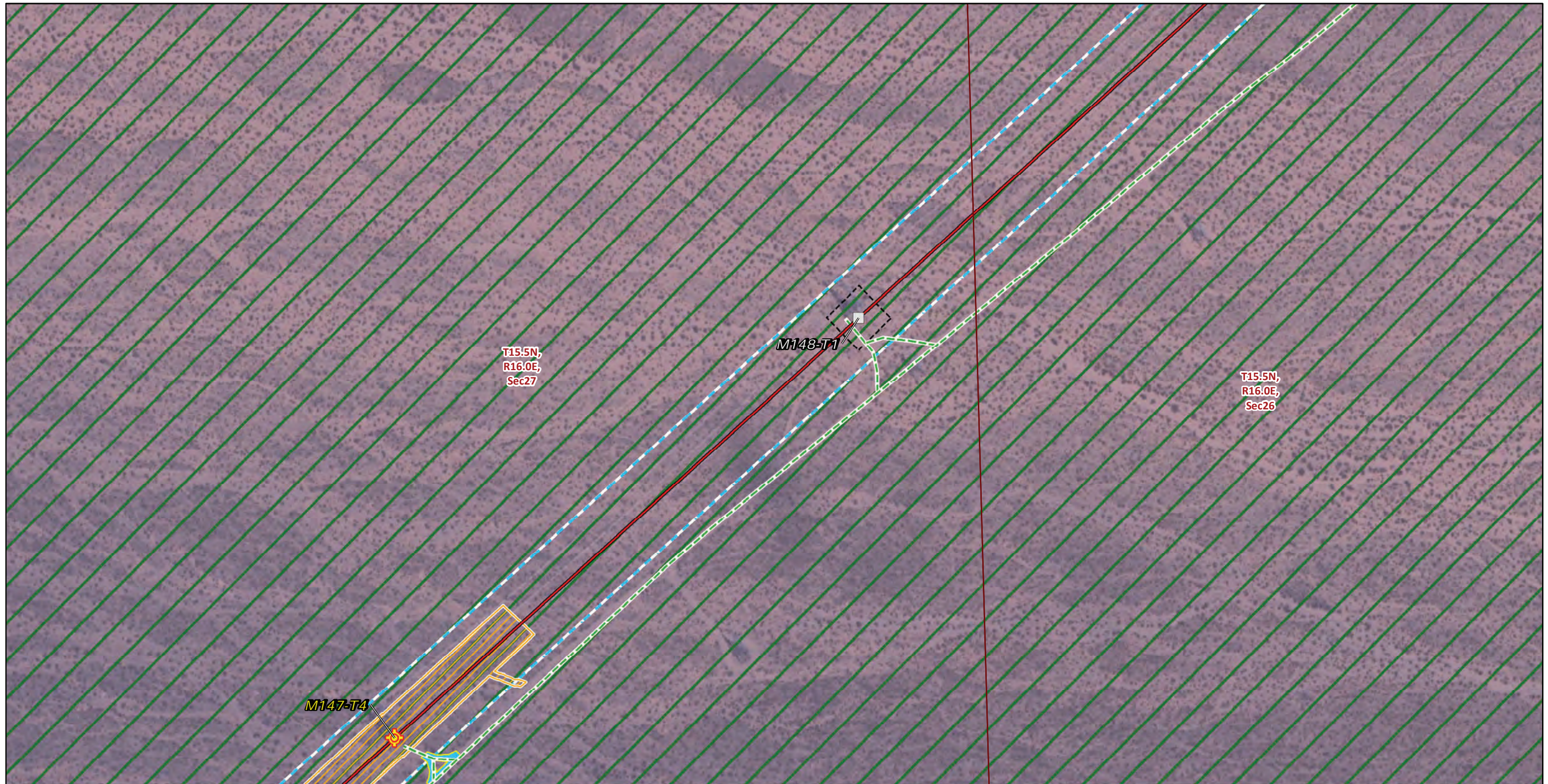
* Areas with no color fill are private land.

Source: SCE, BLM, ESRI



FIGURE 5b
Special-Status Plants and Wildlife
Segment 2
 Page 177 of 192

*Southern California Edison
 Lugo-Victorville 500 kV Transmission Line
 Remedial Action Scheme Project*



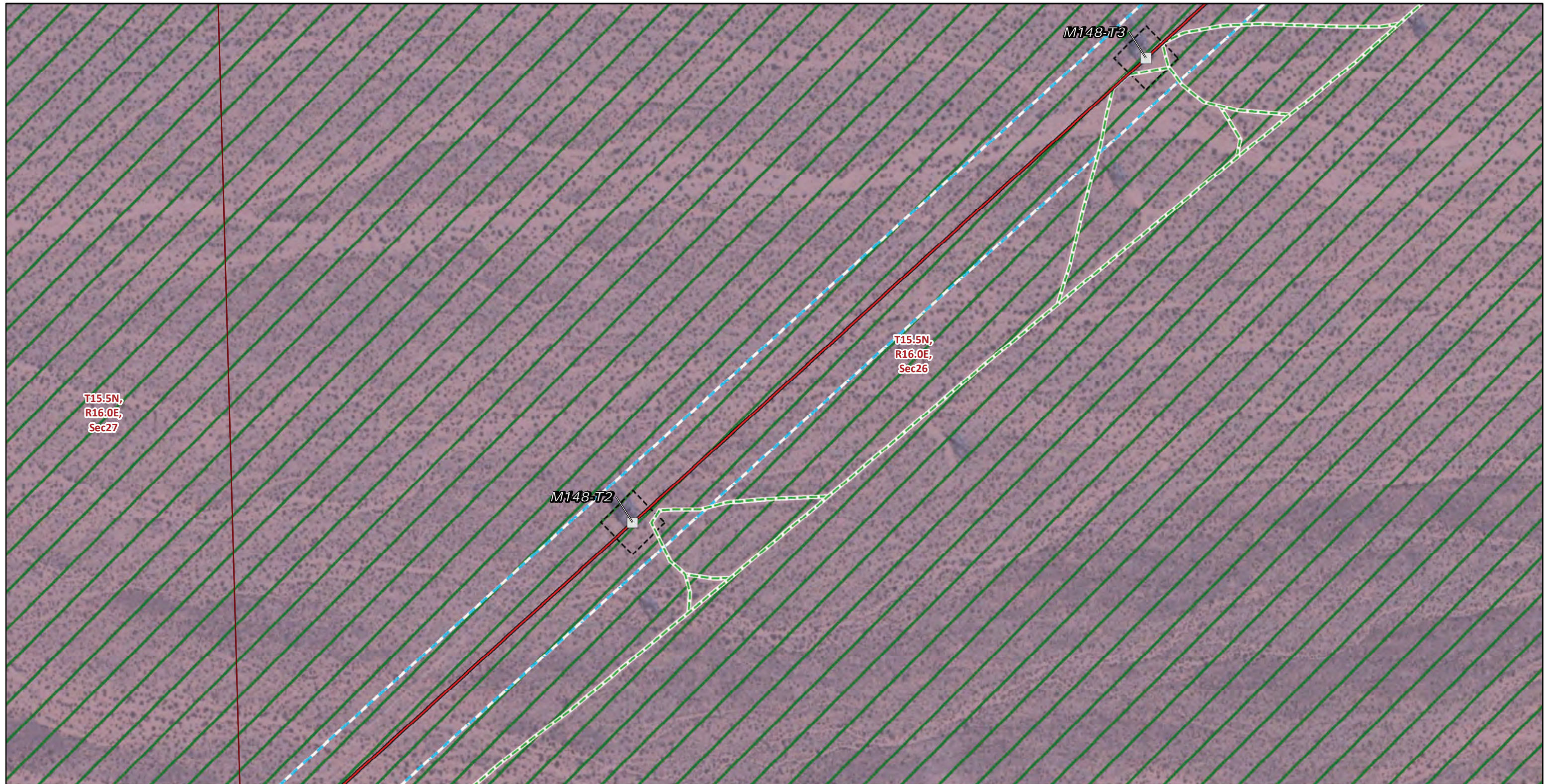
* Areas with no color fill are private land.

0 100 200
Feet
Source: SCE, BLM, ESRI

- | | |
|---|---|
| Transmission Structures | Pulling, Stringing, Tensioning Site/Structure Work Area |
| Splicing Tower Locations | Structure Work Area |
| Existing Transmission Towers | Right of Way |
| Transmission New Optical Ground Wire | USFWS Critical Habitat |
| Overhead | Desert Tortoise Critical Habitat |
| Existing Access Roads | Public Land Survey System |
| Access Road | Township, Range and Section |
| Construction Areas | Land Ownership* |
| Helicopter Landing Zone | Mojave National Preserve (NPS) |



FIGURE 5b
Special-Status Plants and Wildlife
Segment 2
Page 178 of 192



Transmission Structures

Existing Transmission Towers

Transmission New Optical Ground Wire

Overhead

Existing Access Roads

Access Road

Construction Areas

Structure Work Area

Right of Way

USFWS Critical Habitat

Desert Tortoise Critical Habitat

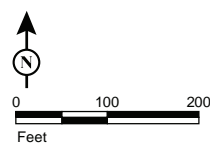
Public Land Survey System

Township, Range and Section

Land Ownership*

Mojave National Preserve (NPS)

* Areas with no color fill are private land.



Source: SCE, BLM, ESRI

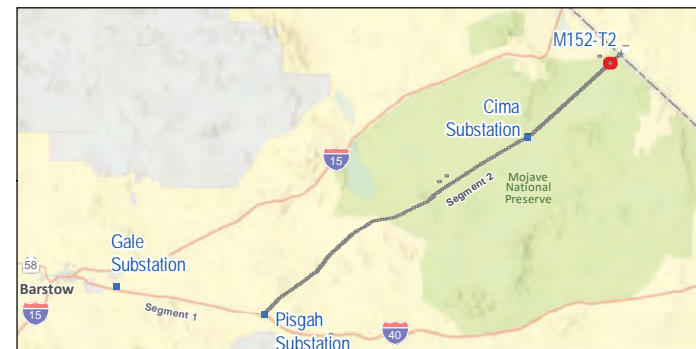
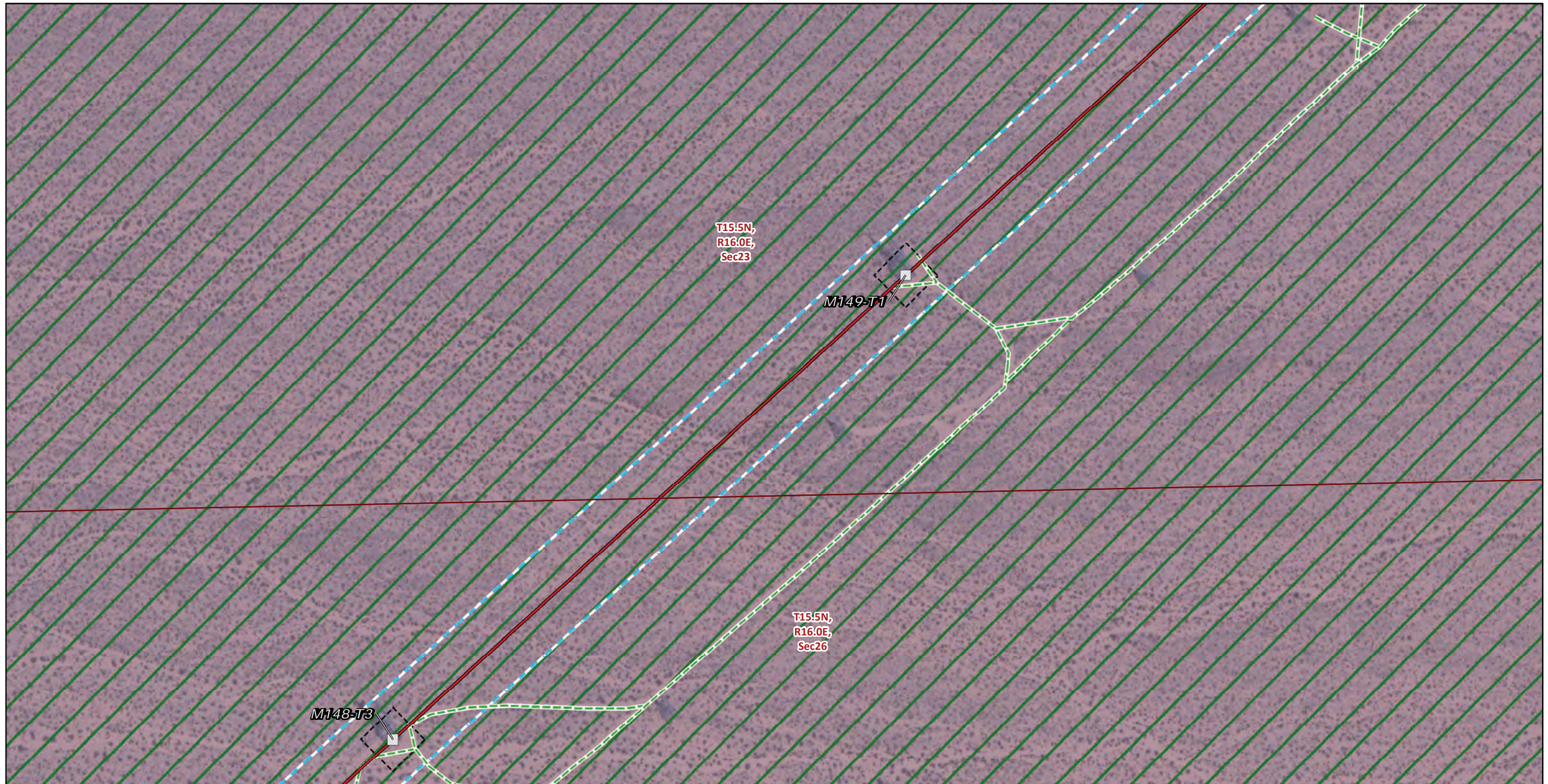


FIGURE 5b
Special-Status Plants and Wildlife
Segment 2
 Page 179 of 192

*Southern California Edison
 Lugo-Victorville 500 kV Transmission Line
 Remedial Action Scheme Project*



Transmission Structures

Existing Transmission Towers

Transmission New Optical Ground Wire

Overhead

Existing Access Roads

Access Road

Construction Areas

Structure Work Area

Right of Way

USFWS Critical Habitat

Desert Tortoise Critical Habitat

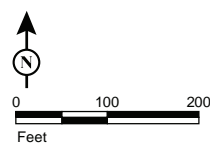
Public Land Survey System

Township, Range and Section

Land Ownership*

Mojave National Preserve (NPS)

* Areas with no color fill are private land.

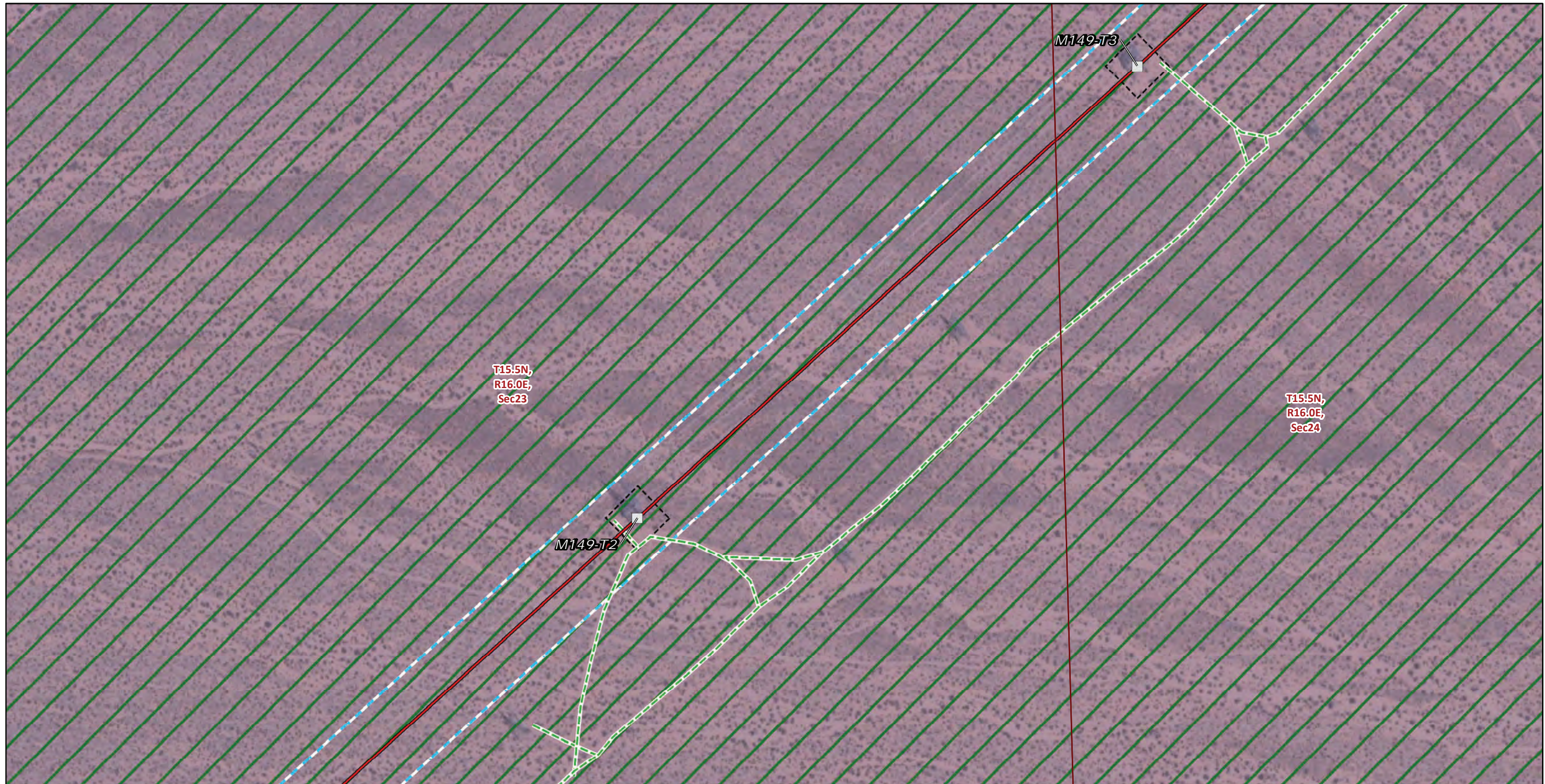


Source: SCE, BLM, ESRI



FIGURE 5b
Special-Status Plants and Wildlife
Segment 2
 Page 180 of 192

Southern California Edison
Lugo-Victorville 500 kV Transmission Line
Remedial Action Scheme Project



Transmission Structures

Existing Transmission Towers

Transmission New Optical Ground Wire

Overhead

Existing Access Roads

Access Road

Construction Areas

Structure Work Area

Right of Way

USFWS Critical Habitat

Desert Tortoise Critical Habitat

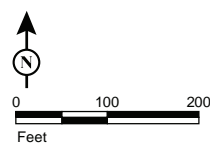
Public Land Survey System

Township, Range and Section

Land Ownership*

Mojave National Preserve (NPS)

* Areas with no color fill are private land.



Source: SCE, BLM, ESRI



FIGURE 5b
Special-Status Plants and Wildlife
Segment 2
 Page 181 of 192

*Southern California Edison
 Lugo-Victorville 500 kV Transmission Line
 Remedial Action Scheme Project*



Transmission Structures

Existing Transmission Towers

Transmission New Optical Ground Wire

Overhead

Existing Access Roads

Access Road

Construction Areas

Helicopter Landing Zone

Structure Work Area

Right of Way

USFWS Critical Habitat

Desert Tortoise Critical Habitat

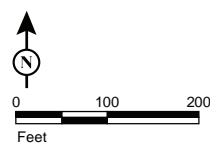
Public Land Survey System

Township, Range and Section

Land Ownership*

Mojave National Preserve (NPS)

* Areas with no color fill are private land.

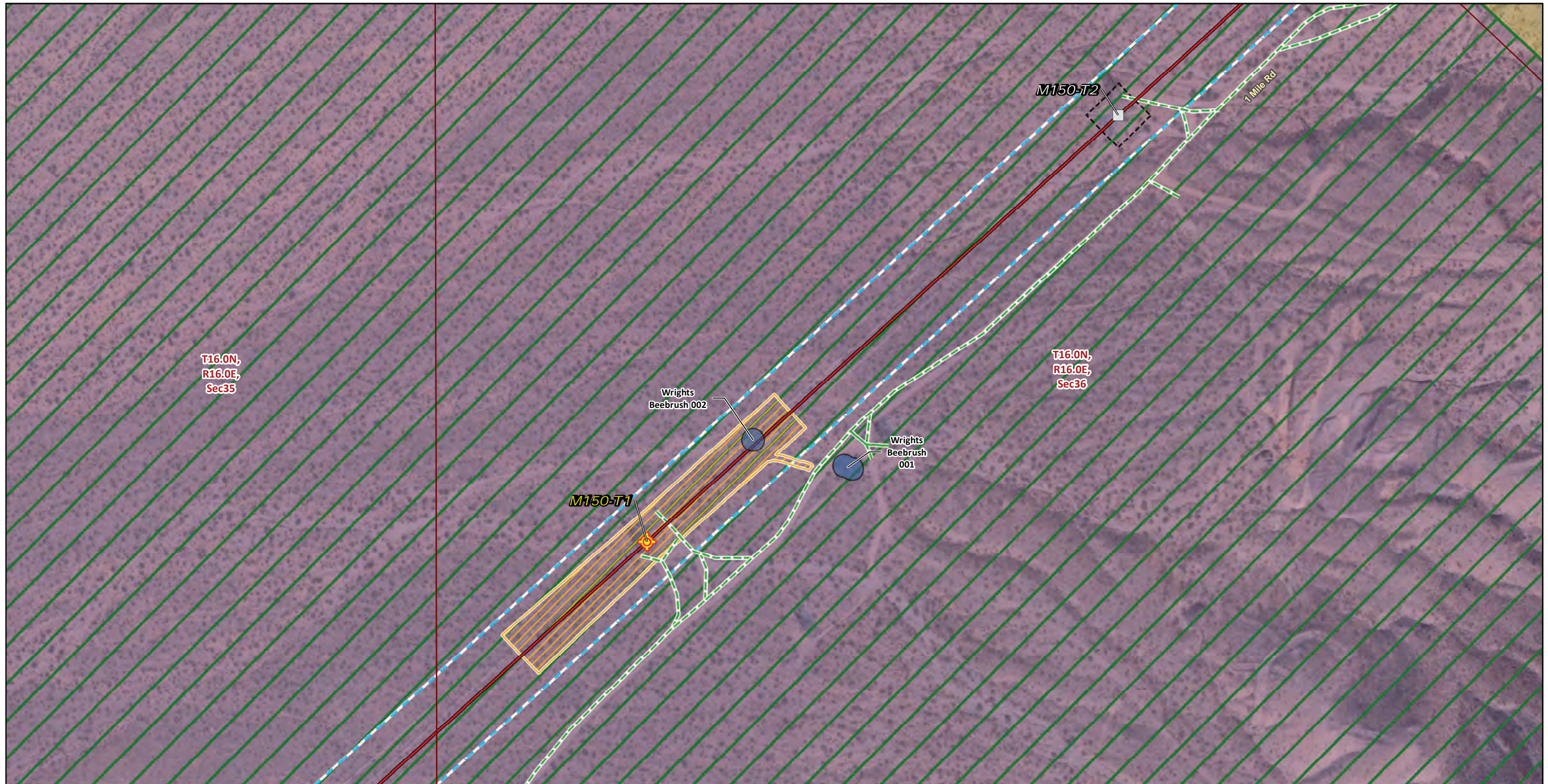


Source: SCE, BLM, ESRI



FIGURE 5b
Special-Status Plants and Wildlife
Segment 2
 Page 182 of 192

*Southern California Edison
 Lugo-Victorville 500 kV Transmission Line
 Remedial Action Scheme Project*



Transmission Structures

Splicing Tower Locations

Existing Transmission Towers

Transmission New Optical Ground Wire

Overhead

Existing Access Roads

Access Road

Construction Areas

Pulling, Stringing, Tensioning Site/Structure Work Area

Structure Work Area

Right of Way

Plant Population (Species code)

Wrights Beebrush (ALOWRI)

USFWS Critical Habitat

Desert Tortoise Critical Habitat

Public Land Survey System

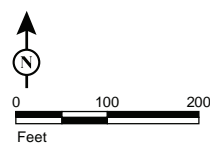
Township, Range and Section

Land Ownership*

Bureau of Land Management

Mojave National Preserve (NPS)

* Areas with no color fill are private land.



Source: SCE, BLM, ESRI

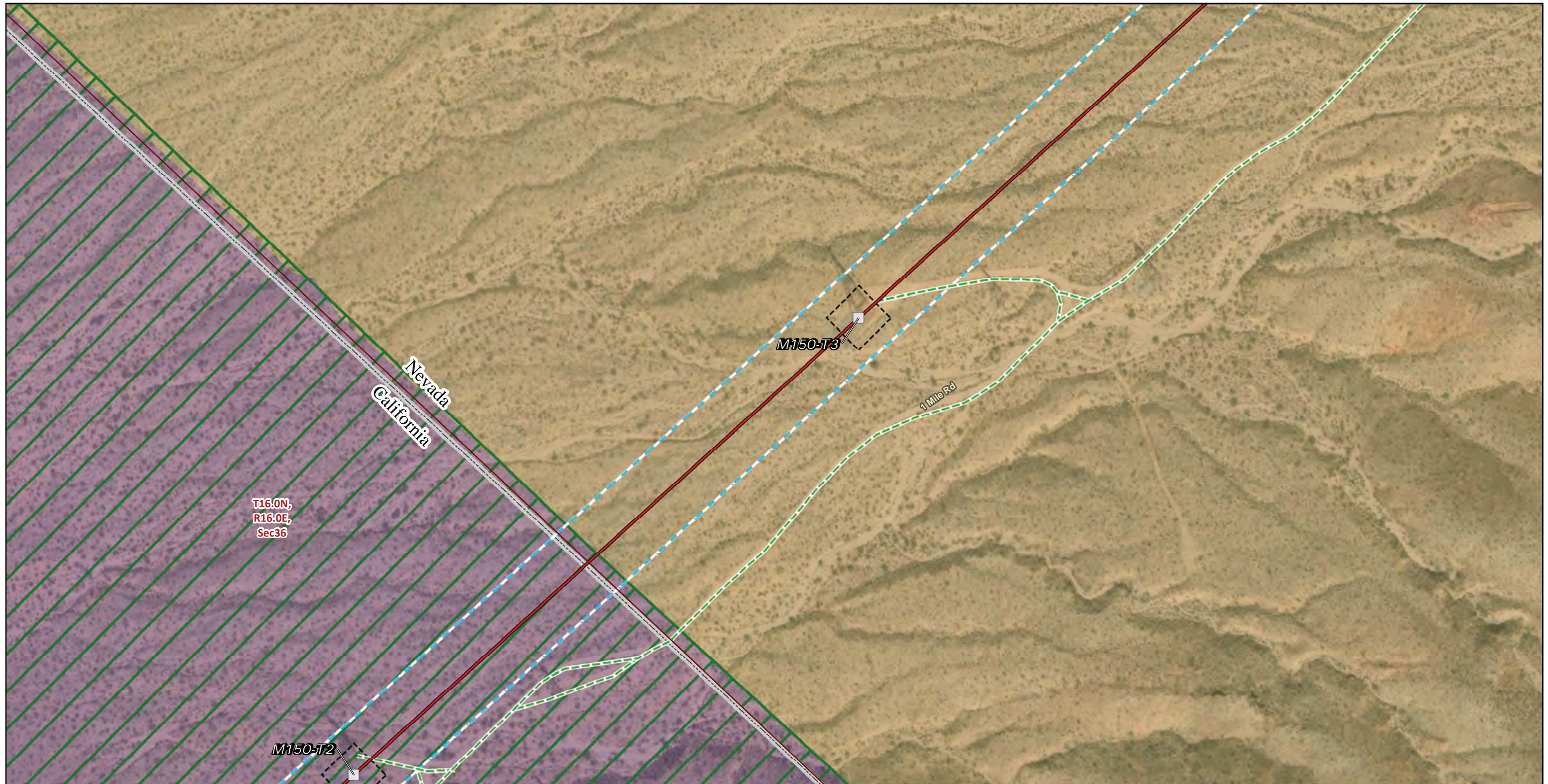


FIGURE 5b

Special-Status Plants and Wildlife Segment 2

Page 183 of 192

Southern California Edison
Lugo-Victorville 500 kV Transmission Line
Remedial Action Scheme Project



Transmission Structures

Existing Transmission Towers

Transmission New Optical Ground Wire

Overhead

Existing Access Roads

Access Road

Construction Areas

Structure Work Area

Right of Way

USFWS Critical Habitat

Desert Tortoise Critical Habitat

Public Land Survey System

Township, Range and Section

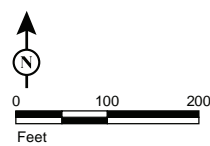
Land Ownership*

Bureau of Land Management

Mojave National Preserve (NPS)

State Boundary

* Areas with no color fill are private land.

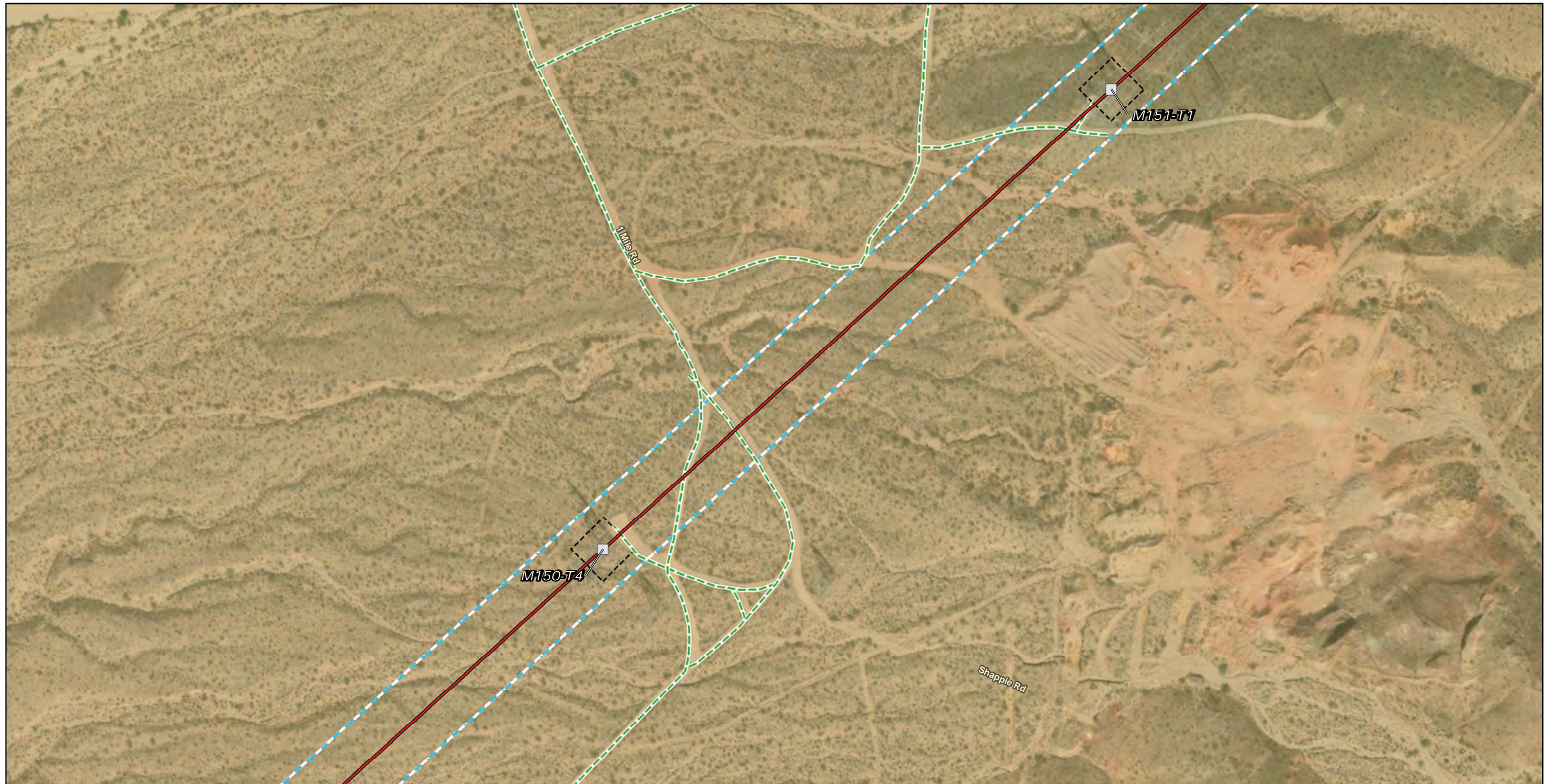


Source: SCE, BLM, ESRI



FIGURE 5b
Special-Status Plants and Wildlife
Segment 2
 Page 184 of 192

*Southern California Edison
 Lugo-Victorville 500 kV Transmission Line
 Remedial Action Scheme Project*



Transmission Structures

Existing Transmission Towers

Transmission New Optical Ground Wire

Overhead

Existing Access Roads

Access Road

Construction Areas

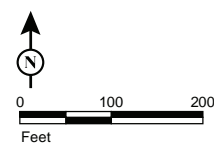
Structure Work Area

Right of Way

Land Ownership*

Bureau of Land Management

* Areas with no color fill are private land.



Source: SCE, BLM, ESRI



FIGURE 5b
Special-Status Plants and Wildlife
Segment 2
 Page 185 of 192

Southern California Edison
Lugo-Victorville 500 kV Transmission Line
Remedial Action Scheme Project



- | | |
|---|--|
| Transmission Structures | Plant Population (Species code) |
| Existing Transmission Towers | Curved-Spine Beavertail (OPUBAS) |
| Transmission New Optical Ground Wire | Land Ownership* |
| Overhead | Bureau of Land Management |
| Existing Access Roads | |
| Access Road | |
| Construction Areas | |
| Structure Work Area | |
| Right of Way | |

* Areas with no color fill are private land.

Source: SCE, BLM, ESRI



FIGURE 5b
Special-Status Plants and Wildlife
Segment 2
 Page 186 of 192



Transmission Structures

Existing Transmission Towers

Transmission New Optical Ground Wire

Overhead

Existing Access Roads

Access Road

Construction Areas

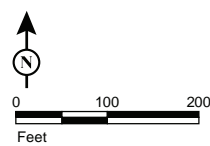
Structure Work Area

Right of Way

Land Ownership*

Bureau of Land Management

* Areas with no color fill are private land.



Source: SCE, BLM, ESRI



FIGURE 5b
Special-Status Plants and Wildlife
Segment 2
 Page 187 of 192

Southern California Edison
 Lugo-Victorville 500 kV Transmission Line
 Remedial Action Scheme Project



- | | | |
|---|--------------------------|---|
| Transmission Structures | Splicing Tower Locations | Pulling, Stringing, Tensioning Site/Structure Work Area |
| Existing Transmission Towers | Structure Work Area | Right of Way |
| Transmission New Optical Ground Wire | Overhead | Land Ownership* |
| Existing Access Roads | Access Road | Bureau of Land Management |
| Construction Areas | Guard Structure | |

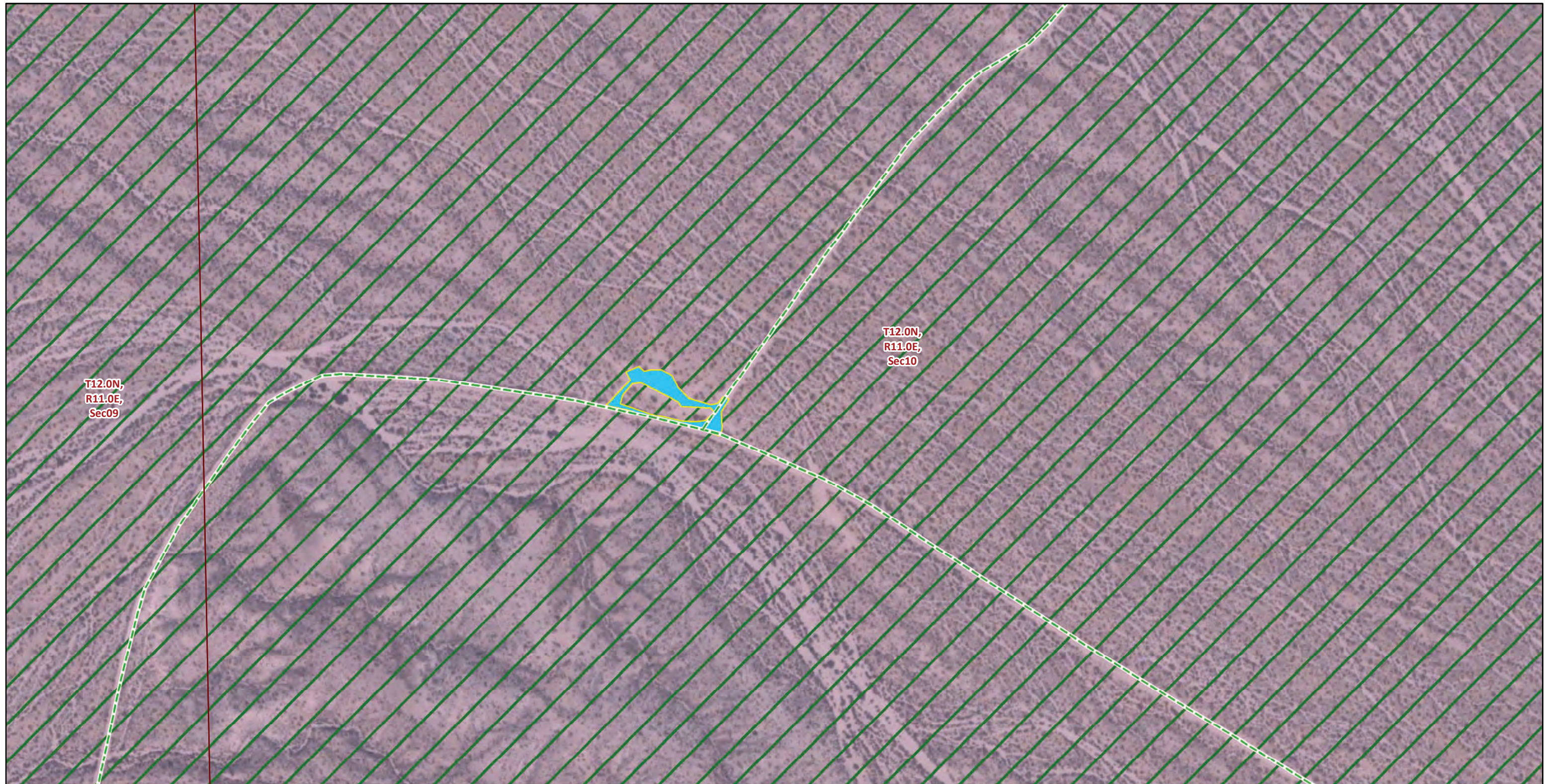
* Areas with no color fill are private land.

0 100 200
Feet

Source: SCE, BLM, ESRI



FIGURE 5b
Special-Status Plants and Wildlife
Segment 2
 Page 188 of 192



- Existing Access Roads**
- Access Road
- Construction Areas**
- Helicopter Landing Zone
- USFWS Critical Habitat**
- Desert Tortoise Critical Habitat
- Public Land Survey System**
- Township, Range and Section
- Land Ownership***
- Mojave National Preserve (NPS)

* Areas with no color fill are private land.

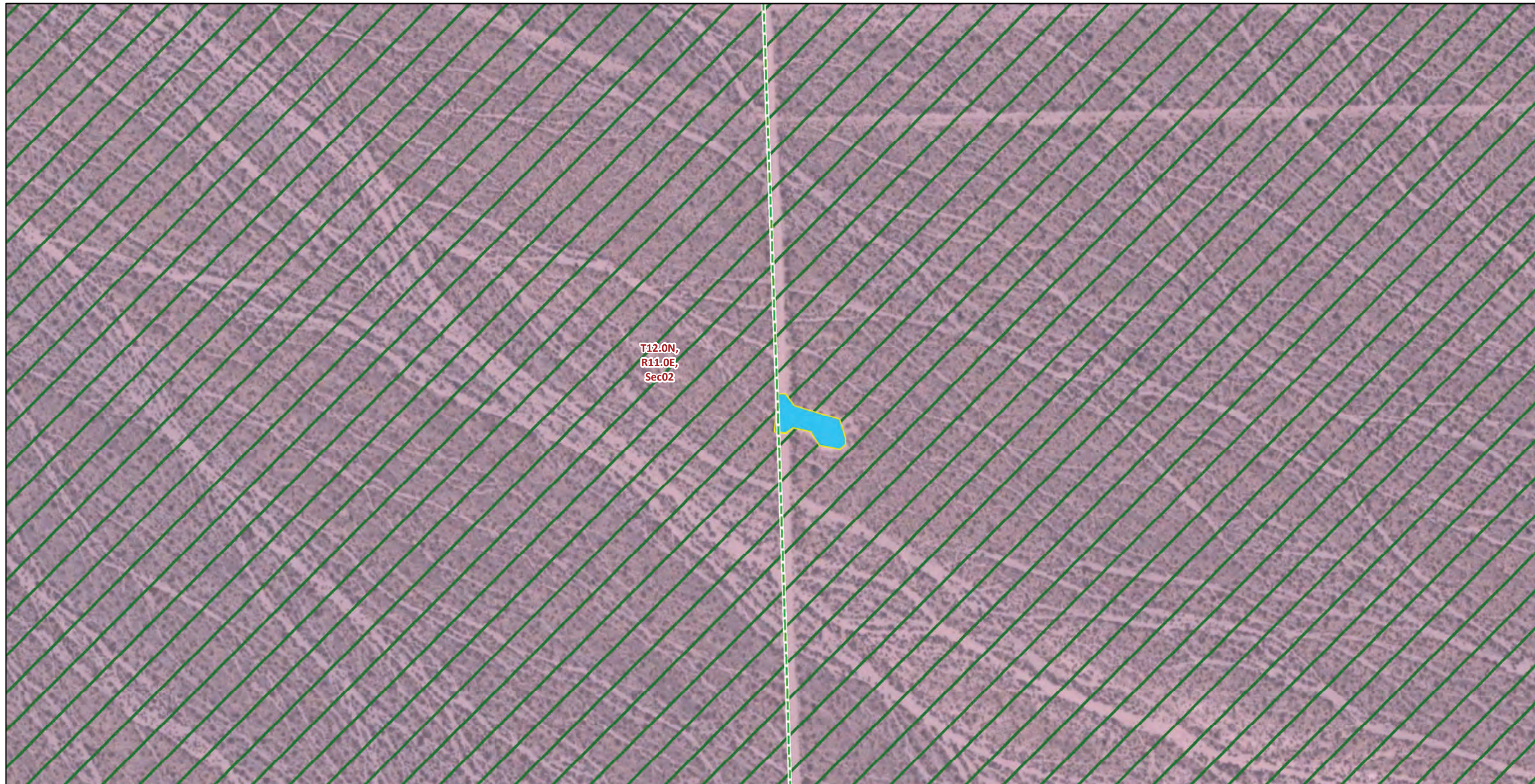
0 100 200
Feet

Source: SCE, BLM, ESRI



FIGURE 5b
**Special-Status Plants and Wildlife
 Segment 2**
 Page 189 of 192

*Southern California Edison
 Lugo-Victorville 500 kV Transmission Line
 Remedial Action Scheme Project*



* Areas with no color fill are private land.

Source: SCE, BLM, ESRI

- Existing Access Roads**
- Access Road
- Construction Areas**
- Helicopter Landing Zone
- USFWS Critical Habitat**
- Desert Tortoise Critical Habitat
- Public Land Survey System**
- Township, Range and Section
- Land Ownership***
- Mojave National Preserve (NPS)

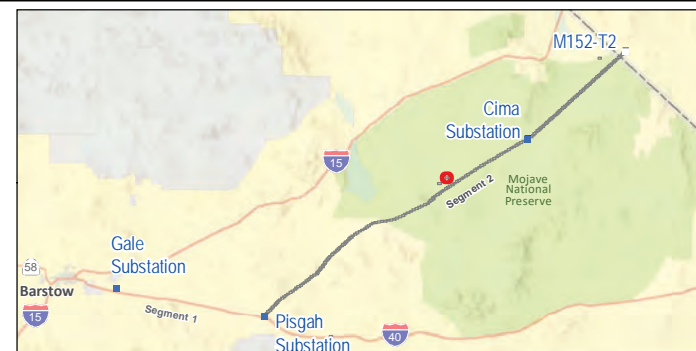
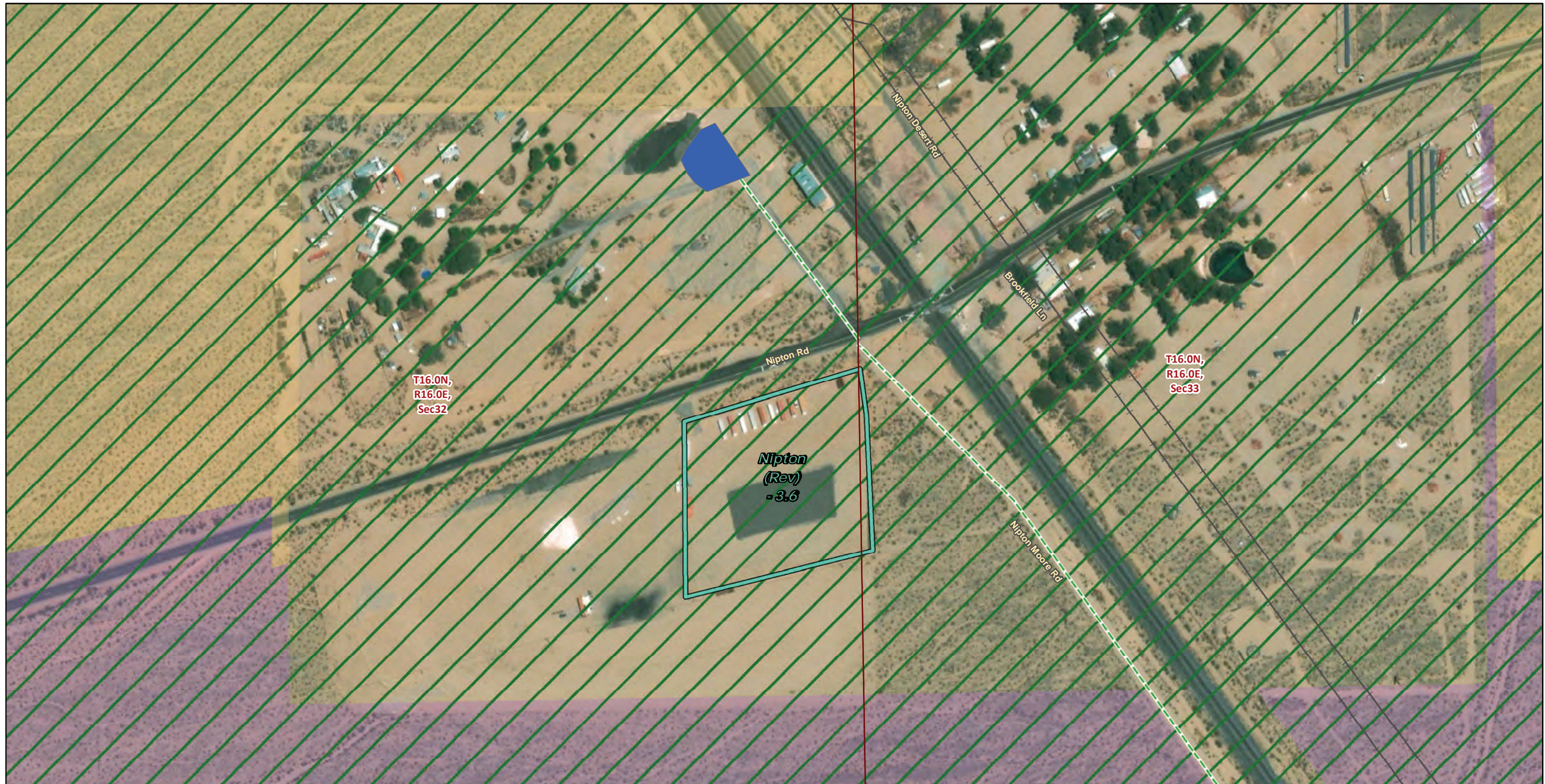


FIGURE 5b
Special-Status Plants and Wildlife
Segment 2
 Page 190 of 192

*Southern California Edison
 Lugo-Victorville 500 kV Transmission Line
 Remedial Action Scheme Project*



Material/Laydown Yards

Existing Access Roads

Access Road

Construction Areas

Water Source

USFWS Critical Habitat

Desert Tortoise Critical Habitat

Public Land Survey System

Township, Range and Section

Land Ownership*

Bureau of Land Management

Mojave National Preserve (NPS)

* Areas with no color fill are private land.

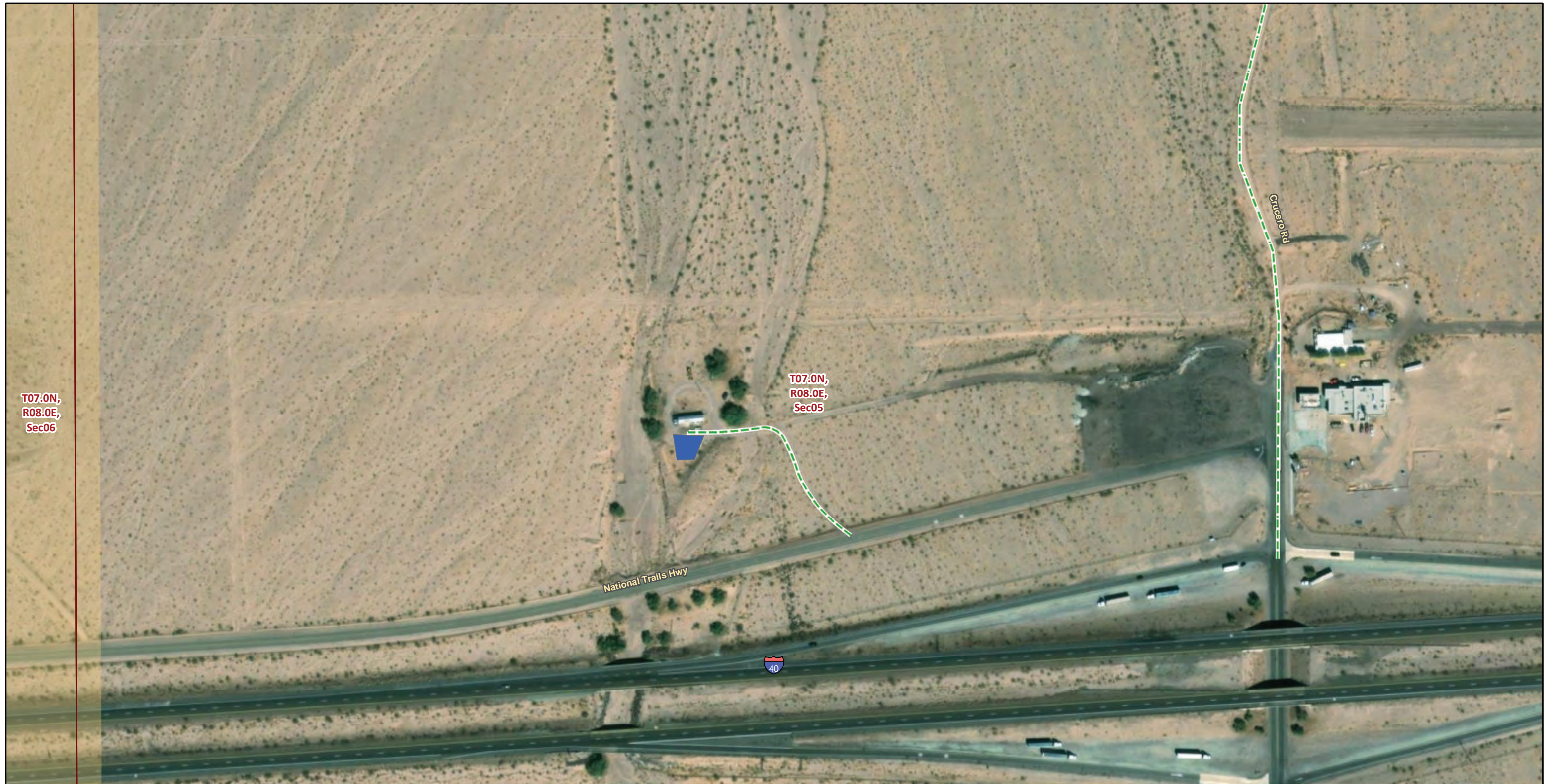


Source: SCE, BLM, ESRI

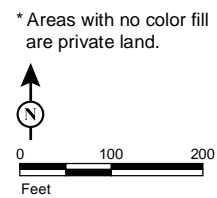


FIGURE 5b
**Special-Status Plants and Wildlife
 Segment 2**
 Page 191 of 192

*Southern California Edison
 Lugo-Victorville 500 kV Transmission Line
 Remedial Action Scheme Project*



- Existing Access Roads**
- Access Road
- Construction Areas**
- Water Source
- Public Land Survey System**
- Township, Range and Section
- Land Ownership***
- Bureau of Land Management



Source: SCE, BLM, ESRI



FIGURE 5b
Special-Status Plants and Wildlife
Segment 2
 Page 192 of 192

Southern California Edison
Lugo-Victorville 500 kV Transmission Line
Remedial Action Scheme Project