



California Public Utilities Commission



December 10, 2024

To: Interested Parties

From: Boris Sanchez, Project Manager for the Northern San Joaquin 230 kV Upgrade Project

Subject: Notice of Availability of the Draft Environmental Impact Report for the Northern San Joaquin 230 kV Transmission Line Project (SCH #2024010207)

Pacific Gas & Electric Company (PG&E) filed an Application for a Certificate of Public Convenience and Necessity Authorizing the Construction of the Northern San Joaquin 230 Kilovolt (kV) Transmission Project on September 1, 2023 (CPCN Application No. A2309001). The project is located in northeastern San Joaquin County and in the City of Lodi (see Figure 1). As the Lead Agency pursuant to the California Environmental Quality Act (CEQA), the California Public Utilities Commission (CPUC) has prepared a Draft Environmental Impact Report (EIR) to evaluate the environmental effects of project implementation. The Draft EIR is now available to review on the CPUC project website at: <https://ia.cpuc.ca.gov/environment/info/ascent/NSJTP/index.html>, at the Lodi Public Library (201 W. Locust Street, Lodi, CA 95240) and CPUC offices in Sacramento (300 Capitol Mall, Sacramento, CA) and San Francisco (505 Van Ness Avenue, San Francisco, CA).

The project would be partially constructed and operated by PG&E, an investor-owned utility regulated by CPUC, and partially constructed by Lodi Electric Utility (LEU), a publicly owned utility operated by the City of Lodi and a member of the Northern California Power Agency. The project would loop the existing overhead PG&E Brighton-Bellota 230 kV Transmission Line through an expanded PG&E Lockeford Substation and install a new overhead double-circuit 230 kV transmission line between PG&E Lockeford Substation and the proposed PG&E Thurman Switching Station adjacent to LEU's existing Fred M. Reid Industrial Substation. LEU would construct the LEU Guild Substation, a new 230/60 kV substation, between its LEU Industrial Substation and the new PG&E Thurman Switching Station in the City of Lodi. At the LEU Guild Substation, the new PG&E 230 kV transmission line would terminate, and LEU transformers would step down the power to 60 kV to connect with the LEU Industrial Substation. When the new 230 kV system is operating, the existing local PG&E 60 kV system would be reconfigured within existing alignments, including disconnecting as a source to LEU at the LEU Industrial Substation. Existing LEU and PG&E 12 kV service/feeder lines and a third-party telecommunication line within the City of Lodi would be modified during construction to allow reuse of an existing alignment, continuation of existing service, and construction of a new permanent secondary station service. As part of this project, PG&E would also update its system protection scheme at four remote-end substations (Bellota, Brighton, Lodi, and Rio Oso, which are located in Linden, Sacramento, Lodi, and Rio Oso, respectively) and install

Protecting California since 1911

The CPUC regulates privately owned electric, natural gas, telecommunications, water, railroad, rail transit, and passenger transportation companies.



@CaliforniaPUC

two 6-foot dish antennas on an existing microwave tower at the existing Clayton Hill Repeater in Contra Costa County to create a new digital microwave path allowing redundant communication into PG&E Thurman Switching Station in support of PG&E's system protection scheme.

The Draft EIR includes a description of the project and the existing environment potentially affected by the project, and an analysis of potential environmental impacts, including direct, indirect, and cumulative effects. The Draft EIR evaluates Aesthetics; Agriculture; Air Quality; Archaeological, Historical, and Tribal Cultural Resources; Biological Resources; Energy; Geology, Soils, and Mineral Resources; Greenhouse Gas Emissions; Hazards and Hazardous Materials; Hydrology and Water Quality; Land Use and Planning; Noise; Population, Employment, and Housing; Public Services and Recreation; Transportation; Utilities and Service Systems; and Wildfire. The Draft EIR describes mitigation measures which, if adopted by the CPUC, would avoid or minimize significant environmental impacts from the project. No significant and unavoidable impacts have been identified.

Comment Period: December 10, 2024, through February 7, 2025

A public meeting will be held via Zoom webinar on January 15, 2025, at 2:00 pm and 6:00 pm. Participants must register to attend the public meeting via the project website above or here:

2:00 pm Meeting:

https://us06web.zoom.us/webinar/register/WN_GbzqeS8fT_OqXIL4UZSvLg#/registration

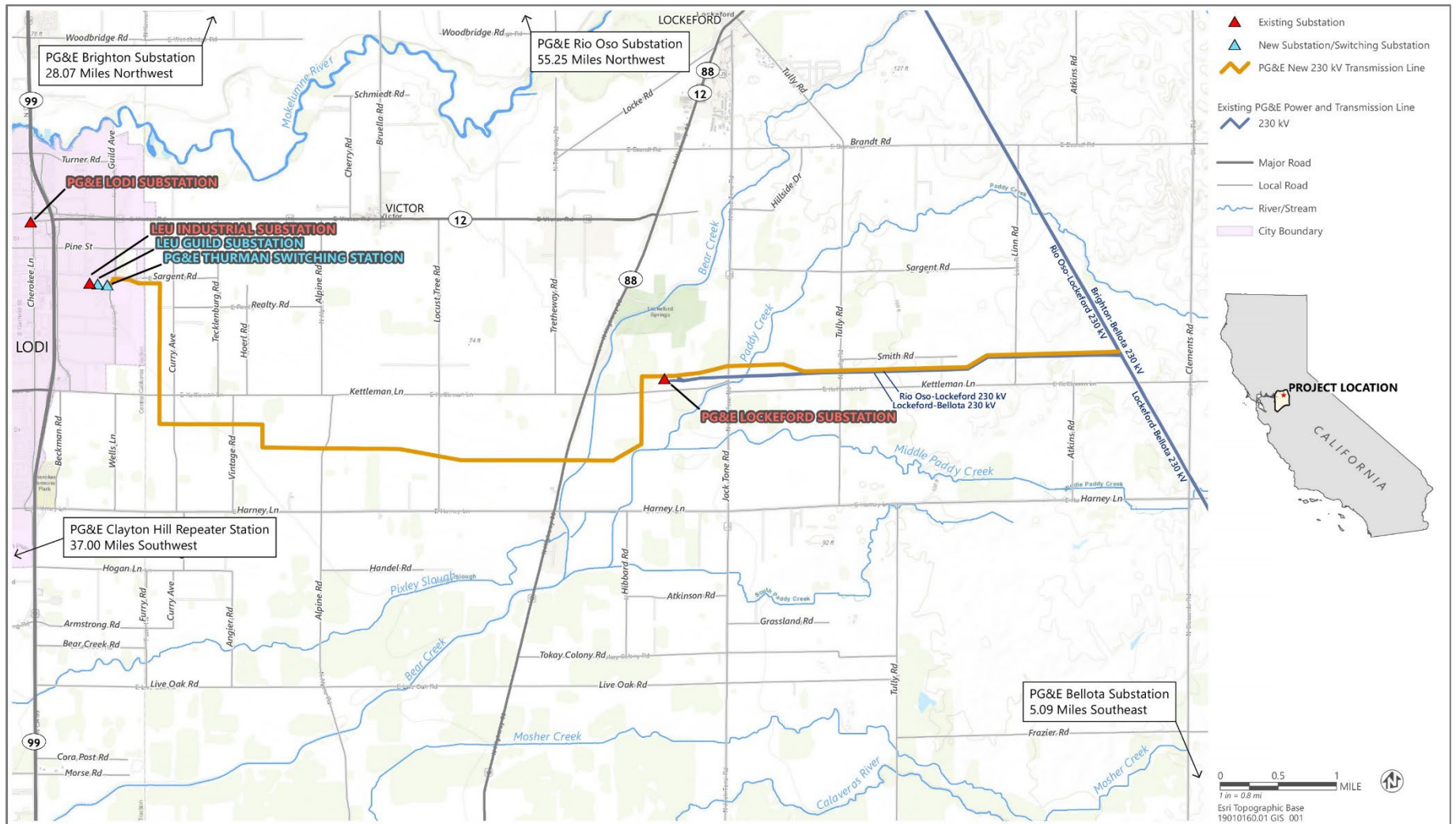
6:00 pm Meeting:

https://us06web.zoom.us/webinar/register/WN_OM4osUYBQyS_-j4dj7iz7w#/registration

Mail comments to:

Boris Sanchez, CPUC
c/o Ascent, Attn: Heather Blair
455 Capitol Mall, Suite 300
Sacramento, CA 95814

Email comments to: NSJTP@ascent.inc



Source: Adapted by Ascent based on data provided by PG&E in 2023.

Figure 1 Project Location Overview