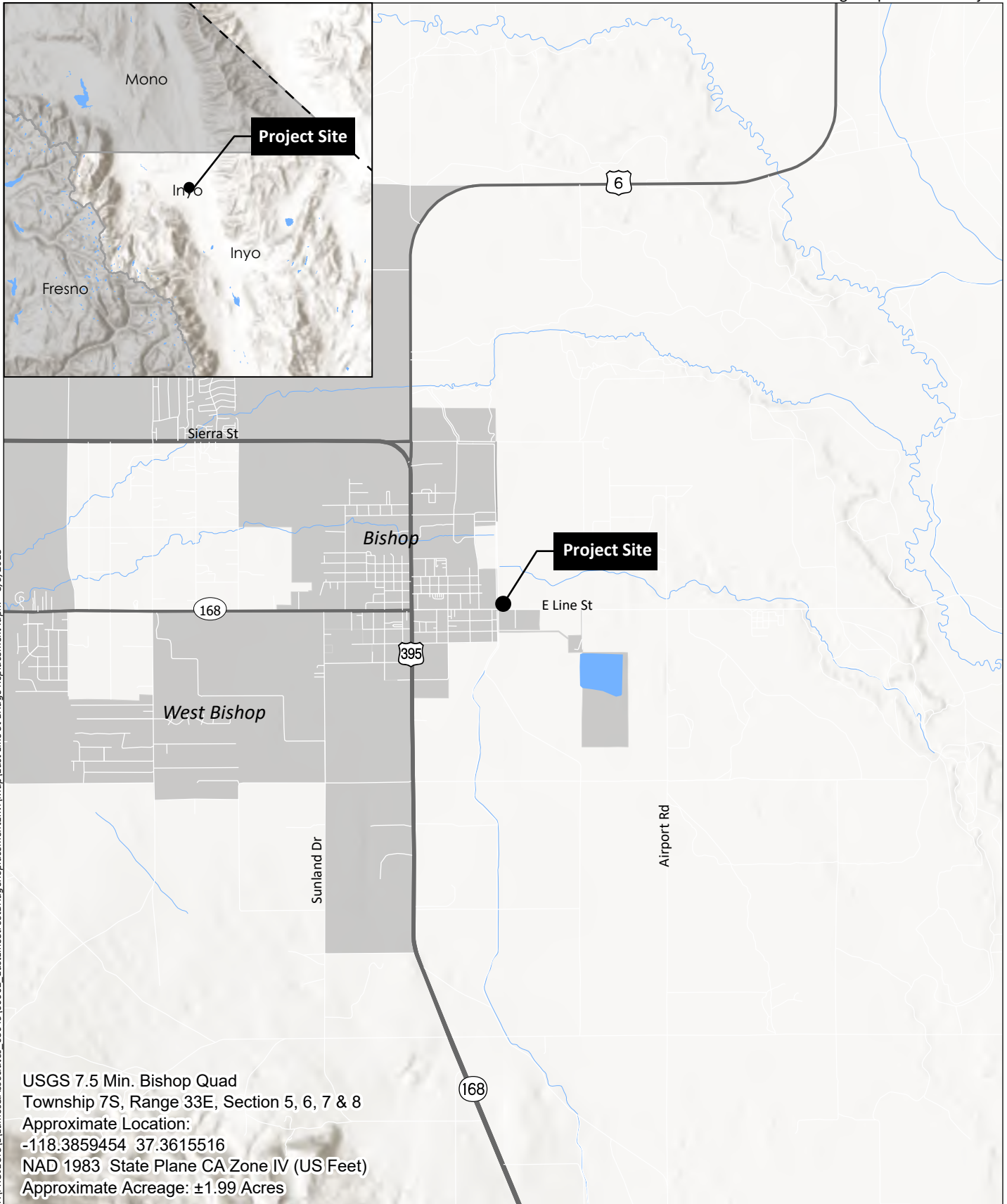


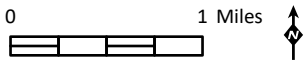
Appendix A

Figures




T:\PROJECTS\Lumos&Associates_05049\00002_EastLineStreetBridgeReplacement\Map\EastLineStBridgeReplacementEnvl\Map_8/9/2023

USGS 7.5 Min. Bishop Quad
 Township 7S, Range 33E, Section 5, 6, 7 & 8
 Approximate Location:
 -118.3859454 37.3615516
 NAD 1983 State Plane CA Zone IV (US Feet)
 Approximate Acreage: ±1.99 Acres



Source: Base Map Layers (Esri, USGS, NGA, NASA)

Legend

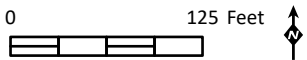
 Study Area - 1.99 Acres



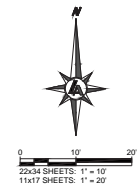
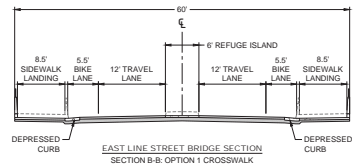
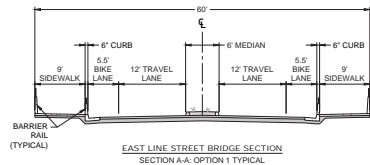
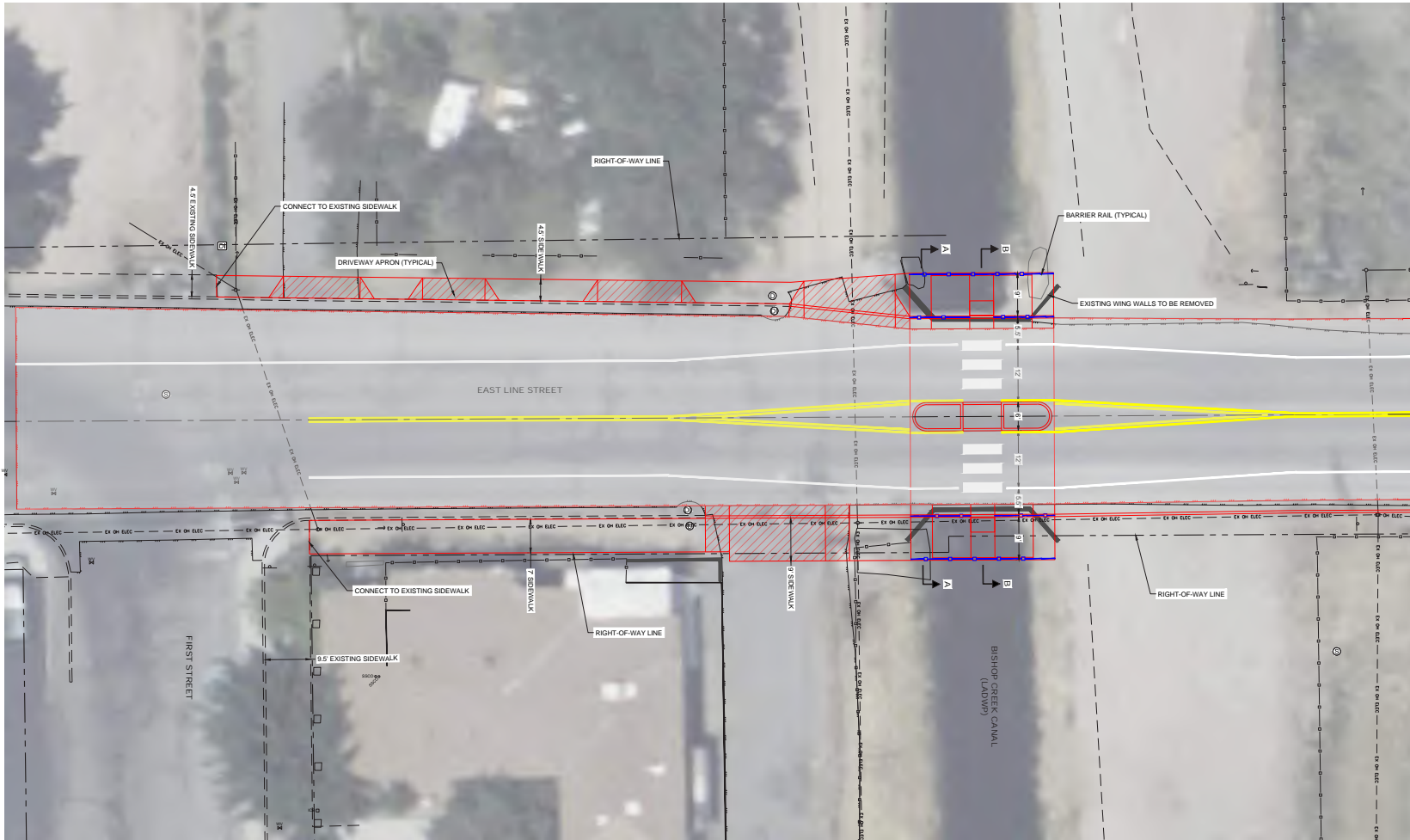
E Line St

T:\PROJECTS\Lumos&Associates_05049\00002_EastLineStreetBridgeReplacement\Map\EastLineStBridgeReplacement.aprx 8/25/2023

Source: Aerial (NearMap, 7/1/2023)



T:\PROJECTS\Lummos&Associates_05049\00002_EastLineStreetBridgeReplacementEnvr\Map\SitePlan_20230929.indd



LUMOS & ASSOCIATES
 800 SANDHILL ROAD, SUITE 100
 RENO, NV 89521
 TEL: 775.827.8111
 WWW.LUMOSINC.COM
 INFO@LUMOSINC.COM

LUMOS & ASSOCIATES, INC. THIS DRAWING IS THE PROPERTY OF LUMOS & ASSOCIATES, INC. USE OR REPRODUCTION OF THIS DRAWING, IN WHOLE OR IN PART, WITHOUT THE WRITTEN PERMISSION OF LUMOS & ASSOCIATES, INC. IS STRICTLY PROHIBITED. THIS DRAWING MUST BE USED FOR ANY PROJECT OTHER THAN THE PROJECT FOR WHICH IT WAS PREPARED.

CITY OF BISHOP
EAST LINE STREET BRIDGE REPLACEMENT ALTERNATIVES ANALYSIS
WEST SIDEWALK & BRIDGE OPTION 1
 BISHOP INYO CALIFORNIA

REV.	DATE	DESCRIPTION	BY

PRELIMINARY
 NOT FOR CONSTRUCTION

1" = 1" ON ORIGINAL DRAWING
 IF NOT ONE INCH ON THIS SHEET, ADJUST SCALES ACCORDINGLY.

EX 1
 DRAWN BY: JTK
 DESIGNED BY: JTK
 CHECKED BY: CAB
 JOB NO.: 10568.000

Source: Lumos & Associates, 2023