



**APPENDIX B**

**Biological Resources**




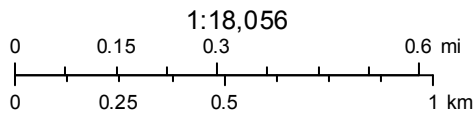
**APPENDIX B.1**

**CNDDDB Data**

# Map of Project Area

## California Natural Diversity Database (CNDDDB) Commercial [ds85]

-  Plant (80m)
-  Plant (specific)
-  Plant (non-specific)
-  Plant (circular)
-  Animal (80m)
-  Animal (specific)
-  Animal (non-specific)
-  Animal (circular)
-  Terrestrial Comm. (80m)
-  Terrestrial Comm. (specific)
-  Terrestrial Comm. (non-specific)
-  Terrestrial Comm. (circular)
-  Aquatic Comm. (80m)
-  Aquatic Comm. (specific)
-  Aquatic Comm. (non-specific)
-  Aquatic Comm. (circular)
-  Multiple (80m)
-  Multiple (specific)
-  Multiple (non-specific)
-  Multiple (circular)
-  Sensitive EO's (Commercial only)



September 22, 2022


Sources: Esri, HERE, Garmin, Intermap, increment P Corp, GEBCO, USGS, FAO, NPS, NRCAN, GeoBase, IGN, Kadaster NL, Ordnance Survey, Esri

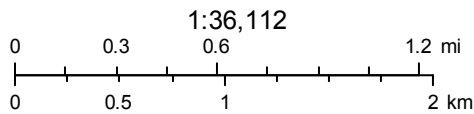
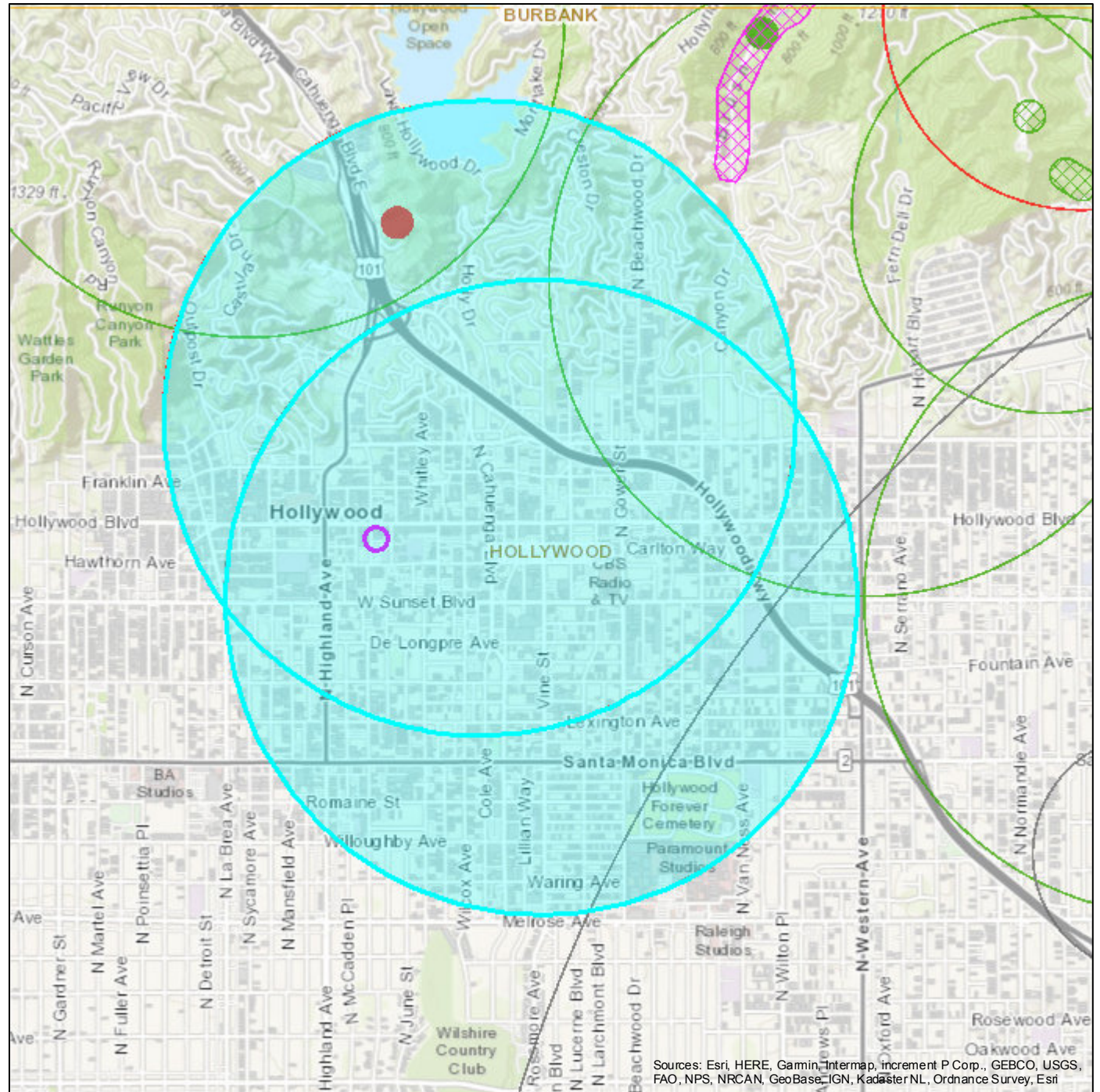
Scientific_Name	Common_Name	Element_Code	Occ_Number	MAPNDX	EONDX	Key_Quad_Code	Key_Quad_Name	Key_County_Code	Accuracy	Presence	Occ_Type	Occ_Rank	Sensitive	Site_Date	Elm_Date	Owner_Management	Federal_Status	State_Status	Global_Rank	State_Rank	Rare_Plant_Rank	CDFW_Status	Other_Status	Symbology	Taxon_Group
Eumops perotis californicus	western mastiff bat	AMACD02011	62	66305	66391	3411813	Hollywood	LAX	1 mile	Presumed Extant	Natural/Native occurrence	Unknown	N	19910403	19910403	UNKNOWN	None	None	G4G5T4	S3S4	-	SSC	BLM_S	804	Mammals
Lasiurus cinereus	hoary bat	AMACC05030	49	66305	68808	3411813	Hollywood	LAX	1 mile	Presumed Extant	Natural/Native occurrence	Unknown	N	19280501	19280501	UNKNOWN	None	None	G3G4	S4	-	-	IUCN_LC	804	Mammals
Pseudognaphalium leucocephalum	white rabbit-tobacco	PDAST440C0	11	66305	70819	3411813	Hollywood	LAX	1 mile	Presumed Extant	Natural/Native occurrence	Unknown	N	1907XXXX	1907XXXX	UNKNOWN	None	None	G4	S2	2B.2	-	-	804	Dicots
Symphyotrichum defoliatum	San Bernardino aster	PDASTE80C0	78	66305	79630	3411813	Hollywood	LAX	1 mile	Extirpated	Natural/Native occurrence	None	N	1893XXXX	1893XXXX	UNKNOWN	None	None	G2	S2	1B.2	-	SB_CalBG/RSABG; SB_CRES; USFS_S	804	Dicots
Vireo bellii pusillus	least Bell's vireo	ABPBW01114	555	91980	93054	3411813	Hollywood	LAX	1 mile	Possibly Extirpated	Natural/Native occurrence	None	N	18930612	18930612	UNKNOWN	Endangered	Endangered	G5T2	S2	-	-	NABCI_YWL	204	Birds
Anniella stebbinsi	Southern California legless lizard	ARACC01060	73	66305	110975	3411813	Hollywood	LAX	1 mile	Presumed Extant	Natural/Native occurrence	Poor	N	193904XX	193904XX	UNKNOWN	None	None	G3	S3	-	SSC	USFS_S	804	Reptiles



# Map of Project Area

## California Natural Diversity Database (CNDDDB) Commercial [ds85]

-  Plant (80m)
-  Plant (specific)
-  Plant (non-specific)
-  Plant (circular)
-  Animal (80m)
-  Animal (specific)
-  Animal (non-specific)
-  Animal (circular)
-  Terrestrial Comm. (80m)
-  Terrestrial Comm. (specific)
-  Terrestrial Comm. (non-specific)
-  Terrestrial Comm. (circular)
-  Aquatic Comm. (80m)
-  Aquatic Comm. (specific)
-  Aquatic Comm. (non-specific)
-  Aquatic Comm. (circular)
-  Multiple (80m)
-  Multiple (specific)
-  Multiple (non-specific)
-  Multiple (circular)
-  Sensitive EO's (Commercial only)



September 22, 2022

Sources: Esri, HERE, Garmin, Intermap, increment P Corp., GEBCO, USGS, FAO, NPS, NRCAN, GeoBase, IGN, Kadaster NL, Ordnance Survey, Esri



**APPENDIX B.2**

**Tree Report**



# TREE REPORT

## **PREPARED FOR**

J & J Hollywood, LLC  
Hollywood Central Market  
Los Angeles CA, 90028

## **PROPERTY**

1610 - 1638 N Las Palmas, 1623 - 1645 N Cherokee, 6626 - 6636 W Hollywood  
1638 - 1644 N Cherokee, Los Angeles CA 90028

## **CONTACT**

Faris Simon  
J&J Property Company LLC - 1618 N. Las Palmas Ave, Los Angeles CA 90028  
209-769-8427  
[faris@jandjpropert](mailto:faris@jandjpropert)

March 20, 2022

## **PREPARED BY**

LISA SMITH, THE TREE RESOURCE ®  
REGISTERED CONSULTING ARBORIST #464  
ISA BOARD CERTIFIED MASTER ARBORIST #WE3782B  
ISA TREE RISK ASSESSOR QUALIFIED - INSTRUCTOR  
MEMBER OF AMERICAN SOCIETY OF CONSULTING ARBORISTS  
P.O. BOX 49314, LOS ANGELES, CA 90049  
T 310-663-2290 E [lisa@thetreeresource.com](mailto:lisa@thetreeresource.com)

## TABLE OF CONTENTS

SUMMARY	3
ASSIGNMENT	5
LIMITATIONS	5
TREE CHARACTERISTICS AND SITE CONDITIONS	5
IMPACT ANALYSIS AND SPECIFIC RECOMMENDATIONS	5
APPENDIX A –TREE LOCATION MAP	6
APPENDIX B - PHOTOGRAPHS	7
APPENDIX C – SUMMARY OF FIELD INSPECTION	11
APPENDIX D – SUMMARY OF DATA	12
New Tree Planting	13
Tree Maintenance and Pruning	15
Diseases and Insects, Grade Changes & Inspection	17
ASSUMPTIONS AND LIMITING CONDITIONS	18



# TREE REPORT

1610 - 1638 N Las Palmas, 1623 - 1645 N Cherokee, 6626 - 6636 W Hollywood  
 1638 - 1644 N Cherokee, Los Angeles, CA 90028

## SUMMARY

PROJECT OVERVIEW	
Site Address	1610 - 1638 N Las Palmas, 1623 - 1645 N Cherokee, 6626 - 6636 W Hollywood 1638 - 1644 N Cherokee, Los Angeles, CA 90028
Location and/or Specific Plan	Hollywood
Project Description	multi-family housing
Number of Protected Trees on Site	0
Number of Recommended Removals	0

This Tree Report was prepared at the request of the property owner, J & J Hollywood, LLC, who is preparing to build multi-family housing on this property. The subject property is 1,083,163 square feet and is located in the Hollywood area of Los Angeles.

## PROTECTED TREES, URBAN FORESTRY DIVISION

This property is under the jurisdiction of the City of Los Angeles and guided by the Native Tree Protection Ordinance No. 186873. **Protected Trees** are defined by this ordinance as oaks (*Quercus* sp.) indigenous to California but excluding the scrub oak (*Quercus dumosa*); Southern California black walnut (*Juglans californica* var. *californica*); Western sycamore (*Platanus racemosa*) and California bay laurel (*Umbellularia californica*) trees with a diameter at breast height (DBH) of four inches (4") or greater. **Protected Shrubs** are defined as Mexican elderberry (*Sambucus mexicana*); Toyon (*Heteromeles arbutifolia*) which measure four inches or more in cumulative diameter, four and one-half feet above the ground level at the base of the shrub.

**There are NO trees or shrubs on this property that would be considered protected within the City of Los Angeles Native Tree Protection Ordinance.**

## NEIGHBOR TREES

I have also inspected the neighboring properties to confirm there are no protected tree species that are adjacent to the construction zone, or in areas of impact.

## CITY OF LOS ANGELES STREET TREES, URBAN FORESTRY DIVISION

There are seven (7) trees located in the parkway perimeter at 6636 Hollywood that are considered **City of Los Angeles Street Trees**. These trees will receive no impact and will be retained and protected in place.

## NON-PROTECTED SIGNIFICANT TREES, DEPARTMENT OF CITY PLANNING

The Department of City Planning requires the identification of the location, size, type and condition of all existing trees on the site with a DBH of 8 inches (8") or greater. These trees will be identified as **Non-Protected Significant Trees**.

At this time, I observed three (3) **Non-Protected Significant Trees** on the property. Two of these trees will receive impact from the proposed construction and will be removed. One tree will be retained.

## ASSIGNMENT

The Assignment included:

- Field Observation and Inventory of Trees on Site
- Evaluation of potential construction impacts
- Photographs of the subject trees are included in Appendix B
- Matrix of proposed tree removals and trees to remain

## LIMITS OF THE ASSIGNMENT

The field inspection was a visual, grade level tree assessment. No special tools or equipment were used. No tree risk assessments were performed. My site examination and the information in this report is limited to the date and time the inspection occurred. The information in this report is limited to the condition of the trees at the time of my inspection.

## TREE CHARACTERISTICS AND SITE CONDITIONS

Detailed information with respect to size, condition, species and recommendations are included in the Summary of Field Inspections in Appendix C. The trees are numbered on the Tree Location Map in Appendix A.

## IMPACT ANALYSIS AND SPECIFIC RECOMMENDATIONS

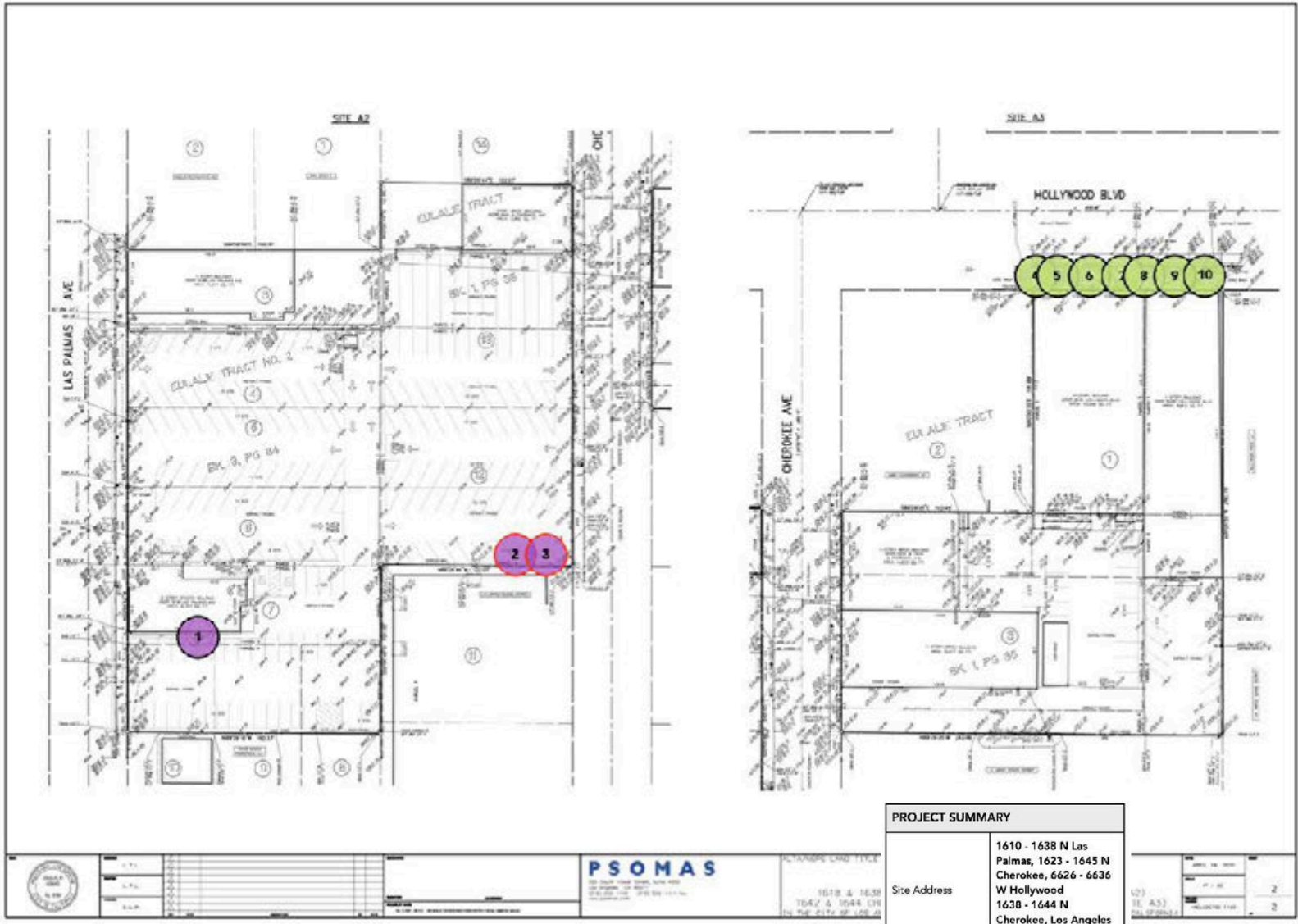
### **NON-PROTECTED TREES**

Two Non-Protected Significant Ficus benjamina trees #2 and #3 are in poor condition, will be impacted by construction and will be removed. One non-protected tree #1 will be retained.

### **STREET TREES**

Seven street trees at 6636 Hollywood #4-10 will receive no impact and will be retained.

# APPENDIX A - TREE LOCATION MAP, REDUCED



PROJECT SUMMARY	
Site Address	1610 - 1638 N Las Palmas, 1623 - 1645 N Cherokee, 6626 - 6636 W Hollywood 1638 - 1644 N Cherokee, Los Angeles CA 90028
Location	Hollywood
Project Description	Multi family housing

KEY	
	Non-Protected Significant Tree
	Street tree
	Tree recommended for removal

SUMM	
NON-SIGNIFICANT TREES, 8" DBH + REPLACED 1:1	

1610 - 1638 N Las Palmas, 1623 - 1645 N Cherokee, 6626 - 6636 W Hollywood, 1638 - 1644 N Cherokee

## APPENDIX B - PHOTOGRAPHS



**PHOTO 1** - Shows (2) Ficus benjamina trees #2 and #3 that are in poor condition because of previous topping. These non-protected trees will be impacted by construction and will be removed.



## APPENDIX B - PHOTOGRAPHS



**PHOTO 2** - These adjacent buildings will be retained and they are not part of this project there are no protected trees located on any of the adjacent properties



## APPENDIX B - PHOTOGRAPHS



**PHOTO 3** - 6628 & 6636 Hollywood Blvd.

All street trees will be retained and protected in place.

## APPENDIX B - PHOTOGRAPHS



**PHOTO 4** - 6636 Hollywood. All street trees will be retained and protected in place.

1610 - 1638 N Las Palmas, 1623 - 1645 N Cherokee,  
6626 - 6636 W Hollywood, 1638 - 1644 N Cherokee

## APPENDIX C - SUMMARY OF FIELD INSPECTION

Rating Code: A = Excellent, B = Good, C = Fair, D = Poor, E = Nearly Dead, F = Dead

Tree #	Species	Status	DBH (")	Height (')	Spread (')	Summary of Condition	Retain or Remove
1	Chinese Elm <i>Ulmus parvifolia</i>	Non-Protected	20	35	25	C	Retain
2	Weeping Fig <i>Ficus benjamina</i>	Non-Protected	20	20	10	D	Remove
3	Weeping Fig <i>Ficus benjamina</i>	Non-Protected	20	20	10	D	Remove
4	Mexican Fan Palm <i>Washingtonia robusta</i>	Street	12	60	10	C	Retain
5	Jacaranda <i>Jacaranda mimosifolia</i>	Street	10	25	10	C-D	Retain
6	Jacaranda <i>Jacaranda mimosifolia</i>	Street	12	30	15	C	Retain
7	Mexican Fan Palm <i>Washingtonia robusta</i>	Street	12	60	10	C	Retain
8	Jacaranda <i>Jacaranda mimosifolia</i>	Street	14	35	15	C	Retain
9	Jacaranda <i>Jacaranda mimosifolia</i>	Street	12	30	15	C	Retain
10	Mexican Fan Palm <i>Washingtonia robusta</i>	Street	12	60	10	C	Retain

## APPENDIX D - SUMMARY OF DATA

**Table 2. Schedule of Proposed Removals**

Tree #	Species	Status	Condition	RECOMMENDATION	
				Retain or Remove	Reason for Removal
2	Weeping Fig Ficus benjamina	Non-Protected	Fair	Remove	Construction Impact
3	Weeping Fig Ficus benjamina	Non-Protected	Fair	Remove	Construction Impact

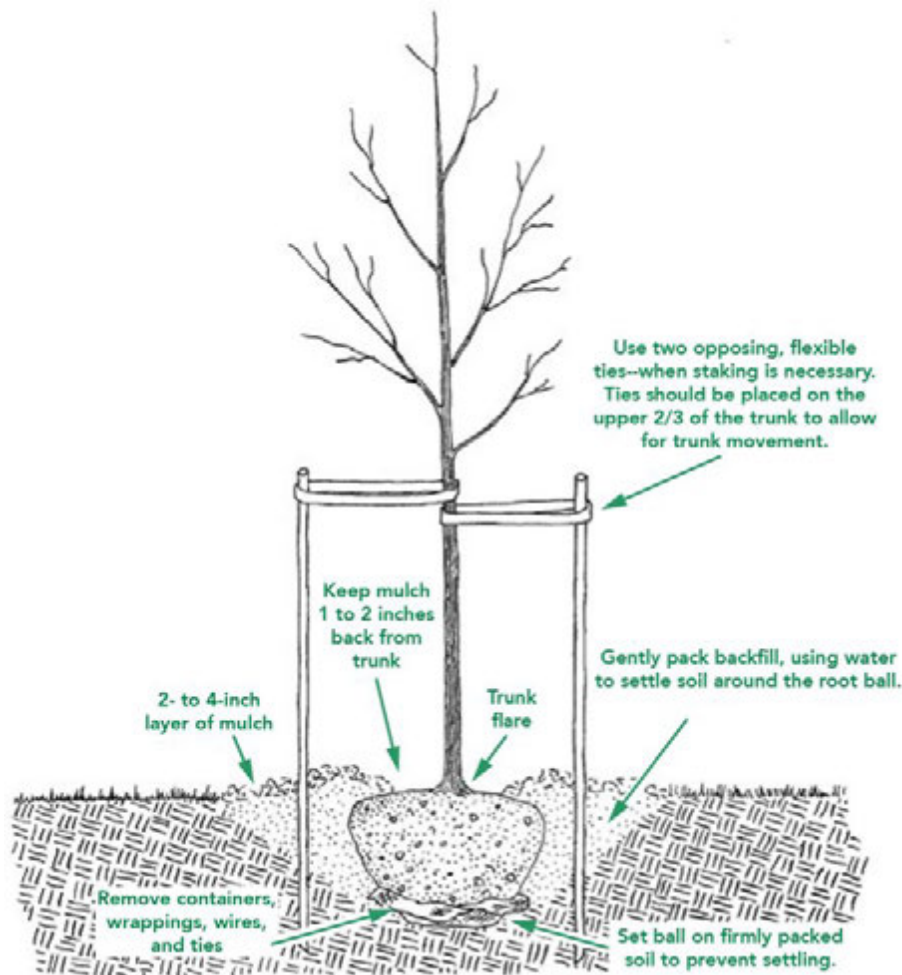
## APPENDIX D - SUMMARY OF DATA

**Table 3. Summary of Replacement**

	Existing Trees to Be Removed	Trees to be Planted in Replacement
NON-PROTECTED SIGNIFICANT TREES 8" + DBH Replaced 1:1	2	2
TOTAL	2	2



## NEW TREE PLANTING



The ideal time to plant trees and shrubs is during the dormant season, in the fall after leaf drop or early spring before budbreak. Weather conditions are cool and allow plants to establish roots in the new location before spring rains and summer heat stimulate new top growth. Before you begin planting your tree, be sure you have had all underground utilities located prior to digging.

If the tree you are planting is balled or bare root, it is important to understand that its root system has been reduced by 90 to 95 percent of its original size during transplanting. As a result of the trauma caused by the digging process, trees commonly exhibit what is known as transplant shock. Containerized trees may also experience transplant shock, particularly if they have circling roots that must be cut. Transplant shock is indicated by slow growth and reduced vigor following transplanting. Proper site preparation before and during planting coupled with good follow-up care reduces the amount of time the plant experiences transplant shock and allows the tree to quickly establish in its new location. Carefully follow nine simple steps, and you can significantly reduce the stress placed on the plant at the time of planting.

## NEW TREE PLANTING, continued

- 1. Dig a shallow, broad planting hole.** Make the hole wide, as much as three times the diameter of the root ball but only as deep as the root ball. It is important to make the hole wide because the roots on the newly establishing tree must push through surrounding soil in order to establish. On most planting sites in new developments, the existing soils have been compacted and are unsuitable for healthy root growth. Breaking up the soil in a large area around the tree provides the newly emerging roots room to expand into loose soil to hasten establishment.
- 2. Identify the trunk flare.** The trunk flare is where the roots spread at the base of the tree. This point should be partially visible after the tree has been planted (see diagram). If the trunk flare is not partially visible, you may have to remove some soil from the top of the root ball. Find it so you can determine how deep the hole needs for proper planting.
- 3. Remove tree container for containerized trees.** Carefully cutting down the sides of the container may make this easier. Inspect the root ball for circling roots and cut or remove them. Expose the trunk flare, if necessary.
- 4. Place the tree at the proper height.** Before placing the tree in the hole, check to see that the hole has been dug to the proper depth and no more. The majority of the roots on the newly planted tree will develop in the top 12 inches of soil. If the tree is planted too deeply, new roots will have difficulty developing because of a lack of oxygen. It is better to plant the tree a little high, 1-2 inches above the base of the trunk flare, than to plant it at or below the original growing level. This planting level will allow for some settling.
- 5. Straighten the tree in the hole.** Before you begin backfilling, have someone view the tree from several directions to confirm that the tree is straight. Once you begin backfilling, it is difficult to reposition the tree.
- 6. Fill the hole gently but firmly.** Fill the hole about one-third full and gently but firmly pack the soil around the base of the root ball. Be careful not to damage the trunk or roots in the process. Fill the remainder of the hole, taking care to firmly pack soil to eliminate air pockets that may cause roots to dry out. To avoid this problem, add the soil a few inches at a time and settle with water. Continue this process until the hole is filled and the tree is firmly planted. It is not recommended to apply fertilizer at time of planting.
- 7. Stake the tree, if necessary.** If the tree is grown properly at the nursery, staking for support will not be necessary in most home landscape situations. Studies have shown that trees establish more quickly and develop stronger trunk and root systems if they are not staked at the time of planting. However, protective staking may be required on sites where lawn mower damage, vandalism, or windy conditions are concerns. If staking is necessary for support, there are three methods to choose among: staking, guying, and ball stabilizing. One of the most common methods is staking. With this method, two stakes used in conjunction with a wide, flexible tie material on the lower half of the tree will hold the tree upright, provide flexibility, and minimize injury to the trunk (see diagram). Remove support staking and ties after the first year of growth.
- 8. Mulch the base of the tree.** Mulch is simply organic matter applied to the area at the base of the tree. It acts as a blanket to hold moisture, it moderates soil temperature extremes, and it reduces competition from grass and weeds. A 2- to 3-inch layer is ideal. More than 3 inches may cause a problem with oxygen and moisture levels. When placing mulch, be sure that the actual trunk of the tree is not covered. Doing so may cause decay of the living bark at the base of the tree. A mulch-free area, 1 to 2 inches wide at the base of the tree, is sufficient to avoid moist bark conditions and prevent decay.



## TREE MAINTENANCE AND PRUNING

Some trees do not generally require pruning. The occasional removal of dead twigs or wood is typical. Occasionally a tree has a defect or structural condition that would benefit from pruning. Any pruning activity should be performed under the guidance of a certified arborist or tree expert.

Because each cut has the potential to change the growth of the tree, no branch should be removed without a reason. Common reasons for pruning are to remove dead branches, to remove crowded or rubbing limbs, and to eliminate hazards. Trees may also be pruned to increase light and air penetration to the inside of the tree's crown or to the landscape below. In most cases, mature trees are pruned as a corrective or preventive measure.

Routine thinning does not necessarily improve the health of a tree. Trees produce a dense crown of leaves to manufacture the sugar used as energy for growth and development. Removal of foliage through pruning can reduce growth and stored energy reserves. Heavy pruning can be a significant health stress for the tree.

Yet if people and trees are to coexist in an urban or suburban environment, then we sometimes have to modify the trees. City environments do not mimic natural forest conditions. Safety is a major concern. Also, we want trees to complement other landscape plantings and lawns. Proper pruning, with an understanding of tree biology, can maintain good tree health and structure while enhancing the aesthetic and economic values of our landscapes.

### Pruning Techniques – From the I.S.A. Guideline

Specific types of pruning may be necessary to maintain a mature tree in a healthy, safe, and attractive condition.

**Cleaning** is the removal of dead, dying, diseased, crowded, weakly attached, and low-vigor branches from the crown of a tree.

**Thinning** is the selective removal of branches to increase light penetration and air movement through the crown. Thinning opens the foliage of a tree, reduces weight on heavy limbs, and helps retain the tree's natural shape.

**Raising** removes the lower branches from a tree to provide clearance for buildings, vehicles, pedestrians, and vistas.

**Reduction** reduces the size of a tree, often for clearance for utility lines. Reducing the height or spread of a tree is best accomplished by pruning back the leaders and branch terminals to lateral branches that are large enough to assume the terminal roles (at least one-third the diameter of the cut stem). Compared to topping, reduction helps maintain the form and structural integrity of the tree.

## **TREE MAINTENANCE AND PRUNING, continued**

### **How Much Should Be Pruned?**

Mature trees should require little routine pruning. A widely accepted rule of thumb is never to remove more than one-quarter of a tree's leaf-bearing crown. In a mature tree, pruning even that much could have negative effects. Removing even a single, large- diameter limb can create a wound that the tree may not be able to close. The older and larger a tree becomes, the less energy it has in reserve to close wounds and defend against decay or insect attack. Pruning of mature trees is usually limited to removal of dead or potentially hazardous limbs.

### **Wound Dressings**

Wound dressings were once thought to accelerate wound closure, protect against insects and diseases, and reduce decay. However, research has shown that dressings do not reduce decay or speed closure and rarely prevent insect or disease infestations. Most experts recommend that wound dressings not be used.

## **DISEASES AND INSECTS**

Continual observation and monitoring of your tree can alert you to any abnormal changes. Some indicators are: excessive leaf drop, leaf discoloration, sap oozing from the trunk and bark with unusual cracks. Should you observe any changes, you should contact a Tree specialist or Certified Arborist to review the tree and provide specific recommendations. Trees are susceptible to hundreds of pests, many of which are typical and may not cause enough harm to warrant the use of chemicals. However, diseases and insects may be indication of further stress that should be identified by a professional.

## **GRADE CHANGES**

The growing conditions and soil level of trees are subject to detrimental stress should they be changed during the course of construction. Raising the grade at the base of a tree trunk can have long-term negative consequences. This grade level should be maintained throughout the protected zone. This will also help in maintaining the drainage in which the tree has become accustomed.

## **INSPECTION**

The property owner should establish an inspection calendar based on the recommendation provided by the tree specialist. This calendar of inspections can be determined based on several factors: the maturity of the tree, location of tree in proximity to high-use areas vs. low-use area, history of the tree, prior failures, external factors (such as construction activity) and the perceived value of the tree to the homeowner.

## Assumptions and Limiting Conditions

No warranty is made, expressed or implied, that problems or deficiencies of the trees or the property will not occur in the future, from any cause. The Consultant shall not be responsible for damages or injuries caused by any tree defects, and assumes no responsibility for the correction of defects or tree related problems.

The owner of the trees may choose to accept or disregard the recommendations of the Consultant, or seek additional advice to determine if a tree meets the owner's risk abatement standards.

The Consulting Arborist has no past, present or future interest in the removal or retaining of any tree. Opinions contained herein are the independent and objective judgments of the consultant relating to circumstances and observations made on the subject site.

The recommendations contained in this report are the opinions of the Consulting Arborist at the time of inspection. These opinions are based on the knowledge, experience, and education of the Consultant. The field inspection was a visual, grade level tree assessment.

The Consulting Arborist shall not be required to give testimony, perform site monitoring, provide further documentation, be deposed, or to attend any meeting without subsequent contractual arrangements for this additional employment, including payment of additional fees for such services as described by the Consultant.

The Consultant assumes no responsibility for verification of ownership or locations of property lines, or for results of any actions or recommendations based on inaccurate information.

This Arborist report may not be reproduced without the express permission of the Consulting Arborist and the client to whom the report was issued. Any change or alteration to this report invalidates the entire report.

Should you have any further questions regarding this property, please contact me at (310) 663-2290.

Respectfully submitted,



**Lisa Smith**

Registered Consulting Arborist #464  
ISA Board Certified Master Arborist #WE3782B  
ISA Tree Risk Assessor Qualified- Instructor  
American Society of Consulting Arborists, Member

