

City of Cloverdale
Notice of Preparation and Notice of Public Scoping Meeting
General Plan Circulation Element Update Project

Date: January 31, 2024

To: Public Agencies and Private Parties

From: Kevin Thompson, Assistant City Manager, City of Cloverdale

Subject: Notice of Preparation of an Environmental Impact Report and Public Scoping Meeting

NOTICE IS HEREBY GIVEN THAT the City of Cloverdale (Lead Agency and/or City) will prepare a Subsequent Environmental Impact Report (Subsequent EIR) to the certified Final EIR for the City of Cloverdale General Plan (State Clearinghouse [SCH] number 2007082143) for the project identified herein. The City Council certified the General Plan Final EIR on May 13, 2009.¹ The project description, location, and probable environmental effects of the General Plan Circulation Element Update Project (proposed Circulation Element Update) are described in the attached materials.

30-DAY Notice of Preparation (NOP) COMMENT PERIOD: The City is soliciting comments from public agencies, organizations, and members of the public regarding the scope and content of the Subsequent EIR and the environmental issues and alternatives to be addressed in the document. Public agencies may need to use the Subsequent EIR when considering permitting or other approvals that are germane to the agencies' responsibilities in connection with the projects.

Because of time limits mandated by State law, public agencies must submit any comments in response to this notice at the earliest possible date but not later than 30 days after receipt of this notice. The City will also accept comments from other interested parties regarding this notice during this time period. Accordingly, please provide your written response to the address shown below by **5:00 p.m. Friday, March 1, 2024**. If you wish to be placed on the notification list for this project, or if you have any questions or need additional information, please contact the person below.

Kevin Thompson, Assistant City Manager
City of Cloverdale
Planning and Community Development
124 North Cloverdale Boulevard
Cloverdale, CA 95425
Phone: 707.894.1723
Email: kthompson@ci.cloverdale.ca.us

Public Scoping Meeting

A virtual public Scoping Meeting will be held virtually over Zoom on Tuesday, February 13 at 4:00 p.m. There will not be an in-person attendance option for this Scoping Meeting. At this meeting, public agencies, organizations, and members of the public will be able to review the proposed

¹ City of Cloverdale. 2009. City of Cloverdale General Plan Update Final Environmental Impact Report.

Circulation Element Update and provide comments on the scope of the environmental review process. Please see below for Zoom Meeting Information.

Join Zoom Meeting: Tuesday February 13, 2024 at 4:00 p.m. PST.

<https://us02web.zoom.us/j/83484167821>

Meeting ID: 834 8416 7821

Passcode: 95425

Phone Number: +1 669 900 6833

Find your local number: <https://us02web.zoom.us/u/kcxF1JA38m>

GENERAL PLAN CIRCULATION ELEMENT UPDATE PROJECT

Project Location

The project site is the City of Cloverdale (City), located in Sonoma County, California (Exhibit 1). The City is situated at the northern end of Alexander Valley, where the Mayacamas Mountains meet the Coast Range. Additionally, the City is located approximately 34 miles northwest of Santa Rosa, approximately 25 miles south of Ukiah, and approximately 67 miles southeast of the town of Mendocino (Exhibit 2).

Existing Conditions

Location

The City encompasses 2.5 square miles (approximately 1,601 acres), while the City's Sphere of Influence (SOI) encompasses approximately 2.3 square miles beyond the City limits. The Russian River flows through the center of the Alexander Valley, and the developed portion of the City is located on the valley floor west of the Russian River and east of the Coast Range.

Prevalent land uses in the City include Low Density Residential, Destination Commercial, Conservation, and Medium Density Residential. Existing land uses are mapped in Exhibit 3. Regional access to the City is provided via highways and major roadways, including United States Route (US) 101, State Route (SR) 128, and Cloverdale Boulevard. In addition, Sonoma County Transit, Route 60 provides daily bus service to and from the City with connections to the greater Sonoma County area.² Amtrak Bus Thruway Service provides bus service to the City via Cloverdale Depot, located at Citrus Fair Drive and Asti Road. There are two active Cleanup and Abatement Orders listed on the Cortese List within the City.³ The first facility is Masonite Corporation Cloverdale, related to contaminated ground water, and the Cleanup and Abatement Order was put into effect on June 1, 1983. The second facility is Krasilsa Pacific Farms LLC, related to miscellaneous facility waste sources, and the Cleanup and Abatement Order was put into effect on October 21, 2019.

There are no active hazardous waste and substance sites from the Department of Toxic Substances Control (DTSC) EnviroStor database within the City, and there are 48 Leaking Underground Storage Tank (LUST) sites within the City according to the California State Water Resources Control Board's (State Water Board's) GeoTracker database. However, all 48 of these sites are listed as Completed–Case Closed.^{4,5}

² City of Cloverdale. Transit Services. Website: <https://www.cloverdale.net/267/Transit-Services>. Accessed October 26, 2023.

³ California State Water Resources Control Board (State Water Board). List of "active" Cease and Desist Orders (CDO) and Clean Up and Abatement Orders (CAO) from State Water Board. Website: <https://calepa.ca.gov/wp-content/uploads/sites/6/2016/10/SiteCleanup-CorteseList-CDOCAOList.xlsx>. Accessed December 14, 2023.

⁴ Department of Toxic Substances Control (DTSC). List of Hazardous Waste and Substances sites from Department of Toxic Substances Control (DTSC) EnviroStor database. Website: https://www.envirostor.dtsc.ca.gov/public/search?cmd=search&reporttype=CORTESE&site_type=CSITES,FUDS&status=ACT,BKLG,COM&reporttitle=HAZARDOUS+WASTE+AND+SUBSTANCES+SITE+LIST+%28CORTESE%29. Accessed December 14, 2023.

⁵ California State Water Resources Control Board (State Water Board). List of Leaking Underground Storage Tank Sites from the State Water Board's GeoTracker database. Website: https://geotracker.waterboards.ca.gov/search?CMD=search&case_number=&business_name=&main_street_name=&city=&zip=&county=&SITE_TYPE=LUST&oilfield=&STATUS=&BRANCH=&MASTER_BASE=&Search=Search. Accessed December 14, 2023.

Existing Circulation Element

The City of Cloverdale General Plan (General Plan) was adopted by the City Council on May 13, 2009, and was last amended on November 10, 2021. The current General Plan includes a Circulation Element that identifies guiding principles for moving people and goods within the City and identifies the infrastructure necessary to ensure that the transportation network can adequately serve the City at General Plan buildout.

The current Circulation Element utilizes Level of Service (LOS) as a threshold of significance rather than Vehicle Miles Traveled (VMT). The traditional measure of circulation system performance has been LOS, which rates roadway traffic flow characteristics from Level A (free-flowing traffic) to Level F (gridlock). LOS generally serves as an indicator of the performance of the circulation system. Poor LOS (typically Levels D, E, and F) has historically been defined as an environmental impact requiring mitigation).

Project Description

Project Summary

The City proposes to update the Circulation Element of the General Plan to address Senate Bill (SB) 743 and the transition of California Environmental Quality Act (CEQA) transportation analysis from congestion-based metrics, such as LOS, to the State-mandated metric of VMT.

The proposed Circulation Element Update would ensure consistency with State law regarding Complete Streets and would develop updated roadway cross-sections for arterials and collectors, incorporate elements from the current City Bicycle and Pedestrian Plan. The Circulation Element Update would also include new goals and policies related to VMT analysis and reductions considering the City's Climate Emergency Declaration (Resolution Number 91-2019) on September 11, 2019. The Declaration calls for a transition away from fossil fuels and an urgent collaborative mobilization effort focused on enacting policies, such as several transportation measures that would help reduce emissions, including employing an electrified fleet mix and clean vehicles, updating the Bicycle and Pedestrian Master Plan, utilizing the Complete Streets model to support multimodal transit, and continuing implementation of safe routes to school.

Circulation Element Update Policies and Programs

The proposed Circulation Element Update identifies the guiding principles for moving people and goods within the City and identifies the infrastructure necessary to assure that the transportation network will serve the City at General Plan buildout. The goals, policies, and implementation actions would support the City's compliance with State-mandated requirements to implement Complete Streets and make efforts to reduce VMT in the community.

The proposed Circulation Element Update includes policies to support additional important roadway functions, such as existing and planned bike and pedestrian circulation. The proposed Circulation Element Update also addresses transit services and the interconnection between the City's local multimodal network and regional transit and passenger rail services. Policies in the proposed

Circulation Element Update would continue the City's commitment to Complete Streets strategy to provide residents, employees, and visitors with a range of options for travel.

The proposed Circulation Element Update supports a multimodal transportation system that serves the mobility needs of all residents and manages traffic congestion as the City grows and changes. The California Complete Streets Act of 2008 (Assembly Bill 1358) defines Complete Streets as roadways that are planned, designed, constructed, and maintained to provide safe mobility for all users regardless of age and physical ability. The proposed Circulation Element Update identifies the roadway system necessary for automobile traffic by setting LOS goals, VMT goals, hierarchy of roads, and areas where road improvements are necessary.

Furthermore, since the last General Plan update, California has changed the way that environmental impacts associated with the circulation system are defined and analyzed under CEQA. As described above, the current Circulation Element uses LOS as an environmental threshold and measure of circulation system performance. On July 1, 2020, Senate Bill 743 (SB 743) became effective. Implementing SB 743, the City's environmental thresholds recognize that VMT is generally the most appropriate measure of transportation impacts. VMT is a measure of the amount of travel for all vehicles in a geographic region. Accordingly, the proposed Circulation Element Update would change the focus of the Circulation Element from widening roadways and intersections to reducing the total vehicle travel within a community.

State law does permit the City to use LOS standards and policies when evaluating development projects and planning required transportation improvements to support such development; therefore, the proposed Circulation Element Update includes goals and policies that support congestion relief (LOS) as well as reduction of total VMT.

Project Objectives

The underlying purpose of the Circulation Element Update is to address the current and future needs of residents, businesses, employees, and visitors of the City. The objectives of the proposed Circulation Element Update are as follows:

- Update City policies in the Circulation Element to comply with State law, including State regulations related to conformance with SB 743.
- Support the City's compliance with State-mandated requirements to implement Complete Streets and make efforts to reduce VMT in the community.
- Implement Complete Streets throughout the City.
- Recognize the importance of reducing VMT in the City.
- Encourage a range of options for travel to work, shopping, and leisure destinations.
- Prioritize the efficiency of goods movement.
- Adopt policies that guide the direction of physical development in the City in a way that encourages economic vitality and promotes quality of life.

Required Discretionary Approvals

Discretionary approvals and permits are required by the City for implementation of the proposed Circulation Element Update. The proposed Circulation Element Update would require the following discretionary approvals and actions:

- General Plan Amendment
- Adopt Circulation Element Update
- Certify Subsequent EIR

There are no Responsible Agencies identified for the proposed Circulation Element Update. However, a number of other agencies, including Trustee agencies, may potentially provide information as commenting agencies, pursuant to Public Resources Code Section 21080.4(a) and CEQA Guidelines Section 15375. The Draft Subsequent EIR will provide environmental information to these agencies and other public agencies, which may be required to grant approvals or coordinate with other agencies, as part of project implementation. These agencies may include, but are not limited to, the following:

- California Department of Transportation
- Bay Area Air Quality Management District

Environmental Review

Purpose

In accordance with CEQA Guidelines (14 California Code of Regulations [CCR] § 15082), the City has prepared this NOP to inform agencies and interested parties that a Subsequent EIR will be prepared for the proposed Circulation Element Update. The purpose of an NOP is to provide sufficient information about the proposed Circulation Element Update to allow agencies and interested parties the opportunity to provide a meaningful response related to the scope and content of the Subsequent EIR, including mitigation measures that should be considered and alternatives that should be addressed (CEQA Guidelines 14 CCR § 15082(b)).

Environmental Review Process

Following completion of the 30-day NOP public review period, the City will incorporate relevant information into the Subsequent EIR, including results of public scoping and technical studies. The Subsequent EIR will then be circulated for public review and comment for a 45-day public review period.

The City requests that any potential Responsible or Trustee Agency responding to this notice do so in a manner consistent with CEQA Guidelines Section 15082(b). All parties that have submitted their names and email or mailing addresses will be notified throughout the CEQA review process.

A copy of the NOP as well as all project information can be found on the project website at <https://www.cloverdale.net/243/Long-Range-Planning> or in person at 124 North Cloverdale Boulevard Cloverdale, CA 95425.

Potential Environmental Effects

The program-level Subsequent EIR will evaluate whether the proposed Circulation Element Update may potentially result in one or more significant environmental effects, which will be evaluated in the relevant sections listed below. The Circulation Element Update is limited to policy changes.

Transportation and Traffic

The Subsequent EIR will analyze the potential impacts of the proposed Circulation Element Update on the circulation system, including VMT within the Planning Area and all modes of transit.

Effects Found not to be Significant

Unless specific comments are received during the NOP public comment period that indicate a potential for the proposed project to result in significant impacts, the following issues will be addressed in the Effects Found not to be Significant section of the Subsequent EIR.

Aesthetics, Light, and Glare

The proposed Circulation Element Update is limited to policy changes and does not propose any specific development or physical environmental changes. These conditions preclude the possibility of impacts on aesthetics, light, and glare; therefore, this issue will not be analyzed further by the Subsequent EIR.

Agricultural and Forestry Resources

The proposed Circulation Element Update is limited to policy changes and does not propose any specific development or physical environmental changes. These conditions preclude the possibility of impacts on agricultural and forestry resources; therefore, this issue will not be analyzed further by the Subsequent EIR.

Air Quality

The proposed Circulation Element Update is limited to policy changes and does not propose any specific development or physical environmental changes. The purpose of the policies is to improve circulation throughout the City, which would have at least a minimal reduction in mobile source emissions. These conditions preclude the possibility of impacts on air quality; therefore, this issue will not be analyzed further by the Subsequent EIR.

Biological Resources

The proposed Circulation Element Update is limited to policy changes and does not propose any specific development or physical environmental changes. These conditions preclude the possibility of impacts on biological resources; therefore, this resource section will not be analyzed further by the Subsequent EIR.

Cultural and Tribal Cultural Resources

The proposed Circulation Element Update is limited to policy changes and does not propose any specific development or physical environmental changes. These conditions preclude the possibility of impacts on cultural and tribal cultural resources; therefore, this issue will not be analyzed further by the Subsequent EIR.

Geology, Soils, and Seismicity

The proposed Circulation Element Update is limited to policy changes and does not propose any specific development or physical environmental changes. These conditions preclude the possibility of impacts on geology, soils, and seismicity; therefore, this issue will not be analyzed further by the Subsequent EIR.

Greenhouse Gas Emissions

The proposed Circulation Element Update is limited to policy changes and does not propose any specific development or physical environmental changes. The purpose of the policies is to improve circulation throughout the City, which would have at least a minimal reduction in mobile source emissions. These conditions preclude the possibility of impacts on greenhouse gas (GHG) emissions; therefore, this issue will not be analyzed further by the Subsequent EIR.

Energy

The proposed Circulation Element Update is limited to policy changes and does not propose any specific development or physical environmental changes. These conditions preclude the possibility of impacts on energy; therefore, this issue will not be analyzed further by the Subsequent EIR.

Hazards and Hazardous Materials

The proposed Circulation Element Update is limited to policy changes and does not propose any specific development or physical environmental changes. These conditions preclude the possibility of impacts on hazards and hazardous materials; therefore, this issue will not be analyzed further by the Subsequent EIR.

Hydrology and Water Quality

The proposed Circulation Element Update is limited to policy changes and does not propose any specific development or physical environmental changes. These conditions preclude the possibility of impacts on hydrology and water quality; therefore, this issue will not be analyzed further by the Subsequent EIR.

Land Use and Planning

The proposed Circulation Element Update is limited to policy changes and does not propose any changes in land use or zoning designations and does not propose any specific development or physical environmental changes. These conditions preclude the possibility of impacts on land use and planning; therefore, this issue will not be analyzed further by the Subsequent EIR.

Mineral Resources

The proposed Circulation Element Update is limited to policy changes and does not propose any specific development or physical environmental changes. These conditions preclude the possibility of impacts on mineral resources; therefore, this issue will not be analyzed further by the Subsequent EIR.

Noise

The proposed Circulation Element Update is limited to policy changes and does not propose any specific development or physical environmental changes. These conditions preclude the possibility of impacts on noise; therefore, this issue will not be analyzed further by the Subsequent EIR.

Population and Housing

The proposed Circulation Element Update is limited to policy changes and does not propose any specific development or physical environmental changes. These conditions preclude the possibility of impacts on population and housing; therefore, this issue will not be analyzed further by the Subsequent EIR.

Public Services

The proposed Circulation Element Update is limited to policy changes and does not propose any specific development or physical environmental changes. These conditions preclude the possibility of impacts on public services; therefore, this issue will not be analyzed further by the Subsequent EIR.

Recreation

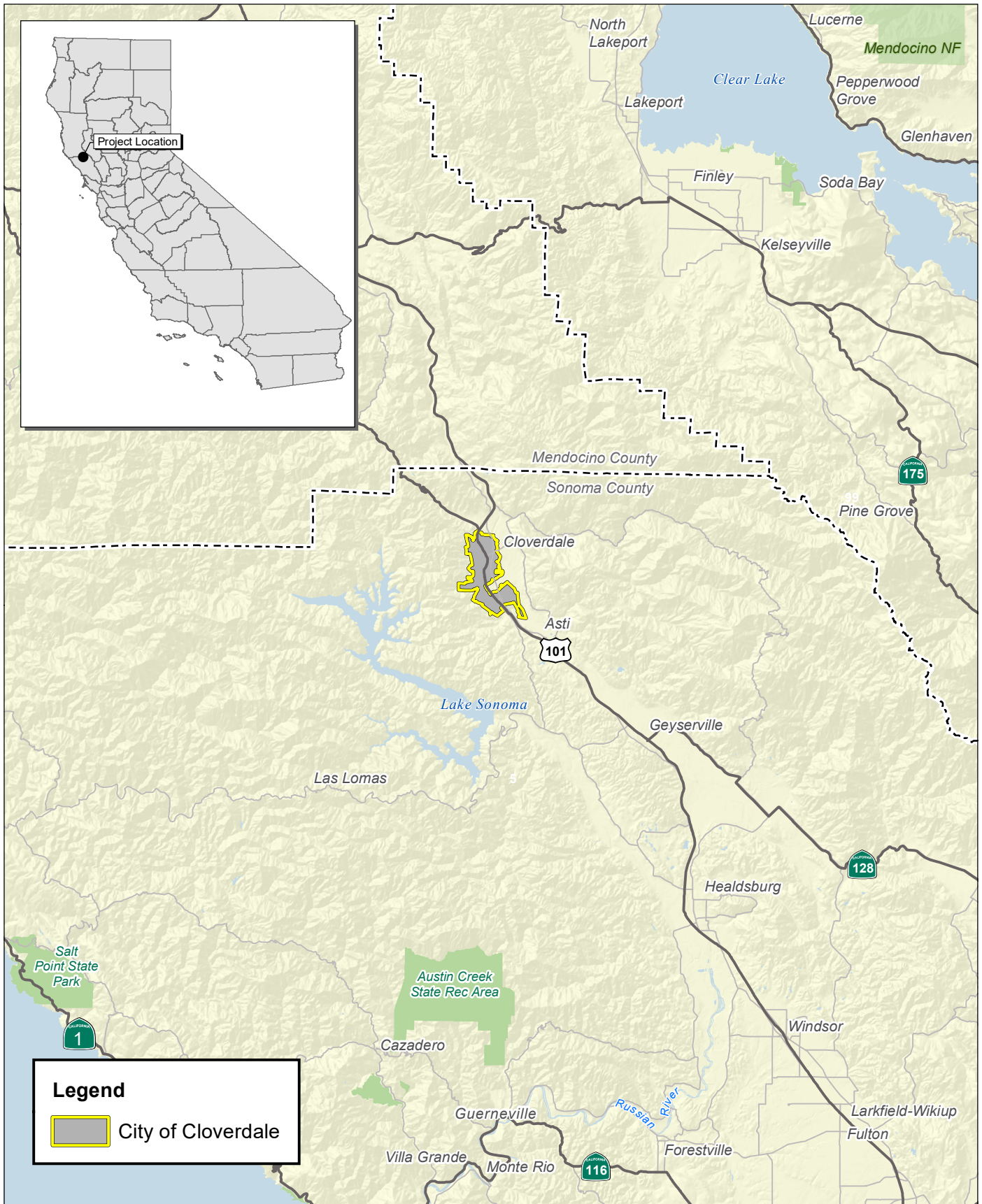
The proposed Circulation Element Update is limited to policy changes and does not propose any specific development or physical environmental changes. These conditions preclude the possibility of impacts on recreation; therefore, this issue will not be analyzed further by the Subsequent EIR.

Utilities and Service Systems

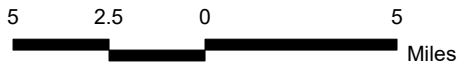
The proposed Circulation Element Update is limited to policy changes and does not propose any specific development or physical environmental changes. These conditions preclude the possibility of impacts on utilities and service systems; therefore, this issue will not be analyzed further by the Subsequent EIR.

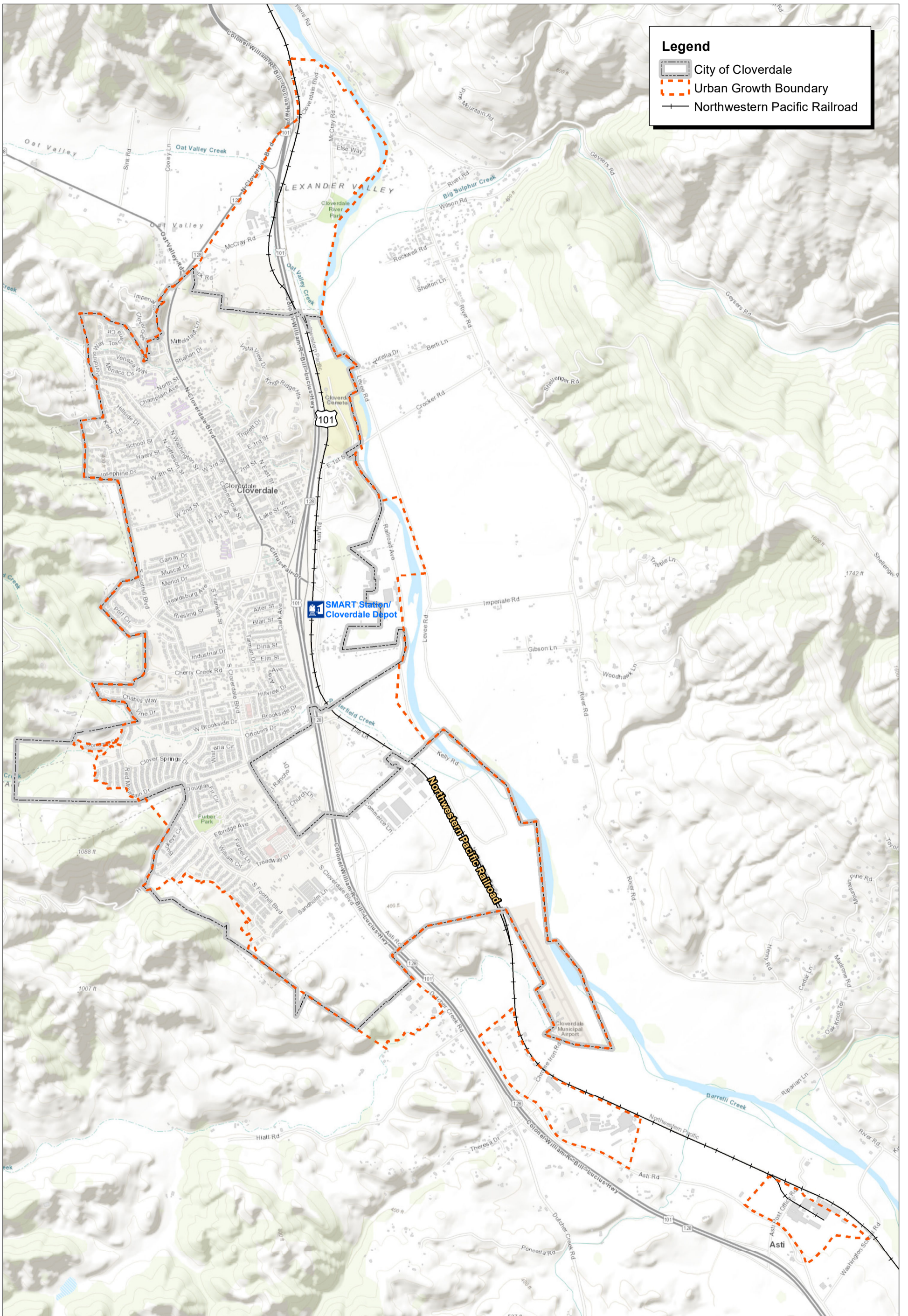
Wildfire

The proposed Circulation Element Update is limited to policy changes and does not propose any specific development or physical environmental changes. These conditions preclude the possibility of impacts on wildfire; therefore, this issue will not be analyzed further by the Subsequent EIR.



Source: Census 2000 Data, The CaSIL.

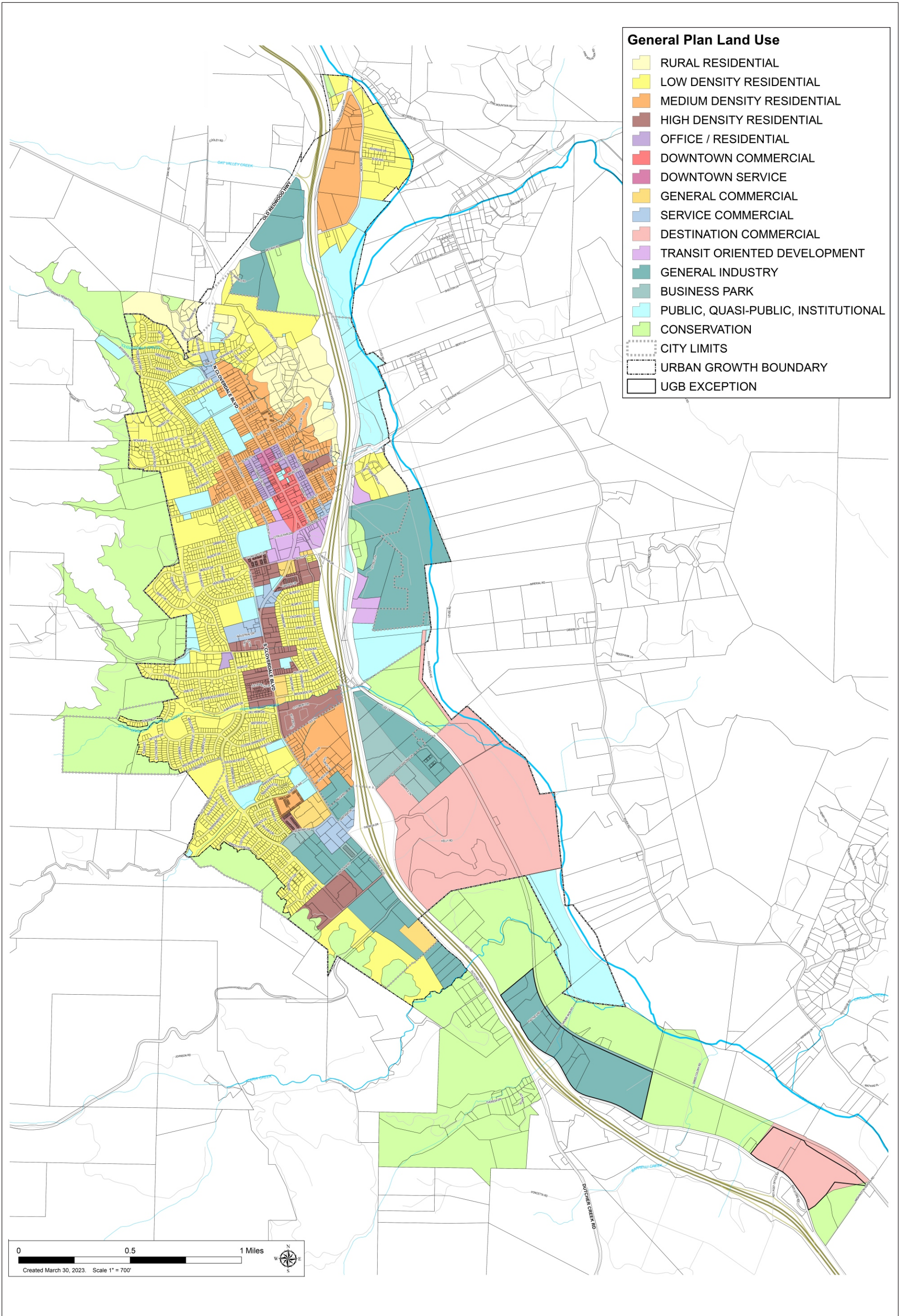




Source: ESRI Aerial Imagery.



Exhibit 2
Local Vicinity Map



Source: City of Cloverdale.