



Clerk of the Board of Supervisors CEQA Document Filing SAP Transfer Request

Please complete the following information and submit to the Clerk of the Board with the associated CEQA documentation for filing.
Clerk of the Board staff will initiate a Journal Transfer (ZJ) in SAP for department staff approval.

Department Name	Public Works	
Department Contact	Michele Derry	
Contact Phone Number	387-8109	
Project Name	SBCFCD 2024 Emergency Flood Repairs Zones 1-3	
Approved by the Board of Supervisors (if applicable)	Board Meeting Date	Agenda Item Number

General Ledger	Amount	Cost Center/Internal Order/WBSE	Text
52002135	\$50.00	1910002518 (55%) 1920002522 (30%) 1930002526 (15%)	NOE – Feb 24 Storms Emergency Flood Control Facility Repairs Zones 1-1-3 Zone 1 -15 facilities (F00011) 55% Zone 2 – 8 facilities (F00022) 30% Zone 3 – 4 facilities (F00033) 15%

Special Instructions:

Arlene B. Chun		2/21/24
Requestor Name	Requestor Signature	Date
Tracie Velasco		2/26/2024
Department Approver Name	Department Approver Signature	Date

Clerk of the Board use:

Processed by:	Date	Document Number

Notice of Exemption

To: Office of Planning and Research
1400 Tenth Street, Room 121
Sacramento, CA 95814

Clerk of the Board of Supervisors
San Bernardino County
385 North Arrowhead Avenue, Second Floor
San Bernardino, CA 92415-0130

From: San Bernardino County
Flood Control District
Environmental Management Division
825 E. Third Street, Room 123
San Bernardino, CA 92415-0835

Project Description

Project Title: San Bernardino County Flood Control District – 2024 Emergency Flood Control Facility Repairs Zones 1-3

Project Location: County-maintained dams, basins, channels, levees, berms, and culverts within the cities of Ontario, Rancho Cucamonga, Fontana, Chino Hills, Colton, Rialto, Highland, Redlands, San Bernardino, Loma Linda, Yucaipa, and surrounding unincorporated communities. Refer to Exhibit A for list of damaged facilities and locations.

Project Description: Heavy rainfall in February 2024, resulted in significant flooding, and sediment, rock and debris deposition and scour, damaging flood control facilities, drainages, and culverts, resulting in an imminent threat to life and property. Local and State Emergency Proclamations have been issued for San Bernardino County. Emergency repair work includes, but is not limited to, removal of sediment, rock and debris for public safety purposes and repairs/replacements of damage flood control facilities and appurtenant structures.

Applicant

San Bernardino County Flood Control District

825 E. Third Street

Address

San Bernardino, CA 92415-0835

(909) 387-8109

Phone

Representative

Michele Derry

Name

Same as Applicant

Address

Arlene B. Chun, M.S., P.E.

Lead Agency Contact Person

(909) 387-8109

Same as Applicant

Phone

Exempt Status: (check one)

Ministerial [Sec. 21080(B)(1); 15268];

Declared Emergency [Sec. 21080(B)(3); 15269(a)];

Emergency Project [Sec. 21080(B)(4); 15269(d)];


Categorical Exemption. State type and section: _____

Statutory Exemptions. State code number: _____

Other Exemption: Section 15269 (b) Emergency Repairs to Publicly Owned Facilities

Section 15269 (c) Specific Actions Taken to Mitigate an Emergency

Reasons why project is exempt: Section 15269(a) of the California Environmental Quality Act (CEQA) Guidelines allows for emergency repairs to an area in which a State of Emergency has been proclaimed by the Governor. Governor Newsom declared a State of Emergency on February 5, 2024. Section 15269(b) allows for emergency repairs to publicly or privately owned facilities to maintain service essential to public health, safety, or welfare. Section 15269 (c) allows for specific actions taken to mitigate for an emergency, and Section 15269 (d) authorizes emergency work on existing highways damaged by flooding and landslides.


Signature Arlene B. Chun, M.S., P.E.

Engineering Manager, Environmental Mgmt. Division

Title

02/21/2024

Date

Signed by Lead Agency

Signed by Applicant

Date received for filing at OPR: N/A

EXHIBIT A
List of Damaged Facilities and Locations in support of CEQA NOE

ZONE 1

Facility: **Turner Basins** - Channel Segment (1-504-4A-4E)

Site Location: East of Archibald and north of Inland Empire Blvd. in the City of Ontario

Facility: **Lower Cucamonga Spreading Grounds** (1-301-2A, 2B, 2C, 2D)

Site Location: East of Archibald and South of Chino Avenue in the City of Ontario

Facility: **Declez Basin** (1-814-3A)

Site Location: East of Country Village Road and South of Philadelphia Ave in the unincorporated Fontana community

Facility: **Grove Basin** (1-910-4A)

Site Location: South of Riverside Dr. and East of S. Grove Avenue in the City of Ontario

Facility: **Ely Basins #1,2** (1-211-4A,4B)

Site Location: North of E. Philadelphia Street and East of S. Baker Ave. in the City of Ontario

Facility: **Demens Basin Channel** (1-402-1B)

Site Location: North of Wilson Ave. and East of Beryl Street in the City of Rancho Cucamonga.

Facility: **Victoria Basin** (1-703-4A)

Site Location: South of the I-210 and West of the I-15, north of Victoria St and west of Etiwanda Creek adjacent to Etiwanda High School in the City of Rancho Cucamonga.

Facility: **Day Creek Basins #1,2** (1-606-4A/B)

Site Location: South of I-210 and adjacent and west of Day Creek Channel, north of Victoria Park Lane in the City of Rancho Cucamonga.

Facility: **Riverside Basin** (1-604-4A)

Site Location: East of I-15 and West of Union Pacific Railroad, south of Philadelphia Ave, in the unincorporated community of Jurupa Valley.

Facility: **Hickory Basin** (1-811-3A)

Site Location: East of Commerce Drive and South of Whittram Ave. and the railroad and northwest of the Fontana Speedway in an unincorporated community of Fontana.

Facility: **English Channel** (1-127-1A)

Site Location: East of Commerce Drive and South of Whittram Ave. and the railroad and northwest of the Fontana Speedway in an unincorporated community of Fontana.

Facility: **San Sevaine Basins #1, #2, #3, #4, #5** (1-802-4A,B,C,D,and E)

Site Location: South of Wilson Ave. and west of Cherry Ave in the City of Rancho Cucamonga.

Facility: **San Sevaine Spreading Grounds** (1-802-2A)

Site Location: North of Wilson Ave. and west of Cherry Ave in the City of Rancho Cucamonga.

Facility: **Carbon Canyon Channel** (1-114-1A/1B)

Site Location: Between Chino Hills Parkway east to the confluence of Chino Creek, just west of Yorba Court, in the City of Chino Hills.

Facility: **English Channel** (1-127-1A)

Site Location: South of Eucalyptus Ave and West of Peyton Drive in the City of Chino Hills.

ZONE 2

Facility: **Reche Channel** (2-702-1A,1B,1C)

Site Location: From confluence to the Santa Ana River just west of S. Mount Vernon Ave., east to Reche Canyon Road in the City of Colton.

Facility: **Merrill Basin** (2-102-4A)

Site Location: East of S. Linden Ave. and south of W. Merrill Ave in the City of Rialto.

Facility: **Linden Basin** (2-103-4A)

Site Location: Between Maple Ave and S. Linden Ave., south of W. Merrill Ave in the City of Rialto.

Facility: **City Creek Channel** (2-603-1A)

Site Location: North of Waterman Ave., and east, between Warm Creek and confluence with City Creek, just west of the I-210, in the cities of Highland and San Bernardino.

Facility: **Cajon Creek** (2-201-1A)

Site Location: North of Glen Helen Parkway, south of the BNSF railroad, and west of the I-215 freeway in the unincorporated community of Devore.

Facility: **Randall Basin** (2-113-4A)

Site Location: North of W. Randall Ave., between S. Pepper Ave, and S. Meridian Ave., south of W. Mill St. in the City of San Bernardino.

Facility: **29th Street Basins** 1-3 (2-371-4A, B,C)

Site Location: South of 29th Street and north of Norbert Dr., west of East Twin Creek channel in the City of San Bernardino.

Facility: **Waterman Basin #1 East** (2-403-4A)

Site Location: Upper Basin of Waterman Spreading Grounds, East of Waterman Ave, and North of 40th Street in the City of San Bernardino.

ZONE 3

Facility: **Oak Glen Basins** (3-603-4A-C)

Site Location: East of Bryant Street and north of Panorama Dr., in the City of Yucaipa.

Facility: **Wilson Basins** (3-602-4A, 4B)

Site Location: Eastern most basins, north of Oak Glen Road and East of Bryant Street, just west of Fremont Street in the City of Yucaipa.

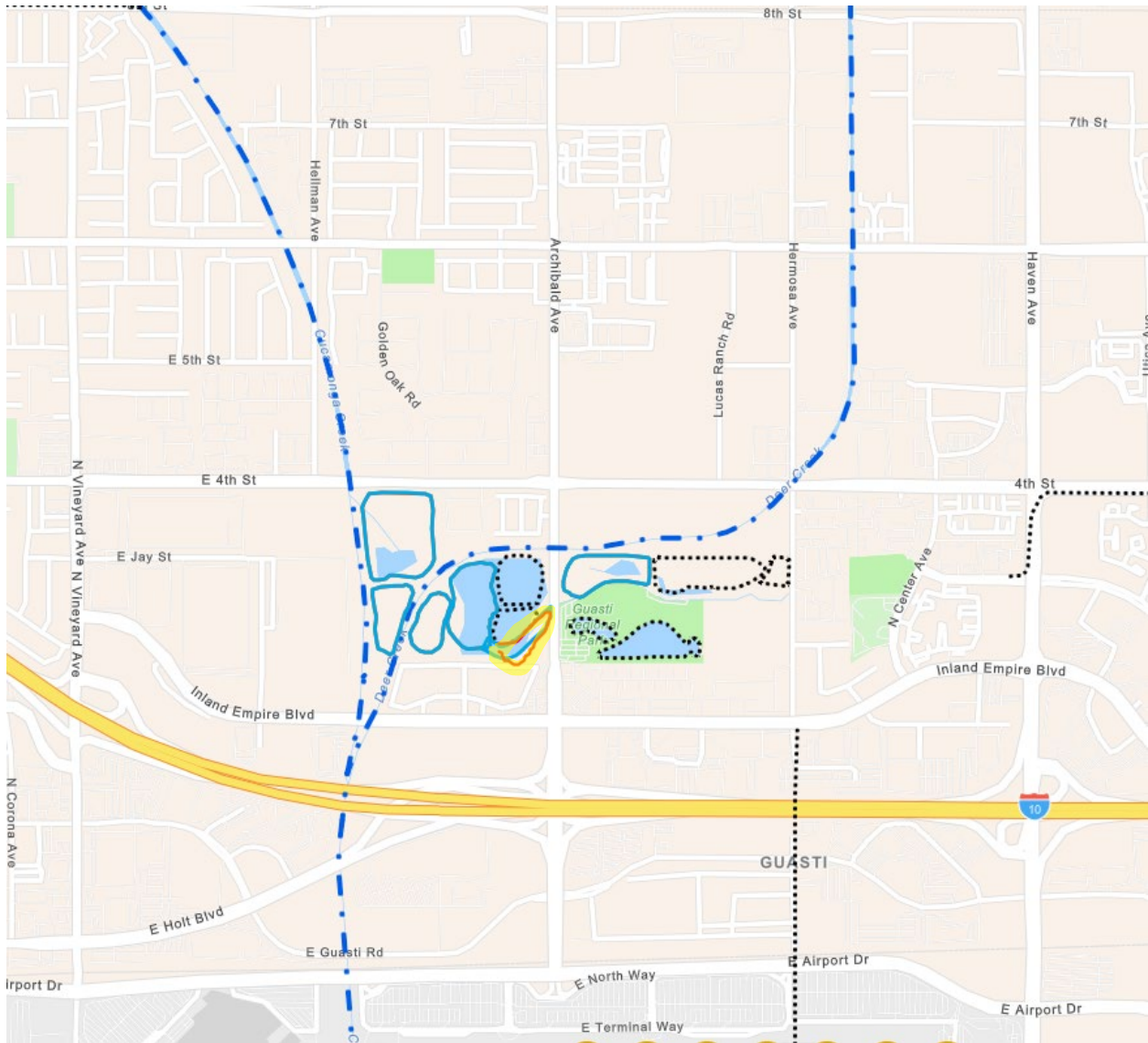
Facility: **Brown's Ditch Basin** (3-404-4A)

Site Location: At the corner of San Timoteo Canyon Road and San Timoteo Canyon Road, just north of Alessandro Road, in the City of Redlands.

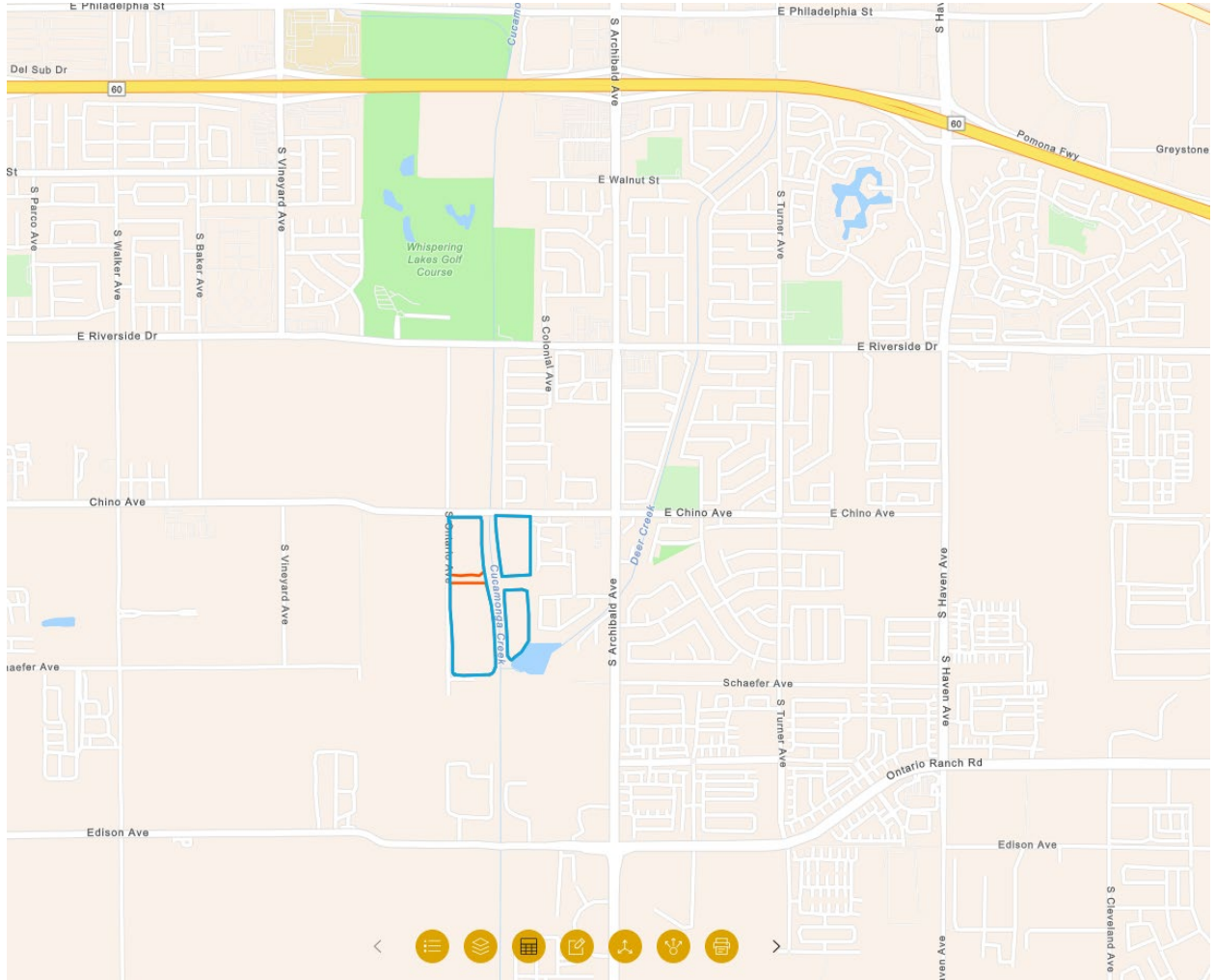
Facility: **Loma Linda Storm Drain** (3-402-6B)

Site Location: South of San Timoteo Wash, west of Loma Linda Academy and upstream to Anderson St. in the City of Loma Linda.

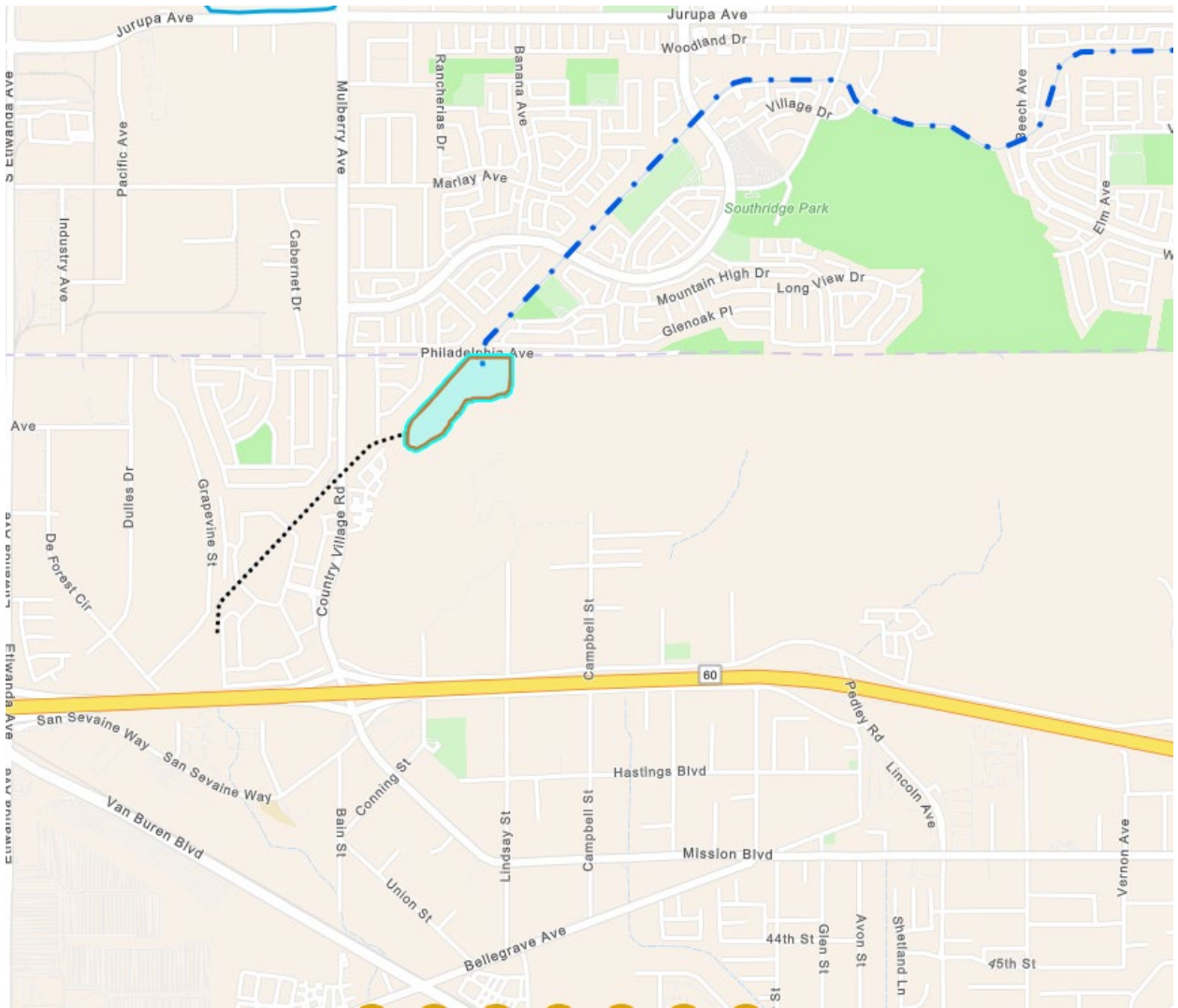
Turner Basins Channel



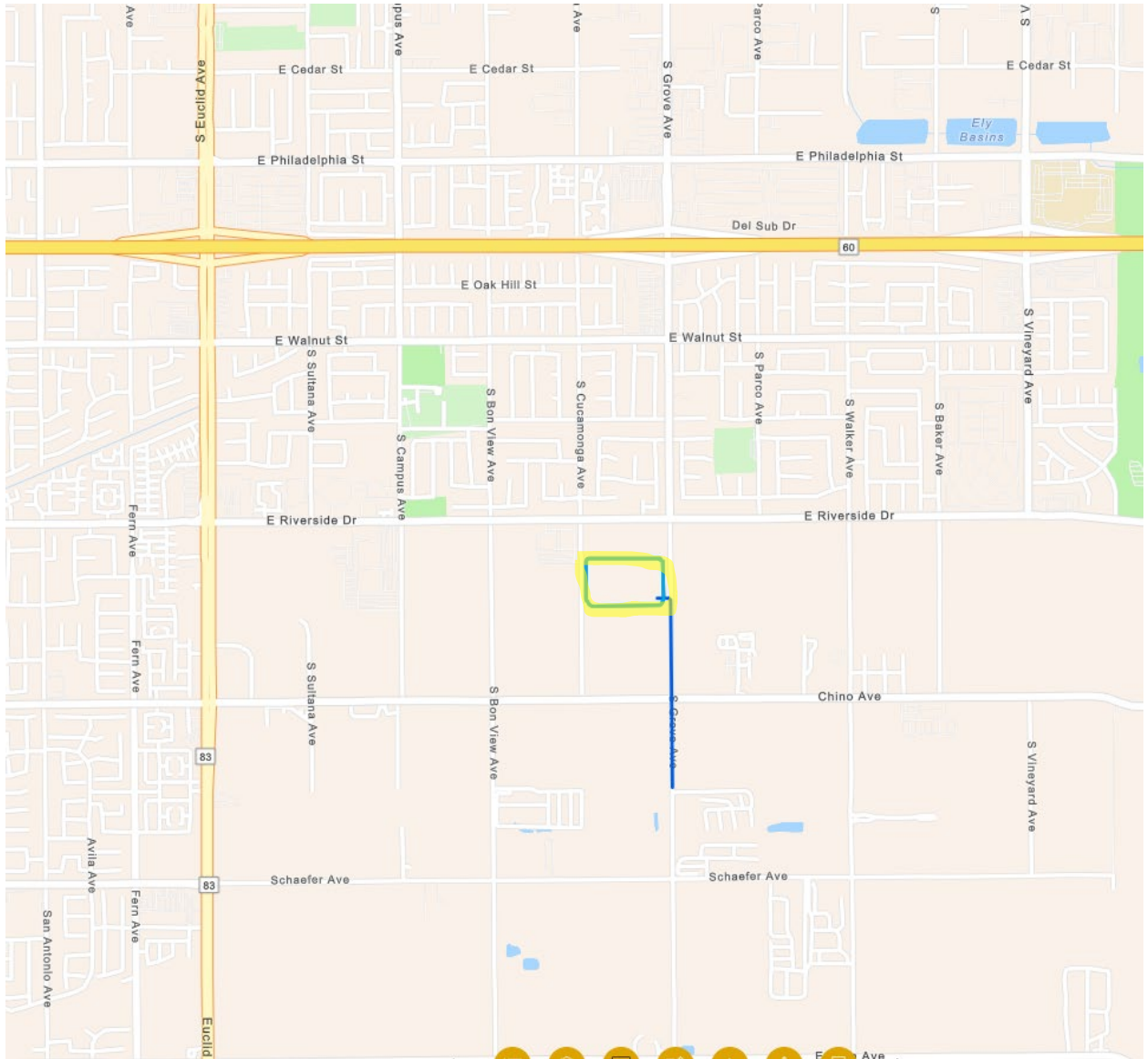
Lower Cucamonga Spreading Grounds:



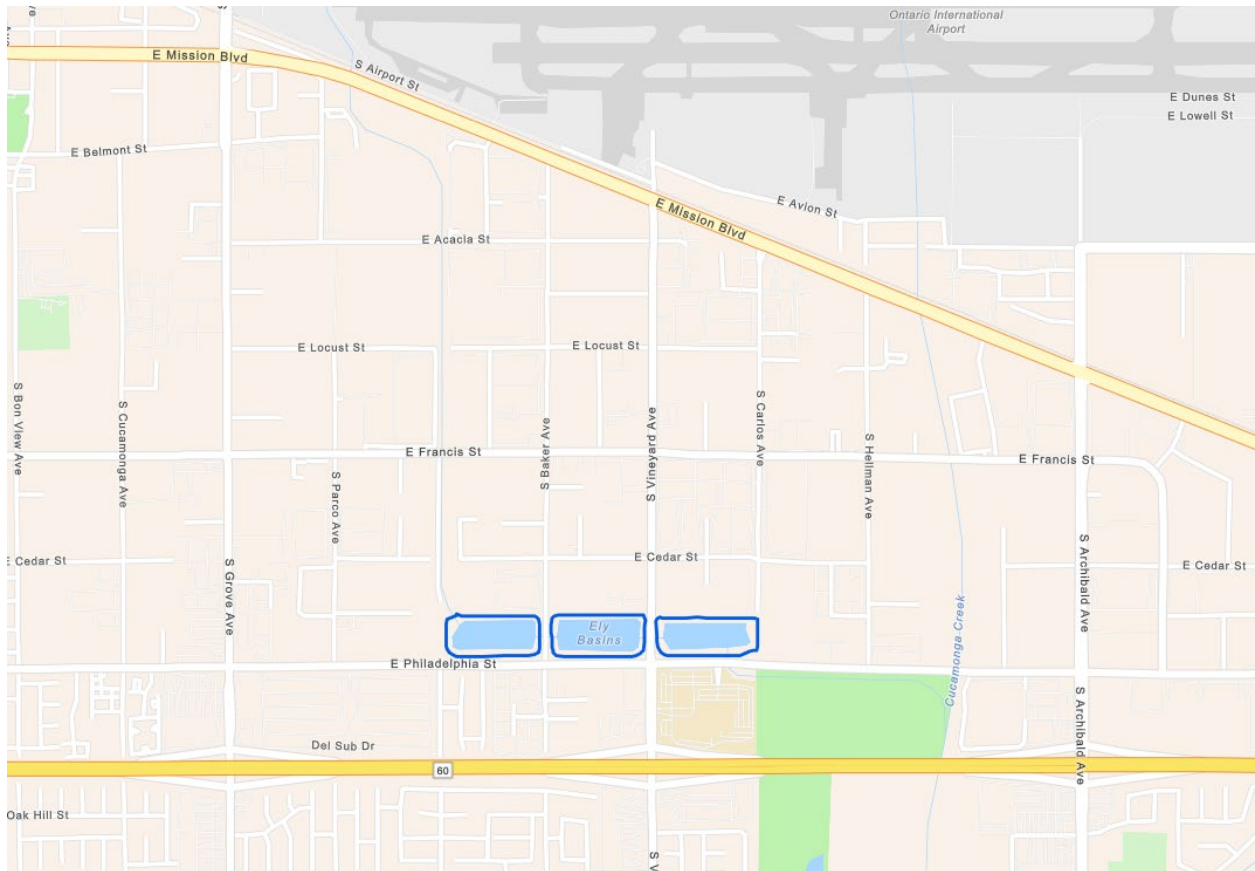
Declez Basin



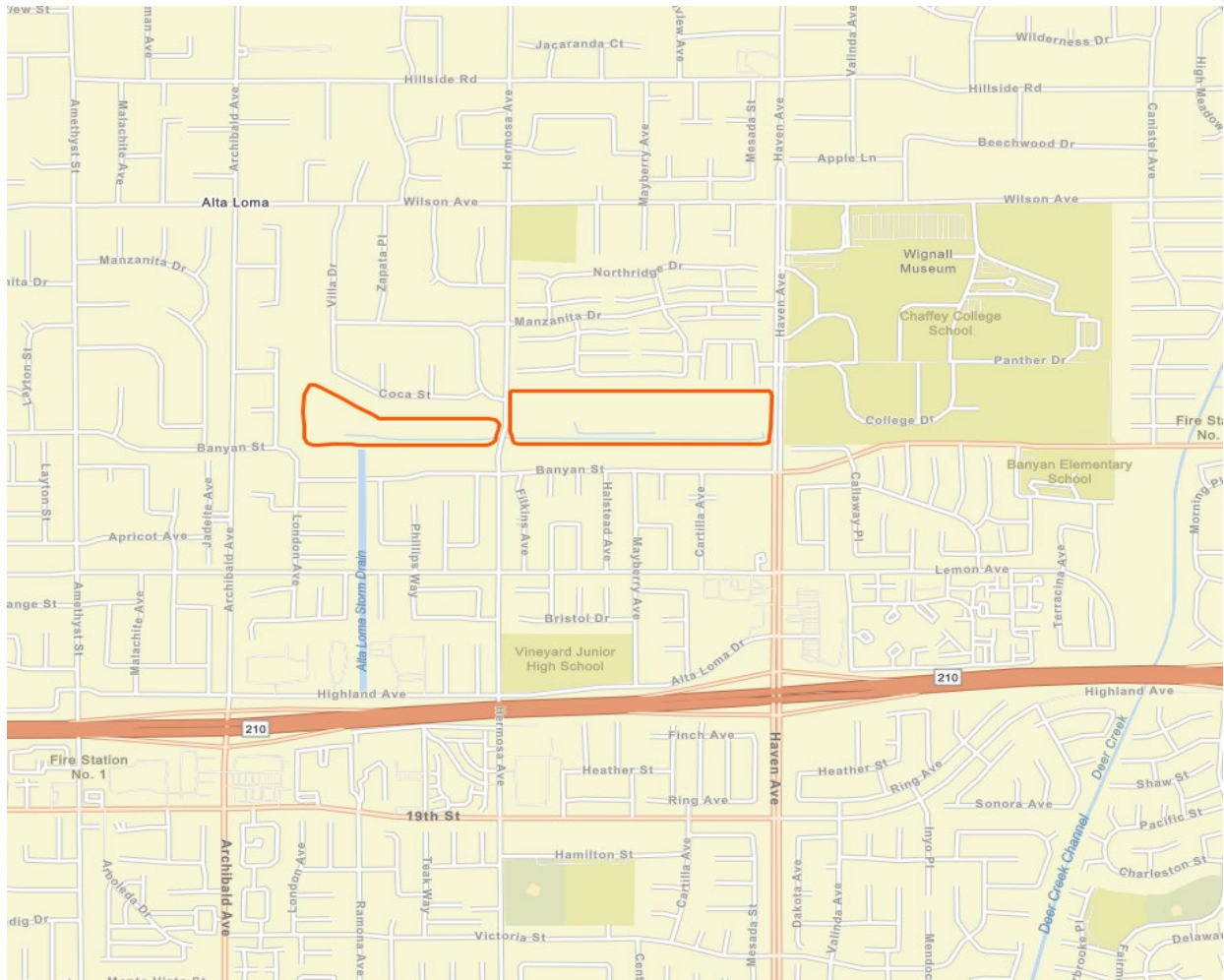
Grove Basin



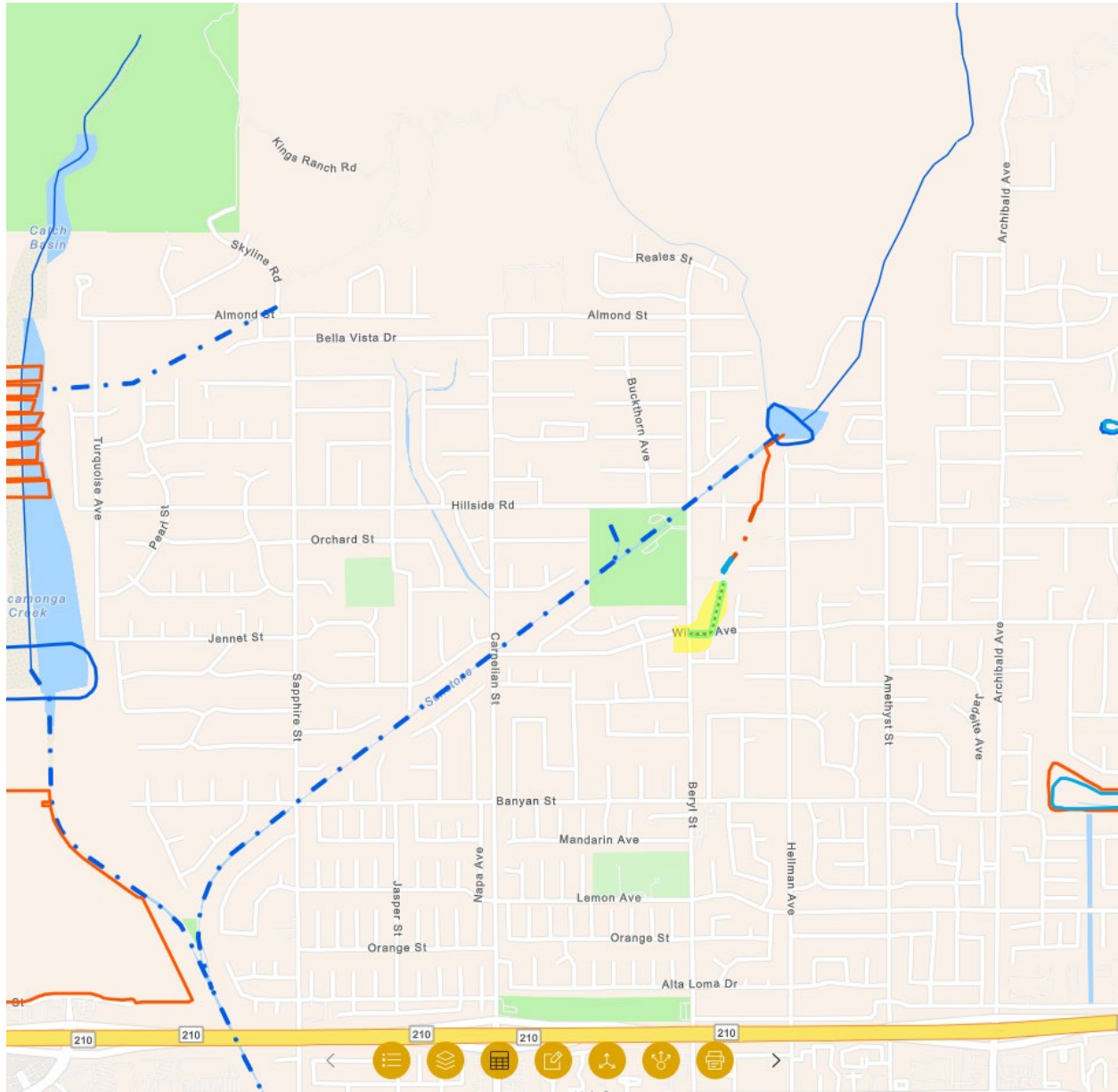
Ely Basins



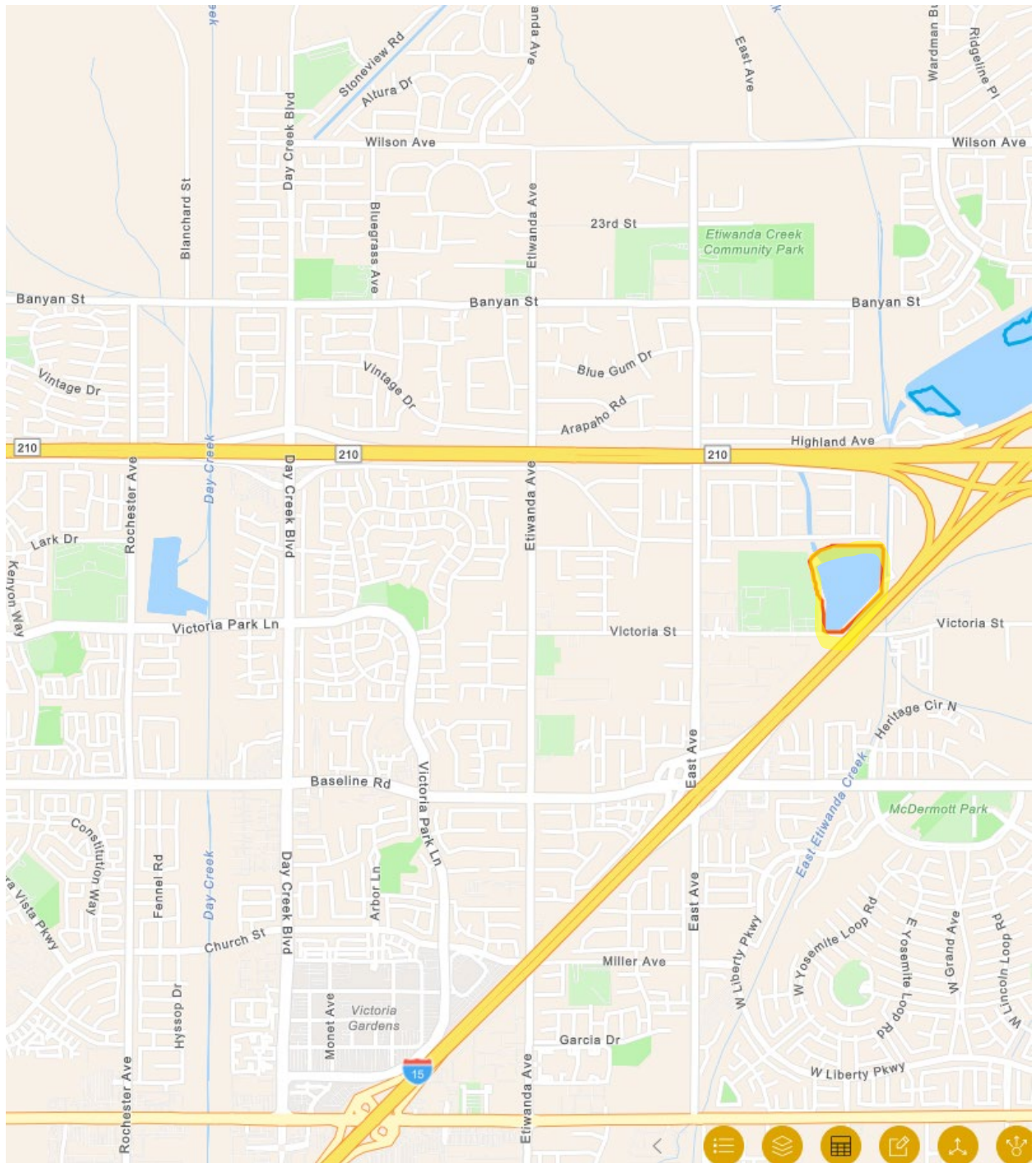
Alta Loma Basins #1,2



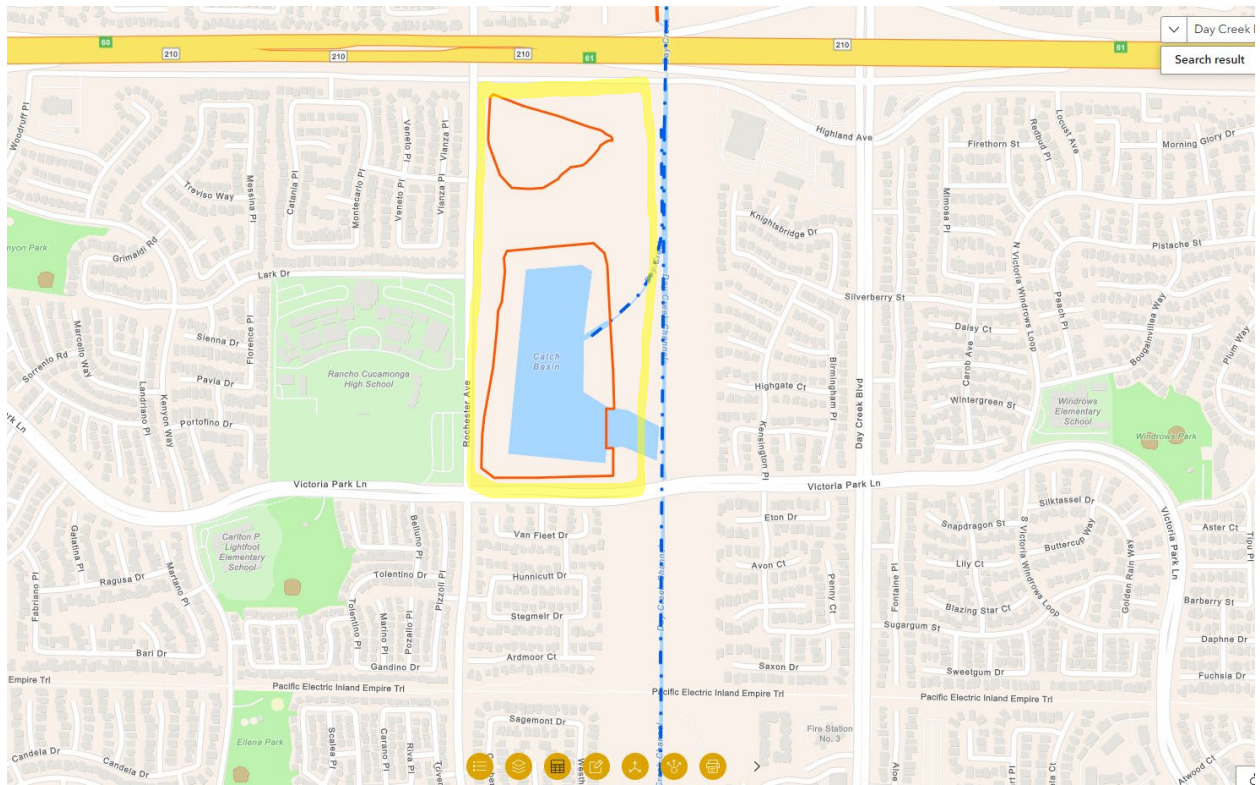
Demens Basin Channel:



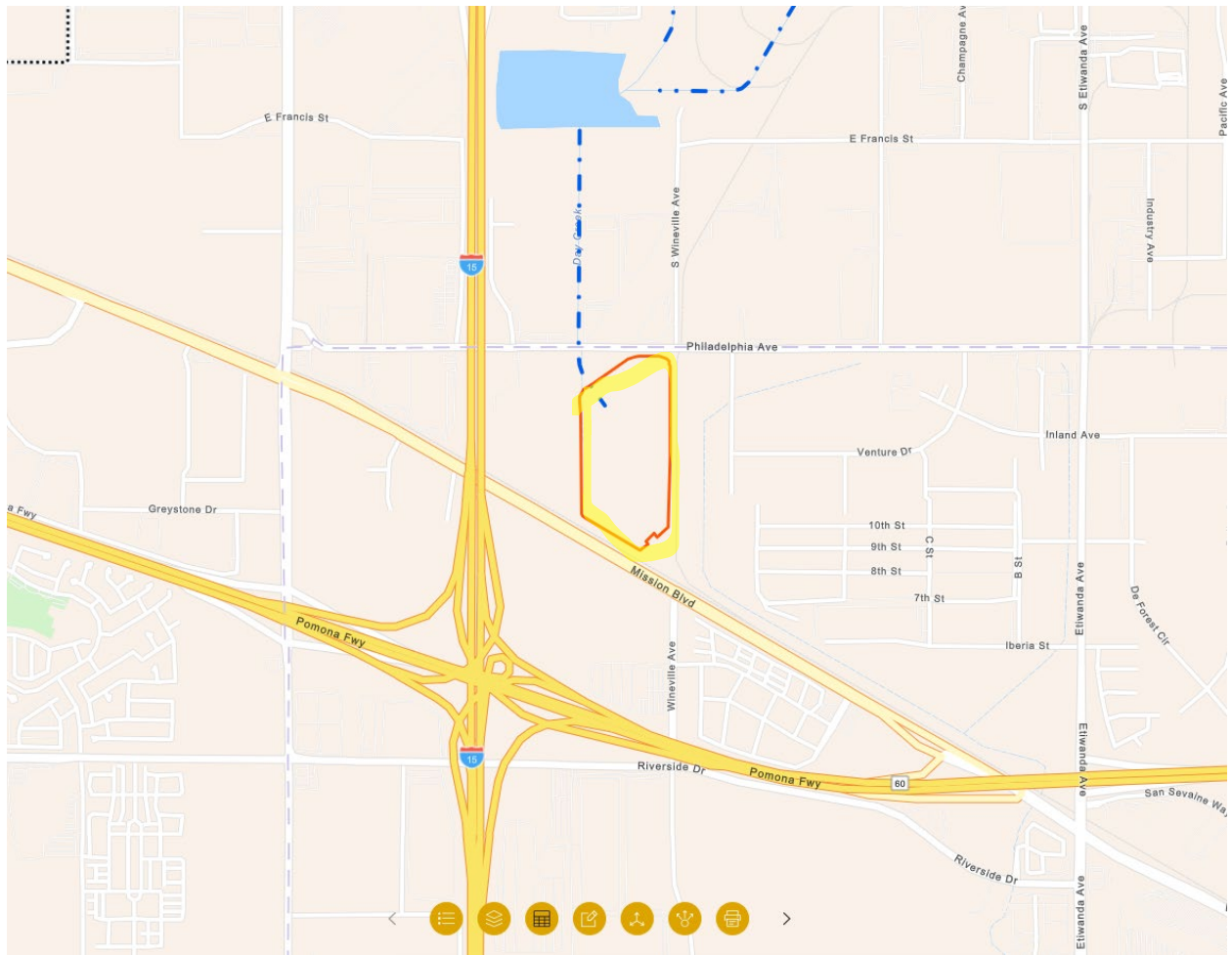
Victoria Basin



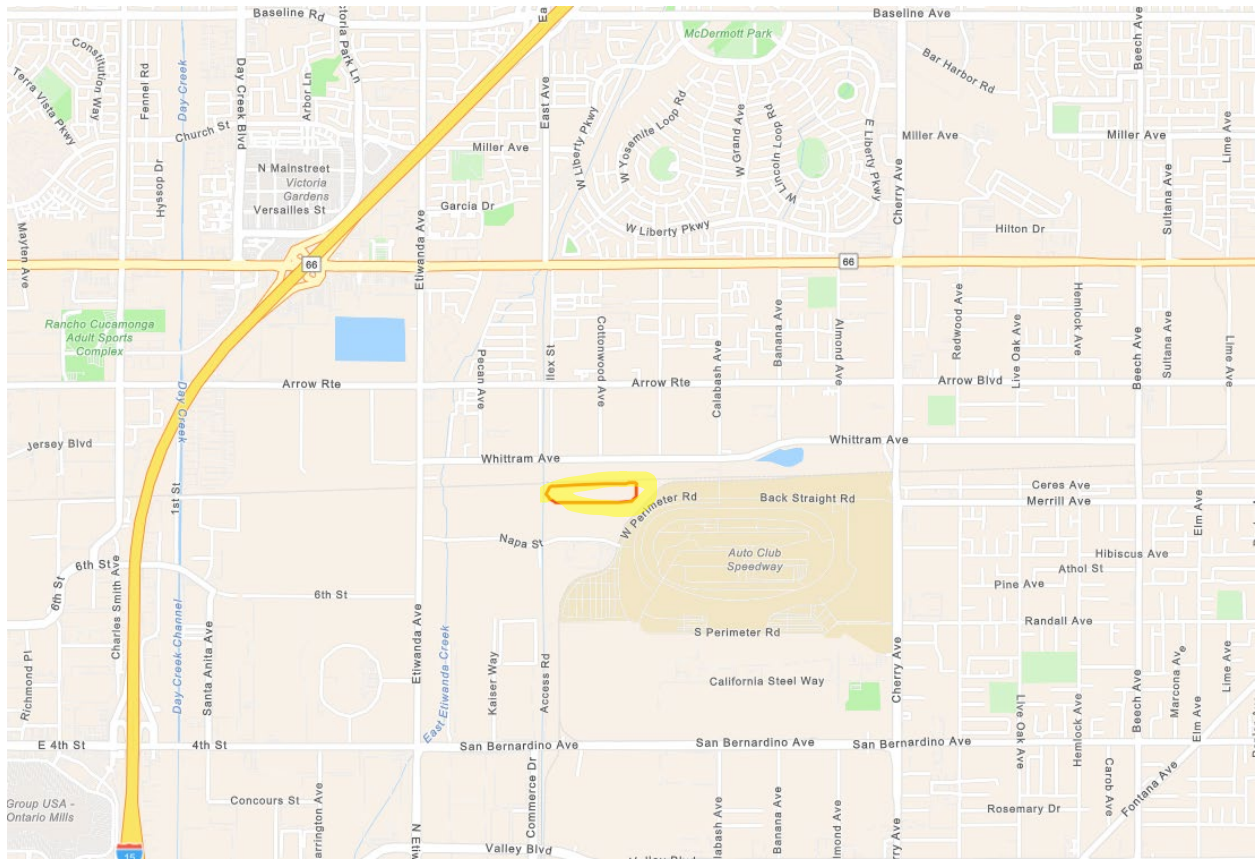
Day Basins



Riverside Basin



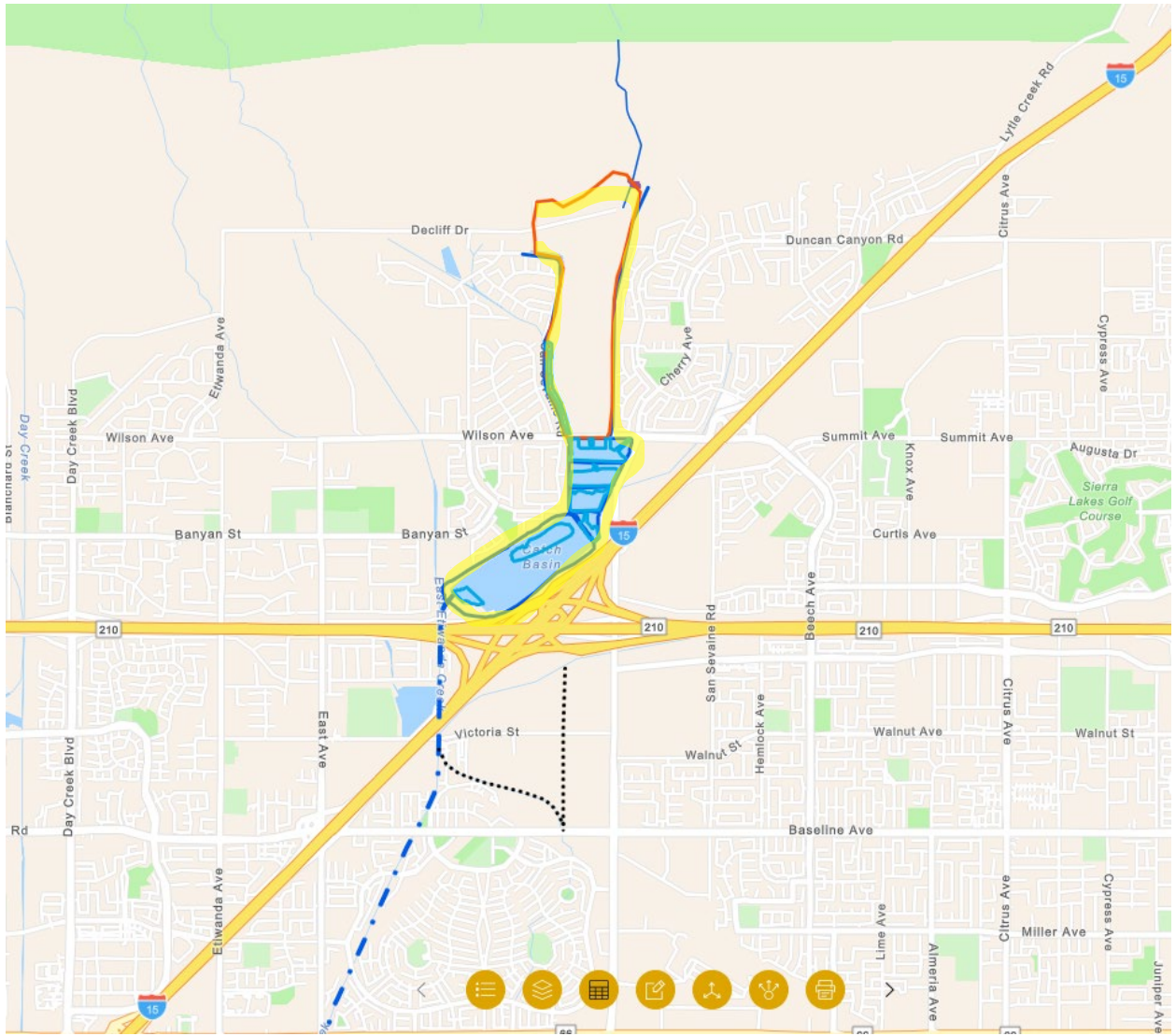
Hickory Basin



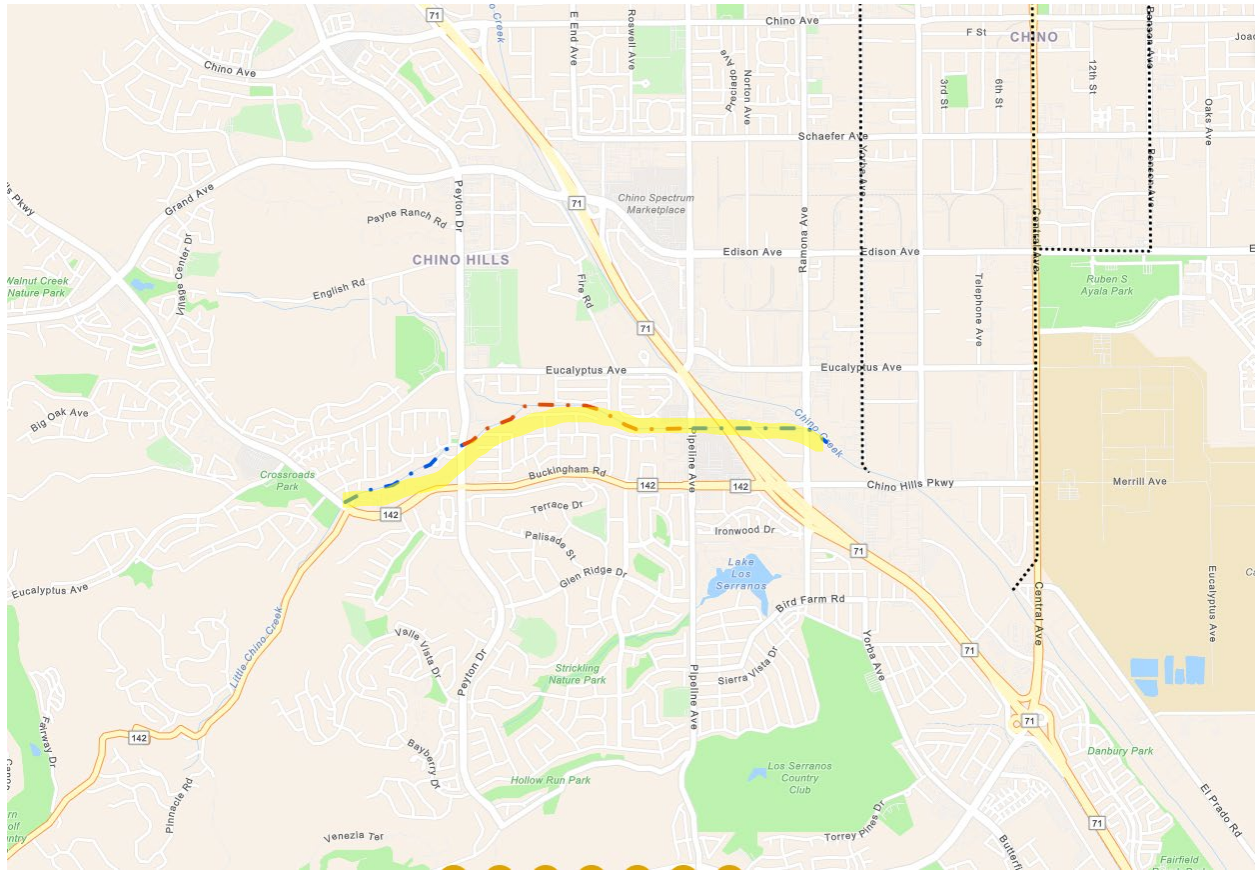
Hickory Basin



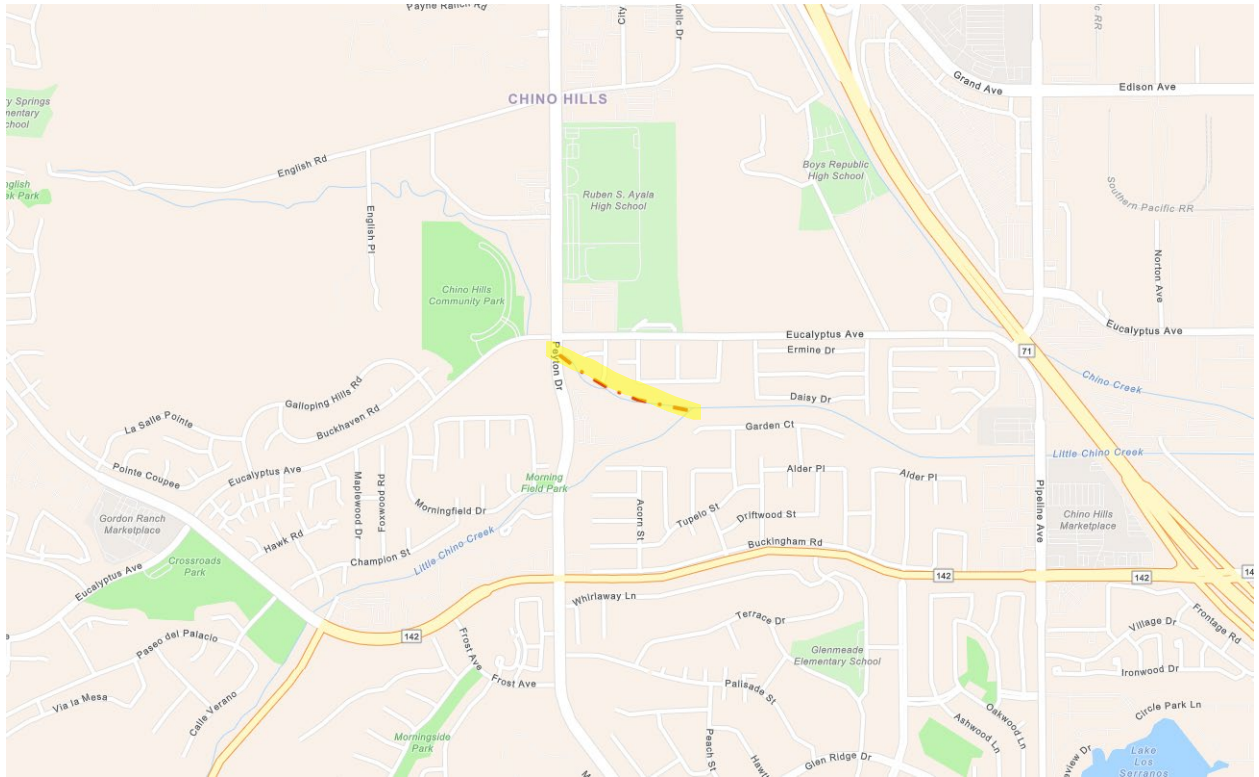
San Seavaine Basins 1,2,3,4,5 and Spreading Ground



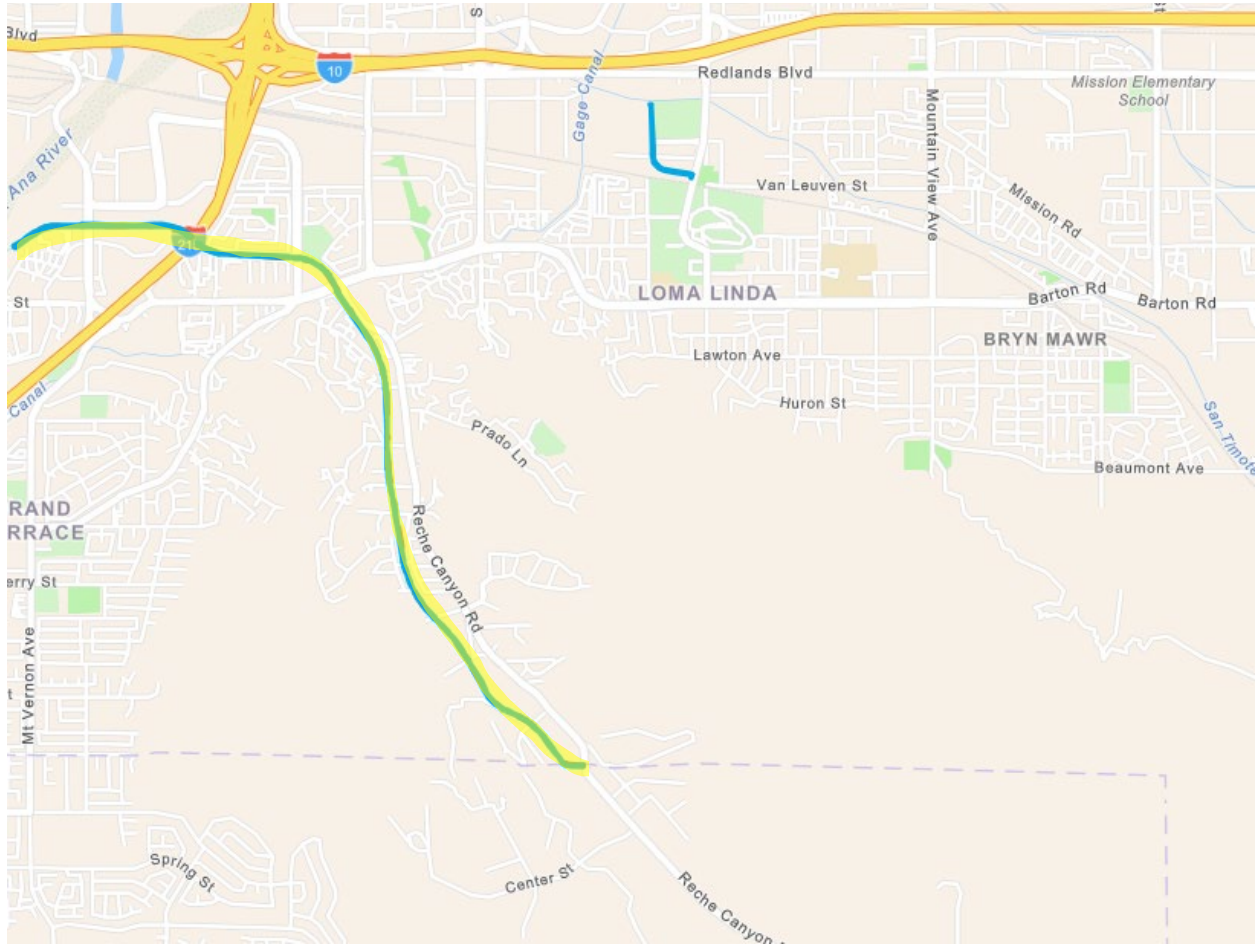
Carbon Canyon Channel



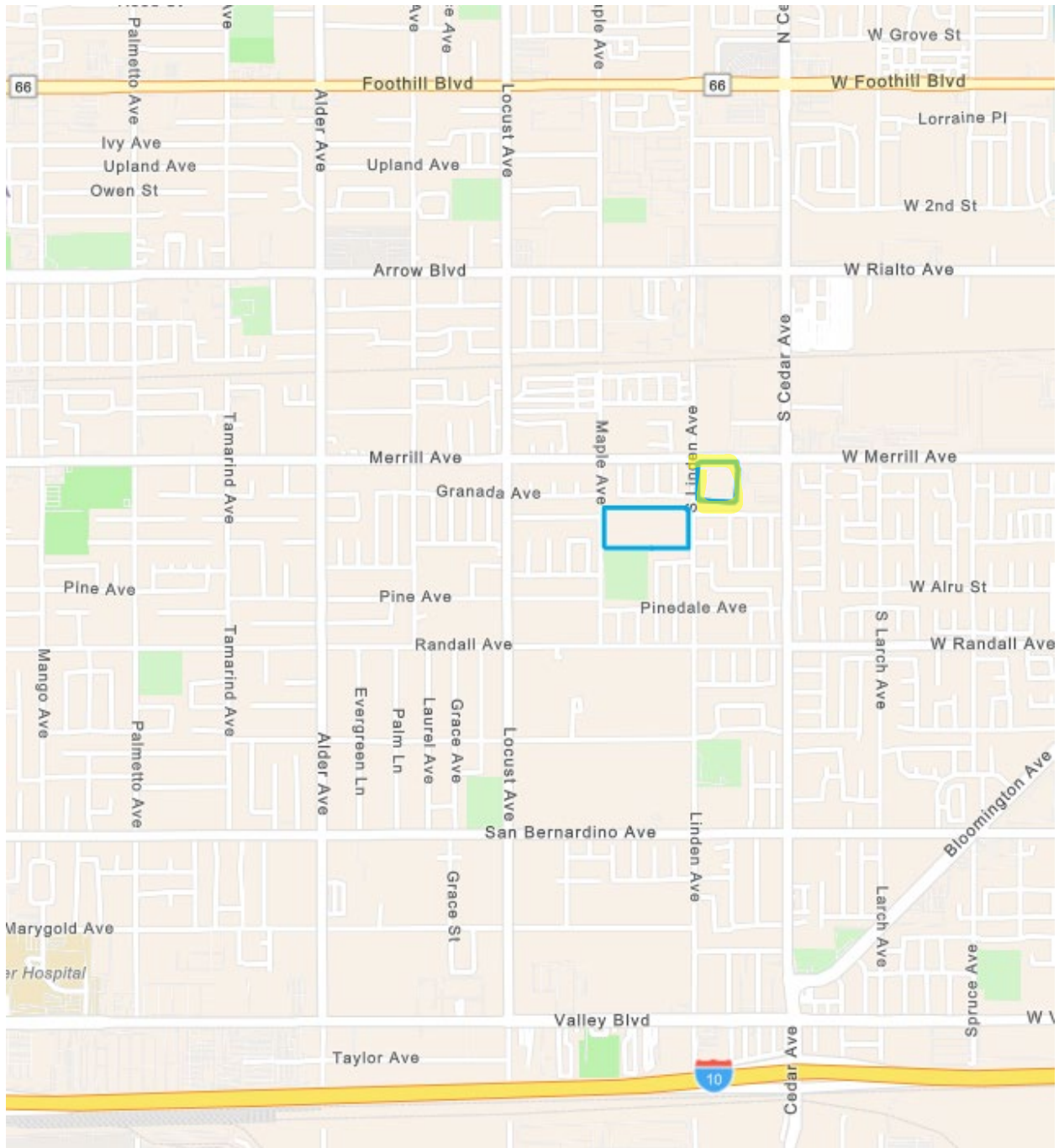
English Channel



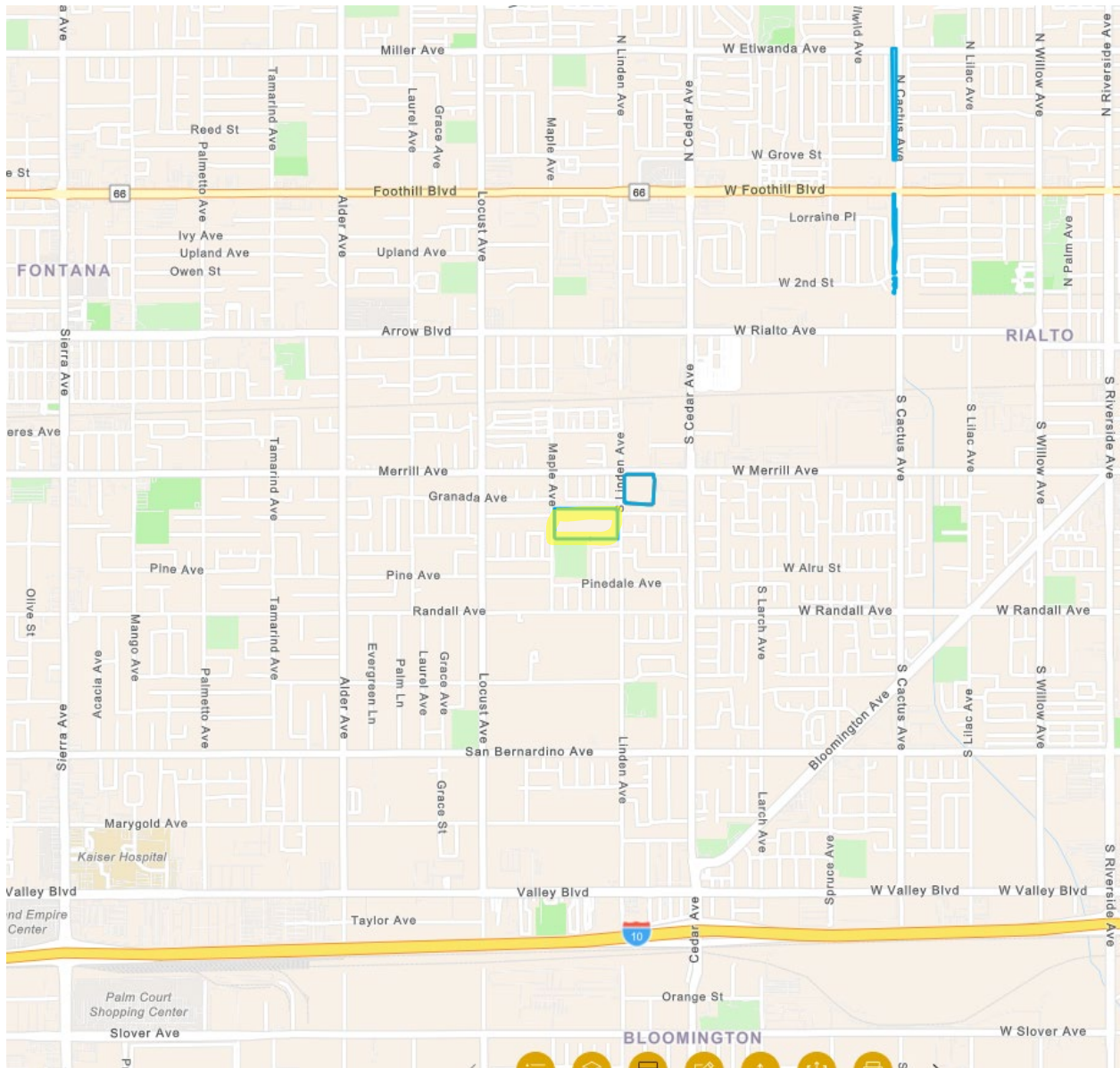
Reche Channel



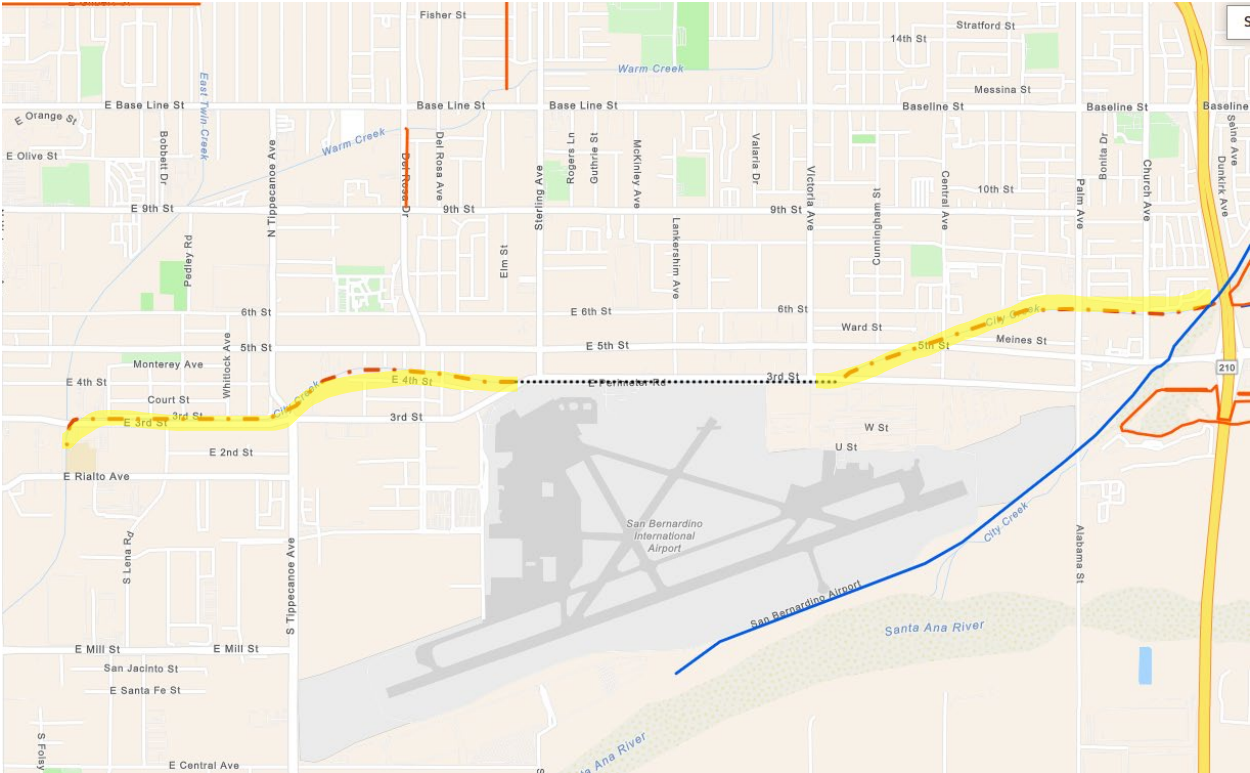
Merrill Basin



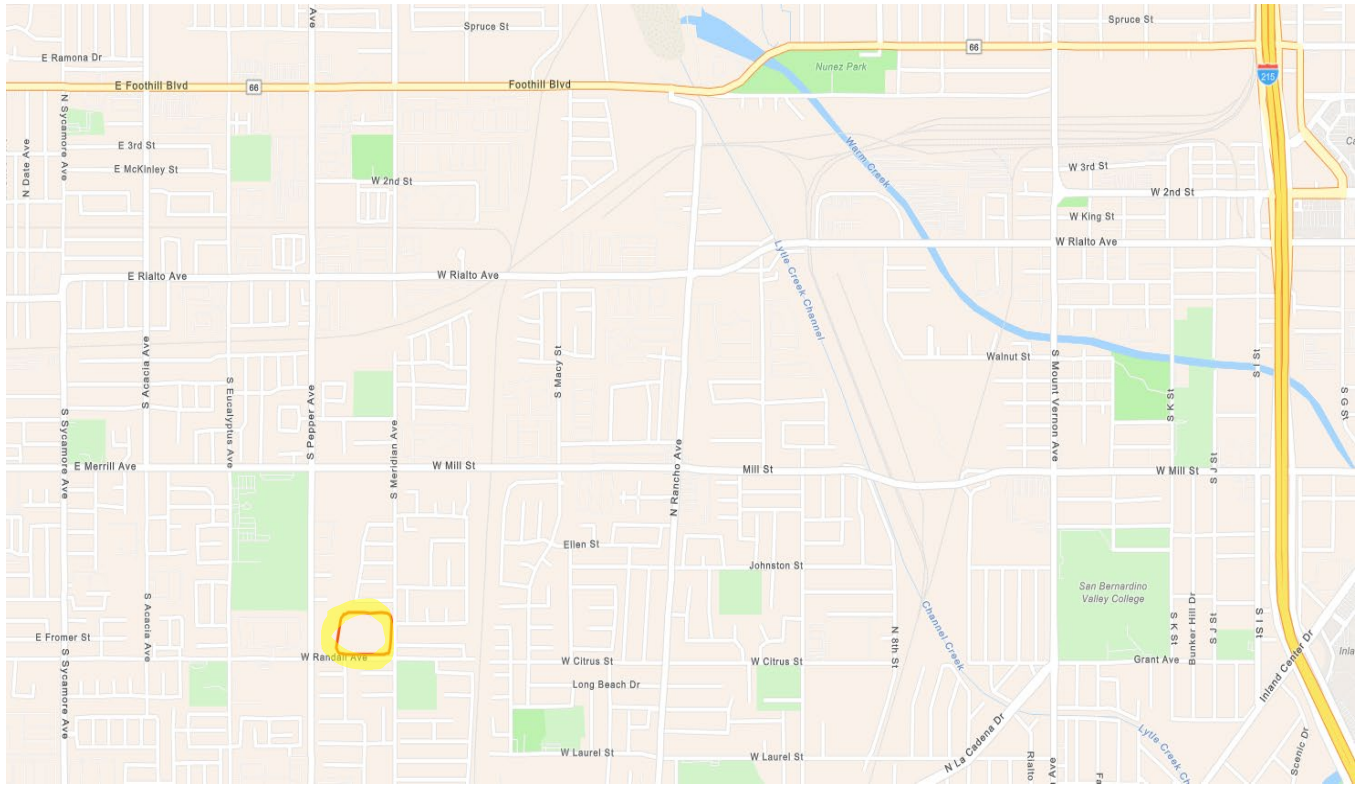
Linden Basin



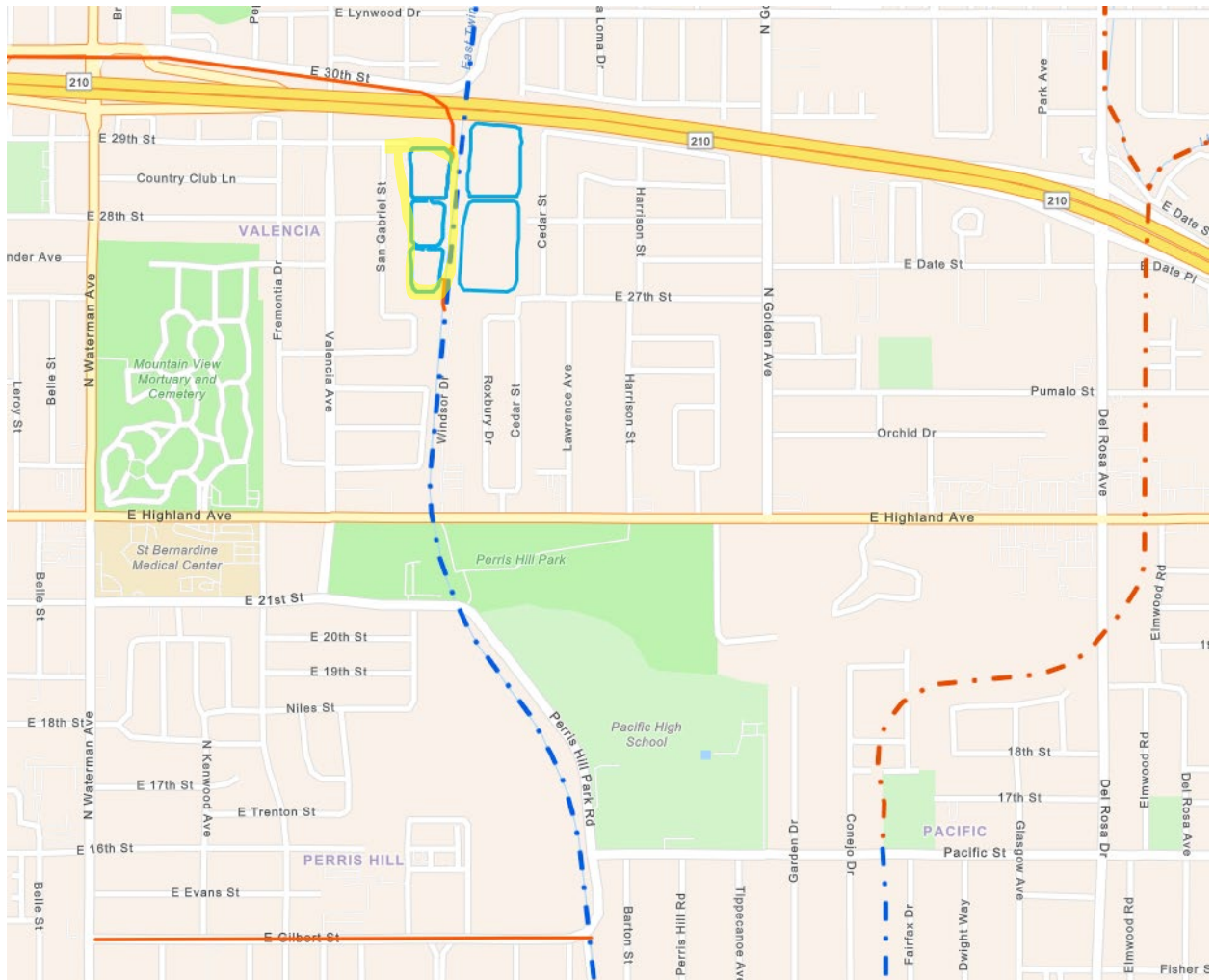
City Creek Channel



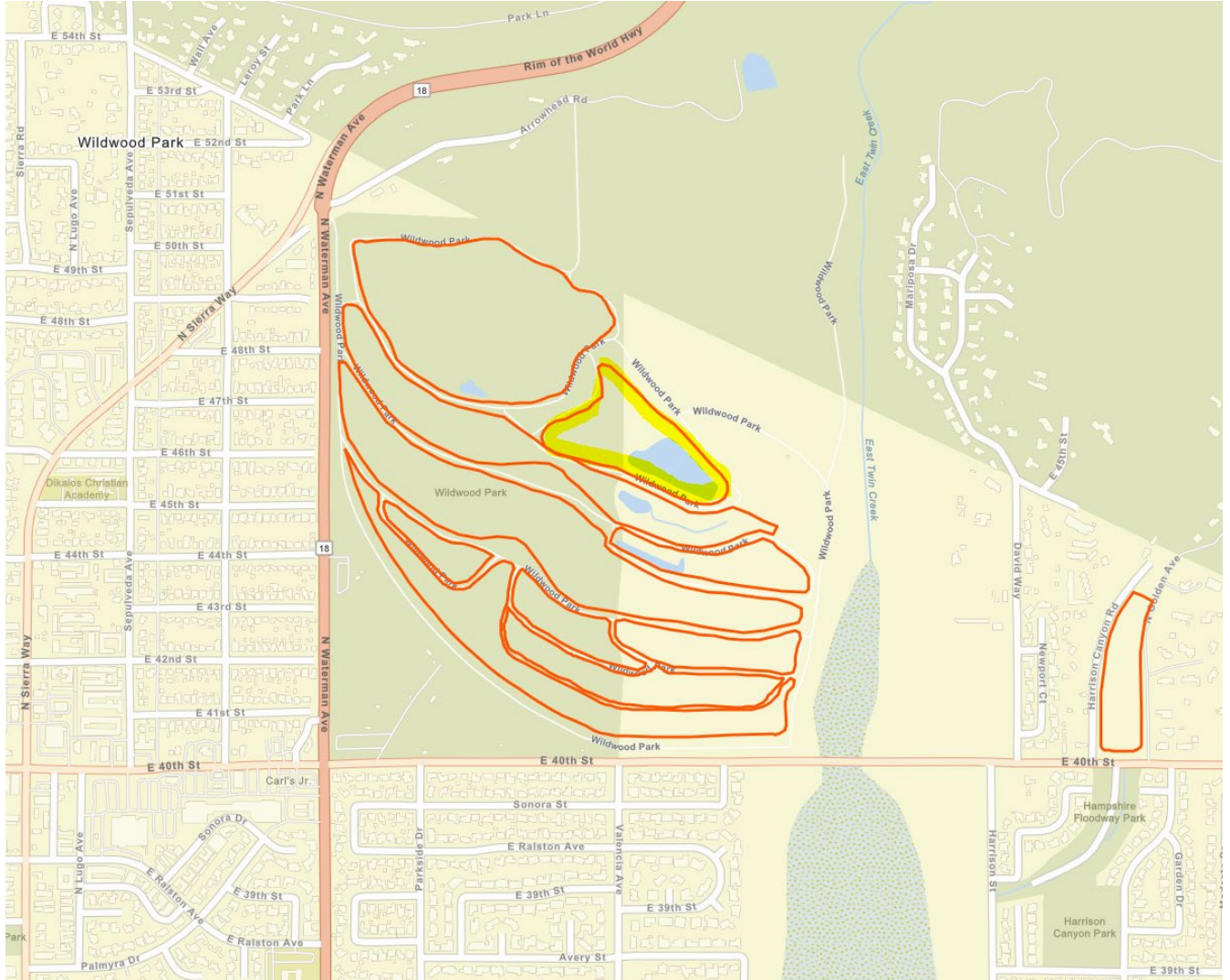
Randall Basin



29th Street Basins



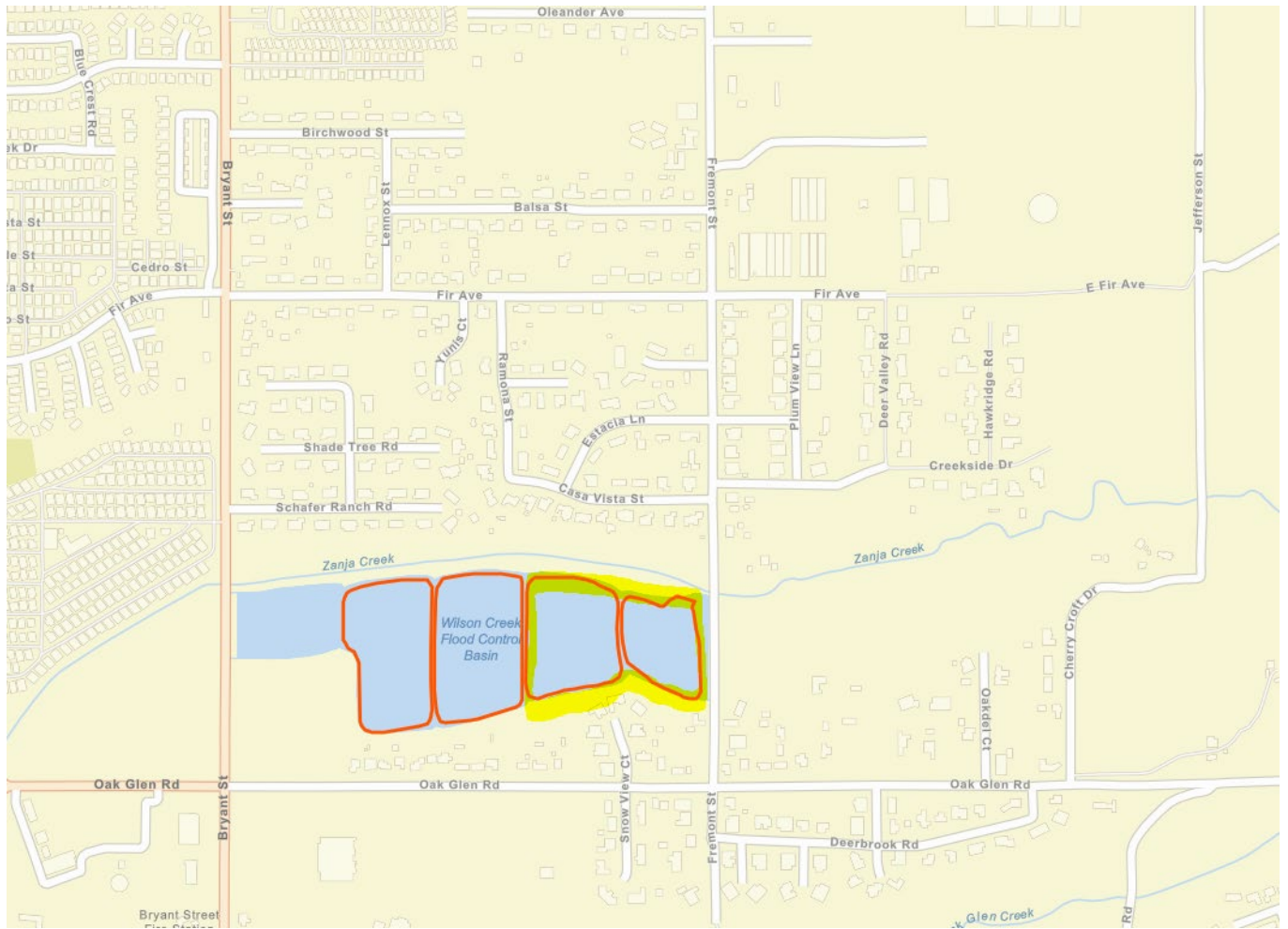
Waterman Basin #1 East



Oak Glen Creek Basins



Wilson Basins



Brown's Ditch Basin



Loma Linda Storm Drain

