

PHASE I CULTURAL RESOURCES ASSESSMENT

**FRENCH VALLEY COMMERCIAL RETAIL PROJECT
ASSESSOR'S PARCEL NUMBER 963-070-018/PPT200033
RIVERSIDE COUNTY, CALIFORNIA**

LSA

July 2021

PHASE I CULTURAL RESOURCES ASSESSMENT

**FRENCH VALLEY COMMERCIAL RETAIL PROJECT
ASSESSOR'S PARCEL NUMBER 963-070-018/PPT200033
RIVERSIDE COUNTY, CALIFORNIA**

Prepared on Behalf of:

Joseph A. Cross, Manager
Cross Engineering Services, LLC.
203 West Main Street, Suite F3
Lexington, South Carolina 29072

Prepared for:

County of Riverside, Planning Department
4080 Lemon Street, 12th Floor
Post Office Box 1409
Riverside, California 92502-1409
(951) 955-3200

Prepared by:

Riordan Goodwin, RA
LSA Associates, Inc.
1500 Iowa Avenue, Suite 200
Riverside, California 92507

LSA Project No. EGR2101

National Archaeological Data Base Information:

Type of Study: Pedestrian Survey

Sites Recorded: None

USGS 7.5' Quadrangle: Bachelor Mountain, California

Acreage: 2.47 acres

Keywords: Negative Results



July 2021

MANAGEMENT SUMMARY

LSA was retained by Cross Engineering Services, LLC to conduct a Phase I Cultural Resources Assessment for the proposed French Valley Commercial Retail Project (Case Number: PPT200033) in the County of Riverside (County), California. This work was completed pursuant to the California Environmental Quality Act (CEQA), Section 106 of the National Historic Preservation Act (NHPA), and the requirements of the County.

Preliminary research, a records search, field survey, and Native American scoping were conducted for this assessment of the project area. Although no cultural resources are documented within the project area and none were identified by the survey, it is bracketed by 15 prehistoric resources within a ½ mile, including a portion of a large habitation site. Therefore, despite the disturbances, the sensitivity for subsurface resources is moderate and archaeological monitoring is recommended.

If human remains are encountered, State Health and Safety Code Section 7050.5 states that no further disturbance shall occur until the County Coroner has made a determination of origin and disposition pursuant to Public Resources Code Section 5097.98. The County Coroner must be notified of the find immediately. If the remains are determined to be Native American, the County Coroner would notify the Native American Heritage Commission (NAHC), which would determine and notify a Most Likely Descendant (MLD). With the permission of the landowner or his/her authorized representative, the MLD may inspect the site of the discovery. The MLD shall complete the inspection and make recommendations or preferences for treatment within 48 hours of being granted access to the site. The MLD recommendations may include scientific removal and nondestructive analysis of human remains and items associated with Native American burials, preservation of Native American human remains and associated items in place, relinquishment of Native American human remains and associated items to the descendants for treatment, or any other culturally appropriate treatment.

TABLE OF CONTENTS

| | |
|--|-----------|
| MANAGEMENT SUMMARY | i |
| TABLE OF CONTENTS | ii |
| APPENDICES | iii |
| FIGURE | iii |
| TABLE | iii |
| INTRODUCTION | 1 |
| PROJECT LOCATION AND DESCRIPTION..... | 1 |
| NATURAL SETTING | 3 |
| CLIMATE AND WATERSHED | 3 |
| BIOLOGY..... | 3 |
| GEOLOGY..... | 3 |
| CULTURAL SETTING | 4 |
| PREHISTORY | 4 |
| ETHNOGRAPHY | 4 |
| Cahuilla | 4 |
| Luiseño | 5 |
| HISTORY | 5 |
| Riverside County (from Lech 2016)..... | 6 |
| METHODS | 8 |
| RECORDS SEARCH | 8 |
| ADDITIONAL RESEARCH | 8 |
| FIELD SURVEY | 8 |
| NATIVE AMERICAN SCOPING | 8 |
| RESULTS | 9 |
| RECORDS SEARCH | 9 |
| ADDITIONAL RESEARCH | 9 |
| FIELD SURVEY | 9 |
| NATIVE AMERICAN SCOPING | 10 |
| RECOMMENDATIONS | 11 |
| CERTIFICATION | 12 |

REFERENCES13

APPENDICES

- A: PERSONNEL QUALIFICATIONS
- B: RECORDS SEARCH BIBLIOGRAPHY
- C: NATIVE AMERICAN SCOPING RECORD
- D: LEVEL OF SIGNIFICANCE CHECKLIST

FIGURE

Figure 1: Project Regional and Project Location 2

TABLE

Table A: Cultural Resources within a Half Mile 9

INTRODUCTION

LSA was retained by Cross Engineering Services, LLC to conduct a Phase I Cultural Resources Assessment for the proposed French Valley Commercial Retail Project (Case Number: OAPL 2100143/PPT200033) in the County of Riverside (County), California. The County requires that the project be in compliance with the California Environmental Quality Act (CEQA); Public Resources Code (PRC), Division 13 (Environmental Quality), Chapters 2.6, Section 21083.2 (Archaeological Resources) and 2.6, Section 21084.1 (Historical Resources); and the *State CEQA Guidelines*, California Code of Regulations (CCR) Title 14, Chapter 3, Article 5 Section 15064.5 (Determining the Significance of Impacts on Historical and Unique Archaeological Resources).

PROJECT LOCATION AND DESCRIPTION

The project area is on Borel Road and is bounded by commercial development to the north, south, and west and residential development to the east. The project is depicted on the United States Geological Survey (USGS) *Bachelor Mountain, California* topographic quadrangle map in Township 7 South, Range 2 West, Section 6, San Bernardino Baseline and Meridian (USGS 1978; Figure 1). The 2.47-acre project area is within Assessor's Parcel Number (APN) 963-070-018. The proposed project is a drive-through restaurant, carwash, and associated parking.

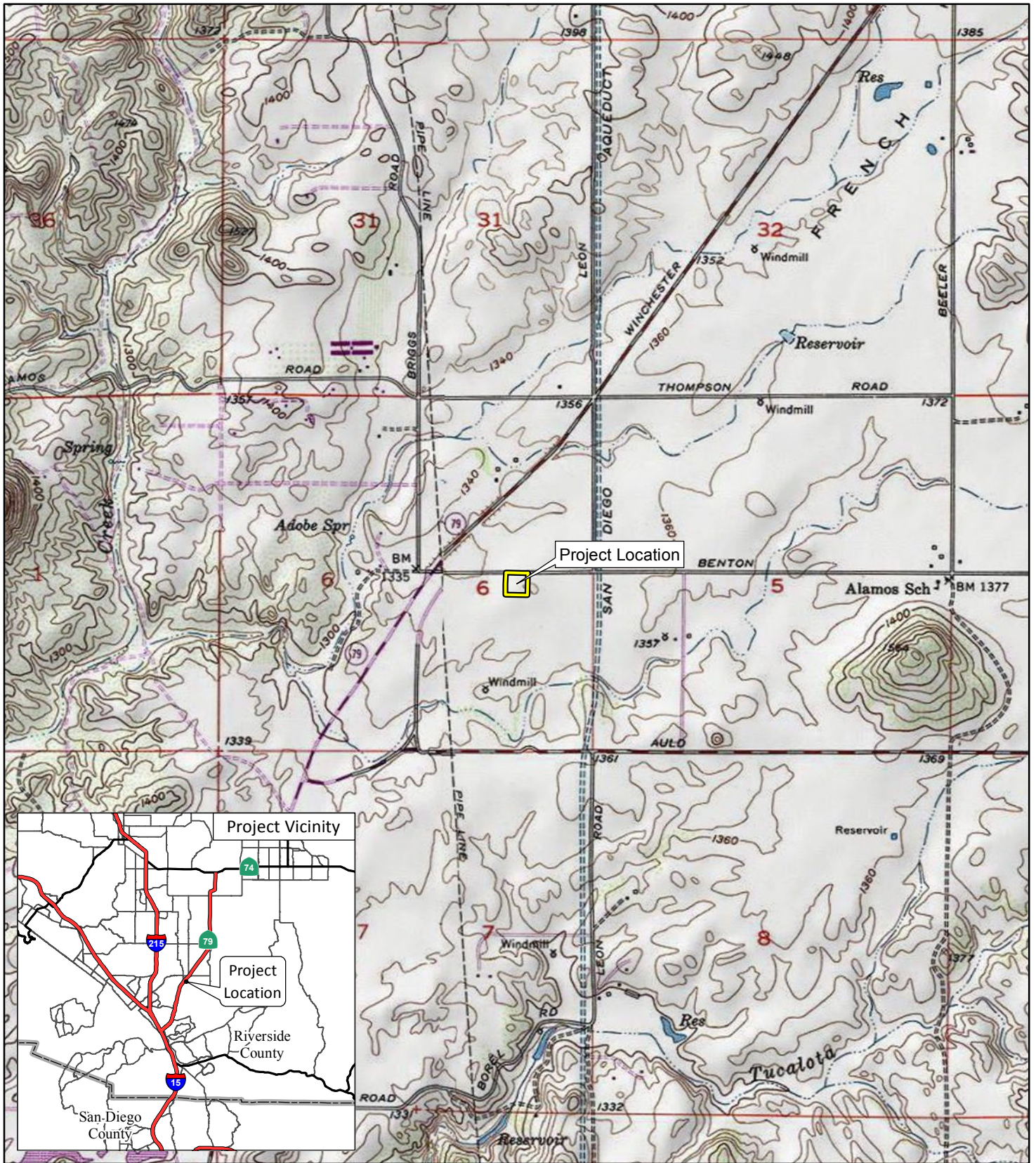


FIGURE 1

LSA

LEGEND

 Project Location



0 1000 2000
FEET

SOURCE: USGS 7.5' Quad - Murieta (1979), Bachelor Mtn (1978)

I:\EGR2101\GIS\MXD\ProjectLocation_USGS.mxd (5/16/2021)

French Valley
Commercial Retail Project
Project Location

NATURAL SETTING

CLIMATE AND WATERSHED

The project region is characterized by an arid climate, with dry, hot summers and moderate winters. Rainfall ranges from 4 to 8 inches annually (Beck and Haase 1974). Precipitation usually occurs in the form of winter rain, with warm monsoonal showers in summer. The project is approximately 1.3 miles north of the Whitewater River.

BIOLOGY

At an elevation of approximately 130 feet, the project is within the Lower Sonoran Life Zone of California (Schoenherr 1992), which ranges from below sea level to 3,500 feet. Plant species such as fiddleneck, mustard, prickly pear cactus, puncture vine, Russian thistle, and tamarisk, along with xeric grasses, were noted on the property. Extensive fauna are known locally, including many endemic species of reptiles, birds, and insects. Common animals of this region include rodents, rabbits, coyotes, raptors, reptiles, vultures, and insects.

GEOLOGY

The project area is located at the northern end of the Peninsular Ranges Geomorphic Province, a 900-mile long northwest-southeast trending structural block that extends from the Transverse Ranges to the tip of Baja California and includes the Los Angeles Basin (California Geological Survey 2002; Norris and Webb 1976). The province is approximately 225 miles wide, extending from the Colorado Desert in the east, across the continental shelf to the Southern Channel Islands (Santa Barbara, San Nicolas, Santa Catalina, and San Clemente) in the west (Sharp 1976). This region is characterized by a series of mountain ranges separated by northwest-trending valleys subparallel to faults branching from the San Andreas Fault. The geology of this province is similar to that of the Sierra Nevada, with granitic rock intruding into the older metamorphic rocks.

CULTURAL SETTING

PREHISTORY

Chronologies of prehistoric cultural change in Southern California area have been attempted numerous times, and several are reviewed in Moratto (2004). No single description is universally accepted as the various chronologies are based primarily on material developments identified by researchers familiar with sites in a particular region and variation exists essentially due to the differences in those items found at the sites. Small differences occur over time and space, which combine to form patterns that are variously interpreted.

Currently, two primary regional culture chronology syntheses are commonly referenced in the archaeological literature. The first, Wallace (1955), describes four cultural horizons or time periods: Horizon I – Early Man (9000–6000 BC), Horizon II – Milling Stone Assemblages (6000–3000 BC), Horizon III – Intermediate Cultures (3000 BC–AD 500), and Horizon IV – Late Prehistoric Cultures (AD 500–historic contact). This chronology was refined by Wallace (1978) using absolute chronological dates obtained after 1955.

The second cultural chronology, Warren, (1968) is based broadly on Southern California prehistoric cultures and was later revised by Warren (1984; Warren and Crabtree 1986). Warren's (1984) chronology includes five periods in prehistory: Lake Mojave (7000–5000 BC), Pinto (5000–2000 BC), Gypsum (2000 BC–AD 500), Saratoga Springs (AD 500–1200), and Protohistoric (AD 1200–historic contact). Changes in settlement pattern and subsistence focus are viewed as cultural adaptations to a changing environment, which begins with gradual environmental warming in the late Pleistocene, continues with the desiccation of the desert lakes, followed by a brief return to pluvial conditions, and concludes with a general warming and drying trend, with periodic reversals that continue to the present (Warren and Crabtree 1986).

ETHNOGRAPHY

The project area is near the intersection of the traditional cultural territories of the Cahuilla and Luiseño (Kroeber 1925; Heizer 1968; Heizer and Elsasser 1980). Tribal territories were somewhat fluid and changed over time. The first written accounts of these Southern California tribes are attributed to the mission fathers, and later documentation was by others indicated below.

Cahuilla

The territory of the Cahuilla ranged from the San Bernardino Mountains south to Borrego Springs and the Chocolate Mountains, from Orocopia Mountain to the east, to the San Jacinto Plain and Palomar Mountain to the west (Bean 1978). Cahuilla territory lies within the geographic center of Southern California and encompassed diverse environments ranging from inland river valleys and foothills to mountains and desert (Bean and Shipek 1978).

Cahuilla villages, generally located near water sources within canyons or near alluvial fans, comprised groups of related individuals, generally from a single lineage, and the territory around the village was owned by the villagers (Bean 1978). Like other Native American groups in Southern

California, the Cahuilla were semi-nomadic peoples leaving their villages and utilizing temporary campsites to exploit seasonably available plant and animal resources (James 1960).

Cahuilla subsistence was based primarily on acorns, honey mesquite, screw beans, piñon nuts, and cactus fruit, supplemented by a variety of wild fruits and berries, tubers, roots, and greens (Kroeber 1925; Heizer and Elsasser 1980). Hunting deer, rabbit, antelope, bighorn sheep, reptiles, small rodents, quail, doves, ducks, and reptiles by means of bows, throwing sticks, traps, and communal drives is documented (James 1960).

The Cahuilla were documented by Barrows (1900), Hooper (1920), and Strong (1929), among others.

Luiseño

The territory of the Luiseño extended along the coast from Agua Hedionda Creek to the south, Aliso Creek to the northwest, and the Elsinore Valley and Palomar Mountain to the east. These territorial boundaries were somewhat fluid and changed through time. They encompassed an extremely diverse environment that included coastal beaches, lagoons and marshes, inland river valleys and foothills, and mountain groves of oaks and evergreens (Bean and Shipek 1978).

The Luiseño lived in small communities, which were the focus of family life. Patrilineally linked, extended families occupied each village (Kroeber 1925; Bean and Shipek 1978). Luiseño villages were politically independent and were administered by a chief who inherited his position from his father. Luiseño villages generally were located in valley bottoms, along streams, or along coastal strands near mountain ranges sheltered in coves or canyons, near a water source, and in a location that was easily defended.

The Luiseño took advantage of the varied resources available. Luiseño subsistence was based primarily on seeds (e.g., acorns, grass seed, manzanita, sunflower, sage, chía, and pine nuts) that were dried and ground to be cooked into a mush. Their diet also included game animals (e.g., deer, rabbit, jackrabbit, wood rat, mice, antelope, and many types of birds) (Bean and Shipek 1978). They established seasonal camps along the coast and near bays and estuaries to gather shellfish and hunt waterfowl; and they utilized fire for crop management and engaged in communal rabbit drives (Bean and Shipek 1978).

The Luiseño documented by Sparkman (1908), Kroeber (1925), White (1963), Oxendine (1983), and others.

HISTORY

In California, the historic era is generally divided into three periods: the Spanish Period (1769 to 1821), the Mexican Period (1821 to 1848), and the American Period (1848 to present).

During the Spanish Period, initial exploration of the Riverside County area was slow until Lieutenant Pedro Fages (then the military governor of San Diego) crossed through the San Jacinto Valley in 1772. Riverside County proved to be too far inland to include any missions or *asistencias* within its

limits, although both San Luis Rey and San Juan Capistrano (established in 1776 and 1798, respectively) claimed a large part of southwestern Riverside County.

In 1821, Mexico overthrew Spanish rule initiating the Mexican Period in which the missions declined. In 1833, the Mexican government passed the Secularization Act and the missions, reorganized as parish churches, lost their vast land holdings and released their neophytes. Secular ranchos were subsequently established that were predominantly devoted to cattle, with great tracts of land used for grazing. Until the Gold Rush of 1849, livestock and horticulture dominated the economics of California (Ingersoll 1904; Beattie and Beattie 1951). Sixteen ranchos were granted in Riverside County, none of which included the project area.

The American Period began with the 1848 Treaty of Guadalupe Hidalgo that concluded the Mexican-American War. The discovery of gold at Sutter's Mill the following year initiated a deluge of migration to California that would increase with the completion of the Transcontinental Railroad at the end of the 1860s. Although cattle ranching remained an important part of the regional economy, it was not an efficient or particularly lucrative use of arable land and, along with typically ephemeral mineral resources, was supplanted by agriculture as the state's economic base.

Riverside County (from Lech 2016)

The Southern Pacific Railroad completed its line from Los Angeles through the San Geronio Pass in 1876 bringing settlers into southwestern San Bernardino County, creating a boom of agricultural and land development during the 1880s. Although the towns of San Bernardino and Riverside (established in 1851 and 1870, respectively) both benefitted from the boom, by the last decade of the 19th century, social, political, and economic friction developed between the two communities; Riverside was Republican and temperance minded, while San Bernardino was predominantly Democratic, had no prohibition on saloons and was secessionist during the Civil War. Both towns were also vying for settlers and spheres of influence in an era in which some neighboring communities were either stagnating or being abandoned. After litigation alleging preferential use of tax revenues by San Bernardino, Riverside residents joined (then) San Diego County residents in the Temecula and San Jacinto Valleys and the desert region (who disliked the great distance to their county seat) successfully petitioning the State legislature to form Riverside County in 1893. The County thrived on its agricultural economy until the mid-1940s, after which there was a gradual transition toward manufacturing, construction, commerce, transportation, and ultimately suburban development.

French Valley

The first Euro-Americans to occupy the area that would become known as French Valley were French and French-speaking Swiss shepherds and farmers such as the Alexandre, Giagnaire, Labrucheie, Nicolas, and Vial families in the 1860s. Later settlement was accomplished in the last decades of the 19th century by the prominent families listed below (Gunther 1988; McBurney and Milholland 2009). The community included grain farmers, cattle and horse ranchers. Agriculture and ranching remained the economic base of the area until the 1960s, when water district acquisitions and real estate development began to encroach on agricultural lands (McBurney and Milholland 2009).

Auld Valley/Post Office

The Auld family immigrated to California from Canada during the Gold Rush and ultimately settled in a valley that would be named for them adjoining the south end of French Valley during the last two decades of the 19th century (McBurney and Milholland 2009). The family consisted of farmers, cattle, horse, and poultry ranchers, and apiarists on 1,700 acres until the Metropolitan Water District (MWD) began acquiring their land in the mid-1960s (McBurney and Milholland 2009). A post office was opened to serve both Auld and French Valleys at the family's ranch east of the project area in 1899 but was relocated 10 miles north to Winchester 22 years later (Salley 1977).

Borel

The Borels were one of the earliest pioneer families to arrive in the Valley, establishing a grain farm along the road named after them in the 1870s. They ultimately farmed more than 10,000 acres in grain and grapevines (and were vintners) in the first half of the 20th century, but land was gradually sold off and the French Valley Airport would be established on land formerly owned by the Borel family at the end of the 1980s (Hunneman 2008; McBurney and Milholland 2009).

Pourroy

Pourroys were relative latecomers, establishing their ranch in the last years of the 19th century, but would continue farming in the Valley until the middle of the 20th century (McBurney and Milholland 2009).

Thompson

The Thompson family arrived in the Valley around the mid-1880s and by the end of the century, had established a ranch on several hundred acres along the road that bears their name (McBurney and Milholland 2009).

The transition of the community from a rural to suburban area was initiated by the development of the airport in 1989 and the establishment of a jail that what would become the Southwest Justice Center in the early 1990s (again, on former Borel Land). Subsequent suburban development encroached upon the remaining agricultural fields and open areas and continues to this day, further diminishing the rural character of the community.

METHODS

The goals of the cultural resources assessment were to determine (1) whether cultural resources are located within the project area, (2) what type of resources are present, and (3) the probability of future cultural resources discoveries within the project area. This was accomplished by completing a records search, additional research, a field survey, and Native American scoping.

RECORDS SEARCH

On May 18, 2021, a cultural resources records search was requested from the Eastern Information Center (EIC) at the University of California, Riverside.

ADDITIONAL RESEARCH

In May 2021, LSA Senior Archaeologist Riordan Goodwin (see Appendix A) conducted preliminary research utilizing data from a previous records search and reviewed historic period maps and aerial photographs of the project area.

FIELD SURVEY

Mr. Goodwin conducted the pedestrian survey for the project on May 21, 2021, by walking parallel transects spaced by approximately 10 meters. Soil profiles were examined for cultural stratigraphy, and rodent back dirt was checked for cultural remains. The project site was photographed using a digital format camera.

NATIVE AMERICAN SCOPING

LSA requested a Sacred Lands File (SLF) search for the project area from the Native American Heritage Commission (NAHC) on May 18, 2021.

RESULTS

RECORDS SEARCH

Data from the EIC indicate there have been 54 previous cultural resources studies conducted within a one-half mile radius of the project, two of which included portions of the project area (Cooley and Patterson 2008; Wilson et al. 2015) (See Appendix B). Eighteen cultural resources have been documented within one-half mile, including prehistoric and historic period archaeological resources (Table A). The nearest prehistoric resource (33-011809) was documented approximately 260 meters (850 feet) west of the project area.

Table A: Cultural Resources within a Half Mile

| Primary # | Trinomial # | Site Description |
|-------------------|-------------------|---|
| 33-000716 | CA-RIV-716 | Prehistoric large habitation site (Adobe Springs Village) |
| 33-002225 | CA-RIV-2225 | Prehistoric bedrock milling feature |
| 33-002227 | CA-RIV-2227 | Prehistoric bedrock milling features |
| 33-002970/-003839 | CA-RIV-2225/-3839 | Prehistoric milling features |
| 33-003409 | CA-RIV-3409 | Prehistoric milling feature |
| 33-005326 | CA-RIV-5326H | Historic period building foundations and related features |
| 33-005327 | CA-RIV-5327 | Prehistoric lithic scatter |
| 33-011809 | CA-RIV-11809 | Prehistoric isolated artifact |
| 33-013268 | CA-RIV-13268 | Historic period rock wall feature |
| 33-013871 | CA-RIV-13871 | Historic period road segment |
| 33-015851 | CA-RIV-15851 | Prehistoric milling feature |
| 33-015852 | CA-RIV-15852 | Prehistoric milling features |
| 33-016989 | CA-RIV-16989 | Prehistoric lithic scatter |
| 33-023913 | CA-RIV-23913 | Prehistoric isolated artifact |
| 33-028065 | CA-RIV-28065 | Prehistoric isolated artifact |
| 33-028066 | CA-RIV-28066 | Prehistoric minimal lithic deposit |
| 33-028067 | CA-RIV-28067 | Prehistoric isolated artifact |
| 33-028068 | CA-RIV-28068 | Prehistoric isolated artifact |

ADDITIONAL RESEARCH

Preliminary research revealed no resources have been documented within or adjacent to the project area and no buildings or structures were ever within the project area (Goodwin and Reynolds 2003) (Historic Aerials 2021).

FIELD SURVEY

Ground visibility was poor at approximately 20 percent with substantial obstruction by xeric vegetation. The project area is partially graded and appears moderately disturbed by earthmoving and weed-abatement activities. Modern refuse was noted throughout the project area. No cultural resources were identified.

NATIVE AMERICAN SCOPING

On June 2, 2021, the NAHC responded with negative results for the SLF search and a list of Tribes and individuals designated for consultation. LSA contacted all individuals on the list June 2 and 28, 2021. Responses were received from five Tribes:

- The Quechan Tribe of the Fort Yuma Reservation (Ms. McCormick) responded on June 3, 2021, and indicated the Tribe does not wish to comment on this project, defers to the more local Tribes, and supports their decisions with regard to the project.
- The Agua Caliente Band of Cahuilla Indians (Ms. Lucy Padilla, Tribal Archaeologist) responded on June 10, 2021, indicating the project is not located within the Tribe's Traditional Use Area and the Tribe defers to the other tribes in the area.
- Rincon Band of Luiseño Indians (Ms. Madrigal) responded on June 22, 2021, indicating the project is within the Territory of the Luiseño people, and is also within Rincon's specific area of Historic interest. The Tribe has no knowledge of cultural resources within or near the project area. A cultural resources records search is recommended and access to the results is requested. It was also recommended that Pechanga be contacted.
- Augustine Band of Cahuilla Indians (Victoria Martin, Tribal Secretary) responded on June 28, 2021, indicating the Tribe has no specific information regarding cultural resources that may be affected by the proposed project, but requested immediate notification in the event any cultural resources are discovered.
- Pala Band of Mission Indians (Shasta Gaughen, THPO) responded on June 30, 2021, indicating the project is neither within the boundaries of the reservation nor the Tribe's Traditional Use Area. However, the following was requested: notification of project progress, especially in the event of expansion of the project area, access to reports of investigations, and/or any documentation that might be generated regarding previously reported or newly discovered sites, and that Approved Cultural Monitors be present on site during all survey and all ground-disturbing activities.

No response was received from any of the other individuals contacted. Please see Appendix C for a detailed record of the scoping, representative examples of contact emails, letters, and related correspondence.

RECOMMENDATIONS

Preliminary research, a records search, field survey, and Native American scoping were conducted for this assessment of the project area. Although no cultural resources are documented within the project area and none were identified by the survey, it is bracketed by 15 prehistoric resources within a ½ mile, including a portion of a large habitation site. Therefore, despite the disturbances, the sensitivity for subsurface resources is moderate and archaeological monitoring is recommended.

If human remains are encountered, State Health and Safety Code Section 7050.5 states that no further disturbance shall occur until the County Coroner has made a determination of origin and disposition pursuant to Public Resources Code Section 5097.98. The County Coroner must be notified of the find immediately. If the remains are determined to be Native American, the County Coroner would notify the NAHC, which would determine and notify an MLD. With the permission of the landowner or his/her authorized representative, the MLD may inspect the site of the discovery. The MLD shall complete the inspection and make recommendations or preferences for treatment within 48 hours of being granted access to the site. The MLD recommendations may include scientific removal and nondestructive analysis of human remains and items associated with Native American burials, preservation of Native American human remains and associated items in place, relinquishment of Native American human remains and associated items to the descendants for treatment, or any other culturally appropriate treatment.

CERTIFICATION

I hereby certify that the statements furnished above and in the attached exhibits present the data and information required for this archaeological report, and that the facts, statements, and information presented are true and correct to the best of my knowledge and belief.

DATE: July 7, 2021

SIGNED:



PRINTED NAME:

Riordan Goodwin

COUNTY REGISTRATION NO.: _____

REFERENCES

- Barrows, David Prescott
1900 *The Ethno-botany of the Coahuilla [sic] Indians of Southern California*. Chicago: University of Chicago Press.
- Bean, Lowell John
1978 Cahuilla. In *California*, edited by R.F. Heizer, pp. 575–587. *Handbook of North American Indians*, vol. 8, W.C. Sturtevant, general editor, Smithsonian Institution, Washington, D.C.
- Bean, Lowell John, and Florence C. Shipek
1978 Luiseño. In *California*, edited by R.F. Heizer, pp. 550–563. *Handbook of North American Indians*, vol. 8, W.C. Sturtevant, general editor, Smithsonian Institution, Washington, D.C.
- Beattie, George W., and Helen P. Beattie
1951 *Heritage of the Valley: San Bernardino's First Century*. Biobooks: Oakland.
- Beck, Warren A., and Ynez D. Haase
1974 *Historical Atlas of California*. Oklahoma City: University of Oklahoma Press.
- California Geological Survey
2002 *California Geomorphic Provinces*. California Geologic Survey Note 36. California Department of Conservation.
- Cooley, Theodore, and Joshua Patterson
2008 Archaeological Survey Report for the Southern California Edison MWD-33kV Stripper Circuit, Rule 15 Project, Riverside County, California (WO#6777-2355, AI#4-2174). Prepared by Jones and Stokes. Unpublished report on file, EIC at UCR.
- Goodwin, Riordan, and Robert E. Reynolds
2003 Cultural and Paleontological Resources Assessment State Route 79/Benton Road Traffic Light Installation Project, Riverside County, California.
- Gunther, Jane D.
1984 *Riverside County, California Place Names: Their Origins and Their Stories*. Riverside: Rubidoux Printing Company.
- Heizer, Robert F.
1968 The Indians of Los Angeles County. Hugo Reid's Letters of 1852. *Southwest Museum Papers* 21. Los Angeles, California.
- Heizer, Robert F., and Albert B. Elsasser
1980 *The Natural World of the California Indians*. University of California Press, Berkeley and Los Angeles.

Historic Aerials (HistoricAerials.com)

2021 Various aerial photographs of project area.

Hooper, Lucile

1920 *The Cahuilla Indians*. University of California Publication in American Archaeology and Ethnology. Vol. 16 No. 6. Reprinted by Malki Museum Press. Banning, California.

Hunnenman, John

2008 French Valley: A storied past and still history in the making. In *San Diego Union-Tribune* April 20, 2008.

Ingersoll, L.A.

1904 *Ingersoll's Century Annals of San Bernardino County 1769–1904*. Los Angeles: by the author.

James, Harry C.

1960 *The Cahuilla Indians*. Los Angeles: Westernlore Press. Reprinted in 1969 and 1985 by Malki Museum Press. Banning, California.

Kroeber, Alfred L.

1925 *Handbook of the Indians of California*. Bureau of American Ethnology Bulletin No. 78. Washington D.C.: Smithsonian Institution. Reprinted in 1976, New York: Dover Publications.

Lech, Steve

2016 History of Riverside County. <http://www.riversidecountyhistory.org/>.

McBurney, William J., and Mary Rice Milholland

2009 *Images of America: Greater French Valley*. San Francisco: Arcadia Publishing.

Moratto, Michael J.

2004 *California Archaeology*. Orlando, Florida: Academic Press. Originally published 1984.

Norris, R.M., and R.W. Webb

1976 *Geology of California*, John Wiley and Sons, Inc., Santa Barbara.

Oxendine, Joan

1983 *The Luiseño Village During the Late Prehistoric Era*. Unpublished Ph.D. dissertation, Department of Anthropology, University of California, Riverside.

Salley, H.E.

1977 History of California Post Offices 1849–1976.

Schoenherr, Allan A.

1992 *A Natural History of California*. University of California Press, Berkeley and Los Angeles.

Sharp, Robert P.

1976 *Southern California (K/H Geology Field Guide Series)*. Kendall/Hunt Publishing, Dubuque.

Sparkman, Philip S.

1908 The Culture of the Luiseño Indians. *University of California Publications in American Archaeology and Ethnology* 8(4). Berkeley.

Strong, William D.

1929 Aboriginal Society in Southern California. *University of California Publications in American Archaeology and Ethnology* 26(1): 1–358. Berkeley.

USGS (United States Geological Survey)

1978 *Bachelor Mountain, California*. 7.5-minute topographic quadrangle map. United States Geological Survey, Denver, Colorado.

Wallace, William J.

1955 A Suggested Chronology for Southern California Coastal Archaeology. *Southwestern Journal of Anthropology* 11(3):214–230.

1978 Post-Pleistocene Archaeology. In *California*, edited by R. Heizer, pp. 550–563. *Handbook of North American Indians*, Vol. 8. W.C. Sturtevant, general editor. Smithsonian Institution, Washington, D.C.

Warren, Claude N.

1968 Cultural Tradition and Ecological Adaptation on the Southern California Coast. *Eastern New Mexico University Contributions in Anthropology* 1(3). Portales.

1984 The Desert Region. In *California Archaeology*, by M. Moratto with contributions by D.A. Fredrickson, C. Raven, and C.N. Warren, pp. 339–430. Academic Press, Orlando, Florida.

Warren, Claude N., and Robert H. Crabtree

1986 Prehistory of the Southwestern Area. In W.L. D’Azevedo ed., *Handbook of the North American Indians*, Vol. 11, *Great Basin*, pp. 183–193. Washington D.C.: Smithsonian Institution.

Wilson, Stacy, Jill Gibson, and Theodore Cooley

2015 Cultural Resources Survey Report for the Proposed Southern California Edison Valley South 115 KV Subtransmission Project, Riverside County, California. Prepared by AECOM Unpublished report on file, EIC at UCR.

APPENDIX A

PERSONNEL QUALIFICATIONS

RIORDAN GOODWIN, RA

ARCHAEOLOGIST / LABORATORY MANAGER /
SENIOR CULTURAL RESOURCES MANAGER



EXPERTISE

- Historical and Military Archaeology
- Historical Research
- Phase I Surveys
- Phase II Test Excavation Programs
- Cultural Resources Monitoring
- Native American Consultation

EDUCATION

Anthropology Graduate Program, San Diego State University, California, 1993

B.A. in Anthropology, San Diego State University, California, 1987

PROFESSIONAL EXPERIENCE

Senior Cultural Resources Manager, Archaeologist, Laboratory Manager, Field Supervisor Project Manager, Paleontological Technician, LSA, Riverside, California, 2001–Present

PROFESSIONAL CERTIFICATIONS/ REGISTRATIONS

Registered Archaeologist (RA)

SPECIALIZED TRAINING

County of Riverside Cultural Sensitivity Training

PROFESSIONAL RESPONSIBILITIES

Mr. Goodwin has extensive experience as Principal Investigator, Co-principal Investigator, and contributing specialist on cultural resource assessments, historic architectural evaluations, constraints analyses, Phase II testing and Phase III data recovery programs. He has written, co-written, contributed to and peer-reviewed California Environmental Quality Act (CEQA) and National Historic Preservation Act (NHPA) Section 106-level California Office of Historic Preservation (OHP) and Caltrans-format cultural resource assessments, archaeological testing and monitoring reports, historic building inventories and evaluations, management plans, Historic American Buildings Survey/Historic American Engineering Record (HABS/HAER) documentation, and Department of Parks and Recreation (DPR) forms. His 30 years of experience includes both California Register of Historical Resources (California Register) and National Register of Historic Places (National Register)-level work in Riverside and San Bernardino Counties involving survey, testing, data recovery, and monitoring programs, as well as Native American consultation.

PROJECT EXPERIENCE

Mr. Goodwin has performed hundreds of Phase I cultural resources assessments, which included resource documentation, and many Phase II archaeological testing programs for projects ranging in size from a fraction of an acre to over a 1,000 acres. Selected projects include:

Riverside County Flood Control and Water Conservation District, Banning MDP Line H Stage 1 Project Banning, Riverside County, California

Mr. Goodwin supervised the Phase IV cultural resources monitoring program, compiled the administrative record, provided logistical support, and prepared the monitoring report.

OSI Partnership I, LLC Banning Business Park Project Banning Riverside County, California

Mr. Goodwin conducted the Phase II testing program, documented and evaluated historic period resources, managed the laboratory, contributed to the report, and arranged for disposition of the artifact collection.

Caltrans, Potrero Road/State Route 60 Project Beaumont, Riverside County, California

Mr. Goodwin conducted the Phase I survey, Native American consultation on behalf of Caltrans, and prepared the Historic Property Survey Report (HPSR) and Archaeological Resources Report (ASR) in accordance with Caltrans Standard Environmental Reference (SER) guidelines, Section 106, and CEQA for District 8. The HPSR and ASR were approved by Caltrans.

Caltrans, State Route 210 Project San Bernardino, San Bernardino County, California

Mr. Goodwin conducted the archaeological monitoring program, recovered prehistoric human remains, coordinated with the County Coroner and Native American Tribes, and prepared a monitoring report in accordance with

RIORDAN GOODWIN, RA

ARCHAEOLOGIST / LABORATORY MANAGER /
SENIOR CULTURAL RESOURCES MANAGER



Caltrans SER guidelines, Section 106, and CEQA for District 8. The report was approved by Caltrans.

Confidential Ongoing Investigation Morgan Hill, Santa Clara County, California

Mr. Goodwin participated in Phase III salvage/data recovery of multiple inhumations at a prehistoric Ohlone mortuary complex including documentation of subsurface features, recovery of artifacts, laboratory analysis, monitoring, and logistical support. He contributed the historic context to the report.

Southern California Edison, On-Call Biological, Cultural, and Water Quality Support Inyo, Kern, Los Angeles, Mono, Orange, Riverside, San Bernardino, San Diego, Santa Barbara, Tulare, and Ventura Counties, California

Mr. Goodwin conducted multiple surveys, documented historic-period resources and prepared letter reports and memos.

Southern California Edison, West Of Devers Project Riverside County, California

Mr. Goodwin conducted the Phase I survey and research, documented historic period resources, and contributed to the report.

Southern California Edison, El Casco Substation Project San Timoteo Canyon, Riverside County, California

Mr. Goodwin conducted the cultural resources monitoring program, documented historic period resources, managed the laboratory and provided logistical support to the paleontological monitoring/fossil specimen recovery program.

Southern California Edison, Superstition Solar Project El Centro, California

Mr. Goodwin participated in the Phase I survey, documented cultural resources, and contributed to the report.

Caltrans and City of Colton, Colton Crossing Grade Separation Colton, San Bernardino County, California

Mr. Goodwin conducted the Phase I survey and Extended Phase I (XPI) archaeological testing of a segment of BNSF Railroad, designed and supervised the ground-penetrating radar (GPR) program, documented and evaluated historic-period resources, coordinated research, supervised laboratory analysis, conducted Native American consultation on behalf of Caltrans, prepared Caltrans-format Historic Property Survey Report (HPSR), Archaeological Resources Report (ASR), and XPI Report, and contributed to the Historic Resources Evaluation Report (HRER) in accordance with Caltrans Standard Environmental Reference (SER) guidelines, Section 106, and CEQA. He also arranged for disposition of the artifact collection.

Caltrans, I-15/I-215 Interchange Devore, San Bernardino County, California

Mr. Goodwin conducted the Phase I survey, assisted with XPI survey/mapping, documented and evaluated historic-period resources, conducted research with the San Bernardino County Archaeologist, conducted additional research on equestrian trails, coordinated and collated multiple records searches, supervised and participated in an archaeological monitoring program, conducted Native American consultation on behalf of Caltrans, prepared Caltrans-format Historic Property Survey Report (HPSR), Archaeological Resources Report (ASR), and monitoring report, and contributed to the Historic Resources Evaluation Report (HRER) in accordance with Caltrans Standard Environmental Reference (SER) guidelines, Section 106, and CEQA. The project received State Historic Preservation Office (SHPO) concurrence on the HPSR/HRER/ASR.

RIORDAN GOODWIN, RA

ARCHAEOLOGIST / LABORATORY MANAGER /
SENIOR CULTURAL RESOURCES MANAGER



Caltrans, Mission Boulevard Bridge Replacement Riverside, Riverside County, California

Mr. Goodwin supervised the Phase I survey, assisted with mapping, conducted research, coordinated and collated records searches, supervised archaeological survey, conducted Native American consultation on behalf of Caltrans, prepared a Historic Property Survey Report (HPSR), Archaeological Resources Report (ASR), and monitoring report, and assisted with the Historic Resources Evaluation Report (HRER) in accordance with Caltrans Standard Environmental Reference (SER) guidelines, Section 106, and CEQA. The project received State Historic Preservation Office (SHPO) concurrence on the HPSR/HRER/ASR.

Caltrans, State Street Extension Project San Bernardino, San Bernardino County, California

Mr. Goodwin conducted the Phase I survey, research, and Native American consultation on behalf of Caltrans, and prepared a Historic Property Survey Report (HPSR) and Archaeological Resources Report (ASR) in accordance with Caltrans Standard Environmental Reference (SER) guidelines, Section 106, and CEQA. The project received State Historic Preservation Office (SHPO) concurrence on the HPSR/ASR.

Caltrans, Gene Autry Trail Palm Springs, Riverside County, California

Mr. Goodwin conducted the Phase I survey, research, and Native American consultation on behalf of Caltrans, and prepared a Historic Property Survey Report (HPSR) and Archaeological Resources Report (ASR) in accordance with Caltrans Standard Environmental Reference (SER) guidelines, Section 106, and CEQA. The project received State Historic Preservation Office (SHPO) concurrence on the HPSR/ASR.

Caltrans, State Route 210 San Bernardino, San Bernardino County, California

Mr. Goodwin conducted the archaeological monitoring program, recovered prehistoric human remains, coordinated with Native American Tribes and the County Coroner, and prepared a monitoring report in accordance with Caltrans Standard Environmental Reference (SER) guidelines, Section 106, and CEQA.

SunPeak Solar, LLC, Chuckwalla Valley Solar Desert Center, Riverside County, California

Mr. Goodwin led the Phase I survey of over 700 acres of former World War II-era U.S. Army training area, documented prehistoric and historic-period resources, prepared draft district records, conducted follow-up survey, co-authored the report, and coordinated with Bureau of Land Management.

City of Palm Springs, Palm Springs International Airport Palm Springs, Riverside County, California

Mr. Goodwin conducted the Phase I field survey of World War II-era U.S. Army airfield features, documented historic period airfield features, updated resource documentation, assisted with architectural survey, prepared the report, and responded to comments from the Federal Aviation Administration (FAA).

City of Murrieta, Murrieta Hot Springs Murrieta, Riverside County, California

Mr. Goodwin conducted the records search, Phase I survey, site record update, Phase II archaeological testing, and laboratory analysis, and prepared the report.

City of Perris, Stratford Ranch Residential Perris, Riverside County, California

Mr. Goodwin conducted the Phase I field survey, site record update, Phase II testing, and laboratory analysis, and prepared the report. He arranged for curation of artifact collection.

RIORDAN GOODWIN, RA

ARCHAEOLOGIST / LABORATORY MANAGER /
SENIOR CULTURAL RESOURCES MANAGER



City of Lake Elsinore, The Village Estates Lake Elsinore, Riverside County, California

Mr. Goodwin conducted the Phase I field survey, site recordation, Phase II testing, and laboratory analysis of historic period artifacts. He also assisted with architectural evaluation and co-authored report.

County of Riverside, Gateway Center Specific Plan Riverside County, California

Mr. Goodwin led the Phase I field survey, updated prehistoric resource documentation, conducted Phase II testing, evaluated resources, conducted Native American consultation on behalf of the County, and prepared the report.

Perris Union High School District (PUHSD), Perris Union High School No. 4 Riverside County, California

Mr. Goodwin conducted the Phase I field survey, site record update, Phase II testing, laboratory analysis of prehistoric artifacts, and Native American consultation on behalf of PUHSD, and prepared the report. He also supervised the Phase IV monitoring program, prepared the monitoring report, and arranged for curation of the artifact collection.

City of Corona, Corona 720 Project Corona, Riverside County, California

Mr. Goodwin conducted the Phase I field survey, documented resources, updated resource documentation, prepared the report, and conducted follow up for a revised report.

County of Riverside, Santa Ana River Trail Project Riverside County, California

Mr. Goodwin conducted the Phase I survey, research, and Native American consultation on behalf of the County of Riverside. He documented and evaluated historic period resources and prepared the report.

Brent Engineering, Riverside Project Riverside County, California

Mr. Goodwin coordinated the Phase I field survey, documented resources, conducted research and documentation, and prepared the report and follow-up revised report.

Caltrans, Community Environmental Transportation Acceptability Process Project Riverside County, California

Mr. Goodwin conducted an expansive historic architectural survey, compiled a built environment inventory, participated in Phase II testing, and edited the Historic Property Survey Report (HPSR).

County of Riverside, South Coast Winery Resort and Spa Riverside County, California

Mr. Goodwin supervised monitoring, acted as lead monitor, and prepared the report. No cultural resources were identified.

City of San Jacinto, Ramona Expressway Widening Project San Jacinto, Riverside County, California

Mr. Goodwin conducted the Phase I survey and research, documented historic period resources, and prepared the report.

RIORDAN GOODWIN, RA

ARCHAEOLOGIST / LABORATORY MANAGER /
SENIOR CULTURAL RESOURCES MANAGER



Caltrans, State Route 710 Extension Los Angeles County, California

Mr. Goodwin participated in the historic architectural survey of several alternative routes for the transportation corridor from East Los Angeles to Pasadena. He assisted with preparation of the Historic Resources Evaluation Report (HRER).

U.S. Army Corps of Engineers, Monteolivo Project Corona, Riverside County, California

Mr. Goodwin conducted the Phase I survey, research, and Native American consultation on behalf of the U.S. Army Corps of Engineers (USACE). He documented historic period resources and prepared the report.

City of San Diego, Otai II Pipeline Project San Diego, San Diego County, California

Mr. Goodwin conducted the archaeological monitoring program, recovered, documented, and evaluated historic period refuse, coordinated with City Inspector, and prepared monitoring the report.

County of Riverside, Briggs Road Improvements at Warm Springs Riverside County, California

Mr. Goodwin supervised and led the archaeological monitoring program, coordinated with Native American Tribes and the County Inspector, and prepared the monitoring report.

City of Hemet, Exchange Club Park Hemet, Riverside County, California

Mr. Goodwin supervised and led the archaeological monitoring program, coordinated with Native American Tribes and the County Inspector, and prepared the monitoring report.

Caltrans and County of Riverside, Cajalco Road and Alexander Road Project Riverside County, California

Mr. Goodwin supervised and led the archaeological monitoring program, conducted research, coordinated with Native American Tribes, Caltrans, and the County Inspector, and prepared the monitoring report.

City of Perris, Mercado Park Project Perris, Riverside County, California

Mr. Goodwin conducted the archaeological monitoring program, coordinated with the City Inspector, and prepared the monitoring report.

City of Perris, Perris Circle Project Perris, Riverside County, California

Mr. Goodwin supervised and led the archaeological monitoring program, coordinated with the City Inspector, and prepared the monitoring report.

City of Fontana, Sierra Crest II Project Fontana, San Bernardino County, California

Mr. Goodwin supervised and led the archaeological monitoring program, updated resource documentation, evaluated resources, and prepared the monitoring report.

City of San Diego, BAE Systems Pier 4 San Diego, San Diego County, California

Mr. Goodwin conducted research, assisted with the architectural survey, and contributed to the report.

RIORDAN GOODWIN, RA

ARCHAEOLOGIST / LABORATORY MANAGER /
SENIOR CULTURAL RESOURCES MANAGER



Riverside County Transportation Commission, Mid County Parkway Riverside County, California

Mr. Goodwin participated in the Phase I survey and Phase II testing of prehistoric sites, and assisted with report for the Riverside County Transportation Commission.

City of Murrieta, CVS Pharmacy Project Murrieta, Riverside County, California

Mr. Goodwin conducted the records search and Phase I field survey, documented and evaluated resources, and prepared the report.

City of Palm Springs, Boulders Development Project Palm Springs, Riverside County, California

Mr. Goodwin conducted the records search and Phase I field survey, updated resource documentation, and prepared the report.

City of Murrieta, CarMax Murrieta Project Murrieta, Riverside County, California

Mr. Goodwin conducted the records search and Phase I field survey, updated resource documentation, and prepared the report.

City of Perris, Clearwater Elementary School Project Perris, Riverside County, California

Mr. Goodwin conducted the records search and Phase I field survey, and prepared the report.

City of Riverside, Cottonwood Warehouse Project Riverside, Riverside County, California

Mr. Goodwin conducted the records search and Phase I field survey, and prepared the report.

Pulte Homes, Tract 18917 Riverside County, California

Mr. Goodwin conducted the records search and Phase I field survey, and prepared the report.

City of Rialto, Willow Avenue Warehouse Project Rialto, San Bernardino County, California

Mr. Goodwin conducted the records search and Phase I field survey, and prepared the report.

City of Victorville, Space Center Project Victorville, San Bernardino County, California

Mr. Goodwin conducted the records search, coordinated the Phase I field survey, and prepared the report.

County of Riverside, Alessandro Commerce Center Riverside County, California

Mr. Goodwin assisted with the Phase I survey, conducted the Phase II testing program, supervised the monitoring program, coordinated with Native American Tribes, updated resource recordation, and prepared the report.

County of Riverside, SunCal, McSweeny Farms Residential Development Riverside County, California

Mr. Goodwin participated in Phase II testing of prehistoric sites and disposition of the artifact collection.

RIORDAN GOODWIN, RA

ARCHAEOLOGIST / LABORATORY MANAGER /
SENIOR CULTURAL RESOURCES MANAGER



City of Morgan Hill, Borello Ranch Project Morgan Hill, Santa Clara County, California

Mr. Goodwin participated in Phase III salvage/data recovery of multiple inhumations at a prehistoric Ohlone mortuary complex including documentation of subsurface features, recovery of artifacts, laboratory analysis, monitoring, and logistical support. He contributed the historic context to the report.

SELECTED REPORTS

Archaeological Monitoring Program, Briggs Road Improvements at Warm Springs Creek, Riverside County Transportation Department, Riverside County, California 2016.

Archaeological Monitoring Program, Perris Circle Industrial Park Project, Riverside County, California 2015.

Cultural Resources Assessment and Archaeological Testing, Gateway Center Specific Plan, Riverside County, California 2015.

Cultural Resources Assessment, Brent Engineering Riverside Project, Riverside County, California 2017.

Cultural Resources Assessment, CVS Pharmacy, City of Murrieta, Riverside County, California 2016.

Cultural Resources Assessment, Rancho Diamonte Project, City of Hemet, Riverside County, California 2016.

Historic Property Survey Report, Colton Crossing Grade Separation Project, City of Colton, San Bernardino County, California 2011.

Phase II Archaeological Testing, Perris Union High School No. 4, Riverside County, California, 2016.

PRESENTATIONS

“Evidence for Luiseño and Diegueño Cultural Continuity in the Late California; Mission Period: Ceremonial Art.” Presented at the 1992 California Mission Studies Association annual conference.

“Allensworth: Prelude to the Dream.” Presented at the Society for Historical Archaeology Annual Meeting in 2007.

“The Archaeology of Patton’s Desert Training Center in the Chuckwalla Valley at Desert Center, California.” Poster presented at the Society for California Archaeology 2010 Annual Meeting.

“The Perris Crescent.” Presented at the Society for California Archaeology 2016 Annual Meeting.

APPENDIX B

RECORDS SEARCH BIBLIOGRAPHY

Report List

| Report No. | Other IDs | Year | Author(s) | Title | Affiliation | Resources |
|------------|---|------|------------------------------------|---|--|----------------------|
| RI-00186 | NADB-R - 1080236; Submitter - 0167; Voided - MF-0173 | 1975 | Helen Wells | Archaeological Impact Report: Eastern Municipal Water District, Riverside County, California: PL 984 Water Systems Addition | Archaeological Research Unit, U.C. Riverside | 33-000418 |
| RI-00235 | NADB-R - 1080292; Other - UCRARU #279; Voided - MF-0222 | 1977 | Ken Daly | Environmental Impact Evaluation:Archaeological Assessment of the NW 1/4 of Section 6, T7S, R2W, SBBM, Near Adobe Spring, Riverside County, California | Archaeological Reseach Unit, U.C. Riverside | 33-000716 |
| RI-00450 | NADB-R - 1080493; Voided - MF-0393 | 1974 | T. Suss and M. Cole | Archaeological Impact Report - Parcel Map 6026 | San Bernardino County Museum Association | |
| RI-01260 | NADB-R - 1081425; Voided - MF-1257 | 1981 | Roger J. Desautels. | An Archaeological Assessment of TPM 17650 | Scientific Resource Surveys, Santa Ana, CA | 33-002225 |
| RI-01387 | NADB-R - 1081628; Voided - MF-1450 | 1982 | BOUSCAREN, STEPHEN | AN ARCHAEOLOGICAL ASSESSMENT OF THE OLD DUTCH VILLAGE PROPERTY, WEST OF LAKE SKINNER IN RIVERSIDE COUNTY, CALIFORNIA | ARCHAEOLOGICAL RESEARCH UNIT, U.C. RIVERSIDE | 33-002257 |
| RI-01848 | NADB-R - 1082227; Voided - MF-2013 | 1984 | SCIENTIFIC RESOURCES SURVEYS, INC. | AN ARCHAEOLOGICAL SURVEY OF A PORTION OF THE SAN DIEGO AQUEDUCT EASEMENT WEST OF SKINNER RESERVOIR, RIVERSIDE COUNTY, CALIFORNIA | Scientifica Resource Surveys, Inc. | 33-002970 |
| RI-01865 | NADB-R - 1082240; Submitter - 0797; Voided - MF-2024 | 1984 | WILMOTH, STAN | AN ARCHAEOLOGICAL ASSESSMENT OF SEVERAL ALTERNATIVE SITES FOR THE NEW RANCHO CALIFORNIA AIRPORT, RIVERSIDE COUNTY, CALIFORNIA | ARCHAEOLOGICAL RESEARCH UNIT, U.C. RIVERSIDE | 33-000856, 33-002933 |
| RI-02259 | NADB-R - 1082698; Voided - MF-2455 | 1987 | DROVER, C.E. | A CULTURAL RESOURCE ASSESSMENT SABA II INDUSTRIAL DEVELOPMENT | Consulting Archaeologist, Tustin, CA | 33-003409 |
| RI-02305 | NADB-R - 1082762; Voided - MF-2506 | 1988 | KELLER, JEAN SALPAS | AN ARCHAEOLOGICAL ASSESSMENT OF TPM # 23199, RIVERSIDE COUNTY, CALIFORNIA | AUTHOR(S) | 33-011809 |
| RI-02556 | NADB-R - 1083663; Voided - MF-2779 | 1990 | BROCK, JAMES | REPORT ON ARCHAEOLOGICAL MONITORING OF THE 50-ACRE SOUTHWEST COUNTY JUSTICE CENTER PROPERTY, RIVERSIDE COUNTY, CALIFORNIA | ARCHAEOLOGICAL ADVISORY GROUP | |
| RI-02557 | NADB-R - 1085362; Submitter - 990202; Voided - MF-2779 | 1999 | BROCK, JAMES | REPORT ON ARCHAEOLOGICAL MONITORING FOR THE JAIL EXPANSION PROJECT, SOUTHWEST COUNTY JUSTICE CENTER NEAR MURRIETA, CALIFORNIA | ARCHAEOLOGICAL ADVISORY GROUP | |

Report List

| Report No. | Other IDs | Year | Author(s) | Title | Affiliation | Resources |
|------------|--|------|--|--|-------------------------------------|--|
| RI-02558 | NADB-R - 1085590; Submitter - 000408; Voided - MF-2779 | 2000 | BROCK, JAMES | REPORT ON ARCHAEOLOGICAL MONITORING FOR THE COURTHOUSE AND JUVENILE DETENTION CENTER PROJECTS, SOUTHWEST COUNTY JUSTICE CENTER, NEAR MURRIETA, CALIFORNIA. | ARCHAEOLOGICAL ADVISORY GROUP | |
| RI-02579 | NADB-R - 1083062; Voided - MF-2799 | 1989 | BROCK, JAMES | AN ARCHAEOLOGICAL ASSESSMENT OF THE 50 ACRE SOUTHWEST COUNTY JUSTICE CENTER PROPERTY, RIVERSIDE COUNTY, CALIFORNIA. | ARCHAEOLOGICAL ADVISORY GROUP | |
| RI-02936 | NADB-R - 1085777; Submitter - 700; Voided - MF-3147 | 2001 | LOVE, BRUCE, BAI "TOM" TANG, DANIEL BALLESTER, and MARIAM DAHDUL | HISTORICAL/ARCHAEOLOGICAL RESOURCES SURVEY REPORT: APN 958-230-022, SOUTHEAST CORNER OF BENTON ROAD AND WINCHESTER ROAD, RIVERSIDE COUNTY, CA | CRM TECH | 33-011121 |
| RI-03370 | NADB-R - 1084002; Voided - MF-3609 | 1990 | DROVER, CHRISTOPHER E. | A CULTURAL RESOURCE ASSESSMENT: AIRPORT BUSINESS PARK, FRENCH VALLEY, RIVERSIDE COUNTY, CALIFORNIA | AUTHOR | 33-000716, 33-002932, 33-004638, 33-004639, 33-004640, 33-004641, 33-004642, 33-004660, 33-004661, 33-004662 |
| RI-03371 | NADB-R - 1084607; Voided - MF-3609 | 1993 | DROVER, CHRISTOPHER | A CULTURAL RESOURCE ADDENDUM: AIRPORT BUSINESS PARK, FRENCH VALLEY, RIVERSIDE COUNTY, CALIFORNIA | AUTHOR | 33-005326, 33-005327 |
| RI-03739 | NADB-R - 1084558; Voided - MF-4068 | 1993 | Daniel G. Landis | A Cultural Resources Survey for the Gas Pipeline No. 6900 Project, Riverside County, California | Greenwood & Associates | 33-001175, 33-003437, 33-004461, 33-005130 |
| RI-04404 | NADB-R - 1085736; Voided - MF-4913 | 2000 | JONES AND STOKES ASSOCIATES, INC. | FINAL CULTURAL RESOURCES INVENTORY REPORT FOR THE WILLIAMS COMMUNICATIONS, INC., FIBER OPTIC CABLE SYSTEM INSTALLATION PROJECT, RIVERSIDE TO SAN DIEGO, CALIFORNIA VOL I-IV. | JONES AND STOKES ASSOCIATES, INC. | 33-000816, 33-000817, 33-000862, 33-001845, 33-002970, 33-003081, 33-003839, 33-004202, 33-004624, 33-004744, 33-004768, 33-007587, 33-007601, 33-008105, 33-008172, 33-009772, 33-009773, 33-009774, 33-009775, 33-009776 |
| RI-04791 | NADB-R - 1086153 | 2004 | GUST, SHERRI and VANESSA MIRRO | ARCHAEOLOGICAL ASSESSMENT REPORT AND MITIGATION PLAN, PLANNING AREA 6 OF QUINTA DO LAGO, WINCHESTER, RIVERSIDE COUNTY, CALIFORNIA | COGSTONE RESOURCES MANAGEMENT, INC. | |

Report List

| Report No. | Other IDs | Year | Author(s) | Title | Affiliation | Resources |
|------------|--|------|--|---|-----------------------------------|----------------------|
| RI-04873 | NADB-R - 1086235; Submitter - FHG-01-139 | 2001 | DICE, MICHAEL, E. BRUCE LANDER, and LESLIE NAY IRISH | A PHASE I ARCHAEOLOGICAL RESOURCE SURVEY AND A PALEONTOLOGICAL RECORDS REVIEW OF TRACT #30098, A 43.55-ACRE RESIDENTIAL PROJECT LOCATED NEAR BENTON ROAD AND GAALE LANE, FRENCH VALLEY, COUNTY OF RIVERSIDE, CALIFORNIA | L&L ENVIRONMENTAL, INC. | |
| RI-04874 | NADB-R - 1086236; Submitter - FHG-01-138/FHG-01-151 | 2001 | DICE, MICHAEL, E. BRUCE LANDER, and LESLIE NAY IRISH | A PHASE I ARCHAEOLOGICAL RESOURCE SURVEY AND A PALEONTOLOGICAL RECORDS REVIEW OF TRACT #30097, A 37.68-ACRE RESIDENTIAL PROJECT LOCATED NEAR AULD ROAD AND GAALE LANE, FRENCH VALLEY, COUNTY OF RIVERSIDE, CALIFORNIA | L&L ENVIRONMENTAL, INC. | 33-011037, 33-011038 |
| RI-04933 | NADB-R - 1086295; Submitter - 02-03-03-720 | 2003 | MCKENNA, JEANETTE A. | A PHASE I RESOURCES SURVEY OF ASSESSOR PARCEL 958-060-005, A 20 ACRE PARCEL LOCATED IN RIVERSIDE COUNTY, CALIFORNIA | MCKENNA ET AL. | 33-002970, 33-003839 |
| RI-04934 | NADB-R - 1086296; Submitter - 04-04-10-747 | 2003 | MCKENNA, JEANETTE A. and DAVID | A PHASE II ARCHAEOLOGICAL TESTING PROGRAM AT CA-RIV-3839, A PREHISTORIC MILLING STATION IN THE FRENCH VALLEY REGION OF RIVERSIDE COUNTY, CALIFORNIA. | MCKENNA ET AL. | 33-003839 |
| RI-06086 | NADB-R - 1087449 | 2005 | SCHMIDT, JAMES J. | LETTER REPORT: W.O. 4950-0361: VALLEY-PAUBA 115KV TRANSMISSION LINE IN THE MURRIETA AREA, RIVERSIDE COUNTY, CA | COMPASS ROSE ARCHAEOLOGICAL, INC. | |
| RI-06369 | NADB-R - 1087732; Submitter - CONTRACT #1532 | 2005 | TANG, BAI, MICHAEL HOGAN, DEIRDRE ENCARNACION, and DANIEL BALLESTER | HISTORICAL/ARCHAEOLOGICAL REOSURCES SURVEY REPORT: MURRIETA TENNIS CLUB PROJECT, NEAR THE CITY OF MURRIETA, RIVERSIDE COUNTY, CALIFORNIA | CRM TECH | |
| RI-06524 | NADB-R - 1087891; Submitter - CONTRACT #1711 | 2005 | HOGAN, MICHAEL, BAI TANG, and DANIEL BALLESTER | HISTORICAL/ARCHAEOLOGICAL RESOURCES SURVEY REPORT, DUTCH VILLAGE SPECIFIC PLAN, FRENCH VALLEY AREA, RIVERSIDE COUNTY, CA | CRM TECH | 33-011038 |

Report List

| Report No. | Other IDs | Year | Author(s) | Title | Affiliation | Resources |
|------------|--|------|---|---|--------------------------------|---|
| RI-06788 | | 2006 | Hoover, Anna M., Underbrink, Susan, and Blevins, Kristie R. | An Archaeological and Paleontological Mitigation-Monitoring Report for French Calley IV and V, Tracts 30098 and 30097, APNs 958-060-006 and -007, 958-070-004 to -011 and -014, Riverside County, California | L&L Environmental, Inc. | 33-006648, 33-006649 |
| RI-06851 | Submitter - SWCA Project No. 9374-111 | 2005 | Brown, Joan C. and Stephen O'Neil | Archaeological Survey for the French Valley Airport Center Project, Riverside County, California | SWCA Environmental Consultants | |
| RI-07032 | | 2006 | Jean A. Keller, Ph.D. | A Phase I Cultural Resources Assessment of Plot Plan 21024 | Cultural Resources Consultant | |
| RI-07210 | | 2007 | Frederick W. Lange, Ph.D., RPA | Cultural Resources Assessment for the French Valley Business Center (Apn 958-240-028) in an Unincorporated Area of Riverside County, California | LSA Associates, Inc. | |
| RI-07435 | | 2007 | McKenna, Jeanette | A Phase I Cultural Resources Investigation of the Sunbelt Property Management Property, Approximately 4 Acres of Agricultural Land, Riverside County, California | McKenna et al. | |
| RI-07692 | Submitter - Contract No. 01121.07 | 2008 | Cooley, Theodore and Joshua Patterson | Archaeological Survey Report for the Southern California Edison MWD-33kV Stripper Circuit, Rule 15 Project, Riverside County, California (WO#6777-2355, AI#4-2174) | Jones and Stokes | 33-007795, 33-013871, 33-016989, 33-016990, 33-016991 |
| RI-07705 | Submitter - Contract No. 2162 | 2008 | Smallwood, Josh, Daniel Ballester, and John J. Eddy | PHASE II CULTURAL RESOURCES TESTING AND EVALUATION; SITE 33-011121 (CA-RIV-6687), TENTATIVE PARCEL MAP NO. 30474, FRENCH VALLEY AREA, RIVERSIDE COUNTY, CALIFORNIA. | CRM TECH | 33-011121 |
| RI-07748 | | 2006 | Keller, Jean A. | A PHASE II HISTORICAL RESOURCES INVESTIGATION OF CA-RIV-5326H LOCATED WITHIN THE BOUNDARIES OF THE COMMONS AT FRENCH VALLEY; CITY OF MURIETTA, RIVERSIDE COUNTY, CALIFORNIA. USGS BACHELOR MOUNTAIN, CALIFORNIA QUADRANGLE, 7.5' SERIES | | 33-005326 |
| RI-07867 | Submitter - CRM TECH Contract No. 2244 | 2008 | Tang, Bai "Tom", Clarence Bodmer, Thomas Melzer, and Laura Shaker | Phase I Archaeological Assessment: Assessor's Parcel Nos. 963-060-019, -020, and -021, near the City of Murieta, Riverside County, California | CRM TECH | 33-002257 |

Report List

| Report No. | Other IDs | Year | Author(s) | Title | Affiliation | Resources |
|------------|---|------|--|---|-------------------------------------|---|
| RI-07954 | Submitter - SWCA Project No. 14049, SWCA Cultural Resources Report No. 08-552 | 2008 | Joan C. Brown and John Dietler | Phase IV Archaeological Monitoring for the French Valley Airport Center Project, Parcel Number 33691; Case Number PP21163, Riverside County, California | SWCA Environmental Consultants | 33-017362, 33-017363 |
| RI-08751 | | 2010 | Joan George and Vanessa Mirro | Cultural Resources Assessment for the Eastern Municipal Water District's Benton Road Recycled Water Tank Project, Riverside County, | Applied Earthworks, Inc. | 33-000180, 33-000716, 33-000856, 33-001066, 33-001247, 33-001248, 33-001249, 33-001269, 33-002093, 33-002094, 33-002095, 33-002225, 33-002933, 33-002970, 33-003161, 33-003162, 33-003393, 33-003839, 33-003840, 33-003841, 33-005133, 33-005326, 33-005327, 33-007795, 33-007796, 33-009755, 33-009756, 33-009757, 33-011037, 33-011038, 33-011121, 33-011275, 33-011809, 33-012304, 33-012305, 33-012550, 33-012551, 33-013268, 33-013282, 33-013871, 33-015153, 33-016709, 33-016989, 33-016990, 33-016991, 33-017362, 33-018674 |
| RI-08955 | Submitter - Project No. 60247921.300 | 2015 | Stacie Wilson, Jill Gibson, and Theodore G. Cooley | Cultural Resources Survey Report For The Proposed Southern California Edison Valley South 115 KV Subtransmission Project, Riverside County, California | AECOM | 33-001074, 33-001175, 33-004008, 33-004012, 33-011250, 33-011254, 33-011449, 33-012439, 33-012443, 33-012444, 33-013299, 33-013871, 33-014370, 33-014389, 33-015313, 33-015314, 33-015743, 33-016709, 33-016975, 33-021021, 33-021022, 33-021023, 33-021024, 33-021025, 33-021026, 33-021027, 33-021028, 33-021029, 33-021030, 33-021031, 33-021032 |
| RI-09024 | | 2013 | John J. Eddy, | Phase I Cultural Resources Assessment for the Clinton Keith Road Extension Project, Riverside County, California | Applied EarthWorks, Inc. | 33-013871, 33-016989, 33-016990, 33-021031, 33-023477, 33-023478, 33-023479, 33-023480, 33-023481, 33-023482, 33-023483 |
| RI-09387 | | 2011 | Dennis McDougall and Joa George | Cultural Resources Construction Monitoring: Benton Road Recycled Water Tank Project, Eastern Municipal Water District | Applied EarthWorks | |
| RI-09392 | | 2014 | Mary E. Garrett and Brian F. Smith | A Class III Archaeological Study for the Tierra Del Rey (TTM 36536) for section 106 Compliance, Riverside County, California | Brian F. Smith and Associates, Inc. | |

Report List

| Report No. | Other IDs | Year | Author(s) | Title | Affiliation | Resources |
|------------|--|------|--|---|--------------------------|--|
| RI-09740 | | 2016 | Heather Thomson | Cultural Resources Monitoring Report for the Southwest Justice Center Juvenile Courts Relocation Project EA 2016011 APN 284-320-80-00 | Riverside County | |
| RI-09857 | | 2007 | Sherri Gust | Cultural Resources Monitoring Report: Tierra Del Rey | Cogstone RMI | |
| RI-09857 | | | | | | |
| RI-10195 | | 2018 | Michael Hogan and Savador Z. Boites | Cultural Resources Monitoring Project French Valley Self- Storage Project | CRM Tech | 33-028066 |
| RI-10323 | | 2018 | Michael Hogan | Memorandum on Archaeological Resources and Sensitivity Streamlined Oversight Process Projects EA 0K400 and EA 0L190 In and near the City of Murrieta, Riverside County, California CRM TECH Contract No. 3314 | CRM TECH | |
| RI-10351 | | 2016 | JOHN J. EDDY | ATTACHMENT B HISTORIC PROPERTIES TREATMENT PLAN FOR THE CLINTON KEITH ROAD EXTENSION PROJECT NEAR MURRIETA, RIVERSIDE COUNTY, CALIFORNIA | APPLIED EARTHWORKS, INC. | 33-011739, 33-016989, 33-023478, 33-023479, 33-023480, 33-023481, 33-023482 |
| RI-10433 | | 2014 | John J. Eddy and Josh Smallwood | Phase I Cultural Resources Assessment for the Clinton Keith Road Extension Project, Riverside County, California | Applied EarthWorks, Inc. | 33-016689, 33-016690, 33-021031, 33-023477, 33-023478, 33-023479, 33-023480, 33-023481, 33-023482, 33-023483 |
| RI-10443 | | 2015 | John J. Eddy | Finding of Adverse Effect for the Clinton Keith Road Extension Project Riverside County, California | Applied EarthWorks, Inc. | 33-016689, 33-023478, 33-023479, 33-023480, 33-023481, 33-023482, 33-023904, 33-023906 |
| RI-10561 | | 2015 | Jean A. Keller | A Phase I Cultural Resources Assessment of Tentative Parcel Map 36733 APN 963-070-051 122.21 Acres of Land in the City of Murrieta, Riverside County, California, Township 7 South, Range 2 West, Section 6, SBM, USGS Murrieta, California Quadrangle, 7.5' Series | Jean A. Keller | 33-000716 |
| RI-10562 | Other - CUP03744; Other - CZ07909; Other - EA42889; Other - EA42894; Other - PM37082; Other - PP25998 | 2016 | Bai "Tom" Tang, Deirdre Encarnacion, Daniel Ballester, and Nina Gallardo | Phase I Archaeological Assessment: French Valley Industrial Park, Near the City of Murrieta, Riverside County, California | CRM TECH | |

Report List

| Report No. | Other IDs | Year | Author(s) | Title | Affiliation | Resources |
|------------|-----------|------|---|--|--------------------------|--|
| RI-10737 | | 2019 | M. Colleen Hamilton, Ken Moslak, and Evam Mills | Archaeological Construction Monitoring Report for the Clinton Keith Road Extension Project Near Murrieta, Riverside County, California | Applied EarthWorks | 33-023479, 33-023480, 33-023481, 33-023482, 33-023483, 33-023904, 33-023906 |
| RI-10816 | | 2016 | John J. Eddy | Discovery and Monitoring Plan for the Clinton Keith Road Extension Project Near Murrieta, Riverside County, California | Applied EarthWorks Inc. | 33-016689, 33-016990, 33-023478, 33-023479, 33-023480, 33-023481, 33-023482, 33-023483, 33-023904, 33-023906 |
| RI-10845 | | 2018 | Lindsay Porras, Tricia Dodds, Tiffany Clark, and Robert Ramirez | French Valley Auld and Leon Project, Riverside County, California, Phasel Cultural Resources Assessment. Rincon Consultants Project No. 18-06271. Report on file at the Eastern Information Cneter, Univerisity of California, Riverside | Rincon Consultants, Inc. | |

APPENDIX C

NATIVE AMERICAN SCOPING RECORD

NATIVE AMERICAN DISCRETIONARY NOTIFICATION RECORD

Native American “Scoping” Notification for the Proposed French Valley Commercial Retail Project in the County of Riverside

Date LSA Requested Sacred Lands File Search: May 18, 2021

Date Native American Heritage Commission Replied: June 2, 2021

Results of Sacred Lands File Search: failed to indicate presence of Native American cultural resources within the project but recommended LSA contact the groups/individuals listed below.

Date designated groups/individuals were notified: June 2 and 28, 2021

| Groups Contacted | Date LSA e-mailed Tribes | Date of follow-up email | Date and Results of Responses |
|--|---------------------------------|--------------------------------|--|
| Agua Caliente Band of Cahuilla Indians Jeff Grubbe, Chairperson Cahuilla | June 2, 2021 | June 28, 2021 | 6/9/2021: Lucy Padilla (Tribal Archaeologist) indicated the project is not located within the Tribe’s Traditional Use Area and the Tribe defers to the other tribes in the area. |
| Agua Caliente Band of Cahuilla Indians Patricia Garcia-Plotkin, Director Cahuilla | June 2, 2021 | June 28, 2021 | (See Ms. Padilla’s response above.) |
| Augustine Band of Cahuilla Mission Indians Amanda Vance, Chairperson Cahuilla | June 2, 2021 | June 28, 2021 | 6/28/2021: Victoria Martin (Tribal Secretary) responded indicating the Tribe has no specific information regarding cultural resources that may be affected by the proposed project, but requested immediate notification in the event any cultural resources are discovered. |
| Cabazon Band of Mission Indians Doug Welmas, Chairperson Cahuilla | June 2, 2021 | June 28, 2021 | |
| Cahuilla Band of Indians Daniel Salgado, Chairperson Cahuilla | June 2, 2021 | June 28, 2021 | |
| La Jolla Band of Luiseno Indians Norma Conreras, Chairperson c/o Angela Miner, Tribal Secretary Luiseno | June 2, 2021 | June 28, 2021 | |
| Los Coyotes Band of Mission Indians Shane Chapparosa, Chairperson Cahuilla | June 2, 2021 | June 28, 2021 | |
| Los Coyotes Band of Mission Indians Jacob Norte, Environmental Director Cahuilla | June 2, 2021 | June 28, 2021 | |
| Morongos Band of Mission Indians Ann Brierty, THPO Cahuilla Serrano | June 2, 2021 | June 28, 2021 | |

| Groups Contacted | Date LSA e-mailed Tribes | Date of follow-up email | Date and Results of Responses |
|--|---------------------------------|--------------------------------|--|
| Morongongo Band of Mission Indians Robert Martin, Chairperson Cahuilla Serrano | June 2, 2021 | June 28, 2021 | |
| Pala Band of Mission Indians Shasta Gaughen, THPO Cupeno Luiseno | June 2, 2021 | June 28, 2021 | 6/30/21: (Shasta Gaughen, THPO) responded indicating the project is neither within the boundaries of the reservation nor the Tribe's Traditional Use Area. However, the following was requested: notification of project progress, especially in the event of expansion of the project area, access to reports of investigations, and/or any documentation that might be generated regarding previously reported or newly discovered sites, and that Approved Cultural Monitors be present on-site during all survey and all ground-disturbing activities. |
| Pauma Band of Luiseno Indians Temet Aguilar, Chairperson Luiseno | June 2, 2021 | June 28, 2021 | |
| Pechanga Band of Mission Indians Mark Macarro, Chairperson Luiseno | | June 28, 2021 | |
| Pechanga Band of Mission Indians Paul Macarro, Cultural Resources Coordinator Luiseno | June 2, 2021 | June 28, 2021 | |
| Quechan Tribe of the Fort Yuma Reservation Jill McCormick, THPO Quechan | June 2, 2021 | | 6/3/2021: Ms. McCormick responded indicating the Tribe does not wish to comment on this project, defers to the more local Tribes and supports their decisions with regard to the project. . |
| Quechan Tribe of the Fort Yuma Reservation Manfred Scott, Acting Chairman Kw'ts'an Cultural Committee Quechan | June 2, 2021 | June 28, 2021 | (See response from Ms. McCormick above) |
| Ramona Band of Cahuilla Mission Indians John Gomez, Environmental Coordinator Cahuilla | June 2, 2021 | June 28, 2021 | |
| Ramona Band of Cahuilla Mission Indians Joseph Hamilton, Chairperson Cahuilla | June 2, 2021 | June 28, 2021 | |
| Rincon Band of Luiseno Indians Cheryl Madrigal, THPO Luiseno | June 2, 2021 | | 6/22/2021: Ms. Madrigal responded indicating the project is within the Territory of the Luiseño people, and is also within Rincon's specific area of Historic interest. The Tribe has no knowledge of cultural resources within or near the project area. A cultural resources record search is recommended and access to the results is requested. It was also recommended that Pechanga be |

| Groups Contacted | Date LSA e-mailed Tribes | Date of follow-up email | Date and Results of Responses |
|---|---------------------------------|--------------------------------|--|
| | | | contacted. |
| Rincon Band of Luiseno Indians Bo Mazzetti, Chairperson Luiseno | June 2, 2021 | | (See response from Ms. Madrigal above) |
| San Luis Rey Band of Mission Indians San Luis Rey, Tribal Council Luiseno | June 2, 2021 | June 28, 2021 | |
| Santa Rosa Band of Cahuilla Indians Mercedes Estrada, Cahuilla | June 2, 2021 | June 28, 2021 | |
| Santa Rosa Band of Mission Indians Steven Estrada, Chairperson Cahuilla | June 2, 2021 | June 28, 2021 | |
| Soboba Band of Luiseno Indians Scott Cozart, Chairperson Cahuilla Luiseno | June 2, 2021 | June 28, 2021 | |
| Soboba Band of Luiseno Indians Joseph Ontiveros, THPO Cahuilla Luiseno | June 2, 2021 | June 28, 2021 | |
| Torres-Martinez Desert Cahuilla Indians Michael Mirelez, Cultural Resource Coordinator Cahuilla | June 2, 2021 | June 28, 2021 | |

From: [Rory Goodwin](#)
To: ["ACBCI-THPO@aguacaliente.net"](mailto:ACBCI-THPO@aguacaliente.net); [Padilla, Lacy \(TRBL\)](#)
Subject: FW: Native American Scoping for the French Valley Commercial Retail Project in Riverside County, California (EGR2101)
Date: Wednesday, June 2, 2021 4:38:00 PM
Attachments: [Fig 1 - ProjectLocation USGS.pdf](#)

June 2, 2021

Agua Caliente Band of Cahuilla Indians
Patricia Garcia-Plotkin, Director
5401 Dinah Shore Drive
Palm Springs, CA 92264

Subject: Native American Scoping for the French Valley Commercial Retail Project in Riverside County, California

Dear Ms. Garcia-Plotkin:

At the direction of the County of Riverside, LSA is conducting scoping notification for the French Valley Commercial Retail Project. The project includes 2.24 acres in Section 6 of Township 7 South, Range 2 West (*Bachelor Mt., California* quadrangle; see attached Figure 1). There will be ground disturbance associated with the project.

The results of the Sacred Lands File search conducted by the Native American Heritage Commission for this project were negative. No cultural resources were identified by the survey. Please let us know if you have any comments.

Sincerely,

LSA ASSOCIATES, INC.

Riordan Goodwin, RA
Archaeologist/Senior Cultural Resources Manager

Attachment: Figure 1 (Project Location)

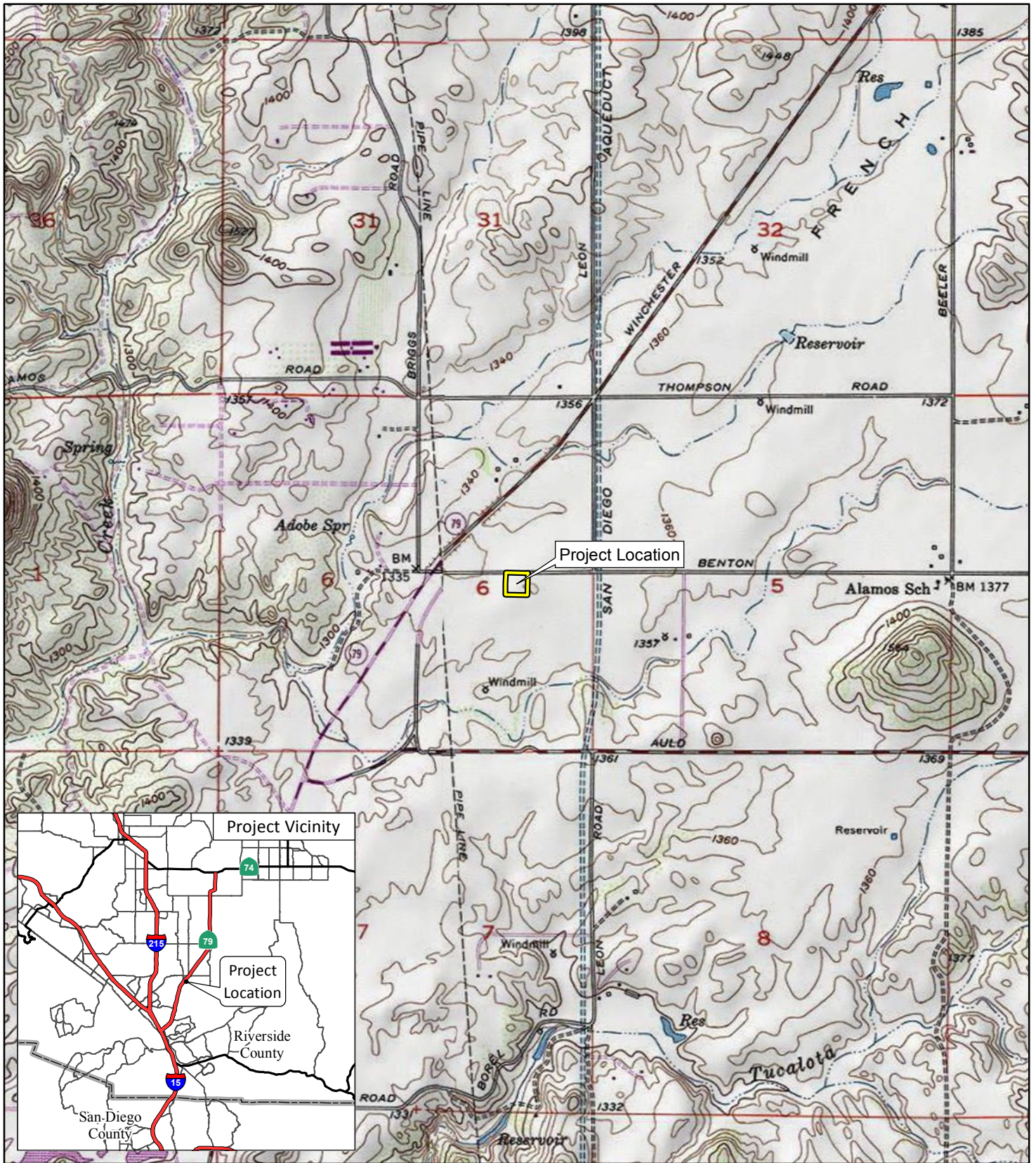


FIGURE 1

LSA

LEGEND

 Project Location



0 1000 2000
FEET

SOURCE: USGS 7.5' Quad - Murieta (1979), Bachelor Mtn (1978)

I:\EGR2101\GIS\MXD\ProjectLocation_USGS.mxd (5/16/2021)

French Valley
Commercial Retail Project
Project Location

From: [Padilla, Lacy \(TRBL\)](#)
To: [Rory Goodwin](#)
Subject: RE: Native American Scoping for the French Valley Commercial Retail Project in Riverside County, California (EGR2101)
Date: Wednesday, June 9, 2021 9:39:51 AM

Greetings,

A records check of the Tribal Historic preservation office's cultural registry revealed that this project is not located within the Tribe's Traditional Use Area. Therefore, we defer to the other tribes in the area. This letter shall conclude our consultation efforts.

Thank you,

Lacy Padilla

Archaeologist
Agua Caliente Band of Cahuilla Indians
5401 Dinah Shore Drive Palm Springs, CA 92264
D: 760-699-6956 | C: 760-333-5222

From: Rory Goodwin <Rory.Goodwin@lsa.net>
Sent: Wednesday, June 2, 2021 4:39 PM
To: THPO Consulting <ACBCI-THPO@aguacaliente.net>; Padilla, Lacy (TRBL) <lpadilla@aguacaliente.net>
Subject: FW: Native American Scoping for the French Valley Commercial Retail Project in Riverside County, California (EGR2101)

June 2, 2021

Agua Caliente Band of Cahuilla Indians

Patricia Garcia-Plotkin, Director

5401 Dinah Shore Drive

Palm Springs, CA 92264

Subject: Native American Scoping for the French Valley Commercial Retail Project in Riverside County, California

Dear Ms. Garcia-Plotkin:

At the direction of the County of Riverside, LSA is conducting scoping notification for the French Valley Commercial Retail Project. The project includes 2.24 acres in Section 6 of Township 7 South, Range 2 West (*Bachelor Mt., California* quadrangle; see attached Figure 1). There will be ground disturbance associated with the project.

The results of the Sacred Lands File search conducted by the Native American Heritage Commission for this project were negative. No cultural resources were identified by the survey. Please let us know if you have any comments.

Sincerely,

LSA ASSOCIATES, INC.

Riordan Goodwin, RA

Archaeologist/Senior Cultural Resources Manager

Attachment: Figure 1 (Project Location)

From: [Quechan Historic Preservation Officer](#)
To: [Rory Goodwin](#)
Subject: RE: Native American Scoping for the French Valley Commercial Retail Project in Riverside County, California (EGR2101)
Date: Thursday, June 3, 2021 6:57:48 AM

This email is to inform you that we have no comments on this project. We defer to the more local Tribes and support their decisions on the project.

From: Rory Goodwin [mailto:Rory.Goodwin@lsa.net]
Sent: Wednesday, June 02, 2021 3:47 PM
To: historicpreservation@quechantribe.com
Cc: scottmanfred@yahoo.com
Subject: FW: Native American Scoping for the French Valley Commercial Retail Project in Riverside County, California (EGR2101)

June 2, 2021

Quechan Tribe of the Fort Yuma Reservation
Jill McCormick, Tribal Historic Preservation Officer
P.O. Box 1899
Yuma, AZ, 85366

Subject: Native American Scoping for the French Valley Commercial Retail Project in Riverside County, California

Dear Ms. McCormick:

At the direction of the County of Riverside, LSA is conducting scoping notification for the French Valley Commercial Retail Project. The project includes 2.24 acres in Section 6 of Township 7 South, Range 2 West (*Bachelor Mt., California* quadrangle; see attached Figure 1). There will be ground disturbance associated with the project.

The results of the Sacred Lands File search conducted by the Native American Heritage Commission for this project were negative. No cultural resources were identified by the survey. Please let us know if you have any comments.

Sincerely,

LSA ASSOCIATES, INC.

Riordan Goodwin, RA
Archaeologist/Senior Cultural Resources Manager

Attachment: Figure 1 (Project Location)

Rincon Band of Luiseño Indians

CULTURAL RESOURCES DEPARTMENT

One Government Center Lane | Valley Center | CA 92082
(760) 749-1092 | Fax: (760) 749-8901 | rincon-nsn.gov



June 22, 2021

Sent only via email to: Rory.Goodwin@lsa.net

Re: French Valley Commercial Retail Project, Riverside County, California

Dear Mr. Goodwin,

This letter is written on behalf of the Rincon Band of Luiseño Indians (“Rincon Band” or “Band”), a federally recognized Indian Tribe and sovereign government. We have received your notification regarding the above referenced project and we thank you for the opportunity to provide information pertaining to cultural resources. The identified location is within the Territory of the Luiseño people, and is also within Rincon’s specific area of Historic interest.

Embedded in the Luiseño territory are Rincon’s history, culture and identity. We do not have knowledge of cultural resources within the proposed project area. However, this does not mean that none exist. We recommend that an archaeological record search be conducted and ask that a copy of the results be provided to the Rincon Band. Additionally, we recommend reaching out to the Pechanga Band of Luiseño Indians as they may have pertinent information to share.

If you have additional questions or concerns, please do not hesitate to contact our office at your convenience at (760) 749 1092 or via electronic mail at cmadrigal@rincon-nsn.gov. We look forward to working together to protect and preserve our cultural assets.

Sincerely,



Cheryl Madrigal
Tribal Historic Preservation Officer
Cultural Resources Manager



AUGUSTINE BAND OF CAHUILLA INDIANS
PO Box 846 84-481 Avenue 54 Coachella CA 92236
Telephone: (760) 398-4722
Fax (760) 369-7161
Tribal Chairperson: Amanda Vance
Tribal Vice-Chairperson: William Vance
Tribal Secretary: Victoria Martin

Date: June 28, 2021

RE: Native American Scoping for the French Valley Commercial Retail Project in Riverside County, California

Dear: Riordan Goodwin, RA
Archaeologist/Senior Cultural Resources Manager

Thank you for the opportunity to offer input concerning the development of the above-identified project. We appreciate your sensitivity to the cultural resources that may be impacted by your project and the importance of these cultural resources to the Native American peoples that have occupied the land surrounding the area of your project for thousands of years. Unfortunately, increased development and lack of sensitivity to cultural resources have resulted in many significant cultural resources being destroyed or substantially altered and impacted. Your invitation to consult on this project is greatly appreciated.

At this time, we are unaware of specific cultural resources that may be affected by the proposed project, however, in the event, you should discover any cultural resources during the development of this project please contact our office immediately for further evaluation.

Very truly yours,

Victoria Martin

Victoria Martin, Tribal Secretary
Augustine Band of Cahuilla Indians



TRIBAL HISTORIC PRESERVATION OFFICE
PALA BAND OF MISSION INDIANS
PMB 50, 35008 Pala Temecula Road | Pala, CA 92059
Phone 760-891-3510 | www.palatribe.com

June 30, 2021

Rory Goodwin
LSA Associates, Inc.

Re: French Valley Commercial Retail Project

Dear Rory Goodwin:

The Pala Band of Mission Indians Tribal Historic Preservation Office has received your notification of the project referenced above. This letter constitutes our response on behalf of Robert Smith, Tribal Chairman.

We have consulted our maps and determined that the project as described is not within the boundaries of the recognized Pala Indian Reservation. The project is also beyond the boundaries of the territory that the tribe considers its Traditional Use Area (TUA). It is, however, situated in close proximity to the Reservation and information generated would likely be useful in better understanding regional culture and history. Therefore, we request as a courtesy to be kept in the information loop as the project progresses and would appreciate being maintained on the receiving list for project updates, reports of investigations, and/or any documentation that might be generated regarding previously reported or newly discovered sites. Further, if the project boundaries are modified to extend beyond the currently proposed limits, we do request updated information and the opportunity to respond to your changes.

Finally, we recommend that Approved Cultural Monitors be present on-site during all survey and all ground-disturbing activities. If you do not have access to an Approved Cultural Resource Monitor, contact us and we will work with you to identify appropriately trained individuals.

We appreciate involvement with your initiative and look forward to working with you on future efforts. If you have questions or need additional information, please do not hesitate to contact Alexis Wallick by telephone at 760-891-3537 or by e-mail at awallick@palatribe.com. Pala is now offering tribal monitoring services. To arrange for Pala's cultural monitoring services, please contact Arthur Ayala by telephone at 760-891-3511 or by e-mail at aayala@palatribe.com.

Sincerely,

A handwritten signature in black ink that reads "Shasta Gaughen". The signature is written in a cursive, flowing style.

Shasta C. Gaughen, Ph.D.
Tribal Historic Preservation Officer
Pala Band of Mission Indians

APPENDIX D

LEVEL OF SIGNIFICANCE CHECKLIST

LEVEL OF SIGNIFICANCE CHECKLIST
For Archaeological and Historical Resources
(Attach to report)

| | | | | | |
|---|---|-------------------------------------|------------------|-----------|--|
| APN: | 963-070-018 | Project No. | PPT200033 | EA Number | |
| Potentially Significant Impact | Less than Significant with Mitigation Incorporated | Less than Significant Impact | No Impact | | |
| <i>(Check the level of significance that applies)</i> | | | | | |

Historic Resources

Would the project:

- | | | | | |
|--|--------------------------|--------------------------|--------------------------|-------------------------------------|
| a) Alter or destroy a historic site? | <input type="checkbox"/> | <input type="checkbox"/> | <input type="checkbox"/> | <input checked="" type="checkbox"/> |
| b) Cause a substantial adverse change in the significance of a historical resource as defined in California Code of Regulations, Section 15064.5? | <input type="checkbox"/> | <input type="checkbox"/> | <input type="checkbox"/> | <input checked="" type="checkbox"/> |
| c) Is the resource listed in, or determined to be eligible by the State Historical Resources Commission, for listing in the California Register of Historical Resources (Public Resource Code Section 5024.1)? | <input type="checkbox"/> | <input type="checkbox"/> | <input type="checkbox"/> | <input checked="" type="checkbox"/> |

Findings of Fact: No historic period built environment resources within project area.

Proposed Mitigation: None

Monitoring Proposed: None

Archaeological Resources

Would the project:

- | | | | | |
|--|--------------------------|--------------------------|--------------------------|-------------------------------------|
| a) Alter or destroy an archaeological site? | <input type="checkbox"/> | <input type="checkbox"/> | <input type="checkbox"/> | <input checked="" type="checkbox"/> |
| b) Cause a substantial adverse change in the significance of an archaeological resource as defined in the California Code of Regulations, Section 15064.5? | <input type="checkbox"/> | <input type="checkbox"/> | <input type="checkbox"/> | <input checked="" type="checkbox"/> |
| c) Disturb any human remains, including those interred outside of formal cemeteries? | <input type="checkbox"/> | <input type="checkbox"/> | <input type="checkbox"/> | <input checked="" type="checkbox"/> |
| d) Restrict existing religious or sacred uses within the potential impact area? | <input type="checkbox"/> | <input type="checkbox"/> | <input type="checkbox"/> | <input checked="" type="checkbox"/> |

Findings of Fact: No cultural resources were identified within or adjacent to the project area. However, despite these findings, the project area is bracketed by 15 prehistoric resources within a ½ mile, including a portion of a large habitation site. Therefore, despite the disturbances, the sensitivity for subsurface resources is moderate.

Proposed Mitigation: None.

Monitoring Proposed: Yes.

LEVEL OF SIGNIFICANCE CHECKLIST
For Archaeological and Historical Resources
(Attach to report)

Prepared By: Riordan Goodwin Date: July 7, 2021

Signature: *Riordan Goodwin*

| | |
|--------------------|-------------------------|
| County Use Only | |
| Received by: _____ | Date: _____ |
| PD-A No.: _____ | Related Case No.: _____ |

Form Revised May 2014