

COUNTY OF SACRAMENTO
MUNICIPAL SERVICES AGENCY
DEPARTMENT OF TRANSPORTATION

TREE INVENTORY LIST - Prepared by Henry Yasui, Snr. Landscape Architect & Hussein Abdu, Assoc. Landscape Architect - November 17, 2022

Arden Way Complete Street Phase 2 - Morse Ave to 640' West of Howe Ave

EXHIBIT

Legend	
20	Remove
67	Protect In Place

#	DESCRIPTION (dbh) inches	DRIPLINE (radius) feet	CANOPY AREA	VIGOR/ STRUCTURE	NOTES	SETTING/LOCATION	IMPACT & CONSTRUCTION NOTES
1	Mexican Fan Palm (12)	1	3.14	Good/Good		APN: 278-0223-009, North Side; Irrigated Planter 50%, Paved Area 50%	No Impact (protect in place)
2	Mexican Fan Palm (12)	1	3.14	Good/Good		APN: 278-0223-009, North Side; Irrigated Planter 50%, Paved Area 50%	No Impact (protect in place)
3	Crape Myrtle (6)	6	113.10	Good/Good		APN: 278-0223-027, North Side; Irrigated Planter 50%, Sidewalk 50%	6"-8" from BOC; (P) sidewalk to be placed @ ex. Sidewalk location (protect in place)
4	Crape Myrtle (6)	6	113.10	Good/Good		APN: 278-0223-027, North Side; Irrigated Planter 50%, Sidewalk 50%	6"-8" from BOC; (P) sidewalk to be placed @ ex. Sidewalk location (protect in place)
5	Crape Myrtle (7)	6	113.10	Good/Good		APN: 278-0223-027, North Side; Irrigated Planter 50%, Sidewalk 50%	6"-8" from BOC; (P) sidewalk to be placed @ ex. Sidewalk location (protect in place)
6	Crape Myrtle (7)	7	153.94	Good/Good		APN: 278-0223-027, North Side; Irrigated Planter 50%, Sidewalk 50%	6"-8" from BOC; (P) sidewalk to be placed @ ex. Sidewalk location (protect in place)
7	Crape Myrtle (7)	7	153.94	Good/Good		APN: 278-0223-027, North Side; Irrigated Planter 50%, Sidewalk 50%	6"-8" from BOC; (P) sidewalk to be placed @ ex. Sidewalk location (protect in place)
8	Crape Myrtle (8)	7	153.94	Good/Good		APN: 278-0223-027, North Side; Irrigated Planter 50%, Sidewalk 50%	6"-8" from BOC; (P) sidewalk to be placed @ ex. Sidewalk location (protect in place)
9	Hackberry (9)	12	452.39	Good/Good		APN: 278-0290-041, North Side; Irrigated Planter 80%, Paved Area 20%	No Impact (protect in place)
10	Hackberry (7)	11	380.13	Good/Good		APN: 278-0290-041, North Side; Irrigated Planter 80%, Paved Area 20%	No Impact (protect in place)
11	Hackberry (7)	11	380.13	Good/Good		APN: 278-0290-041, North Side; Irrigated Planter 80%, Paved Area 20%	No Impact (protect in place)
12	Hackberry (6)	9	254.47	Good/Good		APN: 278-0290-041, North Side; Irrigated Planter 80%, Paved Area 20%	No Impact (protect in place)
13	Stone Pine (24)	26	2,123.72	Good/Good		APN: 278-0290-041, North Side; Irrigated Planter 30%, Paved Area 70%	No Impact (protect in place)
14	Stone Pine (21)	20	1,256.64	Good/Fair		APN: 278-0290-041, North Side; Irrigated Planter 30%, Paved Area 70%	No Impact (protect in place)
15	Hackberry (16)	22	1,520.53	Good/Good		APN: 278-0290-043, North Side; Irrigated Planter 50%, Paved Area 50%	Minor Impact; 2' elevated from roadway, minimal surface roots (protect in place)
16	Hackberry (12)	16	804.25	Good/Good		APN: 278-0290-043, North Side; Irrigated Planter 50%, Paved Area 50%	Minor Impact; 2' elevated from roadway, minimal surface roots (protect in place)
17	Hackberry (14)	18	1,017.88	Good/Good		APN: 278-0290-043, North Side; Irrigated Planter 50%, Paved Area 50%	Minor Impact; 2' elevated from roadway, minimal surface roots (protect in place)
18	Hackberry (21)	27	2,290.22	Good/Good		APN: 278-0290-043, North Side; Irrigated Planter 50%, Paved Area 50%	Minor Impact; 2' elevated from roadway, minimal surface roots (protect in place)
19	Crape Myrtle (4)	6	113.10	Good/Good		APN: 278-0290-043, North Side; Irrigated Planter 50%, Paved Area 50%	Minor Impact; 2' elevated from roadway, minimal surface roots (protect in place)
20	Queen Palm (8)	8	201.06	Good/Good		APN: 278-0290-031, North Side; Irrigated Turf 90%, Sidewalk 10%	2'-8" from BOC, no impact (protect in place)
21	Queen Palm (8)	8	201.06	Good/Good		APN: 278-0290-031, North Side; Irrigated Turf 90%, Sidewalk 10%	2'-8" from BOC, no impact (protect in place)
22	Queen Palm (8)	8	176.71	Good/Good	8' Brown Trunk	APN: 278-0290-031, North Side; Irrigated Turf 90%, Sidewalk 10%	2'-8" from BOC, no impact (protect in place)

COUNTY OF SACRAMENTO
MUNICIPAL SERVICES AGENCY
DEPARTMENT OF TRANSPORTATION

TREE INVENTORY LIST - Prepared by Henry Yasui, Snr. Landscape Architect & Hussein Abdu, Assoc. Landscape Architect - November 17, 2022

Arden Way Complete Street Phase 2 - Morse Ave to 640' West of Howe Ave

EXHIBIT

Legend	
20	Remove
67	Protect In Place

#	DESCRIPTION (dbh) inches	DRIPLINE (radius) feet	CANOPY AREA	VIGOR/ STRUCTURE	NOTES	SETTING/LOCATION	IMPACT & CONSTRUCTION NOTES
23	Mexican Fan Palm (12)	8	201.06	Good/Good	3' Brown Trunk	APN: 278-0250-029, North Side; Non-Irrigated Planter 80%, Sidewalk 20%	Directly at BOC, minor impact (protect in place)
24	Crape Myrtle (4)	8	201.06	Good/Good		APN: 278-0260-034, North Side; Irrigated Planter 100%	Remove due to construction
25	Crape Myrtle (2.5)	4	50.27	Good/Good		APN: 278-0260-034, North Side; Irrigated Planter 100%	Remove due to construction
26	Crape Myrtle (1,1.5,2)	2	12.57	Good/Good		APN: 278-0260-034, North Side; Irrigated Planter 100%	Remove due to construction
27	Crape Myrtle (4.5,7)	18	1,017.88	Good/Good		APN: 278-0260-059, North Side; Irrigated Planter 100%	No Impact (protect in place)
28	Crape Myrtle (4)	4	50.27	Good/Good		APN: 278-0260-059, North Side; Irrigated Planter 100%	No Impact (protect in place)
29	Liquid Amber (23)	26	2,123.72	Good/Good		APN: 279-0243-011, North Side; Irrigated Turf 100%	Removal due to construction
30	Liquid Amber (17)	18	1,017.88	Good/Good		APN: 279-0243-011, North Side; Irrigated Turf 100%	Removal due to construction
31	Sycamore (8)	13	530.93	Good/Good	Minimal Surface Rooting	Irrigated Median 40%, Pavement 60%,	Minimal impact, new median curbing (protect in place)
32	Sycamore (8)	13	530.93	Good/Good	Minimal Surface Rooting	Irrigated Median 40%, Pavement 60%,	Minimal impact, new median curbing (protect in place)
33	Sycamore (6)	10	314.16	Good/Good	Minimal Surface Rooting	Irrigated Median 40%, Pavement 60%,	Minimal impact, new median curbing (protect in place)
34	Sycamore (9)	16	804.25	Good/Good	Minimal Surface Rooting	Irrigated Median 40%, Pavement 60%,	Minimal impact, new median curbing (protect in place)
35	Sycamore (6)	8	201.06	Good/Good		Irrigated Median 40%, Pavement 60%,	Minimal impact, new median curbing (protect in place)
36	Sycamore (7)	13	530.93	Good/Good		Irrigated Median 40%, Pavement 60%,	Minimal impact, new median curbing (protect in place)
37	Sycamore (7)	15	706.86	Good/Good		Irrigated Median 40%, Pavement 60%,	Minimal impact, new median curbing (protect in place)
38	Sycamore (10)	15	706.86	Good/Fair	Topped due to overhead utilities	Irrigated Median 40%, Pavement 60%,	Minimal impact, new median curbing (protect in place)
39	Crape Myrtle (2)	2	12.57	Good/Good		APN: 285-0010-020, South Side; Irrigated Planter 50%, Paved Area 50%	Remove due to construction
40	Southern Magnolia (8)	11	380.13	Good/Good		APN: 285-0010-020, South Side; Irrigated Planter 50%, Paved Area 50%	Remove due to construction
41	Southern Magnolia (7)	11	380.13	Good/Good		APN: 285-0010-020, South Side; Irrigated Planter 50%, Paved Area 50%	Remove due to construction
42	Southern Magnolia (7)	10	314.16	Good/Good		APN: 285-0010-020, South Side; Irrigated Planter 50%, Paved Area 50%	Remove due to construction
43	Southern Magnolia (4,7)	11	380.13	Good/Good		APN: 285-0010-020, South Side; Irrigated Planter 50%, Paved Area 50%	Remove due to construction
44	Southern Magnolia (9)	12	452.39	Good/Good		APN: 285-0010-021, South Side; Irrigated Planter 30%, Paved Area 70%	Remove due to construction
45	Southern Magnolia (6)	10	314.16	Fair/Fair		APN: 285-0010-021, South Side; Irrigated Planter 30%, Paved Area 70%	Remove due to construction
46	Southern Magnolia (7)	14	615.75	Good/Good		APN: 285-0010-021, South Side; Irrigated Planter 30%, Paved Area 70%	Remove due to construction

COUNTY OF SACRAMENTO
MUNICIPAL SERVICES AGENCY
DEPARTMENT OF TRANSPORTATION

TREE INVENTORY LIST - Prepared by Henry Yasui, Snr. Landscape Architect & Hussein Abdu, Assoc. Landscape Architect - November 17, 2022

Arden Way Complete Street Phase 2 - Morse Ave to 640' West of Howe Ave

EXHIBIT

Legend	
20	Remove
67	Protect In Place

#	DESCRIPTION (dbh) inches	DRIPLINE (radius) feet	CANOPY AREA	VIGOR/ STRUCTURE	NOTES	SETTING/LOCATION	IMPACT & CONSTRUCTION NOTES
47	Southern Magnolia (9)	12	452.39	Good/Good		APN: 285-0010-021, South Side; Irrigated Planter 30%, Paved Area 70%	Remove due to construction
48	Southern Magnolia (14)	21	1,385.44	Good/Poor	Large wound in trunk	APN: 285-0010-021, South Side; Irrigated Planter 30%, Paved Area 70%	Remove due to construction
49	Chanticleer Pear (8)	10	314.16	Good/Good		APN: 285-0021-015, South Side; Irrigated Planter 40%, Paved Area 60%	Remove due to construction
50	Crape Myrtle (2)	1	3.14	Good/Good		APN: 285-0021-025, South Side; Irrigated Planter 100%	Remove due to construction
51	Crape Myrtle (3)	2	12.57	Good/Good		APN: 285-0021-025, South Side; Irrigated Planter 100%	Remove due to construction
52	Red Maple (3)	5	78.54	Good/Good		APN: 285-0022-031, South Side; Irrigated Planter 100%	No Impact (protect in place)
53	Red Maple (3)	4	50.27	Good/Good		APN: 285-0022-031, South Side; Irrigated Planter 100%	No Impact (protect in place)
54	Red Maple (3)	3	28.27	Good/Good		APN: 285-0022-031, South Side; Irrigated Planter 100%	No Impact (protect in place)
55	Sycamore (22)	20	1,256.64	Good/Fair		APN: 285-0031-019, South Side; Irrigated Planter 80%, Paved Area 20%	Minimal impact (protect in place)
56	Sycamore (18)	25	1,963.50	Good/Good		APN: 285-0031-019, South Side; Irrigated Planter 80%, Paved Area 20%	Remove due to construction
57	Sycamore (23)	31	3,019.07	Good/Good		APN: 285-0031-019, South Side; Irrigated Planter 80%, Paved Area 20%	New bus pad (protect in place)
58	Elm (20)	29	2,642.08	Good/Good		APN: 285-0031-019, South Side; Irrigated Planter 60%, Paved Area 40%	Minimal Impact (protect in place)
59	Purple Leaf Plum (9)	12	452.39	Good/Good		APN: 285-0031-032, South Side; Irrigated Turf 70%, Paved Area 30%	No Impact (protect in place)
60	Purple Leaf Plum (8)	11	380.13	Good/Good		APN: 285-0031-032, South Side; Irrigated Turf 70%, Paved Area 30%	No Impact (protect in place)
61	Purple Leaf Plum (7)	10	314.16	Good/Good		APN: 285-0031-032, South Side; Irrigated Turf 70%, Paved Area 30%	No Impact (protect in place)
62	Sycamore (18)	30	2,827.43	Good/Good		APN: 285-0032-002, South Side; Backyard 90%, Sidewalk 10%	No Impact (protect in place)
63	Modesto Ash (30)	25	1,963.50	Good/Good		APN: 285-0032-002, South Side; Backyard 90%, Sidewalk 10%	No Impact (protect in place)
64	Modesto Ash (30)	30	2,827.43	Good/Good		APN: 285-0033-001, South Side; Backyard 80%, Paved Area 20%	No Impact (protect in place)
65	Crape Myrtle (9)	12	452.39	Good/Good		APN: 285-0040-005, South Side; Irrigated Turf 100%	No Impact (protect in place)
66	Red Maple (8)	8	201.06	Good/Good		APN: 285-0040-005, South Side; Irrigated Turf 100%	No Impact (protect in place)
67	Chanticleer Pear (12)	16	804.25	Good/Good		APN: 285-0040-005, South Side; Irrigated Turf 100%	No Impact (protect in place)
68	Redwood (24)	18	1,017.88	Good/Good		APN: 285-0040-046, South Side; Irrigated Turf 95%, Sidewalk 5%	No Impact (protect in place)
69	Redwood (24)	15	706.86	Good/Good	Parking Lot Shade Tree	APN: 285-0040-046, South Side; Irrigated Turf 80%, Paved Area 20%	No Impact (protect in place)
70	Redwood (25)	16	804.25	Good/Good		APN: 285-0040-046, South Side; Irrigated Turf 95%, Sidewalk 5%	No Impact (protect in place)
71	Tulip Tree (14)	14	615.75	Good/Good		APN: 285-0040-045, South Side; Irrigated Planter 90%, Paved Area 10%	Minimal impact (protect in place)
72	Stone Pine (36)	32	3,216.99	Good/Good		APN: 285-0040-044, South Side; Non-Irrigated Planter 50%, Paved Area/Channel 50%	No Impact (protect in place)
73	Pin Oak (11)	20	1,256.64	Good/Good		APN: 286-0011-001, South Side; Irrigation Planter 40%, Paved Area 60%	Minimal impact (protect in place)
74	Pin Oak (8.5)	16	804.25	Good/Good		APN: 286-0011-001, South Side; Irrigation Planter 40%, Paved Area 60%	Minimal impact (protect in place)
75	Pin Oak (9.5)	20	1,256.64	Good/Good		APN: 286-0011-028, South Side; Irrigation Planter 40%, Paved Area 60%	Minimal impact (protect in place)

COUNTY OF SACRAMENTO
MUNICIPAL SERVICES AGENCY
DEPARTMENT OF TRANSPORTATION

TREE INVENTORY LIST - Prepared by Henry Yasui, Snr. Landscape Architect & Hussein Abdu, Assoc. Landscape Architect - November 17, 2022

Arden Way Complete Street Phase 2 - Morse Ave to 640' West of Howe Ave

EXHIBIT

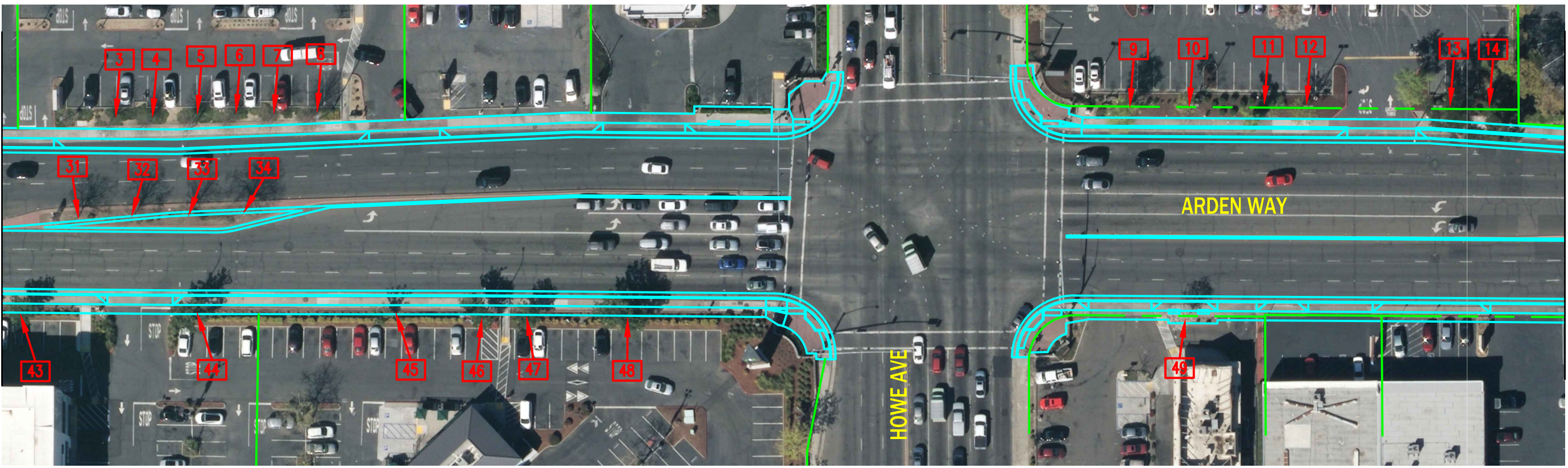
Legend	
20	Remove
67	Protect In Place

#	DESCRIPTION (dbh) inches	DRIPLINE (radius) feet	CANOPY AREA	VIGOR/ STRUCTURE	NOTES	SETTING/LOCATION	IMPACT & CONSTRUCTION NOTES
76	Mexican Fan Palm (26)	7	153.94	Good/Good	25'+ Brown Trunk	APN: 286-0011-028, South Side; Non-Irrigated Planter 100%	Minimal impact (protect in place)
77	Mexican Fan Palm (15.5,13)	8	201.06	Good/Fair	Dual Trunk, 20' & 15' Brown Trunk; Lean	APN: 286-0011-031, South Side; Non-Irrigated Planter 100%	Minimal impact (protect in place)
78	Mexican Fan Palm (16.5)	6	113.10	Good/Good	30'+ Brown Trunk	APN: 286-0011-030, South Side; Non-Irrigated Planter 100%	No Impact (protect in place)
79	Mexican Fan Palm (15.5)	8	201.06	Good/Good	30'+ Brown Trunk	APN: 286-0011-030, South Side; Non-Irrigated Planter 100%	No Impact (protect in place)
80	Redwood (29.5)	13	530.93	Good/Good		APN: 286-0021-031, South Side; Irrigated Turf 90%, Sidewalk 10%	No Impact (protect in place)
81	Redwood (40)	21	1,385.44	Good/Good		APN: 286-0021-031, South Side; Irrigated Turf 90%, Sidewalk 10%	No Impact (protect in place)
82	Pistache (12)	15	706.86	Good/Fair	Topped	APN: 286-0022-048, South Side; Irrigated Turf 50%, Paved Area 50%	Minimal impact (protect in place)
83	Pistache (8.5)	14	615.75	Good/Good		APN: 286-0022-048, South Side; Irrigated Turf 80%, Sidewalk 20%	3.5' from BOW (protect in place)
84	Mexican Fan Palm (18)	6	113.10	Good/Good	40'+ Brown Trunk	APN: 286-0022-030, South Side; Irrigated Planter 70%, Paved Area 30%	Minimal impact (protect in place)
85	Pistache (6)	12	452.39	Good/Good		APN: 286-0022-032, South Side; Irrigated Planter 70%, Paved Area 30%	Minimal impact (protect in place)
86	Redwood (22)	10	314.16	Good/Good	Tight planter shared w/ two additional redwoods	APN: 286-0022-032, South Side; Irrigated Planter 70%, Paved Area 30%	Impact due to removal of adjacent dual redwood (protect in place). Certified Arborist may be necessary to advise
87	Redwood (17,22)	12	415.48	Good/Fair	Tight planter	APN: 286-0022-047, South Side; Irrigated Planter 70%, Paved Area 30%	Removal due to construction
88	Redwood (33)	19	1,134.11	Good/Good		APN: 286-0022-047, South Side; Irrigated Turf 90%, Paved Area 10%	No Impact (protect in place)
Total Canopy Area SF			45,638.70				
Total Canopy Area Lost SF			5,332.07				



MATCH LINE - SEE BELOW

MATCH LINE - SEE ABOVE



MATCH LINE - SEE SHEET C2



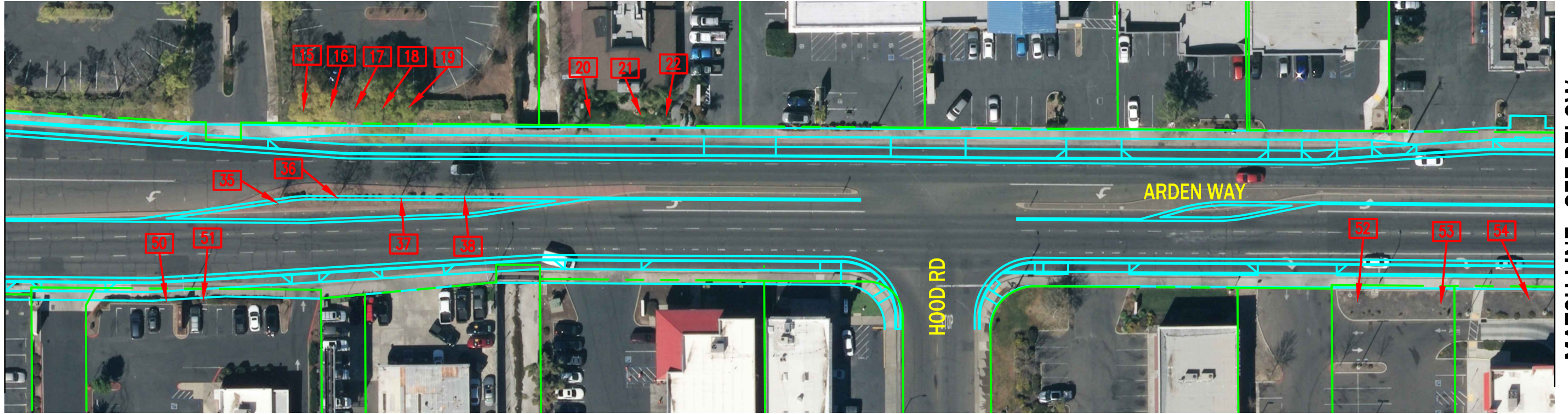

 COMMUNITY SERVICES AGENCY
SACRAMENTO
 COUNTY

 DEPARTMENT OF TRANSPORTATION

EXHIBIT C2 - PRELIMINARY TREE INVENTORY MAP
 ARDEN WAY COMPLETE STREETS PHASE 2
 ARDEN WAY – ETHAN WAY TO MORSE AVE

DATE: DECEMBER 2022	HORIZONTAL SCALE: 1"=60'	VERTICAL SCALE: NONE	DRAWN BY: KRG	DESIGN BY: KRG	CHECK BY: KRG	DWG C1 of C5
---------------------	--------------------------	----------------------	---------------	----------------	---------------	--------------

MATCH LINE - SEE SHEET C1



MATCH LINE - SEE BELOW

MATCH LINE - SEE ABOVE



MATCH LINE - SEE SHEET C3



EXHIBIT C2 - PRELIMINARY TREE INVENTORY MAP
 ARDEN WAY COMPLETE STREETS PHASE 2
 ARDEN WAY – ETHAN WAY TO MORSE AVE

DATE: DECEMBER 2022

HORIZONTAL SCALE: 1"=60'

VERTICAL SCALE: NONE

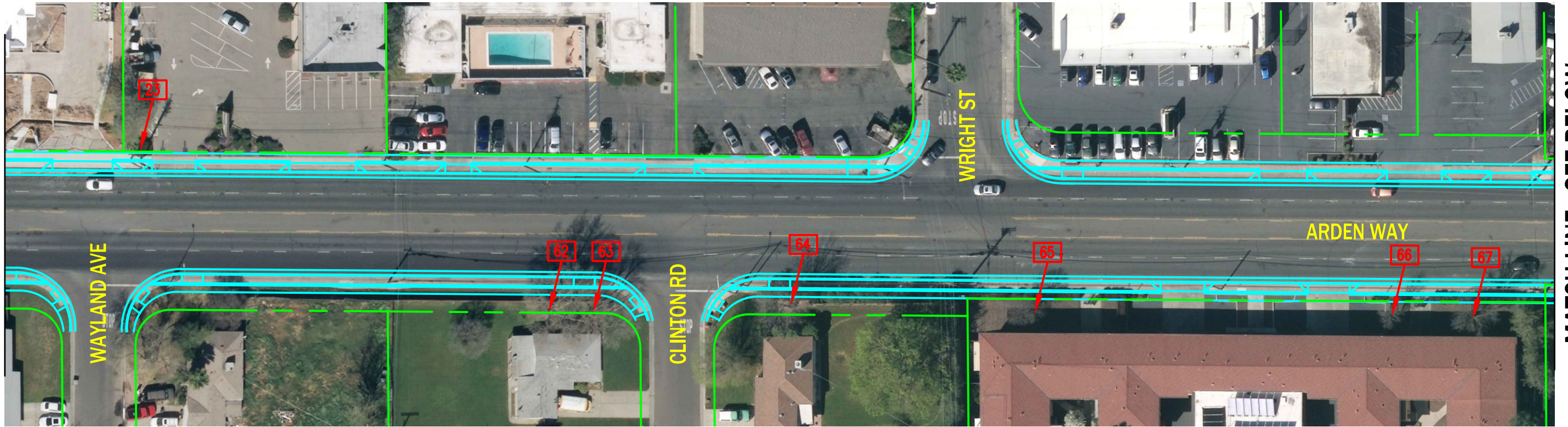
DRAWN BY: KRG

DESIGN BY: KRG

CHECK BY: KRG

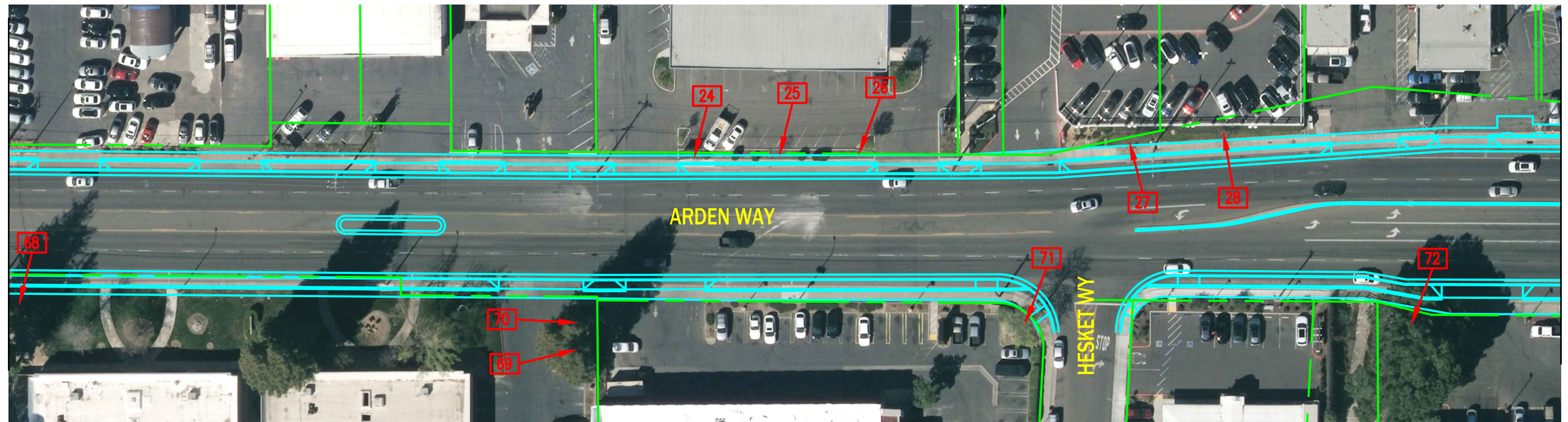
DWG C2 of C5

MATCH LINE - SEE SHEET C2



MATCH LINE - SEE BELOW

MATCH LINE - SEE ABOVE



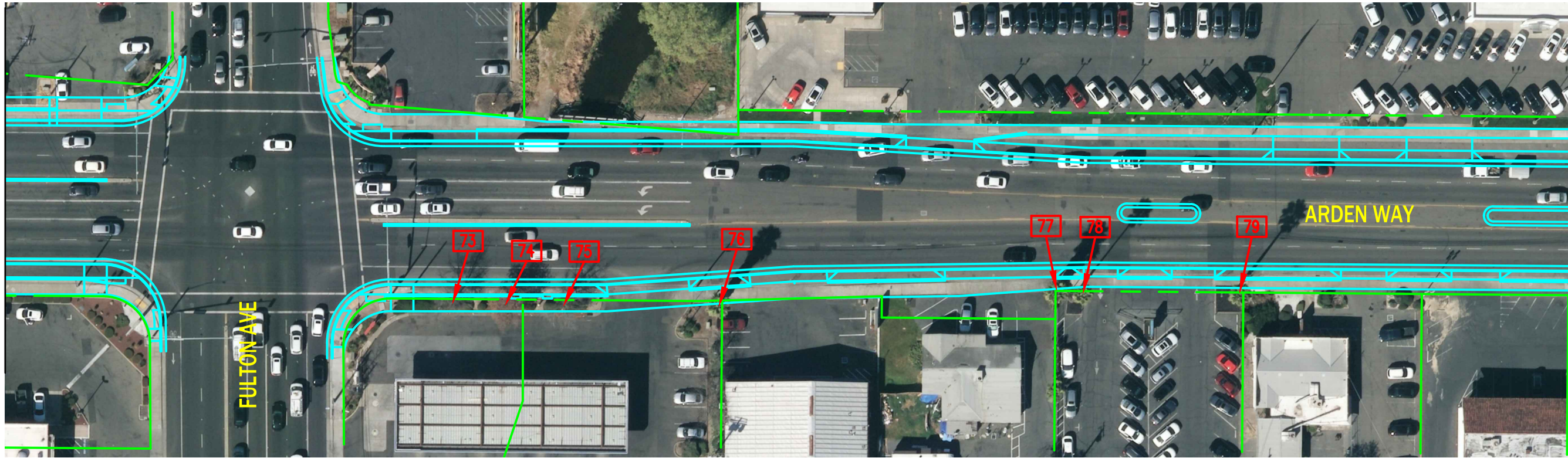
MATCH LINE - SEE SHEET C4



EXHIBIT C2 - PRELIMINARY TREE INVENTORY MAP
 ARDEN WAY COMPLETE STREETS PHASE 2
 ARDEN WAY – ETHAN WAY TO MORSE AVE

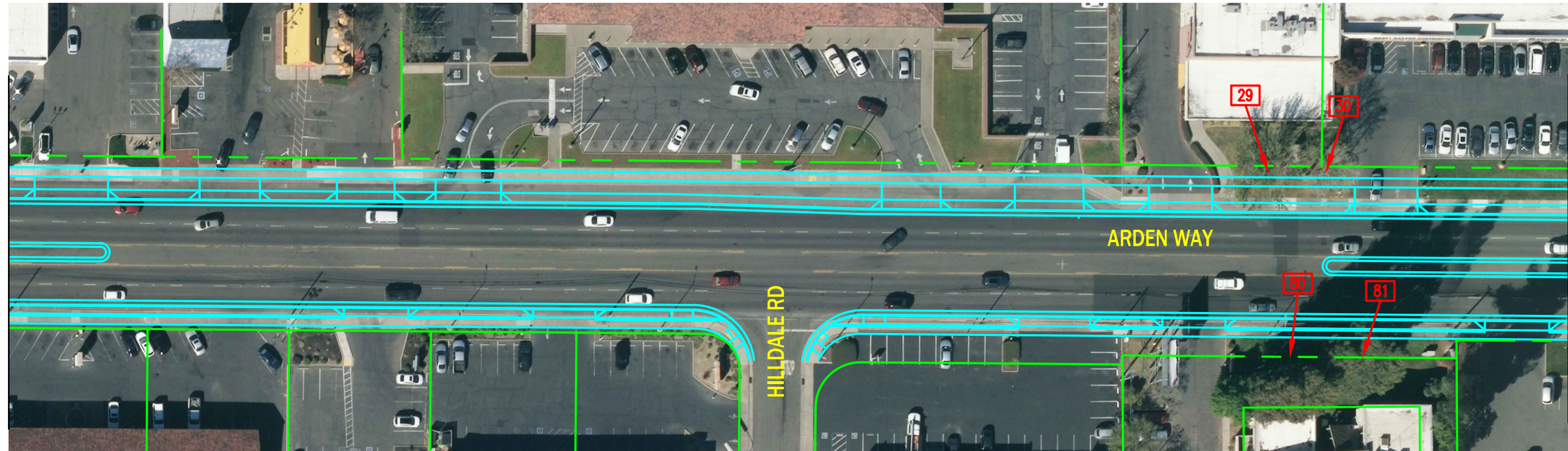
DATE: DECEMBER 2022	HORIZONTAL SCALE: 1"=60'	VERTICAL SCALE: NONE	DRAWN BY: KRG	DESIGN BY: KRG	CHECK BY: KRG	DWG C3 OF C5
---------------------	--------------------------	----------------------	---------------	----------------	---------------	--------------

MATCH LINE - SEE SHEET C3



MATCH LINE - SEE BELOW

MATCH LINE - SEE ABOVE



MATCH LINE - SEE SHEET C5



EXHIBIT C2 - PRELIMINARY TREE INVENTORY MAP
 ARDEN WAY COMPLETE STREETS PHASE 2
 ARDEN WAY – ETHAN WAY TO MORSE AVE

DATE: DECEMBER 2022

HORIZONTAL SCALE: 1"=60'

VERTICAL SCALE: NONE

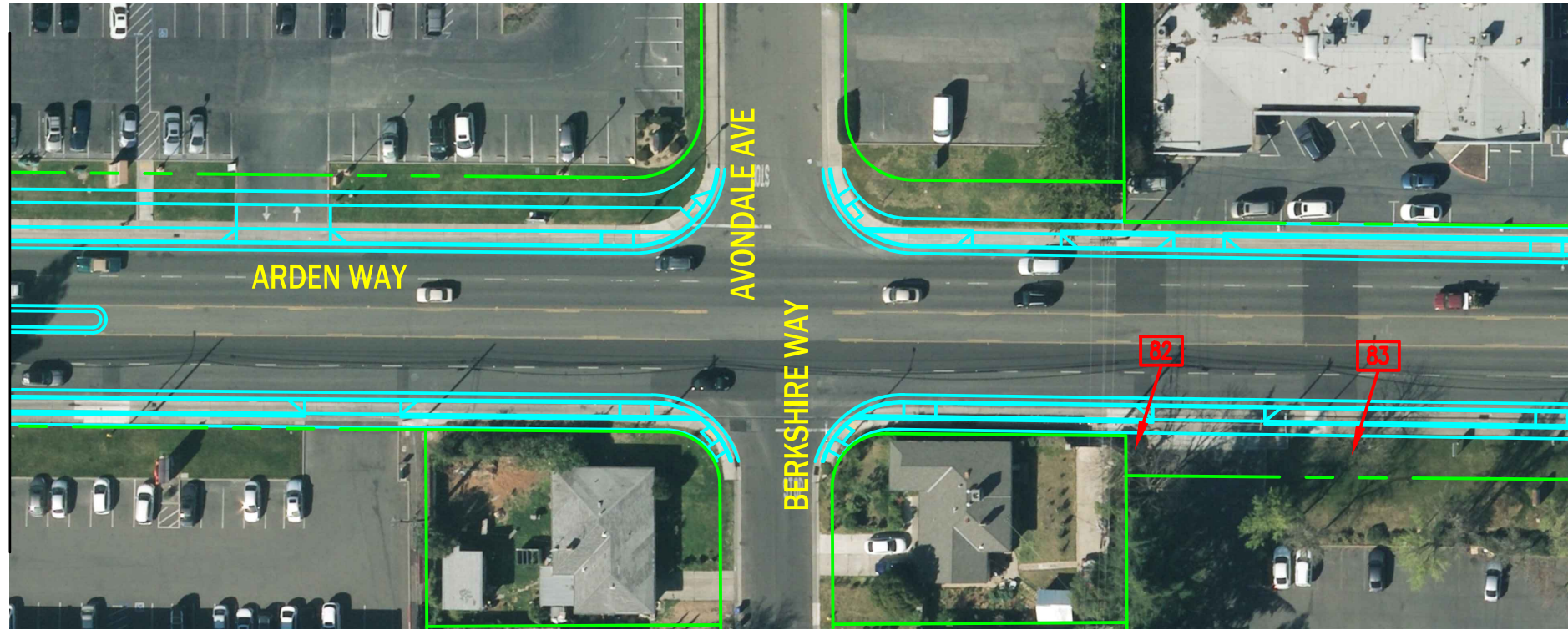
DRAWN BY: KRG

DESIGN BY: KRG

CHECK BY: KRG

DWG C4 of C5

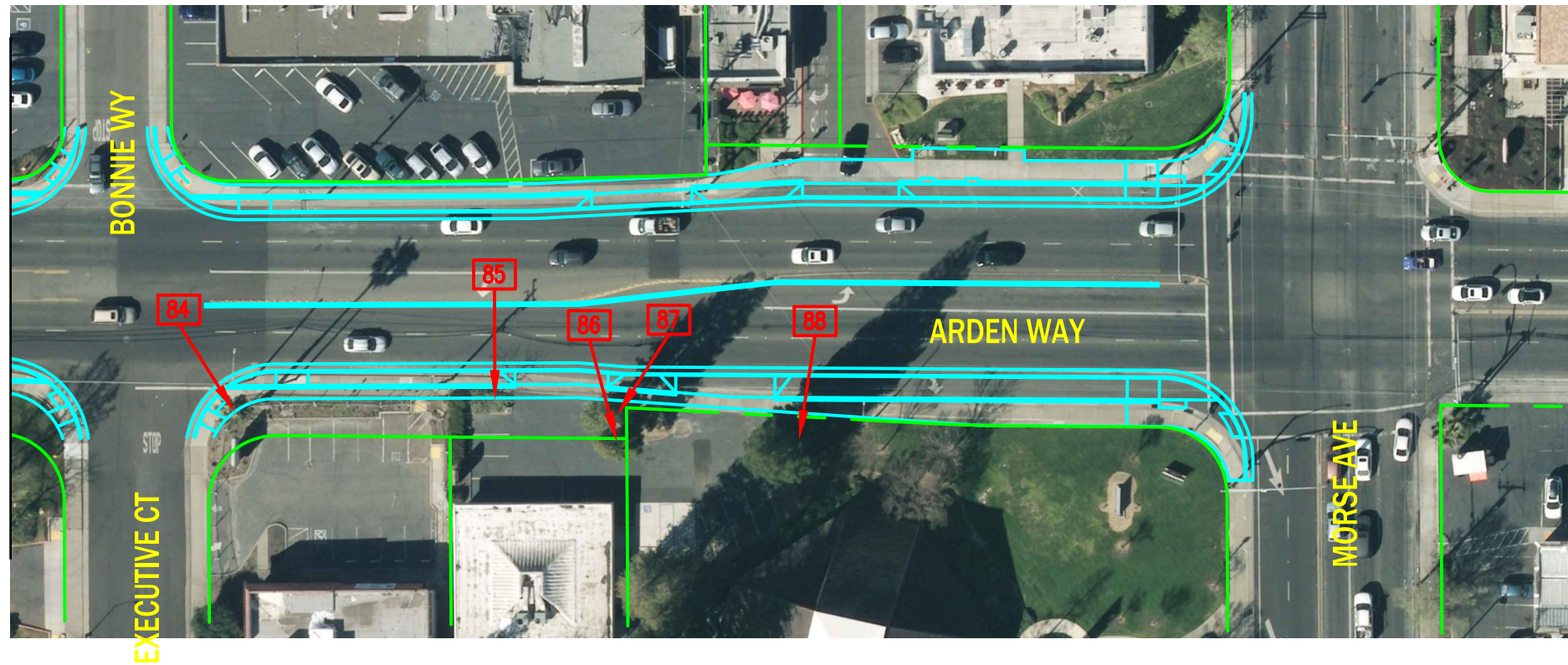
MATCH LINE - SEE SHEET C4



MATCH LINE - SEE BELOW



MATCH LINE - SEE ABOVE




 COMMUNITY SERVICES AGENCY
SACRAMENTO
 COUNTY
 DEPARTMENT OF TRANSPORTATION



EXHIBIT C2 - PRELIMINARY TREE INVENTORY MAP
 ARDEN WAY COMPLETE STREETS PHASE 2
 ARDEN WAY – ETHAN WAY TO MORSE AVE

DATE: DECEMBER 2022

HORIZONTAL SCALE: 1"=60'

VERTICAL SCALE: NONE

DRAWN BY: KRG

DESIGN BY: KRG

CHECK BY: KRG

DWG **C5** of **C5**