

California Department of Transportation

DISTRICT 7
100 SOUTH MAIN STREET, SUITE 100 | LOS ANGELES, CA 90012
PHONE (213) 897-0362 | FAX (213) 897-0360 TTY 711
www.dot.ca.gov



February 7, 2024

Agencies, Organizations, and Individuals Interested in the
SR-118 Weigh Station Project

Notice of Intent (NOI) to Adopt a Negative Declaration for SR-118 Weigh Station Project

The California Department of Transportation (Caltrans) proposes to construct Commercial Vehicle Enforcement Facilities (CVEF) in the eastbound direction of State Route 118 (SR-118), between Hitch Boulevard and Montair Drive in the City of Moorpark in the County of Ventura. The CVEF will allow the California Highway Patrol (CHP) to monitor truck flow, enhance transportation safety issues, and reduce highway cost maintenance associated with overloaded trucks.

The proposed project includes a CVEF with additional truck parking behind the facility and truck inspection canopy. In addition, the proposed project includes the following work:

- New off-ramp to CVEF and on-ramp onto eastbound SR-118
- Shoulder widening from 4 feet to 8 feet (on the side of the CVEF only) between Hitch Boulevard and Montair Drive
- Protective concrete barrier between the travel lane and the facility
- Auto-lane closure system
- Weigh-in-Motion (WIM) on the mainline
- CHP building structures and equipment for CHP field inspection
- Truck inspection/turn lanes to provide off-highway access for trucks and personnel vehicles
- Lighting in the inspection and out-of-service area

Caltrans District 7 has studied the effect this project may have on the environment and has prepared an Initial Study (IS). Based on this study, it is determined that the proposed action will not have a significant effect on the environment with the incorporation of standard avoidance and minimization measures and therefore proposes a Negative Declaration (ND) determination.

The Draft IS is available online at <https://dot.ca.gov/caltrans-near-me/district-7/district-7-programs/d7-environmental-docs> and at the Moorpark Public Library at 699 Moorpark Ave., Moorpark CA. 93021 on weekdays from 10:00 am to 5:00 pm.

Written comments on the Draft IS may be submitted via email or by postal mail no later than **Friday, March 22nd, 2024**, to:

Susan Tse Koo, Senior Environmental Scientist
California Department of Transportation
Division of Environmental Planning (SR-118 Weigh Station Project)
100 South Main Street MS-16A
Los Angeles, CA 90012

Thank you for your interest in this important transportation project. If you have any further questions/comments or would like to schedule a public hearing, please contact Susan Tse Koo, Senior Environmental Scientist at Susan.Tse@dot.ca.gov.

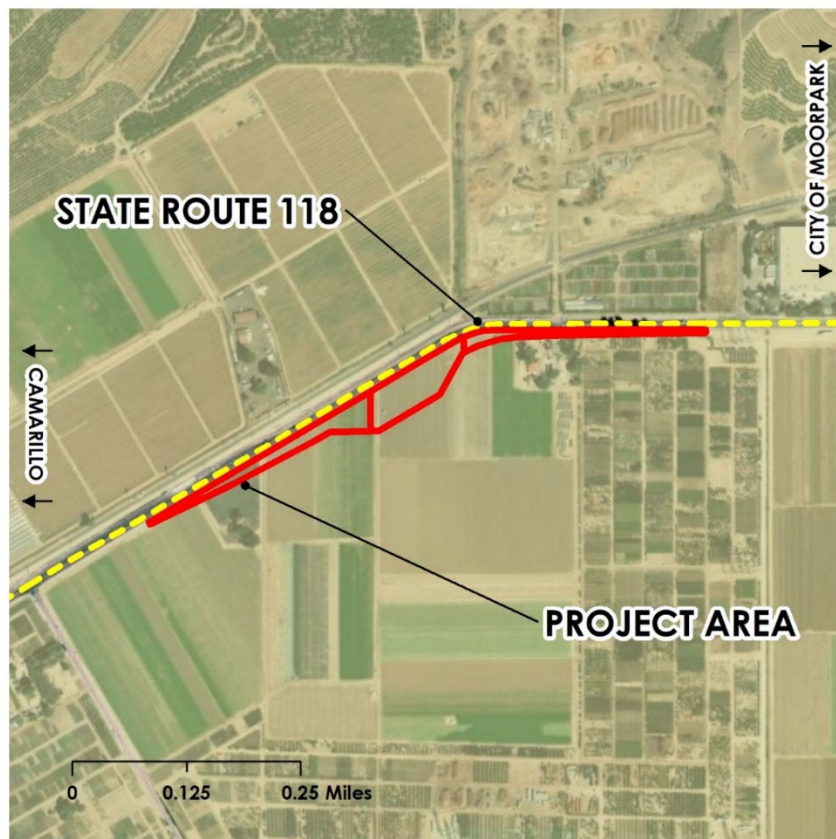
Sincerely,

Kelly Ewing-Toledo

KELLY EWING-TOLEDO

Deputy Director, Division of Environmental Planning
California Department of Transportation District 7

VICINITY MAP



"Provide a safe and reliable transportation network that serves all people and respects the environment"