

NOTICE OF INTENT TO ADOPT MITIGATED NEGATIVE DECLARATION

This notice is to inform the public and interested agencies that in accordance with the California Environmental Quality Act (CEQA), the McMullin Area Groundwater Sustainability Agency is circulating the Aquaterra Water Bank Project Initial Study/Mitigated Negative Declaration (MND) for public comment.

Project Location: The project is located in unincorporated agricultural lands in Fresno County, approximately 20 miles southwest of Fresno, and southwest of Kerman (please see attached figures).

Project Description: The Aquaterra Water Bank Project is located in Fresno County and the Kings Subbasin, northeast of Helm, west of Kerman, and southwest of Fresno. The Project is intended to meet two primary objectives:

1. Establish the Aquaterra Water Bank for use by local, regional, and statewide entities to improve their use of available surface water supplies; and,
2. Help MAGSA in achieving sustainable groundwater management for local water and agricultural sustainability, in compliance with the Sustainable Groundwater Management Act.

Project features include the following:

-Conveyance Infrastructure and Temporary Construction Easements: 63.5 linear miles by 200 feet horizontal width, which includes the main canals levees, lateral levees, pump stations along the main canals with pumps, recovery wells, staging areas, and road crossings.

- 3,294 acres of farmland to be used for recharge basins.

- Construction will take approximately 3.5 years.

Document Availability: The Initial Study/MND will be available for review on MAGSA's website beginning on Tuesday, March 19, 2024. The website can be accessed at <https://aquaterra.mcmullinarea.org/>.

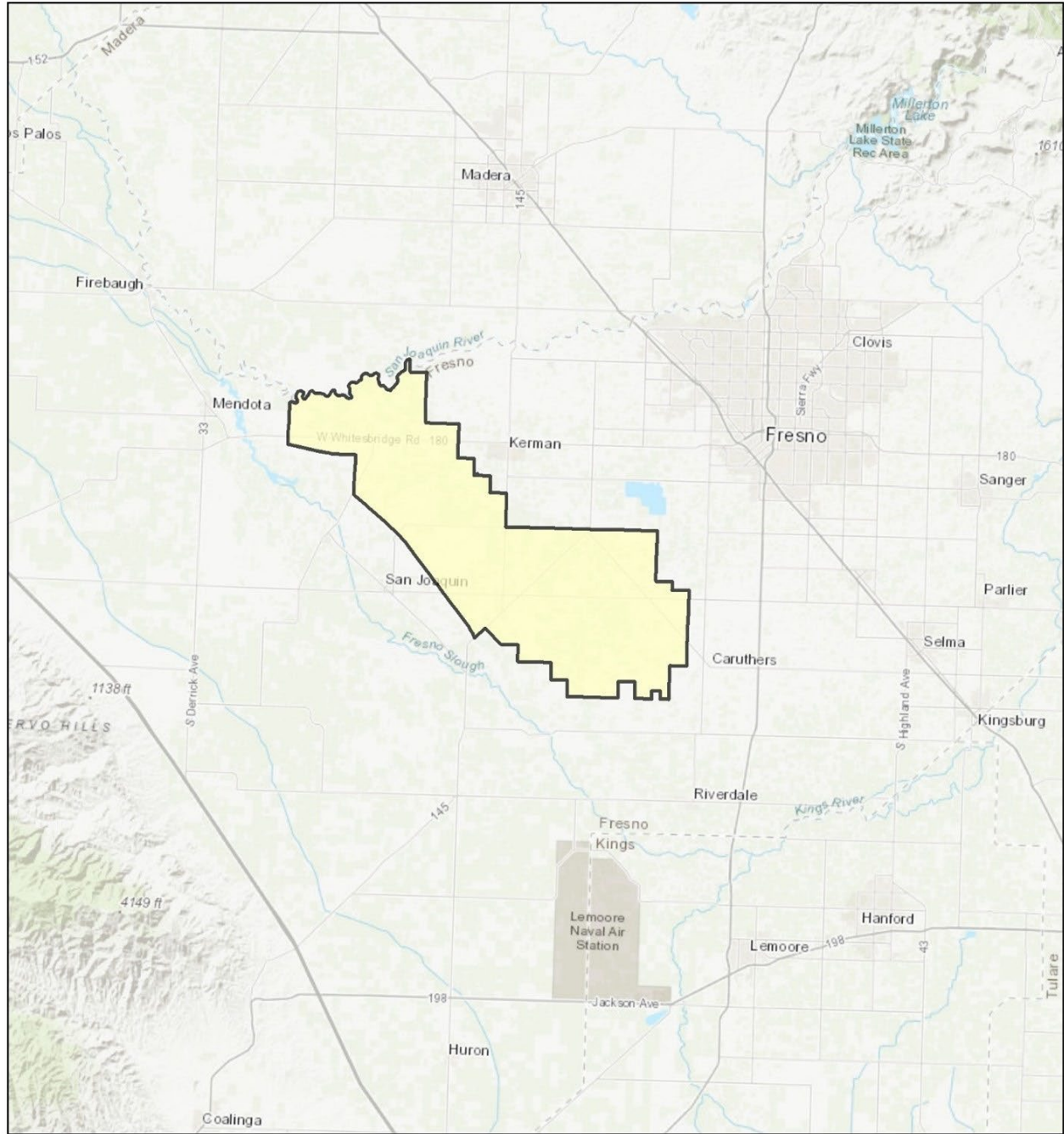
Public Review Period: The 30-day public review period for the Initial Study/MND is from March 19, 2024 to April 18, 2024.

Comments: Any person who wishes to comment on MAGSA's intent to adopt the MND must submit written comments no later than 5:00 PM on April 18, 2024. Written comments may be sent to:

Matt Hurley, General Manager
McMullin Area GSA
275 S. Madera Ave, Suite 301
Kerman, CA 93630

Comments may also be sent by email to comments@mcmullinarea.org or submitted directly via MAGSA's website (see URL above).

Project Impacts: Based on the findings of the Initial Study, it has been determined that the project will not have a significant effect upon the environment based on mitigating measures, which will be attached to the project as conditions of approval. A Mitigated Negative Declaration has been prepared outlining a Mitigation Monitoring and Reporting Plan to mitigate any potentially significant impacts to less than significant.



MAGSA Regional Location



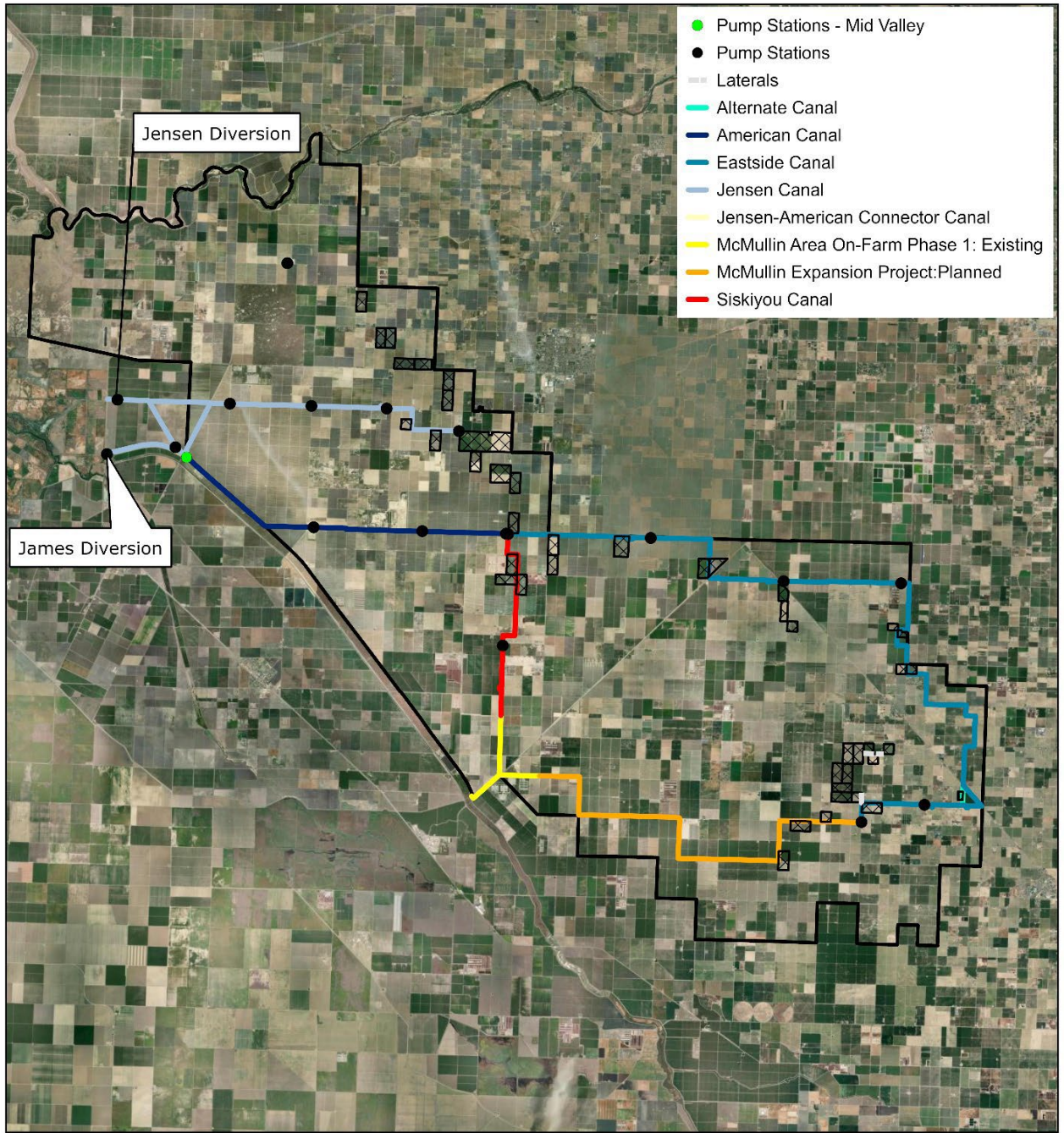
 MAGSA Boundary



SCALE = 1:126,720

Coordinate System: NAD 1983 UTM Zone 11N

Source: MAGSA 2022, ESRI 2022



MAGSA Project Features

	Recharge Basin
	MAGSA Boundary

Sources: MAGSA 2022, ESRI 2022, Provost and Pritchard 2023

0 1 2 3 4 Mi

SCALE = 1:126,720

Coordinate System: NAD 1983 UTM Zone 11N