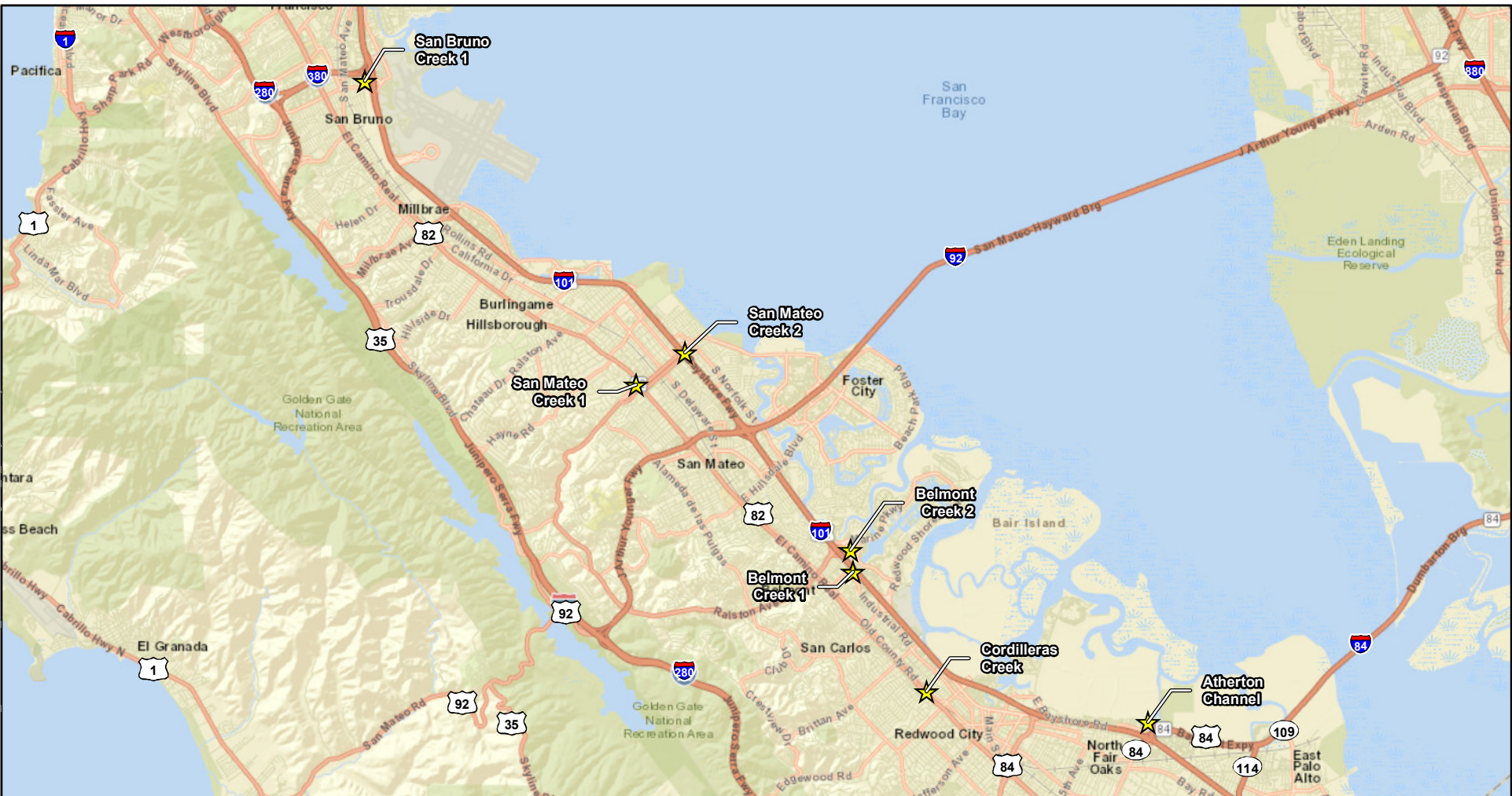


\\mesq-montrose-env.com\shares\094-Oakland\094-GIS\PROJECTS\2020_OneShoreline_RMP\mxd\CEQA\Figure_1_ProjectVicinity.mxd RH 11/28/2023



Source: ESRI 2023

★ Maintenance Sites

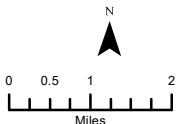
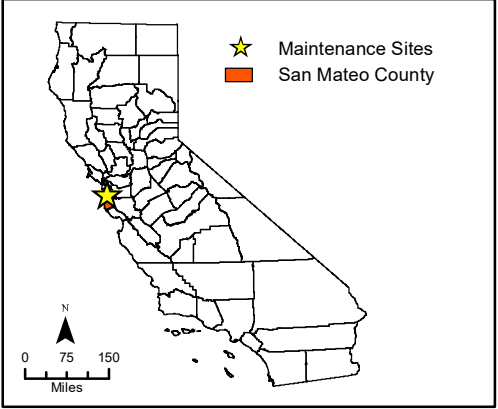
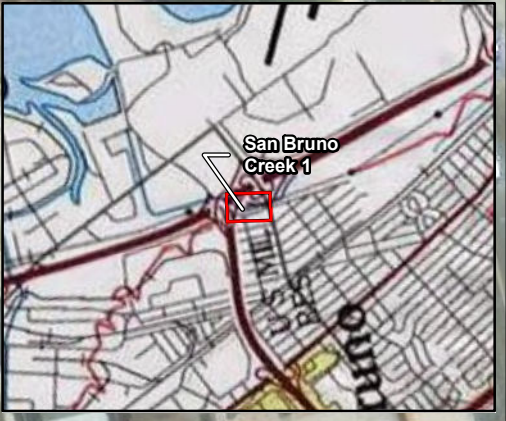


Figure 1
Project Vicinity

★ Maintenance Sites
San Mateo County



San Mateo County Flood and Sea Level Rise Resiliency District
Bayside Creeks Routine Maintenance Project



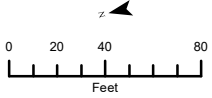
 Maintenance Areas

Figure 2
Project Locations
San Bruno Creek at 7th Avenue

Sheet 1 of 7

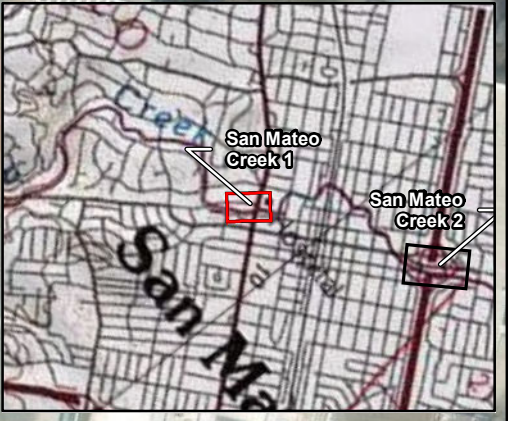


San Mateo County Flood and Sea Level Rise Resiliency District
 Bayside Creeks Routine Maintenance Project



T:\PROJECTS\23020_OneShoreline_RMP\mxd\CEQA\Figure 2_ProjectLocations.v2.mxd RH 3/29/2024

Source: ESRI 2023



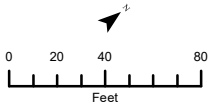
 Maintenance Areas

Figure 2
Project Locations
San Mateo Creek at Arroyo Court

Sheet 2 of 7

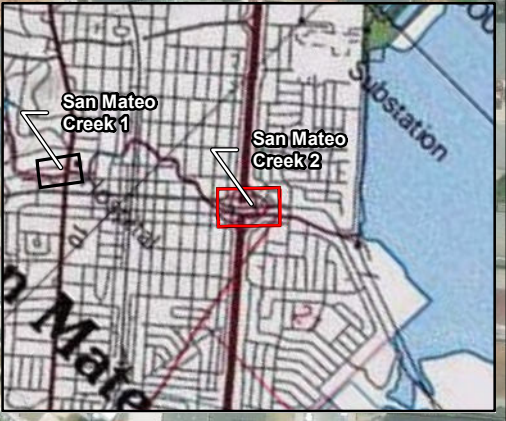
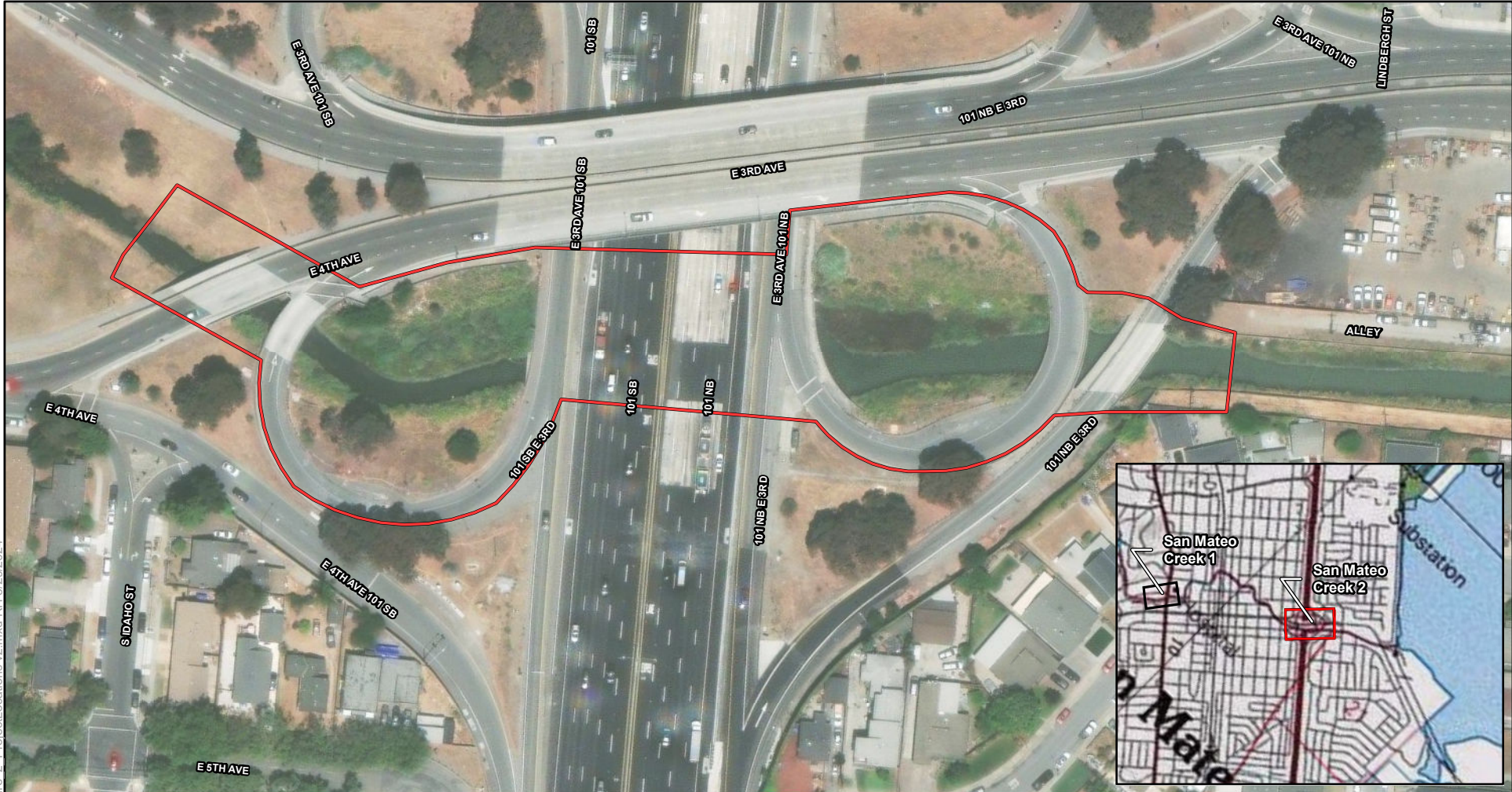


San Mateo County Flood and Sea Level Rise Resiliency District
 Bayside Creeks Routine Maintenance Project



T:\PROJECTS\23020_OneShoreline_RMP\mxd\CEQA\Figure 2_ProjectLocations v2.mxd RH 3/29/2024

Source: ESRI 2023



 Maintenance Areas

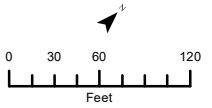
Figure 2
Project Locations
San Mateo Creek at Highway 101

Sheet 3 of 7

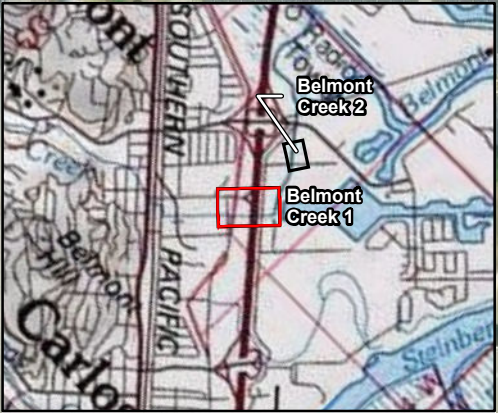


TA PROJECTS\23020_OneShoreline_RMP\mxd\CEOA\Figure 2 - ProjectLocations v2.mxd RH 3/29/2024

Source: ESRI 2023



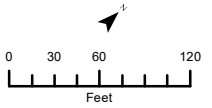
San Mateo County Flood and Sea Level Rise Resiliency District
 Bayside Creeks Routine Maintenance Project



 Maintenance Areas

Figure 2
Project Locations
Belmont Creek at Highway 101

Sheet 4 of 7



San Mateo County Flood and Sea Level Rise Resiliency District
 Bayside Creeks Routine Maintenance Project

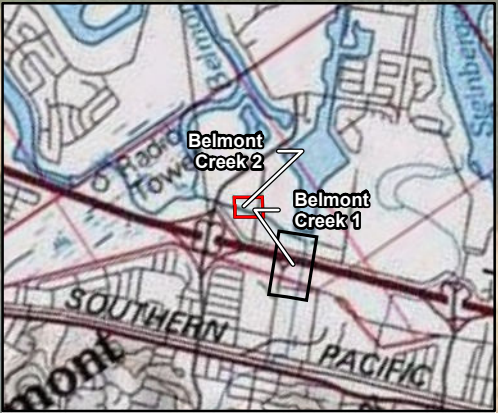


Source: ESRI 2023

TA PROJECTS\23020_OneShoreline_RMP\mxd\CEQA\Figure 2_ProjectLocations v2.mxd RH 3/29/2024



Source: ESRI 2023



 Maintenance Areas

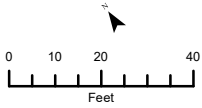
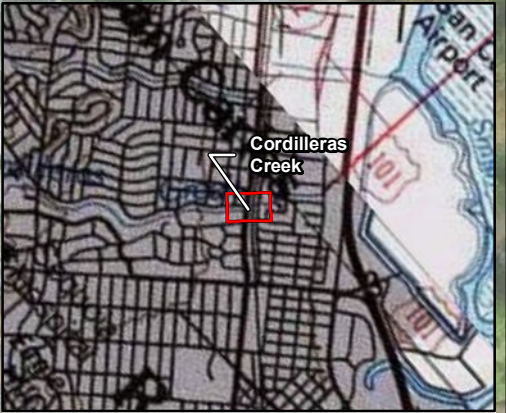
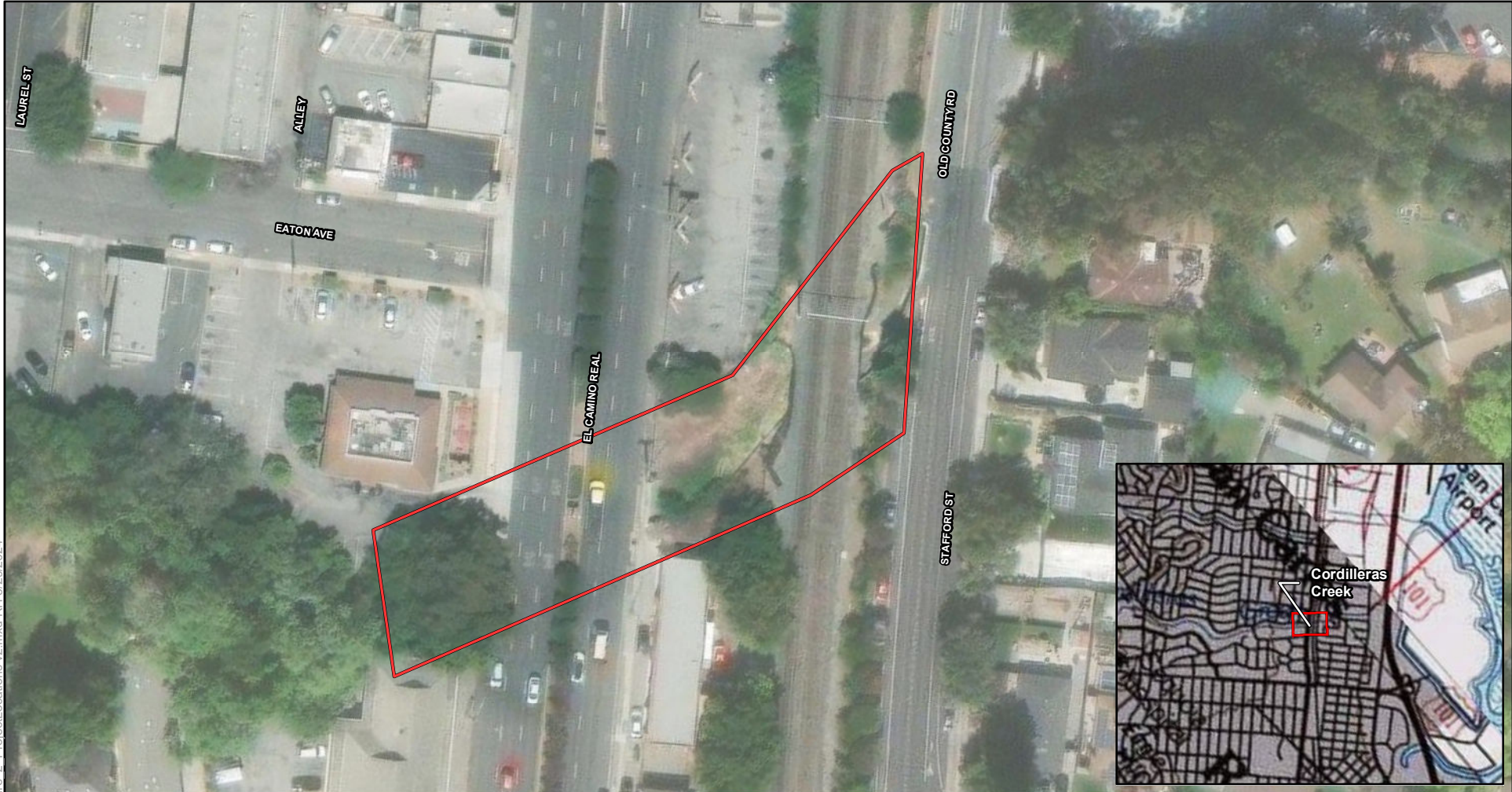


Figure 2
Project Locations
Belmont Creek at Sem Lane

Sheet 5 of 7

San Mateo County Flood and Sea Level Rise Resiliency District
Bayside Creeks Routine Maintenance Project





Source: ESRI 2023


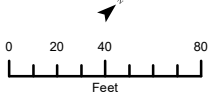
 Maintenance Areas

Figure 2
Project Locations
Cordilleras Creek at El Camino Real

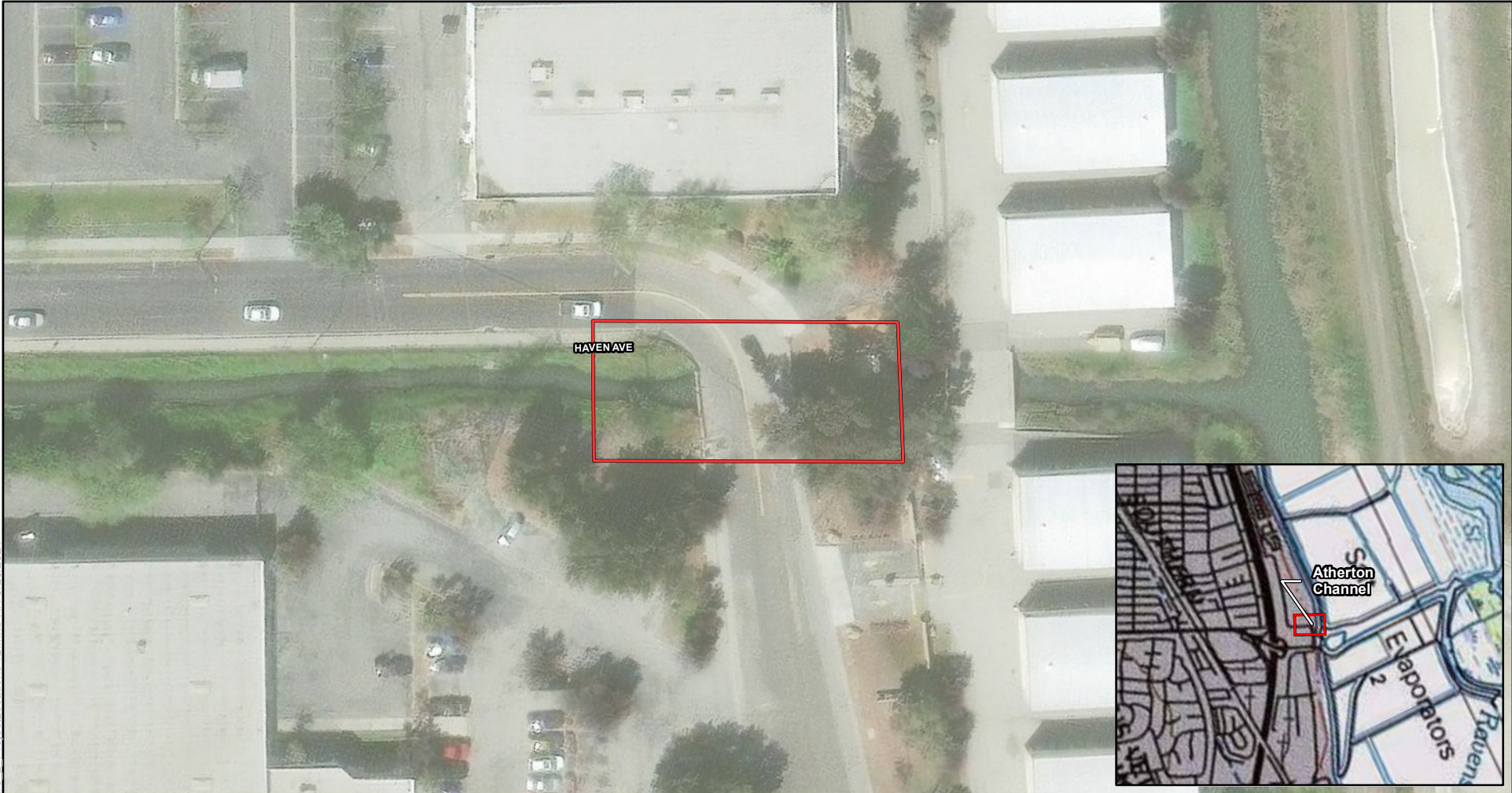
Sheet 6 of 7



San Mateo County Flood and Sea Level Rise Resiliency District
 Bayside Creeks Routine Maintenance Project



T:\PROJECTS\23020_OneShoreline_RMP\mxd\CEQA\Figure 2_ProjectLocations v2.mxd RH 3/29/2024

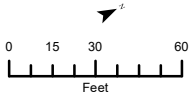


Source: ESRI 2023

 Maintenance Areas

Figure 2
Project Locations
Atherton Channel at Haven Avenue

Sheet 7 of 7



San Mateo County Flood and Sea Level Rise Resiliency District
 Bayside Creeks Routine Maintenance Project



T:\PROJECTS\23020_OneShoreline_RMP\mxd\CEQA\Figure 2_ProjectLocations.v2.mxd RH 3/29/2024