

**Subject:** Noise Analysis – CCL05575 CANC-STHEL01

**Site:** CCL05575 CANC-STHEL01  
**6941 7<sup>th</sup> St**  
**Rio Linda, CA 95673**

To whom it may concern,

Tower Engineering Professionals (TEP) has analyzed the expected change in noise at this site. Based on the information collected, TEP has calculated there will be an increase in noise.

On a site visit, we measured the baseline readings with a noise meter for typical (ambient) noise which came out to be 62.5 dB at location 1, 55.6 dB at location 2, and 69.0 dB at location 3. We performed noise calculations based on proposed equipment being added to the site, their standard noise levels, and their position relative to the noise measure test location.

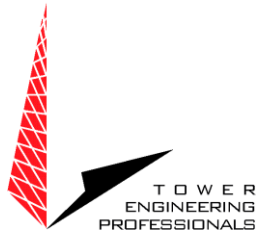
Proposed equipment to be added:

- (1) 3-Bay Walk-Up-Cabinet (WUC) – 65.0 dB at 1ft

The total noise is shown in the table below:

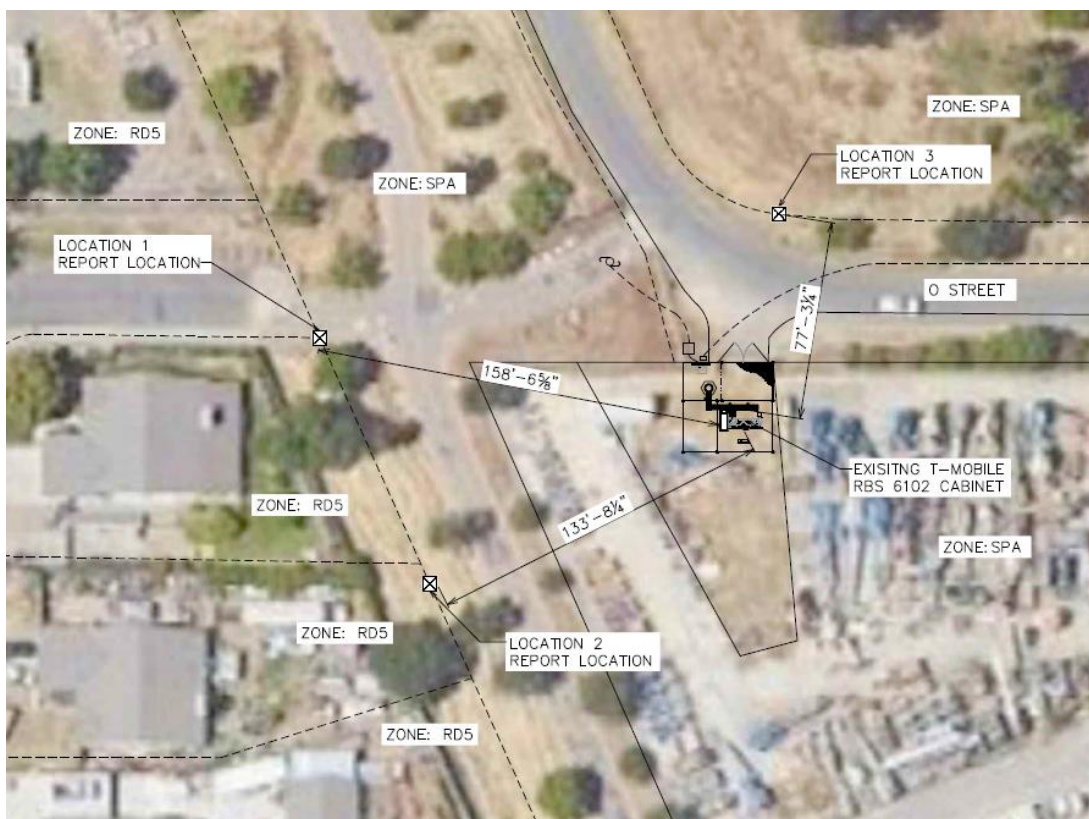
Exterior Noise Limit: 0 dB per 30 min/hour (per Section 6.68.070.b of the Sacramento County Noise Ordinance)					
Location 1		Location 2		Location 3	
Baseline	W/ Prop Equip	Baseline	W/ Prop Equip	Baseline	W/ Prop Equip
62.5 dB	62.5 dB	55.6 dB	55.6 dB	69.0 dB	69.0 dB

As shown in the table, the typical noise did not increase at location 1, 2, or 3 with the addition of the proposed equipment with calculations of 62.5 dB at Location 1, 55.6 dB at Location 2, and 69.0 dB at Location 3.



The surrounding property uses are Special Planning Area and Residential Land, with Location 1 at approx. 158'-6" (48.3m) to the east of the compound, Location 2 approx. 113'-8" (34.6) from the northeast of the compound, and Location 3 at approx. 77'-3" (23.5m) to the northwest of the compound.

Noise levels at all locations will be within the specified noise allowance that Section 6.68.070.b of the Sacramento County Noise Ordinance notes for SPA zoning types (+0dB per 30 min/hour.)



Sincerely,

**Tower Engineering Professionals, Inc. (TEP)**

Mark Quakenbush, PE

Division Manager – Electrical Engineering

[mquakenbush@tepgroup.net](mailto:mquakenbush@tepgroup.net)

(919) 703-4135

CA License #23287