

APPENDIX D

CULTURAL RESOURCES ASSESSMENT



Rincon Consultants, Inc.

250 East 1st Street, Suite 1400
Los Angeles, California 90012

213 788 4842

info@rinconconsultants.com
www.rinconconsultants.com

December 23, 2022

Rincon Project No: 21-12086

Jessie Fan, ENV SP

Kimley-Horn

660 South Figueroa Street, Suite 2050

Los Angeles, California 90017

Via email: Jessie.Fan@kimley-horn.com

Subject: Cultural Resources Assessment for the SCAG REAP Project 2-B – Palmdale Housing Project in the City of Palmdale, County of Los Angeles, California

Dear Ms. Fan:

This letter report presents the findings of a cultural resources assessment (CRA) completed in support of the Southern California Association of Governments (SCAG) Regional Early Action Planning (REAP) Project 2-B Palmdale Housing Project located within the City of Palmdale, Los Angeles County, California. Kimley-Horn retained Rincon Consultants, Inc. to support the proposed project's compliance with the California Environmental Quality Act (CEQA), with the City of Palmdale as the lead agency. This assessment documents the results of the tasks performed by Rincon, specifically a cultural resources records search, archival and background research, a Sacred Lands File (SLF) search conducted by the Native American Heritage Commission (NAHC), a Phase I pedestrian survey, and a letter report summarizing the CRA. All work was completed in accordance with CEQA and applicable local regulations, including the City of Palmdale.

Project Description

The Project proposes to develop a community of mixed housing types serving a range of income levels. The proposed Project includes 330 dwelling units (du) composed of 152 affordable walkup apartments, 84 market rate apartments, 60 townhomes, and 34 cottages.

Project Location

The proposed Project site is in the city of Palmdale (City), approximately 35 miles north of downtown Los Angeles in the high desert area of northeast Los Angeles County (County). Figure 1 depicts the proposed Project site in a regional context.

The approximately 14.32-acre proposed Project site consists of five parcels, numbered Parcels 1 through 5, that will be consolidated from 45 smaller parcels located between 25th Street East, East Avenue R 8, 29th Street East, and East Avenue R12 in south Palmdale. The Assessor's Parcel Numbers (APNs) for the 45 parcels are shown in Table 1. The proposed Project site encompasses portions of Section 6 of Township 5 North, Range 11 West, Section 1 of Township 5 North, Range 12 West, and Sections 31 and 32 of Township 6 North, Range 11 West on the Palmdale, California United States Geological Survey (USGS) 7.5-minute topographic quadrangle (Figure 2).



Table 1 Proposed Project Parcels

Project Parcel	Acreage	Current Parcel APN
Parcel 1	2.89	3019-012-902, 3019-012-903, 3019-012-904, 3019-012-905, 3019-012-9026, 3019-012-907, 3019-012-908, 3019-012-909, 3019-012-910, 3019-012-911, 3019-012-912
Parcel 2	3.66	3019-011-917, 3019-011-919, 3019-011-906, 3019-011-908, 3019-011-902, 3019-011-903, 3019-011-909, 3019-011-920, 3019-011-905, 3019-011-918, 3019-011-901, 3019-011-907, 3019-011-900
Parcel 3	3.04	3019-010-906, 3019-010-907, 3019-010-908, 3019-010-909, 3019-010-910, 3019-010-911, 3019-010-903, 3019-010-912, 3019-010-904, 3019-010-905, 3019-010-913
Parcel 4	2.78	3019-009-900
Parcel 5	1.95	3019-011-911, 3019-011-912, 3019-011-915, 3019-011-916, 3019-011-910, 3019-011-904, 3019-011-913, 3019-011-914

Source: LeSar Development Consultants, Master Plan Document, July 10, 2023; Los Angeles County Office of the Assessor, <<https://maps.assessor.lacounty.gov/m/>> (accessed May 24, 2023).

Surrounding land uses include multi-family residential development to the north and east, East Avenue R-12 to the south, and open space to the west. The Project site is also bisected by 27th Street East in its western portion. A fenced in recreational vehicle (RV) or trailer home was observed along the southwest edge of the Project site, off site but within the survey area.

Methods

Background and Archival Research

Rincon completed background and archival research in support of this CRA in September 2022. A variety of primary and secondary source materials were consulted. Sources included, but were not limited to, historical maps, aerial photographs, and written histories of the area. The following sources were utilized to develop an understanding of the project site and its context:

- Historical aerial photographs accessed via NETR Online
- Historical USGS topographic maps

California Historical Resources Information System Records Search

On October 12, 2022 Rincon received California Historical Resources Information System (CHRIS) records search results from the South Central Coastal Information Center (SCCIC) (Attachment 2). The SCCIC is the official state repository for cultural resources records and reports for the county in which the proposed project is located. The purpose of the records search was to identify previously recorded cultural resources, as well as previously conducted cultural resources studies within the project site and a 0.5-mile radius surrounding it. Rincon also reviewed the National Register of Historic Places (NRHP), the California Register of Historical Resources (CRHR), the California Historical Landmarks list, the Built Environment Resources Directory, and the Archaeological Determination of Eligibility (ADOE) list.



Sacred Lands File Search

Rincon contacted the NAHC on September 9, 2022, to request a search of the SLF, as well as an Assembly Bill (AB) 52-specific contact list of Native Americans culturally affiliated with the project site vicinity (Attachment 3).

Field Survey

Rincon Archaeologist Andrea Ogaz, MA, Registered Professional Archaeologist (RPA) conducted a pedestrian survey of the project site on October 21, 2022, using transect intervals spaced less than 15 meters (50 feet) apart. All exposed ground surfaces were examined for artifacts (e.g., flaked stone tools, tool-making debris, stone milling tools, ceramics, fire-affected rock), ecofacts (marine shell and bone), soil discoloration that might indicate the presence of a cultural midden, soil depressions, and features indicative of the former presence of structures or buildings (e.g., standing exterior walls, postholes, foundations) or historical debris (e.g., metal, glass, ceramics). Ground disturbances such as burrows and drainages were also visually inspected. Survey accuracy was maintained using a handheld tablet with a submeter-accurate Global Positioning System unit and a georeferenced map of the project site. Site characteristics and survey conditions were documented using field records and a digital camera. Copies of the survey notes and digital photographs are maintained at our Rincon Los Angeles office.

Findings

Known Cultural Resources Studies

The CHRIS records search identified nine cultural resources studies within 0.5 mile of the project site (Attachment 3, Table 2). Of these nine studies, none include any portion of the project site or areas directly adjacent to the project site.

Table 2 Known Cultural Resource Studies within 0.5 mile of the Project Site

Report Number	Author(s)	Year	Title
LA-01486	Drover, Christopher E.	1985	Environmental Evaluation & Archaeological Assessment of the Joshua Hills Specific Plan, Palmdale, Los Angeles County
LA-02253	Salls, Roy A.	1991	Report of Archaeological/paleontological Reconnaissance Survey of: Five Acre Site SW Corner 30 th St. and E Ave. R-4 City of Palmdale, California
LA-07843	Bonner, Wayne H. and Christeen Taniguchi	2004	Records Search Results and Site Visit for Spring Telecommunications Facility Candidate La60xc556d (jiffy Lube/Hollywood Video) Vacant Lot Near 2540 Avenue S, Palmdale, Los Angeles County, California
LA-07975	Goodwin, Riordan L. and Robert E. Reynolds	2002	Cultural and Paleontological Resource Mitigation, Avenue S Widening, City of Palmdale, Los Angeles County, California
LA-09011	Nixon, Rachel A. and C. Dennis Taylor	2005	Cultural Resources Ground Disturbance Monitoring of Avenue S Corridor Improvement Project, City of Palmdale, Los Angeles County, California



Report Number	Author(s)	Year	Title
LA-09159	Bonner, Wayne H.	2007	Cultural Resources Record Search and Site Visit Results for T-Mobile Candidate SV11384A (Desert Rose Elementary), 37730 27 th Street East, Palmdale, Los Angeles County, California
LA-09679	Loftus, Shannon L. and Robin D. Turner	2008	Cultural Resource and Paleontological Assessment, North Los Angeles/Kern County, Regional Recycled Water Master Plan, Los Angeles/East Kern Counties, California
LA-11135	Tang, Bai “Tom” and Michael Hogan	2011	Historical/Archaeological Resources Survey Report, City of Palmdale Recycled Water Master Plan Supplement, Los Angeles County, California

Source: SCCIC 2022

Known Cultural Resources

The CHRIS records search and background research identified no previously recorded cultural resources within the project site or a 0.5-mile radius surrounding it.

Aerial Imagery and Historical Topographic Maps Review

Rincon completed a review of historical topographic maps and aerial imagery to ascertain the development history of the project site. Historical topographic maps from 1915 and 1917 depict the project site as undeveloped land (USGS 2022). Aerial imagery from 1948 first depicts 27th Street E bisecting the project site as well as an unpaved road or path extending from 27th Street E northwest through the project site (NETR Online 2022). A historical topographic map from 1958 depicts the project site as undeveloped as well as the first depiction of a paved road at East Ave R 8 to the north of the project site and an unpaved road at East Avenue R 12 (NETR Online 2022). Imagery from 1974 to 1987 show residential development, including extant residential neighborhoods, to the north, east, and south. The project area continues to be undeveloped through the writing of this report (NETR Online 2022).

Sacred Land File Search

On November 9, 2022, the NAHC responded to Rincon’s AB 52 and SLF request, stating that the results of the SLF search were negative. See Attachment 3 for the NAHC response, including Tribal contacts list. AB 52 consultation was conducted between the City of Palmdale.

Survey Results

Ms. Ogaz conducted a pedestrian survey of the project site. The topography of the project site was generally flat. Ground surfaces were partially covered by annual grasses and shrubs resulting in good to complete (60 to 100 percent) ground surface visibility (Attachment 2, Figure 3 and Figure 4). Several unpaved roads were observed throughout the project site (Attachment 2, Figure 5 and Figure 6). Additionally, modern refuse dumping was observed throughout the project site. The survey resulted in the identification of two historic-period archaeological resources described in detail below. A map depicting the two identified archaeological resources can be found in Attachment 2, Figure 7 at the end of this report.. No prehistoric archaeological resources were identified within the project site.

Archaeological Resources Descriptions and Interpretations

Palmdale-Site-AO-01

Palmdale-Site-AO-01 is a diffuse historic-period refuse scatter with two loci (Attachment 2, Figure 8). The loci are situated around an unpaved, unmaintained road trending east to west. Locus 1 contains 10 cans including three complete knife-cut solder dot evaporated milk cans. Locus 2 consists of nine bottle bases, three crushed sanitary cans, and one rectangular standing meat can. Diagnostic artifacts include solder dot milk cans and bottle bases with makers marks (Attachment 2, Figure 9). Solder dot evaporated milk cans were manufactured between 1930 to 1975 (Memcott 2015). Owens Illinois makers marks were observed on two of the bottles and could be dated from 1929 to 1960 (Toulouse 1971). A sample of additional makers markers on bottle bases include the “LM” monogram, manufactured by Latchford-Marble Glass Co. from 1939 to 1957 and the “MG” monogram, manufactured by Maywood Glass Co. from 1930 to 1959 (Lockhart et al 2021 b and c). The sample of makers marks indicate that the resource is dated between 1929 and 1975. The entire resource measures 344 feet (ft) from north to south by 58 ft from east to west.

Palmdale-Site-AO-02

Palmdale-Site-AO-02 is a large, diffuse historic-period refuse scatter with three loci (Attachment 2, Figure 10). The loci are situated around an unpaved road trending east to west. Locus 1 contains: concrete fragments, 10 whiteware fragment, approximately 30 clear glass fragments, two aqua glass fragments, 10 amber glass fragments, one diagnostic bottle base, one crushed paint can, and one knife opened solder dot milk can. Locus 2 contains approximately 100 clear glass fragments, approximately 50 amber glass fragments, approximately 10 whiteware fragments, approximately 60 crushed cans, 10 fragments of ceramic pipe, concrete fragments, four milk glass fragments, at least one diagnostic bottle base and one diagnostic meat tin. Locus 3 contains approximately 200 crushed cans, approximately 100 clear glass fragments, approximately 50 amber glass fragments, two fragments of aqua glass and two fragments of milk glass (Attachment 2, Figure 11). Diagnostic artifacts include solder dot milk cans and bottle bases with makers marks. The solder dot evaporated milk cans were embossed with three rings, indicating they were manufactured between 1930 to 1975 (Memcott 2015). A sample of observed makers marks on bottle bases include the “AHK” monogram, manufactured by Kerr Glass Mfg. Co. between circa 1969 to 1996 and the “L” in a circle monogram, manufactured by Latchford Glass Co. between 1957-1989 (Lockhart et al. 2021 a and b). The sample of makers marks indicate that the resource is dated between 1930 to 1989. The resource measures 88 feet north to south by 178 feet east to west.

Evaluation

Based on the similarities in the assemblages from Palmdale-Site-AO-01 and Palmdale-Site-AO-02, the resources are likely contemporary and may have originated from the same source. Thus, Rincon has combined the evaluation effort for both resources below. This cultural resources assessment identified two historic period refuse scatters within the project site. No evidence is present that the resources are associated with events that have made a significant contribution to the broad patterns of California’s history and cultural heritage (does not meet Criterion 1) or that it is associated with the lives of persons important in our past (does not meet Criterion 2). The resource does not embody any distinctive characteristics (does not meet Criterion 3). Twentieth century refuse scatters are ubiquitous throughout



the undeveloped desert areas throughout Los Angeles County. The research potential at these resources have been exhausted by its recordation, and few meaningful conclusions can be drawn from further study (does not meet Criterion 4). Thus, Rincon recommends the resources ineligible for the CRHR and local designation.

Conclusions and Recommendations

The impact analysis included here is organized based on the cultural resources thresholds included in CEQA Guidelines Appendix G: Environmental Checklist Form:

- a. Would the project cause a substantial adverse change in the significance of a historical resource pursuant to Section 15064.5?
- b. Would the project cause a substantial adverse change in the significance of an archaeological resource pursuant to Section 15064.5?
- c. Would the project disturb any human remains, including those interred outside of dedicated cemeteries?

Threshold A broadly refers to historical resources. To more clearly differentiate between archaeological and built environment resources, the analysis under Threshold A is limited to built environment resources. Archaeological resources, including those that may be considered historical resources pursuant to Section 15064.5 and those that may be considered unique archaeological resources pursuant to Section 21083.2, are considered under Threshold B.

Historical Built Environment Resources

The records search, background research, and field survey did not identify any historical built environment resources within the project site. Therefore, the project would not result in a substantial adverse change to the significance of a historical resource. As such, implementation of the project would result in ***no impact to historical resources*** pursuant to CEQA.

Historical and Unique Archaeological Resources

The two historic-period archaeological resources were evaluated and do not meet the minimum criteria to be considered eligible for listing on the CRHR. Due to the discovery of surficial historic-period archaeological materials, there is the potential, however low, for encountering intact subsurface archaeological deposits.

Rincon recommends the following mitigation measure for addressing unanticipated discoveries. With adherence to the mitigation measures described below, Rincon recommends a finding of ***less than significant impact to archaeological resources with mitigation incorporated*** under CEQA. The project would also be required to adhere to existing regulations regarding the unanticipated discovery of human remains, as detailed below.

Unanticipated Discovery of Cultural Resources

In the event that archaeological resources are unexpectedly encountered during ground disturbing activities, work within 50 feet of the find shall halt and an archaeologist meeting the Secretary of the Interior's Professional Qualifications Standards for archaeology (National Park service 1983) shall be



contacted immediately to evaluate the resource. If the resource is determined by the qualified archaeologist to be prehistoric, then a Native American representative shall also be contacted to participate in the evaluation of the resource. If the qualified archaeologist and/or Native American representative determines it to be appropriate archaeological testing for CRHR eligibility shall be completed. If the resource proves to be eligible for the CRHR and significant impacts to the resource cannot be avoided via project redesign, a qualified archaeologist shall prepare a data recovery plan tailored to the physical nature and characteristics of the resource, per the requirements of CCR Guidelines Section 15126.4(b)(3)(C). The data recovery plan shall identify data recovery excavation methods, measurable objectives, and data thresholds to reduce any significant impacts to cultural resources related to the resource. Pursuant to the data recovery plan, the qualified archaeologist and Native American representative, as appropriate, shall recovery and document the scientifically consequential information that justifies the resource’s significance. The City shall review and approve the treatment plan and archaeologist testing as appropriate, and the resulting documentation shall be submitted to the regional repository of the California Historical Resources Information System, per CCR Guidelines Section 15126.4(b)(3)(C).

Human Remains

No human remains are known to be present within the project site. However, the discovery of human remains is always a possibility during ground disturbing activities. If human remains are found, the State of California Health and Safety Code Section 7050.5 states that no further disturbance shall occur until the County Coroner has made a determination of origin and disposition pursuant to Public Resources Code Section 5097.98. In the event of an unanticipated discovery of human remains, the County Coroner must be notified immediately. If the human remains are determined to be of Native American origin, the Coroner will notify the Native American Heritage Commission, which will determine and notify a most likely descendant (MLD). The MLD has 48 hours from being granted site access to make recommendations for the disposition of the remains. If the MLD does not make recommendations within 48 hours, the landowner shall reinter the remains in an area of the property secure from subsequent disturbance. With adherence to existing regulations, Rincon recommends a finding of ***less than significant impact to human remains under CEQA.***

Should you have any questions concerning this CRA, please do not hesitate to contact the undersigned at (805) 762-4064 or dmerrick@rinconconsultants.com.

Sincerely,

Rincon Consultants, Inc.

Lucas Nichols, BA
Archaeologist

Dustin Merrick, MA, RPA
Project Manager/Archaeologist

Christopher A. Duran, MA, RPA
Principal/Senior Archeologist



Attachments

- Attachment 1 Figures
- Attachment 2 **Confidential – Not for Public Distribution** - Pedestrian Survey Photographs
- Attachment 3 South Central Coast Information Center Records Search Results
- Attachment 4 Sacred Lands File Search Results / AB 52 Contact List
- Attachment 5 **Confidential – Not for Public Distribution** - Department of Parks and Recreation 523 Forms



References

Lockhart, Bill, Bill Lindsey, Carol Serr, Pete Schulz, and Beau Schriever

- 2021a "Manufacturer's Marks and Other Logos on Glass Containers." Compiled by the Bottle Research Group. <https://sha.org/bottle/pdf/ALogoTable.pdf>
- 2021b "Manufacturer's Marks and Other Logos on Glass Containers." Compiled by the Bottle Research Group. <https://sha.org/bottle/pdf/LLogoTable.pdf>
- 2021c "Manufacturer's Marks and Other Logos on Glass Containers." Compiled by the Bottle Research Group. <https://sha.org/bottle/pdf/MLogoTable.pdf>

Memcott, Margo

- 2015 What Can This Be? A Practical Workshop on Tin Can Identification and Analysis. Nevada Archaeological Association 44th Annual Meeting. Wendover, Nevada. March 27, 2015.

National Park Service

- 1983 "Archaeology and Historic Preservation: Secretary of the Interior's Standards and Guidelines." Washington, DC. https://www.nps.gov/history/local-law/arch_stnds_0.htm (accessed August 23, 2022).

NETR Online

- 2022 "Historic Aerials," [online historical aerial photograph viewer]. www.historicaerials.com (accessed December 2022).

Toulouse, Julian Harrison

- 1971 Bottle Makers and Their Marks. Thomas Nelson, New York

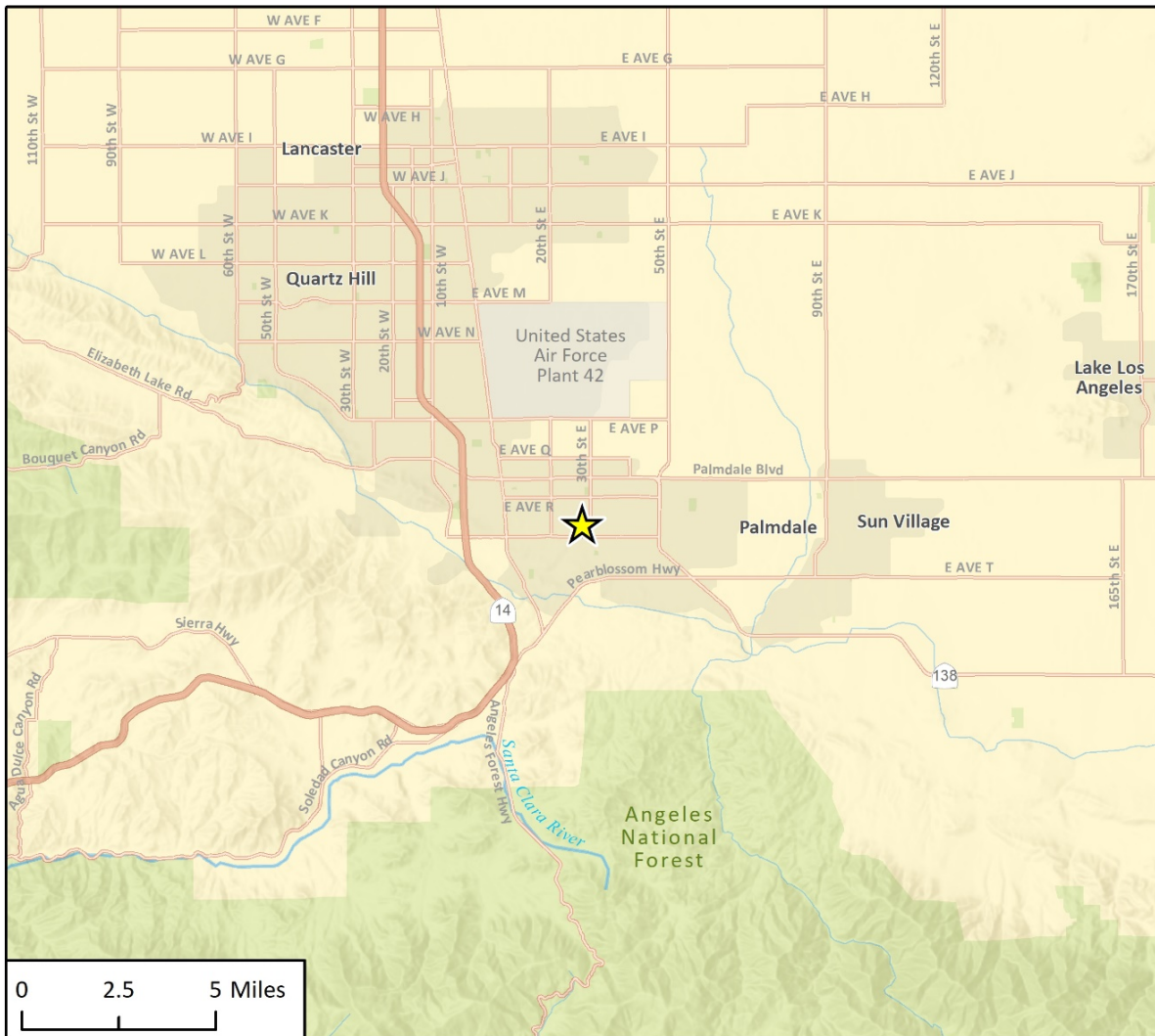
United States Geological Survey (USGS)

- 2021 Historical Topographic Map Explorer. [online map database]. www.historicalmaps.arcgis.com/usgs/ (accessed December 2022).

Attachment 1

Figures

Figure 1 Regional Location Map



Basemap provided by Esri and its licensors © 2022.

Project Location



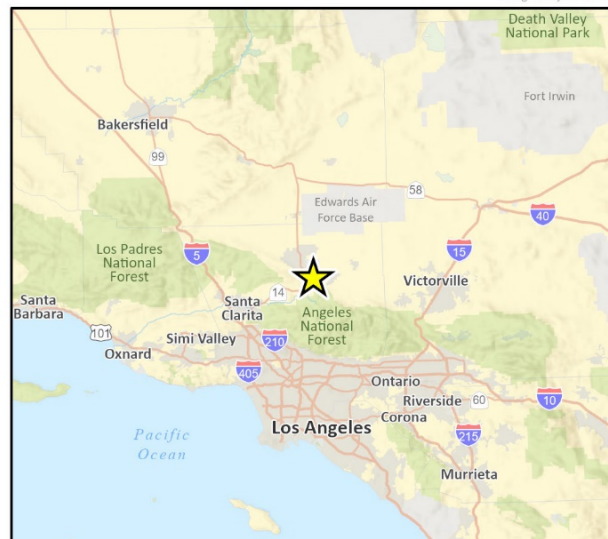
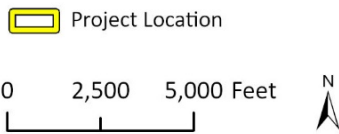
Fig 1 Regional Location

Figure 2 Project Location Map



Basemap provided by National Geographic Society, Esri and their licensors © 2022. Palmdale Quadrangle, T06N R11W S31. The topographic representation depicted in this map may not portray all of the features currently found in the vicinity today and/or features depicted in this map may have changed since the original topographic map was assembled.

CR RS and Proj Locn Figures
CRFig 1 Proj Locn Map



Attachment 2

Confidential – Not for Public Distribution

Pedestrian Survey Photographs and Cultural Resources Location Map

Attachment 3

South Central Coast Information Center Records Search Results

CHRIS Data Request Form

ACCESS AND USE AGREEMENT NO.: 56.00 IC FILE NO.: _____

To: South Central Coastal Information Center

Print Name: Andrew Rodriguez Date: 09/29/2022

Affiliation: Rincon Consultants, Inc.

Address: 180 N. Ashwood Avenue

City: Ventura State: CA Zip: 93003

Phone: (805) 644-4455 Fax: (805) 644-4455 Email: adominguez@rinconconsultants.com

Billing Address (if different than above): _____

Billing Email: ap@rinconconsultants.com Billing Phone: (805) 644-4455

Project Name / Reference: SCAG REAP Project 2-B - Palmdale Housing Project

Project Street Address: City of Palmdale

County or Counties: Los Angeles

Township/Range/UTMs: 06N/11W/Sec 31

USGS 7.5' Quad(s): Palmdale

PRIORITY RESPONSE (Additional Fee): yes / no

TOTAL FEE NOT TO EXCEED: \$ 600.00

(If blank, the Information Center will contact you if the fee is expected to exceed \$1,000.00)

Special Instructions:

Records search request for a 13-acre undeveloped section of Palmdale, Los Angeles, with .5 mile buffer.

Information Center Use Only

Date of CHRIS Data Provided for this Request: _____

Confidential Data Included in Response: yes / no

Notes: _____

CHRIS Data Request Form

Mark the request form as needed. Attach a PDF of your project area (with the radius if applicable) mapped on a 7.5' USGS topographic quadrangle to scale 1:24000 ratio 1:1 neither enlarged nor reduced and include a shapefile of your project area, if available. Shapefiles are the current CHRIS standard for submitting digital spatial data for your project area or radius. **Check with the appropriate IC for current availability of digital data products.**

- Documents will be provided in PDF format. Paper copies will only be provided if PDFs are not available at the time of the request or under specially arranged circumstances.
- Location information will be provided as a digital map product (Custom Maps or GIS data) unless the area has not yet been digitized. In such circumstances, the IC may provide hand drawn maps.
- In addition to the \$150/hr. staff time fee, client will be charged the Custom Map fee when GIS is required to complete the request [e.g., a map printout or map image/PDF is requested and no GIS Data is requested, or an electronic product is requested (derived from GIS data) but no mapping is requested].

For product fees, see the CHRIS IC Fee Structure on the [OHP website](#).

1. Map Format Choice:

Select One: Custom GIS Maps GIS Data Custom GIS Maps and GIS Data No Maps

Any selection below left unmarked will be considered a "no."

<p>Location Information:</p> <p>ARCHAEOLOGICAL Resource Locations¹ NON-ARCHAEOLOGICAL Resource Locations Report Locations¹ "Other"² Report Locations²</p>	<p>Within project area</p> <table border="0"> <tr><td>yes</td><td><input type="checkbox"/></td><td>/</td><td>no</td><td><input type="checkbox"/></td></tr> <tr><td>yes</td><td><input type="checkbox"/></td><td>/</td><td>no</td><td><input type="checkbox"/></td></tr> <tr><td>yes</td><td><input type="checkbox"/></td><td>/</td><td>no</td><td><input type="checkbox"/></td></tr> <tr><td>yes</td><td><input type="checkbox"/></td><td>/</td><td>no</td><td><input type="checkbox"/></td></tr> </table> <p>Within <u>.5</u> mi. radius</p> <table border="0"> <tr><td>yes</td><td><input type="checkbox"/></td><td>/</td><td>no</td><td><input type="checkbox"/></td></tr> <tr><td>yes</td><td><input type="checkbox"/></td><td>/</td><td>no</td><td><input type="checkbox"/></td></tr> <tr><td>yes</td><td><input type="checkbox"/></td><td>/</td><td>no</td><td><input type="checkbox"/></td></tr> <tr><td>yes</td><td><input type="checkbox"/></td><td>/</td><td>no</td><td><input type="checkbox"/></td></tr> </table>	yes	<input type="checkbox"/>	/	no	<input type="checkbox"/>	yes	<input type="checkbox"/>	/	no	<input type="checkbox"/>	yes	<input type="checkbox"/>	/	no	<input type="checkbox"/>	yes	<input type="checkbox"/>	/	no	<input type="checkbox"/>	yes	<input type="checkbox"/>	/	no	<input type="checkbox"/>	yes	<input type="checkbox"/>	/	no	<input type="checkbox"/>	yes	<input type="checkbox"/>	/	no	<input type="checkbox"/>	yes	<input type="checkbox"/>	/	no	<input type="checkbox"/>
yes	<input type="checkbox"/>	/	no	<input type="checkbox"/>																																					
yes	<input type="checkbox"/>	/	no	<input type="checkbox"/>																																					
yes	<input type="checkbox"/>	/	no	<input type="checkbox"/>																																					
yes	<input type="checkbox"/>	/	no	<input type="checkbox"/>																																					
yes	<input type="checkbox"/>	/	no	<input type="checkbox"/>																																					
yes	<input type="checkbox"/>	/	no	<input type="checkbox"/>																																					
yes	<input type="checkbox"/>	/	no	<input type="checkbox"/>																																					
yes	<input type="checkbox"/>	/	no	<input type="checkbox"/>																																					

3. Database Information:
 (contact the IC for product examples, or visit the [SSWVIC website](#) for examples)

<p>ARCHAEOLOGICAL Resource Database¹ List (PDF format) Detail (PDF format) Excel Spreadsheet</p> <p>NON-ARCHAEOLOGICAL Resource Database List (PDF format) Detail (PDF format) Excel Spreadsheet Report Database¹ List (PDF format) Detail (PDF format) Excel Spreadsheet Include "Other"² Reports²</p>	<p>Within project area</p> <table border="0"> <tr><td>yes</td><td><input type="checkbox"/></td><td>/</td><td>no</td><td><input type="checkbox"/></td></tr> <tr><td>yes</td><td><input type="checkbox"/></td><td>/</td><td>no</td><td><input type="checkbox"/></td></tr> <tr><td>yes</td><td><input type="checkbox"/></td><td>/</td><td>no</td><td><input type="checkbox"/></td></tr> </table> <p>Within <u>.5</u> mi. radius</p> <table border="0"> <tr><td>yes</td><td><input type="checkbox"/></td><td>/</td><td>no</td><td><input type="checkbox"/></td></tr> <tr><td>yes</td><td><input type="checkbox"/></td><td>/</td><td>no</td><td><input type="checkbox"/></td></tr> <tr><td>yes</td><td><input type="checkbox"/></td><td>/</td><td>no</td><td><input type="checkbox"/></td></tr> </table>	yes	<input type="checkbox"/>	/	no	<input type="checkbox"/>	yes	<input type="checkbox"/>	/	no	<input type="checkbox"/>	yes	<input type="checkbox"/>	/	no	<input type="checkbox"/>	yes	<input type="checkbox"/>	/	no	<input type="checkbox"/>	yes	<input type="checkbox"/>	/	no	<input type="checkbox"/>	yes	<input type="checkbox"/>	/	no	<input type="checkbox"/>
yes	<input type="checkbox"/>	/	no	<input type="checkbox"/>																											
yes	<input type="checkbox"/>	/	no	<input type="checkbox"/>																											
yes	<input type="checkbox"/>	/	no	<input type="checkbox"/>																											
yes	<input type="checkbox"/>	/	no	<input type="checkbox"/>																											
yes	<input type="checkbox"/>	/	no	<input type="checkbox"/>																											
yes	<input type="checkbox"/>	/	no	<input type="checkbox"/>																											

4. Document PDFs (paper copy only upon request):

<p>ARCHAEOLOGICAL Resource Records¹ NON-ARCHAEOLOGICAL Resource Records Reports¹ "Other"² Reports²</p>	<p>Within project area</p> <table border="0"> <tr><td>yes</td><td><input type="checkbox"/></td><td>/</td><td>no</td><td><input type="checkbox"/></td></tr> <tr><td>yes</td><td><input type="checkbox"/></td><td>/</td><td>no</td><td><input type="checkbox"/></td></tr> <tr><td>yes</td><td><input type="checkbox"/></td><td>/</td><td>no</td><td><input type="checkbox"/></td></tr> <tr><td>yes</td><td><input type="checkbox"/></td><td>/</td><td>no</td><td><input type="checkbox"/></td></tr> </table> <p>Within <u>.5</u> mi. radius</p> <table border="0"> <tr><td>yes</td><td><input type="checkbox"/></td><td>/</td><td>no</td><td><input type="checkbox"/></td></tr> <tr><td>yes</td><td><input type="checkbox"/></td><td>/</td><td>no</td><td><input type="checkbox"/></td></tr> <tr><td>yes</td><td><input type="checkbox"/></td><td>/</td><td>no</td><td><input type="checkbox"/></td></tr> </table>	yes	<input type="checkbox"/>	/	no	<input type="checkbox"/>	yes	<input type="checkbox"/>	/	no	<input type="checkbox"/>	yes	<input type="checkbox"/>	/	no	<input type="checkbox"/>	yes	<input type="checkbox"/>	/	no	<input type="checkbox"/>	yes	<input type="checkbox"/>	/	no	<input type="checkbox"/>	yes	<input type="checkbox"/>	/	no	<input type="checkbox"/>	yes	<input type="checkbox"/>	/	no	<input type="checkbox"/>
yes	<input type="checkbox"/>	/	no	<input type="checkbox"/>																																
yes	<input type="checkbox"/>	/	no	<input type="checkbox"/>																																
yes	<input type="checkbox"/>	/	no	<input type="checkbox"/>																																
yes	<input type="checkbox"/>	/	no	<input type="checkbox"/>																																
yes	<input type="checkbox"/>	/	no	<input type="checkbox"/>																																
yes	<input type="checkbox"/>	/	no	<input type="checkbox"/>																																
yes	<input type="checkbox"/>	/	no	<input type="checkbox"/>																																

CHRIS Data Request Form

5. Eligibility Listings and Documentation:

Within project area Within .5 mi. radius

OHP Built Environment Resources Directory³:

Directory listing only (Excel format) yes / no yes / no
 Associated documentation⁴ yes / no yes / no

OHP Archaeological Resources Directory^{1,5}:

Directory listing only (Excel format) yes / no yes / no
 Associated documentation⁴ yes / no yes / no

California Inventory of Historic Resources (1976):

Directory listing only (PDF format) yes / no yes / no
 Associated documentation⁴ yes / no yes / no

6. Additional Information:

The following sources of information may be available through the Information Center. However, several of these sources are now available on the [OHP website](#) and can be accessed directly. The Office of Historic Preservation makes no guarantees about the availability, completeness, or accuracy of the information provided through these sources. Indicate below if the Information Center should review and provide documentation (if available) of any of the following sources as part of this request.

Caltrans Bridge Survey	yes <input type="checkbox"/> / no <input type="checkbox"/>
Ethnographic Information	yes <input type="checkbox"/> / no <input type="checkbox"/>
Historical Literature	yes <input type="checkbox"/> / no <input type="checkbox"/>
Historical Maps	yes <input type="checkbox"/> / no <input type="checkbox"/>
Local Inventories	yes <input type="checkbox"/> / no <input type="checkbox"/>
GLO and/or Rancho Plat Maps	yes <input type="checkbox"/> / no <input type="checkbox"/>
Shipwreck Inventory	yes <input type="checkbox"/> / no <input type="checkbox"/>
Soil Survey Maps	yes <input type="checkbox"/> / no <input type="checkbox"/>

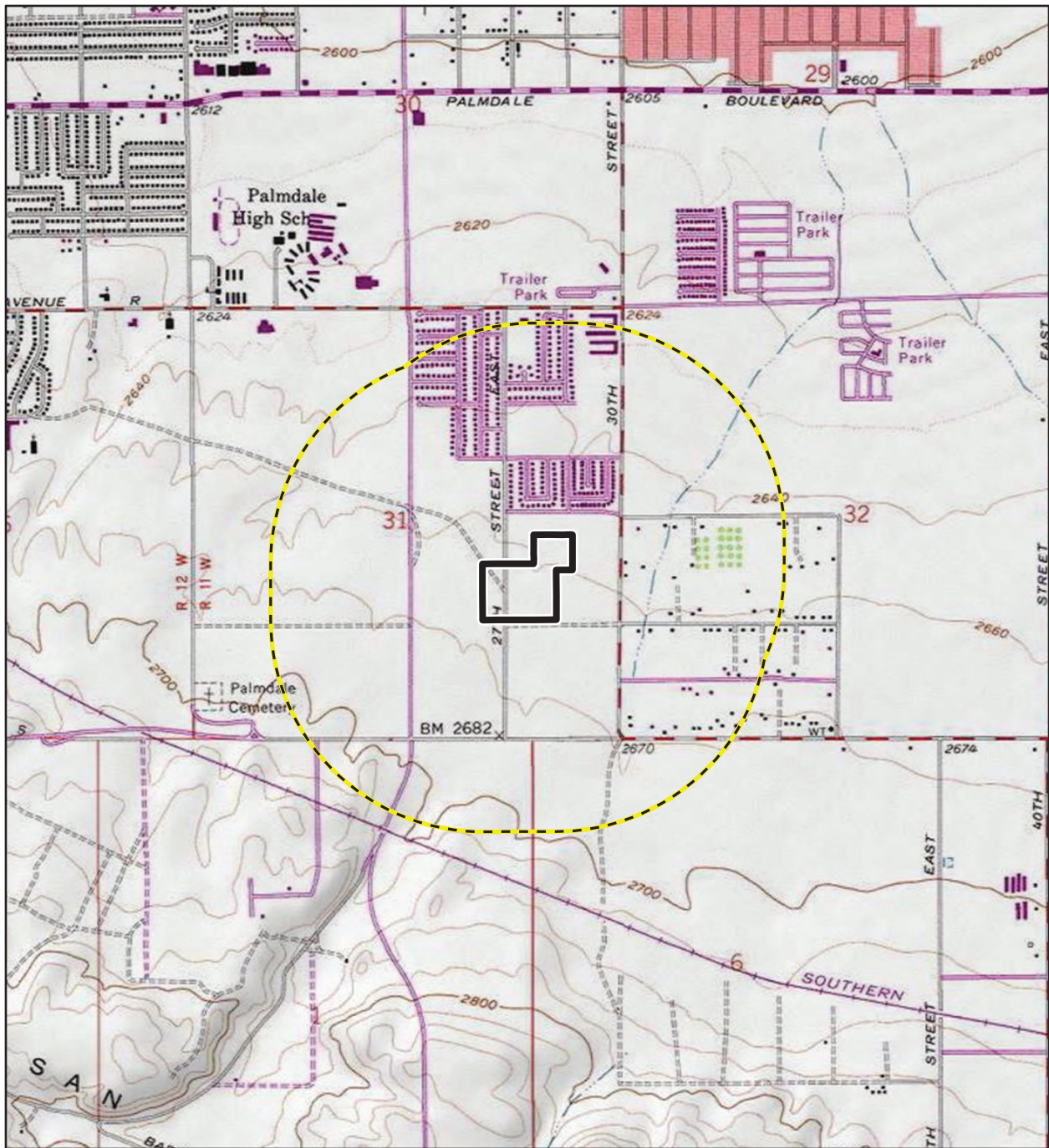
¹ In order to receive archaeological information, requestor must meet qualifications as specified in Section III of the current version of the California Historical Resources Information System Information Center Rules of Operation Manual and be identified as an Authorized User or Conditional User under an active CHRIS Access and Use Agreement.

² "Other" Reports GIS layer consists of report study areas for which the report content is almost entirely non-fieldwork related (e.g., local/regional history, or overview) and/or for which the presentation of the study area boundary may or may not add value to a record search.



³ Provided as Excel spreadsheets with no cost for the rows; the only cost for this component is IC staff time. Includes, but not limited to, information regarding National Register of Historic Places, California Register of Historical Resources, California State Historical Landmarks, California State Points of Historical Interest, and historic building surveys. Previously known as the HRI and then as the HPD, it is now known as the Built Environment Resources Directory (BERD). The Office of Historic Preservation compiles this documentation and it is the source of the official status codes for evaluated resources.

⁴ Associated documentation will vary by resource. Contact the IC for further details.

⁵ Provided as Excel spreadsheets with no cost for the rows; the only cost for this component is IC staff time. Previously known as the Archaeological Determinations of Eligibility, now it is known as the Archaeological Resources Directory (ARD). The Office of Historic Preservation compiles this documentation and it is the source of the official status codes for evaluated resources.



Imagery provided by National Geographic Society, Esri and its licensors © 2022. Palmdale Quadrangle. T05N R11W S06 & T05N R12W S01 & T06N R11W S31,32. The topographic representation depicted in this map may not portray all of the features currently found in the vicinity today and/or features depicted in this map may have changed since the original topographic map was assembled.

-  Half-Mile Buffer
-  Area of Potential Effects



0 1,000 2,000 Feet

0 250 500 Meters

1:24,000

Records Search Map



Report List

Palmdale SCAG REAP 21-12086

Report No.	Other IDs	Year	Author(s)	Title	Affiliation	Resources
LA-01486		1985	Drover, Christopher E.	Environmental Evaluation & Archaeological Assessment of the Joshua Hills Specific Plan, Palmdale, Los Angeles County	Chambers Consultants and Planners	
LA-02253	Paleo -	1991	Salls, Roy A.	Report of Archaeological/paleontological Reconnaissance Survey Of: Five Acre Site Sw Corner 30th St. and E Ave. R-4 City of Palmdale, California.	NCPA	
LA-07483		2004	Bonner, Wayne H. and Christeen Taniguchi	Records Search Results and Site Visit for Sprint Telecommunications Facility Candidate La60xc556d (jiffy Lube/hollywood Video) Vacant Lot Near 2540 Avenue S, Palmdale, Los Angeles County, California	Michael Brandman Associates	
LA-07843	Paleo -	2002	Goodwin, Riordan L. and Reynolds, Robert E.	Cultural and Paleontological Resource Mitigation, Avenue S Widening, City of Palmdale, Los Angeles County, California	LSA Associates, Inc.	19-002274, 19-002275, 19-002772, 19-002773, 19-002776, 19-186094
LA-07975		2006	Hudlow, Scott M.	A Phase I Cultural Resource Survey for APN 3019-003-007, Property at 30th Street East and Avenue R-4, City of Palmdale, California	Hudlow Cultural Resource Associates	
LA-09011		2005	Nixon, Rachael A. and C. Dennis Taylor	Cultural Resources Ground Disturbance Monitoring of Avenue S Corridor Improvement Project, City of Palmdale, Los Angeles County, California	Applied EarthWorks, Inc.	19-002772, 19-002773, 19-002774, 19-002775, 19-002776
LA-09159		2007	Bonner, Wayne H.	Cultural Resources Records Search and Site Visit Results for T-Mobile Candidate SV11384A (Desert Rose Elementary), 37730 27th Street East, Palmdale, Los Angeles County, California	Michael Brandman Associates	
LA-09679	Paleo -	2008	Loftus, Shannon L. and Robin D. Turner	Cultural Resource And Paleontological Assessment, North Los Angeles / Kern County, Regional Recycled Water Master Plan, Los Angeles / East Kern Counties, California.	ArchaeoPaleo Resource Management, Inc.	19-003860, 19-003861, 19-100646, 19-100647, 19-100648, 19-100649, 19-100650, 19-100651, 19-100652

Report List

Palmdale SCAG REAP 21-12086

Report No.	Other IDs	Year	Author(s)	Title	Affiliation	Resources
LA-11135		2011	Tang, Bai "Tom" and Hogan, Michael	Historical/Archaeological Resources Survey Report, City of Palmdale Recycled Water Master Plan Supplement, Los Angeles County, California	CRM Tech	19-000827, 19-000878, 19-001365, 19-001419, 19-001420, 19-001553, 19-001587, 19-001588, 19-001600, 19-001609, 19-001610, 19-001613, 19-001614, 19-001687, 19-001697, 19-001709, 19-001717, 19-001823, 19-001873, 19-001874, 19-002194, 19-002535, 19-002536, 19-002537, 19-002732, 19-002734, 19-002772, 19-002773, 19-002774, 19-002775, 19-002776, 19-002808, 19-002909, 19-002910, 19-002911, 19-002912, 19-003258, 19-003377, 19-003384, 19-003785, 19-003786, 19-003861, 19-004154, 19-004160, 19-004161, 19-004184, 19-100308, 19-100312, 19-100325, 19-100326, 19-100626, 19-150148, 19-186094, 19-186813, 19-186814, 19-186815, 19-186816, 19-186817, 19-186818, 19-186819, 19-186820, 19-186821, 19-186822, 19-186823, 19-186824, 19-186825, 19-186826, 19-186827, 19-186828, 19-186829, 19-186830, 19-186831, 19-186832, 19-186833, 19-186834, 19-186835, 19-186836, 19-186837, 19-186838, 19-186839, 19-186840, 19-186841, 19-186842, 19-186843, 19-186844, 19-186845, 19-186846, 19-186847, 19-186848, 19-186849, 19-186850, 19-186851, 19-186852, 19-186853, 19-186854, 19-186855, 19-186957, 19-188187, 19-188188, 19-188439

Attachment 4

Sacred Lands File Search Results/AB 52 Contact List

Local Government Tribal Consultation List Request

Native American Heritage Commission

1550 Harbor Blvd, Suite 100
West Sacramento, CA 95691
916-373-3710
916-373-5471 – Fax
nahc@nahc.ca.gov

Type of List Requested

CEQA Tribal Consultation List (AB 52) – *Per Public Resources Code § 21080.3.1, subs. (b), (d), (e) and 21080.3.2*

General Plan (SB 18) - *Per Government Code § 65352.3.*

Local Action Type:

General Plan

General Plan Element

General Plan Amendment

Specific Plan

Specific Plan Amendment

Pre-planning Outreach Activity

Required Information

Project Title: SCAG REAP Project 2-B - Palmdale Housing Project

Local Government/Lead Agency: Kimley-Horn

Contact Person: Andrew Rodriguez, Rincon Consultants, Inc.

Street Address: 250 E 1st Street, Suite 1400

City: Los Angeles

Zip: 90012

Phone: 213-788-4842

Fax: 213-788-4842

Email: arodriguez@rinconconsultants.com

Specific Area Subject to Proposed Action

County: Los Angeles

City/Community: Palmdale

Project Description:

The project involves a housing development in a currently undeveloped portion of Palmdale that is approximately 13 acres. The project will include a field survey. Ground disturbance is expected.

Additional Request

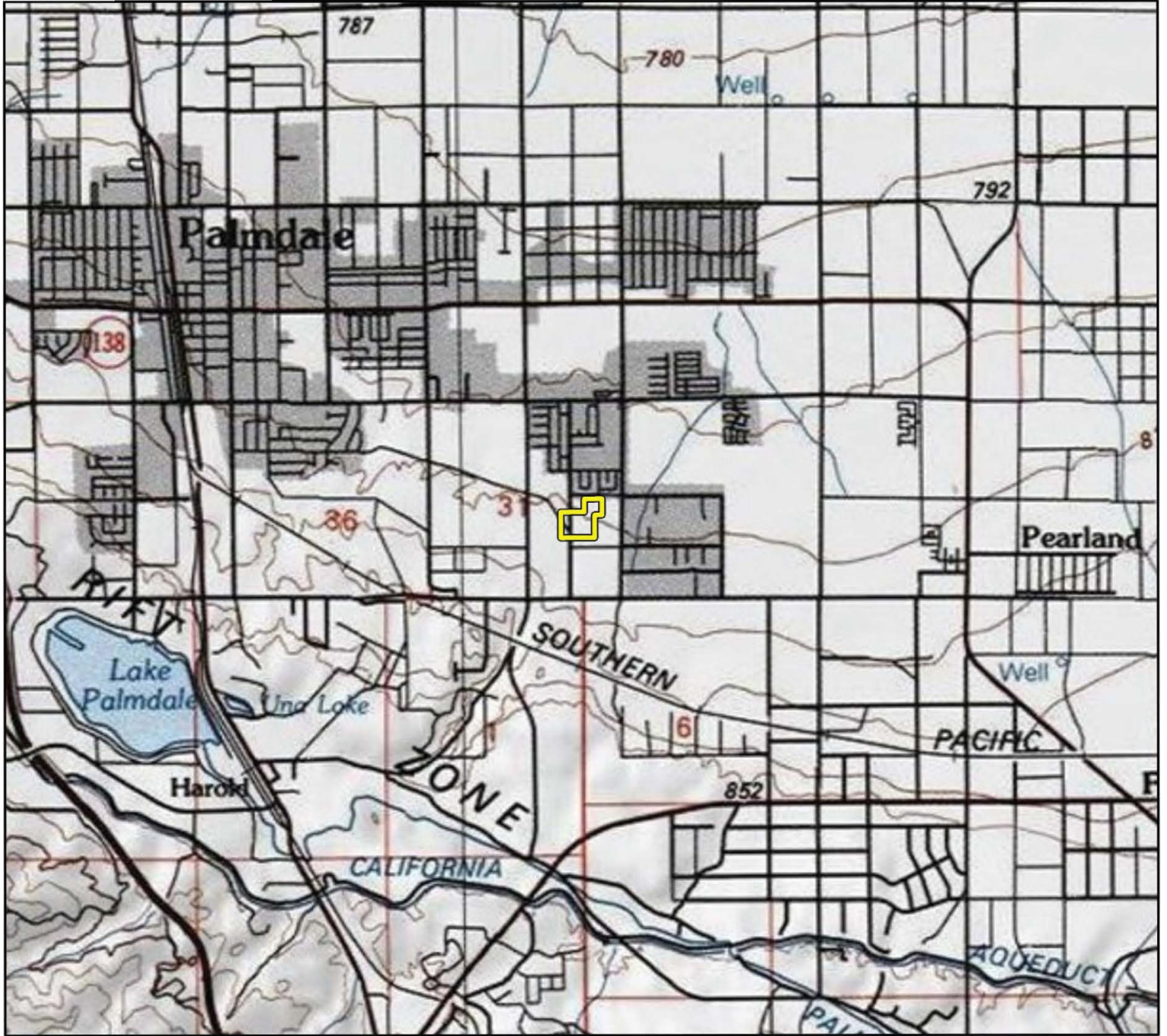
Sacred Lands File Search - *Required Information:*

USGS Quadrangle Name(s): Palmdale

Township: 06N

Range: 11W

Section(s): 31

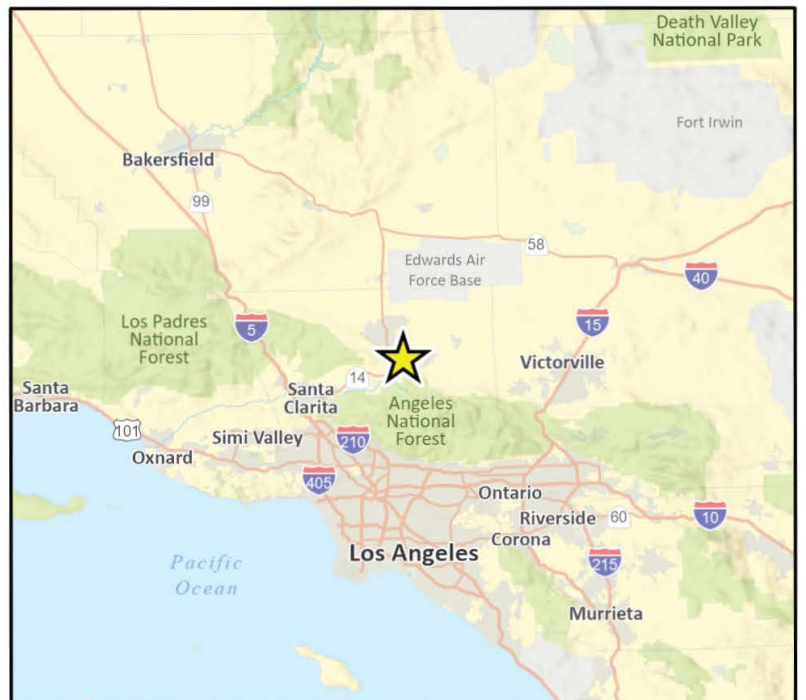


Basemap provided by National Geographic Society, Esri and their licensors © 2022. Palmdale Quadrangle. T06N R11W S31. The topographic representation depicted in this map may not portray all of the features currently found in the vicinity today and/or features depicted in this map may have changed since the original topographic map was assembled.

CR RS and Proj Locn Figures
CRFig 1 Proj Locn Map

 Project Location

0 2,500 5,000 Feet



NATIVE AMERICAN HERITAGE COMMISSION

November 9, 2022

Andrew Rodriguez
Rincon Consultants, Inc.

Via Email to: arodriguez@rinconconsultants.com

Re: Native American Tribal Consultation, Pursuant to the Assembly Bill 52 (AB 52), Amendments to the California Environmental Quality Act (CEQA) (Chapter 532, Statutes of 2014), Public Resources Code Sections 5097.94 (m), 21073, 21074, 21080.3.1, 21080.3.2, 21082.3, 21083.09, 21084.2 and 21084.3, SCAG REAP Project 2-B – Palmdale Housing Project, Los Angeles County

Dear Mr. Rodriguez:

Pursuant to Public Resources Code section 21080.3.1 (c), attached is a consultation list of tribes that are traditionally and culturally affiliated with the geographic area of the above-listed project. Please note that the intent of the AB 52 amendments to CEQA is to avoid and/or mitigate impacts to tribal cultural resources, (Pub. Resources Code §21084.3 (a)) ("Public agencies shall, when feasible, avoid damaging effects to any tribal cultural resource.")

Public Resources Code sections 21080.3.1 and 21084.3(c) require CEQA lead agencies to consult with California Native American tribes that have requested notice from such agencies of proposed projects in the geographic area that are traditionally and culturally affiliated with the tribes on projects for which a Notice of Preparation or Notice of Negative Declaration or Mitigated Negative Declaration has been filed on or after July 1, 2015. Specifically, Public Resources Code section 21080.3.1 (d) provides:

Within 14 days of determining that an application for a project is complete or a decision by a public agency to undertake a project, the lead agency shall provide formal notification to the designated contact of, or a tribal representative of, traditionally and culturally affiliated California Native American tribes that have requested notice, which shall be accomplished by means of at least one written notification that includes a brief description of the proposed project and its location, the lead agency contact information, and a notification that the California Native American tribe has 30 days to request consultation pursuant to this section.

The AB 52 amendments to CEQA law does not preclude initiating consultation with the tribes that are culturally and traditionally affiliated within your jurisdiction prior to receiving requests for notification of projects in the tribe's areas of traditional and cultural affiliation. The Native American Heritage Commission (NAHC) recommends, but does not require, early consultation as a best practice to ensure that lead agencies receive sufficient information about cultural resources in a project area to avoid damaging effects to tribal cultural resources.

The NAHC also recommends, but does not require that agencies should also include with their notification letters, information regarding any cultural resources assessment that has been completed on the area of potential effect (APE), such as:

1. The results of any record search that may have been conducted at an Information Center of the California Historical Resources Information System (CHRIS), including, but not limited to:



CHAIRPERSON
Laura Miranda
Luiseño

VICE CHAIRPERSON
Reginald Pagaling
Chumash

SECRETARY
Sara Dutschke
Miwok

COMMISSIONER
Isaac Bojorquez
Ohlone-Costanoan

COMMISSIONER
Buffy McQuillen
Yokayo Pomo, Yuki,
Nomlaki

COMMISSIONER
Wayne Nelson
Luiseño

COMMISSIONER
Stanley Rodriguez
Kumeyaay

COMMISSIONER
[Vacant]

COMMISSIONER
[Vacant]

EXECUTIVE SECRETARY
Raymond C. Hitchcock
Miwok/Nisenan

NAHC HEADQUARTERS
1550 Harbor Boulevard
Suite 100
West Sacramento,
California 95691
(916) 373-3710
nahc@nahc.ca.gov
NAHC.ca.gov

- A listing of any and all known cultural resources that have already been recorded on or adjacent to the APE, such as known archaeological sites;
- Copies of any and all cultural resource records and study reports that may have been provided by the Information Center as part of the records search response;
- Whether the records search indicates a low, moderate, or high probability that unrecorded cultural resources are located in the APE; and
- If a survey is recommended by the Information Center to determine whether previously unrecorded cultural resources are present.

2. The results of any archaeological inventory survey that was conducted, including:

- Any report that may contain site forms, site significance, and suggested mitigation measures.

All information regarding site locations, Native American human remains, and associated funerary objects should be in a separate confidential addendum, and not be made available for public disclosure in accordance with Government Code section 6254.10.

3. The result of any Sacred Lands File (SLF) check conducted through the Native American Heritage Commission was negative.

4. Any ethnographic studies conducted for any area including all or part of the APE; and

5. Any geotechnical reports regarding all or part of the APE.

Lead agencies should be aware that records maintained by the NAHC and CHRIS are not exhaustive and a negative response to these searches does not preclude the existence of a tribal cultural resource. A tribe may be the only source of information regarding the existence of a tribal cultural resource.

This information will aid tribes in determining whether to request formal consultation. In the event that they do, having the information beforehand will help to facilitate the consultation process.

If you receive notification of change of addresses and phone numbers from tribes, please notify the NAHC. With your assistance, we can assure that our consultation list remains current.

If you have any questions, please contact me at my email address: Andrew.Green@nahc.ca.gov.

Sincerely,



Andrew Green
Cultural Resources Analyst

Attachment

**Native American Heritage Commission
Tribal Consultation List
Los Angeles County
11/9/2022**

Fernandeno Tataviam Band of Mission Indians

Rudy Ortega, Tribal President
1019 Second Street, Suite 1 Tataviam
San Fernando, CA, 91340
Phone: (818) 837 - 0794
Fax: (818) 837-0796
thcp@tataviam-nsn.us

San Manuel Band of Mission Indians

Jessica Mauck, Director of Cultural Resources
26569 Community Center Drive Serrano
Highland, CA, 92346
Phone: (909) 864 - 8933
Jessica.Mauck@sanmanuel-nsn.gov

Morongo Band of Mission Indians

Ann Brierty, THPO
12700 Pumarra Road Cahuilla
Banning, CA, 92220 Serrano
Phone: (951) 755 - 5259
Fax: (951) 572-6004
abrierty@morongo-nsn.gov

Serrano Nation of Mission Indians

Wayne Walker, Co-Chairperson
P. O. Box 343 Serrano
Patton, CA, 92369
Phone: (253) 370 - 0167
serranonation1@gmail.com

Morongo Band of Mission Indians

Robert Martin, Chairperson
12700 Pumarra Road Cahuilla
Banning, CA, 92220 Serrano
Phone: (951) 755 - 5110
Fax: (951) 755-5177
abrierty@morongo-nsn.gov

Serrano Nation of Mission Indians

Mark Cochrane, Co-Chairperson
P. O. Box 343 Serrano
Patton, CA, 92369
Phone: (909) 528 - 9032
serranonation1@gmail.com

Quechan Tribe of the Fort Yuma Reservation

Jill McCormick, Historic Preservation Officer
P.O. Box 1899 Quechan
Yuma, AZ, 85366
Phone: (760) 572 - 2423
historicpreservation@quechantribe.com

San Fernando Band of Mission Indians

Donna Yocum, Chairperson
P.O. Box 221838 Kitanemuk
Newhall, CA, 91322 Vanyume
Phone: (503) 539 - 0933 Tataviam
Fax: (503) 574-3308
ddyocum@comcast.net

This list is current only as of the date of this document. Distribution of this list does not relieve any person of statutory responsibility as defined in Section 7050.5 of the Health and Safety Code, Section 5097.94 of the Public Resources Code and section 5097.98 of the Public Resources Code.

This list is only applicable for consultation with Native American tribes under Public Resources Code Sections 21080.3.1 for the proposed SCAG REAP Project 2-B – Palmdale Housing Project, Los Angeles County.

Attachment 5

Confidential – Not for Public Distribution

Department of Parks and Recreation 523 Forms