

CULTURAL RESOURCES ASSESSMENT

Assessor Parcel Number 0459-432-48
Adelanto, San Bernardino County, California

Prepared for:

Mike Tokatlyan
Mojave Sun LLC
15863 Parthenia Street
North Hills, California 91343

Prepared by:

David Brunzell, M.A., RPA
BCR Consulting LLC
Claremont, California 91711

Project No. MJS2201

Data Base Information:

Type of Study: Intensive Survey

Resources: None

Keywords: None

USGS Quadrangle: 7.5-minute Adelanto (1993), California



BCRCONSULTING LLC

July 19, 2022

MANAGEMENT SUMMARY

BCR Consulting LLC (BCR Consulting) is under contract to Mojave Sun LLC to complete a Cultural Resources Assessment of Assessor Parcel Number 0459-432-48 (the project) located in the City of Adelanto (City), San Bernardino County, California. A cultural resources records search, intensive-level pedestrian field survey, Native American Heritage Commission (NAHC) Sacred Lands File Search, and vertebrate paleontological resources overview were conducted for the project in partial fulfillment of the California Environmental Quality Act (CEQA). The records search has revealed that four previous cultural resource studies have taken place, and four cultural resources have been identified within the records search radius. The project site has never been subject to a previous cultural resources assessment, and no cultural resources have been identified within its boundaries. No cultural resources of any kind (including historic-period or prehistoric archaeological resources, or historic-period architectural resources) were identified during the field survey. Therefore, no significant impact related to historical resources is anticipated and no further investigations are recommended for the proposed project unless:

- The proposed project is changed to include areas that have not been subject to this cultural resource assessment;
- Cultural materials are encountered during project activities.

The current study attempted to determine whether significant archaeological deposits were present on the proposed project site. Although none were yielded during the records search and field survey, ground-disturbing activities have the potential to reveal buried deposits not observed on the surface. Prior to the initiation of ground-disturbing activities, field personnel should be alerted to the possibility of buried prehistoric or historic cultural deposits. In the event that field personnel encounter buried cultural materials, work in the immediate vicinity of the find should cease and a qualified archaeologist should be retained to assess the significance of the find. The qualified archaeologist shall have the authority to stop or divert construction excavation as necessary. If the qualified archaeologist finds that any cultural resources present meet eligibility requirements for listing on the California Register or the National Register of Historic Places (National Register), plans for the treatment, evaluation, and mitigation of impacts to the find will need to be developed. Prehistoric or historic cultural materials that may be encountered during ground-disturbing activities include:

- historic-period artifacts such as glass bottles and fragments, cans, nails, ceramic and pottery fragments, and other metal objects;
- historic-period structural or building foundations, walkways, cisterns, pipes, privies, and other structural elements;
- prehistoric flaked-stone artifacts and debitage (waste material), consisting of obsidian, basalt, and or cryptocrystalline silicates;
- groundstone artifacts, including mortars, pestles, and grinding slabs;
- dark, greasy soil that may be associated with charcoal, ash, bone, shell, flaked stone, groundstone, and fire affected rocks;
- human remains.

Findings were negative during the Sacred Lands File search with the NAHC. The results of the Sacred Lands File search are provided in Appendix A. The Legislature added requirements regarding tribal cultural resources for CEQA in Assembly Bill 52 (AB 52) that took effect July 1, 2015. AB 52 requires consultation with California Native American tribes

and consideration of tribal cultural resources in the CEQA process. By including tribal cultural resources early in the CEQA process, the legislature intended to ensure that local and Tribal governments, public agencies, and project proponents would have information available, early in the project planning process, to identify and address potential adverse impacts to tribal cultural resources. By taking this proactive approach, the legislature also intended to reduce the potential for delay and conflicts in the environmental review process. To help determine whether a project may have such an effect, the Public Resources Code requires a lead agency to consult with any California Native American tribe that requests consultation and is traditionally and culturally affiliated with the geographic area of a Proposed Project. Since the City will initiate and carry out the required AB52 Native American Consultation, the results of the consultation are not provided in this report. However, this report may be used during the consultation process, and BCR Consulting staff is available to answer questions and address concerns as necessary.

According to CEQA Guidelines, projects subject to CEQA must determine whether the project would “directly or indirectly destroy a unique paleontological resource”. The Paleontological Overview provided in Appendix B has recommended that:

The geologic units underlying this project are mapped as alluvial silt, sand and gravel from the Holocene period (Dibblee and Minch 2008). Holocene alluvial units are considered to be of high preservation value, but material found is unlikely to be fossil material due to the relatively modern associated dates of the deposits. However, if development requires any substantial depth of disturbance, the likelihood of reaching Pleistocene alluvial sediments would increase. The Western Science Center does not have localities within the project area or within a 1 mile radius.

While the presence of any fossil material is unlikely, if excavation activity disturbs deeper sediment dating to the earliest parts of the Holocene or Late Pleistocene periods, the material would be scientifically significant. Excavation activity associated with the development of the project area is unlikely to be paleontologically sensitive, but caution during development should be observed.

If human remains are encountered during any project activities, State Health and Safety Code Section 7050.5 states that no further disturbance shall occur until the County Coroner has made a determination of origin and disposition pursuant to Public Resources Code Section 5097.98. The County Coroner must be notified of the find immediately. If the remains are determined to be prehistoric, the Coroner will notify the NAHC, which will determine and notify a Most Likely Descendant (MLD). With the permission of the landowner or his/her authorized representative, the MLD may inspect the site of the discovery. The MLD shall complete the inspection within 48 hours of notification by the NAHC.

TABLE OF CONTENTS

MANAGEMENT SUMMARY	ii
INTRODUCTION.....	1
PROJECT DESCRIPTION AND LOCATION.....	1
REGULATORY SETTING	1
NATURAL SETTING	5
GEOLOGY	5
HYDROLOGY	5
BIOLOGY	5
CULTURAL SETTING.....	5
PREHISTORY	5
ETHNOGRAPHY.....	7
HISTORY	7
PERSONNEL.....	8
METHODS	8
RESEARCH	8
FIELD SURVEY	9
RESULTS	9
RESEARCH	9
FIELD SURVEY	9
RECOMMENDATIONS	9
REFERENCES.....	12

FIGURES

1: Project Location Map.....	2
------------------------------	---

TABLES

A: Cultural Resources and Reports Within One Mile of the Project Site	9
---	---

APPENDICES

A: CULTURAL RESOURCES RECORDS SEARCH BIBLIOGRAPHY	
B: NATIVE AMERICAN HERITAGE COMMISSION CORRESPONDENCE	
C: PALEONTOLOGICAL RESOURCES OVERVIEW	
D: PROJECT PHOTOGRAPHS	

INTRODUCTION

BCR Consulting LLC (BCR Consulting) is under contract to Mojave Sun LLC to complete a Cultural Resources Assessment of Assessor Parcel Numer 0459-432-48 (the project) located in the City of Adelanto (City), San Bernardino County, California. A cultural resources records search, reconnaissance-level pedestrian field survey, Native American Heritage Commission (NAHC) Sacred Lands File Search, and vertebrate paleontological resources overview were conducted for the project in partial fulfillment of the California Environmental Quality Act (CEQA).

Project Description and Location

This will be a development project. The project site, as identified in this report, will occupy a portion of Section 31, Township 6 North, Range 5 West, San Bernardino Baseline and Meridian. It is depicted on the United States Geological Survey (USGS) *Adelanto* (1993), *California* 7.5-minute topographic quadrangle (Figure 1).

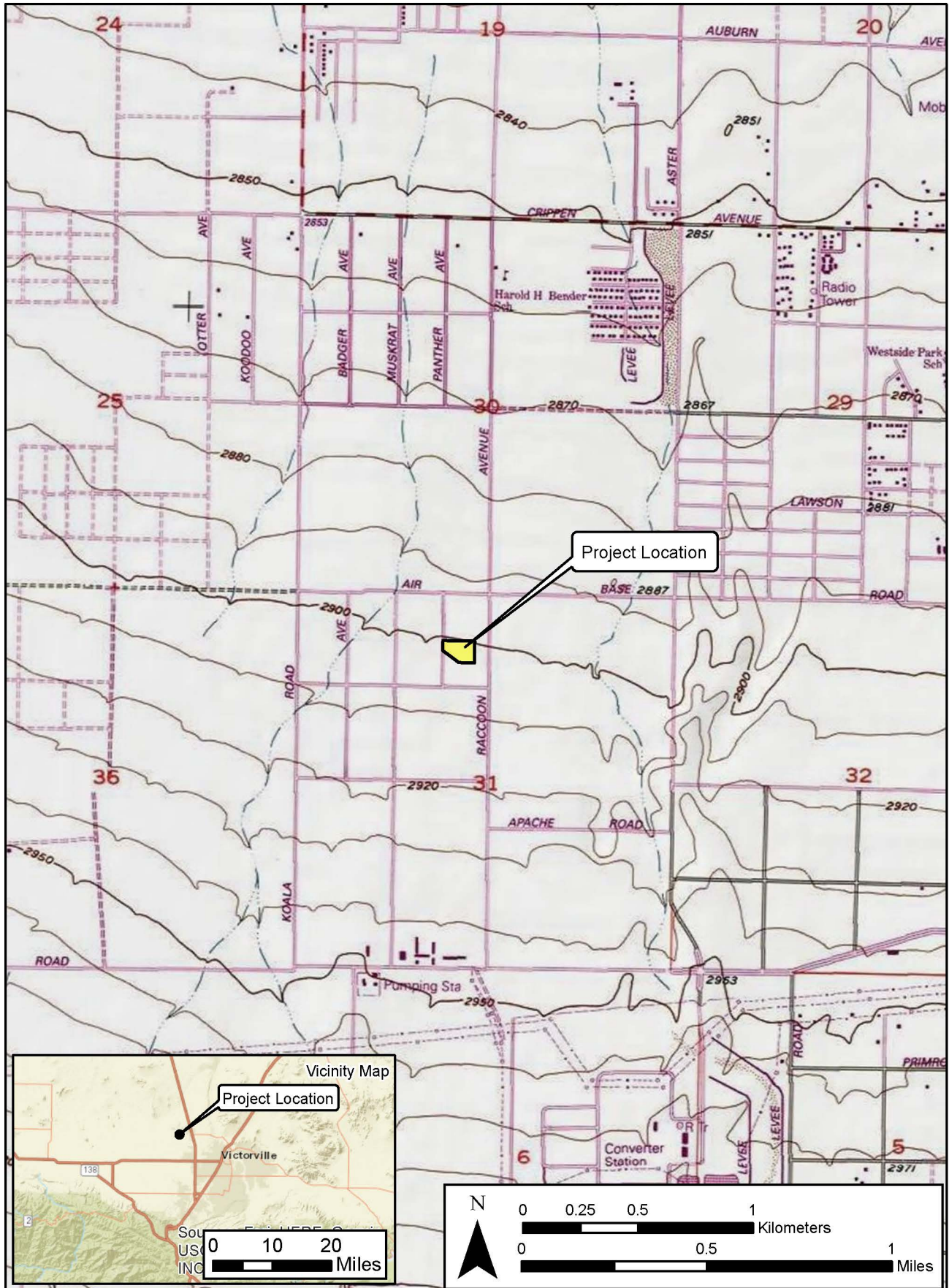
Regulatory Setting

The California Environmental Quality Act. CEQA applies to all discretionary projects undertaken or subject to approval by the state's public agencies (California Code of Regulations 14(3), § 15002(i)). Under CEQA, "A project with an effect that may cause a substantial adverse change in the significance of a historical resource is a project that may have a significant effect on the environment" (Cal. Code Regs. tit. 14(3), § 15064.5(b)). State CEQA Guidelines section 15064.5(a) defines a "historical resource" as a resource that meets one or more of the following criteria:

- Listed in, or eligible for listing in, the California Register of Historical Resources (California Register)
- Listed in a local register of historical resources (as defined at Cal. Public Res. Code § 5020.1(k))
- Identified as significant in a historical resource survey meeting the requirements of § 5024.1(g) of the Cal. Public Res. Code
- Determined to be a historical resource by a project's lead agency (Cal. Code Regs. tit. 14(3), § 15064.5(a))

A historical resource consists of "Any object, building, structure, site, area, place, record, or manuscript which a lead agency determines to be historically significant or significant in the architectural, engineering, scientific, economic, agricultural, educational, social, political, military, or cultural annals of California. . . Generally, a resource shall be considered by the lead agency to be 'historically significant' if the resource meets the criteria for listing in the California Register of Historical Resources" (Cal. Code Regs. tit. 14(3), § 15064.5(a)(3)).

The significance of a historical resource is impaired when a project demolishes or materially alters in an adverse manner those physical characteristics of a historical resource that convey its historical significance and that justify its eligibility for the California Register. If an



impact on a historical or archaeological resource is significant, CEQA requires feasible measures to minimize the impact (State CEQA Guidelines § 15126.4 (a)(1)). Mitigation of significant impacts must lessen or eliminate the physical impact that the project will have on the resource.

Section 5024.1 of the Cal. Public Res. Code established the California Register. Generally, a resource is considered by the lead agency to be “historically significant” if the resource meets the criteria for listing in the California Register (Cal. Code Regs. tit. 14(3), § 15064.5(a)(3)). The eligibility criteria for the California Register are similar to those of the National Register of Historic Places (National Register), and a resource that meets one or more of the eligibility criteria of the National Register will be eligible for the California Register.

The California Register program encourages public recognition and protection of resources of architectural, historical, archaeological, and cultural significance, identifies historical resources for state and local planning purposes, determines eligibility for state historic preservation grant funding and affords certain protections under CEQA. Criteria for Designation:

1. Associated with events that have made a significant contribution to the broad patterns of local or regional history or the cultural heritage of California or the United States.
2. Associated with the lives of persons important to local, California or national history.
3. Embodies the distinctive characteristics of a type, period, region or method of construction or represents the work of a master or possesses high artistic values.
4. Has yielded, or has the potential to yield, information important to the prehistory or history of the local area, California or the nation.

In addition to meeting one or more of the above criteria, the California Register requires that sufficient time has passed since a resource’s period of significance to “obtain a scholarly perspective on the events or individuals associated with the resources.” (CCR 4852 [d][2]). Fifty years is normally considered sufficient time for a potential historical resource, and in order that the evaluation remain valid for a minimum of five years after the date of this report, all resources older than 45 years (i.e. resources from the “historic-period”) will be evaluated for California Register listing eligibility, or CEQA significance. The California Register also requires that a resource possess integrity. This is defined as the ability for the resource to convey its significance through seven aspects: location, setting, design, materials, workmanship, feeling, and association.

Finally, CEQA requires that significant effects on unique archaeological resources be considered and addressed. CEQA defines a unique archaeological resource as any archaeological artifact, object, or site about which it can be clearly demonstrated that, without merely adding to the current body of knowledge, there is a high probability that it meets any of the following criteria:

1. Contains information needed to answer important scientific research questions and there is a demonstrable public interest in that information.

2. Has a special and particular quality such as being the oldest of its type or the best available example of its type.
3. Is directly associated with a scientifically recognized important prehistoric or historic event or person.

CEQA Guidelines Section 15064.5 Appendix G includes significance criteria relative to archaeological and historical resources. These have been utilized as thresholds of significance here, and a project would have a significant environmental impact if it would:

- a) cause a substantial adverse change in the significance of a historical resource as defined in section 10564.5;
- b) Cause a substantial adverse change in the significance of an archaeological resource pursuant to Section 10564.5;
- c) Disturb any human remains, including those interred outside of formal cemeteries.

Tribal Cultural Resources. The Legislature added requirements regarding tribal cultural resources for CEQA in Assembly Bill 52 (AB 52) that took effect July 1, 2015. AB 52 requires consultation with California Native American tribes and consideration of tribal cultural resources in the CEQA process. By including tribal cultural resources early in the CEQA process, the legislature intended to ensure that local and Tribal governments, public agencies, and project proponents would have information available, early in the project planning process, to identify and address potential adverse impacts to tribal cultural resources. By taking this proactive approach, the legislature also intended to reduce the potential for delay and conflicts in the environmental review process. To help determine whether a project may have such an effect, the Public Resources Code requires a lead agency to consult with any California Native American tribe that requests consultation and is traditionally and culturally affiliated with the geographic area of a Proposed Project. Since the City will initiate and carry out the required AB52 Native American Consultation, the results of the consultation are not provided in this report. However, this report may be used during the consultation process, and BCR Consulting staff are available to answer questions and address comments as necessary.

Paleontological Resources. CEQA provides guidance relative to significant impacts on paleontological resources, indicating that a project would have a significant impact on paleontological resources if it disturbs or destroys a unique paleontological resource or site or unique geologic feature. Section 5097.5 of the California Public Resources Code specifies that any unauthorized removal of paleontological remains is a misdemeanor. Further, California Penal Code Section 622.5 sets the penalties for damage or removal of paleontological resources. CEQA documentation prepared for projects would be required to analyze paleontological resources as a condition of the CEQA process to disclose potential impacts. Please note that as of January 2018 paleontological resources are considered in the geological rather than cultural category. Therefore, paleontological resources are not summarized in the body of this report. A paleontological overview completed by the Western Science Center is provided as Appendix B.

NATURAL SETTING

Geology

The project is located in the southwestern portion of the Mojave Desert. Sediments within the project boundaries include a geologic unit composed of old alluvial deposits formed during the Pleistocene and young alluvial-fan deposits formed during the late Pleistocene and Holocene Epochs of the Quaternary Period (Miller and Matti 2006, Lambert 1994:17). The units are composed of “slightly consolidated, undissected to slightly dissected deposits of poorly sorted sand and silt containing scattered subangular pebbles” (Miller and Matti 2006). Field observations during the current study are basically consistent with these descriptions, and are described further in Results, below.

Hydrology

The project elevation is approximately 2,900 feet above mean sea level (AMSL). Sheetwashing on the project site occurs from south to north, and the nearest water sources are two intermittent drainages that run from south to north to the east and west of the project site. To the south, the peaks of the San Gabriel Mountains rise above 10,000 feet and are often capped with snow until late spring or early summer. The area currently exhibits a relatively arid climate, with dry, hot summers and cool winters. Rainfall ranges from five to 15 inches annually (Jaeger and Smith 1971:36-37). Precipitation usually occurs in the form of winter and spring rain or snow at high elevations, with occasional warm monsoonal showers in late summer.

Biology

The mild climate of the late Pleistocene allowed piñon-juniper woodland to thrive throughout most of the Mojave (Van Devender et al. 1987). The vegetation and climate during this epoch attracted significant numbers of Rancholabrean fauna, including dire wolf, saber toothed cat, short-faced bear, horse, camel, antelope, mammoth, as well as birds which included pelican, goose, duck, cormorant, and eagle (Reynolds 1988). The drier climate of the middle Holocene resulted in the local development of complementary flora and fauna, which remain largely intact to this day. Common native plants include creosote, cacti, rabbit bush, interior golden bush, cheese bush, species of sage, buckwheat at higher elevations and near drainages, Joshua tree, and various grasses. Common native animals include coyotes, cottontail and jackrabbits, rats, mice, desert tortoises, roadrunners, raptors, turkey vultures, and other bird species (see Williams et al. 2008).

CULTURAL SETTING

Prehistory

The prehistoric cultural setting of the Mojave Desert has been organized into many chronological frameworks (see Warren and Crabtree 1986; Bettinger and Taylor 1974; Lanning 1963; Hunt 1960; Wallace 1958, 1962, 1977; Wallace and Taylor 1978; Campbell and Campbell 1935), although there is no definitive sequence for the region. The difficulties in establishing cultural chronologies for the Mojave are a function of its enormous size and the small amount of archaeological excavations conducted there. Moreover, throughout prehistory many groups have occupied the Mojave and their territories often overlap spatially and chronologically resulting in mixed artifact deposits. Due to dry climate and capricious

geological processes, these artifacts rarely become integrated in-situ. Lacking a milieu hospitable to the preservation of cultural midden, Mojave chronologies have relied upon temporally diagnostic artifacts, such as projectile points, or upon the presence/absence of other temporal indicators, such as groundstone. Such methods are instructive, but can be limited by prehistoric occupants' concurrent use of different artifact styles, or by artifact re-use or re-sharpening, as well as researchers' mistaken diagnosis, and other factors (see Flenniken 1985; Flenniken and Raymond 1986; Flenniken and Wilke 1989). Recognizing the shortcomings of comparative temporal indicators, this study synthesizes Warren and Crabtree (1986), who have drawn upon this method to produce a commonly cited and relatively comprehensive chronology.

Paleoindian (12,000 to 10,000 BP) and Lake Mojave (10,000 to 7,000 BP) Periods. Climatic warming characterizes the transition from the Paleoindian Period to the Lake Mojave Period. This transition also marks the end of Pleistocene Epoch and ushers in the Holocene. The Paleoindian Period has been loosely defined by isolated fluted (such as Clovis) projectile points, dated by their association with similar artifacts discovered in-situ in the Great Plains (Sutton 1996:227-228). Some fluted bifaces have been associated with fossil remains of Rancholabrean mammals approximately dated to ca. 13,300-10,800 BP near China Lake in the northern Mojave Desert. The Lake Mojave Period has been associated with cultural adaptations to moist conditions, and resource allocation pointing to more lacustrine environments than previously (Bedwell 1973; Hester 1973). Artifacts that characterize this period include stemmed points, flake and core scrapers, choppers, hammerstones, and crescentics (Warren and Crabtree 1986:184). Projectile points associated with the period include the Silver Lake and Lake Mojave styles. Lake Mojave sites commonly occur on shorelines of Pleistocene lakes and streams, where geological surfaces of that epoch have been identified (Basgall and Hall 1994:69).

Pinto Period (7,000 to 4,000 BP). The Pinto Period has been largely characterized by desiccation of the Mojave. As formerly rich lacustrine environments began to disappear, the artifact record reveals more sporadic occupation of the Mojave, indicating occupants' recession to the more hospitable fringes (Warren 1984). Pinto Period sites are rare, and are characterized by surface manifestations that usually lack significant in-situ remains. Artifacts from this era include Pinto projectile points and a flake industry similar to the Lake Mojave tool complex (Warren 1984), though use of Pinto projectile points as an index artifact for the era has been disputed (see Schroth 1994). Milling stones have also occasionally been associated with sites of this period (Warren 1984).

Gypsum Period. (4,000 to 1,500 BP). A temporary return to moister conditions during the Gypsum Period is postulated to have encouraged technological diversification afforded by the relative abundance of resources (Warren 1984:419-420; Warren and Crabtree 1986:189). Lacustrine environments reappear and begin to be exploited during this era (Shutler 1961, 1968). Concurrently a more diverse artifact assemblage reflects intensified reliance on plant resources. The new artifacts include milling stones, mortars, pestles, and a proliferation of Humboldt Concave Base, Gypsum Cave, Elko Eared, and Elko Corner-notched dart points (Warren 1984; Warren and Crabtree 1986). Other artifacts include leaf-shaped projectile points, rectangular-based knives, drills, large scraper planes, choppers, hammer stones, shaft straighteners, incised stone pendants, and drilled slate tubes. The bow and arrow appears around 2,000 BP, evidenced by the presence of a smaller type of projectile point, the Rose Spring point (Rogers 1939; Shutler 1961).

Saratoga Springs Period (1,500 to 800 BP). During the Saratoga Springs Period regional cultural diversifications of Gypsum Period developments are evident within the Mojave. Basketmaker III (Anasazi) pottery appears during this period, and has been associated with turquoise mining in the eastern Mojave Desert (Warren and Crabtree 1986:191). Influences from Patayan/Yuman assemblages are apparent in the southern Mojave, and include buff and brown wares often associated with Cottonwood and Desert Side-notched projectile points (Warren 1984:423). Obsidian becomes more commonly used throughout the Mojave and characteristic artifacts of the period include milling stones, mortars, pestles, ceramics, and ornamental and ritual objects. More structured settlement patterns are evidenced by the presence of large villages, and three types of identifiable archaeological sites (major habitation, temporary camps, and processing stations) emerge (McGuire and Hall 1988). Diversity of resource exploitation continues to expand, indicating a much more generalized, somewhat less mobile subsistence strategy.

Shoshonean Period (800 BP to Contact). The Shoshonean period is the first to benefit from contact-era ethnography –as well as be subject to its inherent biases. Interviews of living informants allowed anthropologists to match artifact assemblages and particular traditions with linguistic groups, and plot them geographically (see Kroeber 1925; Gifford 1918; Strong 1929). During the Shoshonean Period continued diversification of site assemblages, and reduced Anasazi influence both coincide with the expansion of Numic (Uto-Aztecan language family) speakers across the Great Basin, Takic (Uto-Aztecan language family) speakers into southern California, and the Hopi across the Southwest (Sutton 1996). Hunting and gathering continued to diversify, and the diagnostic arrow points include desert side-notch and cottonwood triangular. Ceramics continue to proliferate, though are more common in the southern Mojave during this period (Warren and Crabtree 1986). Trade routes have become well established across the Mojave, particularly the Mojave Trail, which transported goods and news across the desert via the Mojave River, to the west of the current project. Trade in the western Mojave was more closely related to coastal groups than others.

Ethnography

The Uto-Aztecan “Serrano” people occupied the western Mojave Desert periphery. Kroeber (1925) applied the generic term “Serrano” to four groups, each with distinct territories: the Kitanemuk, Tataviam, Vanyume, and Serrano. Only one group, in the San Bernardino Mountains and West-Central Mojave Desert, ethnically claims the term Serrano. Bean and Smith (1978) indicate that the Vanyume, an obscure Takic population, was found along the Mojave River at the time of Spanish contact. The Kitanemuk lived to the north and west, while the Tataviam lived to the west. The Serrano lived mainly to the south (Bean and Smith 1978). All may have used the western Mojave area seasonally. Historical records are unclear concerning precise territory and village locations. It is doubtful that any group, except the Vanyume, actually lived in the region for several seasons yearly.

History

Historic-era California is generally divided into three periods: the Spanish or Mission Period (1769 to 1821), the Mexican or Rancho Period (1821 to 1848), and the American Period (1848 to present).

Spanish Period. The first European to pass through the project area is thought to be a Spaniard called Father Francisco Garces. Having become familiar with the area, Garces acted as a guide to Juan Bautista de Anza, who had been commissioned to lead a group across the

desert from a Spanish outpost in Arizona to set up quarters at the Mission San Gabriel in 1771 near what today is Pasadena (Beck and Haase 1974). This is the first recorded group crossing of the Mojave Desert and, according to Father Garces' journal, they camped at the headwaters of the Mojave River, one night less than a day's march from the mountains. Today, this is estimated to have been approximately 11 miles southeast of Victorville (Marenczuk 1962). Garces was followed by Alta California Governor Pedro Fages, who briefly explored the western Mojave region in 1772. Searching for San Diego Presidio deserters, Fages had traveled north through Riverside to San Bernardino, crossed over the mountains into the Mojave Desert, and then journeyed westward to the San Joaquin Valley (Beck and Haase 1974).

Mexican Period. In 1821, Mexico overthrew Spanish rule and the missions began to decline. By 1833, the Mexican government passed the Secularization Act, and the missions, reorganized as parish churches, lost their vast land holdings, and released their neophytes (Beattie and Beattie 1974).

American Period. The American Period, 1848–Present, began with the Treaty of Guadalupe Hidalgo. The Gold Rush had attracted huge numbers of American settlers and in 1850, California was accepted into the Union. The cattle industry reached its greatest prosperity during the first years of the American Period. Mexican Period land grants had created large pastoral estates in California, and demand for beef during the Gold Rush led to a cattle boom that lasted from 1849–1855. However, beginning about 1855, the demand for beef began to decline due to imports of sheep and cattle from the eastern U.S. When the beef market collapsed, many California ranchers lost their ranchos. A series of disastrous floods in 1861–1862, followed by a significant drought diminished the economic impact of local ranching. This decline combined with ubiquitous agricultural and real estate developments of the late 19th century, set the stage for diversified economic pursuits that have continued to proliferate to this day (Beattie and Beattie 1974; Cleland 1941).

PERSONNEL

David Brunzell, M.A., RPA acted as the Project Manager/Principal Investigator for the current study, and authored the technical report. Mr. Brunzell completed the cultural resources records search at the South Central Coastal Information Center (SCCIC) at California State University, Fullerton. BCR Consulting Archaeological Crew Chief Nicholas Shepetuk, B.A. and Staff Archaeological Field Technician Fabian Reyes-Martinez carried out the pedestrian field survey.

METHODS

Research

BCR Consulting staff completed an archaeological records search using SCCIC records of California State University, Fullerton. This archival research reviewed the status of all recorded historic and prehistoric cultural resources, and survey and excavation reports completed within one half-mile of the project site boundaries. Additional resources reviewed included the National Register of Historic Places (National Register), the California Register, the Built Environmental Resource Directory (BERD), and documents and inventories published by the California Office of Historic Preservation. These include the lists of California Historical Landmarks, California Points of Historical Interest, Listing of National Register Properties, and the Inventory of Historic Structures.

Field Survey

An intensive-level cultural resources field survey of the project site was conducted on June 17, 2022. The survey was conducted by walking parallel transects spaced approximately 15 meters apart across the project site. Digital photographs were taken at various points within the project site.

RESULTS

Research

Data from the South Central Coastal Information Center (SCCIC) revealed that four previous cultural resource studies have taken place, and four cultural resources have been identified within the records search radius. The project site has never been subject to a previous cultural resources assessment, and no cultural resources have been identified within its boundaries. The records search is summarized in Table A, and a complete bibliography is provided in Appendix A.

Table A. Cultural Resources and Reports Within One Half-Mile of the Project Site

USGS Quad	Cultural Resources	Studies
<i>Adelanto</i> (1993), <i>California</i>	P-36-7501: Prehistoric Lithic Scatter (1/4 Mile West) P-36-10392: Historic Refuse/Prehistoric Lithics (1/2 Mile W) P-36-26829: Prehistoric Lithic Scatter (1/4 Mile W) P-36-61240: Unspecified Prehistoric Isolate (1/4 Mile W)	SB-1479, 2751, 2795, 2796

Field Survey

During the field survey, BCR Consulting archaeologists identified no cultural resources (including historic-period or prehistoric archaeological sites, or historic-period architectural resources) within the project site boundaries. The project has been subject to minimal artificial disturbances associated with natural sheetwashing that occurs from south to north across the project site. Vegetation consists of creosote scrub and Joshua tree woodland, and afforded surface visibility of approximately 80 percent. Sediments were dominated by silty sand with poorly sorted granitic and quartz gravels.

RECOMMENDATIONS

BCR Consulting conducted a cultural resources assessment of Assessor Parcel Number 0459-432-48 in the City of Adelanto, San Bernardino County, California. No cultural resources (including historic-period or prehistoric archaeological resources, or historic-period architectural resources) or cultural resource sensitivity were identified on or near the project site. Therefore, no significant impact related to historical resources is anticipated and no further investigations are recommended unless:

- The proposed project is changed to include areas that have not been subject to this cultural resource assessment;
- Cultural materials are encountered during project activities.

The current study attempted to determine whether significant archaeological deposits were present on the proposed project site. Although none were yielded during the records search

and field survey, ground-disturbing activities have the potential to reveal buried deposits not observed on the surface. Prior to the initiation of ground-disturbing activities, field personnel should be alerted to the possibility of buried prehistoric or historic cultural deposits. In the event that field personnel encounter buried cultural materials, work in the immediate vicinity of the find should cease and a qualified archaeologist should be retained to assess the significance of the find. The qualified archaeologist shall have the authority to stop or divert construction excavation as necessary. If the qualified archaeologist finds that any cultural resources present meet eligibility requirements for listing on the California Register or the National Register of Historic Places (National Register), plans for the treatment, evaluation, and mitigation of impacts to the find will need to be developed. Prehistoric or historic cultural materials that may be encountered during ground-disturbing activities include:

- historic-period artifacts such as glass bottles and fragments, cans, nails, ceramic and pottery fragments, and other metal objects;
- historic-period structural or building foundations, walkways, cisterns, pipes, privies, and other structural elements;
- prehistoric flaked-stone artifacts and debitage (waste material), consisting of obsidian, basalt, and or cryptocrystalline silicates;
- groundstone artifacts, including mortars, pestles, and grinding slabs;
- dark, greasy soil that may be associated with charcoal, ash, bone, shell, flaked stone, groundstone, and fire affected rocks;
- human remains.

Findings were negative during the Sacred Lands File search with the NAHC. The results of the Sacred Lands File search are provided in Appendix A. The Legislature added requirements regarding tribal cultural resources for CEQA in Assembly Bill 52 (AB 52) that took effect July 1, 2015. AB52 requires consultation with California Native American tribes and consideration of tribal cultural resources in the CEQA process. By including tribal cultural resources early in the CEQA process, the legislature intended to ensure that local and Tribal governments, public agencies, and project proponents would have information available, early in the project planning process, to identify and address potential adverse impacts to tribal cultural resources. By taking this proactive approach, the legislature also intended to reduce the potential for delay and conflicts in the environmental review process. To help determine whether a project may have such an effect, the Public Resources Code requires a lead agency to consult with any California Native American tribe that requests consultation and is traditionally and culturally affiliated with the geographic area of a Proposed Project. Since the City will initiate and carry out the required AB52 Native American Consultation, the results of the consultation are not provided in this report. However, this report may be used during the consultation process, and BCR Consulting staff is available to answer questions and address concerns as necessary.

According to CEQA Guidelines, projects subject to CEQA must determine whether the project would “directly or indirectly destroy a unique paleontological resource”. The Paleontological Overview provided in Appendix B has recommended that:

The geologic units underlying this project are mapped as alluvial silt, sand and gravel from the Holocene period (Dibblee and Minch 2008). Holocene alluvial units are considered to be of high preservation value, but material found is unlikely to be fossil

material due to the relatively modern associated dates of the deposits. However, if development requires any substantial depth of disturbance, the likelihood of reaching Pleistocene alluvial sediments would increase. The Western Science Center does not have localities within the project area or within a 1 mile radius.

While the presence of any fossil material is unlikely, if excavation activity disturbs deeper sediment dating to the earliest parts of the Holocene or Late Pleistocene periods, the material would be scientifically significant. Excavation activity associated with the development of the project area is unlikely to be paleontologically sensitive, but caution during development should be observed.

If human remains are encountered during any project activities, State Health and Safety Code Section 7050.5 states that no further disturbance shall occur until the County Coroner has made a determination of origin and disposition pursuant to Public Resources Code Section 5097.98. The County Coroner must be notified of the find immediately. If the remains are determined to be prehistoric, the Coroner will notify the NAHC, which will determine and notify a Most Likely Descendant (MLD). With the permission of the landowner or his/her authorized representative, the MLD may inspect the site of the discovery. The MLD shall complete the inspection within 48 hours of notification by the NAHC

If human remains are encountered, State Health and Safety Code Section 7050.5 states that no further disturbance shall occur until the County Coroner has made a determination of origin and disposition pursuant to PRC Section 5097.98. The County Coroner must be notified of the find immediately. If the remains are determined to be prehistoric, the Coroner will notify the NAHC, which will determine and notify a Most Likely Descendant (MLD). With the permission of the landowner or his/her authorized representative, the MLD may inspect the site of the discovery. The MLD shall complete the inspection within 48 hours of notification by the NAHC.

REFERENCES

- Basgall, Mark E., and M.C. Hall
1994 Perspectives on the Early Holocene Archaeological Record of the Mojave Desert. In *Kelso Conference Papers 1987-1992*, edited by G.D. Everson and J.S. Schneider.
- Bean, Lowell John, and Charles R. Smith
1978 *California*, edited by R.F. Heizer. Handbook of North American Indians, Vol. 8, W.C. Sturtevant, general editor, Smithsonian Institution, Washington, D.C.
- Beattie, George W., and Helen P. Beattie
1974 *Heritage of the Valley: San Bernardino's First Century*. Biobooks: Oakland.
- Beck, Warren A., and Ynez D. Haase
1974 *Historical Atlas of California*. Oklahoma City: University of Oklahoma Press.
- Bedwell, S.F.
1973 *Fort Rock Basin: Prehistory and Environment*. University of Oregon Books, Eugene.
- Bettinger, Robert L., and R.E. Taylor
1974 Suggested Revisions in Archaeological Sequences of the Great Basin and Interior Southern California. *Nevada Archaeological Survey Research Papers* 3:1-26.
- Campbell, E., and W. Campbell
1935 The Pinto Basin. *Southwest Museum Papers* 9:1-51.
- City of Lancaster
2020 *History of Lancaster*. Electronic Document: <http://www.cityoflancafterca.org/index.aspx?page=218>. Accessed 5/22/20.
- Cleland, Robert Glass
1941 *The Cattle on a Thousand Hills—Southern California, 1850-80*. San Marino, California: Huntington Library.
- Colton Courier
1943 Victorville Army Air Base Talent On Radio Jan. 22. *The Colton Courier* 15 January: Page 6. Colton, California.
- Flenniken, J.J.
1985 Stone Tool Reduction Techniques as Cultural Markers. *Stone Tool Analysis: Essays in Honor of Don E. Crabtree*, edited by M.G. Plew, J.C. Woods, and M.G. Pavesic. University of New Mexico Press, Albuquerque.
- Flenniken, J.J. and A.W. Raymond
1986 Morphological Projectile Point Typology: Replication, Experimentation, and Technological Analysis. *American Antiquity* 51:603-614.
- Flenniken, J.J. and Philip J. Wilke
1989 Typology, Technology, and Chronology of Great Basin Dart Points. *American Anthropologist* 91:149-158.

Ford, Daniel

1998 *The Diary of a Bomber Pilot*. Smithsonian Institution Press. Washington D.C.

Gifford, Edward W.

1918 Clans and Moieties in Southern California. *University of California Publications in American Archaeology and Anthropology* 14(22):155-219.

Gurba, Norma H.

2005 *Images of America: Lancaster*. Arcadia Publishing. Charleston.

Gutglueck, Mark

2015a Victor Valley History 1856 – 1888. *San Bernardino County Sentinel* 11 September. San Bernardino, California.

2015b Victor Valley History 1889 – 1913. *San Bernardino County Sentinel* 29 August. San Bernardino, California.

Hester, T.R.

1973 *Chronological Ordering of Great Basin Prehistory*. Contributions of the Archaeological Research Facility 17, University of California, Berkeley.

Hunt, Alice P.

1960 *The Archaeology of the Death Valley Salt Pan, California*. University of Utah Anthropological Papers No. 47.

Jaeger, Edmund C., and Arthur C. Smith

1971 *Introduction to the Natural History of Southern California*. California Natural History Guides: 13. Los Angeles: University of California Press.

Kroeber, Alfred L.

1925 *Handbook of the Indians of California*. Bureau of American Ethnology Bulletin 78. Washington D.C.: Smithsonian Institution. Reprinted in 1976, New York: Dover.

Lambert, David

1994 *The Field Guide to Prehistoric Life*. Diagram Visual Information Ltd., New York.

Lanning, Edward P.

1963 The Archaeology of the Rose Spring Site (Iny-372). *University of California Publications in American Archaeology and Ethnology* 49(3):237-336.

Lewis Publishing Company

1889 *An Illustrated History of Los Angeles County*. Lewis Publishing Company. Chicago.

Los Angeles County Library

2015 *Antelope Valley Community History*. Electronic Resource:
<https://lacountylibrary.org/antelope-valley-local-history/>. Accessed 5/22/20.

Marenczuk, Wesley

1962 *The Story of Oro Grande*. Published by Author. Victor Valley College.

McGuire, K.R., and M.C. Hall

- 1988 *The Archaeology of Tiefert Basin, Fort Irwin, San Bernardino County, California*. Prepared for the U.S. Army Corps of Engineers, Los Angeles District.

Miller Fred K. and Jonathan C. Matti

- 2006 *Geologic Map of the San Bernardino and Santa Ana 30' x 60' Quadrangles, California*. U.S. Geological Survey, Spokane and Tucson. Reynolds, R.E.

Reynolds, R.E.

- 1988 *Paleontologic Resource Overview and Management Plan for Edwards Air Force Base, California*. San Bernardino County Museum, Redlands, California.

Rogers, M.J.

- 1939 *Early Lithic Industries of the Lower Basin of the Colorado River and Adjacent Desert Areas*. San Diego Museum Papers No. 3.

Schroth, Adella Beverly

- 1994 *The Pinto Point Controversy in the Western United States*. Unpublished PhD Dissertation, University of California, Riverside.

Shutler, Richard, Jr.

- 1961 *Lost City, Pueblo Grande de Nevada*. NV State Museum Anthropological Papers 5.
- 1968 The Great Basin Archaic. In *Prehistory in the Western United States. Contributions in Anthropology* 1(3):24-26. Edited by C. Irwin-Williams, Eastern New Mexico Univ.

Strong, William Duncan

- 1929 *Aboriginal Society in Southern California. University of California Publications in American Archaeology and Ethnology* 26(1):1-358.

Sutton, Mark Q.

- 1996 The Current Status of Archaeological Research in the Mojave Desert. *Journal of California and Great Basin Anthropology* 18(2):221-257.

United States Geological Survey

- 1993 *Adelanto, California* 7.5-minute topographic quadrangle map.

Van Devender, Larry M., Gary L. Shumway, and Russell D. Hartill

- 1987 *Desert Fever: An Overview of Mining in the California Desert*. Living West Press, Canoga Park, California.

Wallace, William J.

- 1958 Archaeological Investigation in Death Valley National Monument. *University of California Archaeological Survey Reports* 42:7-22.
- 1962 Prehistoric Cultural Development in the Southern California Deserts. *American Antiquity* 28(2):172-180.
- 1977 A Half Century of Death Valley Archaeology. *The Journal of California Anthropology* 4(2):249-258.

Wallace, William J., and Edith S. Taylor

1978 *Ancient Peoples and Cultures of Death Valley National Monument*. Acoma Books, Ramona, California.

Wallenfeldt, Jeff

2020 *Victorville California, United States*. Encyclopedia Britannica, Inc. Edinburgh, Scotland.

Warren, Claude N.

1984 The Desert Region. In *California Archaeology*, by M. Moratto, contributions by D.A. Fredrickson, C. Raven, and C.N. Warren, pp. 339–430. Academic Press, Orlando, Florida.

Warren, Claude N., and R.H. Crabtree

1986 The Prehistory of the Southwestern Great Basin. In *Handbook of the North American Indians, Vol. 11, Great Basin*, edited by W.L. d'Azevedo, pp.183-193. W.C. Sturtevant, General Editor. Smithsonian Institution, Washington D.C.

Weiser, Kathy

2017 *Legends of America*. Electronic Document: legendsofamerica.com/ah-homestead/. Accessed 11/21/17.

Williams, Patricia, Leah Messinger, Sarah Johnson

2008 *Habitats Alive! An Ecological Guide to California's Diverse Habitats*. California Institute for Biodiversity, Claremont, California.

APPENDIX A

CULTURAL RESOURCES RECORDS SEARCH BIBLIOGRAPHY

Report List

MJS2201

Report No.	Other IDs	Year	Author(s)	Title	Affiliation	Resources
SB-01479	NADB-R - 1061479; Voided - 85-1.1	1985	DAMES & MOORE	MEAD/MCCULLOUGH-VICTORVILLE/ADELANTO TRANSMISSION PROJECT TECHNICAL REPORT: VOLUME IV, CULTURAL RESOURCES	DAMES & MOORE	36-005331, 36-005332, 36-005430, 36-023426
SB-02751	NADB-R - 1062751	1993	SINGER, CLAY A., JOHN E. ATTWOOD, and SHELLEY MARIE GOMES	CULTURAL RESOURCES SURVEY AND IMPACT ASSESSMENT FOR A 10 ACRE PROPERTY (TENTATIVE PARCEL MAP NO.13916) AT 15575 SHERRI LANE NEAR THE CITY OF APPLE VALLEY, SAN BERNARDINO COUNTY, CA	C.A.SINGER AND ASSOCIATES	
SB-02795	NADB-R - 1062795	1991	HAMPSON, R. PAUL, JAMES J. SCHMIDT, AND JUNE A. SCHMIDT	CULTURAL RESOURCE INVESTIGATION: CAJON PIPELINE PROJECT	GREENWOOD & ASSOCIATES	36-002910, 36-004252, 36-004253, 36-004255, 36-004268, 36-004271, 36-004272, 36-004411, 36-004418, 36-005361, 36-005362, 36-005568, 36-006793, 36-007076, 36-007077, 36-007078, 36-007079, 36-007080, 36-007081, 36-007082, 36-007084, 36-007085, 36-007086, 36-007087, 36-007088, 36-007089, 36-007090, 36-007091, 36-007092, 36-007093, 36-007094, 36-007095, 36-007096
SB-02796	NADB-R - 1062796	1993	MCKENNA, JEANETTE A.	CULTURAL RESOURCES INVESTIGATIONS, SITE INVENTORY AND EVALUATIONS, THE CAJON PIPELINE CORRIDOR, LOS ANGELES AND SAN BERNARDINO COUNTIES	MCKENNA ET AL	36-002257, 36-002910, 36-004252, 36-004253, 36-004255, 36-004268, 36-004271, 36-004272, 36-004411, 36-004418, 36-005288, 36-005361, 36-005362, 36-005568, 36-006509, 36-006516, 36-006699, 36-006793, 36-006810, 36-006847, 36-007076, 36-007077, 36-007078, 36-007079, 36-007080, 36-007081, 36-007082, 36-007084, 36-007085, 36-007086, 36-007087, 36-007088, 36-007089, 36-007090, 36-007093, 36-007094, 36-007095, 36-007282, 36-007294, 36-007295, 36-007296

Report List

MJS2201

Report No.	Other IDs	Year	Author(s)	Title	Affiliation	Resources
SB-03070	NADB-R - 1063070	1995	YORK, ANDREW, W.G. SPAULDING, G. DAVIS, D. POWERS, and T. WAHOFF	CLASS III CULTURAL RESOURCES INVENTORY FOR LOS ANGELES DEPARTMENT OF WATER AND POWER MEAD TO ADELANTO TRANSMISSION LINE PROJECT: MT GENERAL, KRAMER AND ADELANTO DIVISIONS.	DAMES & MOORE	36-000276, 36-000403, 36-001221, 36-001607, 36-002071, 36-002072, 36-002257, 36-004022, 36-004024, 36-005331, 36-005332, 36-005454, 36-006147, 36-006148, 36-006343, 36-006346, 36-006347, 36-006348, 36-006570, 36-006571, 36-006572, 36-006693, 36-006733, 36-006734, 36-006735, 36-006873, 36-006874, 36-006876, 36-007015, 36-007084, 36-007085, 36-007086, 36-007087, 36-007088, 36-007089, 36-007090, 36-007421, 36-007422, 36-007423, 36-007424, 36-007425, 36-007427, 36-007428, 36-007429, 36-007430, 36-007432, 36-007541, 36-007542, 36-007543, 36-007544, 36-007545, 36-007546, 36-007547, 36-007548, 36-007549, 36-007550, 36-007551, 36-007552, 36-007553, 36-007554, 36-007555, 36-007556, 36-007557, 36-007558, 36-007559, 36-007560, 36-007561, 36-007562, 36-007665, 36-007666, 36-007667, 36-007668, 36-007669, 36-007670, 36-007671, 36-007672, 36-007673, 36-007674, 36-007681, 36-007682, 36-007683, 36-007684, 36-007685, 36-007687, 36-007690
SB-05500						
SB-06967		2011	Puckett, Heather R.	PROPOSED WIRELESS DEVICE MONOPOLE AND ASSOCIATED EQUIPMENT; CAUGHLIN SITE, 17235 RACCOON AVENUE, ADELANTO, CALIFORNIA, 92301	Tetra Tech, Inc	
SB-07982		2013	Dietler, Sara, Elizabeth Denniston, and Steven Treffers	Cultural Resources Impact Mitigation Analysis for the Adelanto North 2035 Sustainable Community Plan, City of San Bernardino County, California	SWCA Environmental Consultants Pasadena Office	

Resource List

MJS2201

Primary No.	Trinomial	Other IDs	Type	Age	Attribute codes	Recorded by	Reports
P-36-007501	CA-SBR-007501	TB-S-25			AP02	1992 (PIGNIOLO ET AL)	SB-02852
P-36-010392	CA-SBR-010392/H	Resource Name - TS #1	Site	Prehistoric, Historic	AH04; AP02	2001 (Richard Cerreto, Gallegos & Asst); 2011 (K. Chmiel, ICF); 2015	SB-04435, SB- 08163, SB-08164, SB-08165, SB- 08166, SB-08477, SB-08478
P-36-026829		Resource Name - HDC-ISO-32	Other	Prehistoric	AP02	2013 (Robin D. Hoffman, ICF International)	
P-36-061240		Resource Name - A-5; flake; Other - IA1583-6; Other - SBCM-3289	Other	Prehistoric	AP16	1976 (WHITLEY)	

APPENDIX B

NATIVE AMERICAN HERITAGE COMMISSION CORRESPONDENCE

NATIVE AMERICAN HERITAGE COMMISSION

June 1, 2022

Joseph Orozco
BCR Consulting LLC

Via Email to: bcrllc2008@gmail.com

Re: Assessor Parcel Number 0459-432-48 Project, San Bernardino County

Dear Mr. Orozco:

A record search of the Native American Heritage Commission (NAHC) Sacred Lands File (SLF) was completed for the information you have submitted for the above referenced project. The results were negative. However, the absence of specific site information in the SLF does not indicate the absence of cultural resources in any project area. Other sources of cultural resources should also be contacted for information regarding known and recorded sites.

Attached is a list of Native American tribes who may also have knowledge of cultural resources in the project area. This list should provide a starting place in locating areas of potential adverse impact within the proposed project area. I suggest you contact all of those indicated; if they cannot supply information, they might recommend others with specific knowledge. By contacting all those listed, your organization will be better able to respond to claims of failure to consult with the appropriate tribe. If a response has not been received within two weeks of notification, the Commission requests that you follow-up with a telephone call or email to ensure that the project information has been received.

If you receive notification of change of addresses and phone numbers from tribes, please notify me. With your assistance, we can assure that our lists contain current information.

If you have any questions or need additional information, please contact me at my email address: Pricilla.Torres-Fuentes@nahc.ca.gov.

Sincerely,

Pricilla Torres-Fuentes

Pricilla Torres-Fuentes
Cultural Resources Analyst

Attachment



CHAIRPERSON
Laura Miranda
Luiseño

VICE CHAIRPERSON
Reginald Pagaling
Chumash

PARLIAMENTARIAN
Russell Attebery
Karuk

SECRETARY
Sara Dutschke
Miwok

COMMISSIONER
William Mungary
Paiute/White Mountain
Apache

COMMISSIONER
Isaac Bojorquez
Ohlone-Costanoan

COMMISSIONER
Buffy McQuillen
Yokayo Pomo, Yuki,
Nomlaki

COMMISSIONER
Wayne Nelson
Luiseño

COMMISSIONER
Stanley Rodriguez
Kumeyaay

EXECUTIVE SECRETARY
Raymond C. Hitchcock
Miwok/Nisenan

NAHC HEADQUARTERS
1550 Harbor Boulevard
Suite 100
West Sacramento,
California 95691
(916) 373-3710
nahc@nahc.ca.gov

**Native American Heritage Commission
Native American Contact List
San Bernardino County
6/1/2022**

Kern Valley Indian Community

Julie Turner, Secretary
P.O. Box 1010
Lake Isabella, CA, 93240
Phone: (661) 340 - 0032

Kawaiisu
Tubatulabal
Koso

**Quechan Tribe of the Fort Yuma
Reservation**

Jill McCormick, Historic
Preservation Officer
P.O. Box 1899
Yuma, AZ, 85366
Phone: (760) 572 - 2423
historicpreservation@quechantribe.com

Quechan

Kern Valley Indian Community

Robert Robinson, Chairperson
P.O. Box 1010
Lake Isabella, CA, 93240
Phone: (760) 378 - 2915
bbutterbredt@gmail.com

Kawaiisu
Tubatulabal
Koso

**San Fernando Band of Mission
Indians**

Donna Yocum, Chairperson
P.O. Box 221838
Newhall, CA, 91322
Phone: (503) 539 - 0933
Fax: (503) 574-3308
ddyocum@comcast.net

Kitanemuk
Vanyume
Tataviam

Kern Valley Indian Community

Brandy Kendricks,
30741 Foxridge Court
Tehachapi, CA, 93561
Phone: (661) 821 - 1733
krazykendricks@hotmail.com

Kawaiisu
Tubatulabal
Koso

**San Manuel Band of Mission
Indians**

Jessica Mauck, Director of
Cultural Resources
26569 Community Center Drive
Highland, CA, 92346
Phone: (909) 864 - 8933
Jessica.Mauck@sanmanuel-nsn.gov

Serrano

**Morongo Band of Mission
Indians**

Robert Martin, Chairperson
12700 Pumarra Road
Banning, CA, 92220
Phone: (951) 755 - 5110
Fax: (951) 755-5177
abrierty@morongo-nsn.gov

Cahuilla
Serrano

**Serrano Nation of Mission
Indians**

Mark Cochrane, Co-Chairperson
P. O. Box 343
Patton, CA, 92369
Phone: (909) 528 - 9032
serranonation1@gmail.com

Serrano

**Morongo Band of Mission
Indians**

Ann Brierty, THPO
12700 Pumarra Road
Banning, CA, 92220
Phone: (951) 755 - 5259
Fax: (951) 572-6004
abrierty@morongo-nsn.gov

Cahuilla
Serrano

**Serrano Nation of Mission
Indians**

Wayne Walker, Co-Chairperson
P. O. Box 343
Patton, CA, 92369
Phone: (253) 370 - 0167
serranonation1@gmail.com

Serrano

**Quechan Tribe of the Fort Yuma
Reservation**

Manfred Scott, Acting Chairman
Kw'ts'an Cultural Committee
P.O. Box 1899
Yuma, AZ, 85366
Phone: (928) 750 - 2516
scottmanfred@yahoo.com

Quechan

This list is current only as of the date of this document. Distribution of this list does not relieve any person of statutory responsibility as defined in Section 7050.5 of the Health and Safety Code, Section 5097.94 of the Public Resource Section 5097.98 of the Public Resources Code.

This list is only applicable for contacting local Native Americans with regard to cultural resources assessment for the proposed Assessor Parcel Number 0459-432-48 Project, San Bernardino County.

**Native American Heritage Commission
Native American Contact List
San Bernardino County
6/1/2022**

***Twenty-Nine Palms Band of
Mission Indians***

Darrell Mike, Chairperson
46-200 Harrison Place Chemehuevi
Coachella, CA, 92236
Phone: (760) 863 - 2444
Fax: (760) 863-2449
29chairman@29palmsbomi-
nsn.gov

***Twenty-Nine Palms Band of
Mission Indians***

Anthony Madrigal, Tribal Historic
Preservation Officer
46-200 Harrison Place Chemehuevi
Coachella, CA, 92236
Phone: (760) 775 - 3259
amadrigal@29palmsbomi-nsn.gov

This list is current only as of the date of this document. Distribution of this list does not relieve any person of statutory responsibility as defined in Section 7050.5 of the Health and Safety Code, Section 5097.94 of the Public Resource Section 5097.98 of the Public Resources Code.

This list is only applicable for contacting local Native Americans with regard to cultural resources assessment for the proposed Assessor Parcel Number 0459-432-48 Project, San Bernardino County.

APPENDIX C
PALEONTOLOGICAL RESOURCES OVERVIEW



May 20, 2022

BCR Consulting, LLC
Joseph Orozco
505 W. 8th St.
Claremont, CA 91711

Dear Mr. Orozco,

This letter presents the results of a record search conducted for the Assessor Parcel Number 0459-432-48 Project located in the City of Adelanto, San Bernardino County, California. The project site is located south of Air Expressway, north of Joshua Avenue, west of Raccoon Road, and east of Muskrat Avenue in Township 6 North, Range 5 West, Section 31 on the *Adelanto*, CA USGS 7.5 minute quadrangle.

The geologic units underlying this project are mapped as alluvial silt, sand and gravel from the Holocene period (Dibblee and Minch 2008). Holocene alluvial units are considered to be of high preservation value, but material found is unlikely to be fossil material due to the relatively modern associated dates of the deposits. However, if development requires any substantial depth of disturbance, the likelihood of reaching Pleistocene alluvial sediments would increase. The Western Science Center does not have localities within the project area or within a 1 mile radius.

While the presence of any fossil material is unlikely, if excavation activity disturbs deeper sediment dating to the earliest parts of the Holocene or Late Pleistocene periods, the material would be scientifically significant. Excavation activity associated with the development of the project area is unlikely to be paleontologically sensitive, but caution during development should be observed.

If you have any questions, or would like further information, please feel free to contact me at bstoneburg@westerncentermuseum.org.

Sincerely,




A handwritten signature in black ink, appearing to read 'Brittney Stoneburg', written in a cursive style.

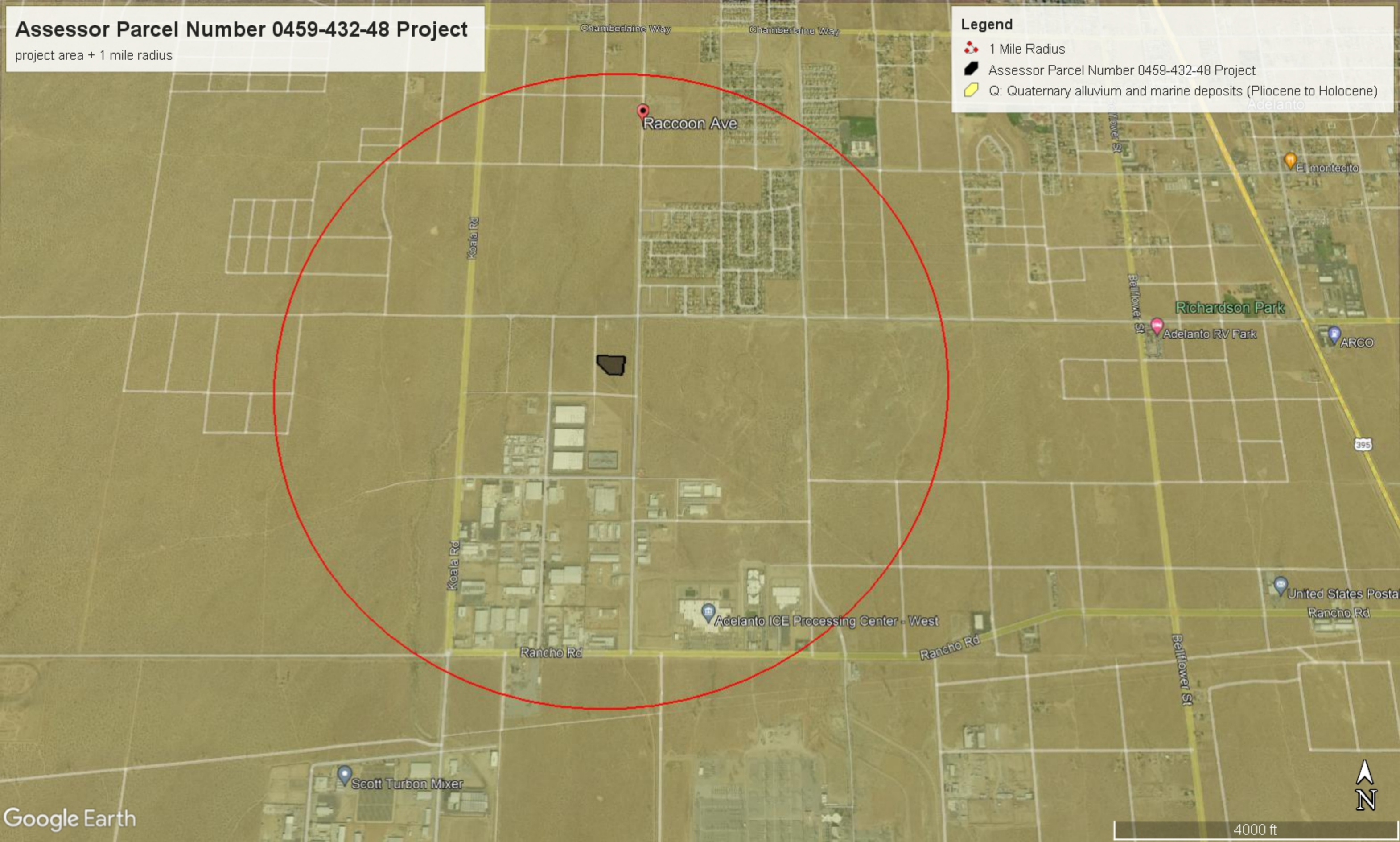
Brittney Elizabeth Stoneburg
Collections Technician

Assessor Parcel Number 0459-432-48 Project

project area + 1 mile radius

Legend

-  1 Mile Radius
-  Assessor Parcel Number 0459-432-48 Project
-  Q: Quaternary alluvium and marine deposits (Pliocene to Holocene)



APPENDIX D
PROJECT PHOTOGRAPHS

