

ARBORIST REPORT

**Tree Inventory
1975 Cambrianna Drive
San Jose, California
(APN: 414-21-062)**

Prepared for:
**Savage Land Design
680 Langsdorf Drive
Fullerton, CA 92831
michael@savagelanddesign.com**

Prepared by:
**Dr. Kent Julin
ISA Certified Arborist
California Professional Forester
ARBORSCIENCE, LLC**

February 28, 2023

ASSIGNMENT

Savage Land Design hired **ARBORSCIENCE, LLC** to inventory trees growing at 1975 Cambrianna Drive in San Jose. We inspected the trees on February 14, 2023.

SCOPE OF WORK AND LIMITATIONS

We evaluated Trees 1-42 using a Level 2 Basic Assessment following International Society of Arboriculture Best Management Practices for Tree Risk Assessment. Due to property access limitations (school tenant denied entry). Trees 43-59 were evaluated using a Level 1 Assessment and were not tagged. This level of assessment includes a 360-degree, ground-based visual inspection of the tree crown, trunk, trunk flare, above-ground roots and site conditions around the tree in relation to targets including property improvements and areas used by people. In addition, we used a dead-blow hammer to sound for internal trunk decay or hollows. This assessment is based on the circumstances and observations, as they existed at the time of the site inspection. Opinions in this assessment are given based on observations made and using generally accepted professional judgment, however, because trees are living organisms and subject to change, damage and disease, the results, observations, recommendations, and analysis as set out in this assessment are valid only at the date any such observations and analysis took place and no guarantee, warranty, representation or opinion is offered or made by Arborscience as to the length of the validity of the results, observations, recommendations and analysis contained within this assessment. As a result the client shall not rely upon this Assessment, save and except for representing the circumstances and observations, analysis and recommendations that were made as at the date of such inspections. We recommend that the trees discussed in this inventory be re-assessed periodically, if retained.

SITE DESCRIPTION AND CONTEXT

The 59 subject trees grow on a 9.72-acre, public-school property at 1975 Cambrianna Drive (APN: 414-21-062) that is leased by several educational groups. The subject trees include a diverse group of planted ornamentals that are listed in Table 1 and plotted on the Tree Inventory map (Attached). The City of San Jose defines an ordinance-size tree as one with a single main trunk of 38 inches or more in circumference (12" in diameter) at 4 1/2 feet above ground, or with multi-trunks that have combined measurements of each trunk circumference, at 4 1/2 feet above ground, that add up to 38 inches or more in circumference. The property supports 46 Ordinance-sized trees.

Sincerely,
ARBORSCIENCE, LLC



Dr. Kent R. Julin
ISA Certified Arborist #WE-8733A
ISA Tree Risk Assessor Qualified

Table 1: Subject trees at 1975 Cambrianna Drive, San Jose.

Tree No.	Common Name	Species Name	DBH (in.)	CIRC (in.)	Status	Condition	Field Notes
1	Crepe myrtle	<i>Lagerstroemia indica</i>	6	19	-	Good	Canker at base
2	White birch	<i>Betula pendula</i>	2, 5	22	-	Poor	-
3	Coast live oak	<i>Quercus agrifolia</i>	10 (1-3)	63	Ordinance	Good	-
4	London plane tree	<i>Platanus x acerifolia</i>	16	50	Ordinance	Good	-
5	Coast live oak	<i>Quercus agrifolia</i>	15	47	Ordinance	Fair	Crossing limb, root collar buried
6	Coast live oak	<i>Quercus agrifolia</i>	16	50	Ordinance	Good	-
7	Coast live oak	<i>Quercus agrifolia</i>	46	145	Ordinance	Fair	Good vigor, extensive internal decay (hollow trunk), girdling roots
8	Coast live oak	<i>Quercus agrifolia</i>	20, 16, 14	157	Ordinance	Fair	Health good, acute angle trunk attachment
9	Coast live oak	<i>Quercus agrifolia</i>	24	75	Ordinance	Good	-
10	Coast live oak	<i>Quercus agrifolia</i>	20	63	Ordinance	Good	-
11	Coast live oak	<i>Quercus agrifolia</i>	37	116	Ordinance	Fair	40% foliage missing/dead
12	Japanese zelkova	<i>Zelkova serrata</i>	14	44	Ordinance	Fair	-
13	Japanese zelkova	<i>Zelkova serrata</i>	16	50	Ordinance	Fair	-
14	Japanese zelkova	<i>Zelkova serrata</i>	12	38	Ordinance	Fair	-
15	Japanese zelkova	<i>Zelkova serrata</i>	15	47	-	Fair	-
16	Japanese zelkova	<i>Zelkova serrata</i>	16	50	Ordinance	Fair	-
17	Japanese zelkova	<i>Zelkova serrata</i>	20	63	Ordinance	Poor	High failure probability, acute angle trunk attachment
18	Japanese zelkova	<i>Zelkova serrata</i>	20	63	Ordinance	Fair	-
19	Japanese zelkova	<i>Zelkova serrata</i>	15	47	Ordinance	Fair	-
20	Japanese zelkova	<i>Zelkova serrata</i>	16	50	Ordinance	Fair	-
21	Japanese zelkova	<i>Zelkova serrata</i>	15	47	Ordinance	Fair	-
22	Japanese zelkova	<i>Zelkova serrata</i>	14	44	Ordinance	Fair	-
23	Japanese zelkova	<i>Zelkova serrata</i>	12	38	Ordinance	Fair	-
24	Japanese zelkova	<i>Zelkova serrata</i>	23	72	Ordinance	Fair	-

Tree No.	Common Name	Species Name	DBH (in.)	CIRC (in.)	Status	Condition	Field Notes
25	Japanese zelkova	<i>Zelkova serrata</i>	14	44	Ordinance	Fair	-
26	Japanese zelkova	<i>Zelkova serrata</i>	16	50	Ordinance	Fair	-
27	Japanese zelkova	<i>Zelkova serrata</i>	16	50	Ordinance	Fair	-
28	Japanese zelkova	<i>Zelkova serrata</i>	16	50	Ordinance	Fair	-
29	Japanese zelkova	<i>Zelkova serrata</i>	13	41	Ordinance	Poor	Extensive lower trunk decay
30	Japanese zelkova	<i>Zelkova serrata</i>	15	47	Ordinance	Fair	-
31	Japanese zelkova	<i>Zelkova serrata</i>	18	57	Ordinance	Fair	-
32	Coast live oak	<i>Quercus agrifolia</i>	22	69	Ordinance	Good	-
33	Atlas cedar	<i>Cedrus atlantica</i>	29	91	Ordinance	Good	-
34	Atlas cedar	<i>Cedrus atlantica</i>	22	69	Ordinance	Good	-
35	Atlas cedar	<i>Cedrus atlantica</i>	28	88	Ordinance	Good	-
36	Hollywood juniper	<i>Juniperus chinensis</i>	12, 7	60	Ordinance	Good	-
37	Hollywood juniper	<i>Juniperus chinensis</i>	9	28	-	Good	-
38	Green ash	<i>Fraxinus pennsylvanica</i>	14, 16	94	Ordinance	Fair	Large limb tear out
39	Willow sp.	<i>Salix sp.</i>	26	82	Ordinance	Fair	Witches' brooms
40	Callery pear	<i>Pyrus calleryana</i>	16	50	Ordinance	Good	-
41	Green ash	<i>Fraxinus pennsylvanica</i>	14	44	Ordinance	Good	-
42	Purple-leaf plum	<i>Prunus cerasifera</i>	5, 6, 6	53	Ordinance	Fair	-
43	Camphor	<i>Cinnamomum camphora</i>	16	50	Ordinance	Fair	-
44	Coast live oak	<i>Quercus agrifolia</i>	6	19	-	Fair	-
45	Coast live oak	<i>Quercus agrifolia</i>	4	13	-	Fair	-
46	Coast live oak	<i>Quercus agrifolia</i>	4	13	-	Fair	-
47	Camphor	<i>Cinnamomum camphora</i>	20	63	Ordinance	Good	-
48	Camphor	<i>Cinnamomum camphora</i>	24	75	Ordinance	Good	-
49	Callery pear	<i>Pyrus calleryana</i>	16	50	Ordinance	Good	-
50	Callery pear	<i>Pyrus calleryana</i>	16	50	Ordinance	Good	-

Tree No.	Common Name	Species Name	DBH (in.)	CIRC (in.)	Status	Condition	Field Notes
51	Coast redwood	<i>Sequoia sempervirens</i>	30	94	Ordinance	Good	-
52	London plane tree	<i>Platanus x acerifolia</i>	19	60	Ordinance	Good	-
53	London plane tree	<i>Platanus x acerifolia</i>	7	22	-	Good	-
54	London plane tree	<i>Platanus x acerifolia</i>	8	25	-	Good	-
55	London plane tree	<i>Platanus x acerifolia</i>	8	25	-	Good	-
56	London plane tree	<i>Platanus x acerifolia</i>	7	22	-	Good	-
57	London plane tree	<i>Platanus x acerifolia</i>	11	35	-	Good	-
58	London plane tree	<i>Platanus x acerifolia</i>	11	35	-	Good	-
59	London plane tree	<i>Platanus x acerifolia</i>	12	38	Ordinance	Good	-

Table Notes:

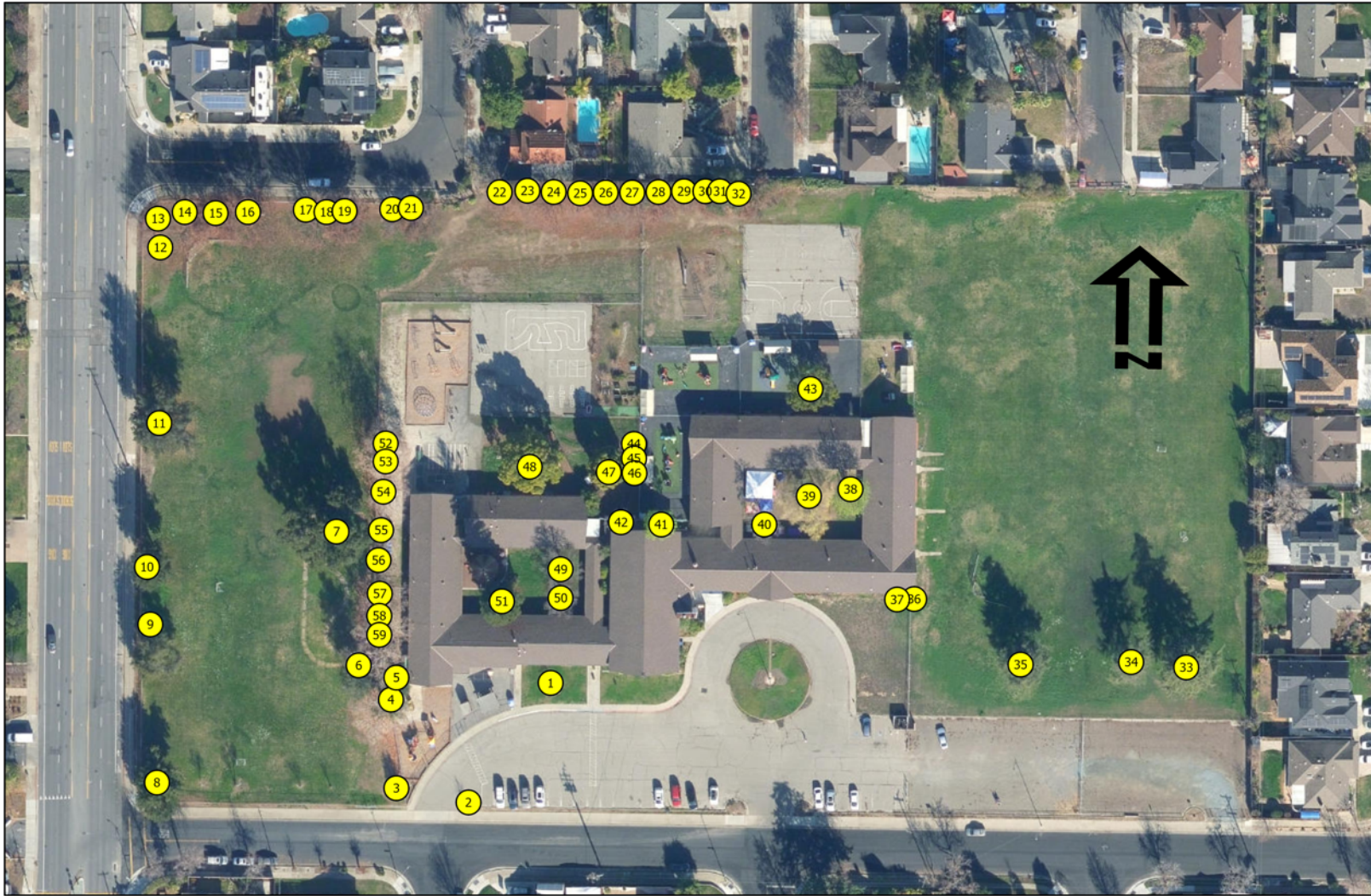
DBH: Trunk diameter at breast height measured 54" above grade.

CIRC: Trunk circumference at breast height measured 54" above grade.

Status: Trees >12" DBH are considered ordinance-sized trees on private property in San Jose

Condition:

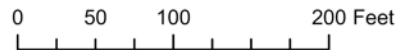
- Poor: declining health and/or significant or extensive defects that cannot be corrected
- Fair: moderate vigor, some dieback or thinning of crown, moderate structural defects that would require ongoing maintenance
- Good: healthy and vigorous, with good form or minor structural defects that can be corrected.



ARBORSCIENCE, LLC
Sound Tree Advice

Legend

 Subject Trees by Number



TREE INVENTORY MAP
1975 CAMBRIANNA DRIVE
SAN JOSE, CALIFORNIA