



Rebecca Turner
Calaveras County
County Clerk-Recorder
891 Mountain Ranch Road
San Andreas, CA 95249
(209) 754-6372
<https://clerkrecorder.calaverasgov.us/>

Receipt: 24-4618

Product	Name	Extended
FISH	FISH AND WILDLIFE FILING	\$50.00
	# Pages	4
	Document #	05-2024-024
	Document Info:	EAST BAY MUNICIPAL UTILITY DISTRICT
	Filing Type	NOE
	No F & W Fee	false
	File Endorsed Label	3
Total		\$50.00
Tender (Check)		\$50.00
Paid By	EBMUD	
Check #	200050579	

RECEIVED
MAY 31 2024
Office of the Secretary

THANK YOU. PLEASE KEEP FOR REFERENCE



NOTICE OF EXEMPTION

TO:
Calaveras County, Clerk Recorder
891 Mountain Ranch Road
San Andreas, CA 95249

FROM: (LEAD AGENCY)
EAST BAY MUNICIPAL UTILITY DISTRICT
Office of the Secretary - (510) 287-0404
375 Eleventh Street, MS 806
Oakland, CA 94607-4240

- Lead Agency is the Project Applicant
- Lead Agency is Public Agency Approving Project
- Lead Agency is Carrying Out Project

PROJECT INFORMATION

1. **TITLE:** Pardee Dam Powerline and Switchgear Safety Improvements Project
2. **LOCATION:** *(City, County, and specific location)*
3535 Sandretto Road, Valley View, Calaveras County
3. **DESCRIPTION:** Replacement and upgrade of current existing 7.2kV overhead powerline wooden poles to above ground conduit through the Pardee Dam Gallery then underground conduits between Pardee Powerhouse and South Spillway, two steel poles with overhead across the South Spillway, then underground conduits through Camp Pardee to Pardee Chemical Plant. See attachment A.

MAY 31 2024

(ENDORSED)
FILED

Office of the Secretary

EXEMPTION FINDING (Check one)

This project is exempt from CEQA because:

1. Activity is not a project
2. Activity is Ministerial (Sec.21080(b)(1); Guideline 15268)
3. Activity is a Declared Emergency (Sec.21080(b)(3); Guideline 15269(a))
4. Activity is an Emergency Project (Sec.21080(b)(4); Guideline 15269(b)(c))
5. Activity is Categorically Exempt Under Guideline 15302, 15304, 15311
6. Activity is Statutorily Exempt Under Guideline 15282 (k)
7. Reasons why project is exempt: Under Section 15302, replacement or reconstruction of existing structures and facilities will have substantially the same purpose and capacity as the structure replaced are categorically exempt. Under 15304, grading on land with a slope less than 10 percent, and minor trenching and backfilling are categorically exempt. Under 15311, construction of accessory structures are exempt. Installation of pipelines under one mile in length in public street, highway, or any other public right of way are statutorily exempt under 15282 (k).

County of Calaveras
 Rebecca Turner
 County Clerk-Recorder
05-2024-024
 05/29/2024

[Signature]
 ssimpson, Deputy Clerk

APPROVAL BY INITIATING UNIT: Water Treatment Plant Improvements

5/3/2024

Elaine Hornig

Michael J. Hartlaub

1. DATE PREPARED

2. PREPARED BY (Initial)

3. REVIEWED BY (Unit Supv. Initial)

Serge Terentieff

4. RECOMMENDED BY (Division/Section Manager)

Elaine Hornig

502

Assistant Engineer

510-287-0250

5. CONTACT PERSON

MAIL SLOT #

TITLE

PHONE

NOTICE OF EXEMPTION APPROVED FOR FILING WITH THE COUNTY CLERK

May 8, 2024

DATE

Olujimi Yoloye

DEPARTMENT DIRECTOR

May 22, 2024

DATE FORWARDED TO COUNTY CLERK

Rischa S. Cole

SECRETARY OF THE DISTRICT

ATTACHMENT A

Pardee Dam Powerline and Switchgear Safety Improvements Project

Project Summary

East Bay Municipal Utility District (EBMUD) plans to complete improvements on the 7.2kV powerline located between Pardee Powerhouse and Pardee Chemical Plant in Calaveras County near Pardee Reservoir. Replacement of the aging infrastructure will mitigate wildfire risk and allow continuous operations. Improvements consist of upgrading circuit breakers, switchgear, replacing existing wood poles with above ground conduits that follow existing conduit alignment from the powerhouse to the Dam Gallery, a transition from above ground conduit to underground conduit towards the South Spillway, an overhead pole-mounted powerline spanning across the south spillway, a transition from overhead to underground conduit south of the spillway to Camp Pardee and the Chemical Plant, installing arc-fault protection devices, and improving access behind the powerhouse facility.

Purpose/Justification

EBMUD is currently completing improvements at Pardee Chemical Plant in order to protect raw water aqueducts from corrosion by treating the raw water to increase the calcium carbonate and reduce the pH. The Pardee Powerhouse has a name plate capacity of 23.6 KW. The current electrical infrastructure spans from the powerhouse to Camp Pardee to the Chemical Plant and existing medium voltage overhead powerline is undersized for power and subject to shutoffs from Public Safety Power Shutoff (PSPS) events. This project will include replacement of the aging infrastructure to mitigate wildfire risk and allow the powerline to continue operations during PSPS events.

Location/Site Characteristics

The 7.2kV powerline extends from Pardee Powerhouse, through Camp Pardee, to Pardee Chemical Plant in Calaveras County near Pardee Reservoir. See Figure 1 for the Project Site Location and proposed alignment.

Regulatory Approvals

All work will be on EBMUD property. Encroachment permits are not required since there is no work within the public right-of-way. Any necessary approval from the regulatory agencies will be obtained to complete the Project.

EBMUD Practices and Procedures

Standard construction environmental and safety practices applicable to all EBMUD construction projects have been incorporated into the Project. These standard practices minimize impacts to the public resulting from EBMUD construction projects.

This Project is not within the boundaries of any Natural Community Conservations Plans within Calaveras County. Two Special Species of Concern are within the Project area, the valley

elderberry longhorn beetle and osprey. The valley elderberry longhorn beetle and its habitat, elderberry bushes, are covered under EBMUD's Safe Harbor Agreement (SHA) with US Fish and Wildlife Service. The SHA allows the taking of elderberry bush habitat with proper notification. Osprey have historically nested within the Project boundary. Work will occur outside of the February through September nesting season where possible to avoid disturbance to the nests.

Schedule

The planning and design phase scope of work, including completion of the studies and technical memorandums is anticipated to be completed in approximately 10 months, with several months for bid and award. Actual construction is anticipated to take four to six months with a few weeks of startup and testing and completed by Spring 2027. Pre-purchase of equipment with long lead times (up to 100 weeks) will be necessary during design in order to meet the construction deadline of Spring 2027.

Operational Considerations

Periodic outages of the hydropower system would be needed to implement improvements.

Public Considerations

Standard construction environmental and safety practices applicable to all EBMUD construction projects have been incorporated into the Project. These standard practices minimize impacts to the public resulting from EBMUD construction projects.

Figures

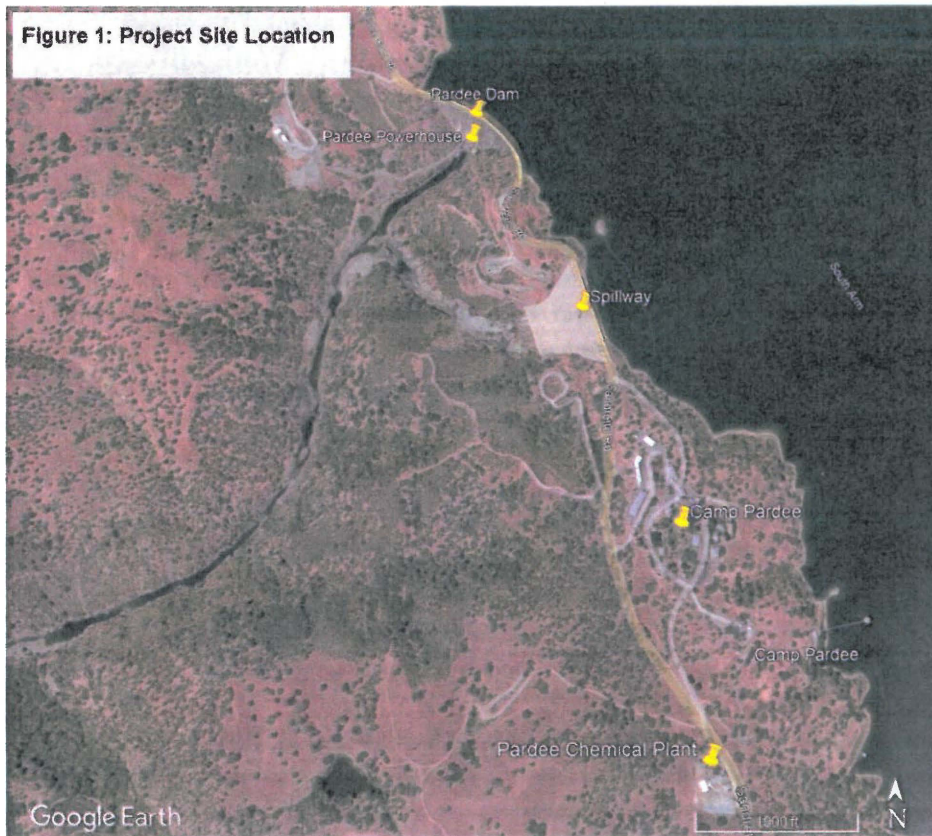


Figure 2: Pardee Powerline Alignment



END OF ATTACHMENT A