



## Community and Economic Development Planning Division

Jamie Bax  
Director

- 200 W. 4<sup>th</sup> Street
- Suite 3100
- Madera, CA 93637
- (559) 675-7821
- FAX (559) 675-6573
- TDD (559) 675-8970
- mc\_planning@maderacounty.com

### NOTICE OF INTENT TO ADOPT MITIGATED NEGATIVE DECLARATION 2024-07

This notice is to inform the public and interested agencies that in accordance with the California Environmental Quality Act (CEQA), the County of Madera is circulating Initial Study/Mitigated Negative Declaration (MND) 2024-07 for public comment.

**Project/Location:** The property is located on the north side of Avenue 7, approximately 0.8 miles east from the intersection with Firebaugh Boulevard, (No Situs), Madera.

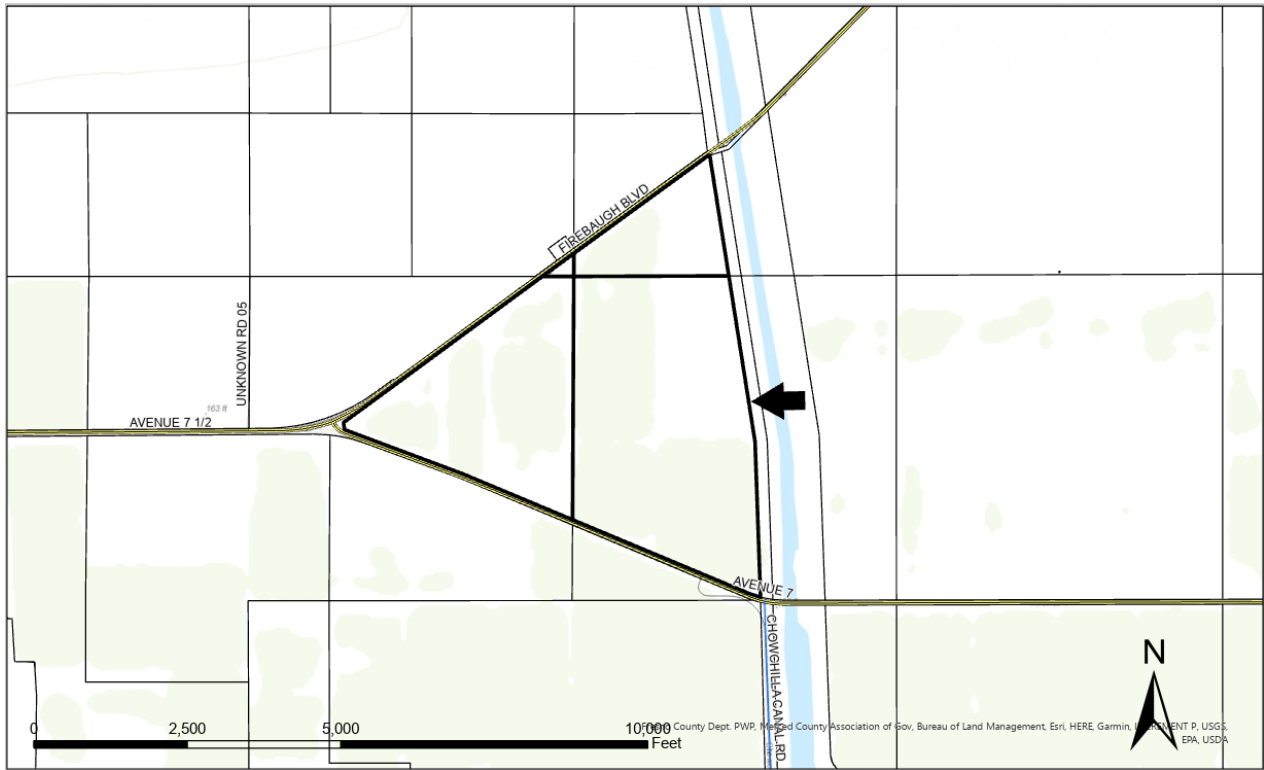
**Project Description:** The project is Request for a Parcel Map (PM #4318) and Conditional Use Permit (CUP #2024-003) to construct a single-axis tracker ground mounted photovoltaic (PV) community solar and battery storage facility, approximately 6.68MWdc/5.00MWac in capacity. The PV solar array with attached battery storage will generate and store clean renewable solar energy with electricity offtake sold to residential customers within Madera County and the larger PG&E utility territory. The proposed project will occupy approximately 25 acres of the 40-acre parcel created by Parcel Map #4318.

**Document Availability:** The Initial Study/MND will be available for review at the following location beginning on Tuesday, July 9<sup>th</sup>, 2024:

- County of Madera Community & Economic Development Planning Division, 200 W 4<sup>th</sup> Street, Madera, CA 93637

**Public Review Period:** The 20-day public review period for the Initial Study/MND is from July 9 to July 28, 2024.

**Comments:** Any person who wishes to comment on the County's intent to adopt the MND must submit written comments no later than 5:00 p.m. on Monday July 29, 2024. Written comments may be sent to Jacob Aragon, Planner II, County of Madera Community & Economic Development Planning Division, 200 W 4<sup>th</sup> Street, Ste. 3100, Madera, CA 93637



### Site Map