

---

# **Appendix D**

## Cultural Resources Inventory Report



July 26, 2024

15823

Laura Traffenstedt  
City of La Mesa  
8130 Allison Avenue  
City of La Mesa, California 91941

**Subject: Cultural Resources Phase I Inventory Report for the 9407 Jericho Road Project, City of La Mesa, California**

Dear Ms. Traffenstedt:

This letter documents the cultural resources Phase I inventory conducted by Dudek for the 9407 Jericho Road Project (Project), located in the City of La Mesa, California (Figure 1). The proposed Project would redevelop the existing site with up to 73 three-story residential townhomes. The proposed townhomes would range in size from approximately 1,200 – 1,800 square feet with 2-4 bedrooms. The City of La Mesa (City) is the lead agency responsible for compliance with the California Environmental Quality Act (CEQA). In accordance with CEQA, Dudek performed a Phase I cultural resources inventory for the entire Project area. The Project area consists of approximately 3.49-acre area covering one parcel (APN 486-670-18) (Figure 2).

CEQA refers to sequential stages of cultural resources investigation, including Inventory, Evaluation, and Mitigation. Phase I (Inventory), Phase II (Evaluation), and Phase III (Mitigation) are vernacular terms used in the cultural resources industry. For the purposes of this report, Phase I is defined as an Inventory and includes archival research for archaeological resources and Tribal Cultural Resources (TCRs), pedestrian surveys, and other inventory methods.

Dudek conducted a records search of the California Historical Resources Information System (CHRIS) at the South Coastal Information Center (SCIC), located on the campus of San Diego State University for the Project area and a one-mile search buffer. The SCIC records search indicates that no cultural resources intersect the Project area. Additionally, 34 previous cultural resources have been recorded within the one-mile search buffer of the Project area.

Dudek requested a search of the Sacred Lands File from the NAHC on January 31, 2024. A response letter was received via email from the NAHC on February 15, 2024, stating that the results were positive. The NAHC recommended Dudek contact the Native American Representatives who may have information about cultural resources within the Project area. Dudek sent outreach letters on February 19, 2024 and to date, no responses have been received.

Dudek conducted an intensive level cultural resources pedestrian survey for the Project area and did not identify any cultural resources within the Project area. The Project area contains three buildings including the Calvary church

with connected sanctuary on its east elevation constructed in 1959 and two educational buildings constructed in 1973, located north of the church. These structures are considered built environment resources and are addressed in a separate built environment report (Ahmanson 2024).

Due to the presence of historic age buildings on the Project area, there is a moderate sensitivity for identifying unanticipated historic age subsurface archaeological deposits during Project implementation. Dudek recommends cultural resources monitoring, consisting of a qualified archaeological monitor and Kumeyaay Native American monitor during all initial ground disturbing activities within native soils (below the fill sediment). Monitoring can be reduced or terminated should no discoveries are made or if documentation is provided which demonstrates that ground-disturbing activities will be occurring in sediments with no potential for cultural resources to be present. If human remains are found, the County Coroner shall be immediately notified of the discovery in accordance with Section 7050.5 of the California Health and Safety Code.

## 3 Project Description and Location

The Project is located at 9407 Jericho Road, in the City of La Mesa (APN 486-670-18). The Project area falls within Section 16 of Township 16 South, Range 1 West of the La Mesa and El Cajon, California 7.5-minute Quadrangles (Figure 1). The current Project area has been previously disturbed and is currently developed with the existing Calvary Chapel, parking lot, turf area, playground, and associated church facilities/structures. The Project area is located in an urban area of the City surrounded on all sides by existing development, including single-family homes to the north and east, and multi-family developments to the south and the west.

The Project consists of demolition of existing commercial uses on-site (Calvary Church), and redevelopment 73 three-story townhomes on the 3.49-acre site (Figure 1). The townhomes would range in size from approximately 1,200 – 1,800 square feet and 2-4 bedrooms. The Project would include two garage spaces per unit plus approximately five (5) guest spaces.

## 2 Regulatory Framework

### 2.1 The California Register of Historic Resources (Public Resources Code section 5020 et seq.)

Under CEQA, the term “historical resource” includes but is not limited to “any object, building, structure, site, area, place, record, or manuscript which is historically or archaeologically significant, or is significant in the architectural, engineering, scientific, economic, agricultural, educational, social, political, military, or cultural annals of California” (California Public Resources Code section 5020.1(j)). In 1992, the California legislature established CRHR “to be used by state and local agencies, private groups, and citizens to identify the state’s historical resources and to indicate what properties are to be protected, to the extent prudent and feasible, from substantial adverse change” (California Public Resources Code section 5024.1(a)). A resource is eligible for listing in the CRHR if the State Historical Resources Commission determines that it is a significant resource and that it meets any of the following National Register of Historic Places (NRHP) criteria:

- Associated with events that have made a significant contribution to the broad patterns of California’s history and cultural heritage.
- Associated with the lives of persons important in our past.
- Embodies the distinctive characteristics of a type, period, region, or method of construction, or represents the work of an important creative individual, or possesses high artistic values.
- Has yielded, or may be likely to yield, information important in prehistory or history.

(California Public Resources Code section 5024.11.) Resources less than 50 years old are not considered for listing in the CRHR, but may be considered if it can be demonstrated that sufficient time has passed to understand the historical importance of the resource (see 14 CCR, section 4852(d)(2)).

The CRHR protects cultural resources by requiring evaluations of the significance of prehistoric and historic resources. The criteria for the CRHR are nearly identical to those for the NRHP, and properties listed or formally designated as eligible for listing on the NRHP are automatically listed on the CRHR, as are the state landmarks and points of interest. The CRHR also includes properties designated under local ordinances or identified through local historical resource surveys. The State Historic Preservation Officer maintains the CRHR.

## 2.2 Native American Historic Cultural Sites (California Public Resources Code section 5097 et seq.)

State law addresses the disposition of Native American burials in archaeological sites and protects such remains from disturbance, vandalism, or inadvertent destruction; establishes procedures to be implemented if Native American skeletal remains are discovered during construction of a project; and establishes the NRHC to resolve disputes regarding the disposition of such remains. In addition, the Native American Historic Resource Protection Act makes it a misdemeanor punishable by up to 1 year in jail to deface or destroy an Indian historic or cultural site that is listed or may be eligible for listing in the CRHR.

## 2.3 California Environmental Quality Act

As described further below, the following CEQA statutes and CEQA Guidelines are of relevance to the analysis of archaeological and historic resources:

1. California Public Resources Code section 21083.2(g): Defines “unique archaeological resource.”
2. California Public Resources Code section 21084.1 and CEQA Guidelines section 15064.5(a): Define historical resources. In addition, CEQA Guidelines section 15064.5(b) defines the phrase “substantial adverse change in the significance of an historical resource;” it also defines the circumstances when a project would materially impair the significance of a historical resource.
3. California Public Resources Code section 5097.98 and CEQA Guidelines section 15064.5I: Set forth standards and steps to be employed following the accidental discovery of human remains in any location other than a dedicated ceremony.
4. California Public Resources Code sections 21083.2(b)-(c) and CEQA Guidelines section 15126.4: Provide information regarding the mitigation framework for archaeological and historic resources, including options of preservation-in-place mitigation measures; preservation-in-place is the preferred manner of mitigating

impacts to significant archaeological sites because it maintains the relationship between artifacts and the archaeological context, and may also help avoid conflict with religious or cultural values of groups associated with the archaeological site(s).

Under CEQA, a project may have a significant effect on the environment if it may cause “a substantial adverse change in the significance of an historical resource” (California Public Resources Code section 21084.1; CEQA Guidelines section 15064.5(b)). If a site is either listed or eligible for listing in the CRHR, or if it is included in a local register of historic resources, or identified as significant in a historical resources survey (meeting the requirements of California Public Resources Code section 5024.1(q)), it is a “historical resource” and is presumed to be historically or culturally significant for purposes of CEQA (California Public Resources Code section 21084.1; CEQA Guidelines section 15064.5(a)). The lead agency is not precluded from determining that a resource is a historical resource even if it does not fall within this presumption (California Public Resources Code section 21084.1; CEQA Guidelines section 15064.5(a)).

A “substantial adverse change in the significance of an historical resource” reflecting a significant effect under CEQA means “physical demolition, destruction, relocation, or alteration of the resource or its immediate surroundings such that the significance of an historical resource would be materially impaired” (CEQA Guidelines section 15064.5(b)(1); California Public Resources Code section 5020.1(q)). In turn, the significance of a historical resource is materially impaired when a project:

1. Demolishes or materially alters in an adverse manner those physical characteristics of an historical resource that convey its historical significance and that justify its inclusion in, or eligibility for, inclusion in the California Register; or
2. Demolishes or materially alters in an adverse manner those physical characteristics that account for its inclusion in a local register of historical resources pursuant to section 5020.1(k) of the Public Resources Code or its identification in an historical resources survey meeting the requirements of section 5024.1(g) of the Public Resources Code, unless the public agency reviewing the effects of the project establishes by a preponderance of evidence that the resource is not historically or culturally significant; or
3. Demolishes or materially alters in an adverse manner those physical characteristics of a historical resource that convey its historical significance and that justify its eligibility for inclusion in the California Register as determined by a lead agency for purposes of CEQA.

See Section 2.7, below for a discussion of the CEQA guidelines for determining significance and mitigating impacts to unique archaeological resources.

## 2.4 California Health and Safety Code Section 7050.5 and Public Resources Code Section 5097.98

CEQA Guidelines Section 15064.5 assigns special importance to human remains and specifies procedures to be used when Native American remains are discovered. As described below, these procedures are detailed in California Health and Safety Code Section 7050.5 and Public Resources Code Section 5097.98.

California law protects Native American burials, skeletal remains, and associated grave goods, regardless of their antiquity, and provides for the sensitive treatment and disposition of those remains. Health and Safety Code Section 7050.5 requires that if human remains are discovered in any place other than a dedicated cemetery, no

further disturbance or excavation of the site or nearby area reasonably suspected to contain human remains shall occur until the County coroner has examined the remains (California Health and Safety Code Section 7050.5[b]). If the coroner determines or has reason to believe the remains are those of a Native American, the coroner must contact the NAHC within 24 hours (California Health and Safety Code Section 7050.5[c]). In accordance with California Public Resources Code Section 5097.98(a), the NAHC will notify the Most Likely Descendant (MLD). With the permission of the landowner, the MLD may inspect the site of discovery. Within 48 hours of being granted access to the site, the MLD may recommend means of treatment or disposition, with appropriate dignity, of the human remains and associated grave goods.

## 2.5 Assembly Bill 52

California Assembly Bill 52, which took effect July 1, 2015, establishes a consultation process between California Native American Tribes and lead agencies in order to address tribal concerns regarding project impacts and mitigation to “tribal cultural resources” (TCR). Public Resources Code section 21074(a) defines TCRs and states that a project that has the potential to cause a substantial adverse change to a TCR is a project that may have an adverse effect on the environment. A TCR is defined as a site, feature, place, cultural landscape, sacred place, and object with cultural value to a California Native American tribe that is either:

1. listed or eligible for listing in the CRHR or a local register of historical resources, or
2. determined by a lead agency to be a TCR.

## 2.6 Senate Bill 18

California Senate Bill 18 (SB 18), which took effect on March 1, 2005, requires local (city and county) governments to consult with California Native American tribes identified by the Native American Heritage Commission (NAHC) for the purpose of protecting, and/or mitigating impacts to cultural places in creating or amending general plans, including specific plans (Government Code section 65352.3).

## 2.7 Guidelines for Determining Significance

According to CEQA (§15064.5b), a project with an effect that may cause a substantial adverse change in the significance of an historical resource is a project that may have a significant effect on the environment. CEQA defines a substantial adverse change:

Substantial adverse change in the significance of an historical resource means physical demolition, destruction, relocation, or alteration of the resource or its immediate surroundings such that the significance of an historical resource would be materially impaired.

The significance of an historical resource is materially impaired when a project:

- Demolishes or materially alters in an adverse manner those physical characteristics of an historical resource that convey its historical significance and that justify its inclusion in, or eligibility for inclusion in, the CRHR; or

- Demolishes or materially alters in an adverse manner those physical characteristics that account for its inclusion in a local register of historical resources pursuant to section 5020.1(k) of the Public Resources Code or its identification in an historical resources survey meeting the requirements of section 5024.1(g) of the Public Resources Code, unless the public agency reviewing the effects of the project establishes by a preponderance of evidence that the resource is not historically or culturally significant; or
- Demolishes or materially alters in an adverse manner those physical characteristics of an historical resource that convey its historical significance and that justify its eligibility for inclusion in the CRHR as determined by a lead agency for purposes of CEQA.

Section 15064.5I of CEQA applies to effects on archaeological sites and contains the following additional provisions regarding archaeological sites:

- When a project will impact an archaeological site, a lead agency shall first determine whether the site is an historical resource, as defined in subsection (a).
- If a lead agency determines that the archaeological site is a historical resource, it shall refer to the provisions of Section 21084.1 of the Public Resources Code, and this section, Section 15126.4 of the Guidelines, and the limits contained in Section 21083.2 of the Public Resources Code do not apply.
- If an archaeological site does not meet the criteria defined in subsection (a), but does meet the definition of a unique archaeological resource in Section 21083.2 of the Public Resources Code, the site shall be treated in accordance with the provisions of section 21083.2. The time and cost limitations described in Public Resources Code Section 21083.2 (c-f) do not apply to surveys and site evaluation activities intended to determine whether the project location contains unique archaeological resources.
- If an archaeological resource is neither a unique archaeological nor a historical resource, the effects of the project on those resources shall not be considered a significant effect on the environment. It shall be sufficient that both the resource and the effect on it are noted in the Initial Study or Environmental Impact Report (EIR), if one is prepared to address impacts on other resources, but they need not be considered further in the CEQA process.

Section 15064.5(d) and I contain additional provisions regarding human remains. Regarding Native American human remains, paragraph (d) provides:

When an initial study identifies the existence of, or the probable likelihood of, Native American human remains within the project, a lead agency shall work with the appropriate Native Americans as identified by the Native American Heritage Commission as provided in Public Resources Code SS5097.98. The applicant may develop an agreement for treating or disposing of, with appropriate dignity, the human remains and any items associated with Native American burials with the appropriate Native Americans as identified by the Native American Heritage Commission. Action implementing such an agreement is exempt from:

1. The general prohibition on disinterring, disturbing, or removing human remains from any location other than a dedicated cemetery (Health and Safety Code Section 7050.5); and
2. The requirement of CEQA and the Coastal Act.



Under CEQA, an EIR is required to evaluate any impacts on unique archaeological resources (California Public Resources Code section 21083.2.) A “unique archaeological resource” is defined as:

[A]n archaeological artifact, object, or site about which it can be clearly demonstrated that, without merely adding to the current body of knowledge, there is a high probability that it meets any of the following criteria:

1. Contains information needed to answer important scientific research questions and that there is a demonstrable public interest in that information.
2. Has a special and particular quality such as being the oldest of its type or the best available example of its type.
3. Is directly associated with a scientifically recognized important prehistoric or historic event or person.

(California Public Resources Code section 21083.2(g)). An impact to a non-unique archaeological resource is not considered a significant environmental impact and such non-unique resources need not be further addressed in the EIR (Public Resources Code section 21083.2(a); CEQA Guidelines section 15064.5(c)(4)).

As stated above, CEQA contains rules for mitigation of “unique archaeological resources.” For example, “[i]f it can be demonstrated that a project will cause damage to a unique archaeological resource, the lead agency may require reasonable efforts to be made to permit any or all of these resources to be preserved in place or left in an undisturbed state. Examples of that treatment, in no order of preference, may include, but are not limited to, any of the following:

1. Planning construction to avoid archaeological sites.
2. Deeding archaeological sites into permanent conservation easements.
3. Capping or covering archaeological sites with a layer of soil before building on the sites.
4. Planning parks, greenspace, or other open space to incorporate archaeological sites.” (Pub. Resources Code section 21083.2(b)(1)-(4).)

Public Resources Code section 21083.2(d) states that “[e]xcavation as mitigation shall be restricted to those parts of the unique archaeological resource that would be damaged or destroyed by the project. Excavation as mitigation shall not be required for a unique archaeological resource if the lead agency determines that testing or studies already completed have adequately recovered the scientifically consequential information from and about the resource, if this determination is documented in the environmental impact report.”

The rules for mitigating impacts to archaeological resources to qualify as “historic resources” are slightly different. According to CEQA Guidelines section 15126.4(b), “[p]ublic agencies should, whenever feasible, seek to avoid damaging effects on any historic resource of an archaeological nature. The following factors shall be considered and discussed in an EIR for a project involving such an archaeological site:

- A. Preservation in place is the preferred manner of mitigating impacts to archaeological sites. Preservation in place maintains the relationship between artifacts and the archaeological context. Preservation may also avoid conflict with religious or cultural values of groups associated with the site.
- B. Preservation in place may be accomplished by, but is not limited to, the following:
  - 1. Planning construction to avoid archaeological sites;
  - 2. Incorporation of sites within parks, greenspace, or other open space;
  - 3. Covering the archaeological sites with a layer of chemically stable soil before building tennis courts, parking lots, or similar facilities on the site[; and]
  - 4. Deeding the site into a permanent conservation easement.

Thus, although section 21083.2 of the Public Resources Code, in addressing “unique archaeological sites,” provides for specific mitigation options “in no order of preference,” CEQA Guidelines section 15126.4(b), in addressing “historical resources of an archaeological nature,” provides that “[p]reservation in place is the preferred manner of mitigating impacts to archaeological sites.”

Under CEQA, “[w]hen data recovery through excavation is the only feasible mitigation,” the lead agency may cause to be prepared and adopt a “data recovery plan,” prior to any excavation being undertaken. The data recovery plan must make “provision for adequately recovering the scientifically consequential information from and about the historic resource.” (CEQA Guidelines section 15126.4(b)(3)(C).) The data recovery plan also “must be deposited with the California Historical Resources Regional Information Center.” (*Ibid.*) Further, “[i]f an artifact must be removed during project excavation or testing, curation may be an appropriate mitigation.” (*Ibid.*)

However, “[d]ata recovery shall not be required for an historical resource if the lead agency determines that testing or studies already completed have adequately recovered the scientifically consequential information from and about the archaeological or historic resource, provided that determination is documented in the EIR and that the studies are deposited with the California Historical Resources Regional Information Center.” (CEQA Guidelines section 15126.4(b)(3)(D).)

## 2.8 City of La Mesa General Plan

The City of La Mesa adopted a General Plan in 2012 that documents the goals, objectives, and policies that guides the City’s development and vision until 2030. The General Plan contains an Historic Preservation element, which was developed to:

Provide a long-range blueprint to guide the process of historic preservation in La Mesa through 2030, including the identification and treatment of historical and cultural resources, to support program management and decision-making, and to integrate preservation planning into the comprehensive urban planning and development process. The Historic Preservation Element provides Goals, Objectives, and Policies intended to sustain and improve the quality of La Mesa’s built and cultural environment, and to

promote awareness and enthusiasm for the unique identity and heritage that La Mesa possesses (City of La Mesa 2012: HP-12 – HP 14).

The Historic Preservation Element is reproduced below (City of La Mesa 2012: HP-12 – HP 14):

**Goal HP-1:** Broadened recognition by La Mesans that the spirit and direction of the City’s growth is substantially reflected in its historic past.

Objective HP-1.1: Broaden recognition and awareness of the processes and features of the La Mesa Historic Preservation Program.

Policy HP-1.1.1: Form partnerships and share information between the City and preservation advocacy organizations to foster and support local public history projects.

Policy HP-1.1.2: Inform citizens and project applicants of preservation regulations as part of the development review process.

Objective HP-1.2: Update and maintain the La Mesa Historic Resources Inventory to identify the potential eligibility of properties built in the historic-era.

Policy HP-1.2.1: Implement a phased Historical Resource Survey program that accounts for all locations in the City and all building stock that achieves the historic era through time.

Policy HP-1.2.2: Establish guidelines for identifying eligible properties in the Modern Period (circa 1935-1975) throughout the City.

**Goal HP-2:** Safeguarded heritage by preserving those elements that reflect our cultural, social, economic, and architectural history so that community residents will have a foundation upon which to measure and direct physical change.

Objective HP-2.1: Encourage retention and reuse of significant and / or historic-era building stock to safeguard heritage, promote material conservation, and provide for sustainable and green building techniques at historic-era properties.

Policy HP-2.1.1: Develop guidelines on the architectural styles of La Mesa with corresponding character-defining features to serve as a threshold for local Landmark designation eligibility.

Policy HP-2.1.2: Incorporate sustainability principles and green building practices at historic-era buildings and sites in a sensitive and complementary manner.

Policy HP-2.1.3: Update the Resource Management Guidelines to account for The Secretary of the Interior’s Standards for Rehabilitation & Illustrated Guidelines on Sustainability for Rehabilitating Historic Buildings.

**Goal HP-3:** A strengthened local economic base with stabilized and improved property values through the identification and protection of individual properties and historic districts.

Objective HP-3.1: Advance traditional town planning techniques and urban design models consistent with periods of development in La Mesa that will strengthen livability and pedestrian opportunities.

Policy HP-3.1.1: Establish a historic context on the residential development history of La Mesa to identify potential historic districts based on residential subdivision tract map boundaries and relative to the greater architectural and planning history of community building.

Policy HP-3.1.2: Establish Conservation Overlay Zones in Historic Districts to ensure appropriate use, density, scale, massing, and physical arrangement of existing and new buildings within Historic District boundaries.

## 3 Methods

### 3.1 Records Search

Dudek conducted a records search of the California Historical Resources Information System (CHRIS) at the South Coastal Information Center (SCIC), located on the campus of San Diego State University for the Project area and a one-mile search buffer on February 7, 2024. The records search results indicates that 41 previous cultural resources studies have been conducted within one-mile radius of the Project area; none of which intersect the Project area. The entirety of the Project area has not been previously studied. The full records search results is attached as Confidential Appendix A.

The SCIC records search did not identify any cultural resources within the Project area. The records search did identify 34 cultural resources within the one-mile buffer outside of the Project area (Confidential Appendix A). Of the total 34 resources identified in the one-mile radius buffer, 33 are historic built environment resources (buildings), one is a prehistoric artifact scatter, and one is an undocumented resource. Additionally, 23 historic addresses were identified within the one-mile radius buffer outside of the Project area; none of which intersect the Project area. The full records search results is attached as Confidential Appendix A.

### 3.2 Archival Research

In addition to the SCIC records search, Dudek conducted an on-line review of historic aerial photographs of the Project area and general vicinity, to help determine the possible development and land use of the Project area in the past. Historic aerial photographs of the Project area were available from 1953 to 2020 (NETR 2024). The historic aerial from 1953 reveals that the Project area was undeveloped. It appears that Amaya Drive had been developed southeast of the Project area by 1953. The 1964 aerial imagery reveals the Calvary church, parking lot, and Jericho Road as developed within the Project area, while construction activity for residential and commercial properties is seen in the adjacent parcels. The historic aerial from 1960 does not show any substantial changes to the Project area, however, there is a steady increase in residential and commercial properties in the adjacent parcels. The 1968 historic aerial does not show any substantial changes to the Project area, however, there was development of residential properties along Broadmoore Place immediately north of the Project area. The historic aerial from 1978 does not show any substantial changes to the Project area, however, there was development of residential properties immediately southwest of the Project area. The historic aerial from 1980 does not show any substantial changes to the Project area or general vicinity. There are no changes to the Project area on the 1981

to 1999. By 2000 the historic aerials reveal the parking lot within the Project area had been expanded. There are no substantial changes to the Project area between 2002 to 2014. The historic aerial from 2019 reveals there is redevelopment of the asphalt court within the northwestern portion of the Project area. A review of the historic aerials reveal that the Project area is currently used for commercial purposes. The Project area contains three buildings including the Calvary church with connected sanctuary on its east elevation constructed in 1959 and two educational buildings constructed in 1973, located north of the church. The parking lot located within the center portion of the Project area has been expanded in the 1980s. These structures are considered built environment resources and are addressed in a separate built environment report (Ahmanson 2024).

Historic topographic (topo) maps of the Project area were reviewed (earliest map available is 1893). The 1969 topo map shows the Calvary church as developed within the Project area. By 2015, the topo map shows the Calvary church as a commercial building.

### 3.3 Geotechnical Review

LGC Geotechnical, Inc. prepared a geotechnical subsurface due diligence evaluation for the Project area (Boratynec and Petersen 2023). The study details the results of five small-diameter hollow stem borings. The borings were drilled to depths of approximately 6.5 to 14 feet below existing grade. The Project area is underlain by the Mission Valley Formation and the Mission Valley Formation is underlain by older artificial fill that was placed during the development of the existing development (Boratynec and Petersen 2023). The depth of the artificial fill ranges from approximately 2.5 to 7.5 feet below existing grade. It was also noted that borings are only representative of the location and time where they were placed, and subsurface conditions may vary outside of the boring locations (Boratynec and Petersen 2023).

### 3.4 Native American Heritage Commission Sacred Lands File Search and Tribal Correspondence

Dudek requested a search of the Sacred Lands Files (SLF) from the Native American Heritage Commission (NAHC) on January 31, 2024. The SLF consists of a database of known Native American resources. These resources may not be included in the SCIC database. A response letter was received via email from the NAHC on February 15, 2024, stating the results were positive, but did not provide details on what the resource(s) are or where they are located in relation to the Project area (Appendix B). The NAHC additionally provided a list of Native American tribes and individuals/organizations with traditional geographic associations that might have knowledge of cultural resources in this area. Outreach letters were mailed on February 19, 2024 to all Native American group representatives included on the NAHC contact list (Appendix B). These letters attempted to solicit additional information relating to Native American resources that may be impacted by the Project. No responses have been received to date. Any responses to the letters will be forwarded to the City and included in subsequent drafts of this report. The NAHC correspondence is included in Appendix B.

In compliance with Assembly Bill 52 and Senate Bill 18, the City, as lead agency, is responsible for conducting government to government consultation with pertinent tribal entities.

## 3.5 Survey Results

Dudek archaeologist Javier Hernandez conducted an intensive level pedestrian survey of the Project area on February 23, 2024. Red Tail Environmental Inc., Native American monitor Kenny Teter participated in the pedestrian survey. All survey work was conducted employing standard archaeological procedures and techniques consistent with the Secretary of the Interior Standards. Fifteen-meter interval survey transects were conducted where possible for the Project area. Where transects were not feasible (such as areas where the ground surface was obscured by development, pavement, and landscaping) transects were not utilized. Instead, a mixed approach (opportunistic survey) was utilized, selectively examining terraces and exposed sediments where possible. The ground surface was examined for prehistoric artifacts (e.g., flaked stone tools, tool-making debris, stone milling tools, ceramics, fire-affected rock), soil discoloration that might indicate the presence of a cultural midden, soil depressions, features indicative of the current or former presence of structures or buildings (e.g., standing exterior walls, post holes, foundations), and historic artifacts (e.g., metal, glass, ceramics, building materials). Ground disturbances such as burrows, cut banks, and drainages were also visually inspected for exposed subsurface materials.

The entire Project area has been disturbed, as evidenced by the presence of one existing building (Calvary Church) and paved surfaces (parking lot and asphalt playground/game court) (Figure 3). Approximately 75% of the Project area is developed, while the remainder of the Project area consists of a primarily landscaped open area (Figure 4). Ground visibility in the Project area was poor (0-25%) and visibility was obscured by the existing building, paved surfaces, and landscaped grass. The soil consisted of a medium brown sand with moderate content (25-50%) of modern shell fragments. No cultural resources were identified within the Project area.

## 4 Summary and Management Considerations

### 4.1 Archaeological Recommendations

Dudek's Phase I cultural resources inventory of the Project indicates that there is moderate sensitivity for identifying intact subsurface historic age archaeological deposits during Project implementation. The SCIC records search results indicates that no cultural resources have been identified within the Project area. However, the records search identified 34 cultural resources within one-mile of the Project area. The archival research review also revealed that the entire Project area has not been previously studied.

The pedestrian survey did not identify any cultural resources within the Project area. However, there are three historic age (over 45 years old) buildings located within Project area including one Calvary Church and two educational buildings. These structures are considered built environment resources and are addressed in a separate built environment report (Ahmanson 2024).

Dudek recommends that a qualified archaeologist and Kumeyaay Native American monitor to be present during all initial ground disturbing activities to confirm there are no subsurface deposits. If disturbed sediments (e.g., fill) or other sediments and formations are identified that do not have the potential to contain cultural resources, then monitoring may be reduced or terminated.

#### Unanticipated Discovery of Human Remains

In accordance with Section 7050.5 of the California Health and Safety Code, if human remains are found, the County Coroner shall be notified within 24 hours of the discovery. No further excavation or disturbance of the site or any nearby area reasonably suspected to overlie adjacent remains shall occur until the County Coroner has determined, within two working days of notification of the discovery, the appropriate treatment and disposition of the human remains. If the remains are determined to be Native American, the Coroner shall notify the NAHC in Sacramento within 24 hours. In accordance with California Public Resources Code, Section 5097.98, the NAHC must immediately notify those persons it believes to be the most likely descended (MLD) from the deceased Native American. The MLD shall complete their inspection within 48 hours of being granted access to the site. The designated Native American representative would then determine, in consultation with the property owner, the disposition of the human remains

Should you have any questions relating to this report and its findings, please do not hesitate to contact me at 760.846.5874 or mmurillo@dudek.com and Angela Pham at 760.479.4855 or apham@dudek.com.

Respectfully Submitted,



---

Makayla Murillo, B.A.,  
Archaeologist



---

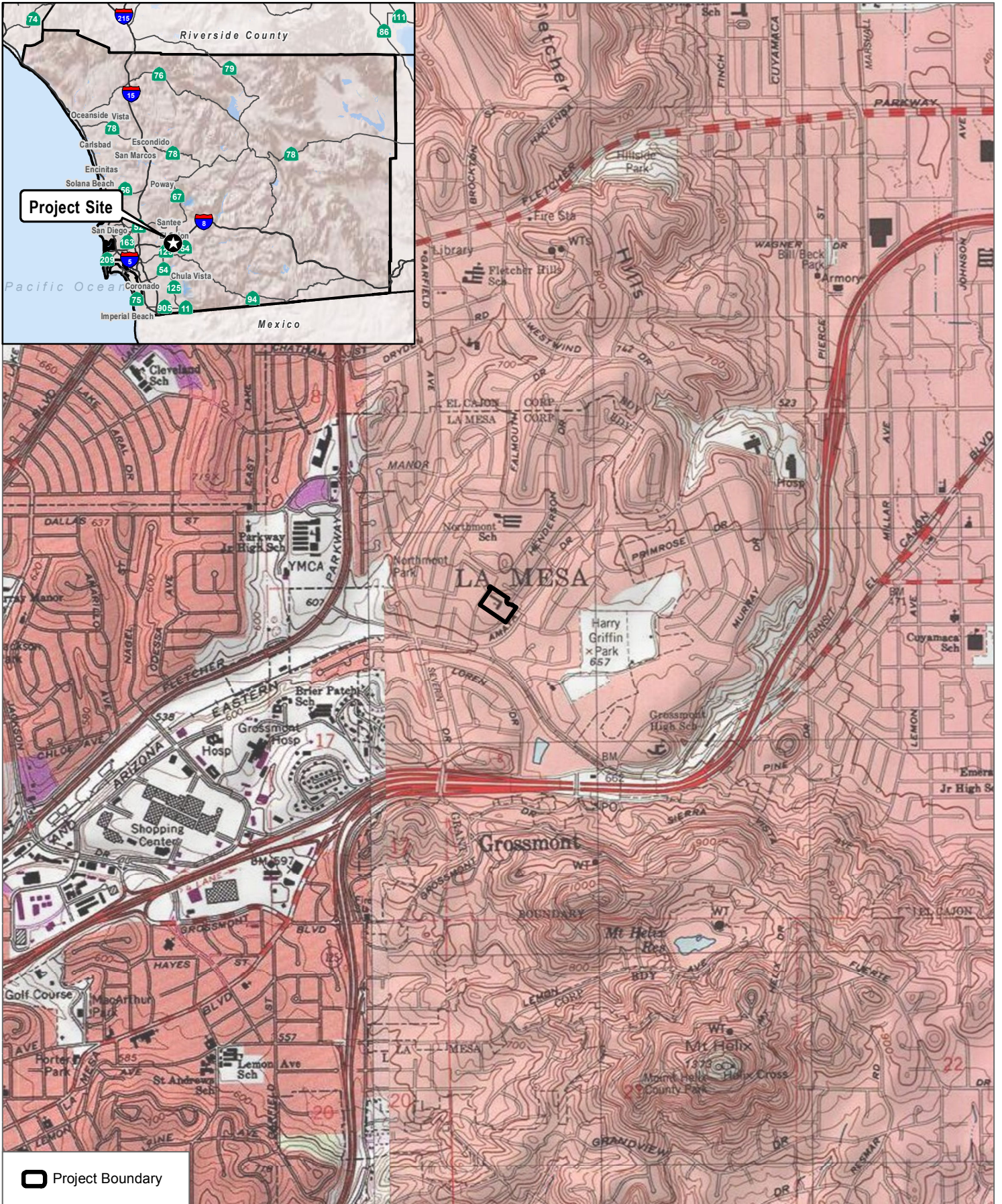
Angela Pham, M.A., RPA  
Archaeologist

Att.: *Figure 1, Project Location*  
*Figure 2, Project Area Map*  
*Figure 3. Overview of the Calvary Church and parking lot, facing northeast.*  
*Figure 4. Overview of the eastern portion of Project area, view facing southwest.*  
*Confidential Appendix A, SCIC Records Search Results*  
*Appendix B, NAHC and Tribal Correspondence*  
cc: *Vanessa Scheidel, Micah Hale, Dudek*

## 5 References

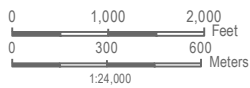
- Boratynec and Petersen. 2023. *Preliminary Geotechnical Subsurface Dude Diligence Evaluation for the Proposed Residential Development, 9407 Jericho Road, La Mesa, California*. Prepared for Meritage Homes.
- City of La Mesa General Plan. 2012. Accessed February 20, 2024.  
<https://www.cityoflamesa.us/DocumentCenter/View/6201/07LaMesaGPHistoricPreservation-CD?bidId=>
- NETR (National Environmental Title Research). 2024. 9407 Jericho Road, La Mesa, California. Accessed February 2024. <http://www.historicaerials.com/>.





SOURCE: USGS 7.5-Minute Series La Mesa and El Cajon Quadrangles  
Township 16 S / Range 1 W / Section 16

**DUDEK**



**FIGURE 1**  
**Project Location**  
Jericho Road Project





SOURCE: SanGIS 2023, Open Street Map 2019

**DUDEK**



**FIGURE 2**  
**Project Area Map**  
Jericho Road Project





**Figure 3.** Overview of the Calvary Church and parking lot, facing northeast.



**Figure 4.** Overview of the eastern portion of Project area, view facing southwest.

---

# **Confidential Appendix A**

## SCIC Records Search Results

---

# **Appendix B**

## NAHC and Tribal Correspondence

# Sacred Lands File & Native American Contacts List Request

## Native American Heritage Commission

1550 Harbor Blvd, Suite 100

West Sacramento, CA 95691

916-373-3710

916-373-5471 – Fax

[nahc@nahc.ca.gov](mailto:nahc@nahc.ca.gov)

*Information Below is Required for a Sacred Lands File Search*

**Project:** 9407 Jericho Road Project

**County:** San Diego County

**USGS Quadrangle Name:** 7.5-Minute Series La Mesa and El Cajon Quadrangle

**Township:** 16S      **Range:** 1W      **Section(s):** 16

**Company/Firm/Agency:** Dudek

**Street Address:** 605 Third Street

**City:** Encinitas      **Zip:** 92024

**Phone:** 760.479.4827

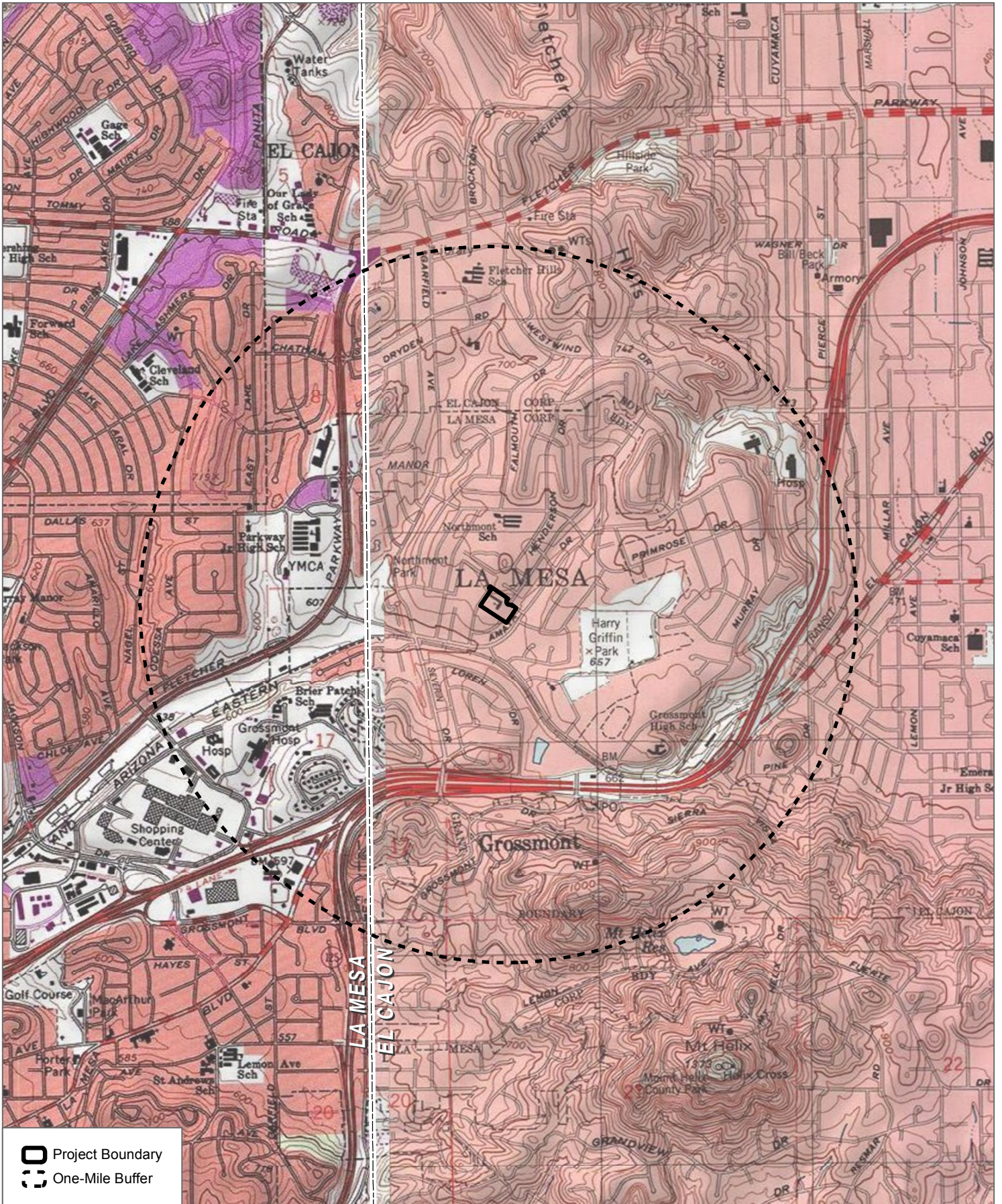
**Fax:** 760.632.0164



**Email:** mmurillo@dudek.com & apham@dudek.com

### Project Description:

MLC Holdings, Inc. is proposing to redevelop the existing site at 9407 Jericho Road, in the City of La Mesa, California. The project would include up to 73 three story townhomes on a 3.49 acre site. The townhomes would range in size from approximately 1,200 - 1,800 square feet and 2 - 4 bedrooms.





 Project Boundary  
 One-Mile Buffer

SOURCE: USGS 7.5-Minute Series La Mesa and El Cajon Quadrangles  
 Township 16 S / Range 1 W / Section 16



**DUDEK** 

Records Search Map

Jericho Road Project



## NATIVE AMERICAN HERITAGE COMMISSION

February 15, 2024

Makayla Murillo  
Dudek

Via Email to: [mmurillo@dudek.com](mailto:mmurillo@dudek.com)

**Re: 9407 Jericho Road Project, San Diego County**

Dear Ms. Murillo:

A record search of the Native American Heritage Commission (NAHC) Sacred Lands File (SLF) was completed for the information submitted for the above referenced project. The results were positive. Please contact the Barona Group of the Capitan Grande and the Viejas Band of Kumeyaay Indians on the attached list for information. Please also contact the Kumeyaay Cultural Repatriation Committee via phone at (760) 803-5694 for information. Please note that tribes do not always record their sacred sites in the SLF, nor are they required to do so. A SLF search is not a substitute for consultation with tribes that are traditionally and culturally affiliated with a project's geographic area. Other sources of cultural resources should also be contacted for information regarding known and recorded sites, such as the appropriate regional California Historical Research Information System (CHRIS) archaeological Information Center for the presence of recorded archaeological sites.

Attached is a list of Native American tribes who may also have knowledge of cultural resources in the project area. This list should provide a starting place in locating areas of potential adverse impact within the proposed project area. Please contact all of those listed; if they cannot supply information, they may recommend others with specific knowledge. By contacting all those listed, your organization will be better able to respond to claims of failure to consult with the appropriate tribe. If a response has not been received within two weeks of notification, the Commission requests that you follow-up with a telephone call or email to ensure that the project information has been received.

If you receive notification of change of addresses and phone numbers from tribes, please notify the NAHC. With your assistance, we can assure that our lists contain current information.

If you have any questions or need additional information, please contact me at my email address: [Murphy.Donahue@NAHC.ca.gov](mailto:Murphy.Donahue@NAHC.ca.gov)

Sincerely,

*Murphy Donahue*

Murphy Donahue  
Cultural Resources Analyst

Attachment



CHAIRPERSON  
**Reginald Pagaling**  
Chumash

VICE-CHAIRPERSON  
**Buffy McQuillen**  
Yokayo Pomo, Yuki,  
Nomlaki

SECRETARY  
**Sara Dutschke**  
Miwok

PARLIAMENTARIAN  
**Wayne Nelson**  
Luiseño

COMMISSIONER  
**Isaac Bojorquez**  
Ohlone-Costanoan

COMMISSIONER  
**Stanley Rodriguez**  
Kumeyaay

COMMISSIONER  
**Laurena Bolden**  
Serrano

COMMISSIONER  
**Reid Milanovich**  
Cahuilla

COMMISSIONER  
**Vacant**

EXECUTIVE SECRETARY  
**Raymond C.  
Hitchcock**  
Miwok, Nisenan

**NAHC HEADQUARTERS**  
1550 Harbor Boulevard  
Suite 100  
West Sacramento,  
California 95691  
(916) 373-3710  
[nahc@nahc.ca.gov](mailto:nahc@nahc.ca.gov)  
NAHC.ca.gov



Native American Heritage Commission  
Native American Contact List  
San Diego County  
2/15/2024

| County    | Tribe Name                                   | Fed (F)<br>Non-Fed (N) | Contact Person                                    | Contact Address   | Phone #        | Fax #          | Email Address                    | Cultural Affiliation | Counties                            | Last Updated |
|-----------|--|------------------------|---|---|----------------|----------------|----------------------------------|----------------------|-------------------------------------|--------------|
| San Diego | Barona Group of the Capitan Grande           | F                      | Art Bunce, Attorney                               |   | (760) 489-0329 |                | buncelaw@aol.com                 | Diegueno             | Imperial,San Diego                  | 7/25/2023    |
|           | Campo Band of Diegueno Mission Indians       | F                      | Ralph Goff, Chairperson                           | 36190 Church Road, Suite 1<br>Campo, CA, 91906                          | (619) 478-9046 | (619) 478-5818 | rgoff@campo-nsn.gov              | Diegueno             | Imperial,Orange,Riverside,San Diego |              |
|           | Ewiiaapaayp Band of Kumeyaay Indians         | F                      | Michael Garcia, Vice Chairperson                  | 4054 Willows Road<br>Alpine, CA, 91901                                  | (619) 933-2200 | (619) 445-9126 | michaalg@leaningrock.net         | Diegueno             | Imperial,Orange,Riverside,San Diego |              |
|           | Ewiiaapaayp Band of Kumeyaay Indians         | F                      | Robert Pinto, Chairperson                         | 4054 Willows Road<br>Alpine, CA, 91901                                  | (619) 368-4382 | (619) 445-9126 | ceo@ebki-nsn.gov                 | Diegueno             | Imperial,Orange,Riverside,San Diego |              |
|           | Iipay Nation of Santa Ysabel                 | F                      | Clint Linton, Director of Cultural Resources      | P.O. Box 507<br>Santa Ysabel, CA, 92070                                 | (760) 803-5694 |                | clinton@redtailenvironmental.com | Diegueno             | Imperial,San Diego                  | 11/30/2023   |
|           | Inaja-Cosmit Band of Indians                 | F                      | Rebecca Osuna, Chairperson                        | 2005 S. Escondido Blvd.<br>Escondido, CA, 92025                         | (760) 737-7628 | (760) 747-8568 |                                  | Diegueno             | Imperial,San Diego                  |              |
|           | Jamul Indian Village                         | F                      | Lisa Cumper, Tribal Historic Preservation Officer | P.O. Box 612<br>Jamul, CA, 91935  | (619) 669-4855 |                | lcumper@jiv-nsn.gov              | Diegueno             | Imperial,San Diego                  | 9/5/2018     |
|           | Jamul Indian Village                         | F                      | Erica Pinto, Chairperson                          | P.O. Box 612<br>Jamul, CA, 91935  | (619) 669-4785 | (619) 669-4817 | epinto@jiv-nsn.gov               | Diegueno             | Imperial,San Diego                  |              |
|           | Kwaaymii Laguna Band of Mission Indians      | N                      | Carmen Lucas, Chairperson                         | P.O. Box 775<br>Pine Valley, CA, 91962                                  | (619) 709-4207 |                |                                  | Kwaaymii<br>Diegueno | Imperial,San Diego                  | 6/20/2023    |
|           | La Posta Band of Diegueno Mission Indians    | F                      | Gwendolyn Parada, Chairperson                     | 8 Crestwood Road<br>Boulevard, CA, 91905                                | (619) 478-2113 | (619) 478-2125 | LP13boots@aol.com                | Diegueno             | Imperial,Orange,Riverside,San Diego |              |
|           | Manzanita Band of Kumeyaay Nation            | F                      | Angela Elliott Santos, Chairperson                | P.O. Box 1302<br>Boulevard, CA, 91905                                   | (619) 766-4930 | (619) 766-4957 |                                  | Diegueno             | Imperial,Orange,Riverside,San Diego |              |
|           | Mesa Grande Band of Diegueno Mission Indians | F                      | Michael Linton, Chairperson                       | P.O. Box 270<br>Santa Ysabel, CA, 92070                                 | (760) 782-3818 | (760) 782-9092 | mesagrandeband@msn.com           | Diegueno             | Imperial,Orange,Riverside,San Diego |              |
|           | San Pasqual Band of Diegueno Mission Indians | F                      | Allen Lawson, Chairperson                         | P.O. Box 365<br>Valley Center, CA, 92082                                | (760) 749-3200 | (760) 749-3876 | allenl@sanpasqualtribe.org       | Diegueno             | Imperial,San Diego                  |              |
|           | San Pasqual Band of Diegueno Mission Indians | F                      | John Flores, Environmental Coordinator            | P. O. Box 365<br>Valley Center, CA, 92082                               | (760) 749-3200 | (760) 749-3876 | johnf@sanpasqualtribe.org        | Diegueno             | Imperial,San Diego                  | 8/16/2016    |
|           | Sycuan Band of the Kumeyaay Nation           | F                      | Bernice Paipa, Cultural Resource Specialist       | Sycuan Cultural Center: 910<br>Willow Glen Drive<br>El Cajon, CA, 92019 | (619) 445-6917 |                | bpaipa2@sycuan-nsn.gov           | Kumeyaay             | Imperial,San Diego                  | 8/7/2023     |
|           | Sycuan Band of the Kumeyaay Nation           | F                      | Cody Martinez, Chairman                           | Sycuan Tribal Office: 1<br>Kwaaypaay Court<br>El Cajon, CA, 92019       | (619) 445-2613 |                | cmartinez@sycuan-nsn.gov         | Kumeyaay             | Imperial,San Diego                  | 8/7/2023     |
|           | Viejas Band of Kumeyaay Indians              | F                      | Ray Teran, Resource Management Director           | 1 Viejas Grade Road<br>Alpine, CA, 91901                                | (619) 659-2312 |                | rteran@viejas-nsn.gov            | Kumeyaay             | Imperial,San Diego                  | 6/29/2023    |
|           | Viejas Band of Kumeyaay Indians              | F                      | Ernest Pingleton, THPO                            | 1 Viejas Grade Road<br>Alpine, CA, 91901                                | (619) 445-3810 |                | epingleton@viejas-nsn.gov        | Kumeyaay             | Imperial,San Diego                  | 6/29/2023    |

This list is current only as of the date of this document. Distribution of this list does not relieve any person of statutory responsibility as defined in Section 7050.5 of the Health and Safety Code, Section 5097.94 of the Public Resource Section 5097.98 of the Public Resources Code.

This list is only applicable for contacting local Native Americans with regard to cultural resources assessment for the proposed 9407 Jericho Road Project, San Diego County.

Record: PROJ-2024-000798  
Report Type: List of Tribes  
Counties: San Diego  
NAHC Group: All

# DUDEK

MAIN OFFICE  
605 THIRD STREET  
ENCINITAS, CALIFORNIA 92024  
T 800.450.1818 F 760.632.0164

February 19, 2024

15823

Ms. Lisa Cumper, THPO  
Jamul Indian Village  
P.O. Box 612  
Jamul, CA 91935

**Subject: Information Request for the 9407 Jericho Road Residential Project, City of La Mesa, San Diego County, California**

Dear Ms. Cumper,

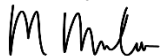
The 9407 Jericho Road Residential Project (project) is located at 9407 Jericho Road, in the City of La Mesa, San Diego County, California (Figure 1). The project plans to redevelop the existing site and construct 73 three-story townhomes on a 3.49-acre site. This project falls on Section 16, Township 16 South, Range 1 West in the La Mesa and El Cajon U.S. Geological Survey (USGS) 7.5-minute Quadrangles.

As part of the cultural resources study prepared for the proposed project, Dudek contacted the Native American Heritage Commission (NAHC) conducted a Sacred Lands file (SLF) search and a list of Native American individuals and/or tribal organizations who may have knowledge of cultural resources in or near the proposed project area. The NAHC emailed a response on February 15, 2024, which stated that the SLF search identified the presence of Native American cultural resources in the immediate project area.

Please note that this letter does not constitute Assembly Bill (AB) 52 notification or initiation of consultation. Tribes that wish to be notified of projects for the purposes of consultation must contact the lead agency, City of La Mesa (City) in writing (pursuant to Public Resources Code Section 21080.3.1 (b)).

If you have any information or concerns pertaining to such information, please contact me by phone or email.

Respectfully,

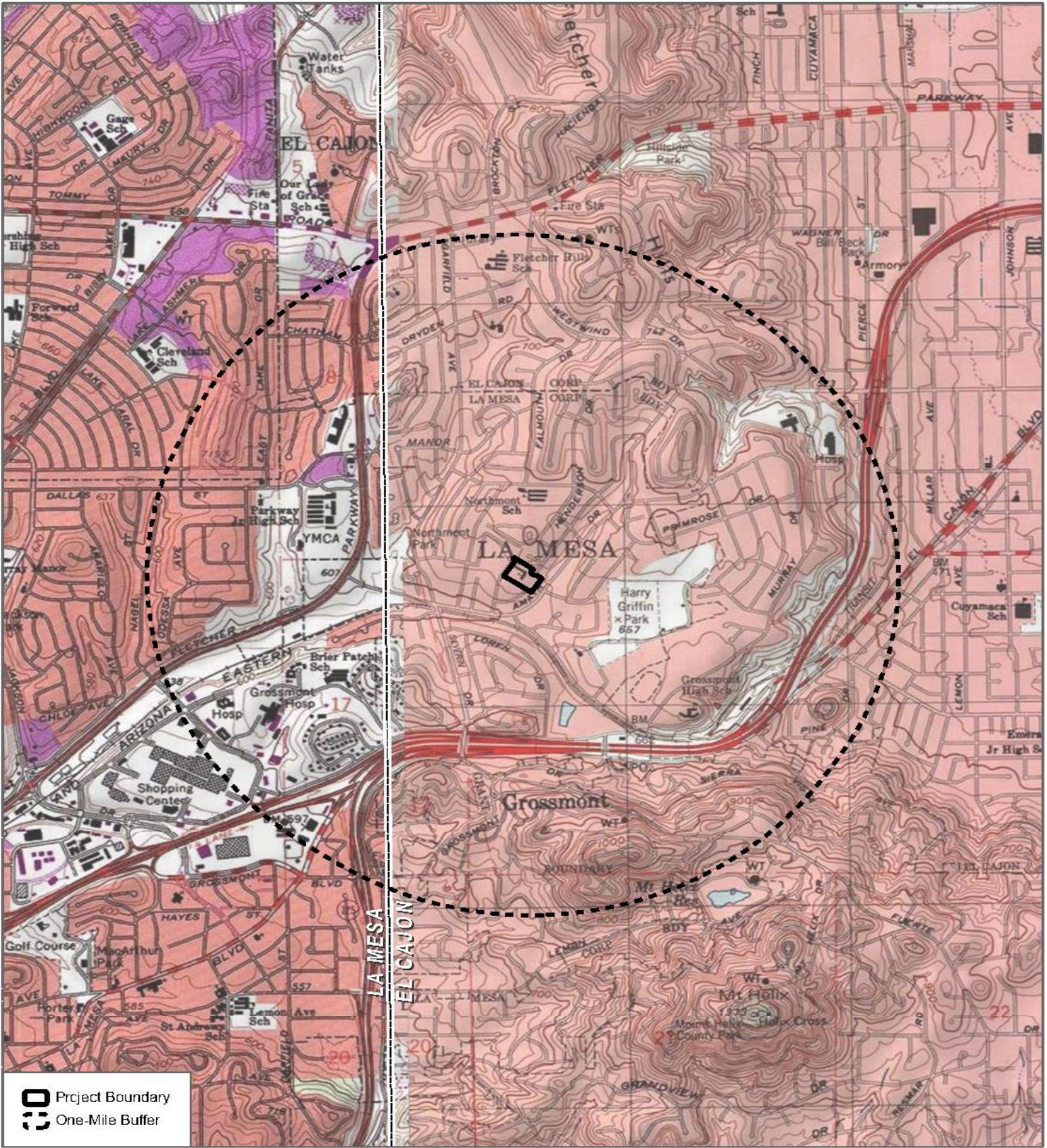



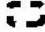
---

Makayla Murillo, B.A.  
Archaeologist  
DUDEK  
Phone: (760) 846-5874  
Email: mmurillo@dudek.com

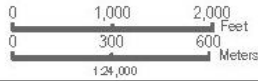
**Attachments:** Figure 1. Records Search Map





-  Project Boundary
-  One-Mile Buffer

SOURCE: USGS 7.5-Minute Series La Mesa and El Cajon Quadrangles  
 Township 16 S / Range 1 W / Section 16



Records Search Map

Jericho Road Project



# DUDEK

MAIN OFFICE  
605 THIRD STREET  
ENCINITAS, CALIFORNIA 92024  
T 800.450.1818 F 760.632.0164

February 19, 2024

15823

Mr. John Flores, Environmental Coordinator  
San Pasqual Band of Diegueno Mission Indians  
P.O. Box 365  
Valley Center, CA 92082

**Subject: Information Request for the 9407 Jericho Road Residential Project, City of La Mesa, San Diego County, California**

Dear Mr. Flores,

The 9407 Jericho Road Residential Project (project) is located at 9407 Jericho Road, in the City of La Mesa, San Diego County, California (Figure 1). The project plans to redevelop the existing site and construct 73 three-story townhomes on a 3.49-acre site. This project falls on Section 16, Township 16 South, Range 1 West in the La Mesa and El Cajon U.S. Geological Survey (USGS) 7.5-minute Quadrangles.

As part of the cultural resources study prepared for the proposed project, Dudek contacted the Native American Heritage Commission (NAHC) conducted a Sacred Lands file (SLF) search and a list of Native American individuals and/or tribal organizations who may have knowledge of cultural resources in or near the proposed project area. The NAHC emailed a response on February 15, 2024, which stated that the SLF search identified the presence of Native American cultural resources in the immediate project area.

Please note that this letter does not constitute Assembly Bill (AB) 52 notification or initiation of consultation. Tribes that wish to be notified of projects for the purposes of consultation must contact the lead agency, City of La Mesa (City) in writing (pursuant to Public Resources Code Section 21080.3.1 (b)).

If you have any information or concerns pertaining to such information, please contact me by phone or email.

Respectfully,

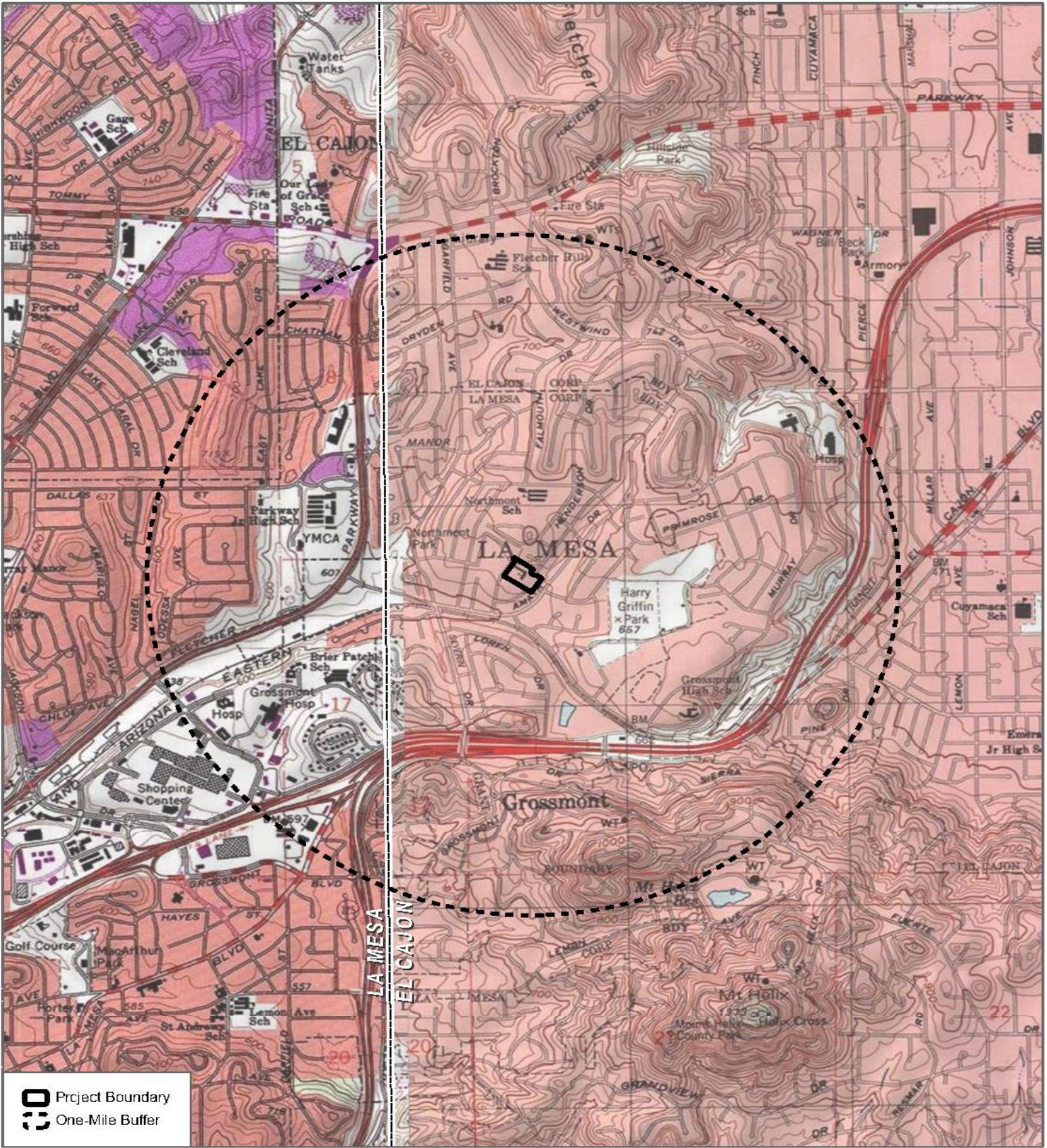



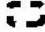
---

Makayla Murillo, B.A.  
Archaeologist  
DUDEK  
Phone: (760) 846-5874  
Email: mmurillo@dudek.com

**Attachments:** Figure 1. Records Search Map

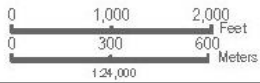




-  Project Boundary
-  One-Mile Buffer

SOURCE: USGS 7.5-Minute Series La Mesa and El Cajon Quadrangles  
 Township 16 S / Range 1 W / Section 16

**DUDEK**



Records Search Map

Jericho Road Project



# DUDEK

MAIN OFFICE  
605 THIRD STREET  
ENCINITAS, CALIFORNIA 92024  
T 800.450.1818 F 760.632.0164

February 19, 2024

15823

Mr. Michael Garcia, Vice Chairperson  
Ewiiapaayp Band of Kumeyaay Indians  
4054 Willows Road  
Alpine, CA 91901

**Subject: Information Request for the 9407 Jericho Road Residential Project, City of La Mesa, San Diego County, California**

Dear Mr. Garcia,

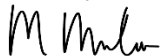
The 9407 Jericho Road Residential Project (project) is located at 9407 Jericho Road, in the City of La Mesa, San Diego County, California (Figure 1). The project plans to redevelop the existing site and construct 73 three-story townhomes on a 3.49-acre site. This project falls on Section 16, Township 16 South, Range 1 West in the La Mesa and El Cajon U.S. Geological Survey (USGS) 7.5-minute Quadrangles.

As part of the cultural resources study prepared for the proposed project, Dudek contacted the Native American Heritage Commission (NAHC) conducted a Sacred Lands file (SLF) search and a list of Native American individuals and/or tribal organizations who may have knowledge of cultural resources in or near the proposed project area. The NAHC emailed a response on February 15, 2024, which stated that the SLF search identified the presence of Native American cultural resources in the immediate project area.

Please note that this letter does not constitute Assembly Bill (AB) 52 notification or initiation of consultation. Tribes that wish to be notified of projects for the purposes of consultation must contact the lead agency, City of La Mesa (City) in writing (pursuant to Public Resources Code Section 21080.3.1 (b)).

If you have any information or concerns pertaining to such information, please contact me by phone or email.

Respectfully,

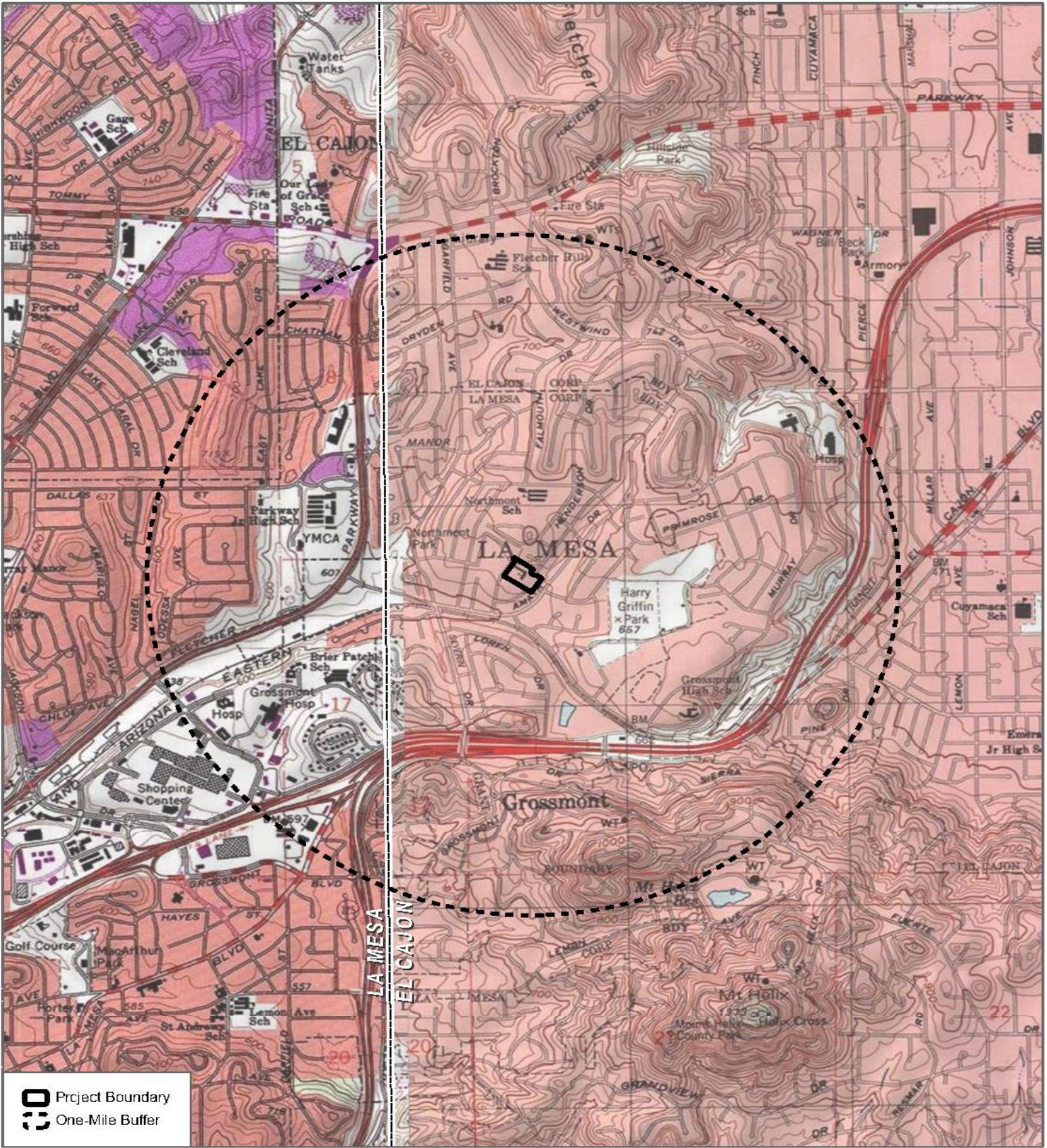



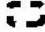
---

Makayla Murillo, B.A.  
Archaeologist  
DUDEK  
Phone: (760) 846-5874  
Email: mmurillo@dudek.com

**Attachments:** Figure 1. Records Search Map

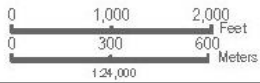




-  Project Boundary
-  One-Mile Buffer

SOURCE: USGS 7.5-Minute Series La Mesa and El Cajon Quadrangles  
 Township 16 S / Range 1 W / Section 16

**DUDEK**



Records Search Map

Jericho Road Project



# DUDEK

MAIN OFFICE  
605 THIRD STREET  
ENCINITAS, CALIFORNIA 92024  
T 800.450.1818 F 760.632.0164

February 19, 2024

15823

Mr. Ralph Goff, Chairperson  
Campo Band of Diegueno Mission Indians  
36190 Church Road, Suite 1  
Campo, CA 91906

**Subject: Information Request for the 9407 Jericho Road Residential Project, City of La Mesa, San Diego County, California**

Dear Mr. Goff,

The 9407 Jericho Road Residential Project (project) is located at 9407 Jericho Road, in the City of La Mesa, San Diego County, California (Figure 1). The project plans to redevelop the existing site and construct 73 three-story townhomes on a 3.49-acre site. This project falls on Section 16, Township 16 South, Range 1 West in the La Mesa and El Cajon U.S. Geological Survey (USGS) 7.5-minute Quadrangles.

As part of the cultural resources study prepared for the proposed project, Dudek contacted the Native American Heritage Commission (NAHC) conducted a Sacred Lands file (SLF) search and a list of Native American individuals and/or tribal organizations who may have knowledge of cultural resources in or near the proposed project area. The NAHC emailed a response on February 15, 2024, which stated that the SLF search identified the presence of Native American cultural resources in the immediate project area.

Please note that this letter does not constitute Assembly Bill (AB) 52 notification or initiation of consultation. Tribes that wish to be notified of projects for the purposes of consultation must contact the lead agency, City of La Mesa (City) in writing (pursuant to Public Resources Code Section 21080.3.1 (b)).

If you have any information or concerns pertaining to such information, please contact me by phone or email.

Respectfully,

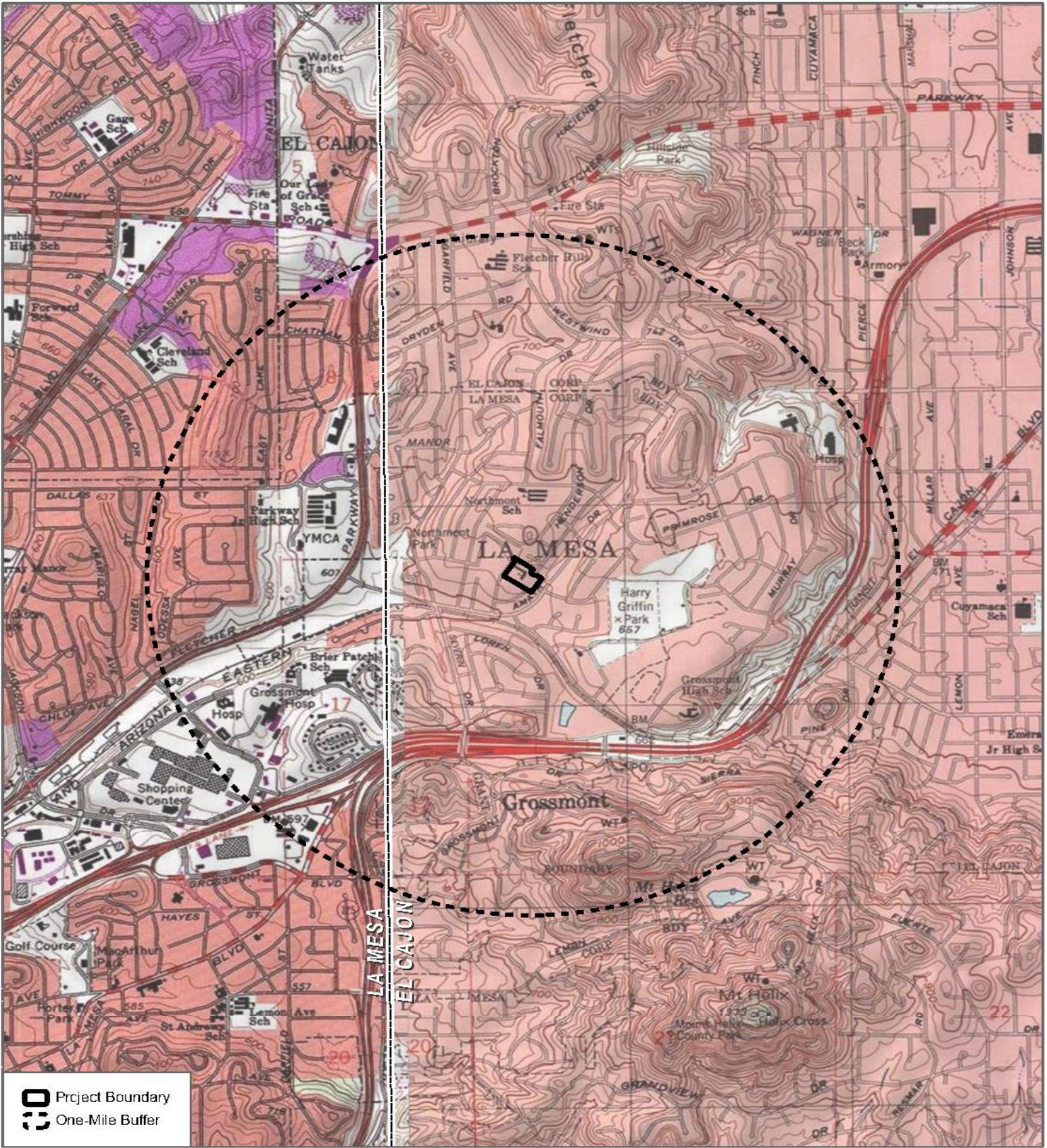



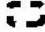
---

Makayla Murillo, B.A.  
Archaeologist  
DUDEK  
Phone: (760) 846-5874  
Email: mmurillo@dudek.com

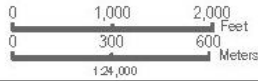
**Attachments:** Figure 1. Records Search Map





-  Project Boundary
-  One-Mile Buffer

SOURCE: USGS 7.5-Minute Series La Mesa and El Cajon Quadrangles  
 Township 16 S / Range 1 W / Section 16



Records Search Map

Jericho Road Project



# DUDEK

MAIN OFFICE  
605 THIRD STREET  
ENCINITAS, CALIFORNIA 92024  
T 800.450.1818 F 760.632.0164

February 19, 2024

15823

Mr. Allen E. Lawson, Chairperson  
San Pasqual Band of Diegueno Mission Indians  
P.O. Box 365  
Valley Center, CA 92082

**Subject: Information Request for the 9407 Jericho Road Residential Project, City of La Mesa, San Diego County, California**

Dear Mr. Lawson,

The 9407 Jericho Road Residential Project (project) is located at 9407 Jericho Road, in the City of La Mesa, San Diego County, California (Figure 1). The project plans to redevelop the existing site and construct 73 three-story townhomes on a 3.49-acre site. This project falls on Section 16, Township 16 South, Range 1 West in the La Mesa and El Cajon U.S. Geological Survey (USGS) 7.5-minute Quadrangles.

As part of the cultural resources study prepared for the proposed project, Dudek contacted the Native American Heritage Commission (NAHC) conducted a Sacred Lands file (SLF) search and a list of Native American individuals and/or tribal organizations who may have knowledge of cultural resources in or near the proposed project area. The NAHC emailed a response on February 15, 2024, which stated that the SLF search identified the presence of Native American cultural resources in the immediate project area.

Please note that this letter does not constitute Assembly Bill (AB) 52 notification or initiation of consultation. Tribes that wish to be notified of projects for the purposes of consultation must contact the lead agency, City of La Mesa (City) in writing (pursuant to Public Resources Code Section 21080.3.1 (b)).

If you have any information or concerns pertaining to such information, please contact me by phone or email.

Respectfully,

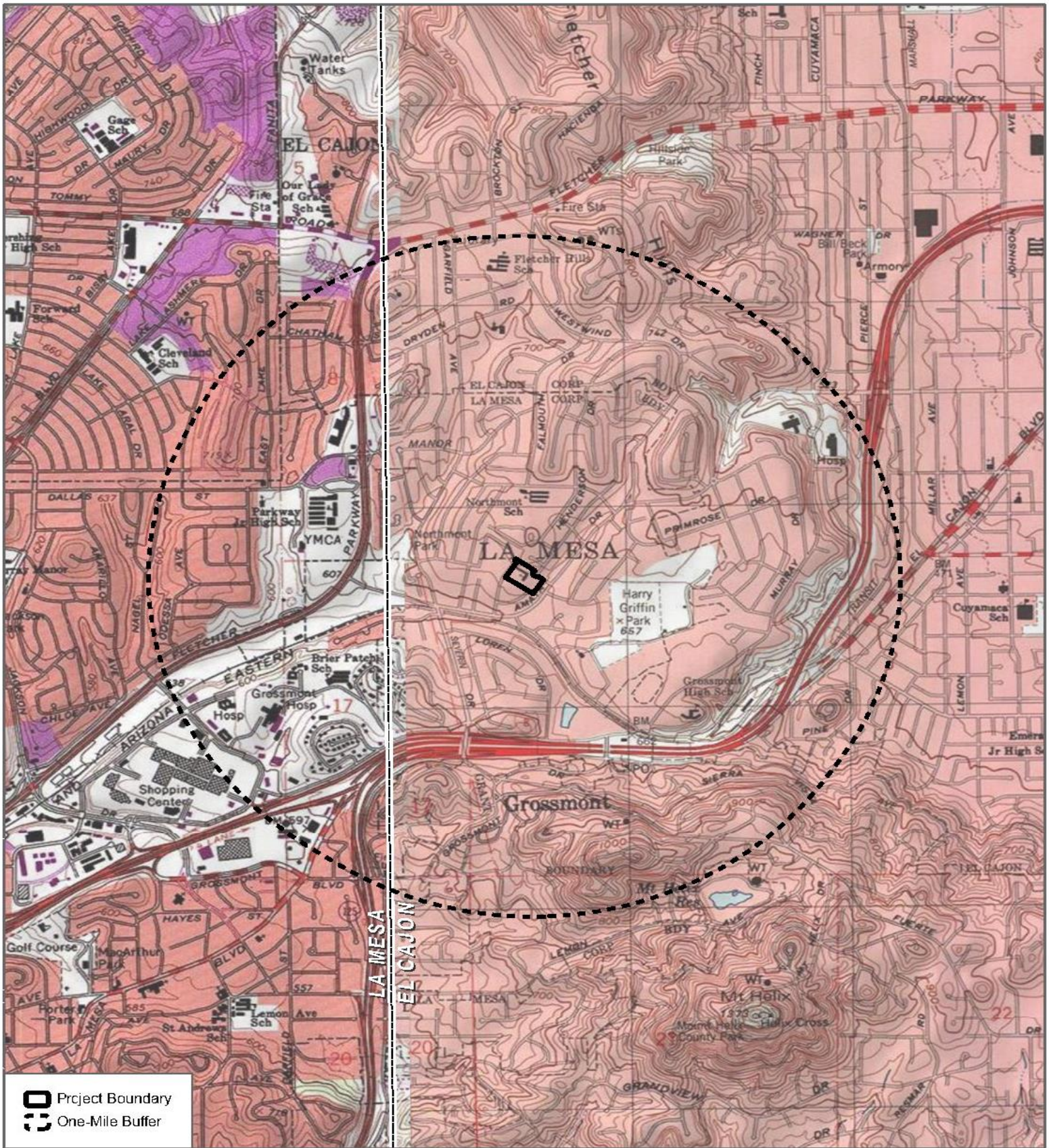



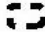
---

Makayla Murillo, B.A.  
Archaeologist  
DUDEK  
Phone: (760) 846-5874  
Email: mmurillo@dudek.com

**Attachments:** Figure 1. Records Search Map





-  Project Boundary
-  One-Mile Buffer

SOURCE: USGS 7.5-Minute Series La Mesa and El Cajon Quadrangles  
 Township 16 S / Range 1 W / Section 16

**DUDEK** 



Records Search Map

Jericho Road Project



# DUDEK

MAIN OFFICE  
605 THIRD STREET  
ENCINITAS, CALIFORNIA 92024  
T 800.450.1818 F 760.632.0164

February 19, 2024

15823

Mr. Clint Linton, Director of Cultural Resources  
Iipay Nation of Santa Ysabel  
P.O. Box 507  
Santa Ysabel, CA 92070

**Subject: Information Request for the 9407 Jericho Road Residential Project, City of La Mesa, San Diego County, California**

Dear Mr. Linton,

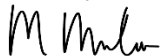
The 9407 Jericho Road Residential Project (project) is located at 9407 Jericho Road, in the City of La Mesa, San Diego County, California (Figure 1). The project plans to redevelop the existing site and construct 73 three-story townhomes on a 3.49-acre site. This project falls on Section 16, Township 16 South, Range 1 West in the La Mesa and El Cajon U.S. Geological Survey (USGS) 7.5-minute Quadrangles.

As part of the cultural resources study prepared for the proposed project, Dudek contacted the Native American Heritage Commission (NAHC) conducted a Sacred Lands file (SLF) search and a list of Native American individuals and/or tribal organizations who may have knowledge of cultural resources in or near the proposed project area. The NAHC emailed a response on February 15, 2024, which stated that the SLF search identified the presence of Native American cultural resources in the immediate project area.

Please note that this letter does not constitute Assembly Bill (AB) 52 notification or initiation of consultation. Tribes that wish to be notified of projects for the purposes of consultation must contact the lead agency, City of La Mesa (City) in writing (pursuant to Public Resources Code Section 21080.3.1 (b)).

If you have any information or concerns pertaining to such information, please contact me by phone or email.

Respectfully,

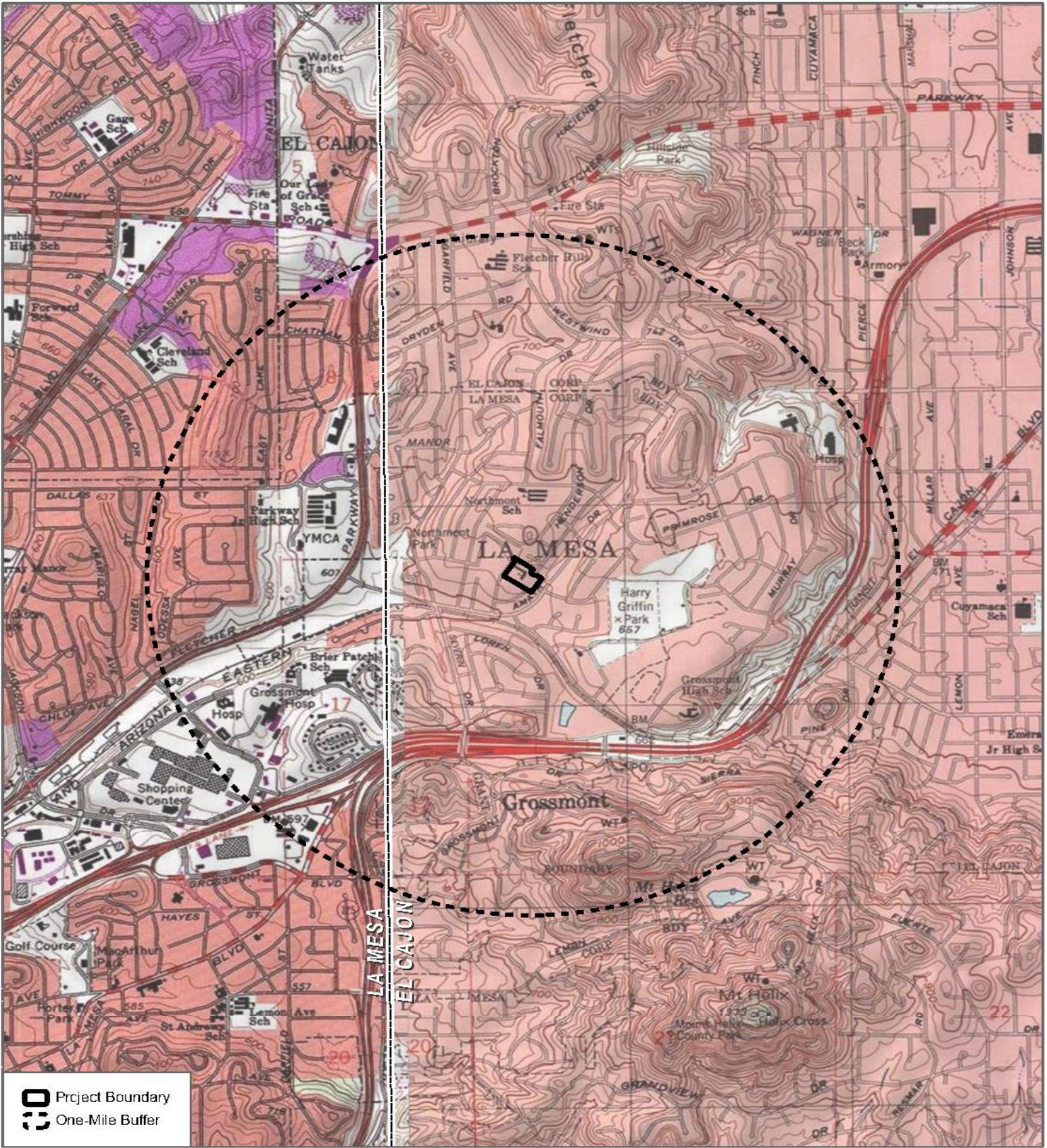



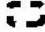
---

Makayla Murillo, B.A.  
Archaeologist  
DUDEK  
Phone: (760) 846-5874  
Email: mmurillo@dudek.com

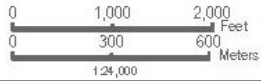
**Attachments:** Figure 1. Records Search Map





-  Project Boundary
-  One-Mile Buffer

SOURCE: USGS 7.5-Minute Series La Mesa and El Cajon Quadrangles  
 Township 16 S / Range 1 W / Section 16



Records Search Map

Jericho Road Project



# DUDEK

MAIN OFFICE  
605 THIRD STREET  
ENCINITAS, CALIFORNIA 92024  
T 800.450.1818 F 760.632.0164

February 19, 2024

15823

Mr. Michael Linton, Chairperson  
Mesa Grande Band of Dieguneo Mission Indians  
P.O. Box 270  
Santa Ysabel, CA 92070

**Subject: Information Request for the 9407 Jericho Road Residential Project, City of La Mesa, San Diego County, California**

Dear Mr. Linton,

The 9407 Jericho Road Residential Project (project) is located at 9407 Jericho Road, in the City of La Mesa, San Diego County, California (Figure 1). The project plans to redevelop the existing site and construct 73 three-story townhomes on a 3.49-acre site. This project falls on Section 16, Township 16 South, Range 1 West in the La Mesa and El Cajon U.S. Geological Survey (USGS) 7.5-minute Quadrangles.

As part of the cultural resources study prepared for the proposed project, Dudek contacted the Native American Heritage Commission (NAHC) conducted a Sacred Lands file (SLF) search and a list of Native American individuals and/or tribal organizations who may have knowledge of cultural resources in or near the proposed project area. The NAHC emailed a response on February 15, 2024, which stated that the SLF search identified the presence of Native American cultural resources in the immediate project area.

Please note that this letter does not constitute Assembly Bill (AB) 52 notification or initiation of consultation. Tribes that wish to be notified of projects for the purposes of consultation must contact the lead agency, City of La Mesa (City) in writing (pursuant to Public Resources Code Section 21080.3.1 (b)).

If you have any information or concerns pertaining to such information, please contact me by phone or email.

Respectfully,

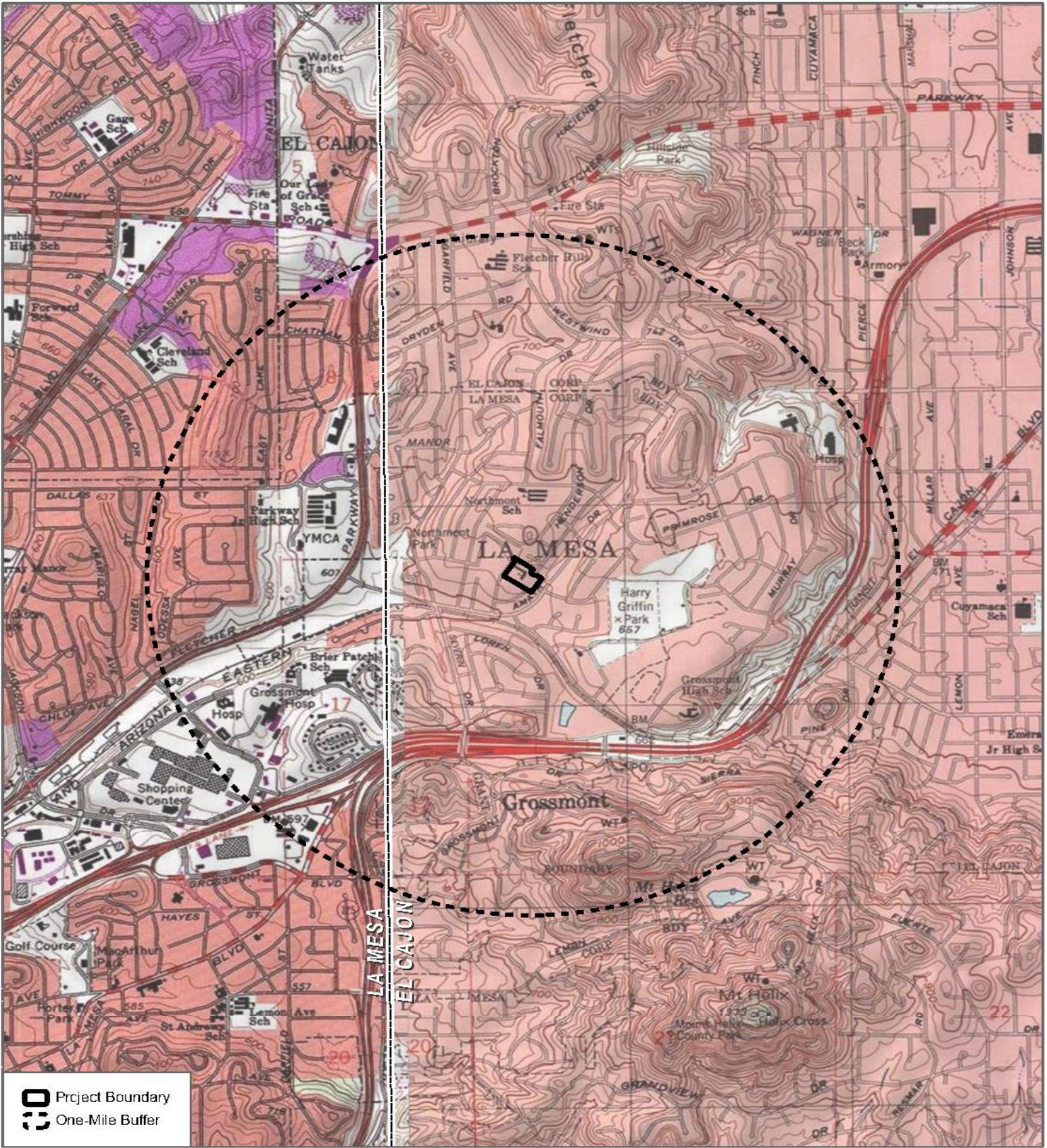



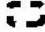
---

Makayla Murillo, B.A.  
Archaeologist  
DUDEK  
Phone: (760) 846-5874  
Email: mmurillo@dudek.com

**Attachments:** Figure 1. Records Search Map

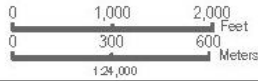




-  Project Boundary
-  One-Mile Buffer

SOURCE: USGS 7.5-Minute Series La Mesa and El Cajon Quadrangles  
 Township 16 S / Range 1 W / Section 16

**DUDEK** 



Records Search Map

Jericho Road Project



# DUDEK

MAIN OFFICE  
605 THIRD STREET  
ENCINITAS, CALIFORNIA 92024  
T 800.450.1818 F 760.632.0164

February 19, 2024

15823

Ms. Carmen Lucas,  
Kwaaymii Laguna Band of Mission Indians  
P.O. Box 775  
Pine Valley, CA 91962

**Subject: Information Request for the 9407 Jericho Road Residential Project, City of La Mesa, San Diego County, California**

Dear Ms. Lucas,

The 9407 Jericho Road Residential Project (project) is located at 9407 Jericho Road, in the City of La Mesa, San Diego County, California (Figure 1). The project plans to redevelop the existing site and construct 73 three-story townhomes on a 3.49-acre site. This project falls on Section 16, Township 16 South, Range 1 West in the La Mesa and El Cajon U.S. Geological Survey (USGS) 7.5-minute Quadrangles.

As part of the cultural resources study prepared for the proposed project, Dudek contacted the Native American Heritage Commission (NAHC) conducted a Sacred Lands file (SLF) search and a list of Native American individuals and/or tribal organizations who may have knowledge of cultural resources in or near the proposed project area. The NAHC emailed a response on February 15, 2024, which stated that the SLF search identified the presence of Native American cultural resources in the immediate project area.

Please note that this letter does not constitute Assembly Bill (AB) 52 notification or initiation of consultation. Tribes that wish to be notified of projects for the purposes of consultation must contact the lead agency, City of La Mesa (City) in writing (pursuant to Public Resources Code Section 21080.3.1 (b)).

If you have any information or concerns pertaining to such information, please contact me by phone or email.

Respectfully,

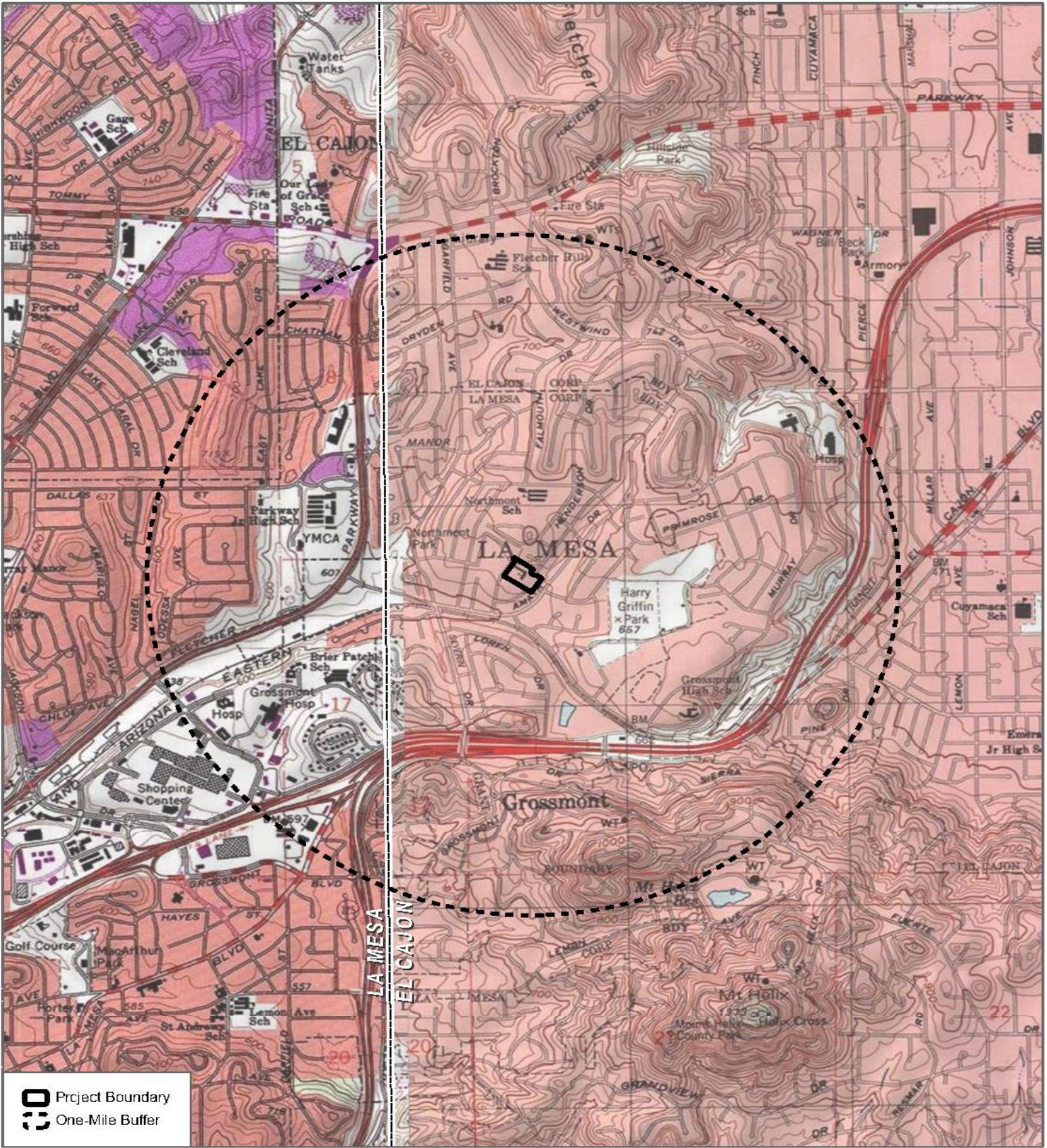



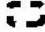
---

Makayla Murillo, B.A.  
Archaeologist  
DUDEK  
Phone: (760) 846-5874  
Email: mmurillo@dudek.com

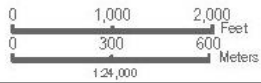
**Attachments:** *Figure 1. Records Search Map*





-  Project Boundary
-  One-Mile Buffer

SOURCE: USGS 7.5-Minute Series La Mesa and El Cajon Quadrangles  
 Township 16 S / Range 1 W / Section 16



Records Search Map

Jericho Road Project



# DUDEK

MAIN OFFICE  
605 THIRD STREET  
ENCINITAS, CALIFORNIA 92024  
T 800.450.1818 F 760.632.0164

February 19, 2024

15823

Mr. Cody Martinez, Chairperson  
Sycuan Band of the Kumeyaay Nation  
1 Kwaaypaay Court  
El Cajon, CA 92019

**Subject: Information Request for the 9407 Jericho Road Residential Project, City of La Mesa, San Diego County, California**

Dear Mr. Martinez,

The 9407 Jericho Road Residential Project (project) is located at 9407 Jericho Road, in the City of La Mesa, San Diego County, California (Figure 1). The project plans to redevelop the existing site and construct 73 three-story townhomes on a 3.49-acre site. This project falls on Section 16, Township 16 South, Range 1 West in the La Mesa and El Cajon U.S. Geological Survey (USGS) 7.5-minute Quadrangles.

As part of the cultural resources study prepared for the proposed project, Dudek contacted the Native American Heritage Commission (NAHC) conducted a Sacred Lands file (SLF) search and a list of Native American individuals and/or tribal organizations who may have knowledge of cultural resources in or near the proposed project area. The NAHC emailed a response on February 15, 2024, which stated that the SLF search identified the presence of Native American cultural resources in the immediate project area.

Please note that this letter does not constitute Assembly Bill (AB) 52 notification or initiation of consultation. Tribes that wish to be notified of projects for the purposes of consultation must contact the lead agency, City of La Mesa (City) in writing (pursuant to Public Resources Code Section 21080.3.1 (b)).

If you have any information or concerns pertaining to such information, please contact me by phone or email.

Respectfully,

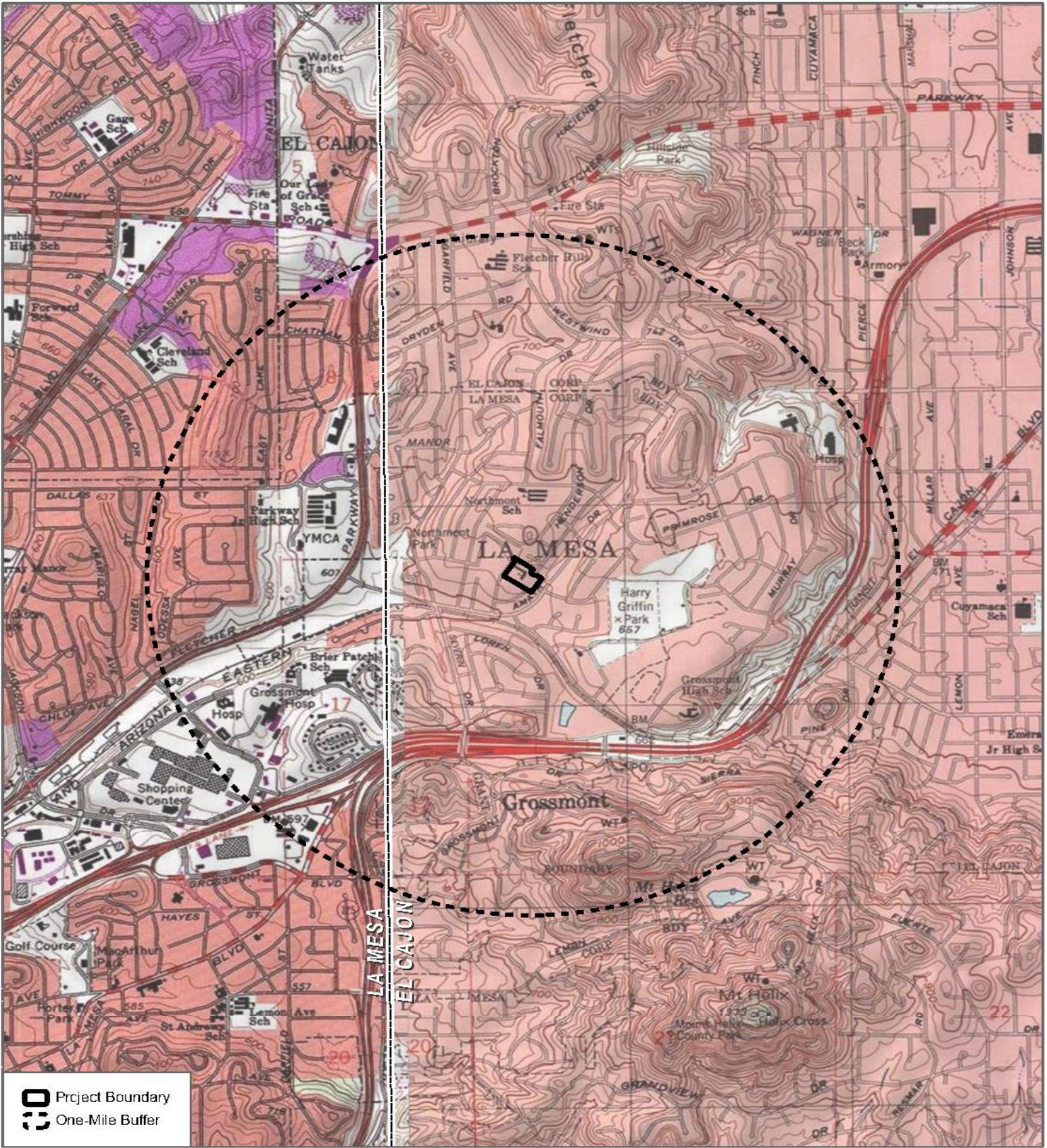



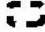
---

Makayla Murillo, B.A.  
Archaeologist  
DUDEK  
Phone: (760) 846-5874  
Email: mmurillo@dudek.com

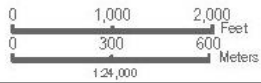
**Attachments:** Figure 1. Records Search Map





-  Project Boundary
-  One-Mile Buffer

SOURCE: USGS 7.5-Minute Series La Mesa and El Cajon Quadrangles  
 Township 16 S / Range 1 W / Section 16



Records Search Map

Jericho Road Project



February 19, 2024

15823

Ms. Rebecca Osuna, Chairperson  
Inaja-Cosmit Band of Indians  
2005 S. Escondido Blvd.  
Escondido, CA 92025

**Subject: Information Request for the 9407 Jericho Road Residential Project, City of La Mesa, San Diego County, California**

Dear Ms. Osuna,

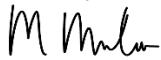
The 9407 Jericho Road Residential Project (project) is located at 9407 Jericho Road, in the City of La Mesa, San Diego County, California (Figure 1). The project plans to redevelop the existing site and construct 73 three-story townhomes on a 3.49-acre site. This project falls on Section 16, Township 16 South, Range 1 West in the La Mesa and El Cajon U.S. Geological Survey (USGS) 7.5-minute Quadrangles.

As part of the cultural resources study prepared for the proposed project, Dudek contacted the Native American Heritage Commission (NAHC) conducted a Sacred Lands file (SLF) search and a list of Native American individuals and/or tribal organizations who may have knowledge of cultural resources in or near the proposed project area. The NAHC emailed a response on February 15, 2024, which stated that the SLF search identified the presence of Native American cultural resources in the immediate project area.

Please note that this letter does not constitute Assembly Bill (AB) 52 notification or initiation of consultation. Tribes that wish to be notified of projects for the purposes of consultation must contact the lead agency, City of La Mesa (City) in writing (pursuant to Public Resources Code Section 21080.3.1 (b)).

If you have any information or concerns pertaining to such information, please contact me by phone or email.

Respectfully,

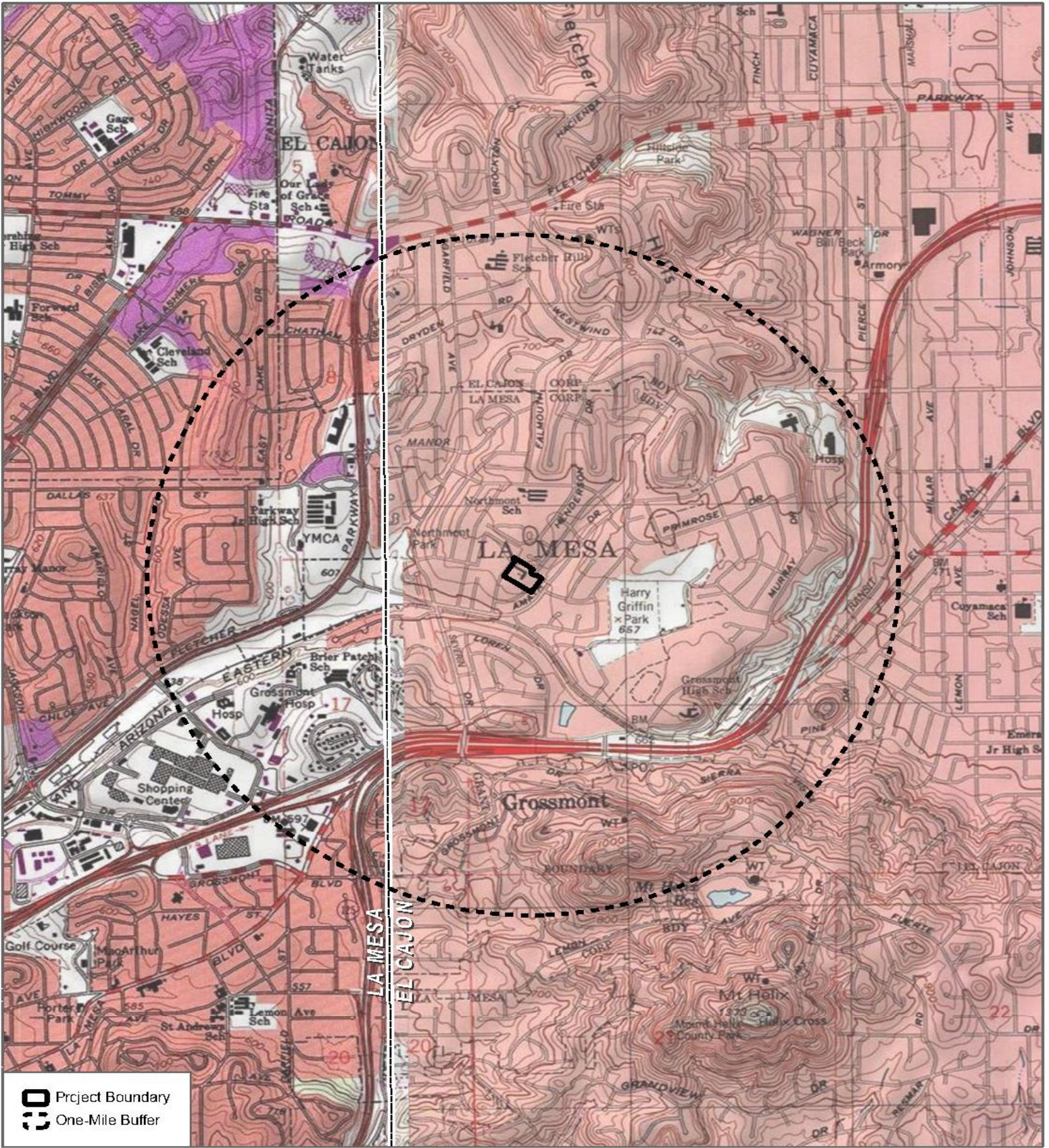


---

Makayla Murillo, B.A.  
Archaeologist  
DUDEK  
Phone: (760) 846-5874  
Email: mmurillo@dudek.com

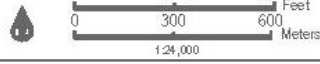
**Attachments:** Figure 1. Records Search Map





SOURCE: USGS 7.5-Minute Series La Mesa and El Cajon Quadrangles  
 Township 16 S / Range 1 W / Section 16

**DUDEK**



Records Search Map

Jericho Road Project



# DUDEK

MAIN OFFICE  
605 THIRD STREET  
ENCINITAS, CALIFORNIA 92024  
T 800.450.1818 F 760.632.0164

February 19, 2024

15823

Ms. Bernice Paipa, Vice Spokesperson  
Kumeyaay Cultural Repatriation Committee  
P.O. Box 63  
Santa Ysabel, CA 92070

**Subject: Information Request for the 9407 Jericho Road Residential Project, City of La Mesa, San Diego County, California**

Dear Ms. Paipa,

The 9407 Jericho Road Residential Project (project) is located at 9407 Jericho Road, in the City of La Mesa, San Diego County, California (Figure 1). The project plans to redevelop the existing site and construct 73 three-story townhomes on a 3.49-acre site. This project falls on Section 16, Township 16 South, Range 1 West in the La Mesa and El Cajon U.S. Geological Survey (USGS) 7.5-minute Quadrangles.

As part of the cultural resources study prepared for the proposed project, Dudek contacted the Native American Heritage Commission (NAHC) conducted a Sacred Lands file (SLF) search and a list of Native American individuals and/or tribal organizations who may have knowledge of cultural resources in or near the proposed project area. The NAHC emailed a response on February 15, 2024, which stated that the SLF search identified the presence of Native American cultural resources in the immediate project area.

Please note that this letter does not constitute Assembly Bill (AB) 52 notification or initiation of consultation. Tribes that wish to be notified of projects for the purposes of consultation must contact the lead agency, City of La Mesa (City) in writing (pursuant to Public Resources Code Section 21080.3.1 (b)).

If you have any information or concerns pertaining to such information, please contact me by phone or email.

Respectfully,

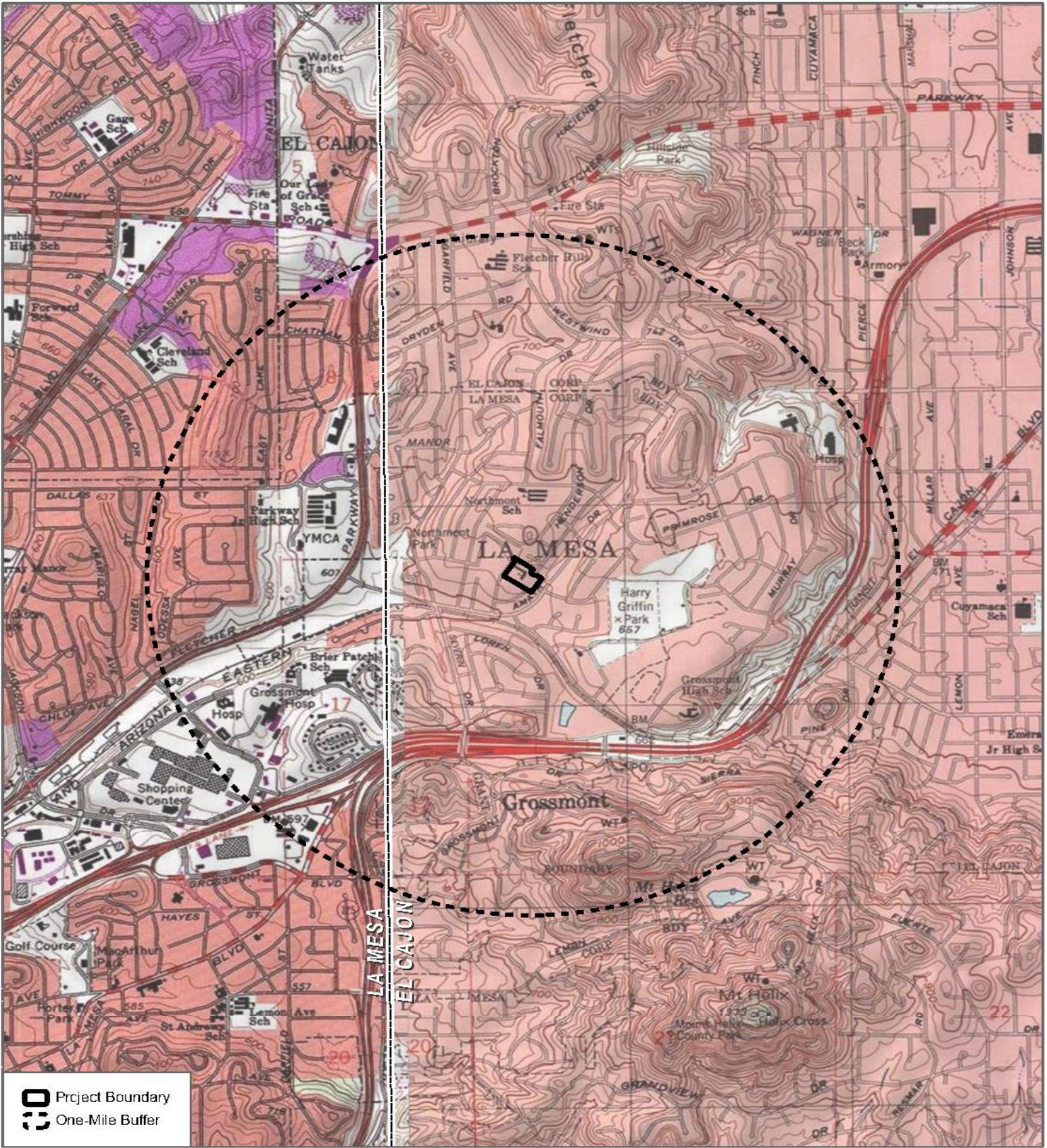


---

Makayla Murillo, B.A.  
Archaeologist  
DUDEK  
Phone: (760) 846-5874  
Email: mmurillo@dudek.com

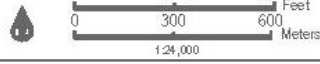
**Attachments:** Figure 1. Records Search Map





SOURCE: USGS 7.5-Minute Series La Mesa and El Cajon Quadrangles  
 Township 16 S / Range 1 W / Section 16

**DUDEK**



Records Search Map

Jericho Road Project



# DUDEK

MAIN OFFICE  
605 THIRD STREET  
ENCINITAS, CALIFORNIA 92024  
T 800.450.1818 F 760.632.0164

February 19, 2024

15823

Ms. Gwendolyn Parada, Chairperson  
La Posta Band of Diegueno Mission Indians  
8 Crestwood Rd.  
Boulevard, CA 91905

**Subject: Information Request for the 9407 Jericho Road Residential Project, City of La Mesa, San Diego County, California**

Dear Ms. Parada,

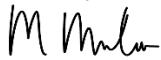
The 9407 Jericho Road Residential Project (project) is located at 9407 Jericho Road, in the City of La Mesa, San Diego County, California (Figure 1). The project plans to redevelop the existing site and construct 73 three-story townhomes on a 3.49-acre site. This project falls on Section 16, Township 16 South, Range 1 West in the La Mesa and El Cajon U.S. Geological Survey (USGS) 7.5-minute Quadrangles.

As part of the cultural resources study prepared for the proposed project, Dudek contacted the Native American Heritage Commission (NAHC) conducted a Sacred Lands file (SLF) search and a list of Native American individuals and/or tribal organizations who may have knowledge of cultural resources in or near the proposed project area. The NAHC emailed a response on February 15, 2024, which stated that the SLF search identified the presence of Native American cultural resources in the immediate project area.

Please note that this letter does not constitute Assembly Bill (AB) 52 notification or initiation of consultation. Tribes that wish to be notified of projects for the purposes of consultation must contact the lead agency, City of La Mesa (City) in writing (pursuant to Public Resources Code Section 21080.3.1 (b)).

If you have any information or concerns pertaining to such information, please contact me by phone or email.

Respectfully,

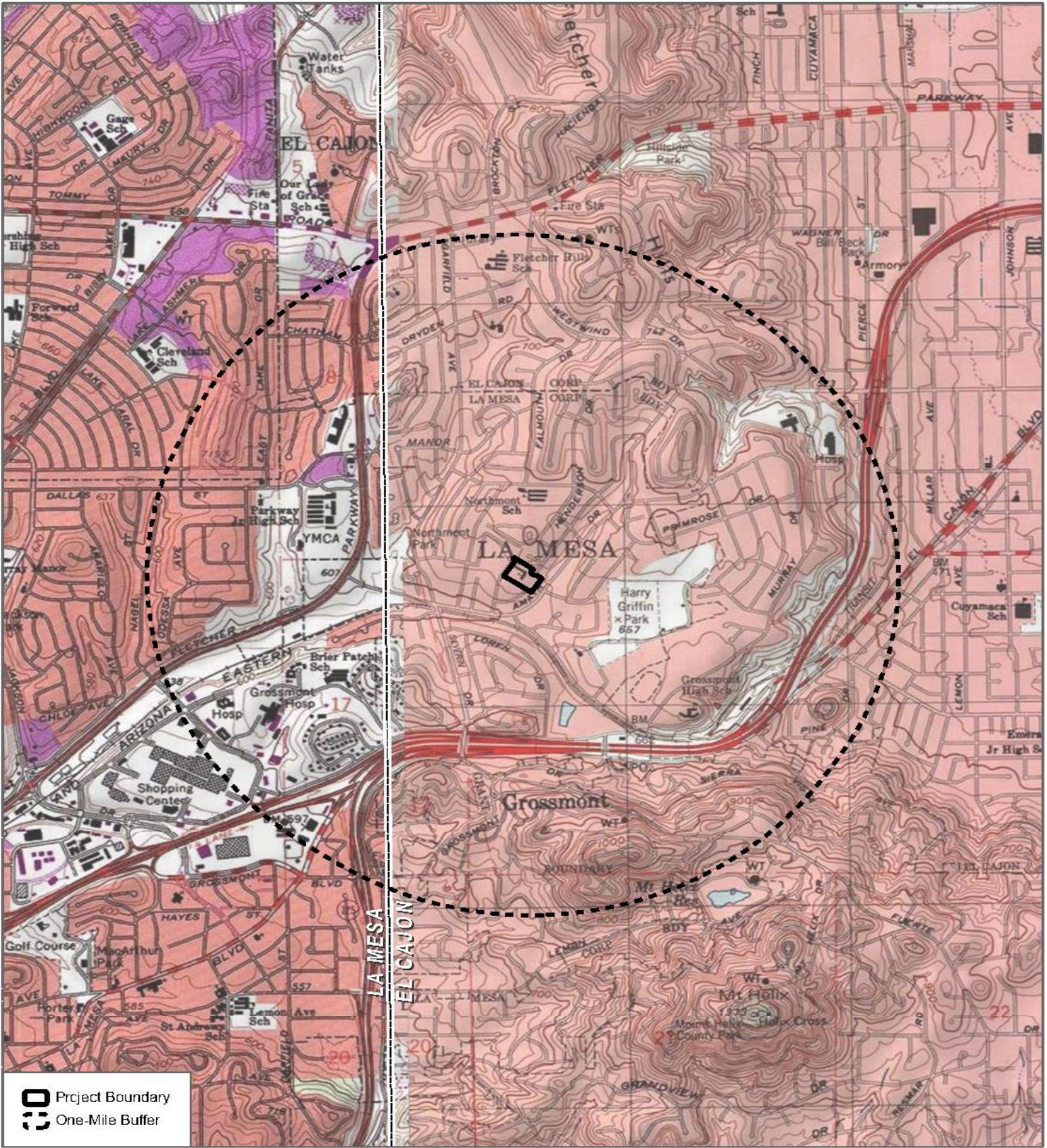


---

Makayla Murillo, B.A.  
Archaeologist  
DUDEK  
Phone: (760) 846-5874  
Email: mmurillo@dudek.com

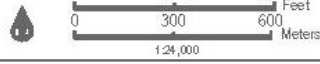
**Attachments:** Figure 1. Records Search Map





SOURCE: USGS 7.5-Minute Series La Mesa and El Cajon Quadrangles  
 Township 16 S / Range 1 W / Section 16

**DUDEK**



Records Search Map

Jericho Road Project



# DUDEK

MAIN OFFICE  
605 THIRD STREET  
ENCINITAS, CALIFORNIA 92024  
T 800.450.1818 F 760.632.0164

February 19, 2024

15823

Mr. Ernest Pingleton, Tribal Historic Officer  
Viejas Band of Kumeyaay Indians  
1 Viejas Grade Rd.  
Alpine, CA 91901

**Subject: Information Request for the 9407 Jericho Road Residential Project, City of La Mesa, San Diego County, California**

Dear Mr. Pingleton,

The 9407 Jericho Road Residential Project (project) is located at 9407 Jericho Road, in the City of La Mesa, San Diego County, California (Figure 1). The project plans to redevelop the existing site and construct 73 three-story townhomes on a 3.49-acre site. This project falls on Section 16, Township 16 South, Range 1 West in the La Mesa and El Cajon U.S. Geological Survey (USGS) 7.5-minute Quadrangles.

As part of the cultural resources study prepared for the proposed project, Dudek contacted the Native American Heritage Commission (NAHC) conducted a Sacred Lands file (SLF) search and a list of Native American individuals and/or tribal organizations who may have knowledge of cultural resources in or near the proposed project area. The NAHC emailed a response on February 15, 2024, which stated that the SLF search identified the presence of Native American cultural resources in the immediate project area.

Please note that this letter does not constitute Assembly Bill (AB) 52 notification or initiation of consultation. Tribes that wish to be notified of projects for the purposes of consultation must contact the lead agency, City of La Mesa (City) in writing (pursuant to Public Resources Code Section 21080.3.1 (b)).

If you have any information or concerns pertaining to such information, please contact me by phone or email.

Respectfully,

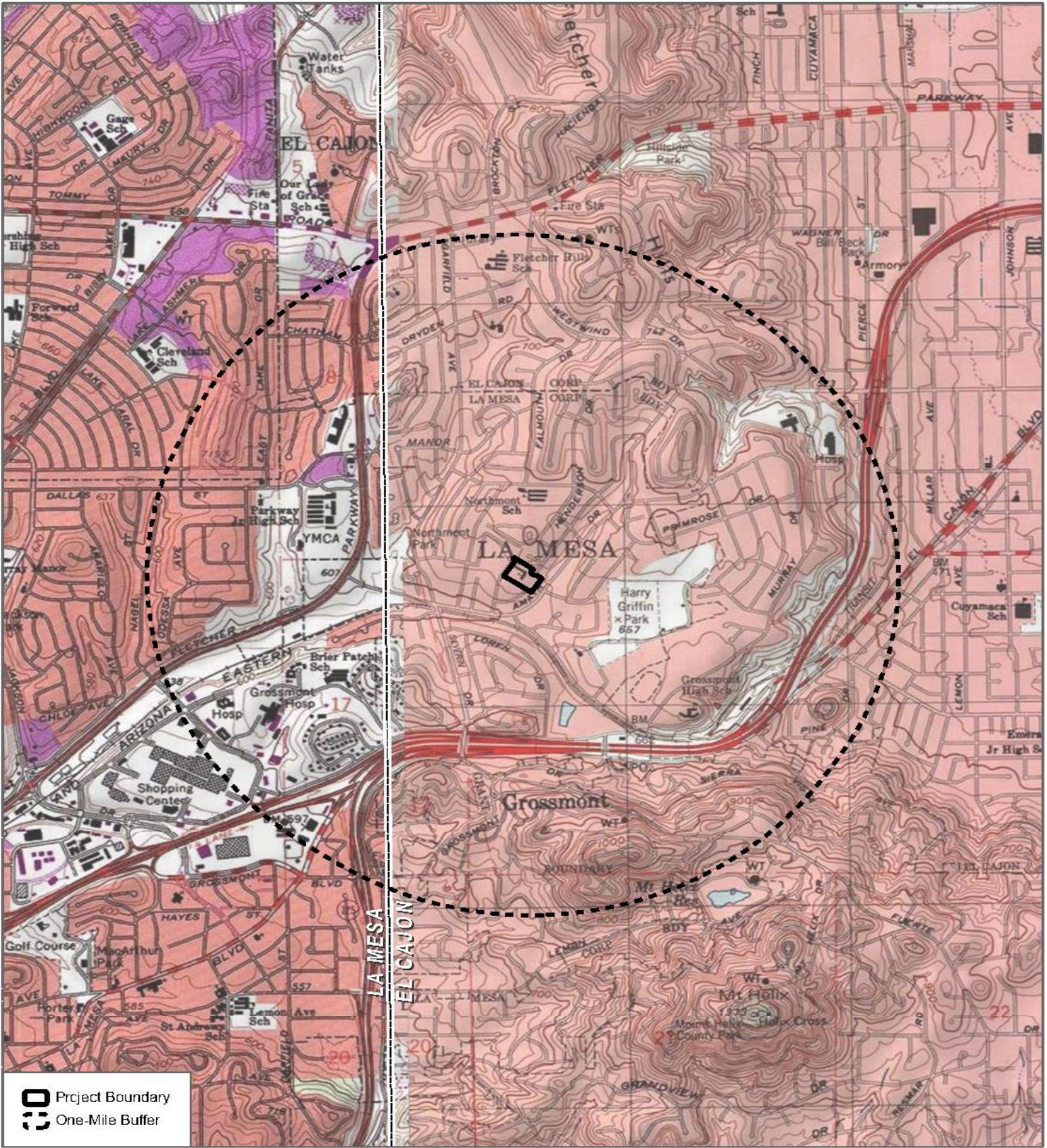



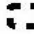
---

Makayla Murillo, B.A.  
Archaeologist  
DUDEK  
Phone: (760) 846-5874  
Email: mmurillo@dudek.com

**Attachments:** Figure 1. Records Search Map

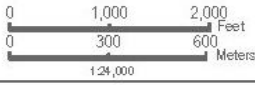




 Project Boundary  
 One-Mile Buffer

SOURCE: USGS 7.5-Minute Series La Mesa and El Cajon Quadrangles  
 Township 16 S / Range 1 W / Section 16

**DUDEK** 



Records Search Map

Jericho Road Project



# DUDEK

MAIN OFFICE  
605 THIRD STREET  
ENCINITAS, CALIFORNIA 92024  
T 800.450.1818 F 760.632.0164

February 19, 2024

15823

Mr. Robert Pinto, Chairperson  
Ewiaapaayp Band of Kumeyaay Indians  
4054 Willow Rd.  
Alpine, CA 91901

**Subject: Information Request for the 9407 Jericho Road Residential Project, City of La Mesa, San Diego County, California**

Dear Mr. Pinto,

The 9407 Jericho Road Residential Project (project) is located at 9407 Jericho Road, in the City of La Mesa, San Diego County, California (Figure 1). The project plans to redevelop the existing site and construct 73 three-story townhomes on a 3.49-acre site. This project falls on Section 16, Township 16 South, Range 1 West in the La Mesa and El Cajon U.S. Geological Survey (USGS) 7.5-minute Quadrangles.

As part of the cultural resources study prepared for the proposed project, Dudek contacted the Native American Heritage Commission (NAHC) conducted a Sacred Lands file (SLF) search and a list of Native American individuals and/or tribal organizations who may have knowledge of cultural resources in or near the proposed project area. The NAHC emailed a response on February 15, 2024, which stated that the SLF search identified the presence of Native American cultural resources in the immediate project area.

Please note that this letter does not constitute Assembly Bill (AB) 52 notification or initiation of consultation. Tribes that wish to be notified of projects for the purposes of consultation must contact the lead agency, City of La Mesa (City) in writing (pursuant to Public Resources Code Section 21080.3.1 (b)).

If you have any information or concerns pertaining to such information, please contact me by phone or email.

Respectfully,

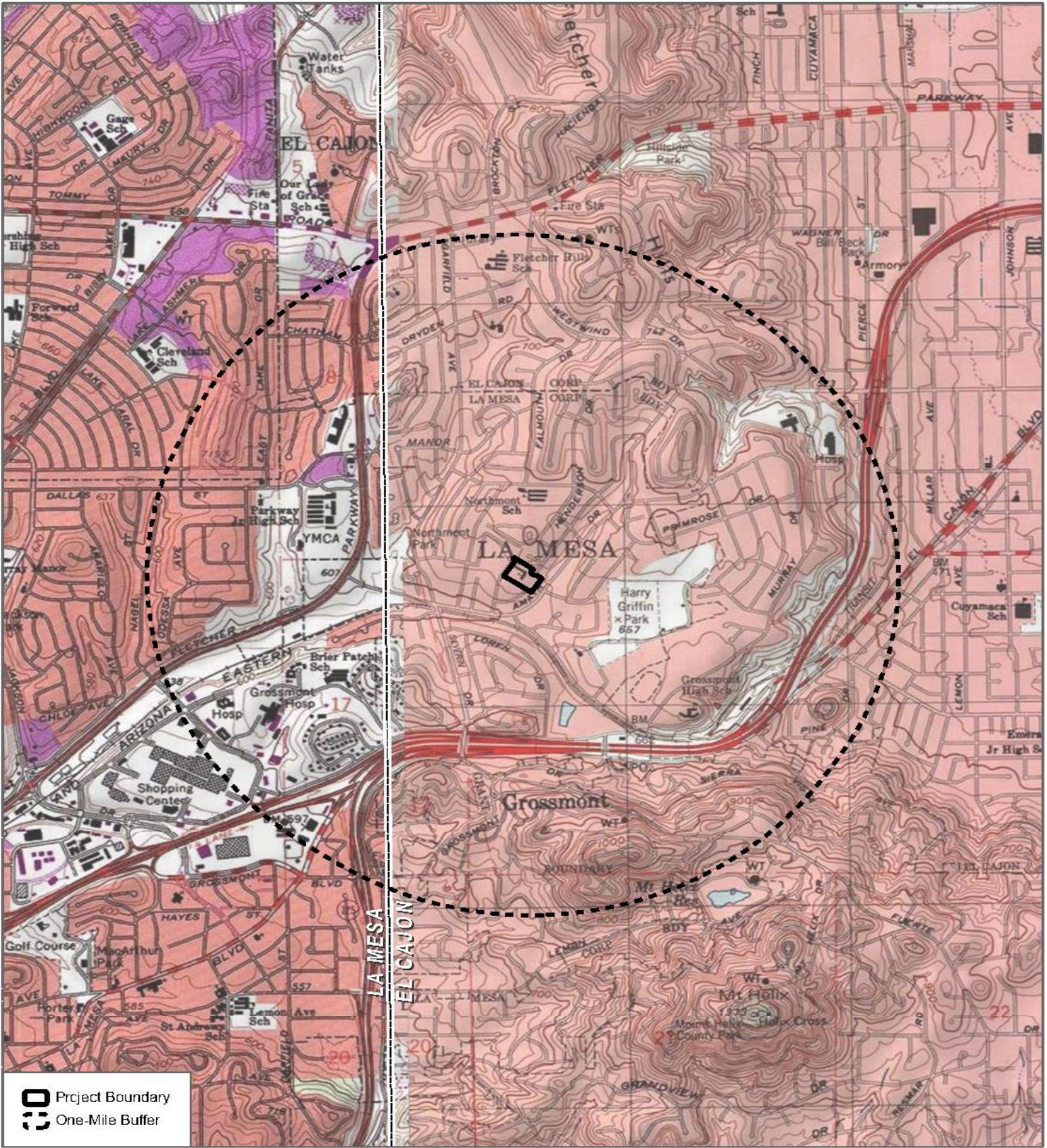


---

Makayla Murillo, B.A.  
Archaeologist  
DUDEK  
Phone: (760) 846-5874  
Email: mmurillo@dudek.com

**Attachments:** Figure 1. Records Search Map





SOURCE: USGS 7.5-Minute Series La Mesa and El Cajon Quadrangles  
 Township 16 S / Range 1 W / Section 16

**DUDEK**



Records Search Map

Jericho Road Project



# DUDEK

MAIN OFFICE  
605 THIRD STREET  
ENCINITAS, CALIFORNIA 92024  
T 800.450.1818 F 760.632.0164

February 19, 2024

15823

Ms. Erica Pinto, Chairperson  
Jamul Indian Village  
P.O. Box 612  
Jamul, CA 91935

**Subject: Information Request for the 9407 Jericho Road Residential Project, City of La Mesa, San Diego County, California**

Dear Ms. Pinto,

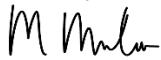
The 9407 Jericho Road Residential Project (project) is located at 9407 Jericho Road, in the City of La Mesa, San Diego County, California (Figure 1). The project plans to redevelop the existing site and construct 73 three-story townhomes on a 3.49-acre site. This project falls on Section 16, Township 16 South, Range 1 West in the La Mesa and El Cajon U.S. Geological Survey (USGS) 7.5-minute Quadrangles.

As part of the cultural resources study prepared for the proposed project, Dudek contacted the Native American Heritage Commission (NAHC) conducted a Sacred Lands file (SLF) search and a list of Native American individuals and/or tribal organizations who may have knowledge of cultural resources in or near the proposed project area. The NAHC emailed a response on February 15, 2024, which stated that the SLF search identified the presence of Native American cultural resources in the immediate project area.

Please note that this letter does not constitute Assembly Bill (AB) 52 notification or initiation of consultation. Tribes that wish to be notified of projects for the purposes of consultation must contact the lead agency, City of La Mesa (City) in writing (pursuant to Public Resources Code Section 21080.3.1 (b)).

If you have any information or concerns pertaining to such information, please contact me by phone or email.

Respectfully,

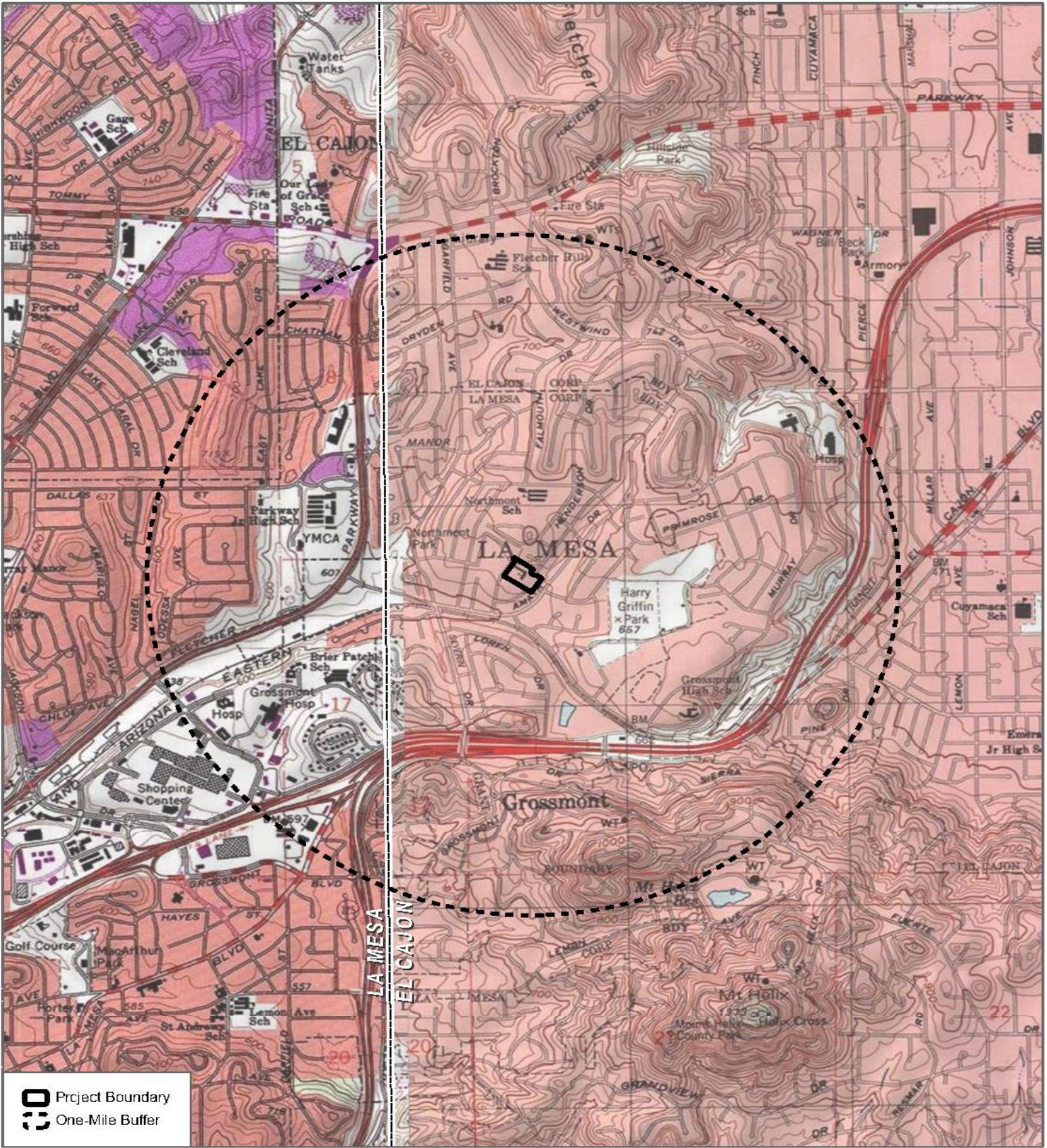


---

Makayla Murillo, B.A.  
Archaeologist  
DUDEK  
Phone: (760) 846-5874  
Email: mmurillo@dudek.com

**Attachments:** Figure 1. Records Search Map





SOURCE: USGS 7.5-Minute Series La Mesa and El Cajon Quadrangles  
 Township 16 S / Range 1 W / Section 16

**DUDEK**



Records Search Map

Jericho Road Project



# DUDEK

MAIN OFFICE  
605 THIRD STREET  
ENCINITAS, CALIFORNIA 92024  
T 800.450.1818 F 760.632.0164

February 19, 2024

15823

Ms. Angela Elliott Santos, Chairperson  
Manzanita Band of Kumeyaay Nation  
P.O. Box 1302  
Boulevard, CA 91905

**Subject: Information Request for the 9407 Jericho Road Residential Project, City of La Mesa, San Diego County, California**

Dear Ms. Santos,

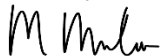
The 9407 Jericho Road Residential Project (project) is located at 9407 Jericho Road, in the City of La Mesa, San Diego County, California (Figure 1). The project plans to redevelop the existing site and construct 73 three-story townhomes on a 3.49-acre site. This project falls on Section 16, Township 16 South, Range 1 West in the La Mesa and El Cajon U.S. Geological Survey (USGS) 7.5-minute Quadrangles.

As part of the cultural resources study prepared for the proposed project, Dudek contacted the Native American Heritage Commission (NAHC) conducted a Sacred Lands file (SLF) search and a list of Native American individuals and/or tribal organizations who may have knowledge of cultural resources in or near the proposed project area. The NAHC emailed a response on February 15, 2024, which stated that the SLF search identified the presence of Native American cultural resources in the immediate project area.

Please note that this letter does not constitute Assembly Bill (AB) 52 notification or initiation of consultation. Tribes that wish to be notified of projects for the purposes of consultation must contact the lead agency, City of La Mesa (City) in writing (pursuant to Public Resources Code Section 21080.3.1 (b)).

If you have any information or concerns pertaining to such information, please contact me by phone or email.

Respectfully,

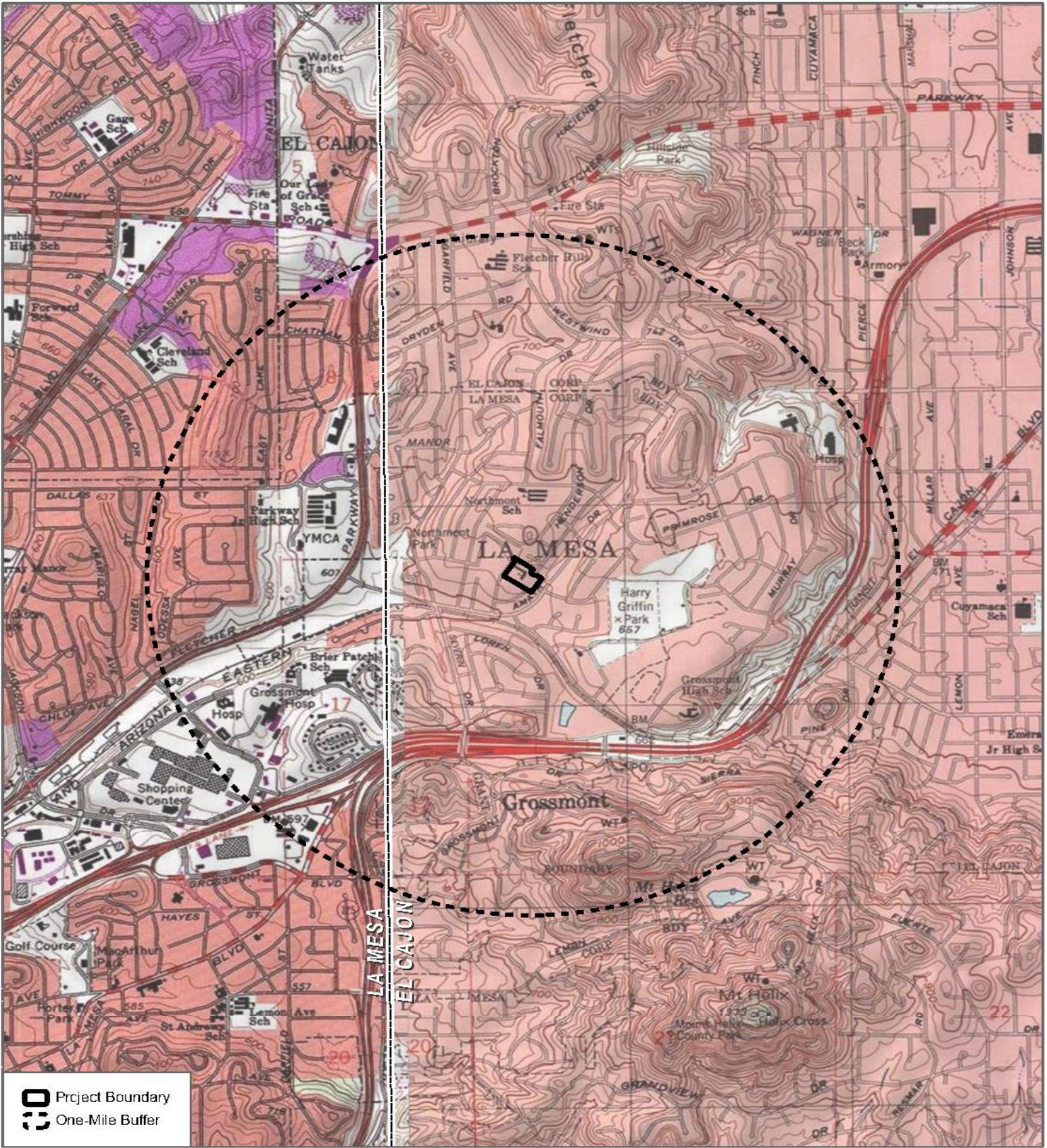



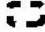
---

Makayla Murillo, B.A.  
Archaeologist  
DUDEK  
Phone: (760) 846-5874  
Email: mmurillo@dudek.com

**Attachments:** Figure 1. Records Search Map

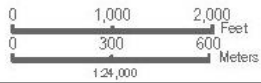




-  Project Boundary
-  One-Mile Buffer

SOURCE: USGS 7.5-Minute Series La Mesa and El Cajon Quadrangles  
 Township 16 S / Range 1 W / Section 16

**DUDEK** 



Records Search Map

Jericho Road Project



# DUDEK

MAIN OFFICE  
605 THIRD STREET  
ENCINITAS, CALIFORNIA 92024  
T 800.450.1818 F 760.632.0164

February 19, 2024

15823

Mr. Ray Teran, Resource Manager  
Viejas Band of Kumeyaay Indians  
1 Viejas Grade Rd.  
Alpine, CA 91901

**Subject: Information Request for the 9407 Jericho Road Residential Project, City of La Mesa, San Diego County, California**

Dear Mr. Teran,

The 9407 Jericho Road Residential Project (project) is located at 9407 Jericho Road, in the City of La Mesa, San Diego County, California (Figure 1). The project plans to redevelop the existing site and construct 73 three-story townhomes on a 3.49-acre site. This project falls on Section 16, Township 16 South, Range 1 West in the La Mesa and El Cajon U.S. Geological Survey (USGS) 7.5-minute Quadrangles.

As part of the cultural resources study prepared for the proposed project, Dudek contacted the Native American Heritage Commission (NAHC) conducted a Sacred Lands file (SLF) search and a list of Native American individuals and/or tribal organizations who may have knowledge of cultural resources in or near the proposed project area. The NAHC emailed a response on February 15, 2024, which stated that the SLF search identified the presence of Native American cultural resources in the immediate project area.

Please note that this letter does not constitute Assembly Bill (AB) 52 notification or initiation of consultation. Tribes that wish to be notified of projects for the purposes of consultation must contact the lead agency, City of La Mesa (City) in writing (pursuant to Public Resources Code Section 21080.3.1 (b)).

If you have any information or concerns pertaining to such information, please contact me by phone or email.

Respectfully,

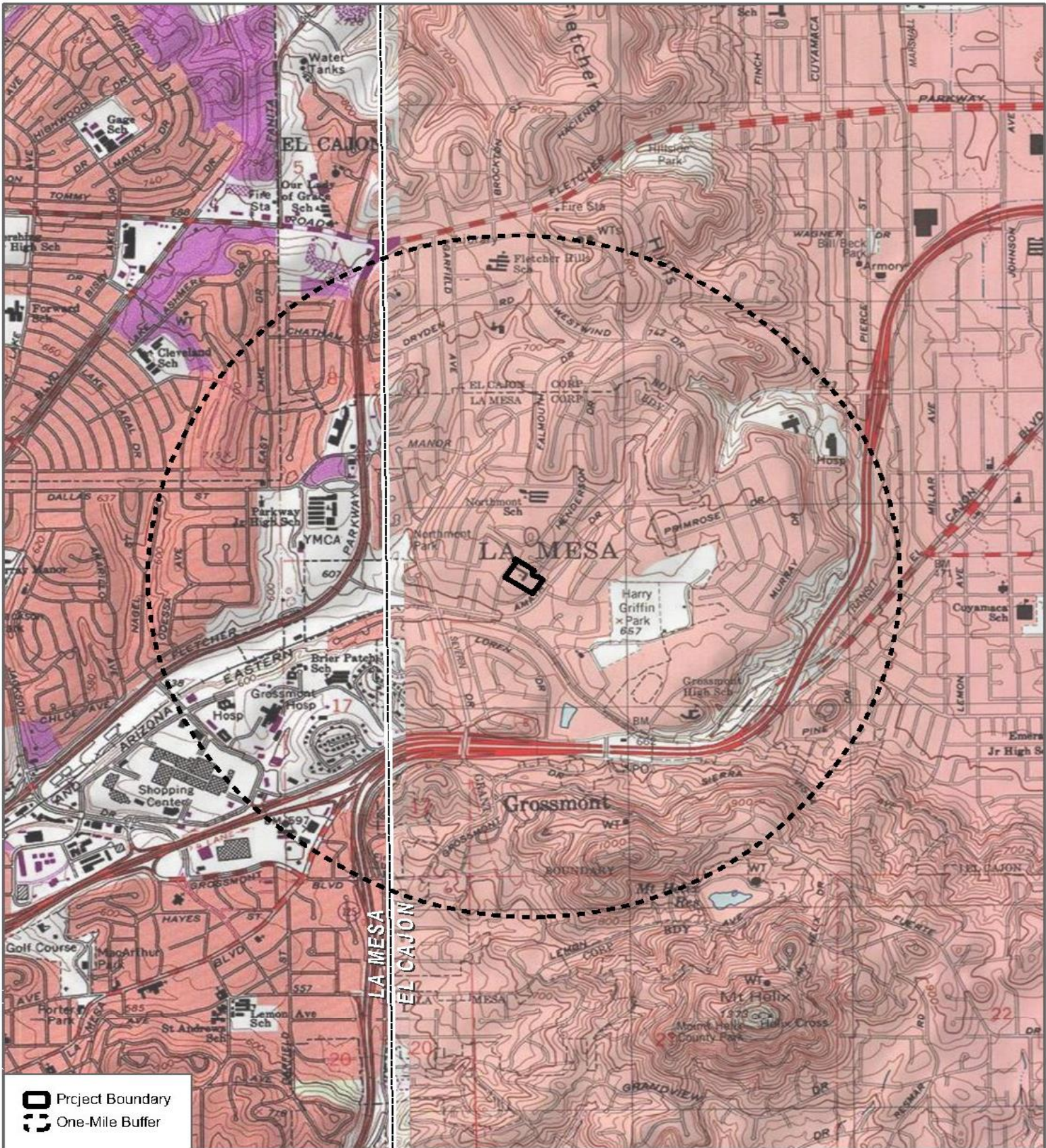


---

Makayla Murillo, B.A.  
Archaeologist  
DUDEK  
Phone: (760) 846-5874  
Email: [mmurillo@dudek.com](mailto:mmurillo@dudek.com)

**Attachments:** Figure 1: Records Search Map





SOURCE: USGS 7.5-Minute Series La Mesa and El Cajon Quadangles  
 Township 16 S / Range 1 W / Section 16



Records Search Map

Jericho Road Project