



Cawelo Water District

NOTICE OF INTENT TO ADOPT AN INITIAL STUDY- MITIGATED NEGATIVE DECLARATION

To: All Interested Parties

From: Cawelo Water District
17207 Industrial Farm Road
Bakersfield, CA 93308

PROJECT INFORMATION

PROJECT NAME: Cawelo Collection Basin and Pipeline Project
LEAD AGENCY: Cawelo Water District

The Cawelo Water District (CWD), as the lead agency under the California Environmental Quality Act (CEQA), has prepared an Initial Study (IS) with the intent to adopt a Mitigated Negative Declaration (MND) for the Cawelo Collection Basin and Pipeline Project (proposed Project).

PROJECT DESCRIPTION AND LOCATION: The Project site is located approximately one mile north of the intersection of Highway 65 and Lerdo Highway in Kern County, CA (**Figure 1**). The proposed Project includes construction of an inflow canal, a collection basin, and a two-mile long pipeline to convey treated oil produced water from the Trio Petroleum LLC (Trio) facility to existing CWD Distribution Canal for direct application to irrigated crops.

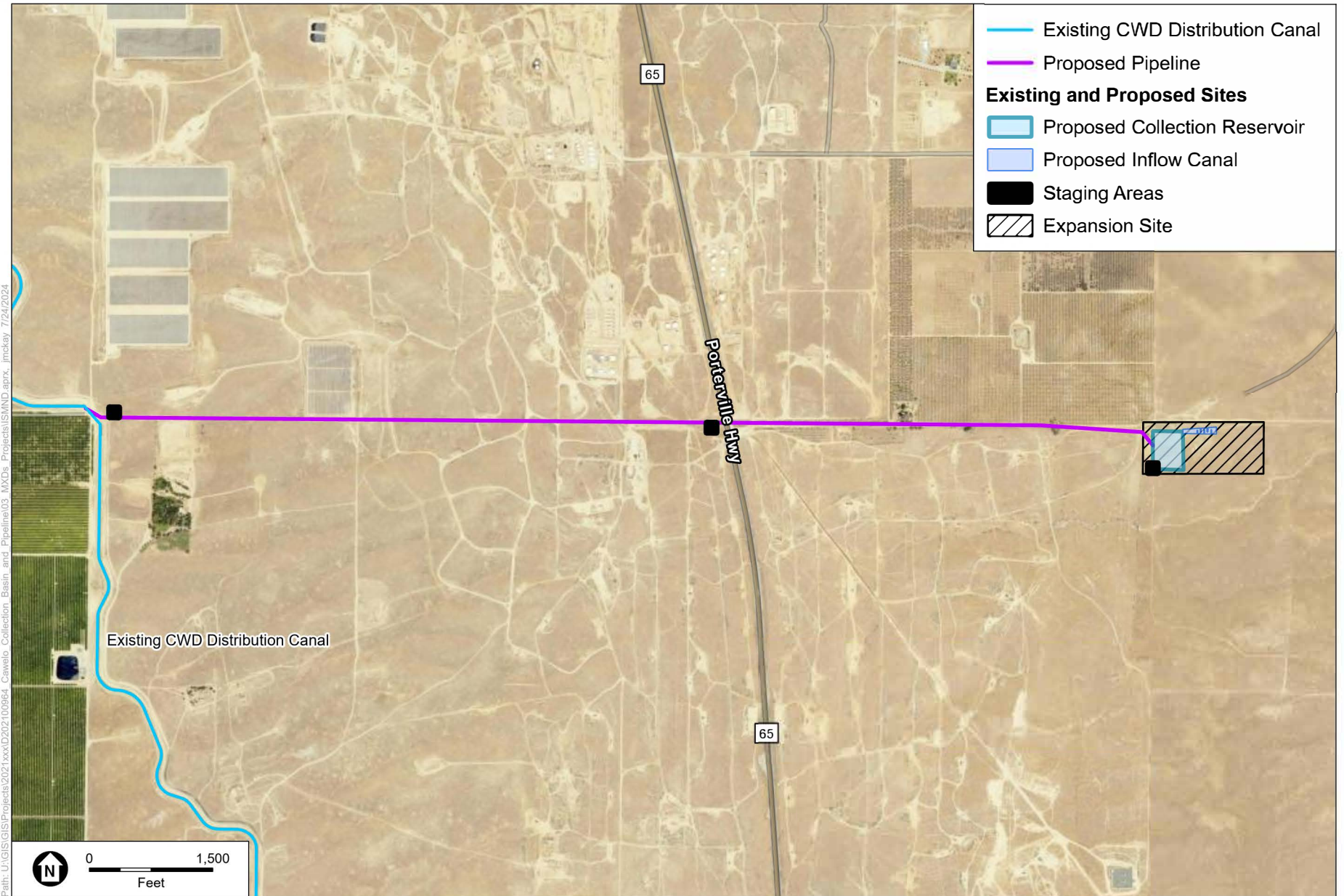
ENVIRONMENTAL EFFECTS: The IS-MND describes potentially significant impacts to biological resources, cultural resources, geology and soils, transportation, and wildfire. Mitigation measures have been included to reduce impacts to less-than-significant levels. All other resource areas evaluated were found to have no impact or to be less than significant. The project is not located at a site known to have presence of any hazardous waste facilities pursuant to Government Code Section 65962.5

PUBLIC REVIEW PERIOD: The IS-MND is being circulated for public review and comment for a period of 30 days, beginning September 24, 2024 and ending October 24, 2024. Written comments should be submitted and received no later than 5:00 P.M, Pacific Standard Time, on October 24, 2024. Written comments should be sent to: *David Ansolabehere*, 17207 Industrial Farm Rd, Bakersfield, CA 93308, or email comments to: dansolabehere@cawelowd.org. For any questions or for distribution of a hard copy of the IS-MND, please use the contact information above.

AVAILABILITY OF ENVIRONMENTAL DOCUMENTATION: Hardcopies of the IS-MND have been delivered to the following library/lead agency:

- Rathbun Branch Library, 200 W. China Grade Loop, Bakersfield, CA 93308
- CWD, 17207 Industrial Farm Rd, Bakersfield, CA 93308

An electronic copy is also posted on the web at: <https://www.cawelowd.org/recycled-produced-water/Collection-Basin-Pipeline-Project>



SOURCE: USDA, 2019; CWD, 2021; ESA, 2024.

Cawelo Collection Basin and Pipeline Project
Figure 1
 Proposed Project