

Legend

Project Site

Source:
1) ESRI World Topo Map

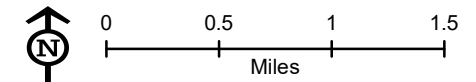
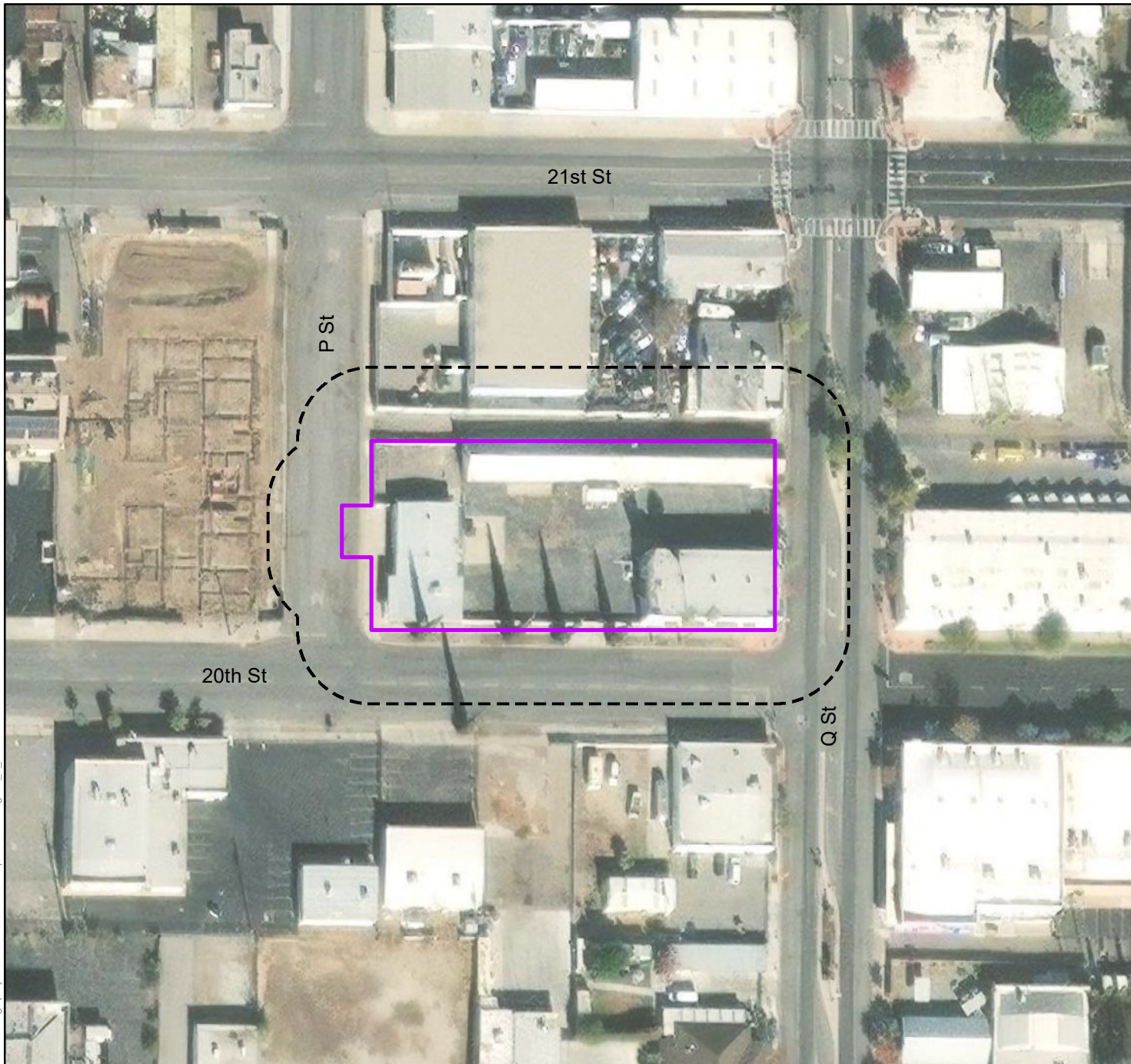




FIGURE 1
Project Vicinity
Former Manufactured Gas Plant
Bakersfield, Kern County, CA



W:\cvs01\gisproj\PG&E\Bakersfield\MapFiles\BIO\Figure_1_240214.mxd



Legend

-  Project Site (0.79 acre)
-  Biological Study Area (1.95 acres)

Source:
1) ESRI World Imagery, 11/24/2022

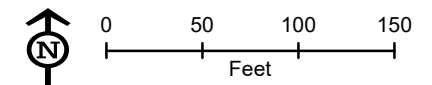
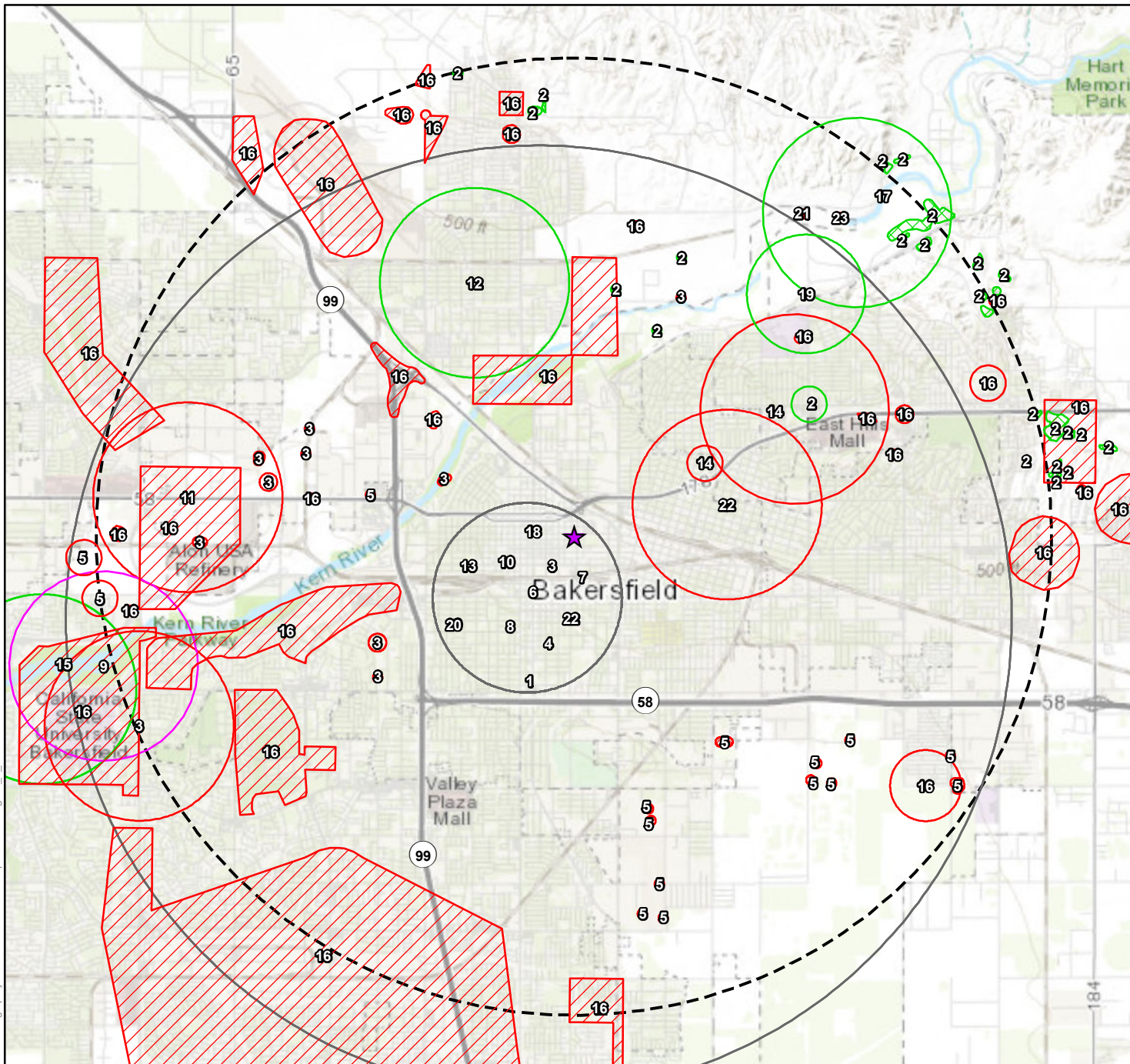


FIGURE 2
Biological Study Area
Former Manufactured Gas Plant
Bakersfield, Kern County, CA





Legend

- ★ Project Site/BSA
- [- - -] BSA Buffer (5 miles)
- CNDDDB Occurrences***
- Plant (80 m/262 ft)
- ▨ Plant (specific)
- Plant (circular)
- Animal (80 m/262 ft)
- ▨ Animal (specific)
- ▨ Animal (non-specific)
- Animal (circular)
- ▭ Terrestrial Community (circular)
- ▭ Multiple (circular)

***CNDDDB Occurrence Labels**

- | | |
|--|---|
| 1. American badger | 12. Hoover's eriastrum |
| 2. Bakersfield cactus | 13. Horn's milk-vetch |
| 3. Bakersfield legless lizard | 14. Monarch - California overwintering population |
| 4. Blunt-nosed leopard lizard | 15. Recurved larkspur |
| 5. Burrowing owl | 16. San Joaquin kit fox |
| 6. California glossy snake | 17. San Joaquin woollythreads |
| 7. California satintail | 18. Swainson's hawk |
| 8. Crotch bumble bee | 19. Tejon poppy |
| 9. Great Valley Cottonwood Riparian Forest | 20. Tulare grasshopper mouse |
| 10. Hispid salty bird's-beak | 21. Valley elderberry longhorn beetle |
| 11. Hoary bat | 22. Western mastiff bat |
| | 23. Western pond turtle |

Note:
BSA = Biological Study Area
CNDDDB = California Natural Diversity Database
m = meters
ft = feet

Source:
1) ESRI World Topo Map

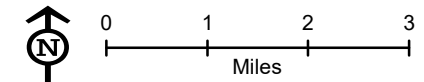


FIGURE 3
CNDDDB Occurrences within 5 Miles of the Biological Study Area
Former Manufactured Gas Plant
Bakersfield, Kern County, CA

