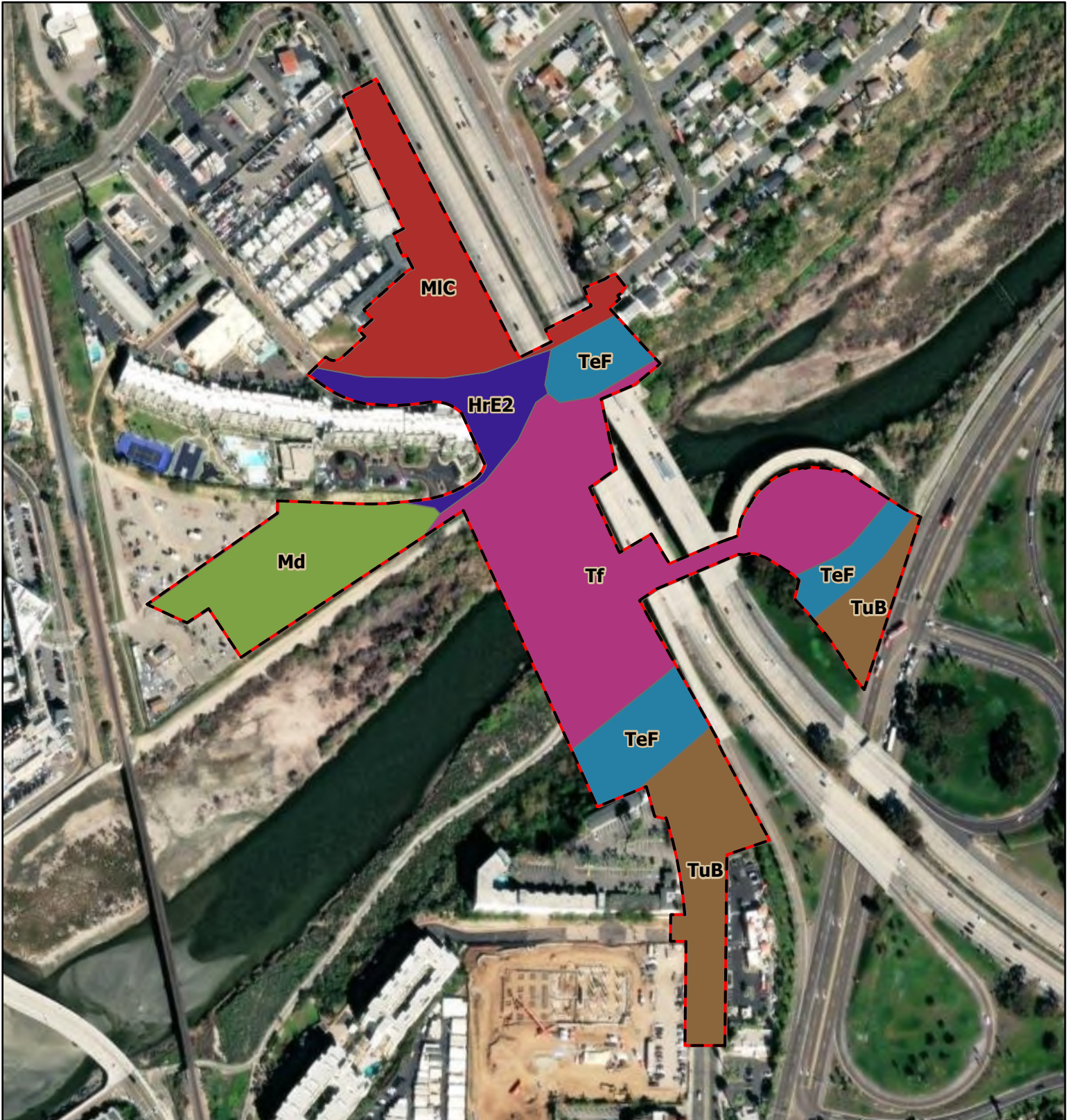


Soils



Coast Highway (Hill Street) Bridge Replacement Project
City of Oceanside, CA



Proposed Project Limits

Soil Types

Huerhuero loam (HrE2)

Made land (Md)

Legend

Marina loamy course sand (MIC)

Terrace escarpments (TeF)

Tidal flats (Tf)

Tujunga sand (TuB)



Figure 4.7-1

Author: I. Ciraulo
Last updated on Thursday, January 25, 2024