



NOTICE OF INTENT TO ADOPT AN INITIAL STUDY/ MITIGATED NEGATIVE DECLARATION FOR THE BALDWIN LAKE AND TULE POND RESTORATION PROJECT

In accordance with Section 15072 of the California Environmental Quality Act (CEQA) Guidelines, this notice is to inform the general public, responsible agencies and Los Angeles County residents that the Los Angeles County Flood Control District (District) has completed a Draft Initial Study/Mitigated Negative Declaration (IS/MND) for the following proposed project:



LEAD AGENCY: Los Angeles County Flood Control District

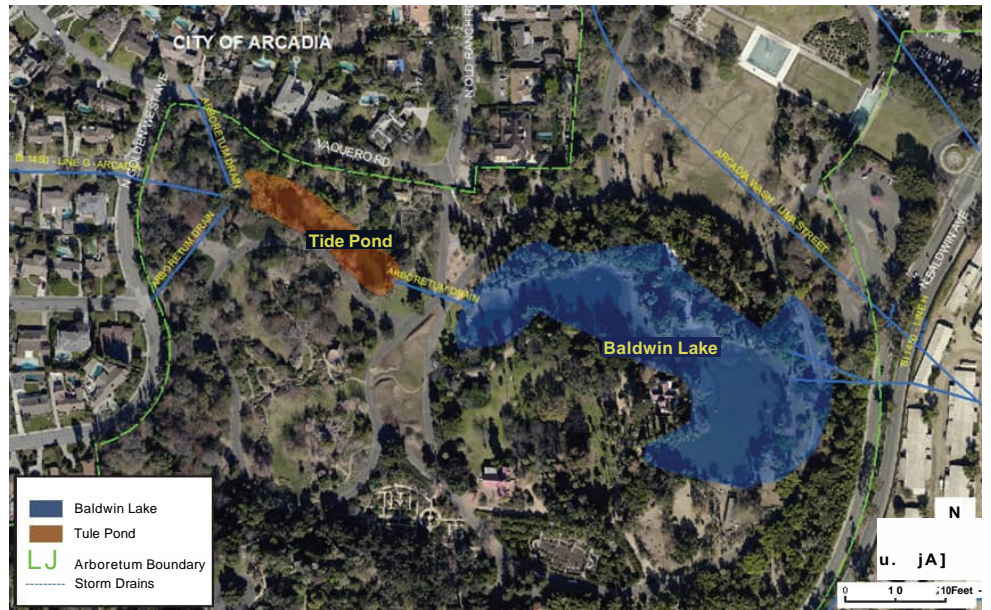
PROJECT TITLE: Baldwin Lake and Tule Pond Restoration Project

PROJECT LOCATION: The Project site is located at the Los Angeles County Arboretum and Botanic Gardens (301 North Baldwin Avenue, Arcadia, CA 91007). The Arboretum is in the northwestern portion of the San Gabriel Valley and is bounded by the Interstate-210 freeway to the north, Baldwin Avenue on the east, Hugo Reid Drive to the south, and Golden West Avenue on the west. Baldwin Lake and Tule Pond are prominent features of the 127-acre Arboretum. The Lake covers 3.4 surface acres, while the Pond covers roughly 0.7 surface acres of the Arboretum grounds. The Lake is located approximately 205 feet east of the Pond.

DESCRIPTION OF THE PROPOSED PROJECT: The Project proposes to remove approximately 65,000 cubic yards of sediment to deepen Baldwin Lake (Lake) and Tule Pond (Pond), install a liner and aeration units at the Lake to improve the aquatic ecosystem; realign one storm drain outlet and reconstruct three storm drain outlets with energy dissipators to minimize erosion; install hydrodynamic separators and media filtration to treat residential runoff. The Project also proposes to restore the Lake's historic retaining wall, improve landscaping to provide operational benefits, and provide additional educational opportunities for Arboretum visitors. The lead agency has determined that the proposed project will not have a significant effect on the environment, with incorporation of mitigation measures. The site is not included on a list of hazardous materials sites compiled pursuant to Government Code Section 65962.5.

PUBLIC REVIEW PERIOD: The IS/MND is being circulated for public and public agency review and comment for a period of 30 days, beginning **November 1, 2024** to **December 2, 2024**. All comments must be submitted in writing and are due no later than 5:00 p.m., on December 2, 2024. Comments regarding the IS/MND should be directed by email or by mail to:

Ms. Grace Komjakraphan-Tek
Los Angeles County Public Works
P.O Box 1460, Alhambra, CA 91802
Email: swqd_ceqa@pw.lacounty.gov



AVAILABILITY OF THE MITIGATED NEGATIVE DECLARATION: The IS/MND can be reviewed at the Project website pw.lacounty.gov/projects/baldwin-lake-tule-pond-restoration/ and a hardcopy is available for in-person viewing on Monday to Thursday from 8:00 a.m. to 5:00 p.m. at the County of Los Angeles, Department of Public Works, Stormwater Planning Division, 900 S. Fremont Avenue, 11th floor, Alhambra, CA 91803.

Para obtener más información en español, visite el sitio web al pw.lacounty.gov/projects/baldwin-lake-tule-pond-restoration/

ADA and Title VI Accommodations: Individuals requiring reasonable accommodations, interpretation services, and materials in other languages or in an alternate format may contact the department coordinator at (626) 458-7901. Individuals with hearing or speech impairment may use California Relay Service 711.

欲了解更多信息 请访问项目网站
pw.lacounty.gov/projects/baldwin-lake-tule-pond-restoration/