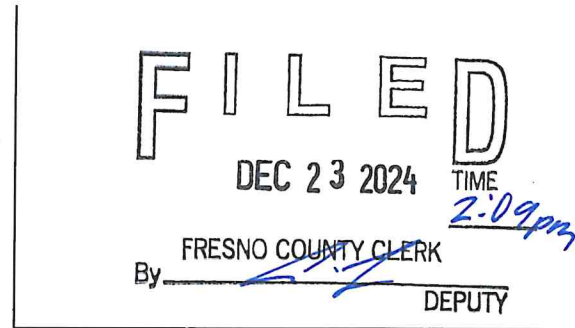




CITY of CLOVIS
 PLANNING & DEVELOPMENT
 1033 FIFTH STREET • CLOVIS, CA 93612

E202410000311



For County Clerk Stamp

NOTICE OF DETERMINATION

■ County Clerk
 P.O. Box 1628
 Fresno, CA 93717

■ Office of Planning and Research
 1400 Tenth Street, Room 121
 Sacramento, CA 95814

Project Title or File No.: RO311, R2024-006, TM6482, PDP2024-002

Environmental Assessment No.: N/A

Lead Agency: City of Clovis

Project Location: South of E. Behymer Avenue between N. Minnewawa Avenue and the N. Peach Avenue alignment in Clovis, CA

Project Description:

The Project consists of approving a finding of a Mitigated Negative Declaration and a Mitigation Monitoring and Reporting Program for Vesting Tentative Tract Map 6482 and Planned Development Permit 2024-002 for approximately 36.92 acres of land located at the southeast corner of Behymer and Peach Avenues in Clovis, CA (see attached Map).

City Action: This is to advise that on December 16, 2024, the City Council approved the above described Project and made the following determinations:

1. The Project will not have a potentially significant effect on the environment.
2. A Mitigated Negative Declaration was prepared for the Project pursuant to the provisions of CEQA and adopted by the City Council.
3. Mitigation Measures were made a condition of approval of the Project.
4. A Mitigation Monitoring Plan was prepared for this Project.
5. Findings were made pursuant to the provisions of CEQA.

This is to certify that the Mitigated Negative Declaration and record of Project approvals are available to the general public for review at the Clovis Planning and Development Services Department located at 1033 Fifth Street, Clovis, CA 93612. Documents may be reviewed between 8 a.m. and 4:30 p.m. Monday through Friday (except holidays).

Contact Person: Marissa Parker, Assistant Planner

Phone: (559) 324-2338

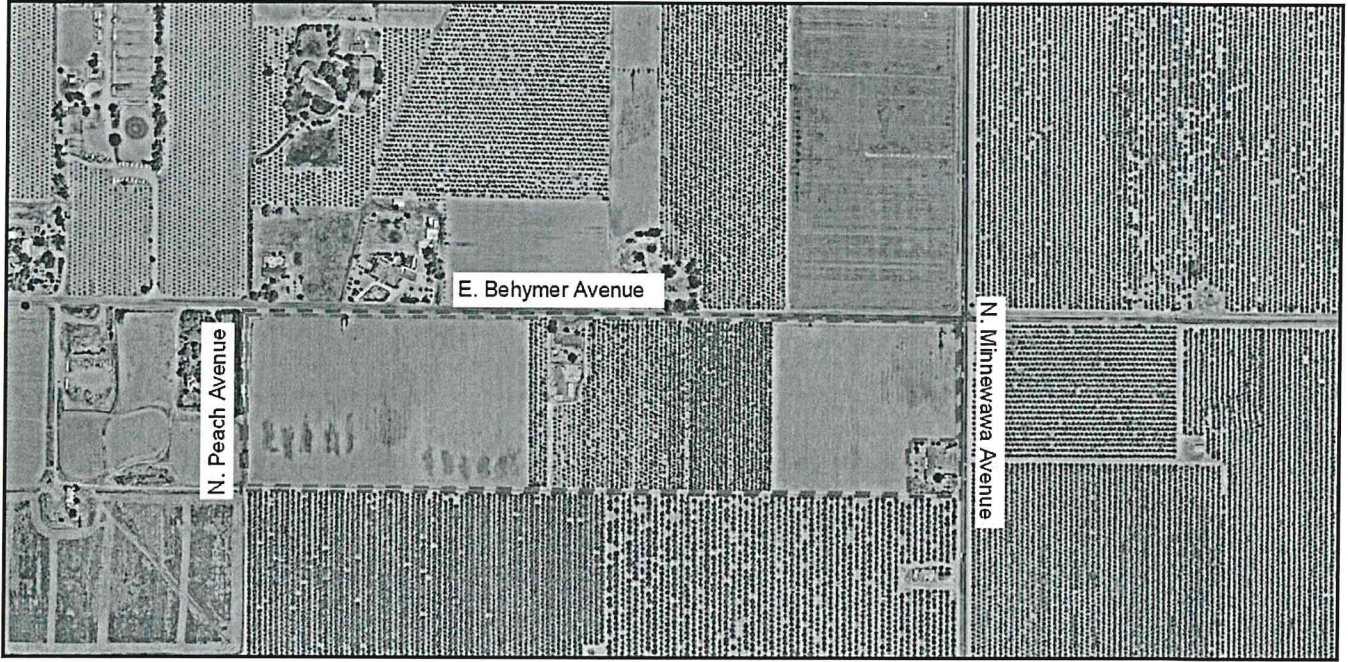
E202410000311



Signature:

Date: December 19, 2024

Project Location



--- Annexation Boundary (±37.92 acres)

--- Project Site (±36.92 acres)

