



Community and Economic Development Planning Division

Jamie Bax
Director

- 200 W. 4th Street
- Suite 3100
- Madera, CA 93637
- (559) 675-7821
- FAX (559) 675-6573
- TDD (559) 675-8970
- mc_planning@maderacounty.com

NOTICE OF INTENT TO ADOPT NEGATIVE DECLARATION 2024-07

This notice is to inform the public and interested agencies that in accordance with the California Environmental Quality Act (CEQA), the County of Madera is circulating Initial Study/Mitigated Negative Declaration (ND) 2024-11 for public comment.

Project/Location: The property is located on the southeast corner of Avenue 27 and Road 14, (14768 Avenue 27), Chowchilla.

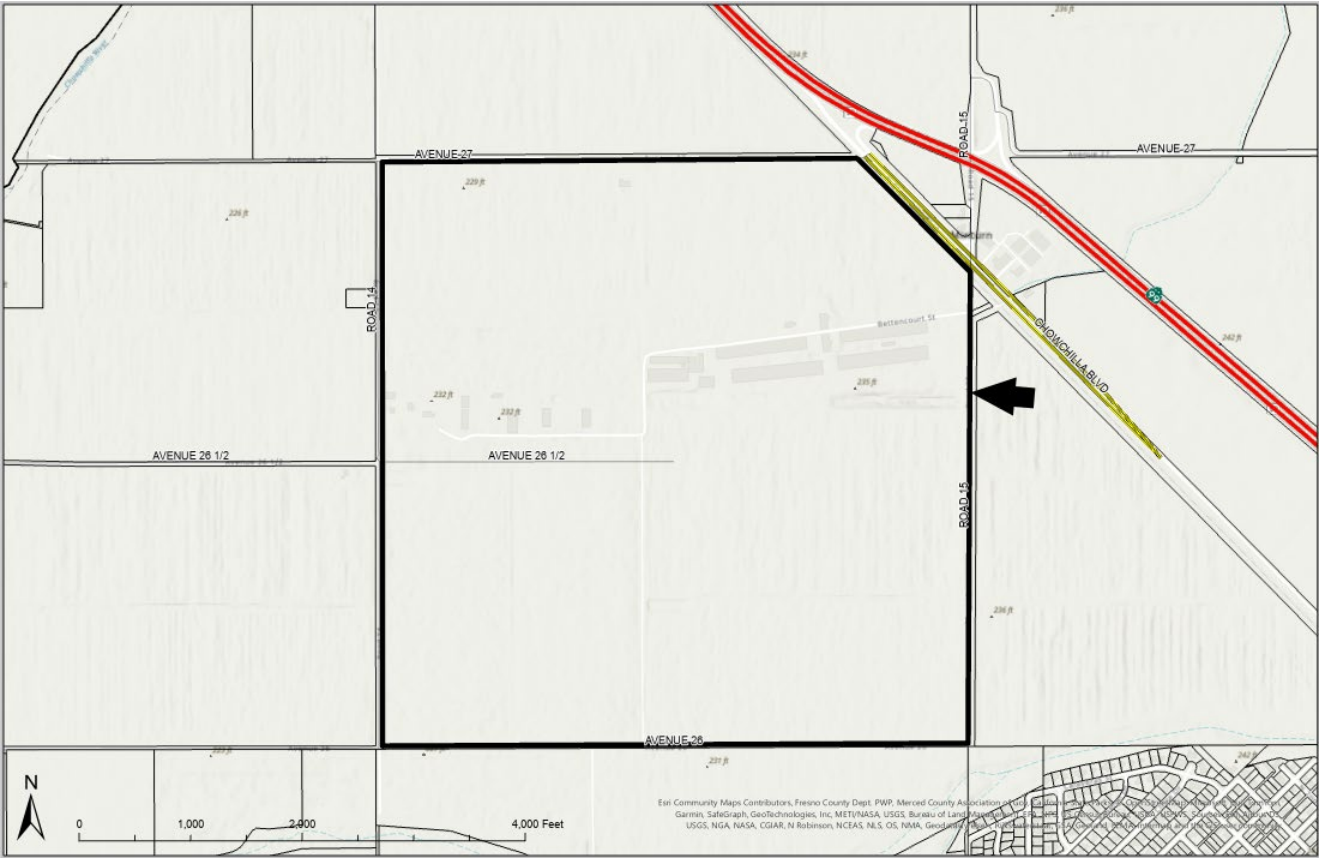
Project Description: The project is Request for a Conditional Use Permit #2024-010 to allow the construction of a Digester System to include a covered lagoon digester, manure separator, and biogas equipment pad. The biogas will be collected in the digester and injected into the Merced pipeline to be sent to the Merced Biogas Cleanup Facility. The produced biogas generated from the proposed Digester will be exported via pipeline on site and using county right-of-way easements along Avenue 26, and interconnect with the existing Merced pipeline to be transported to the Merced Biogas Cleanup Facility.

Document Availability: The Initial Study/ND will be available for review at the following location beginning on Friday, December 6th, 2024:

- County of Madera Community & Economic Development Planning Division, 200 W 4th Street, Madera, CA 93637

Public Review Period: The 30-day public review period for the Initial Study/ND is from December 6, 2024, to January 6, 2025.

Comments: Any person who wishes to comment on the County's intent to adopt the ND must submit written comments no later than 5:00 p.m. on Monday January 6, 2025. Written comments may be sent to Jacob Aragon, Planner III, County of Madera Community & Economic Development Planning Division, 200 W 4th Street, Ste. 3100, Madera, CA 93637



Site Map

Esri Community Maps Contributors, Fresno County Dept. PWR, Merced County Association of Water Contractors, Merced County Water Agency, Modoc County Water Agency, Stanislaus County Water Agency, Yuba County Water Agency, Garmin, SafeGraph, GeoTechnologies, Inc, MET/NASA, USGS, Bureau of Land Management, California State Lands Office, California State Lands Office, USGS, NGA, NASA, CGAR, N Robinson, NCEAS, NLS, OLS, NOAA, Geoconcepts