

# **CULTURAL RESOURCES ASSESSMENT**

**CALIBER COLLISION AUTOBODY SHOP PROJECT**

**APN 384-130-028**

**CITY OF MENIFEE**

**RIVERSIDE COUNTY, CALIFORNIA**

**LSA**

September 2022

# CULTURAL RESOURCES ASSESSMENT

## CALIBER COLLISION AUTOBODY SHOP PROJECT

APN 384-130-028

CITY OF MENIFEE

RIVERSIDE COUNTY, CALIFORNIA

Prepared for:

Desiree McGriff  
Associate Planner  
City of Menifee  
29844 Haun Road  
Menifee, California 92586

Prepared by:

Riordan Goodwin, RA  
LSA Associates, Inc.  
1500 Iowa Avenue, Suite 200  
Riverside, California 92507

With Contributions by:

The Soboba Band of Luiseno Indians  
Cultural Resource Department  
P.O. Box 487  
San Jacinto, CA 92581

LSA Project No. CIM2201

### **National Archaeological Database Information:**

*Type of Study:* Reconnaissance Survey

*Sites Recorded:* None

*USGS 7.5' Quadrangle:* Romoland, California

*Acreage:* 2.89

*Keywords:* Negative results, monitoring recommended



September 2022

---

## MANAGEMENT SUMMARY

LSA was retained by the City of Menifee to conduct a cultural resources assessment for the proposed Caliber Collision Autobody Shop Project in the City of Menifee, Riverside County, California. This cultural resources assessment was completed pursuant to the California Environmental Quality Act (CEQA).

A cultural resources records search, additional research, and a field survey were conducted for the project area. No resources were previously recorded within the project area or identified by the survey. Despite the negative records search and survey results along with moderate disturbance, due to the density of prehistoric resources in the vicinity (24), proximity to a water source, and poor ground visibility there is some potential for subsurface resources within the project area. Therefore, archaeological monitoring of all earthmoving activities in undisturbed soil is recommended.

In the event previously undocumented archaeological resources are identified during earthmoving activities, further work in the area should be halted until the nature and significance of the find can be assessed by the consulting tribes and a Registered Professional Archaeologist.

If human remains are encountered, State Health and Safety Code Section 7050.5 states that no further disturbance shall occur until the County Coroner has made a determination of origin and disposition pursuant to State Public Resources Code Section 5097.98. The County Coroner must be notified of the find immediately. If the remains are determined to be Native American, the County Coroner will notify the Native American Heritage Commission (NAHC), which will determine and notify a Most Likely Descendant (MLD). With the permission of the landowner or his/her authorized representative, the MLD may inspect the site of the discovery. The MLD shall complete the inspection and make recommendations or preferences for treatment within 48 hours of being granted access to the site.

## TABLE OF CONTENTS

MANAGEMENT SUMMARY .....	i
TABLE OF CONTENTS .....	ii
<b>INTRODUCTION .....</b>	<b>1</b>
<b>PROJECT LOCATION AND DESCRIPTION .....</b>	<b>1</b>
<b>NATURAL SETTING .....</b>	<b>1</b>
Climate and Watershed .....	1
Biology .....	1
Geology .....	1
<b>CULTURAL SETTING .....</b>	<b>3</b>
Prehistory .....	3
Ethnography .....	3
History .....	4
<b>METHODS .....</b>	<b>5</b>
Records Search .....	5
Additional Research .....	5
Sacred Lands File Search .....	5
Field Survey .....	5
<b>RESULTS .....</b>	<b>5</b>
Records Search .....	5
Sacred Lands File Search .....	6
Additional Research .....	6
Field Survey .....	7
<b>RECOMMENDATIONS .....</b>	<b>7</b>
<b>REFERENCES .....</b>	<b>8</b>
<b>FIGURE</b>	
Figure 1: Project Regional and Project Location .....	2
<b>TABLE</b>	
Table A: Cultural Resources within One Mile of the Project .....	6
<b>APPENDIX</b>	
A: RECORDS SEARCH BIBLIOGRAPHY	

## INTRODUCTION

LSA was retained by the City of Menifee to conduct a cultural resources assessment for the proposed Caliber Collision Autobody shop Project in the City of Menifee, Riverside County, California. This cultural resources assessment was completed pursuant to the California Environmental Quality Act (CEQA), Public Resources Code Chapter 2.6, Section 21083.2, and California Code of Regulations Title 14, Chapter 3, Article 5, Section 15064.5. The research and field surveys were conducted to determine whether the proposed project would adversely affect any resources considered historical resources pursuant to CEQA.

## PROJECT LOCATION AND DESCRIPTION

The project area is west of Interstate 215 near the southwest corner of Scott Road and Zeiders Road bounded by commercial activity to the north and west, a vacant lot to the east (on the other side of Zeiders Road), and a residence to the south. The project is depicted on the United States Geological Survey (USGS) *Romoland, California* topographic quadrangle map in Township 5 South, Range 3 West in Section 32, San Bernardino Baseline and Meridian (USGS 1979). See Figure 1. The project area is located on Assessor's Parcel Number (APN) 384-130-028, totaling 2.89 currently undeveloped acres. The proposed development is an autobody repair shop with associated parking.

## NATURAL SETTING

### Climate and Watershed

The project region is characterized by a temperate climate, with dry, hot summers and moderate winters. Rainfall ranges from 12 to 16 inches annually (Beck and Haase 1974). Precipitation usually occurs in the form of winter rain, with warm monsoonal showers in summer. An ephemeral drainage transects the site and nearest natural reliable source of water is Salt Creek (now channelized), which drains west approximately 500 feet west of the project.

### Biology

At an average elevation of 1,540 feet, the project is within the Lower Sonoran Life Zone of California (Schoenherr 1992), which ranges from below sea level to 3,500 feet. Cheese weed mallow, eucalyptus, mustard, Russian thistle, star thistle, tree tobacco, foxtail brome (among other species), and xeric grasses were noted on the property. Extensive fauna are known locally, including many endemic species of reptiles, birds, and insects. Common animals of this region include rodents, rabbits, coyotes, raptors, and vultures.

### Geology

The project area is located at the northern end of the Peninsular Ranges Geomorphic Province, a 900-mile-long northwest-southeast trending structural block that extends from the Transverse Ranges to the tip of Baja California and includes the Los Angeles Basin (California Geological Survey 2002; Norris and Webb 1976). The province is approximately 225 miles wide, extending from the

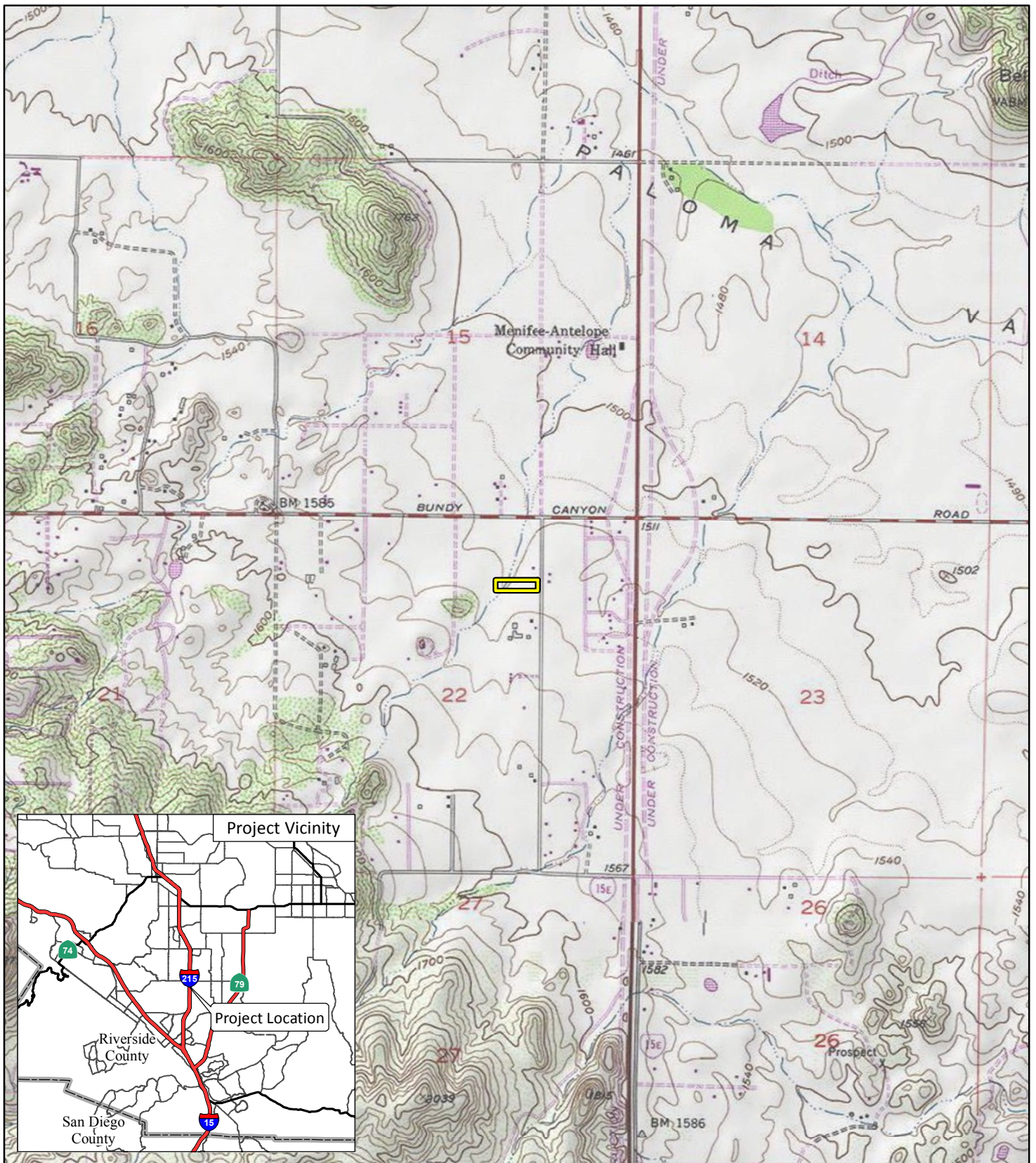
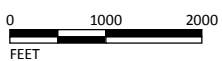


FIGURE 1

LSA

LEGEND

 Project Location



SOURCE: USGS 7.5' Quad - Romoland (1979), Murrieta(1979), CA  
 I:\CIM2201\GIS\MXD\Project\_Location\_USGS.mxd (3/7/2022)

Caliber Collision Autobody Shop  
 Project Location and Vicinity

Colorado Desert in the east, across the continental shelf to the Southern Channel Islands (Santa Barbara, San Nicolas, Santa Catalina, and San Clemente) in the west (Sharp 1976). This region is characterized by a series of mountain ranges separated by northwest-trending valleys subparallel to faults branching from the San Andreas Fault. The geology of this province is similar to that of the Sierra Nevada, with granitic rock intruding into the older metamorphic rocks. It contains extensive pre-Cretaceous (older than 145 million years ago [Ma]) igneous and metamorphic rocks covered by limited exposures of post-Cretaceous (younger than 66 Ma) sedimentary deposits (Norris and Webb 1976). Within this province, the project is located on the Perris Block, a fault-bounded structural block that extends from the southern foot of the San Gabriel and San Bernardino Mountains southeast to the vicinity of Bachelor Mountain and Polly Butte (Morton and Miller 2006; Kenney 1999). It is bounded on the northeast by the San Jacinto Fault and on the southwest by the Elsinore Fault Zone (Morton and Miller 2006).

## CULTURAL SETTING

### Prehistory

Chronologies of prehistoric cultural change in Southern California area have been attempted numerous times, and several are reviewed in Moratto (2004). No single description is universally accepted as the various chronologies are based primarily on material developments identified by researchers familiar with sites in a particular region and variation exists essentially due to the differences in those items found at the sites. Small differences occur over time and space, which combine to form patterns that are variously interpreted.

Currently, two primary regional culture chronology syntheses are commonly referenced in the archaeological literature. The first, Wallace (1955), describes four cultural horizons or time periods: Horizon I – Early Man (9000–6000 BC), Horizon II – Milling Stone Assemblages (6000–3000 BC), Horizon III – Intermediate Cultures (3000 BC–AD 500), and Horizon IV – Late Prehistoric Cultures (AD 500–historic contact). This chronology was refined (Wallace 1978) using absolute chronological dates obtained after 1955.

The second cultural chronology (Warren 1968) is based broadly on Southern California prehistoric cultures and was also revised (Warren 1984; Warren and Crabtree 1986). Warren's (1984) chronology includes five periods in prehistory: Lake Mojave (7000–5000 BC), Pinto (5000–2000 BC), Gypsum (2000 BC–AD 500), Saratoga Springs (AD 500–1200), and Protohistoric (AD 1200–historic contact). Changes in settlement pattern and subsistence focus are viewed as cultural adaptations to a changing environment, which begins with gradual environmental warming in the late Pleistocene, continues with the desiccation of the desert lakes, followed by a brief return to pluvial conditions, and concludes with a general warming and drying trend, with periodic reversals that continue to the present (Warren and Crabtree 1986).

### Ethnography

The project area is situated within the traditional boundaries of the Luiseño (Bean and Shipek 1978). Prior to the Spanish occupation of California, the territory of the Luiseño encompasses approximately 2,000 square miles, including all of Western Riverside County and northwestern San

Diego County. These territorial boundaries were somewhat fluid and changed through time. They encompassed an extremely diverse environment that included coastal beaches, lagoons and marshes, inland river valleys and foothills, and mountain groves of oaks and evergreens (Bean and Shippek 1978). The Luiseño were first encountered by the Spanish missionaries in the late 18th century.

The first written accounts of the Luiseño are attributed to the mission fathers. Later documentation was authored by Sparkman (1908), Kroeber (1976), White (1963), Oxendine (1983), and others. Many of these accounts written by non-native have been challenged by the Luiseño Tribes, as being fictional, romanticized and an inaccurate portrayal of Luiseño Culture. (Soboba Cultural Resource Department 2022)

## History

In California, the historic era is generally divided into three periods: the Spanish Period (1769 to 1821), the Mexican Period (1821 to 1848), and the American Period (1848 to present). Early exploration of the Riverside County area was slow until Lieutenant Pedro Fages, then the military governor of San Diego, crossed through the San Jacinto Valley in 1772.

### *Riverside County*

The Southern Pacific Railroad completed its line from Los Angeles through the San Geronio Pass in 1876. The trains were eventually used to transport settlers into the area, creating a period of agricultural and land development, ultimately resulting in the establishment of Riverside County in 1893. Transportation, agriculture, and the control of water have continued to be central themes in the settlement, development, and growth of Riverside County (Robinson 1979).

### *Meniffee*

The community had its beginnings around 1880 when Luther Meniffee Wilson struck gold, opened a mine, and named it the Meniffee Quartz Lode (Meniffee 2017). In 1885, William Newport came to the Meniffee Valley and established large-scale agriculture on 2,000 acres (Meniffee 2013). A post office was established two years later, approximately a mile northeast of the mine, at the intersection of Newport and Bradley Roads (Meniffee 2017). It would intermittently serve the community until it was closed at the beginning of the 20th century (Salley 1977). The Santa Fe Railroad completed its San Jacinto Branch line from Perris to Hemet in 1888 and, although it passed some four miles to the north of the post office, a local siding was built by the late 1890s to serve the community, fostering the development of Meniffee's agriculture (USGS 1901; Meniffee 2017). By 1890, a blacksmith shop and a new school had been constructed near the post office.

After the establishment of two more local gold mines during the first half of the 1890s (the Lucky Boy and Mammoth Mines), the southwest portion of what is now the City of Meniffee became a small gold mining district named after Wilson's earliest mine (the Meniffee District) (Kupferman 1961; Gudde 1975). Despite the gradual decline of the mining district in the early decades of the 20th century, the local agricultural economy continued to grow and, by mid-1910s, there were approximately 20,000 acres of grain under cultivation (McGroarty 1914). All of the district's mines had closed for good by the mid-1930s, but the community endured and prospered in the ensuing



decades (Gudde 1975). Modern development of Menifee began in the early 1960s with the planned community of Sun City, which is centrally located in the City (Menifee 2013). The town continued to grow in the late 1980s with the addition of a master-planned community. Menifee was incorporated in 2008 (Menifee 2017).

## METHODS

### Records Search

On April 1, 2022, a cultural resources records search was conducted for the current project area at the Eastern Information Center (EIC) at the University of California, Riverside. The EIC houses the pertinent archaeological site and survey information necessary to determine whether cultural resources are recorded within the study area boundaries and which specific areas have been previously surveyed. The research included a review of all recorded historic and prehistoric archaeological sites within one mile of the project, as well as a review of known cultural resource survey and excavation reports. In addition, LSA examined the California State Historic Property Data File (HPD), which includes the National Register of Historic Places (National Register), California Historical Landmarks (CHL), and California Points of Historical Interest (CPHI), various local historic registers, and historic maps. See Appendix A.

### Additional Research

In March 2022, LSA Archaeologist Riordan Goodwin reviewed online historic period maps and aerial photographs and the Built Environment Resources Directory (BERD).

### Sacred Lands File Search

At the direction of the City, LSA requested a Sacred Lands File (SLF) search from the Native American Heritage Commission (NAHC) on March 7, 2022.

### Field Survey

On March 11, 2022, the project area was surveyed by Mr. Goodwin, who walked transects spaced by 10 meters, with particular attention given to surfaces and areas with exposed soil.

## RESULTS

### Records Search

Data from the EIC indicate there have been 56 cultural resource studies previously conducted within one-half mile of the proposed project, none of which included any portion of the project area. Although no resources were previously documented within the project area, 34 have been recorded within one-half mile, including prehistoric and historic period sites and isolates (Table A). The nearest prehistoric resource (33-028615) is approximately 870 meters north of the project area.

**Table A: Cultural Resources within One Mile of the Project**

Primary #	Trinomial	Site Description	Status Code
33-000635	CA-RIV-000635	Bedrock milling feature	—
33-000645	CA-RIV-000645	Prehistoric habitation site	—
33-001072	CA-RIV-001072	Bedrock milling with rock art	—
33-001309	CA-RIV-001309	Bedrock milling with artifact scatter	—
33-002151	CA-RIV-002151	Bedrock milling feature	—
33-002152	CA-RIV-002152	Bedrock milling feature	—
33-002153	CA-RIV-002153	Prehistoric artifact scatter	—
33-002154	CA-RIV-002154	Bedrock milling feature	—
33-003335	CA-RIV-003335	Prehistoric artifact scatter	—
33-003336	CA-RIV-003336	Bedrock milling, artifact scatter	—
33-003339	CA-RIV-003339	Prehistoric artifact scatter	—
33-007714	—	27115 Scott Road; TK Ranch - historic period building complex c. 1920	—
33-007716	—	33281 Zeiders Road; historic period building complex c. 1927	—
33-007717	—	33300 Antelope Road (formerly old Highway 395); historic period building complex c. 1890s–1930s	—
33-011242	—	Historic period foundations, refuse	—
33-011245	—	Bedrock milling feature	—
33-011246	—	Bedrock milling feature	—
33-011253	—	Isolated prehistoric artifacts	—
33-014990	CA-RIV-007964	Bedrock milling features	—
33-014991	CA-RIV-007965	Bedrock milling features	—
33-015462	CA-RIV-8150	Bedrock milling feature	—
33-015463	—	Isolated prehistoric artifact	—
33-015668	—	Water conveyance feature	—
33-015987	CA-RIV-8290	Bedrock milling feature	—
33-016712	—	27984 Scott Road, Charlie Baily Farmstead; historic period building complex c. 1905	—
33-017108	—	32930 Cox Road, Shook House; historic period building complex c. 1950	—
33-017109	—	26993 Bradley Road/26993 Wickerd Road	—
33-017182	—	26753 Scott Road; historic period building c. 1946	—
33-017575	CA-RIV-9111	Bedrock milling feature	—
33-027009	—	Power transmission line - SCE Menifee 12kV #1	—
33-024602	—	Isolated prehistoric artifact	—
33-024731	CA-RIV-012243	Bedrock milling, artifact scatter	—
33-024732	CA-RIV-012244	Prehistoric artifact scatter	—
33-028615	—	Bedrock milling features	—

Source: Compiled by LSA (2022).

### Sacred Lands File Search

The NAHC responded on April 19, 2022 with positive results for the SLF search which were forwarded to the City the same day.

### Additional Research

Review of online historic period maps and aerial photographs indicated no buildings or structures were on the project parcel during the historic period (USGS various; HistoricAerials.com 2022). None of the built environment resources are listed in the BERD.

## Field Survey

The field survey revealed that the project area is on the eastern edge of an ephemeral drainage and has been moderately disturbed by earthmoving and vegetation-abatement disking. Wood/metal debris and landscape dumping obscure the northwest portion of the site, and surface visibility was poor overall (approximately 20 percent) with pervasive obstruction by xeric vegetation. Modern refuse was noted throughout the project area. Soils are coarse decomposed granite-rich loam with some alluvial silt. No cultural resources were identified within the project area.

## RECOMMENDATIONS

A cultural resources records search, additional research, and a field survey were conducted for the project area. No resources were previously recorded within the project area or identified by the survey. Despite the negative records search and survey results along with moderate disturbance, due to the density of prehistoric resources in the vicinity (24), proximity to a water source, and poor ground visibility there is some potential for subsurface resources within the project area. Therefore, archaeological monitoring of all earthmoving activities in undisturbed soil is recommended.

In the event previously undocumented archaeological resources are identified during earthmoving activities, further work in the area should be halted until the nature and significance of the find can be assessed by the consulting tribes and a Registered Professional Archaeologist.

If human remains are encountered, State Health and Safety Code Section 7050.5 states that no further disturbance shall occur until the County Coroner has made a determination of origin and disposition pursuant to State Public Resources Code Section 5097.98. The County Coroner must be notified of the find immediately. If the remains are determined to be Native American, the County Coroner will notify the NAHC, which will determine and notify an MLD. With the permission of the landowner or his/her authorized representative, the MLD may inspect the site of the discovery. The MLD shall complete the inspection and make recommendations or preferences for treatment within 48 hours of being granted access to the site.

---

## REFERENCES

Bean, Lowell John, and Florence C. Shippek

- 1978 Luiseño. In California, edited by R.F. Heizer, pp. 550–563. *Handbook of North American Indians*, vol. 8, W.C. Sturtevant, general editor, Smithsonian Institution, Washington, D.C.

Beck, Warren A., and Ynez D. Haase

- 1974 *Historical Atlas of California*. Oklahoma City: University of Oklahoma Press.

California Geological Survey

- 2002 *California Geomorphic Provinces*. California Geologic Survey Note 36. California Department of Conservation.

Gudde, Erwin G.

- 1975 *California Gold Camps*. Edited by Elisabeth K. Gudde. Berkeley and Los Angeles: University of California Press.

HistoricAerials.com

- 2022 Various aerial photographs of project area.

Kenney, Miles D.

- 1999 *Emplacement, Offset History, and Recent Uplift of Basement within the San Andreas Fault System, Northeastern San Gabriel Mountains*. Unpublished Ph.D. Dissertation, University of Oregon. 279 pp.

Kroeber, A.L.

- 1976 *Handbook of the Indians of California*. Dover Publications, New York. Originally published 1925, Bulletin No. 78, Bureau of American Ethnology, Smithsonian Institution, Washington, D.C.

Kupferman, Steven A.

- 1961 *Riverside County Mineral Resources*. Unpublished Manuscript # 6294 of the American Institute of Professional Geologists.

McGroarty, John S.

- 1914 *Southern California. Comprising the Counties of Imperial, Los Angeles, Orange, Riverside, San Bernardino, San Diego, Ventura*. Southern California Panama Expositions Commission. Introduction by John S McGroarty.

Menifee, City of

- 2013 *General Plan Draft Environmental Impact Report*. <http://www.cityofmenifee.us/DocumentCenter/View/1105> (accessed June 2017).
- 2017 History. <https://www.cityofmenifee.us/85/History> (accessed June 2017).

Moratto, Michael J.

- 2004 *California Archaeology*. Orlando, Florida: Academic Press. Originally published 1984.

Morton, Douglas M., and Fred K. Miller

- 2006 *Geologic Map of the San Bernardino and Santa Ana 30-minute by 60-minute Quadrangles, California*. Digital preparation by Pamela M. Cosette and Kelly R. Bovard. Prepared by the United States Geological Survey (USGS) in cooperation with the California Geological Survey. USGS Open File Report 2007-1217. Map Scale 1:100,000.

Norris, R.M., and R.W. Webb

- 1976 *Geology of California*, John Wiley and Sons, Inc., Santa Barbara.

Oxendine, Joan

- 1983 *The Luiseño Village During the Late Prehistoric Era*. Unpublished Ph.D. dissertation, Department of Anthropology, University of California, Riverside.

Robinson, W.W.

- 1979 *Land in California*. University of California Press, Berkeley and Los Angeles.

Salley, H.E.

- 1977 *History of California Post Offices 1849–1976*.

Schoenherr, Allan A.

- 1992 *A Natural History of California*. University of California Press, Berkeley and Los Angeles.

Sharp, R.P.

- 1976 *Geology: Field Guide to Southern California*. Kendall/Hunt Publishing Company, Second Edition: 181.

Soboba Band of Luiseno Indians Cultural Resources Department

- 2022 Comments on this report.

Sparkman, Philip S.

- 1908 *The Culture of the Luiseño Indians*. University of California Publications in American Archaeology and Ethnology 8(4). Berkeley.

United States Geological Survey

- 1901 *Romoland, California* 15-minute topographic quadrangle map.  
1954 *Romoland, California* 7.5-minute topographic quadrangle map.  
1962 *Romoland, California* 7.5-minute topographic quadrangle map.  
1968 *Romoland, California* 7.5-minute topographic quadrangle map.  
1979 *Romoland, California* 7.5-minute topographic quadrangle map.

Wallace, William J.

- 1955 *A Suggested Chronology for Southern California Coastal Archaeology*. *Southwestern Journal of Anthropology* 11(3):214–230.

- 1978 *Post-Pleistocene Archaeology*. In *California*, edited by R. Heizer, pp. 550–563. *Handbook of North American Indians*, Vol. 8. W.C. Sturtevant, general editor. Smithsonian Institution, Washington, D.C.

Warren, Claude N.

- 1968 *Cultural Tradition and Ecological Adaptation on the Southern California Coast*. *Eastern New Mexico University Contributions in Anthropology* 1(3). Portales.
- 1984 *The Desert Region*. In *California Archaeology*, by M. Moratto with contributions by D.A. Fredrickson, C. Raven, and C.N. Warren, pp. 339–430. Academic Press, Orlando, Florida.

Warren, Claude N., and Robert H. Crabtree

- 1986 *Prehistory of the Southwestern Area*. In W.L. D’Azevedo, ed., *Handbook of the North American Indians*, Vol. 11, Great Basin, pp. 183–193. Washington, D.C.: Smithsonian Institution.

White, Raymond C.

- 1963 *Luiseño Social Organization*. University of California. *Publications in American Archaeology and Ethnology*. 48 (2):91–194.

---

## APPENDIX A

# RECORDS SEARCH BIBLIOGRAPHY

## Report List

Report No.	Other IDs	Year	Author(s)	Title	Affiliation	Resources
RI-00229	NADB-R - 1080286; Submitter - 265; Voided - MF-0216	1977	Ken Daly	Archaeological Assessment of a Portion of the SE 1/4 of Section 15, T6S, R3W, Romoland Quadrangle, Riverside County, California	Archaeological Research Unit, U.C. Riverside	
RI-00296	NADB-R - 1080351; Other - UCRARU #334; Voided - MF-0268	1978	James Baldwin	Environmental Impact Evaluation: Archaeological Assessment of Tentative Parcel Map 11966, Near Rancho California, Riverside County, California	Archaeological Research Unit, U.C. Riverside	
RI-00306	NADB-R - 1080361; Submitter - 327; Voided - MF-0278	1978	Donna Belligio	Environmental Impact Evaluation: An Archaeological Assessment of Tentative Parcel Map 11995, South of Scott Road, Menifee Area of Riverside County, California	Archaeological Research Unit, U.C. Riverside	
RI-00307	NADB-R - 1080362; Submitter - 327; Voided - MF-0279	1978	Donna Belligio	Environmental Impact Evaluation: An Archaeological Assessment of Tentative Parcel Map 11994, South of Scott Road, Menifee Area of Riverside County, California	Archaeological Research Unit, U.C. Riverside	
RI-00308	NADB-R - 1080363; Submitter - 331; Voided - MF-0280	1978	Donna Belligio	Environmental Impact Evaluation: An Archaeological Assessment of Tentative Parcel Map 12179, South of South Road, Menifee Area of Riverside County, California	Archaeological Research Unit, U.C. Riverside	
RI-00393	NADB-R - 1080440; Submitter - 343; Voided - MF-0343	1978	Thomas Holcomb	Environmental Impact Evaluation: Archaeological Assessment of a Portion of Land Near Temecula, Riverside County, California (Tentative Parcel Map 11660)	Archaeological Research Unit, U.C. Riverside	33-001309
RI-00394	NADB-R - 1080441; Submitter - 343; Voided - MF-0343	1978	Rene Giansanti	Results of Test Excavations and Surface Collection of Archaeological Materials at CA-Riv-1309, Near Temecula, Riverside County, California (TPM 11660)	Archaeological Research Unit, U.C. Riverside	33-001309
RI-00477	NADB-R - 1080519; Submitter - 327; Voided - MF-0414	1978	Donna Belligio	Environmental Impact Evaluation: An Archaeological Assessment of Tentative Parcel Map 12076, South of Scott Road, Menifee Area of Riverside County, California	Archaeological Research Unit, U.C. Riverside	
RI-00512	NADB-R - 1080551; Submitter - 354; Voided - MF-0444	1978	Stan Wilmoth	Environmental Impact Evaluation: Archaeological Assessment of Tentative Parcel Map 11380, Temecula Area of Riverside County, California	Archaeological Research Unit, U.C. Riverside	
RI-00554	NADB-R - 1080592; Voided - MF-0482	1979	Larry L. Bowles and Jean A. Salpas	An Archaeological Assessment of Parcel 13,240	Archaeological Consultant	33-001702



## Report List

Report No.	Other IDs	Year	Author(s)	Title	Affiliation	Resources
RI-00627	NADB-R - 1080678; Submitter - 485; Voided - MF-0556	1979	Renee Giansanti	Environmental Impact Evaluation: An Archaeological Assessment of Tentative Parcels 15142, 15203, 15096, and Tentative Tract 14851, Paloma Valley Area of Riverside County, California	Archaeological Research Unit, U.C. Riverside	
RI-00867	NADB-R - 1080922; Submitter - 508; Voided - MF-0785	1980	Renee Giansanti	Environmental Impact Evaluation: An Archaeological Assessment of Tentative Parcel 14979, Paloma Valley Area of Riverside County, California	Archaeological Research Unit, U.C. Riverside	
RI-01213	NADB-R - 1081370; Submitter - 622; Voided - MF-1202	1981	Richard C. Jenkins	Environmental Impact Evaluation: An Archaeological Assessment of Tentative Tract 13057, Paloma Valley, Riverside County, California	Archaeological Research Unit, U.C. Riverside	33-002152, 33-002153, 33-002154, 33-002155, 33-002156
RI-01328	NADB-R - 1081501; Submitter - 655; Voided - MF-1328	1981	Ken Kroesen	An Archaeological Assessment of Parcels 1 and 2 of Parcel Map 13522, South of Sun City in Riverside County, California	Archaeological Research Unit, U.C. Riverside	33-000636
RI-01400	NADB-R - 1081642; Voided - MF-1464	1982	SALPAS, JEAN A.	AN ARCHAEOLOGICAL ASSESSMENT OF 23.34 ACRES OF LAND NEAR SUN CITY	AUTHOR(S)	
RI-01503	NADB-R - 1081767; Voided - MF-1578	1982	DEL CHARIO, KATHLEEN and MARIE COTTRELL	ARCHAEOLOGICAL ASSESSMENT OF TENTATIVE PARCEL 17674, NEAR SUN CITY, RIVERSIDE COUNTY, CALIFORNIA	ARCHAEOLOGICAL RESOURCE MANAGEMENT CORPORATION	
RI-01844	NADB-R - 1082224; Voided - MF-2011	1987	FREEMAN, TREVOR A. and DAVID VAN HORN	Archaeological Survey Report: The Rose Hills Property, Paloma Valley, Riverside County, California	ARCHAEOLOGICAL ASSOCIATES, LTD.	33-000645, 33-003335, 33-003336, 33-003339
RI-02525	NADB-R - 1083012; Voided - MF-2749	1989	KELLER, JEAN S.	AN ARCHAEOLOGICAL ASSESSMENT OF TENTATIVE PARCEL MAP NO. 24538, RIVERSIDE COUNTY, CALIFORNIA.	AUTHOR(S)	
RI-03189	NADB-R - 1083751; Other - 89-90; Voided - MF-3408	1990	PEAK AND ASSOCIATES and Brian F. Mooney Associates	CULTURAL RESOURCES ASSESSMENT OF AT&T'S PROPOSED SAN BERNARDINO TO SAN DIEGO FIBER OPTIC CABLE, SAN BERNARDINO, RIVERSIDE AND SAN DIEGO COUNTIES, CALIFORNIA	PEAK AND ASSOCIATES & BRIAN F. MOONEY ASSOCIATES	
RI-03365	NADB-R - 1083998; Voided - MF-3604	1991	DROVER, CHRISTOPHER E.	ENVIRONMENTAL IMPACT EVALUATION: A CULTURAL RESOURCES ASSESSMENT OF THE 385 ACRE MURRIETA HIGHLANDS -- KELLER CORRIDOR PROJECT	AUTHOR	33-001558, 33-001559

## Report List

Report No.	Other IDs	Year	Author(s)	Title	Affiliation	Resources
RI-04126	NADB-R - 1085315; Voided - MF-4602	1998	MASON, ROGER, PHILIPPE LAPIN, and WAYNE H. BONNER	CULTURAL RESOURCES RECORDS SEARCH AND SURVEY REPORT FOR A PACIFIC BELL MOBILE SERVICES TELECOMMUNICATIONS FACILITY: CM 123-03 NEAR SUN CITY, RIVERSIDE COUNTY, CALIFORNIA	CHAMBERS GROUP, INC.	
RI-04404	NADB-R - 1085736; Voided - MF-4913	2000	JONES AND STOKES ASSOCIATES, INC.	FINAL CULTURAL RESOURCES INVENTORY REPORT FOR THE WILLIAMS COMMUNICATIONS, INC., FIBER OPTIC CABLE SYSTEM INSTALLATION PROJECT, RIVERSIDE TO SAN DIEGO, CALIFORNIA VOL I-IV.	JONES AND STOKES ASSOCIATES, INC.	33-000816, 33-000817, 33-000862, 33-001845, 33-002970, 33-003081, 33-003839, 33-004202, 33-004624, 33-004744, 33-004768, 33-007587, 33-007601, 33-008105, 33-008172, 33-009772, 33-009773, 33-009774, 33-009775, 33-009776
RI-04808	NADB-R - 1086170; Submitter - Technical Report 02-35	2003	LERCH, MICHAEL K.	NEGATIVE HISTORIC PROPERTY SURVEY REPORT FOR THE SCOTT ROAD WIDENING PROJECT, RIVERSIDE COUNTY, CALIFORNIA	STATISTICAL RESEARCH, INC., Redlands, CA	33-012297
RI-04905	NADB-R - 1086267; Submitter - WHC-03- R197	2003	IRISH, LESLIE NAY, KRISTIE R. BLEVINS, ANNA M. HOOVER, and HUGH M. WAGNER	A PHASE I ARCHAEOLOGICAL AND PALEONTOLOGICAL SURVEY REPORT FOR MENIFEE ASSEMBLAGES, TT#31194, APNS 360-300-002 TO -006, -009, AND 360- 350-001, MENIFEE, COUNTY OF RIVERSIDE, CALIFORNIA	L&L ENVIRONMENTAL, INC.	
RI-04906	NADB-R - 1086268; Submitter - WHC-03- 197	2003	IRISH, LESLIE NAY	LETTER REPORT: A HISTORICAL ASSESSMENT AMENDMENT TO AN ARCHAEOLOGICAL AND PALEONTOLOGICAL ASSESSMENT REPORT ENTITLED "PHASE I ARCHAEOLOGICAL AND PALEONTOLOGICAL SURVEY REPORT FOR MENIFEE ASSEMBLAGES, TR31194, APNS 360-300-002 TO -006, ETC	L&L ENVIRONMENTAL, INC.	
RI-05059	NADB-R - 1086421; Submitter - 02.597	2001	MCKENNA ET AL.	RESULTS OF A PALEONTOLOGICAL MONITORING PROGRAM AT THE MURRIETA HIGHLANDS PROJECT AREA IN THE PALOMA VALLEY OF RIVERSIDE COUNTY, CALIFORNIA	MCKENNA ET AL.	
RI-05133	NADB-R - 1086496	2003	SRIRO, ADAM	CULTURAL RESOURCE SURVEY OF 14 WORK STATIONS FOR THE SOUTHERN CALIFORNIA EDISON DETERIORATED POLE REPLACEMENT PROGRAM (2003), RIVERSIDE COUNTY, CALIFORNIA	MOONEY/ HAYES ASSOCIATES	

## Report List

Report No.	Other IDs	Year	Author(s)	Title	Affiliation	Resources
RI-05271	NADB-R - 1086634; Submitter - 03-4	2003	ROBINSON, MARK	CULTURAL RESROUCES SURVEY AND ASSESSMENT OF APPROXIMATELY 2.0 ACRES: ZEIDERS ROAD PROJECT (APN 359-100-001) NEAR MURRIETA, RIVERSIDE COUNTY, CA	GREAT LAKES RESEARCH	
RI-05626	NADB-R - 1086989	2003	WHITE, ROBERT S. and LAURA S. WHITE	A CULTURAL RESOURCES ASSESSMENT OF A 5.34 ACRE PARCEL LOCATED AT 33381 HIGHWAY 215, MENIFEE, RIVERSIDE COUNTY, CA	ARCHAEOLOGICAL ASSOCIATES	
RI-05630	NADB-R - 1086993	2004	WHITE, ROBERT S. and LAURA S. WHITE	A CULTURAL RESOURCES ASSESSMENT OF A 7.93-ACRE PARCEL AS SHOWN ON TPM 3200 LOCATED AT 26560 MEADOW ROAD, MENIFEE, RIVERSIDE COUNTY	ARCHAEOLOGICAL ASSOCIATES	
RI-06561	NADB-R - 1087928; Submitter - CONTRACT #1733	2005	TANG, BAI, MICHAEL HOGAN, and JOSH SMALLWOOD	HISTORICAL/ARCHAEOLOGICAL RESOURCES SURVEY REPORT, SIGNAL LIGHT AND ROAD IMPROVEMENTS AT THE INTERSECTION OF SCOTT AND ANTELOPE ROADS, CITY OF MURRIETA, RIVERSIDE COUTNTY, CA	CRM TECH	
RI-06642	NADB-R - 1088009; Submitter - JOB #CA-8596D	2006	Carla Allred	Letter Report: Proposed Cellular Tower Project(s) in Riverside County, California, Site Number(s)/Name(s): CA-8596D/ Lynx, TCNS#12278	EarthTouch, Inc.	
RI-07286		2007	Bai Tom Tang and Michael Hogan	Historical/Archaeological Resources Survey Report Assessor's Parcel No. 360-640-004	CRM TECH	33-015987
RI-07510	Submitter - Job No. 05-07-06-1288	2007	McKenna, Jeanette A.	A Phase I Cultural Resources Investigation of the Proposed Wal-Mart Site in the Community of Menifee, Riverside County, California	McKenna et. al.	33-000635
RI-07512		2007	Keller, Jean A.	A Phase I Cultural Resources Assessment of Plot Plan 22279 +_ 50.95 Acres of Land Near Menifee, Riverside County, California, USGS Romoland, California Quadrangle, 7.5' Series	Cultural Resources Consultant, Encinitas, CA	
RI-07626		2008	Clowery-Moreno, Sara and Brian F. Smith	A Phase I Archaeological Assessment for the Shops at Scott Project, Riverside County, California, APNs 384-180-001, 384-180-006, and 384-180-010	Brian F. Smith and Associates	
RI-07631		2004	Meier, K. Harley and Brian F. Smith	A Cultural Resources Survey of the Heritage Marketplace Project	Brian F. Smith and Associates	

## Report List

Report No.	Other IDs	Year	Author(s)	Title	Affiliation	Resources
RI-07820	Other - 33-16712	2007	Keller, Jean A.	A Phase II Historical Resources Investigation of Site 33-16712 Located Within the Boundaries of the Junction at Menifee Valley, Plot Plan 22279, Menifee Valley, Riverside County, California	N/A	33-016712
RI-07852		2007	Smith Francesca G. and Caprice D. (Kip) Harper	Built-Environment Historic Resources Technical Memorandum for Bundy Canyon-Scott Road Improvement Project	PARSONS	33-007706, 33-016712, 33-017106, 33-017107, 33-017108, 33-017109, 33-017182
RI-07907	Other - 25300002	2004	Dice, Michael and Marnie Vianna	An Archaeological and Paleontological Resource Evaluation of The Menifee Town Center Project near Scott and Haleblan Roads, County of Riverside, California	Michael Brandman Associates	33-012888, 33-012889
RI-07926	Submitter - CRM TECH Contract No. 2272	2008	Bodmer, Clarence, Daniel Ballester, and Laura H. Shaker	Phase I Archaeological Assessment: Assessor's Parcel No. 384-180-027, Plot Plan No. 23363, near the City of Murrieta, Riverside County, California	CRM TECH	
RI-08195		2009	Jean A. Keller	Phase I Cultural Resources Assessment of Tentative Parcel Map 34901. 5.04 Acres in the City of Menifee, Riverside County, California	Cultural Resouces Consultant, Encinitas, CA	33-017575
RI-08364		2010	Michelle Campbell, Rebecca McCorkle Apple, Christopher L. Shaver, and Cheryl Bowden-Renna	Archaeological Survey Report for the Interstate 215/Scott Road Interchange Improvement Project near Murrieta, Riverside County, California.	Dokken Engineering and EDAW, Inc.	33-007717
RI-08509	Other - IO# 313107, SAP# TD458829; Other - SCE Purchase Order Number: 4500179336	2010	Linda Honey	Archaeological Survey Report for Southern California Edison's Pole Replacement Project: Menifee, Riverside County, California	Chambers Group, Inc.	
RI-08785		2012	James J. Schmidt	Letter Report: 77-TD569291; WO 6088-4800, 0-4826, 0-4804, and E-4830: Equinox 12 kV, Roadrunner 12 kV, Menifee 12 kV and Flats 12 kV Deteriorate Pole Replacement Projects	Compass Rose Archaeological, Inc.	33-000392, 33-001070, 33-002075, 33-002076, 33-008876, 33-008877, 33-008878, 33-013245, 33-013246, 33-013247, 33-013248, 33-013871, 33-014370, 33-014990, 33-014991, 33-015442, 33-015444, 33-015449, 33-015662, 33-021009
RI-09132		2013	Leslie Irish and Barbara Loren-Webb	Phase 1 Cultural Resources Assessment Update: Golden Meadows, City of Menifee, CA and Phase II Testing	L&L Environmental	33-023814

## Report List

Report No.	Other IDs	Year	Author(s)	Title	Affiliation	Resources
RI-09211		2013	Heather R. Puckett	Cultural Resources Summary for the Proposed Verizon Wireless, Inc., Property at the Bellany Site, 33177 Bailey Park Boulevasrd, Menifee, Riverside County	Tetra Tech	
RI-09353		2003	Leslie Nay Irish, Kristie R. Blevins, Anna M. Hoover, and Hugh M. Wagner	A Phase I Archaeological and Paleontological Survey Report for Menifee Assemblages, TT#31194, APNS 360-300-002 to -006, -009, and 360-350-001 Menifee County of Riverside, California. Final WHC-03-R197	L & L Environmental	
RI-09447		2015	Kassie Sugimoto and Andrew Garrison	Phase 1 Cultural Resources/Archaeological Study All Star Super Storage City of Menifee Project 2015-156 Assessor Parcel Number: 360-350-029	Scientific Resource Surveys, Inc.	
RI-09468		2016	Bai "Tom" Tang, Ben Kerridge, and Nina Gallardo	Historical/Archaeological Resources Survey Report: Rancho Bonito Project, City of Menifee, Riverside County, California	CRM TECH	
RI-09814		2015	Brian F. Smith	Results of Archaeological Monitoring at the Commerce Pointe Project (Project No. GP12-004), City of Menifee, California (Negative Archaeological Monitoring Report)	Brian F. Smith & Associates	
RI-09872	CRM TECH Contract No. 3028A	2016	Bai "Tom" Tang, Michael Hogan, Ben Kerridge, Nina Gallardo, and Salvadore Boites	Historical/ Archaeological Resources Survey Report Millcreek Promenade Project City of Menifee Riverside County, California	CRM TECH	
RI-10158		2017	Atkins	Murrieta Hills Specific Plan Amendment Phase II Test and Evaluation	ATKINS	33-000645, 33-003335, 33-003336, 33-003339, 33-011236, 33-024644, 33-024650, 33-024730, 33-024731, 33-024732, 33-024733, 33-024865
RI-10377	Other - Project No. GP16-026P	2018	Brian F. Smith	Results of Archaeological Monitoring at the Commerce Pointe II Project (Project No. GP16-026P), City of Menifee, California (Negative Archaeological Monitoring Report)	Brian F. Smith and Associates, Inc.	
RI-10600		2006	Sean M. Thal	Historic Consultation for Nextel of California (Nextel) Wireless Telecommunications Service (WTS) Facility Project Lynx / CA-8596D, 33300 Antelope Road, Murrieta, Riverside County, California	Earth Touch, Inc	
RI-10757		2019	Kholood Abdo Hintzman	Cultural Resource Constraints Analysis for Assessor's Parcel Number 388-010-040, City of Murrieta. Riverside County, California	Applied EarthWorks	33-007717