

**Eastern Municipal Water District**

2270 Trumble Road  
P.O. Box 8300  
Perris, CA 92572-8300



**Notice of Exemption**

To: Riverside County Clerk  
2724 Gateway Drive  
Riverside, CA 92507

**Project Title:** Perris Water Filtration Plant Membrane Replacement Project  
**Project Location:** 19750 Old Evans Rd  
**City:** Perris, CA 92571  
**County:** Riverside

**Description of Nature, Purpose, and Beneficiaries of Project:**

Eastern Municipal Water District proposes to replace-in-kind ultrafiltration membranes at the Perris Water Filtration Plant (PWFP) located in Perris, CA. PWFP uses ultrafiltration technology to treat source water from the Colorado River and State Water Project, with a rated capacity of 24 MGD. The production capacity of the plant has decreased since the membrane’s installation in 2017 due to the increased frequency of downtime for maintenance and repairs of the membranes as they reach their end of useful life. The project will be implemented in two phases. Phase I will consist of the replacement of membranes in one train and filling of spare locations with new and removed functional membranes, which will increase plant capacity by 4.2 MGD. Membranes in the remaining five trains and Reject Recovery facility will be replaced as well as installed in spare locations as part of Phase II, returning the plant to its rated production capacity of 24 MGD. The beneficiaries of the proposed project are District ratepayers.

**Public Agency Approving and Carrying Out Project:** Eastern Municipal Water District

**Exempt Status:**

Categorical Exemption. 15301

**Reasons why project is exempt:**

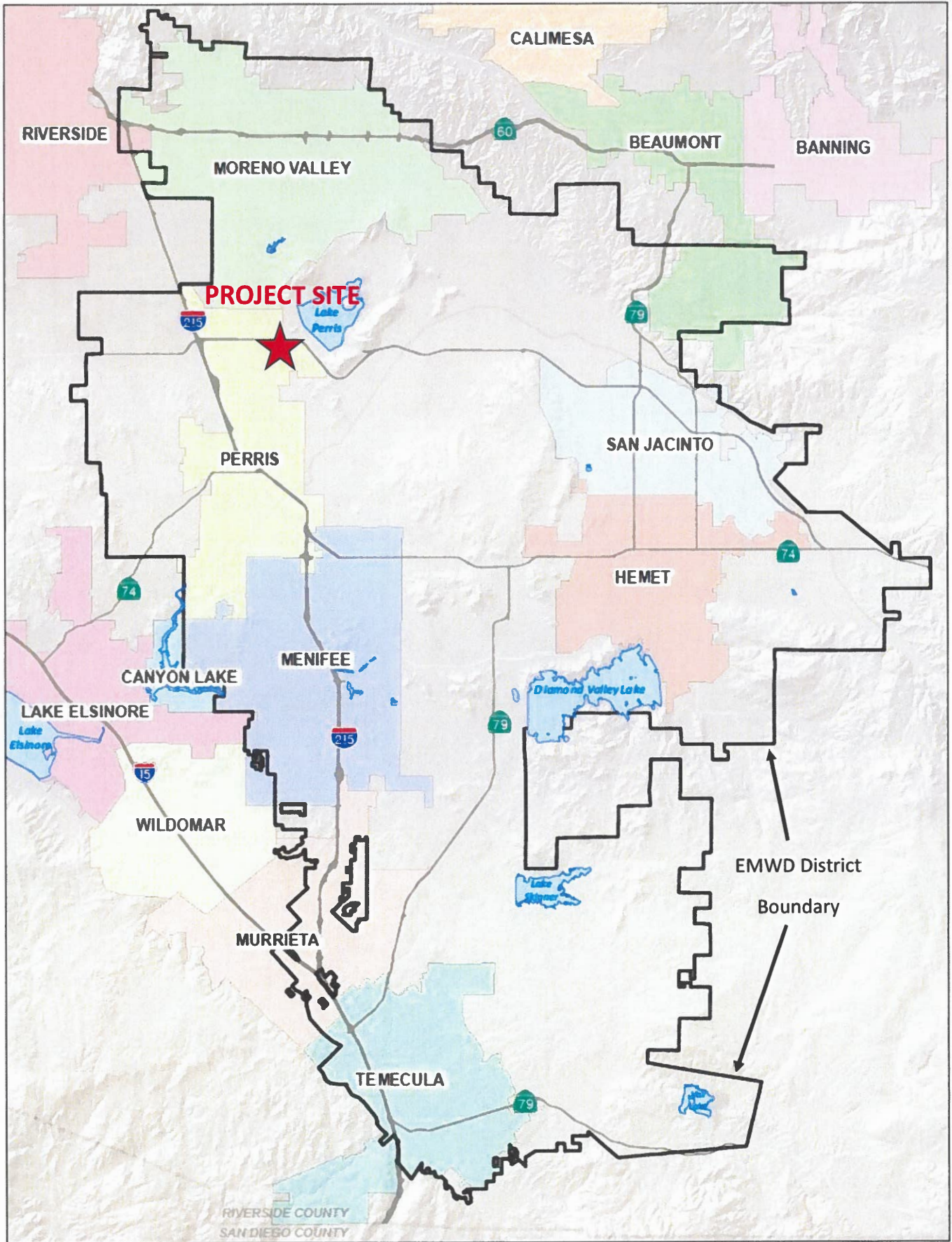
Implementation of the proposed project would result in the repair and maintenance of an existing public structure/facility involving no expansion of plant design capacity. The project will replace-in-kind the worn ultrafiltration membranes and allow the plant to return to the rated production capacity.

**EMWD Contact:** Joe Broadhead **Phone:** (951) 928-3777, ext 4545

Joe Broadhead  
Principal Water Resources Specialist

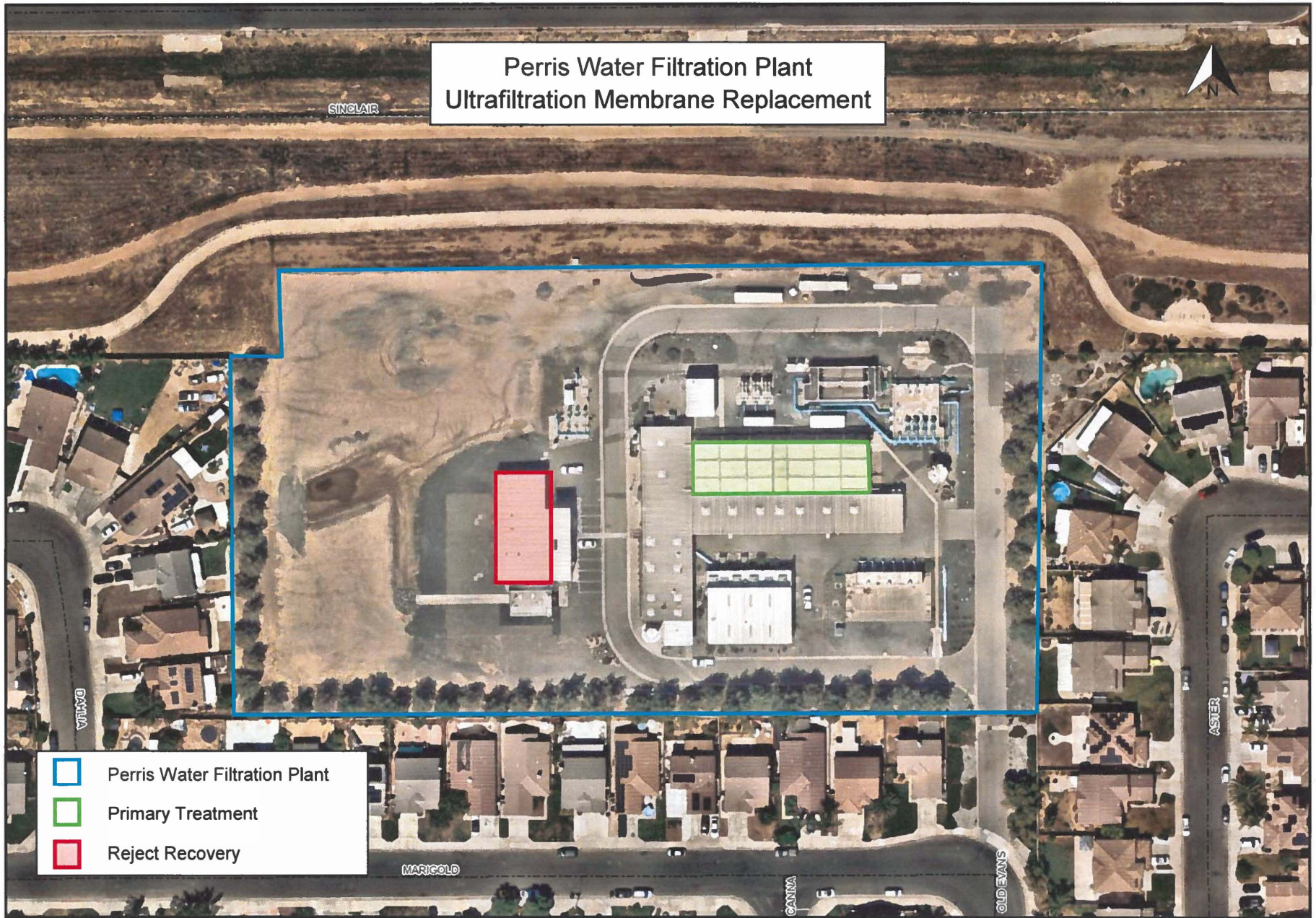
1-30-25

Date



Perris Water Filtration Plant Membrane Replacement Project

EXHIBIT 1: REGIONAL LOCATION MAP



Perris Water Filtration Plant Membrane Replacement Project

EXHIBIT 2: SITE LOCATION MAP