

**Eastern Municipal Water District**

2270 Trumble Road  
P.O. Box 8300  
Perris, CA 92572-8300



**Notice of Exemption**

**To:** Riverside County Clerk  
2724 Gateway Drive  
Riverside, CA 92507

**Project Title:** Temecula Valley Regional Water Reclamation Facility Gravity Filters/Headworks Electrical Rehabilitation  
**Project Location:** 42565 Avenida Alvarado  
**City:** Temecula  
**County:** Riverside

**Description of Nature, Purpose, and Beneficiaries of Project:**

Eastern Municipal Water District (EMWD) proposes to conduct electrical retrofits at the gravity filters and headworks areas at the Temecula Valley Regional Water Reclamation Facility (TVRWRF), which provides services to Temecula, French Valley, and Murrieta areas. The facility’s gravity filters, constructed in 1989, and the motor control center and conduits are nearing capacity and have limited space for upgrades. The headworks, constructed in 2000, provides influent to TVRWRF’s three plants. The plants each have slide gates to adjust and stop the flow; however, the slide gates are manually operated and are not suited to be used in emergency diversions.

The scope of the project includes adding an electrical switch rack and power distribution panel to the gravity filter motor control center area to improve the electrical system configuration and decrease the cables in existing conduits. At the headworks area, a motor operation will be installed at each slide gate to provide operational flexibility and improve response for flow diversions in emergencies. Beneficiaries of the project are EMWD ratepayers.

**Public Agency Approving and Carrying Out Project:** Eastern Municipal Water District

**Exempt Status:**

Categorical Exemption. 15301(a)

**Reasons why the project is exempt:**

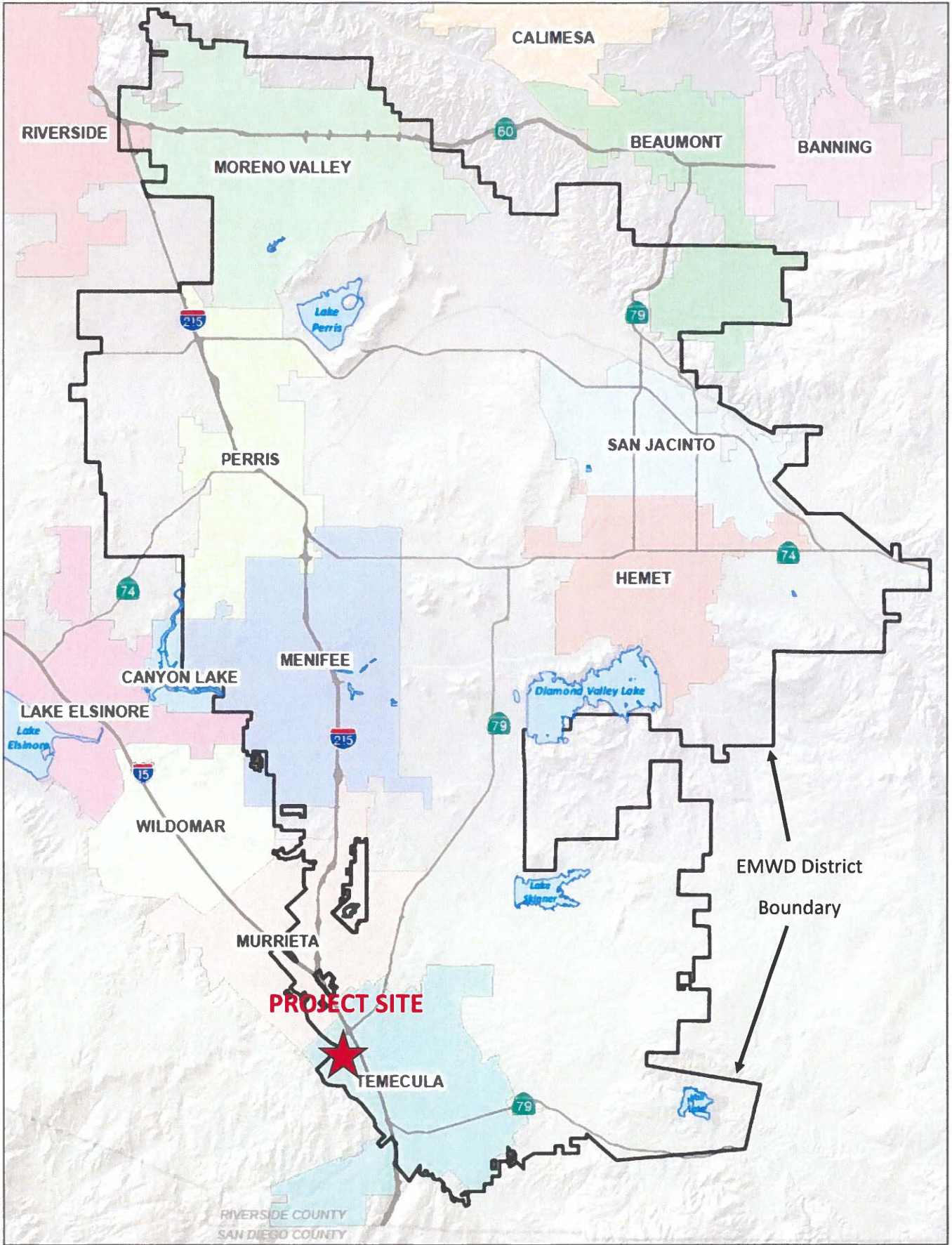
Implementation of the project would result in the repair and maintenance of an existing public facility involving no expansion of TVRWRF’s design capacity. The project will alter electrical conveyances to meet the demand of installed equipment and controls. The alterations to the slide gates will not increase facility capacity, as they are only to be used in emergencies and adjustments.

**EMWD Contact:** Joe Broadhead

**Phone:** (951) 928-3777, ext 4545

  
\_\_\_\_\_  
Joe Broadhead  
Principal Water Resources Specialist

2-6-25  
\_\_\_\_\_  
Date



**Temecula Valley Regional Water Reclamation Facility Gravity Filters and Headworks Electrical Rehabilitation**



TVRWRF Gravity Filters and Headworks Electrical Rehabilitation

**EXHIBIT 2: SITE LOCATION MAP**