

ISE, Incorporated
Structural Engineers

Telecommunications & Industrial Design

PO Box 50039 • Phoenix, Arizona • 85076 • Office: (602) 403-8614 • Fax: (623) 321-1283 • www.ISE-INC.biz

May 24, 2024

Cozy Becker
Larson Camouflage
1501 S. Euclid Ave.
Tucson, AZ 85713

Subject: Larson Project # 618978
AT&T CVL01386 Marione Drive
5204 Marione Drive
Carmichael, CA 95608

Ms. Becker,

Pursuant to your request, ISE will provide design engineering and drawings for a 74' steel monopine structure for the subject site. The pole and foundation will be designed to a maximum 98% capacity per the following Criteria:

CBC 2022, ASCE 7-16
TIA 222-H
Design Wind Speed 94 MPH (3-Sec Gust)
Risk Category: 2
Exposure: C
Topographic Category: 1
Site Specific Seismic Design Parameters (TBD)

- (1) Carrier – Rad Center Elevation @ 70' (See attached antenna & equipment listing)
- (2) Faux Broad Leaf Branches from ~20' to 79'

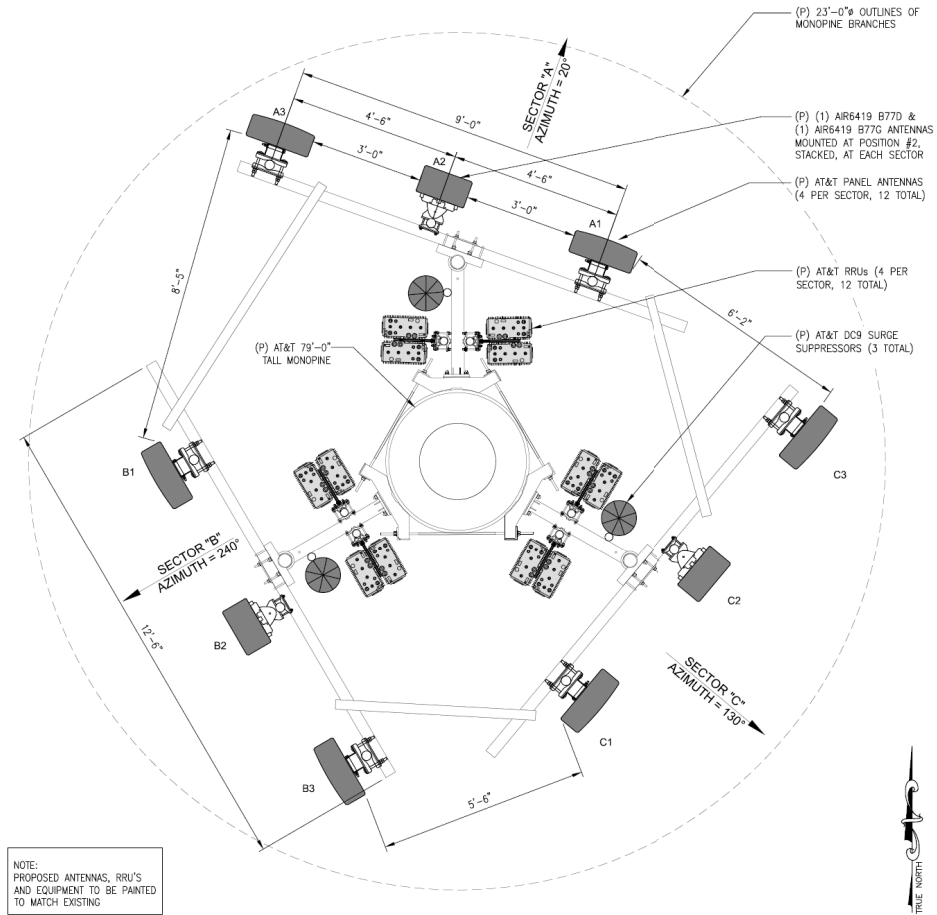
Should there be any questions regarding this issue feel free to contact me any time.

Regards,

Glen Hunt III, MS, PE
Principal Engineer
ISE Inc.
PH: 602-403-8614



Pole Design Loading per AT&T



NOTE:
PROPOSED ANTENNAS, RRU'S
AND EQUIPMENT TO BE PAINTED
TO MATCH EXISTING

(N) RF SCHEDULE

SECTOR	ANTENNA MODEL NO.	AZIMUTH	CENTERLINE	RRU	
ALPHA	A1	QUINTEL QD8612-2	20°	70°-0"	(1) 4490 B5/B12 (1) 4890 B25/B66
	A2	ERICSSON AIR6419 B77G ERICSSON AIR6419 B77D (STACKED)	20°	70°-0"	(1) INTEGRATED WITHIN AIR6419 B77D (1) INTEGRATED WITHIN AIR6419 B77G
	A3	QUINTEL QD8612-2	20°	70°-0"	(1) 4478 B14 (1) 4415 B25
BETA	B1	QUINTEL QD8612-2	240°	70°-0"	(1) 4490 B5/B12 (1) 4890 B25/B66
	B2	ERICSSON AIR6419 B77G ERICSSON AIR6419 B77D (STACKED)	240°	70°-0"	(1) INTEGRATED WITHIN AIR6419 B77D (1) INTEGRATED WITHIN AIR6419 B77G
	B3	QUINTEL QD8612-2	240°	70°-0"	(1) 4478 B14 (1) 4415 B25
GAMMA	C1	QUINTEL QD8612-2	130°	70°-0"	(1) 4490 B5/B12 (1) 4890 B25/B66
	C2	ERICSSON AIR6419 B77G ERICSSON AIR6419 B77D (STACKED)	130°	70°-0"	(1) INTEGRATED WITHIN AIR6419 B77D (1) INTEGRATED WITHIN AIR6419 B77G
	C3	QUINTEL QD8612-2	130°	70°-0"	(1) 4478 B14 (1) 4415 B25