

## NOTICE OF EXEMPTION – ATTACHMENT A

---

### **Project Location – Specific:**

Three locations for deep monitoring wells (**Figures 1-4**) at Llano Road (38.358063, -122.768971), Petaluma Hill Road (38.375198, -122.674408), and Sunny View Way (38.460990, -122.797487). All project locations are in Sonoma County, CA

### **Description of Nature, Purpose and Beneficiaries of Project:**

In 2014, the State of California adopted the Sustainable Groundwater Management Act (SGMA) to help manage its groundwater. SGMA established the framework for managing groundwater resources in medium and high priority groundwater basins. Local Groundwater Sustainability Agencies (GSA) were tasked to manage their groundwater resources in accordance with a Groundwater Sustainability Plan (GSP). The Santa Rosa Plain groundwater subbasin is a medium-priority basin established under SGMA and is managed under a DWR-approved GSP. A critical component of groundwater management is having a robust monitoring network to establish a baseline for groundwater levels. Once the current baseline is established, groundwater levels can be compared to historical data to determine long term trends and track the effectiveness of sustainable management criteria in the GSPs and implemented by the GSAs.

The Santa Rosa Plain GSA received an approximately \$5 million grant from the California Department of Water Resource through its Sustainable Groundwater Management Grant Program. One of the grant components is the planning, design, and installation of three multi-level groundwater monitoring wells. The specific focus of these wells is to address data gaps in the GSP's monitoring network and provide data, as identified in the GSP, for supporting groundwater level monitoring.

The Proposed Project would improve the Santa Rosa Plain's GSA's monitoring networks through the installation of up to three deep multi-level monitoring wells to track groundwater levels. The three deep multi-level monitoring wells will range from approximately 300 to 350 feet below ground surface (bgs) and each well casing will have a diameter of 3.0 inches. The three deep monitoring wells will be installed within boreholes with a maximum diameter of 14 inches. Well construction details and diagrams are also located on **Figures 5-7**.

The proposed activity includes: 1) well construction permitting; 2) borehole drilling, borehole geophysical logging, and monitoring well construction using portable drilling equipment appropriate for the well location and specifications; 3) elevation survey of surface completion at each well site; 4) well development and sampling; and 5) site clean-up and restoration as necessary. The GSA has implemented best management practices for siting and will continue to implement best management practices for construction and monitoring to minimize or avoid local disruption to communities and resources during these operations. The duration for the entire Proposed Project is anticipated to be 8 to 10 months, with field activities occurring over a 3-to-5-month period.

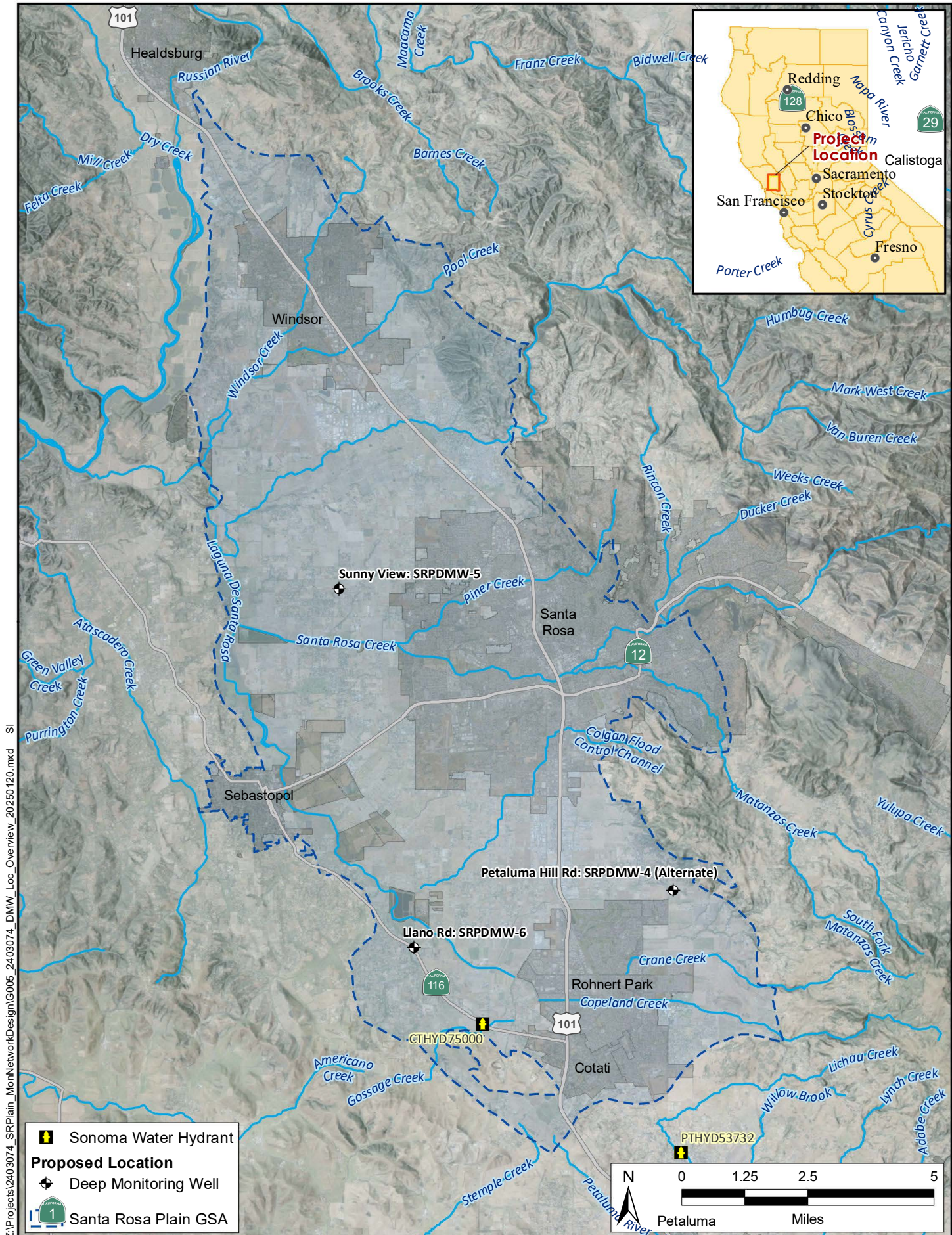
The monitoring wells will provide groundwater information to support and implement long-term sustainable groundwater planning and management and inform projects to help the GSP meet the sustainable groundwater management goals of the Basin.

**Exempt Status:**





**Categorical Exemption**

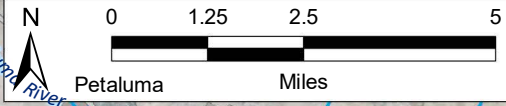
CEQA Guidelines 15306: Information Collection; 15304: Minor Alternations to Land; and 15307: Actions by Regulatory Agencies for Protection of Natural Resources





Z:\Projects\2403074\_SRPPlain\_MonNetworkDesign\G005\_2403074\_DMW\_Loc\_Overview\_20250120.mxd SI  
 20-Jan-2025

-  Sonoma Water Hydrant
-  **Proposed Location**
-  Deep Monitoring Well
-  Santa Rosa Plain GSA







Z:\Projects\2403074\_SRPPlain\_MonNetworkDesign\G007\_2403074\_DMW\_Well\_Loc.mxd SI

SOURCE: Sonoma County Assessor 2023; Pictometry International Corp.

Santa Rosa Plain GSP Implementation Services  
Monitoring Well Design and Construction

Santa Rosa Plain GSA



JANUARY 2025

Well Location  
Llano Rd: SRPDMW-6

FIGURE 2

20-Jan-2025





Z:\Projects\2403074\_SRPlain\_MonNetworkDesign\G007\_2403074\_DMW\_Well\_LocMB\_20250120.mxd SI 20-Jan-2025





Z:\Projects\2403074\_SRPlain\_MonNetworkDesign\G007\_2403074\_DMW\_Well\_Loc\MB\_20250120.mxd SI  
20-Jan-2025

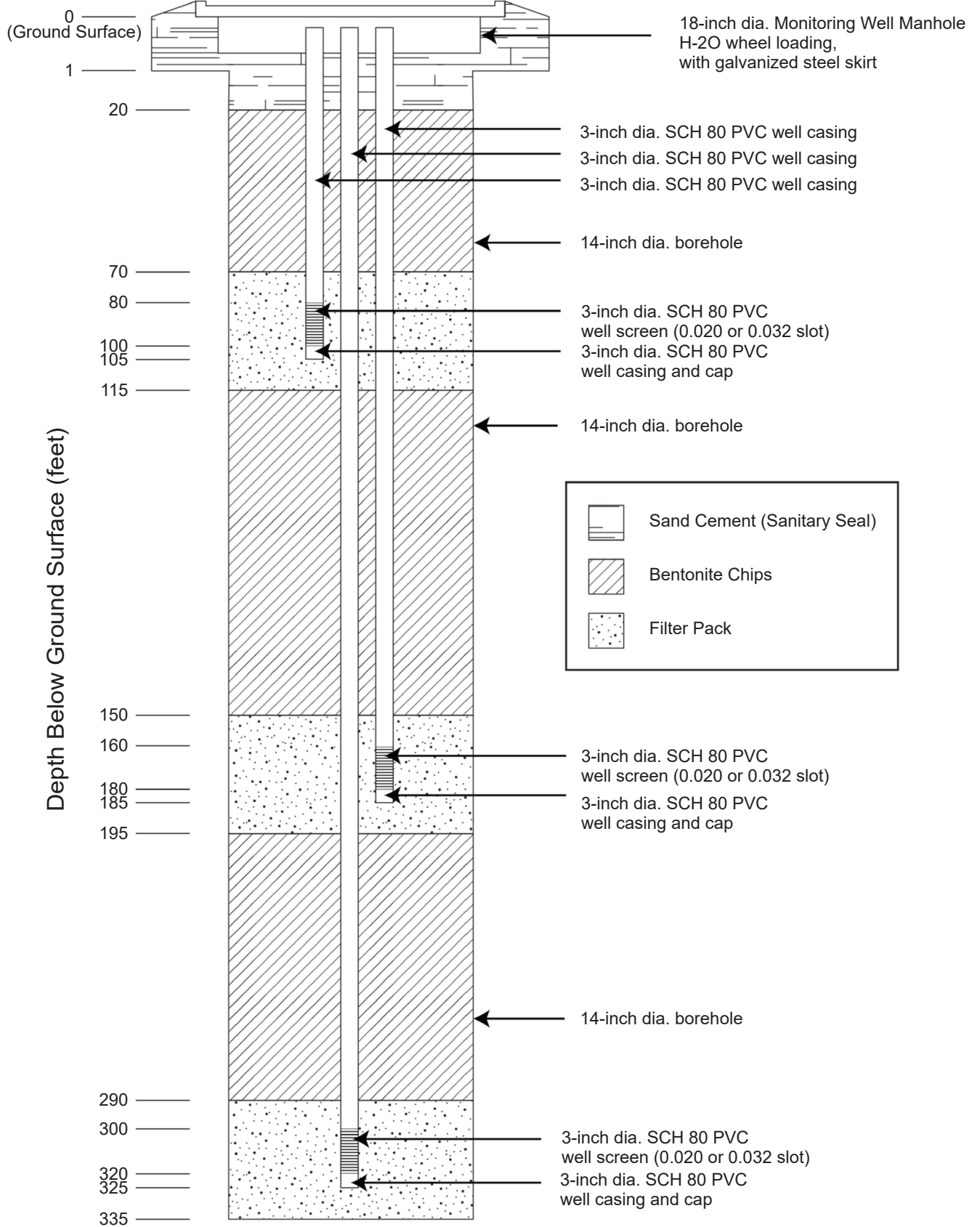
SOURCE: Sonoma County Assessor 2023; Pictometry International Corp.

Santa Rosa Plain GSP Implementation Services  
Monitoring Well Design and Construction  
Santa Rosa Plain GSA



Well Location  
Sunny View Rd: SRPDMW-5  
JANUARY 2025  
FIGURE 4





NOTE: NOT TO SCALE

Typical Monitoring Well Design

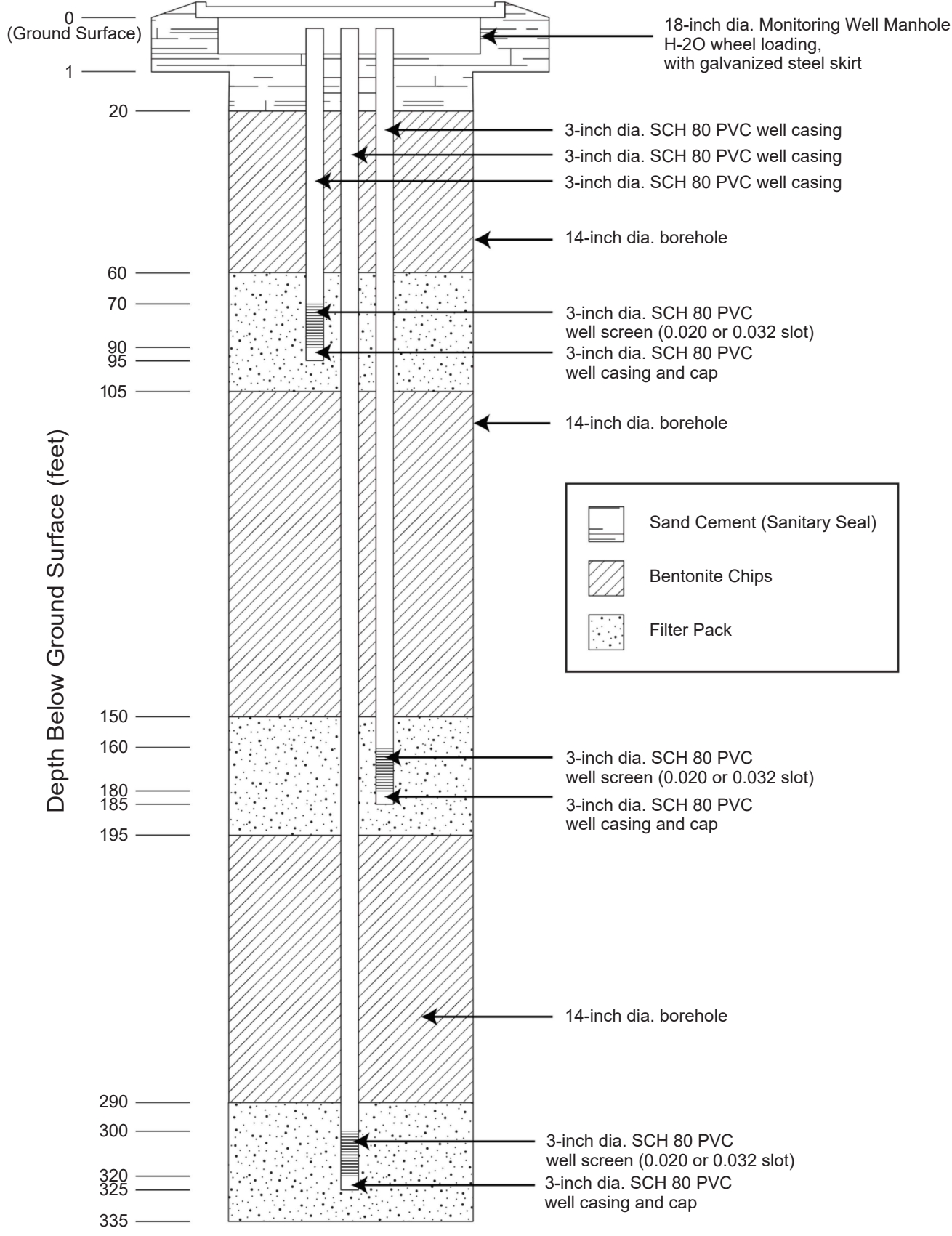
Santa Rosa Plain GSA



Nested Monitoring Well Details  
SRPDMW-4 Petaluma Hill Rd (Alternate)

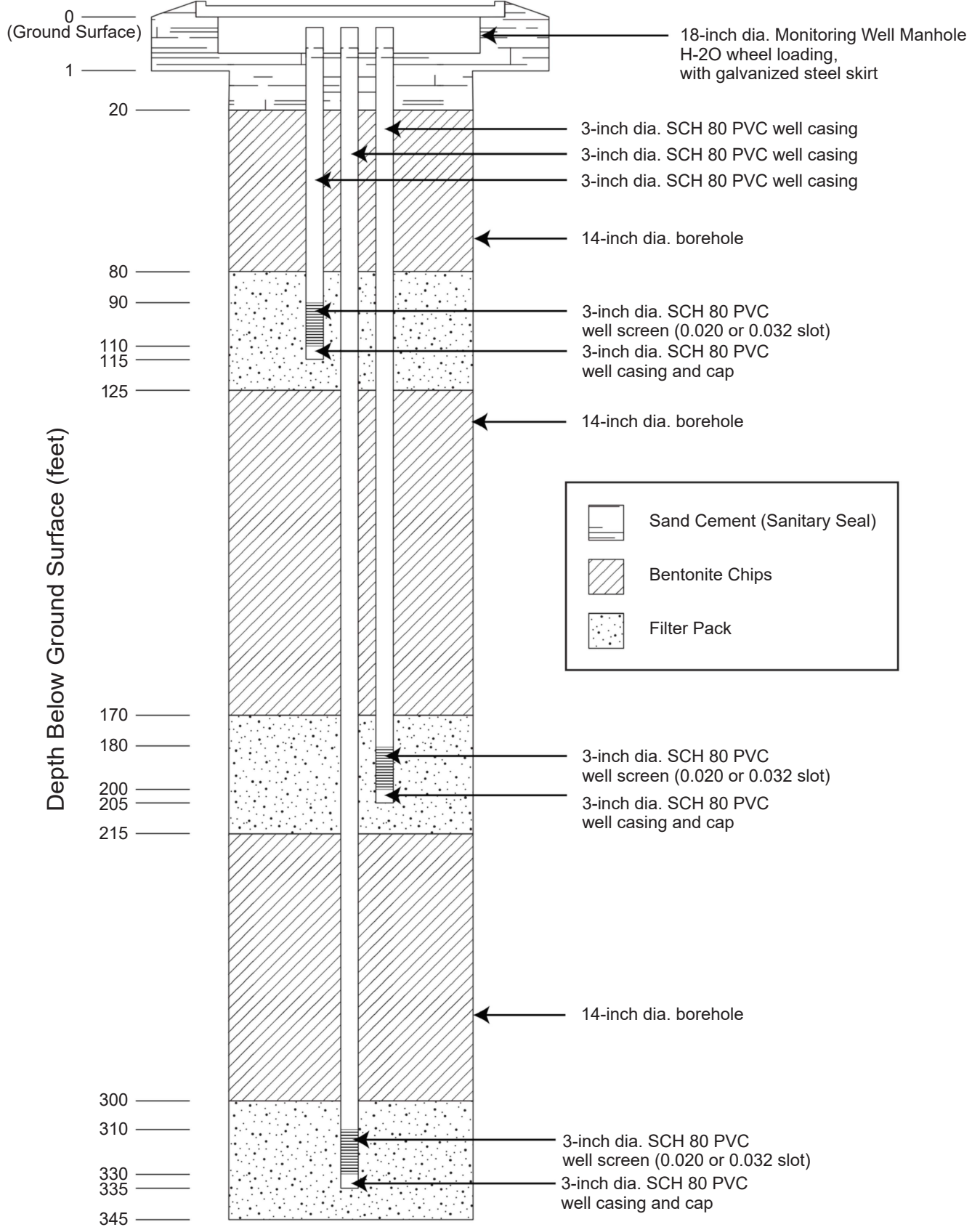
October 2024

Figure 5



NOTE: NOT TO SCALE





NOTE: NOT TO SCALE

Typical Monitoring Well Design

Santa Rosa Plain GSA



Nested Monitoring Well Details  
SRPDMW-6 Llano Rd

October 2024

Figure 7